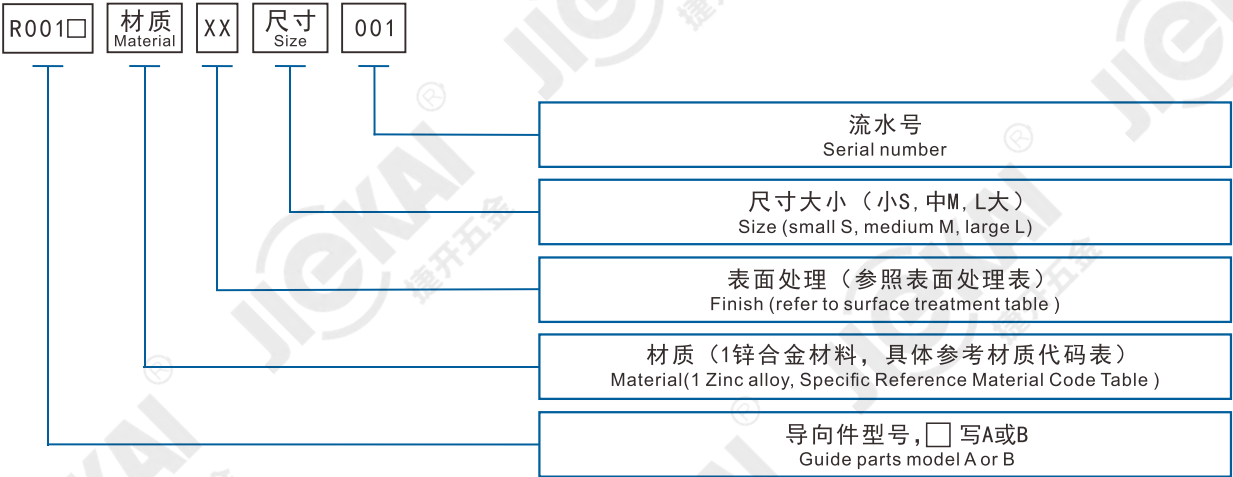
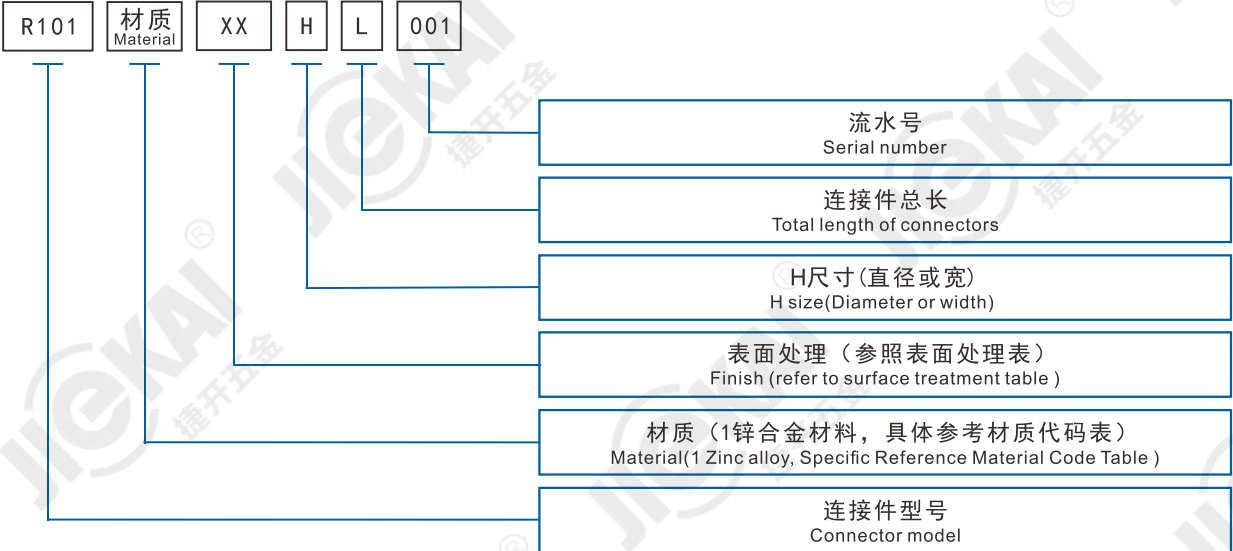


► 导向件型号说明  
Guide parts model description



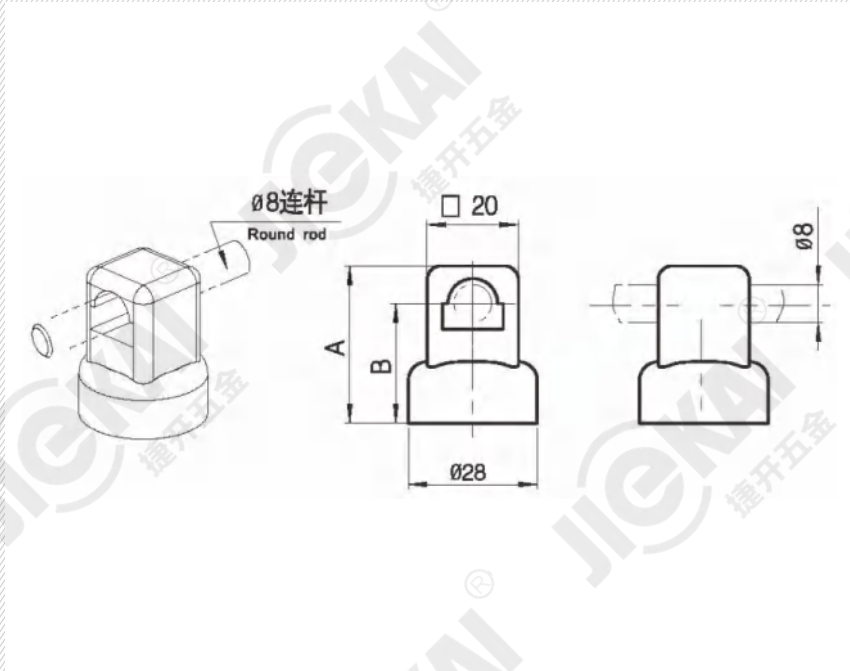
► 连接件型号说明  
Connecting accessories model description



R001



黑色PA/Black PA

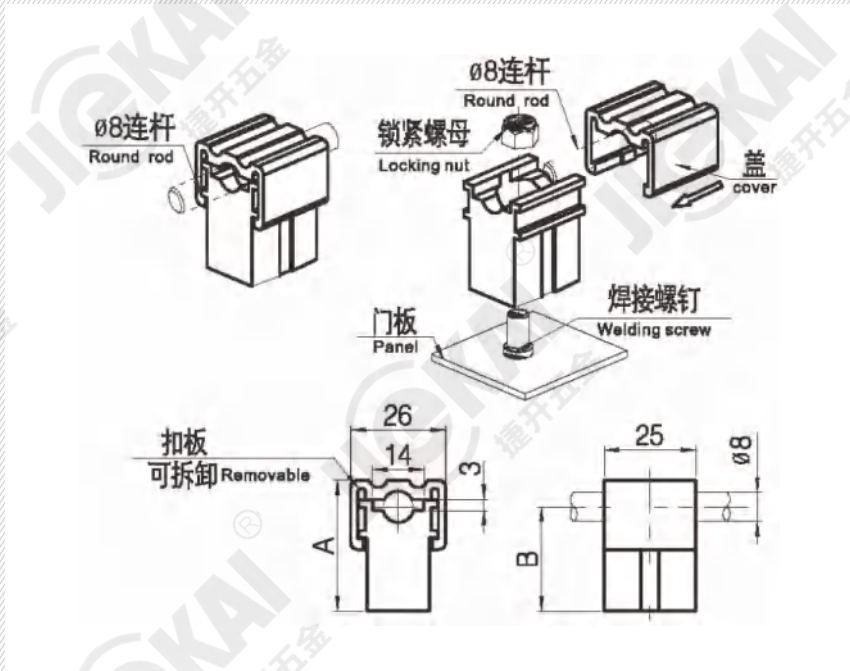


产品代号 Product code	A	B	焊接螺钉规格 Screw specification
R001-7XXS	32	24	M6X16
R001-7XXM	38	30	M6X20
R001-7XXL	40	32	M6X20

R002



黑色PA/Black PA



产品代号 Product code	A	B	焊接螺钉规格 Screw specification
R002-7XXS	31	24	M6X12-20
R002-7XXM	37	30	M6X12-20



电源锁  
Key switch lock

转舌锁  
Cam lock

圆柱锁  
Quarter turn lock

连杆锁  
Rob control lock

平面锁  
Plane lock

把手锁  
Handle lock

面板锁  
Panel lock

拉手  
Handles

限位  
Door stop

外装铰链  
External hinge

内装铰链  
Internal hinge

搭扣  
Toggle lock

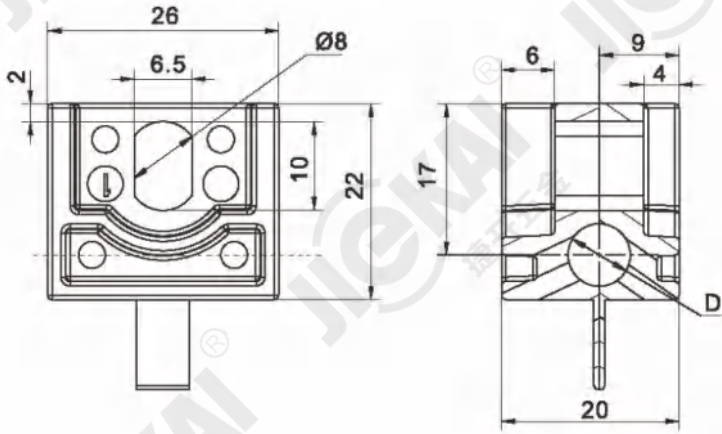
密封条  
Gasket

配件  
Accessories

R003



黑色PA/Black PA



D=Φ7

R003-7XX7

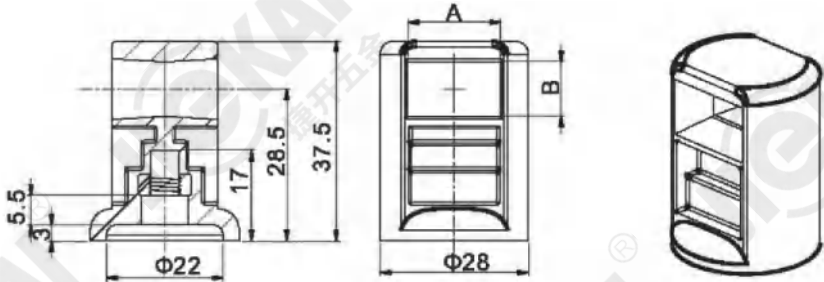
D=Φ8

R003-7XX8

R004



黑色PA/Black PA



产品代号  
Product code

A

B

R004-7XXM

17

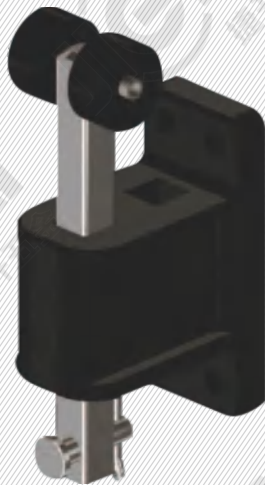
10

R004-7XXS

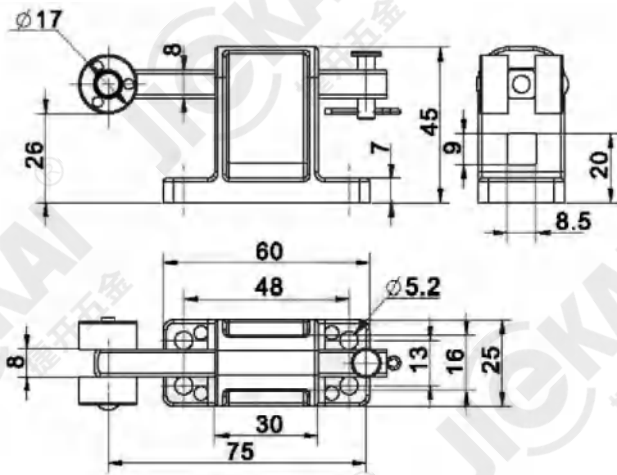
13

7

R005



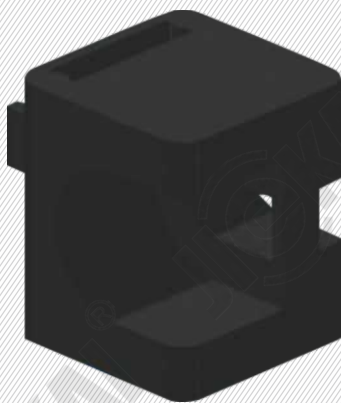
黑色PA支架, 滚轮; 不锈钢连接杆  
Black PA stents, roller; Stainless steel rod



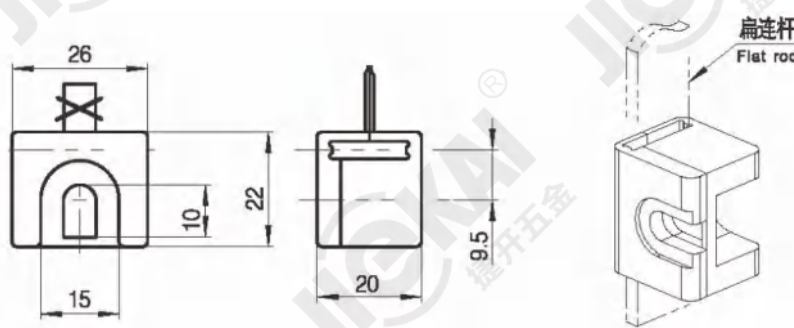
产品代号 Product code

R005-7XXS

R006



黑色PA/Black PA



产品代号 Product code

R006-7XXS



电源锁  
Key switch lock

转舌锁  
Cam lock

圆柱锁  
Quarter turn lock

连杆锁  
Rob control lock

平面锁  
Plane lock

把手锁  
Handle lock

面板锁  
Panel lock

拉手  
Handles

限位  
Door stop

外装铰链  
External hinge

内装铰链  
Internal hinge

搭扣  
Toggle lock

密封条  
Gasket

配件  
Accessories

电源锁  
Key switch lock

转舌锁  
Cam lock

圆柱锁  
Quarter turn lock

连杆锁  
Rob control lock

平面锁  
Plane lock

把手锁  
Handle lock

面板锁  
Panel lock

拉手  
Handles

限位  
Door stop

外装铰链  
External hinge

内装铰链  
Internal hinge

搭扣  
Toggle lock

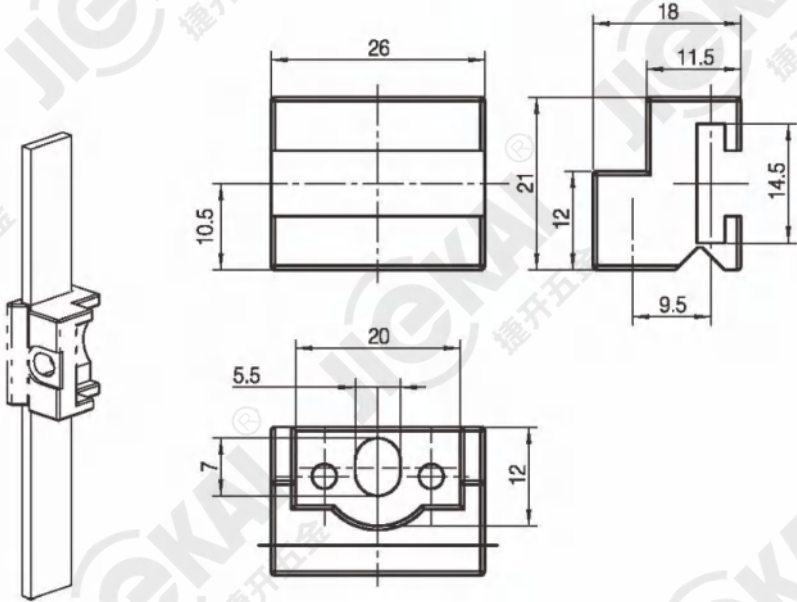
密封条  
Gasket

配件  
Accessories

R007



黑色PA/Black PA

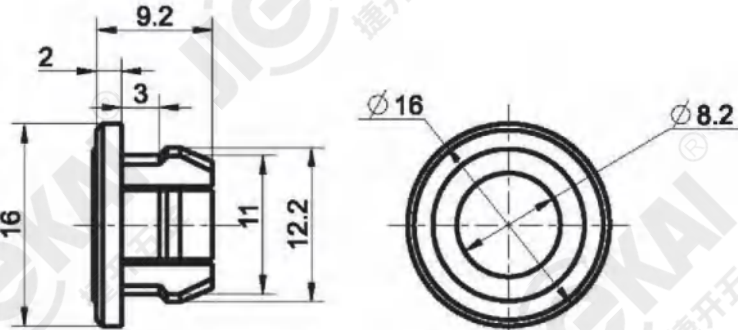


产品代号 Product code  
R007-7XXS

R009



黑色塑料/Black plastic

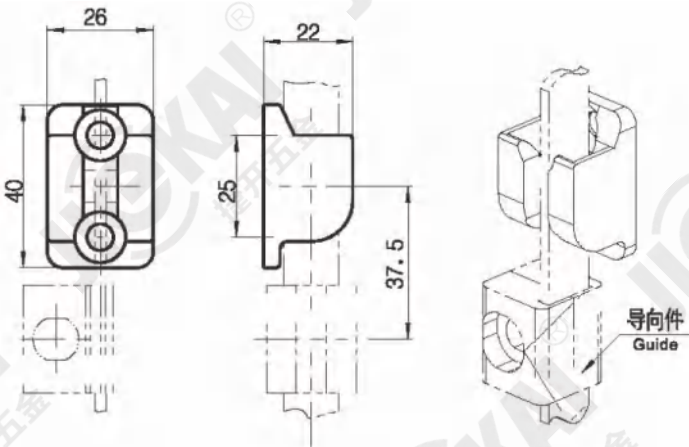


产品代号 Product code  
R009-7XXS

R008



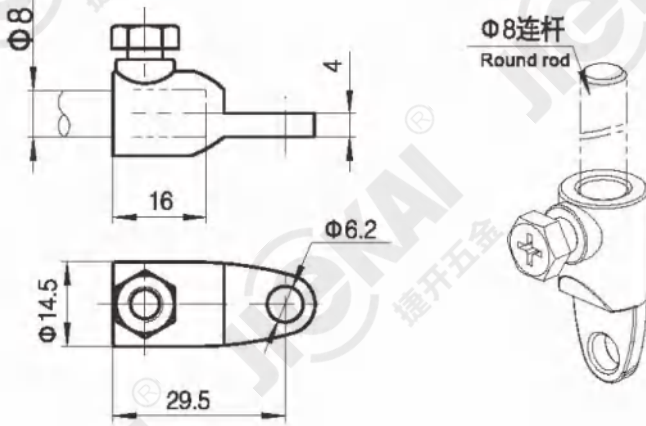
B型



A型  
R008-7XXA

B型  
R008-7XXB

R010



锌合金 zinc alloy  
R010-1E0S

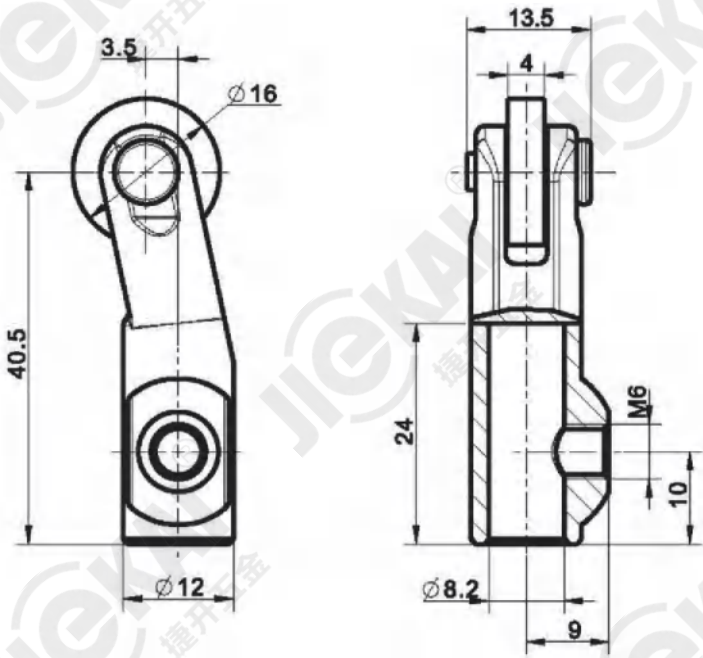
不锈钢 stainless steel  
R010-3XXS



R011



锌合金, 镀亮铬/Zinc alloy, chromed



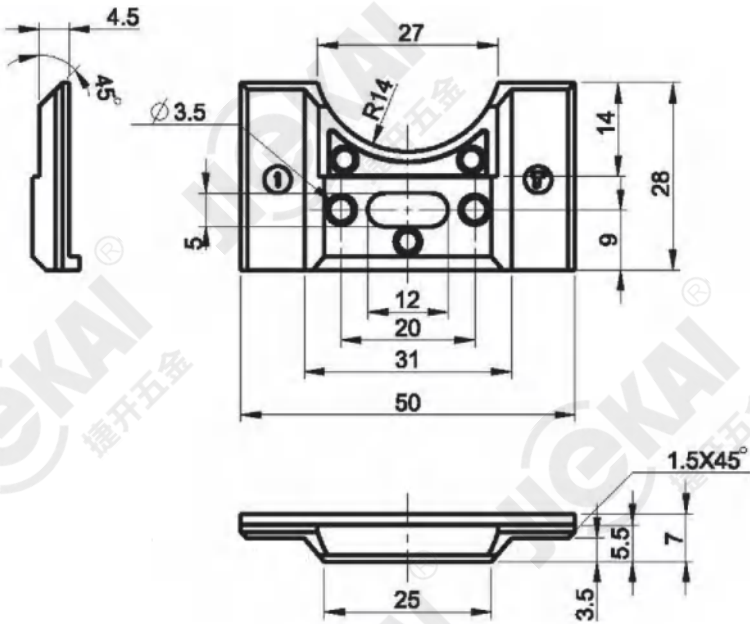
产品代号 Product code

R011-1E1S

R013



锌合金, 镀蓝白锌/Zinc alloy, galvanized



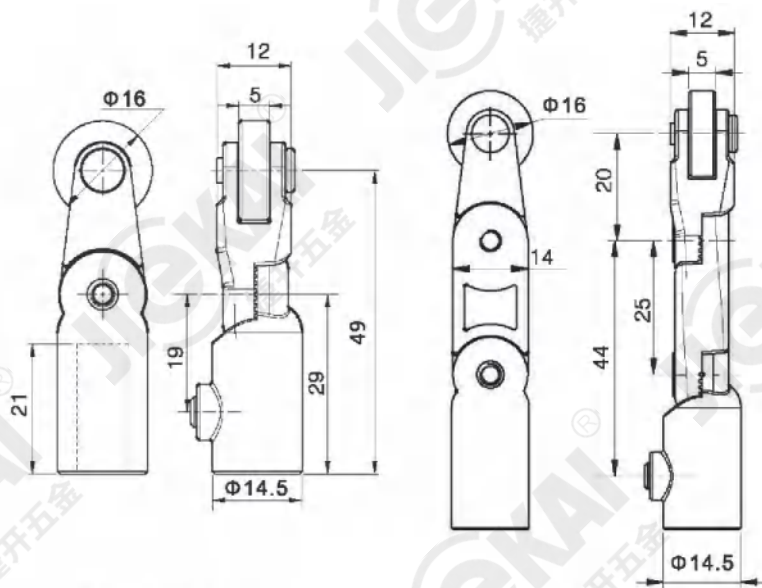
产品代号 Product code

R013-1E0S

R012



锌合金, 镀蓝白锌/Zinc alloy, galvanized



两件式two-piece

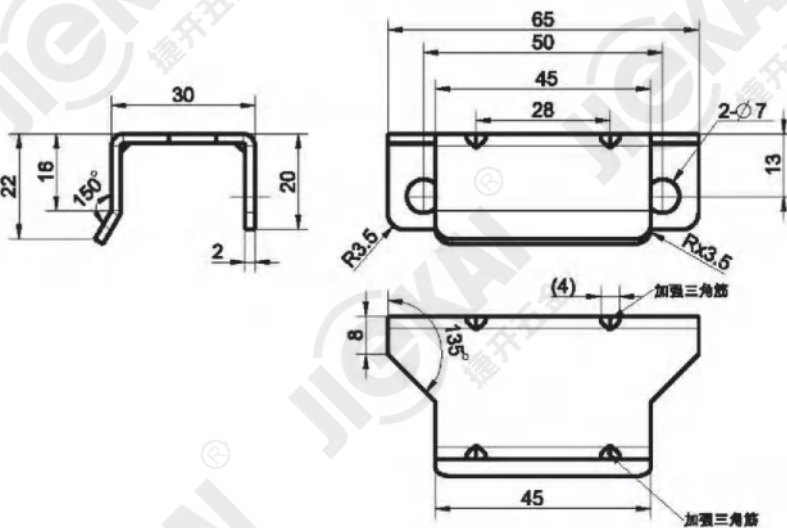
三件式three-piece

配置 Configuration	Φ8孔型 Apply to 8 mm round rod	Φ9孔型 Apply to 9 mm round rod	3x14扁杆孔型 Apply to 3x14 mm Flat rod
两件式 Two-piece	R012-1E082	R012-1E092	R012-1E032
三件式 Three-piece	R012-1E083	R012-1E093	R012-1E033

R014



不锈钢材质/Stainless steel



产品代号 Product code

R014-3XXS



电源锁  
Key switch lock

转舌锁  
Cam lock

圆柱锁  
Quarter turn lock

连杆锁  
Rob control lock

平面锁  
Plane lock

把手锁  
Handle lock

面板锁  
Panel lock

拉手  
Handles

限位  
Door stop

外装铰链  
External hinge

内装铰链  
Internal hinge

搭扣  
Toggle lock

密封条  
Gasket

配件  
Accessories

电源锁  
Key switch lock

转舌锁  
Cam lock

圆柱锁  
Quarter turn lock

连杆锁  
Rob control lock

平面锁  
Plane lock

把手锁  
Handle lock

面板锁  
Panel lock

拉手  
Handles

限位  
Door stop

外装铰链  
External hinge

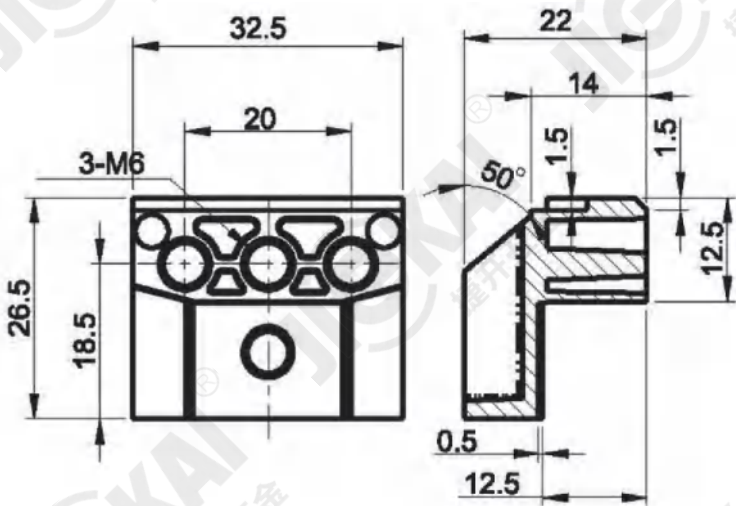
内装铰链  
Internal hinge

搭扣  
Toggle lock

密封条  
Gasket

配件  
Accessories

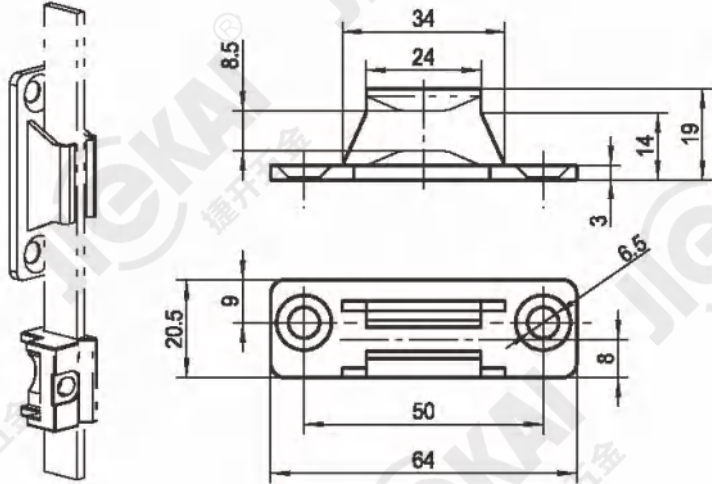
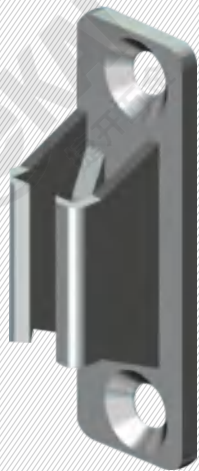
R015



锌合金, 镀蓝白锌/Zinc alloy, galvanized

产品代号 Product code  
R015-1E0S

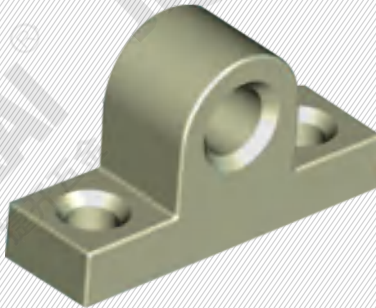
R016



本色, 锌合金/natural color, zinc alloy

产品代号 Product code  
R016-1XXS

R017

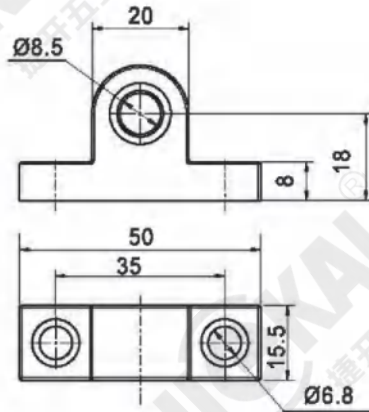
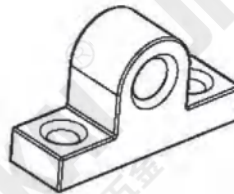


黑色PA/Black PA

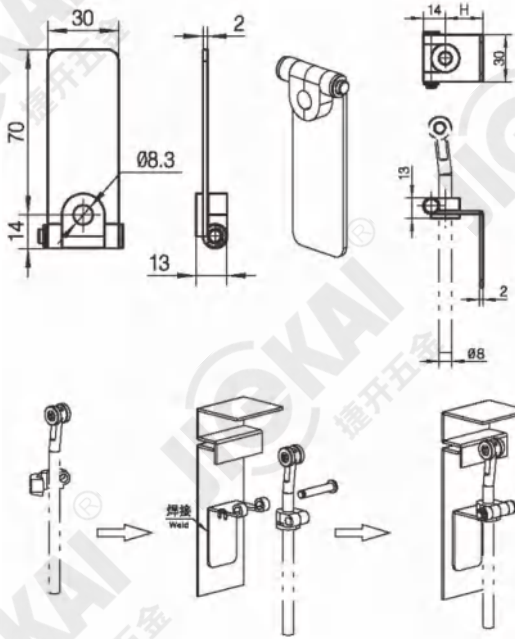
R018



镀锌板, 塑料套  
Galvanized panel, plastic set



产品代号 Product code  
R017-7XXS



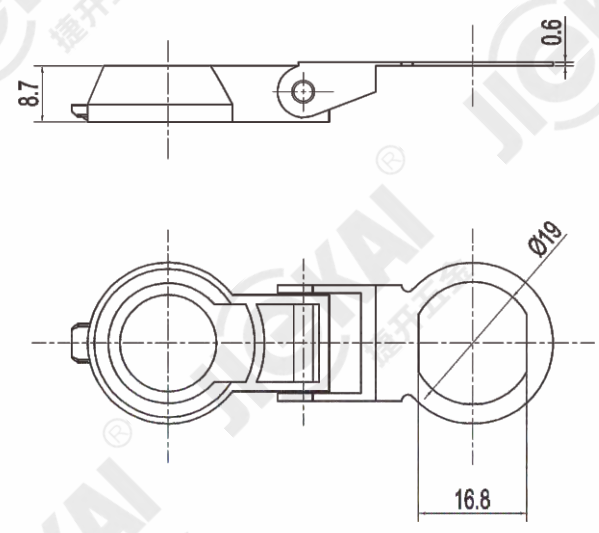
H=0, 平板式 Flat type  
R018-6E0S

H=24  
R018-6E0M

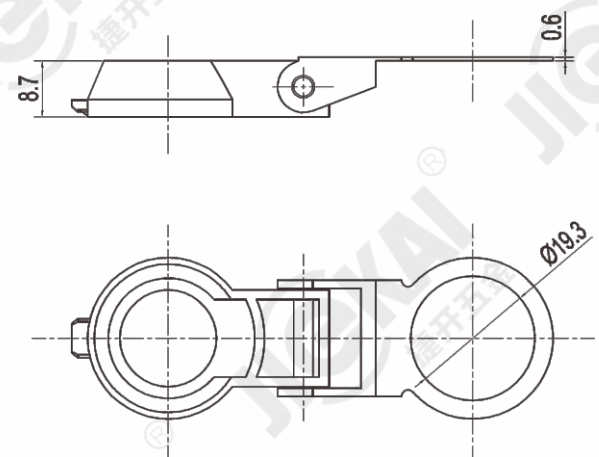
H=30  
R018-6E0L



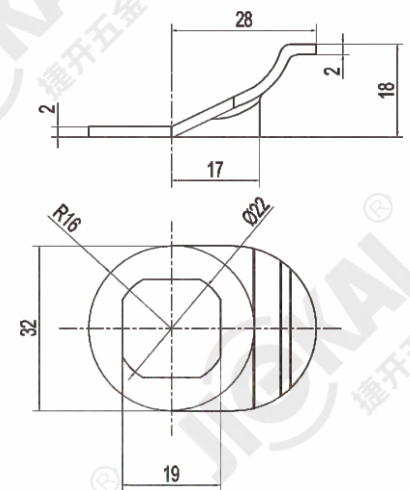
R1000防尘盖  
Dust cover



R1001防尘盖  
Dust cover



R1007拉攀  
Black damping lock bolt



R1002防尘盖  
Dust cover



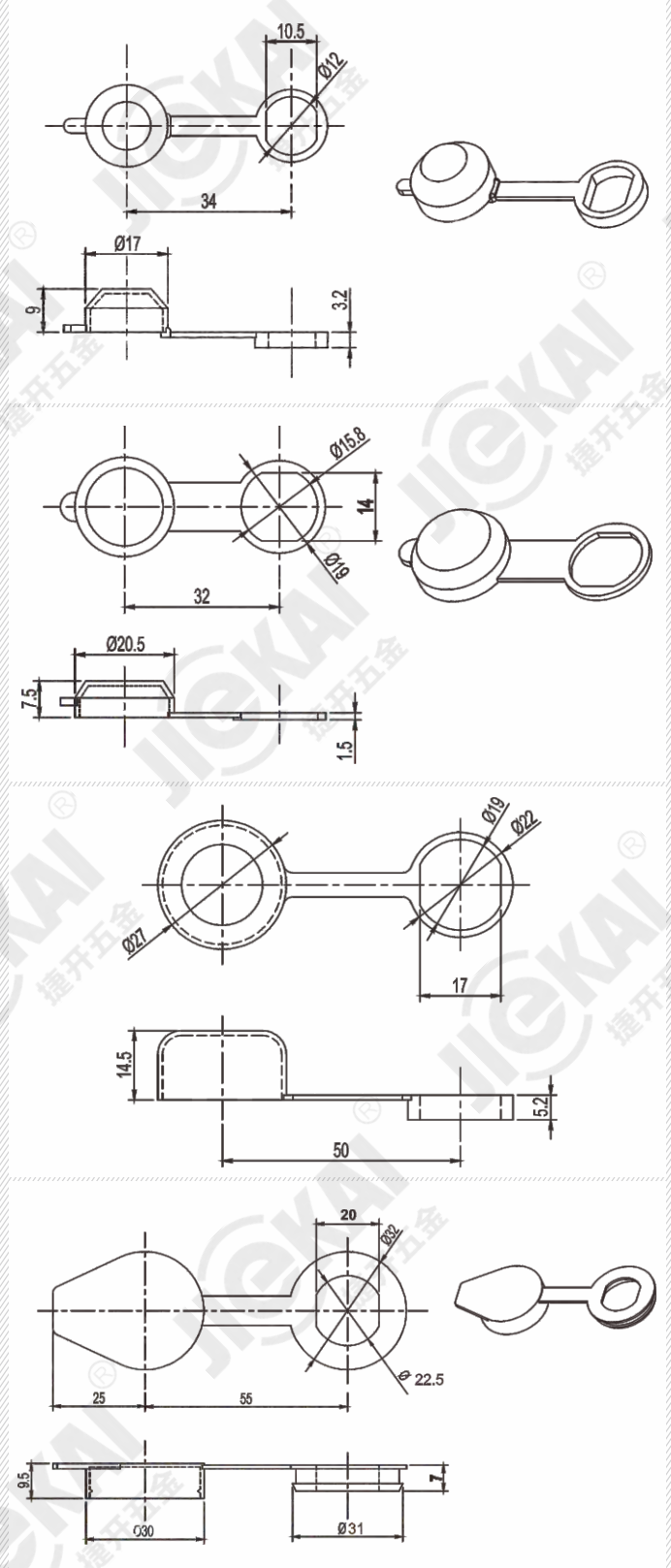
R1003防尘盖  
Dust cover



R1005防尘盖  
Dust cover



R1006防尘盖  
Dust cover





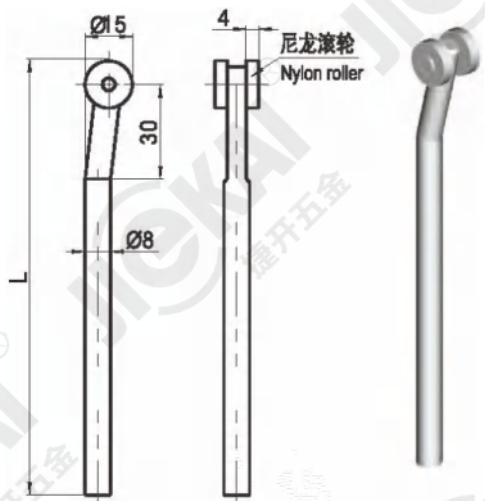
**R101**



XXX 长度L/The length L(mm)

镀锌钢 Galvanized steel	不锈钢 Stainless steel
R101-6E008-XXX	R101-3XX08-XXX

**R102**

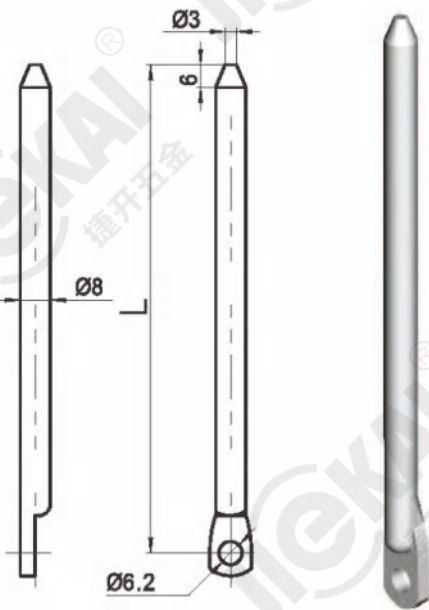


XXX 长度L/The length L(mm)

镀锌钢 Galvanized steel	不锈钢 Stainless steel
R102-6E008-XXX	R102-3XX08-XXX

PA 滚轮  
PA wheel

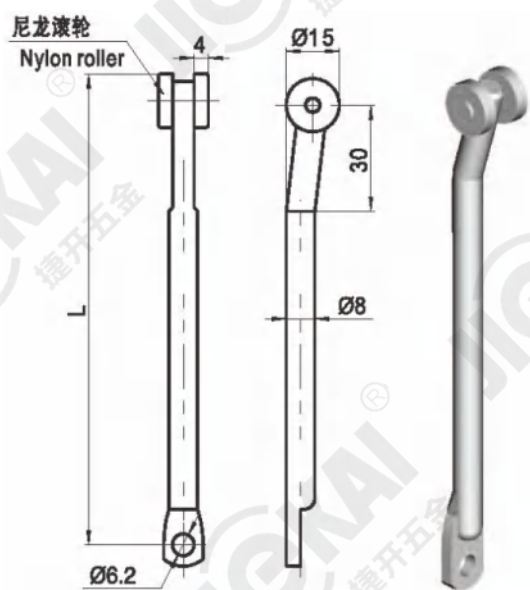
**R103**



XXX 长度L/The length L(mm)

镀锌钢 Galvanized steel	不锈钢 Stainless steel
R103-6E008-XXX	R103-3XX08-XXX

**R104**

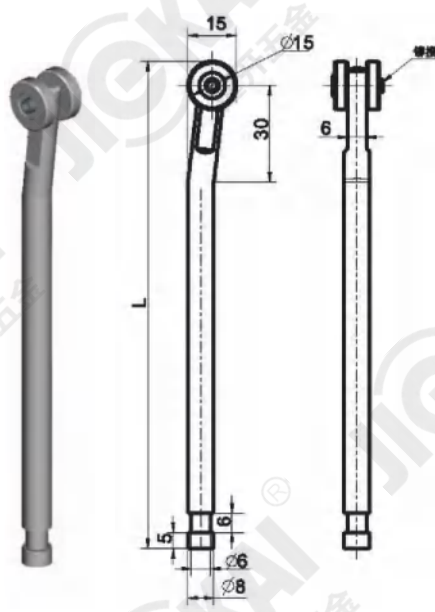


XXX 长度L/The length L(mm)

镀锌钢 Galvanized steel	不锈钢 Stainless steel
R104-6E008-XXX	R104-3XX08-XXX

PA 滚轮  
PA wheel

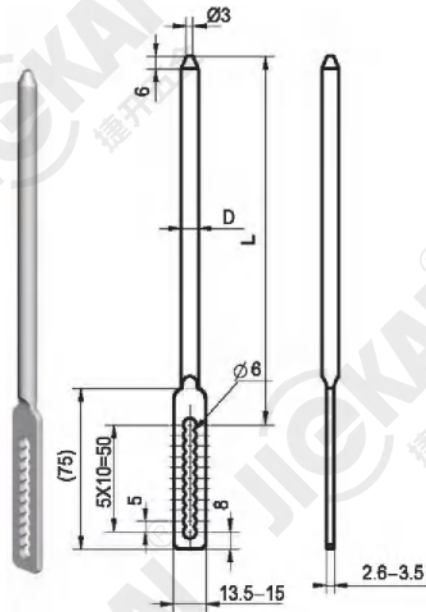
**R105**



XXX 长度L/The length L(mm)

镀锌钢 Galvanized steel	不锈钢 Stainless steel
R105-6E008-XXX	R105-3XX08-XXX

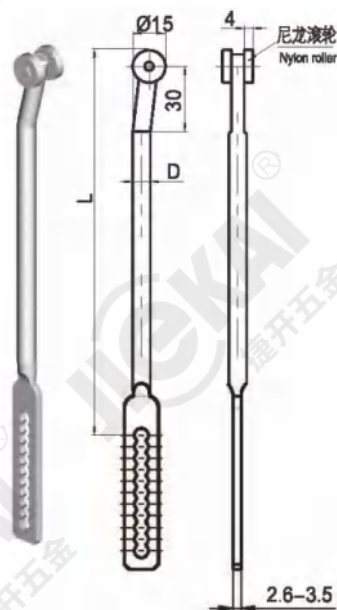
**R106**



XXX 长度L/The length L(mm)

镀锌钢 Galvanized steel	不锈钢 Stainless steel
R106-6E008-XXX	R106-3XX08-XXX

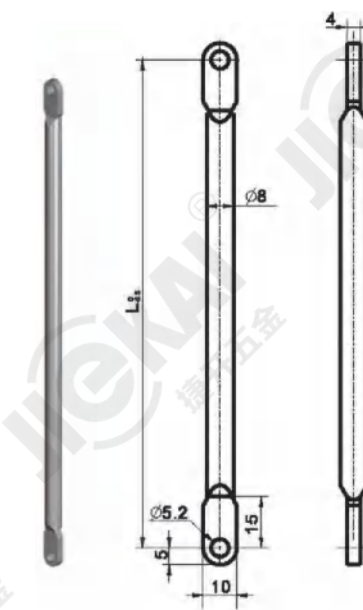
**R107**



XXX 长度L/The length L(mm)

镀锌钢 Galvanized steel	不锈钢 Stainless steel
R107-6E008-XXX	R107-3XX08-XXX

**R108**

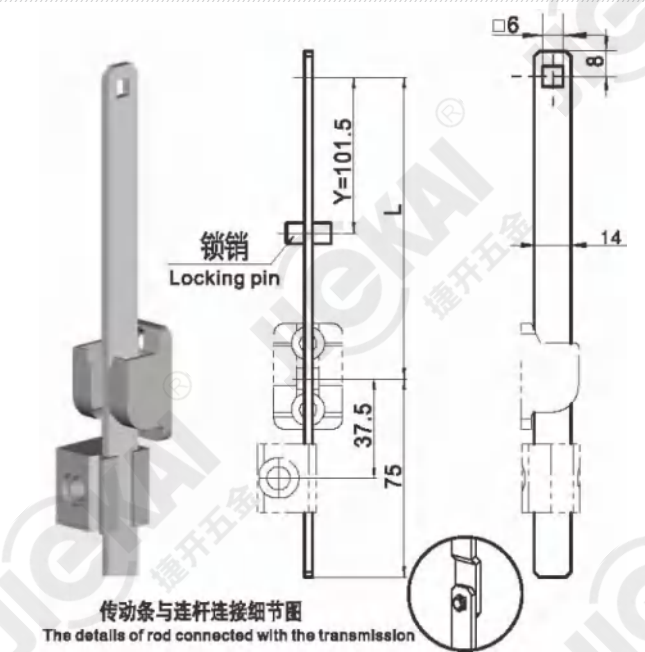


XXX 长度L/The length L(mm)

镀锌钢 Galvanized steel	不锈钢 Stainless steel
R108-6E008-XXX	R108-3XX08-XXX



R109

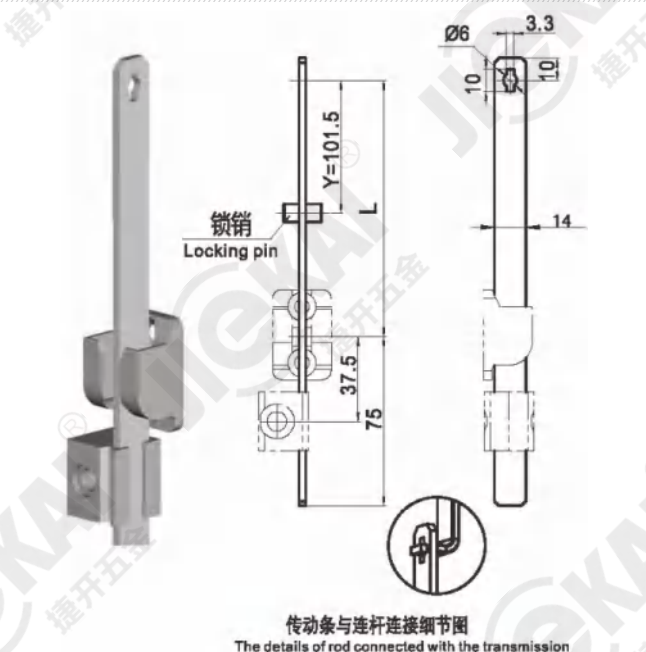


传动条与连杆连接细节图  
The details of rod connected with the transmission

XXX 长度L/The length L(mm)

镀锌钢 Galvanized steel	不锈钢 Stainless steel
R109-6E014-XXX	R109-3XX14-XXX

R110

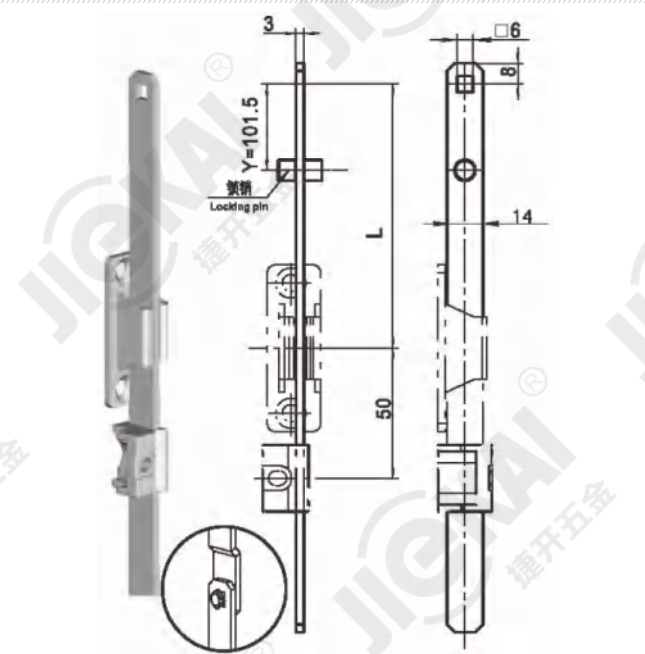


传动条与连杆连接细节图  
The details of rod connected with the transmission

XXX 长度L/The length L(mm)

镀锌钢 Galvanized steel	不锈钢 Stainless steel
R110-6E014-XXX	R110-3XX14-XXX

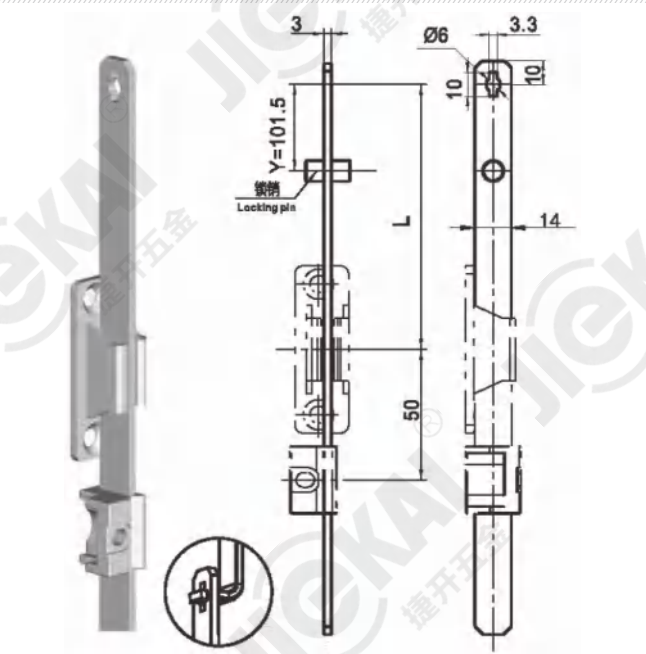
R111



XXX 长度L/The length L(mm)

镀锌钢 Galvanized steel	不锈钢 Stainless steel
R111-6E014-XXX	R111-3XX14-XXX

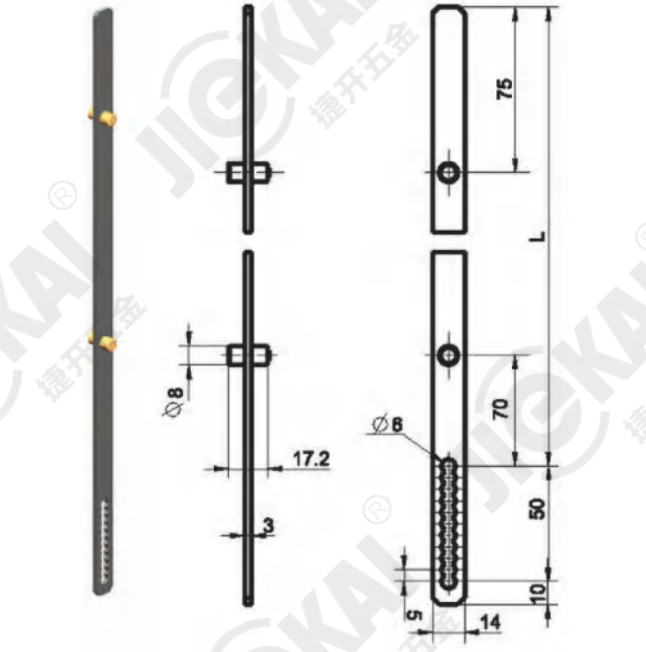
R112



XXX 长度L/The length L(mm)

镀锌钢 Galvanized steel	不锈钢 Stainless steel
R112-6E014-XXX	R112-3XX14-XXX

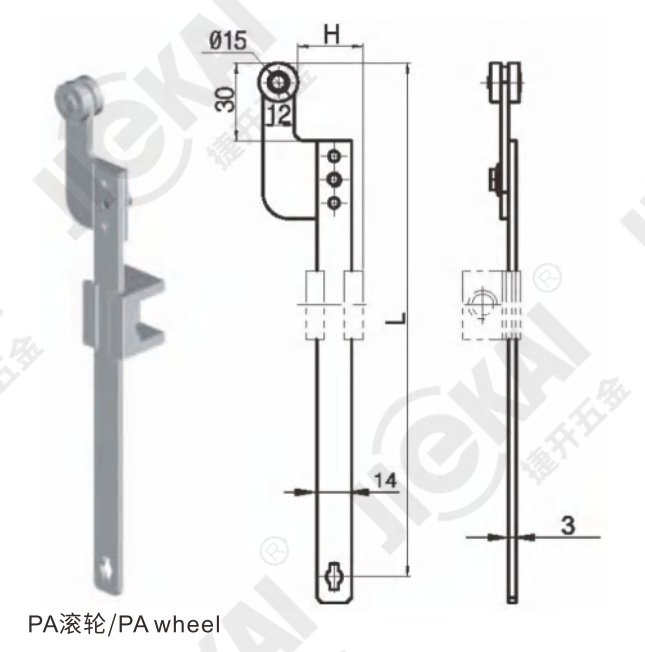
R113



XXX 长度L/The length L(mm)

镀锌钢 Galvanized steel	不锈钢 Stainless steel
R113-6E014-XXX	R113-3XX14-XXX

R114

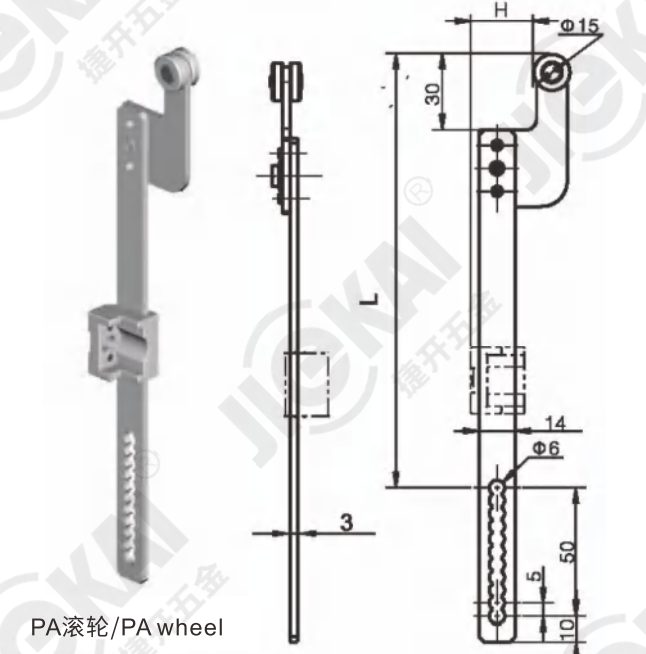


PA滚轮/PA wheel

XXX 长度L/The length L(mm)

特征说明 Features	镀锌钢 Galvanized steel	不锈钢 Stainless steel
H=20	R114-6E020-XXX	R114-3XX20-XXX
H=25	R114-6E025-XXX	R114-3XX25-XXX

R115

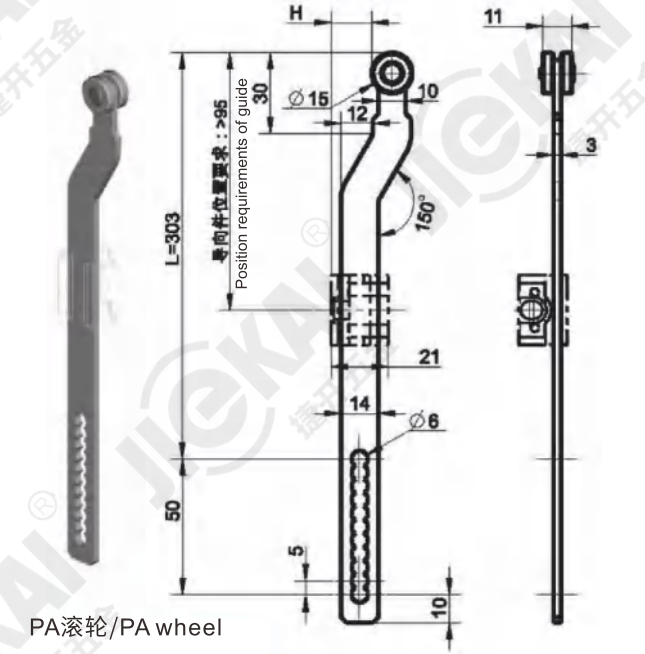


PA滚轮/PA wheel

XXX 长度L/The length L(mm)

特征说明 Features	镀锌钢 Galvanized steel	不锈钢 Stainless steel
H=20	R115-6E020-XXX	R115-3XX20-XXX
H=25	R115-6E025-XXX	R115-3XX25-XXX

R116



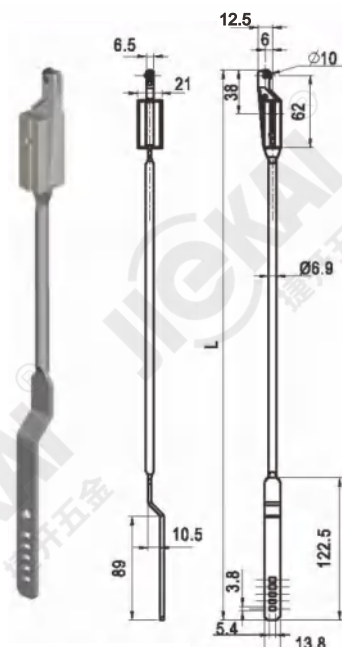
PA滚轮/PA wheel

XXX 长度L/The length L(mm) 其它H高度可以定制

特征说明 Features	镀锌钢 Galvanized steel	不锈钢 Stainless steel
H=20	R116-6E020-XXX	R116-3XX20-XXX
H=25	R116-6E025-XXX	R116-3XX25-XXX



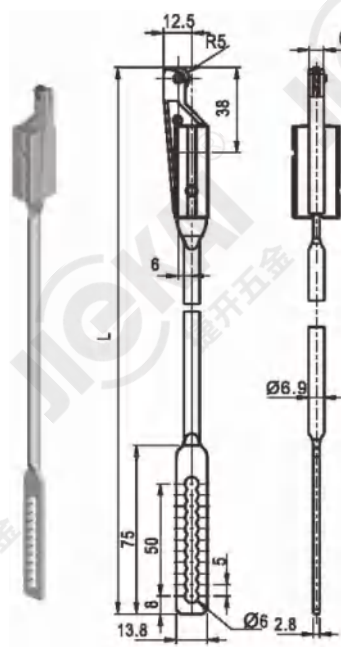
## R117



XXX 长度L/The length L(mm)

镀锌钢 Galvanized steel	不锈钢 Stainless steel
R117-6E069-XXX	R117-3XX69-XXX

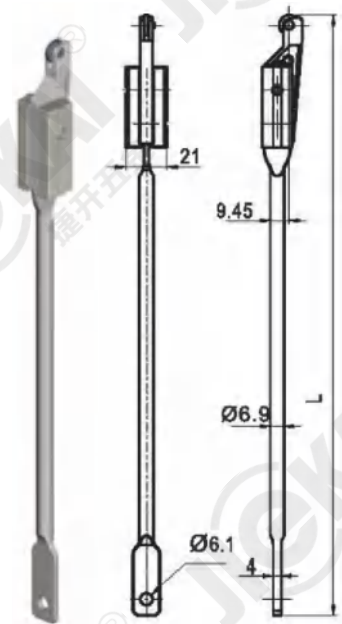
## R118



XXX 长度L/The length L(mm)

镀锌钢 Galvanized steel	不锈钢 Stainless steel
R118-6E069-XXX	R118-3XX69-XXX

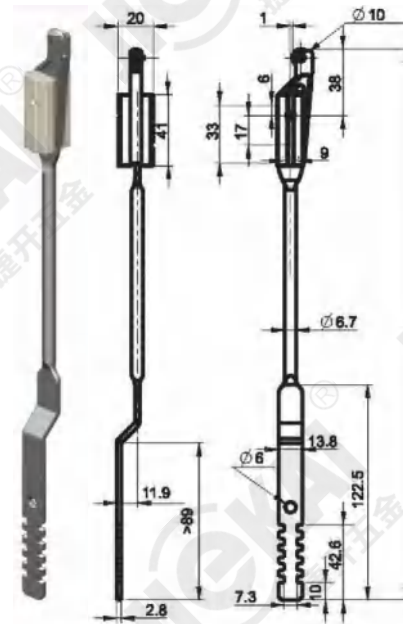
## R119



XXX 长度L/The length L(mm)

镀锌钢 Galvanized steel	不锈钢 Stainless steel
R119-6E069-XXX	R119-3XX69-XXX

## R120



XXX 长度L/The length L(mm)

镀锌钢 Galvanized steel	不锈钢 Stainless steel
R120-6E067-XXX	R120-3XX67-XXX