

## ET - SYSTEM POWER SUPPLY

### AI Master-Slave instruction

#### 德国优拓电源模拟量主从控制说明

#### 一、Necessary Condition(必要条件)

1. 具有 AI Interface 接口的 SMS (SMS/E) 或 HP (HP/E) 系列的产品。  
The SMS (SMS/E) or HP (HP/E) products with AI Interface control.
2. 同一系列同规格产品 (例: SMS360 只能和 SMS360 做主从控制)。  
Same series and specification products (Example: SMS360 can only control with SMS360).
3. 不可与具备 Autoranging 功能的电源混用。  
Do not mix with power supply with Autoranging function.
4. 电源输出需要按照相应的串并联方式连接。  
The power output shall be connected in accordance with the corresponding series and parallel mode.

#### 二、Procedure (流程)

1. 检查两台电源是否符合主从控制的条件。  
Check whether the two power supplies meet the conditions of master-slave control.
2. 拔出 AI Interface 接口上的插头。  
Unplug the AI Interface.



图.1

3. 准备焊接工具、DB25 公头插头。  
Prepare welding tools, DB25 male plug.

4. 按照 图.2 焊接连接线缆。

Connect the cables by welding as shown in FIG.2.

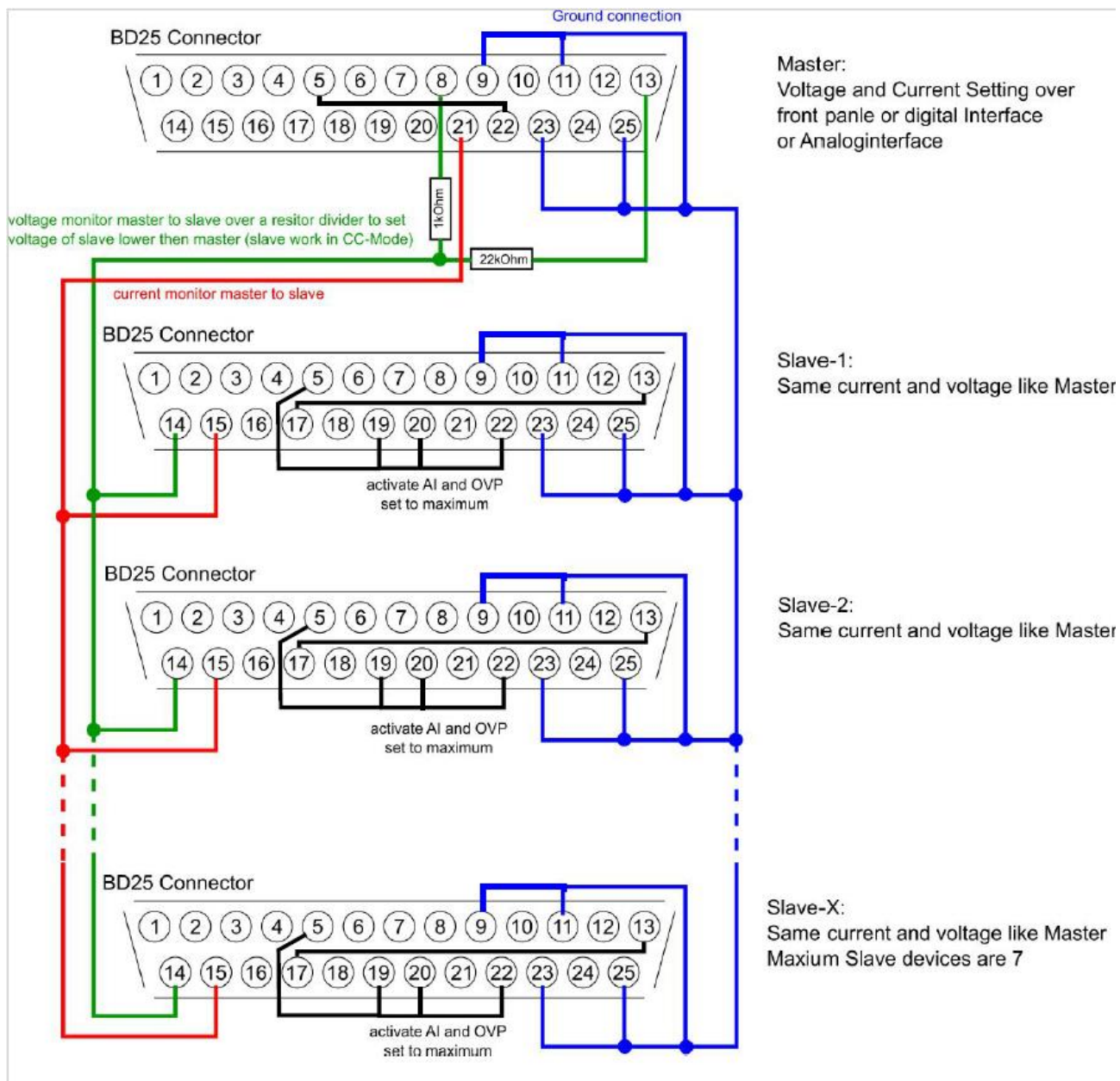


图.2

注：若主机为经济版电源，则不需要连接 5Pin 和 22Pin。

If the host is economy edition power supply, no need to connect 5Pin and 22Pin.

5. 制作完成的连接线，需在两头扣上屏蔽磁环。

The finished connection wire, the shielding magnetic ring should be fastened at both ends.



图.3

6. 将主机插头插进主机的 AI Interface 接口，从机插口依次插进从机的 AI Interface 接口。

Insert the host plug into the AI Interface of the host, and insert the AI Interface of the slave successively from the socket of the machine.

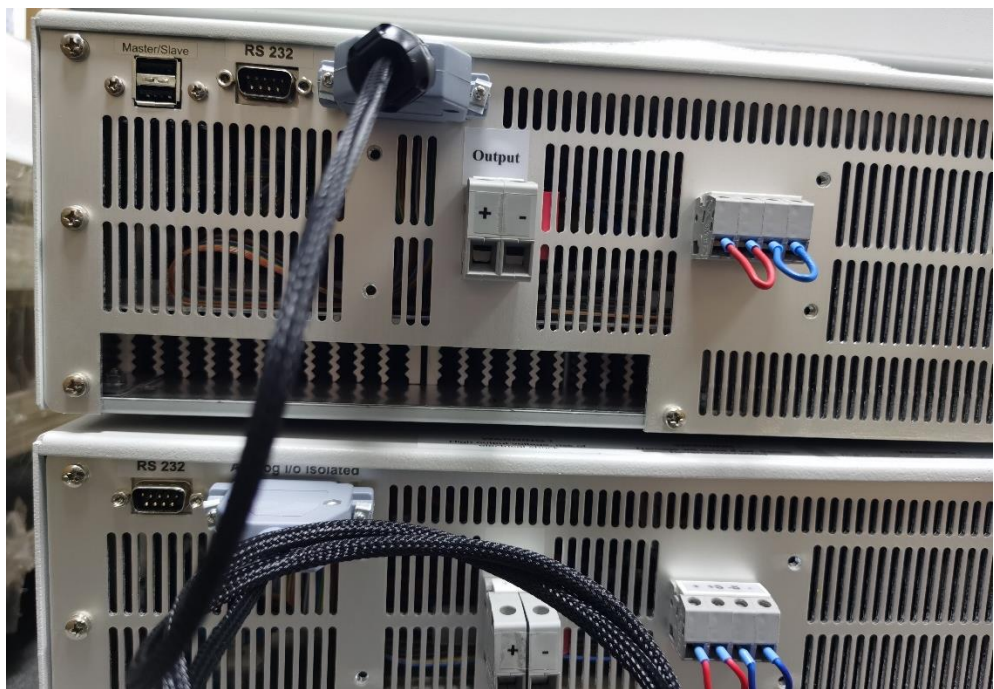


图.4