

GFD PP-R Water Supply Pipe and Fittings



PP-R Pipe Series S5
Working Pressure : 1.25Mpa
• For Cold Water

O.D. (mm)	Thickness (mm)	Price (USD/m)
Ø20	2.00	0.25
Ø25	2.30	0.37
Ø32	2.90	0.58
Ø40	3.70	0.95
Ø50	4.60	1.45
Ø63	5.80	2.32
Ø75	6.80	3.44
Ø90	8.20	4.99
Ø110	10.00	7.38
Ø125	11.40	13.09
Ø160	14.60	15.65

PP-R Pipe Series S4
Working Pressure : 1.6Mpa
• For Cold Water

O.D. (mm)	Thickness (mm)	Price (USD/m)
Ø20	2.30	0.28
Ø25	2.80	0.43
Ø32	3.60	0.69
Ø40	4.50	1.14
Ø50	5.60	1.78
Ø63	7.10	2.83
Ø75	8.40	4.14
Ø90	10.10	5.97
Ø110	12.30	8.87
Ø125	14.00	16.29
Ø160	17.90	19.05

PP-R Pipe Series S3.2
Working Pressure : 2.0Mpa
• For Cold and Hot Water

O.D. (mm)	Thickness (mm)	Price (USD/m)
Ø20	2.80	0.35
Ø25	3.50	0.54
Ø32	4.40	0.86
Ø40	5.50	1.36
Ø50	6.90	2.13
Ø63	8.60	3.45
Ø75	10.30	4.88
Ø90	12.30	7.06
Ø110	15.10	10.51
Ø125	17.10	19.26
Ø160	21.90	22.19

PP-R Pipe Series S2.5
Working Pressure : 2.5Mpa
• For Cold and Hot Water

O.D. (mm)	Thickness (mm)	Price (USD/m)
Ø20	3.40	0.43
Ø25	4.20	0.67
Ø32	5.40	1.09
Ø40	6.70	1.68
Ø50	8.30	2.61
Ø63	10.50	4.15
Ø75	12.50	5.87
Ø90	15.00	8.29
Ø110	18.30	12.61
Ø125	20.80	23.14
Ø160	26.60	26.64

Coupling



Size (mm)	Price (USD/PCS)
Ø20	0.03
Ø25	0.05
Ø32	0.09
Ø40	0.15
Ø50	0.26
Ø63	0.46
Ø75	0.70
Ø90	1.21

Size (mm)	Price (USD/PCS)
Ø110	2.11

Reducer



Size (mm)	Price (USD/PCS)
Ø25x20	0.05
Ø32x20	0.07
Ø32x25	0.08
Ø40x20	0.13
Ø40x25	0.14
Ø40x32	0.15
Ø50x20	0.21
Ø50x25	0.22

Size (mm)	Price (USD/PCS)
Ø50x32	0.24
Ø50x40	0.25
Ø63x25	0.38
Ø63x32	0.39
Ø75x32	0.63
Ø75x63	0.64
Ø90x40	1.02
Ø90x63	1.02

90° Elbow



Size (mm)	Price (USD/PCS)
Ø20	0.05
Ø25	0.08
Ø32	0.16
Ø40	0.29
Ø50	0.51
Ø63	0.88
Ø75	1.46
Ø90	2.67

Size (mm)	Price (USD/PCS)
Ø110	4.56
Ø125	12.24
Ø160	15.10

45° Elbow



Size (mm)	Price (USD/PCS)
Ø20	0.05
Ø25	0.06
Ø32	0.14
Ø40	0.22
Ø50	0.37
Ø63	0.69
Ø75	1.18
Ø90	1.88

Size (mm)	Price (USD/PCS)
Ø110	3.02
Ø125	9.28
Ø160	11.88

90° Reduced Elbow



Size (mm)	Price (USD/PCS)
Ø25x20	0.07
Ø32x20	0.11
Ø32x25	0.13
Ø40x20	0.17
Ø40x25	0.19
Ø40x32	0.25
Ø50x25	0.30
Ø50x32	0.37

Size (mm)	Price (USD/PCS)
Ø50x40	0.44
Ø63x32	0.90
Ø63x40	1.03
Ø63x50	1.27

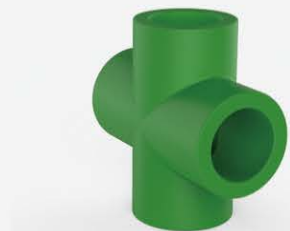
90° Equal Tee



Size (mm)	Price (USD/PCS)
Ø20	0.06
Ø25	0.11
Ø32	0.20
Ø40	0.35
Ø50	0.64
Ø63	1.17
Ø75	1.67
Ø90	3.09

Size (mm)	Price (USD/PCS)
Ø110	5.31
Ø125	13.84
Ø160	17.71

Straight Cross



Size (mm)	Price (USD/PCS)
Ø20	0.08
Ø25	0.14
Ø32	0.25
Ø40	0.44
Ø50	0.78
Ø63	2.05
Ø75	3.17
Ø90	5.39

Size (mm)	Price (USD/PCS)
Ø110	8.93

Pipe Clamp



Size (mm)	Price (USD/PCS)
Ø20	0.02
Ø25	0.02
Ø32	0.03
Ø40	0.04

Size (mm)	Price (USD/PCS)
-----------	-----------------

90° Reduced Tee



Size (mm)	Price (USD/PCS)
Ø25x20	0.09
Ø32x20	0.15
Ø32x25	0.17
Ø40x20	0.24
Ø40x25	0.30
Ø40x32	0.31
Ø50x20	0.36
Ø50x25	0.40

Size (mm)	Price (USD/PCS)
Ø50x32	0.45
Ø50x40	0.54
Ø63x25	0.69
Ø63x32	0.72
Ø75x32	1.10
Ø75x63	1.55
Ø90x40	1.87
Ø90x63	2.18

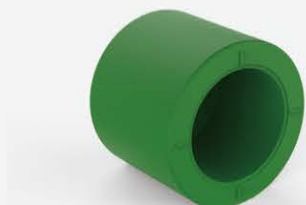
Male Thread Plug



Size (mm)	Price (USD/PCS)
R1/2"	0.02
R3/4"	0.03
R1"	0.06

Size (mm)	Price (USD/PCS)
-----------	-----------------

Cap



Size (mm)	Price (USD/PCS)
Ø20	0.02
Ø25	0.03
Ø32	0.07
Ø40	0.12
Ø50	0.23
Ø63	0.43
Ø75	0.63
Ø90	1.09

Size (mm)	Price (USD/PCS)
Ø110	1.90
Ø125	4.85
Ø160	6.18

Female Thread Adapter I



Size (mm)	Price (USD/PCS)
Ø20x1/2"	0.40
Ø20x3/4"	0.56
Ø25x1/2"	0.40
Ø25x3/4"	0.57
Ø25x1"	0.95
Ø32x1/2"	0.46
Ø32x3/4"	0.58

Size (mm)	Price (USD/PCS)
-----------	-----------------

Female Thread Adapter II



Size (mm)	Price (USD/PCS)
Ø32x1"	1.54
Ø40x1"	1.62
Ø40x1¼"	2.93
Ø50x1¼"	2.98
Ø50x1½"	3.65
Ø63x2"	5.32
Ø75x2"	5.49

Size (mm)	Price (USD/PCS)

Female Thread Elbow I



Size (mm)	Price (USD/PCS)
Ø20x1/2"	0.44
Ø20x3/4"	0.57
Ø25x1/2"	0.44
Ø25x3/4"	0.59
Ø25x1"	1.09
Ø32x1/2"	0.48
Ø32x3/4"	0.66
Ø40x3/4"	2.63

Size (mm)	Price (USD/PCS)
Ø40x1¼"	3.17
Ø50x3/4"	3.71

Male Thread Adapter I



Size (mm)	Price (USD/PCS)
Ø20x1/2"	0.52
Ø20x3/4"	0.74
Ø25x1/2"	0.53
Ø25x3/4"	0.74
Ø25x1"	1.59
Ø32x1/2"	0.57
Ø32x3/4"	0.77

Size (mm)	Price (USD/PCS)

Female Thread Elbow II



Size (mm)	Price (USD/PCS)
Ø40x1	2.91
Ø50x1"	3.91
Ø50x1¼"	3.97
Ø50x1½"	4.02
Ø63x1	5.02
Ø63x1¼"	5.10
Ø63x1½"	5.29
Ø63x2"	5.81

Size (mm)	Price (USD/PCS)

Male Thread Adapter II



Size (mm)	Price (USD/PCS)
Ø32x1"	1.89
Ø40x1"	1.97
Ø40x1¼"	4.21
Ø50x1¼"	4.40
Ø50x1½"	4.97
Ø63x2"	6.38
Ø75x2"	6.89

Size (mm)	Price (USD/PCS)

Male Thread Elbow I



Size (mm)	Price (USD/PCS)
Ø20x1/2"	0.54
Ø20x3/4"	0.77
Ø25x1/2"	0.58
Ø25x3/4"	0.79
Ø25x1"	1.74
Ø32x1/2"	0.62
Ø32x3/4"	0.84
Ø40x3/4"	3.15

Size (mm)	Price (USD/PCS)
Ø50x3/4"	4.47

Male Thread Elbow II



Size (mm)	Price (USD/PCS)
Ø32x1"	1.95
Ø40x1"	3.50
Ø40x1¼"	4.53
Ø50x1"	4.73
Ø50x1¼"	4.85
Ø50x1½"	4.93
Ø63x1"	6.00
Ø63x1¼"	6.12

Size (mm)	Price (USD/PCS)
Ø63x1½"	6.35
Ø63x2"	7.20

Union II



Size (mm)	Price (USD/PCS)
Ø20	0.14
Ø25	0.17
Ø32	0.30
Ø40	0.86
Ø50	1.57

Size (mm)	Price (USD/PCS)
-----------	-----------------

Female Thread Elbow With Seat



Size (mm)	Price (USD/PCS)
Ø20x1/2"	0.45
Ø20x3/4"	0.61
Ø25x1/2"	0.48
Ø25x3/4"	0.66

Size (mm)	Price (USD/PCS)
-----------	-----------------

Male Thread Elbow With Seat



Size (mm)	Price (USD/PCS)
Ø20x1/2"	0.58
Ø20x3/4"	0.80
Ø25x1/2"	0.61
Ø25x3/4"	0.84

Size (mm)	Price (USD/PCS)
-----------	-----------------

Female Thread Tee I



Size (mm)	Price (USD/PCS)
Ø20x1/2"	0.43
Ø20x3/4"	0.63
Ø25x1/2"	0.46
Ø25x3/4"	0.63
Ø25x1"	1.15
Ø32x1/2"	0.53
Ø32x3/4"	0.71
Ø40x3/4"	3.92

Size (mm)	Price (USD/PCS)
-----------	-----------------

Female Thread Tee II



Size (mm)	Price (USD/PCS)
Ø32x1"	1.63

Size (mm)	Price (USD/PCS)
-----------	-----------------

Male Thread Tee I



Size (mm)	Price (USD/PCS)
Ø20x1/2"	0.57
Ø20x3/4"	0.81
Ø25x1/2"	0.59
Ø25x3/4"	0.84
Ø25x1"	1.78
Ø32x1/2"	0.66
Ø32x3/4"	0.88

Size (mm)	Price (USD/PCS)

Male Thread Union



Size (mm)	Price (USD/PCS)
Ø20x1/2"	1.27
Ø20x3/4"	1.56
Ø32x1"	2.67

Size (mm)	Price (USD/PCS)

Male Thread Tee II



Size (mm)	Price (USD/PCS)
Ø32x1"	2.05

Size (mm)	Price (USD/PCS)

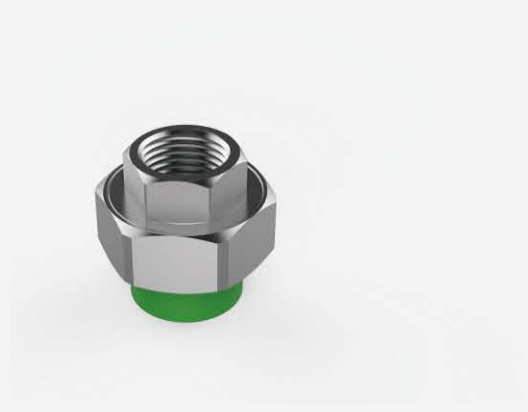
Flexible Joint I



Size (mm)	Price (USD/PCS)
Ø20x1/2"	0.76
Ø20x3/4"	0.93
Ø25x1/2"	0.80
Ø25x3/4"	0.94
Ø32x1"	1.52

Size (mm)	Price (USD/PCS)

Female Thread Union



Size (mm)	Price (USD/PCS)
Ø20x1/2"	1.16
Ø20x3/4"	1.26
Ø32x1"	2.40

Size (mm)	Price (USD/PCS)

Pipe Clamp with Steel Nail



Size (mm)	Price (USD/PCS)
Ø20	0.10
Ø25	0.13
Ø32	0.19
Ø40	0.29

Size (mm)	Price (USD/PCS)

Pipe Clamp with Expansionary Bolt



Size (mm)	Price (USD/PCS)
Ø20	0.11
Ø25	0.15
Ø32	0.21
Ø40	0.32
Ø50	0.36
Ø63	0.46
Ø75	0.62
Ø90	0.75
Ø110	0.90

Size (mm)	Price (USD/PCS)
-----------	-----------------

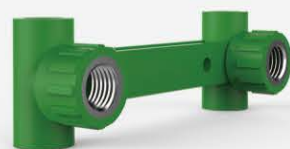
Double Female Thread Elbow with Seat



Size (mm)	Price (USD/PCS)
Ø20x1/2"	1.00
Ø25x1/2"	1.06

Size (mm)	Price (USD/PCS)
-----------	-----------------

Double Female Thread Tee with Seat



Size (mm)	Price (USD/PCS)
Ø20x1/2"	1.00
Ø25x1/2"	1.08

Size (mm)	Price (USD/PCS)
-----------	-----------------

Bending Pipe I



Size (mm)	Price (USD/PCS)
Ø20	0.11
Ø25	0.20
Ø32	0.39

Size (mm)	Price (USD/PCS)
-----------	-----------------

Bending Pipe II



Size (mm)	Price (USD/PCS)
Ø20	0.20
Ø25	0.35
Ø32	0.84

Size (mm)	Price (USD/PCS)
-----------	-----------------

Stop Valve



Size (mm)	Price (USD/PCS)
Ø20	1.40
Ø25	1.86
Ø32	3.09
Ø40	3.22
Ø50	5.63
Ø63	8.05
Ø75	9.21
Ø90	13.41

Size (mm)	Price (USD/PCS)
Ø110	20.61

Ball Valve



Size (mm)	Price (USD/PCS)
Ø20	3.51
Ø25	5.26
Ø32	7.93

Size (mm)	Price (USD/PCS)
Ø20	3.51
Ø25	5.26
Ø32	7.93

Female Thread Union Ball Valve



Size (mm)	Price (USD/PCS)
Ø20x1/2"	2.83
Ø20x3/4"	3.77
Ø32x1"	6.25
Ø40x1¼"	10.61
Ø50x1½"	17.81
Ø63x2"	24.51

Size (mm)	Price (USD/PCS)
Ø20x1/2"	2.83
Ø20x3/4"	3.77
Ø32x1"	6.25
Ø40x1¼"	10.61
Ø50x1½"	17.81
Ø63x2"	24.51

True Union Ball Valve



Size (mm)	Price (USD/PCS)
Ø20	3.37
Ø25	4.70
Ø32	7.93
Ø40	12.44
Ø50	19.51
Ø63	27.00

Size (mm)	Price (USD/PCS)
Ø20	3.37
Ø25	4.70
Ø32	7.93
Ø40	12.44
Ø50	19.51
Ø63	27.00

Bending Pipe(Cold Water)



Size (mm)	Price (USD/PCS)
Ø20	0.12
Ø25	0.19
Ø32	0.33

Size (mm)	Price (USD/PCS)
Ø20	0.12
Ø25	0.19
Ø32	0.33

Male Thread Union Ball Valve



Size (mm)	Price (USD/PCS)
Ø20x1/2"	2.88
Ø20x3/4"	3.97
Ø32x1"	6.60
Ø40x1¼"	10.63
Ø50x1½"	18.00
Ø63x2"	25.00

Size (mm)	Price (USD/PCS)
Ø20x1/2"	2.88
Ø20x3/4"	3.97
Ø32x1"	6.60
Ø40x1¼"	10.63
Ø50x1½"	18.00
Ø63x2"	25.00

Bending Pipe(Hot Water)



Size (mm)	Price (USD/PCS)
Ø20	0.19
Ø25	0.29
Ø32	0.47

Size (mm)	Price (USD/PCS)
Ø20	0.19
Ø25	0.29
Ø32	0.47

Cutter



Size (mm)	Price (USD/PCS)
Ø20~32	7.05

Size (mm)	Price (USD/PCS)

Welding Step

1. Clean the pipe socket and the fittings socket surface.
2. Mark the insertion end of the pipe.
3. Hot melt machine to be connected to the pipe and fittings heating.
4. After the heating is finished, the pipe is inserted into the fittings uniformly and steadily.
5. The cooling time shall be according to the size of the pipe, the cooling time of the large size and specification shall be appropriately extended according to the actual situation on the spot.

The welding is subject to the following data

O.D. (mm)	Welding Depth (mm)	Heating Time (s)	Welding Time (s)	Cooling Time (min)
20	14	5	4	2
25	16	7	4	2
32	18.5	8	6	4
40	20	12	6	4
50	23	18	6	4
63	27	24	8	6
75	29	30	8	8
90	33.5	40	8	8
110	39.5	50	10	8

● If the ambient temperature is below 5 °C, the heating time should be extended by 50%.



Clean



Mark



Heating



Welding



Cooling



Complete

GFD PVC-U Drainage Pipe and Fittings



PVC-U Drainage Pipe
Length : 4 - 6 meter

O.D. (mm)	Thickness (mm)	Price (USD/m)
Ø32	2.00	0.40
Ø40	2.00	0.49
Ø50	2.00	0.60
Ø75	2.30	0.98
Ø90	3.00	1.56
Ø110	3.20	1.72
Ø160	4.00	3.43
Ø200	4.90	5.82
Ø250	6.20	9.95
Ø315	7.80	16.05
Ø355	8.70	22.87
Ø400	9.80	23.76
Ø450	11.00	40.55
Ø500	12.30	42.40

PVC-U Hollow Spiral Silencing Pipe
Length : 4 - 6 meter

O.D. (mm)	Thickness (mm)	Price (USD/m)
Ø75	4.00	1.27
Ø75	5.00	1.35
Ø110	4.60	2.31
Ø110	6.00	2.32
Ø160	5.30	4.05
Ø160	7.00	4.06

PVC-U Spiral-Wall DE Noise Pipe
Length : 4 - 6 meter

O.D. (mm)	Thickness (mm)	Price (USD/m)
Ø75	2.30	1.09
Ø110	3.20	2.02
Ø160	4.00	3.70

PVC-U Drainage Pipe For High Pressure
Length : 4 - 6 meter

O.D. (mm)	Thickness (mm)	Price (USD/m)
Ø110	4.0	2.48
Ø160	5.0	4.91
Ø200	6.0	7.51
Ø250	8.0	12.46

Coupling



Size (mm)	Price (USD/PCS)
Ø32	0.05
Ø40	0.07
Ø50	0.08
Ø75	0.20
Ø90	0.37
Ø110	0.40
Ø160	0.87
Ø200	1.82

Size (mm)	Price (USD/PCS)
Ø250	3.08
Ø315	5.74
Ø355	8.97
Ø400	9.13
Ø450	34.47

45° Elbow



Size (mm)	Price (USD/PCS)
Ø32	0.06
Ø40	0.09
Ø50	0.09
Ø75	0.24
Ø90	0.60
Ø110	0.59
Ø160	1.35
Ø200	3.05

Size (mm)	Price (USD/PCS)
Ø250	5.14
Ø315	12.20

90° Elbow



Size (mm)	Price (USD/PCS)
Ø32	0.08
Ø40	0.11
Ø50	0.14
Ø75	0.32
Ø90	0.69
Ø110	0.77
Ø160	1.78
Ø200	4.12

Size (mm)	Price (USD/PCS)
Ø250	7.49
Ø315	12.63

Reducing Tee



Size (mm)	Price (USD/PCS)
Ø40x32	0.26
Ø50x40	0.30
Ø75x50	0.33
Ø90x75	0.72
Ø110x50	0.69
Ø110x75	0.83
Ø110x90	1.45
Ø160x110	1.98

Size (mm)	Price (USD/PCS)
Ø200x110	3.68
Ø200x160	4.41
Ø250x200	10.30
Ø315x250	14.14

Equal Tee



Size (mm)	Price (USD/PCS)
Ø32	0.11
Ø40	0.14
Ø50	0.16
Ø75	0.47
Ø90	0.91
Ø110	1.00
Ø160	2.56
Ø200	5.36

Size (mm)	Price (USD/PCS)
Ø250	10.69
Ø315	16.66

Wye



Size (mm)	Price (USD/PCS)
Ø32	0.12
Ø40	0.18
Ø50	0.25
Ø75	0.62
Ø90	1.57
Ø110	1.53
Ø160	3.90
Ø200	7.66

Size (mm)	Price (USD/PCS)
Ø250	23.07

Thread Expansion Joint



Size (mm)	Price (USD/PCS)
Ø50	0.33
Ø75	0.69
Ø110	1.19
Ø160	2.34

Size (mm)	Price (USD/PCS)

Long Expansion Joint



Size (mm)	Price (USD/PCS)
Ø50	0.37
Ø75	0.69
Ø90	1.15
Ø110	1.11
Ø160	2.58
Ø200	4.83

Size (mm)	Price (USD/PCS)

Simple Expansion Joint



Size (mm)	Price (USD/PCS)
Ø50	0.21
Ø75	0.46
Ø110	0.67
Ø160	1.97
Ø200	3.00

Size (mm)	Price (USD/PCS)

Double Wye



Size (mm)	Price (USD/PCS)
Ø32	0.16
Ø40	0.24
Ø50	0.35
Ø75	0.95
Ø110	2.35
Ø160	5.27

Size (mm)	Price (USD/PCS)

Combined Flexible Coupler



Size (mm)	Price (USD/PCS)
Ø50	0.33
Ø75	0.66
Ø110	1.25
Ø160	2.81
Ø200	4.70

Size (mm)	Price (USD/PCS)

Reducing Double Wye



Size (mm)	Price (USD/PCS)
Ø50x32	0.24
Ø75x50	0.49
Ø110x32	1.12
Ø110x50	1.13
Ø110x75	1.50
Ø160x110	3.31

Size (mm)	Price (USD/PCS)

Straight Cross



Size (mm)	Price (USD/PCS)
Ø50	0.23
Ø75	0.66
Ø90	1.64
Ø110	1.76
Ø160	3.72
Ø200	6.48

Size (mm)	Price (USD/PCS)

45° Elbow with Cleanout



Size (mm)	Price (USD/PCS)
Ø110	1.17
Ø160	2.16

Size (mm)	Price (USD/PCS)

Square Cross



Size (mm)	Price (USD/PCS)
Ø50	0.28
Ø75	0.83
Ø110	1.75
Ø160	7.44

Size (mm)	Price (USD/PCS)

Equal Tee with Cleanout



Size (mm)	Price (USD/PCS)
Ø110	1.73
Ø160	3.80

Size (mm)	Price (USD/PCS)

90° Elbow with Cleanout



Size (mm)	Price (USD/PCS)
Ø50	0.26
Ø75	0.65
Ø90	1.16
Ø110	1.22
Ø160	2.74
Ø200	4.68
Ø250	15.74
Ø315	23.15

Size (mm)	Price (USD/PCS)

88° Elbow



Size (mm)	Price (USD/PCS)
Ø75	0.75
Ø110	1.21
Ø160	2.84

Size (mm)	Price (USD/PCS)

Reducing Cross



Size (mm)	Price (USD/PCS)
Ø75x50	0.43
Ø110x50	0.92
Ø110x75	1.23
Ø160x110	2.87

Size (mm)	Price (USD/PCS)

Bottle Tee



Size (mm)	Price (USD/PCS)
Ø110x50	1.34
Ø110x75	1.41

Size (mm)	Price (USD/PCS)

Reducing Square Cross



Size (mm)	Price (USD/PCS)
Ø75x50	0.49
Ø110x50	1.04
Ø110x75	1.36
Ø160x110	2.83

Size (mm)	Price (USD/PCS)

Reducing Bushing



Size (mm)	Price (USD/PCS)
Ø40x32	0.05
Ø50x40	0.05
Ø75x50	0.13
Ø90x75	0.27
Ø110x50	0.29
Ø110x75	0.28
Ø110x90	0.69
Ø160x110	0.79

Size (mm)	Price (USD/PCS)
Ø200x110	1.36
Ø200x160	1.38
Ø250x200	2.52
Ø315x250	12.36

H Pipe Fitting



Size (mm)	Price (USD/PCS)
Ø75x75x75	2.33
Ø110x75x75	2.93
Ø110x110x110	3.52
Ø110x75x110	4.19
Ø160x75x75	4.31
Ø160x75x110	4.89
Ø160x75x160	6.26

Size (mm)	Price (USD/PCS)

Eccentric Reducer



Size (mm)	Price (USD/PCS)
Ø75x50	0.21
Ø110x50	0.54
Ø110x75	0.57
Ø160x110	1.25
Ø200x160	2.35

Size (mm)	Price (USD/PCS)

Vent Cap(large)



Size (mm)	Price (USD/PCS)
Ø50	0.06
Ø75	0.12
Ø110	0.24
Ø160	0.54
Ø200	2.03

Size (mm)	Price (USD/PCS)
-----------	-----------------

Silencing Cleanout Tee



Size (mm)	Price (USD/PCS)
Ø50	0.28
Ø75	0.62
Ø90	1.21
Ø110	1.12
Ø160	3.05
Ø200	4.82

Size (mm)	Price (USD/PCS)
-----------	-----------------

Vent Cap(Small)



Size (mm)	Price (USD/PCS)
Ø75	0.11
Ø110	0.23
Ø160	0.48

Size (mm)	Price (USD/PCS)
-----------	-----------------

Floor Cleanout



Size (mm)	Price (USD/PCS)
Ø50	0.11
Ø75	0.23
Ø90	0.46
Ø110	0.50
Ø160	1.09

Size (mm)	Price (USD/PCS)
-----------	-----------------

Round Floor Sink



Size (mm)	Price (USD/PCS)
Ø50	1.04
Ø75	1.13
Ø110	1.58
Ø110(large)	1.79
Ø160	4.22

Size (mm)	Price (USD/PCS)
-----------	-----------------

Reducer



Size (mm)	Price (USD/PCS)
Ø75x50	0.20
Ø110x50	0.42
Ø110x75	0.54
Ø110x90	0.82
Ø160x110	1.33

Size (mm)	Price (USD/PCS)
-----------	-----------------

Leakproof Ring



Size (mm)	Price (USD/PCS)
Ø 50	0.06
Ø 75	0.09
Ø 90	0.10
Ø 110	0.10
Ø 160	0.33

Size (mm)	Price (USD/PCS)

WC Elbow Adaptor



Size (mm)	Price (USD/PCS)
Ø110	2.08

Size (mm)	Price (USD/PCS)

Long Cleanout Tee



Size (mm)	Price (USD/PCS)
Ø50	0.57
Ø75	1.15
Ø90	2.24
Ø110	2.25
Ø160	5.27
Ø200	8.34

Size (mm)	Price (USD/PCS)

WC Adaptor



Size (mm)	Price (USD/PCS)
Ø90	1.14
Ø110	1.19

Size (mm)	Price (USD/PCS)

Cleanout (Interpolation)



Size (mm)	Price (USD/PCS)
Ø50	0.14
Ø75	0.33
Ø110	0.63
Ø160	1.22

Size (mm)	Price (USD/PCS)

Cleanout(Extrapolation)



Size (mm)	Price (USD/PCS)
Ø50	0.16
Ø75	0.34
Ø90	0.63
Ø110	0.68
Ø160	1.37
Ø200	2.64
Ø250	5.24
Ø315	7.05

Size (mm)	Price (USD/PCS)

Floor Drain



Size (mm)	Price (USD/PCS)
Ø50	0.61
Ø75	1.21
Ø110	1.88

Size (mm)	Price (USD/PCS)

Side Floor Drain



Size (mm)	Price (USD/PCS)
Ø40	0.20
Ø50	0.23
Ø75	0.66
Ø110	1.36

Size (mm)	Price (USD/PCS)

Simple Floor Drain (Extrapolation)



Size (mm)	Price (USD/PCS)
Ø50	0.17
Ø75	0.25
Ø110	0.56
Ø160	1.13

Size (mm)	Price (USD/PCS)

Square Floor Seal Drain



Size (mm)	Price (USD/PCS)
Ø50	0.60
Ø75	1.38
Ø110	2.05

Size (mm)	Price (USD/PCS)

Simple Floor Drain (Interpolation)



Size (mm)	Price (USD/PCS)
Ø50	0.15
Ø75	0.16
Ø110	0.44
Ø160	0.96

Size (mm)	Price (USD/PCS)

T-type Floor Drain



Size (mm)	Price (USD/PCS)
Ø75	1.50
Ø110	1.80

Size (mm)	Price (USD/PCS)

Multi Function Floor Drain

Size (mm)	Price (USD/PCS)
Ø50/110	0.72

Size (mm)	Price (USD/PCS)



Multi Function Floor Seal Drain

Size (mm)	Price (USD/PCS)
Ø40/50/75	0.46

Ø50/75/110 0.49

Ø50/75/90/110 0.83

Size (mm)	Price (USD/PCS)



Long Multi Function Floor Drain

Size (mm)	Price (USD/PCS)
Ø 50/ 110	0.82
Ø 75/ 110	1.06

Size (mm)	Price (USD/PCS)



Circular Floor Drain Sealed

Size (mm)	Price (USD/PCS)
Ø50	2.70
Ø75	4.47
Ø110	7.27

Size (mm)	Price (USD/PCS)



Floor Drain for Wash Machine

Size (mm)	Price (USD/PCS)
Ø50/75/110	0.51

Size (mm)	Price (USD/PCS)



Reducing Tee with Down Interpolation

Size (mm)	Price (USD/PCS)
Ø110x110x75	1.29

Size (mm)	Price (USD/PCS)



Equal Tee with Down Interpolation



Size (mm)	Price (USD/PCS)
Ø110x110x110	1.46

Size (mm)	Price (USD/PCS)

Multi-Function Pre-embedded Coupling



Size (mm)	Price (USD/PCS)
Ø110	2.34

Size (mm)	Price (USD/PCS)

Reducing Tee with Upward Interpolation



Size (mm)	Price (USD/PCS)
Ø110x110x50	1.11

Size (mm)	Price (USD/PCS)

Pre-embedded Drain



Size (mm)	Price (USD/PCS)
Ø50	1.07

Size (mm)	Price (USD/PCS)

Elbow with Interpolation



Size (mm)	Price (USD/PCS)
Ø50	0.19

Size (mm)	Price (USD/PCS)

U-Trap



Size (mm)	Price (USD/PCS)
Ø40	0.16
Ø50	0.17
Ø75	0.38
Ø90	1.05
Ø110	1.11
Ø160	3.18

Size (mm)	Price (USD/PCS)

U-Trap with Cleanout



Size (mm)	Price (USD/PCS)
Ø40	0.23
Ø50	0.26
Ø75	0.55
Ø90	1.48
Ø110	1.57
Ø160	3.52

Size (mm)	Price (USD/PCS)

Cap



Size (mm)	Price (USD/PCS)
Ø50	0.05
Ø75	0.15
Ø110	0.37
Ø160	0.86

Size (mm)	Price (USD/PCS)

S-Trap with Single Door



Size (mm)	Price (USD/PCS)
Ø40	0.51
Ø50	0.53
Ø75	1.31
Ø90	3.18
Ø110	3.33
Ø160	7.66

Size (mm)	Price (USD/PCS)

Fireproof Coupling



Size (mm)	Price (USD/PCS)
Ø75	2.92
Ø110	2.65
Ø160	4.93

Size (mm)	Price (USD/PCS)

S-Trap with Cleanout



Size (mm)	Price (USD/PCS)
Ø50	0.36
Ø75	0.83
Ø110	1.73

Size (mm)	Price (USD/PCS)

Strong-Vortex Noise-Reducing Tee



Size (mm)	Price (USD/PCS)
Ø110x110x110 x75	6.88

Size (mm)	Price (USD/PCS)

Strong-Vortex Noise-Reducing 4-way Connector(Right)



Size (mm)	Price (USD/PCS)
Ø110x110x110x75	7.99

Size (mm)	Price (USD/PCS)
-----------	-----------------

Spiral-wall Noise-Reducing Tee



Size (mm)	Price (USD/PCS)
Ø75x50	1.99
Ø110x50	3.08
Ø110x75	3.53
Ø160x110	6.91

Size (mm)	Price (USD/PCS)
-----------	-----------------

Strong-Vortex Noise-Reducing 4-way Connector(Left)



Size (mm)	Price (USD/PCS)
Ø110x110x110x75	7.99

Size (mm)	Price (USD/PCS)
-----------	-----------------

Noise-Reducing 90° Elbow with Door



Size (mm)	Price (USD/PCS)
Ø110	2.76

Size (mm)	Price (USD/PCS)
-----------	-----------------

Noise-Reducing Combined with Cleanout



Size (mm)	Price (USD/PCS)
Ø110	3.29

Size (mm)	Price (USD/PCS)
-----------	-----------------

Strengthen Eccentric Reducer



Size (mm)	Price (USD/PCS)
Ø110x50	0.79
Ø110x75	1.09

Size (mm)	Price (USD/PCS)
-----------	-----------------

S Pipe Fitting



Size (mm)	Price (USD/PCS)
Ø75	4.44
Ø90	5.01
Ø110	6.22
Ø160	13.59
Ø200	22.82

Size (mm)	Price (USD/PCS)

Pipe Clamp (without Screw)



Size (mm)	Price (USD/PCS)
Ø50	0.16
Ø75	0.18
Ø90	0.24
Ø110	0.26
Ø160	0.46
Ø200	0.73

Size (mm)	Price (USD/PCS)

Solvent Cement



Size (mm)	Price (USD/PCS)
100g	0.38
500g	1.19

Size (mm)	Price (USD/PCS)

Pipe Clamp (Screw)



Size (mm)	Price (USD/PCS)
Ø50	0.26
Ø75	0.26
Ø90	0.32
Ø110	0.33
Ø160	0.54
Ø200	0.86

Size (mm)	Price (USD/PCS)

Sealing Ring



Size (mm)	Price (USD/PCS)
Ø50	0.10
Ø75	0.15
Ø90	0.17
Ø110	0.20
Ø160	0.39
Ø200	0.77

Size (mm)	Price (USD/PCS)

Pipe Clamp (Plastic + Steel)



Size (mm)	Price (USD/PCS)
Ø50	0.27
Ø75	0.32
Ø110	0.42
Ø160	0.54
Ø200	0.66

Size (mm)	Price (USD/PCS)

Indicators of PVC-U Pipe

Color

The colour is usually white, however we are able to customize other colours upon request.

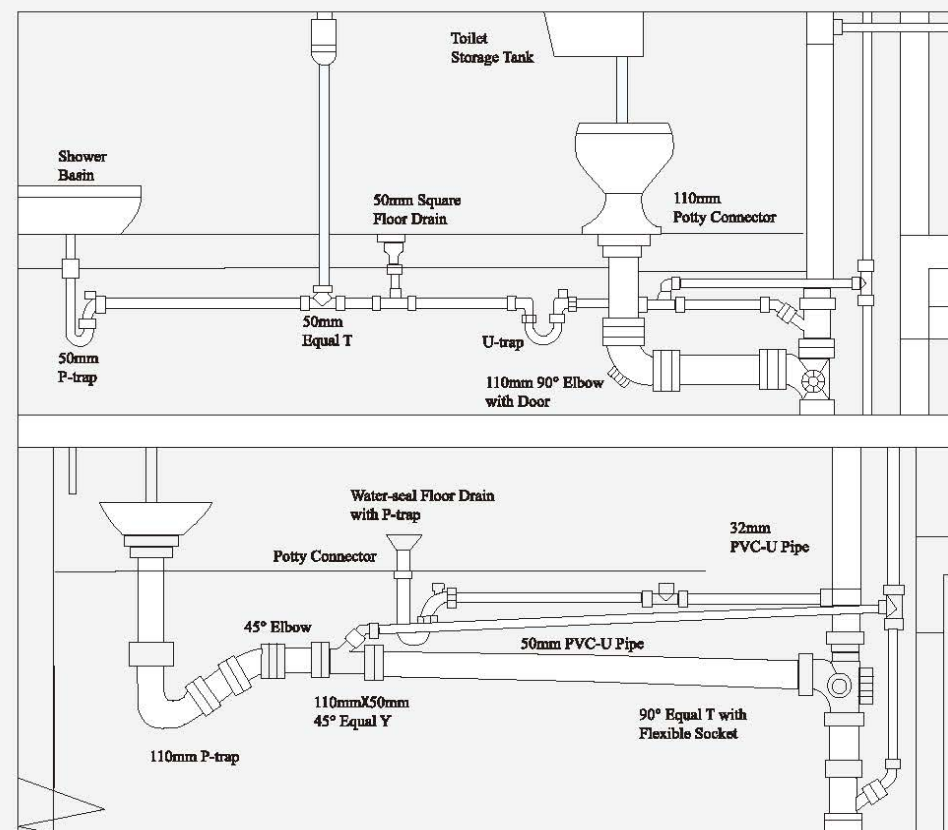
Appearance

The inner and outer walls of the pipe will be smooth with no bubbles, cracks & obvious marks, depressions, uneven colours and decomposition of colour lines. The fittings will be complete and free from defects. The gate and overflow will be repaired with smooth surface, no obvious mark, variegated or cold spot.

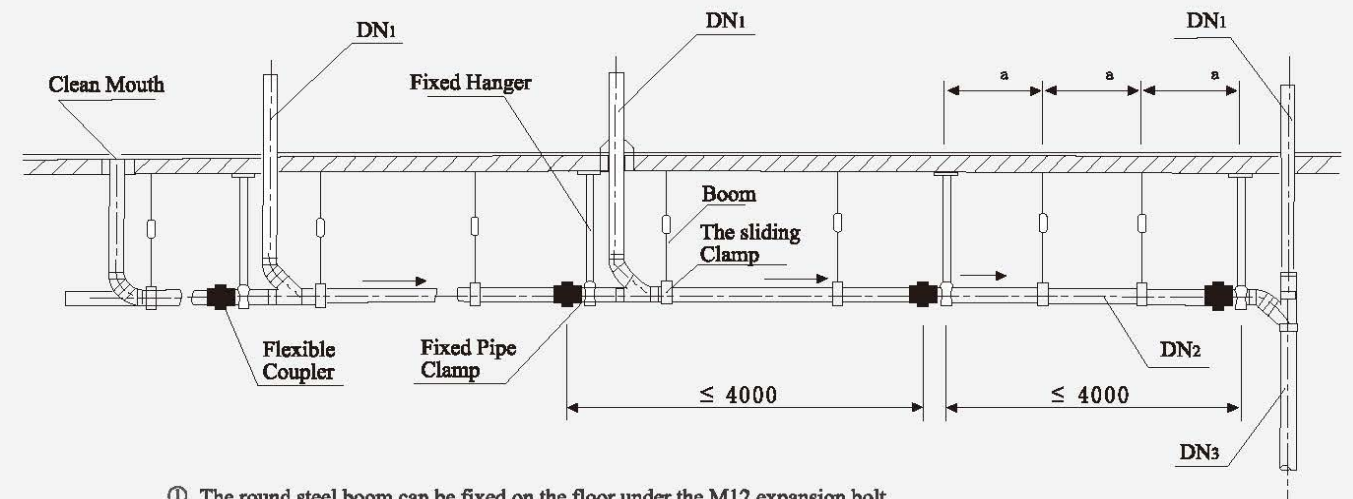
Mechanical Properties

	Pipe	Fitting
Density(kg/m ³)	1350-1550	
Vst (°C)	≥79	
Longitudinal Reversion (%)	≤5	
Dichloromethane Resistance	Surface changes are not inferior to 4L	
Tensile Strength(MPa)	≥40	
TIR(0°C, TIR)	TIR≤10%	
Oven Test	Accord with standard	
Drop Test	No rupture	
Water Tightness Test	Impermeable	
Air Tightness Test	Impermeable	

Installation of PVC-U Drainage Pipe

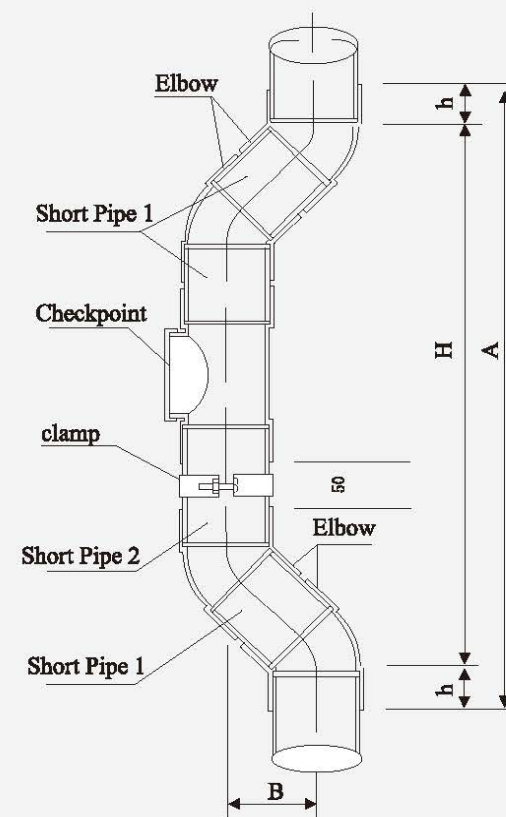


01 Flexible Coupler and Pipe Strap installed position



- ① The round steel boom can be fixed on the floor under the M12 expansion bolt.
- ② The pipe connection meets $DN_1 \leq DN_2 \leq DN_3$.
- ③ Between two Fixed Pipe Clamps can be set to the Sliding Clamp.

02 Installation of Combined Connector For De-Noise



03 Installation of High-rise drain pipe and Exhaust Pipe

