



海创传动
HAICHUANG TRANSMISSION



PRODUCT

产品自选手册 | optional manual

海纳百川 有创乃强



新乡市海创传动设备有限公司
Xinxiang Haichuang Transmission Equipment Co.Ltd

新乡市海创传动设备有限公司
XINXIANG HAICHUANG TRANSMISSION EQUIPMENT CO.LTD

地址：新乡市西环产业集聚区
长垣销售处：国际万商城27幢22号

电话：0373-2628181
手机：13937369345

邮箱：xhccd@163.com
网址：www.xhccd.com

新乡市海创传动设备有限公司是一家集研发、制造、销售于一体的传动设备制造企业。主要从事卷筒联轴器、鼓形齿式联轴器、十字轴式万向轴联轴器、各类弹性联轴器的设计制造，公司的产品销售遍及起重、港口、工矿、冶金等领域，在业界享有良好的口碑。

公司地处中原，交通便利，区域位置优越；公司目前拥有大型滚齿机、插齿机、数控滚齿机、数控机床多台，具有成套的热处理加工设备；公司凝聚了一大批专业的管理、技术人才，具有完善的组织机构和健全的管理体制。公司秉承诚信务实、开拓创新的经营理念，先后获得了《中国质量信用AAA级企业》《重合同守信用示范单位》《河南省质量管理先进企业》等荣誉。

树立精品意识、追求卓越管理、实施持续创新、满足客户要求。海创人将以领先的科技，标准化的质量，竭力与各界用户通力合作，互惠互利，携手并进，共创美好明天！

Xinxiang Haichuang Transmission Equipment Co., Ltd. is a research and development, manufacture and sales of transmission equipment manufacturing enterprises. Mainly engaged in the roll coupling, drum gear coupling, cross shaft universal couplings, flexible couplings, and all kinds of spare parts. Design and manufacture of gears, the company's product sales throughout the lifting, ports, mining, metallurgy and other fields in the Central Plains region to enjoy Good reputation. The company is located in the Central Plains, and convenient transportation, regional location; the company now has a large hobbing machine, slotting machine, CNC Hobbing machine, CNC machine tools more than one, with a complete set of heat treatment processing equipment; the company gather a large number of professional management and technical Personnel, with perfect organization and a sound management system. Companies adhering to the credibility first, quality satisfaction business purposes, Has won the "China Quality Credit AAA Enterprise" advanced "the contract and trustworthy model", "Quality Management in Henan Enterprise" honor. Establish an awareness of the pursuit of excellence management, the implementation of continuous innovation to meet customer requirements. A sea of people will be leading technology, Standardized quality, trying to work together with all users, mutual benefit, hand in hand for a better tomorrow!

优秀团队 Outstanding team

诚信务实、开拓创新是我们的经营理念

精益求精、顾客满意是我们的服务宗旨

海創

企业资质

Enterprise qualification

质量管理体系认证证书

兹证明

新乡市海创传动设备有限公司
统一社会信用代码: 91410703588549598P

注册地址: 中国河南省新乡市卫滨区西环路和香泉路交叉口西北角
审核地址: 中国河南省新乡市卫滨区西环路和香泉路交叉口西北角

建立的管理体系经审核符合以下标准要求:
GB/T19001-2016/ISO9001:2015

认证范围

卷筒联轴器、鼓齿形联轴器、万向轴的生产

证书编号: ZZW19Q17784805
发证日期: 02/04/2019 有效期至: 01/04/2022

注: 本证书的有效性依赖于获证企业持续符合认证标准的要求, 获证企业应严格按照认证标准的要求进行内部审核, 并接受认证机构的监督审核。

证书签发人:  总经理

上海中致认证有限公司 电话: 021-39528356 传真: 021-64267178
地址: 上海市嘉定区南翔镇 36 号 29 号 1118 室
证书有效期内, 中致公司网站 www.zcncg.com, 国家认证认可监督管理委员会网站 www.cnca.gov.cn

Certificate of Registration

This is to certify that

Xinxiang Haichuang Transmission Equipment Co., Ltd.
Unified social credit code: 91410703588549598P

Registered address: Northwest Corner of the Intersection of Xihuan Road and Xiangquan Road, Weibin District, Xinxiang City, Henan Province, P.R.China
Audited address: Northwest Corner of the Intersection of Xihuan Road and Xiangquan Road, Weibin District, Xinxiang City, Henan Province, P.R.China

Has been assessed as conforming to meet the requirements of
GB/T19001-2016/ISO9001:2015

for the scope of activities

Production of drum coupling, drum-shaped coupling and cardan shaft

Certificate No: ZZW19Q17784805
Issue Date: 2 April 2019 Valid until: 1 April 2022

Attention: Subject to adherence to the agreed ongoing audit programme, successful endorsement of certification following each audit and compliance with CI Regulations. Certification range of product service excludes the relevant administrative verification that are not acquired the relevant sub-certification permission, SC certification.

Signed for and on behalf of:  General Manager

Note: According to the certification requirements, the interval between the annual surveillance audit and the last spot audit cannot exceed twelve months.

Shanghai Zhongzhi Certification Co., Ltd. Tel: +86 21 3952 8356 Fax: +86 21 6426 7178
Address: 1118 No. 36 Lane 36, Nantun Road, Jiading District, Shanghai City, P.R.China

信用等级证书
CREDIT RATING CERTIFICATE

新乡市海创传动设备有限公司

针对该企业资金信用、经济效益、经营管理能力、企业创新能力、经调研、审核, 被评为

AAA级信用企业

信用代码 (Credit Number): HNYX2019T0294
发证日期: 2019年03月29日
截止日期: 2020年03月28日

主任信用分析师:  原培忠

机构印章: 

统一公示平台: 中国招标投标网
www.zhaobiaoxu.org

发证机构地址: 郑州市金水区经三路93号 联系方式: 0371-65820582

中国质量信用AAA级企业

证书号: 新乡市海创传动设备有限公司 中国质量信用AAA级企业

执行中国质量信用认证体系认证标准

有效期: 3年
颁证日期: 2019年12月31日

中国质量信用认证中心
中国质量信用认证委员会

重合同守信用示范单位

证书号: 新乡市海创传动设备有限公司 中国信用企业重合同守信用示范单位

此单位, 系中国信用企业认证体系认证标准

有效期: 3年
颁证日期: 2019年12月31日

中国信用企业认证中心
中国信用企业认证委员会

环境管理体系认证证书

兹证明

新乡市海创传动设备有限公司
统一社会信用代码: 91410703588549598P

注册地址: 中国河南省新乡市卫滨区西环路和香泉路交叉口西北角
审核地址: 中国河南省新乡市卫滨区西环路和香泉路交叉口西北角

建立的管理体系经审核符合以下标准要求:
GB/T24001-2016/ISO14001:2015

认证范围

位于中国河南省新乡市卫滨区西环路和香泉路交叉口西北角的新乡市海创传动设备有限公司的卷筒联轴器、鼓齿形联轴器、万向轴的生产的相关环境管理活动

证书编号: ZZW19E17785805
发证日期: 02/04/2019 有效期至: 01/04/2022

注: 本证书的有效性依赖于获证企业持续符合认证标准的要求, 获证企业应严格按照认证标准的要求进行内部审核, 并接受认证机构的监督审核。

证书签发人:  总经理

上海中致认证有限公司 电话: 021-39528356 传真: 021-64267178
地址: 上海市嘉定区南翔镇 36 号 29 号 1118 室
证书有效期内, 中致公司网站 www.zcncg.com, 国家认证认可监督管理委员会网站 www.cnca.gov.cn

Certificate of Registration

This is to certify that

Xinxiang Haichuang Transmission Equipment Co., Ltd.
Unified social credit code: 91410703588549598P

Registered address: Northwest Corner of the Intersection of Xihuan Road and Xiangquan Road, Weibin District, Xinxiang City, Henan Province, P.R.China
Audited address: Northwest Corner of the Intersection of Xihuan Road and Xiangquan Road, Weibin District, Xinxiang City, Henan Province, P.R.China

Has been assessed as conforming to meet the requirements of
GB/T24001-2016/ISO14001:2015

for the scope of activities

Environmental management activities in the production of drum coupling, drum-shaped coupling and cardan shaft by Xinxiang Haichuang Transmission Equipment Co., Ltd. located at Northwest Corner of the Intersection of Xihuan Road and Xiangquan Road, Weibin District, Xinxiang City, Henan Province, P.R.China

Certificate No: ZZW19E17785805
Issue Date: 2 April 2019 Valid until: 1 April 2022

Attention: Subject to adherence to the agreed ongoing audit programme, successful endorsement of certification following each audit and compliance with CI Regulations. Certification range of product service excludes the relevant administrative verification that are not acquired the relevant sub-certification permission, SC certification.

Signed for and on behalf of:  General Manager

Note: According to the certification requirements, the interval between the annual surveillance audit and the last spot audit cannot exceed twelve months.

Shanghai Zhongzhi Certification Co., Ltd. Tel: +86 21 3952 8356 Fax: +86 21 6426 7178
Address: 1118 No. 36 Lane 36, Nantun Road, Jiading District, Shanghai City, P.R.China

职业健康与安全管理认证证书

兹证明

新乡市海创传动设备有限公司
统一社会信用代码: 91410703588549598P

注册地址: 中国河南省新乡市卫滨区西环路和香泉路交叉口西北角
审核地址: 中国河南省新乡市卫滨区西环路和香泉路交叉口西北角

建立的管理体系经审核符合以下标准要求:
GB/T28001:2011/OHSAS18001:2007

认证范围

位于中国河南省新乡市卫滨区西环路和香泉路交叉口西北角的新乡市海创传动设备有限公司的卷筒联轴器、鼓齿形联轴器、万向轴的生产的相关职业健康安全活动

证书编号: ZZW19S17786805
发证日期: 02/04/2019 有效期至: 11/03/2021

注: 本证书的有效性依赖于获证企业持续符合认证标准的要求, 获证企业应严格按照认证标准的要求进行内部审核, 并接受认证机构的监督审核。

证书签发人:  总经理

上海中致认证有限公司 电话: 021-39528356 传真: 021-64267178
地址: 上海市嘉定区南翔镇 36 号 29 号 1118 室
证书有效期内, 中致公司网站 www.zcncg.com, 国家认证认可监督管理委员会网站 www.cnca.gov.cn

Certificate of Registration

This is to certify that

Xinxiang Haichuang Transmission Equipment Co., Ltd.
Unified social credit code: 91410703588549598P

Registered address: Northwest Corner of the Intersection of Xihuan Road and Xiangquan Road, Weibin District, Xinxiang City, Henan Province, P.R.China
Audited address: Northwest Corner of the Intersection of Xihuan Road and Xiangquan Road, Weibin District, Xinxiang City, Henan Province, P.R.China

Has been assessed as conforming to meet the requirements of
GB/T28001:2011/OHSAS18001:2007

for the scope of activities

Occupational health and safety management activities in the production of drum coupling, drum-shaped coupling and cardan shaft by Xinxiang Haichuang Transmission Equipment Co., Ltd. located at Northwest Corner of the Intersection of Xihuan Road and Xiangquan Road, Weibin District, Xinxiang City, Henan Province, P.R.China

Certificate No: ZZW19S17786805
Issue Date: 2 April 2019 Valid until: 11 March 2021

Attention: Subject to adherence to the agreed ongoing audit programme, successful endorsement of certification following each audit and compliance with CI Regulations. Certification range of product service excludes the relevant administrative verification that are not acquired the relevant sub-certification permission, SC certification.

Signed for and on behalf of:  General Manager

Note: According to the certification requirements, the interval between the annual surveillance audit and the last spot audit cannot exceed twelve months.

Shanghai Zhongzhi Certification Co., Ltd. Tel: +86 21 3952 8356 Fax: +86 21 6426 7178
Address: 1118 No. 36 Lane 36, Nantun Road, Jiading District, Shanghai City, P.R.China

部分设备
Some equipment



线切割机床



数控滚齿机

部分设备
Some equipment



车间一角



车间一角



加工中心



加工中心

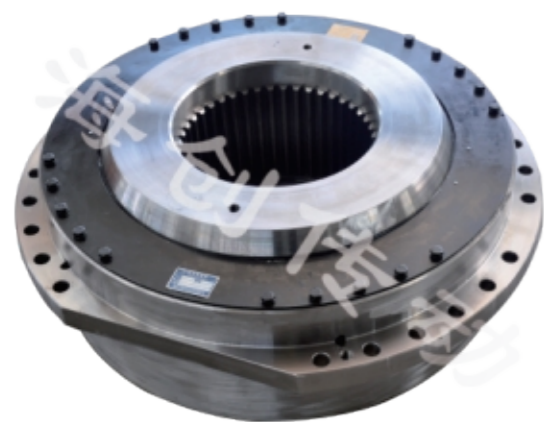


数控车床



热处理设备

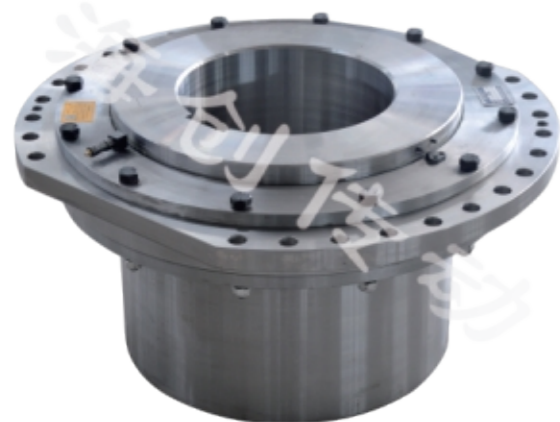
产品图片
Product pictures



WZL球铰型卷筒联轴器 (花键)



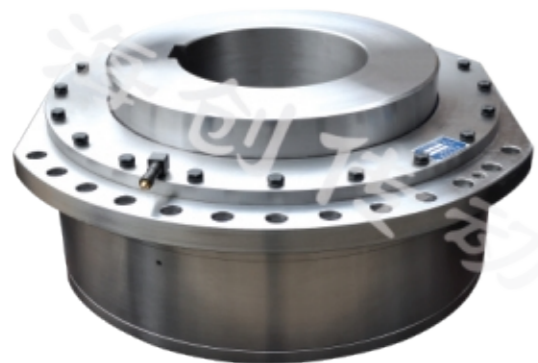
WZL球铰型卷筒联轴器 (直孔)



WJA球面滚子卷筒联轴器



WJT球面滚子卷筒联轴器



DC型卷筒用鼓形齿式联轴器



DC型卷筒用鼓形齿式联轴器

产品图片
Product pictures



GIICL中硬齿面鼓型齿联轴器



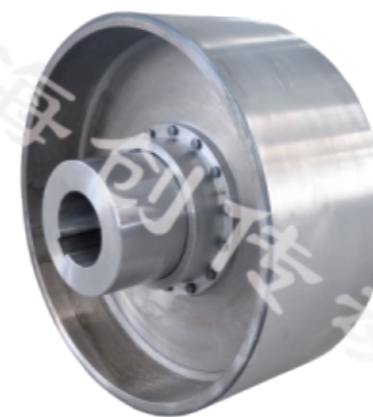
GICLZ中硬齿面鼓型齿联轴器



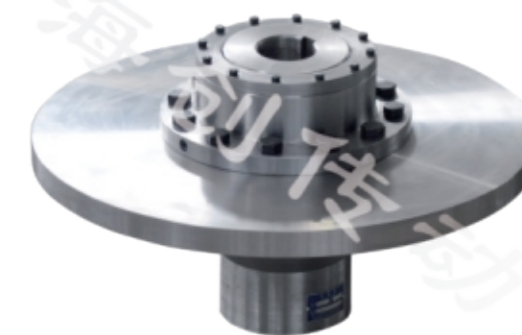
GIICL型鼓形齿式联轴器



WGT型接中间套鼓齿形联轴器



NGCLZ型鼓齿形联轴器



WGP型带制动盘鼓齿形联轴器

目 录

产品图片 Product pictures



SWF型十字轴式万向联轴器



MLLZ型带制动轮梅花弹性联轴器



MLPK型带制动盘梅花形弹性联轴器



LX型弹性柱销联轴器



LT型弹性套柱销联轴器

联轴器图例	01
联轴器轴孔和联结型式与尺寸GB/T3852-2008	06
第一部分：鼓形齿式联轴器	
CL、CLZ型齿式联轴器JB/ZQ4218-86、JB/ZQ4219-86	12
G I CL、G I CLZ型鼓形齿式联轴器JB/T8854.3-2001	14
GCLD型电机轴伸鼓形齿式联轴器GB/T26103.3-2010	17
NGCL、NGCLZ型鼓形齿式联轴器 GB/T26103.4-2010、GB/T26103.5-2010	18
GII CL、GII CLZ型鼓形齿式联轴器GB/T26103.1-2010、GB/T26103.2-2010	22
WG型带制动盘鼓形齿式联轴器JB/ZQ4186-2006	26
WGP型带制动盘鼓形齿式联轴器JB/T7001-2007	28
WGC型垂直安装鼓形齿式联轴器JB/T7002-2007	30
WGZ型带制动轮鼓形齿式联轴器JB/T7003-2007	32
WGT型接中间套鼓形齿式联轴器JB/T7004-2007	34
WGJ型接中间轴鼓形齿式联轴器GB/T26104-2010	36
TGL尼龙套鼓形齿式联轴器 JB/T5514-2007	39
GSL伸缩型鼓形齿式联轴器JB/T10540-2005	40
鼓形齿联轴器选型计算	44
第二部分：卷筒联轴器	
WZL型卷筒联轴器	46
DC系列卷筒用鼓形齿式联轴器	50
WJA、WJT球面滚子卷筒联轴器	52
卷筒联轴器订货说明及使用注意事项	56

第三部分：弹性联轴器

ML型梅花形弹性联轴器 58

MLS型双法兰梅花形弹性联轴器 60

MLLZ型带整体式制动轮梅花弹性联轴器 62

MLPK型带制动盘梅花弹性联轴器 64

MLL- I 型分体式制动轮梅花弹性联轴器 66

XL型星形弹性联轴器 68

LT、LTZ(带制动轮)弹性套柱销联轴器 69

LX、LXZ(带制动轮)弹性柱销联轴器 70

QL型滚柱销联轴器 71

ZL型弹性柱销齿式联轴器 72

JS型蛇弹簧联轴器 73

UL型轮胎式联轴器 74

GL型滚子链联轴器 74

第四部分:十字轴式万向联轴器

SWC型整体叉头十字轴式万向联轴器BH、BF、DH、CH、WH、WF、WD型 - - -76

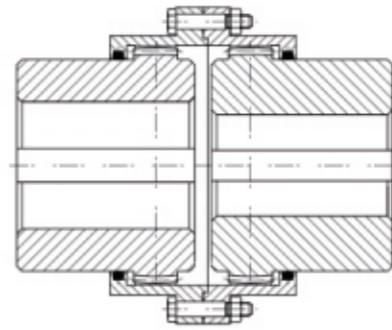
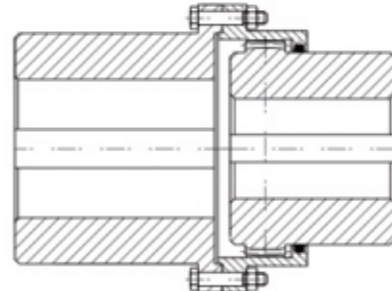
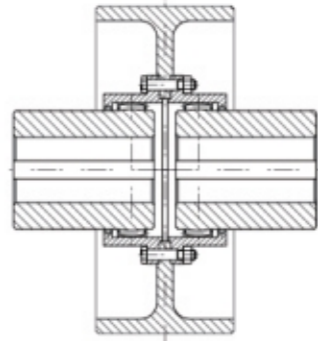
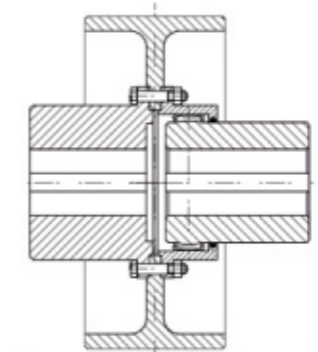
SWP型剖分轴承座十字轴式万向联轴器A、B、C、D、E、F、G型 84

SWF、JXC型剖分轴承十字轴式万向联轴器 92

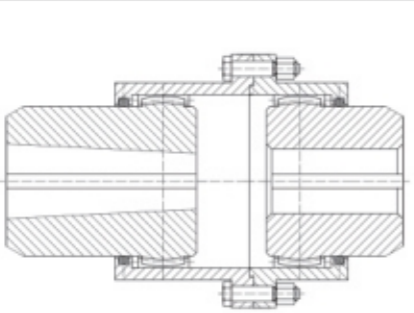
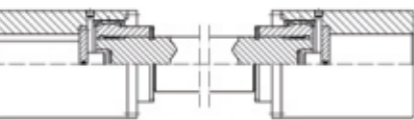
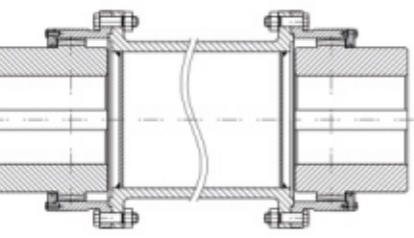
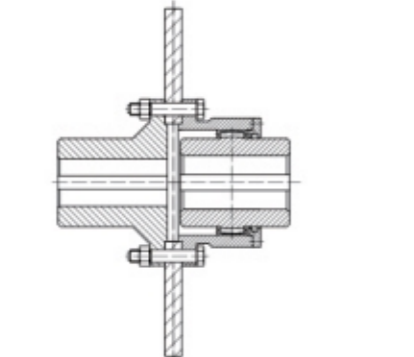
螺纹紧固件预紧力推荐值 94

注:样本数据仅供参考,具体执行标准以合同及图纸为准!

联轴器图例
Coupling the legend

名称 Name	图例 The structure	特点及应用 Features and Applications
G II CL鼓形齿式联轴器 G II CL crown gear coupling		结构紧凑,转动惯量小,具有一定角向及相对径向位移补偿能力,联接水平两同轴线轴系传动。适用于与闸瓦式制动器配套场合。 公称转矩0.63-125KN.M With compact structure,small moment of inertia,and can compensate the angular displacement and radial displacement in the limited range.It can be applied to the connection of two horizontal shafts. Nominal torque 0.63-5600 KN.m
G II CLZ鼓形齿式联轴器 G II CLZ crown gear coupling		结构紧凑,转动惯量小,具有一定角向偏移补偿能力,联接水平两同轴线轴系传动。 公称转矩0.63-5600KN.m With compact structure,small moment of inertia,and can compensate the angular displacement in the limited range.It can be applied to the connection of two horizontal shafts. Nominal torque 0.63-5600 KN.m
NGCL鼓形齿联轴器 NGCL crown gear coupling with brake drum		结构紧凑,转动惯量小,具有一定角向及相对径向位移补偿能力,联接水平两同轴线轴系传动。适用于与闸瓦式制动器配套场合。 公称转矩0.63-125KN.M With compact structure,this type can compensate the angular displacement and radial displacement in the limited range.It can be applied to the connection of two horizontal shafts wish shoe brake. Nominal torque 0.63-125 KN.m
NGCLZ鼓形齿式联轴器 NGCLZ crown gear coupling with brake drum		结构紧凑,转动惯量小,具有一定角向及相对径向位移补偿能力,联接水平两同轴线轴系传动。 公称转矩0.63-5600KN.m With compact structure,this type can compensate the angular displacement and radial displacement in the limited range.It can be applied to the connection of two horizontal shafts wish shoe brake. Nominal torque 0.63-125 KN.m

联轴器图例
Coupling the legend

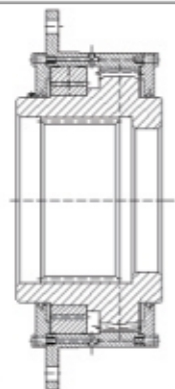

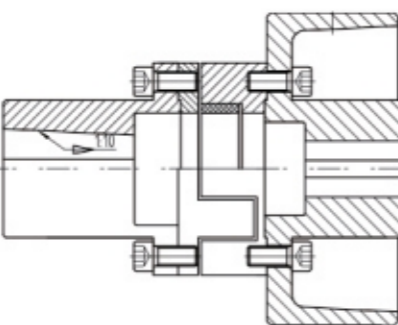
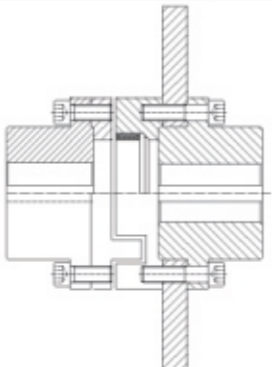
名称 Name	图例 The structure	特点及应用 Features and Applications
GCLD鼓形齿式联轴器 GCLD crown gear coupling		具有一定角向及相对径向位移补偿能力, 适用于联接电动机与机械两水平同轴线轴系传动。 公称转矩: 1.6-56KN.m This type can compensate the angular displacement and radial displacement in the limited range, used for connecting motor and mechanical different levels, different axis shaft transmission. Nominal torque 1.6-56KN.m
WGJ接中间轴鼓形齿式联轴器 WGJ crown gear coupling with intermediate shaft		具有一定角向及轴向位移补偿能力, 结构紧凑, 适用于联接轴向尺寸较大时的水平两同轴线轴系传动。 公称转矩: 6.3-3150KN.m This type can compensate the angular displacement and axial displacement in the limited range with compact structure, which would suit for the long concentric shaft connection in horizontal. Nominal torque 6.3-3150KN.m
WGT接中间套鼓齿形联轴器 WGT crown gear coupling with intermediate tube		适用于联接两同轴线传动轴系的联轴器, 并具有一定补偿两轴相对位移性能。 公称转矩0.8-1400KN.m Apply to join the two coaxial shaft coupling, and two axes relative displacement performance has a certain compensation. Nominal torque 0.8-1400 KN.m
WGP型带制动盘鼓形齿式联轴器 WGP crown gear coupling with brake disc		适用于联接两同轴线传动轴系的联轴器, 并具有一定补偿两轴相对位移性能。 公称转矩0.8-1400KN.m Apply to join the two coaxial shaft coupling, and two axes relative displacement performance has a certain compensation. Nominal torque 0.8-1400 KN.m

联轴器图例
Coupling the legend

名称 Name	图例 The structure	特点及应用 Features and Applications
WZL卷筒联轴器 (花键型) WZL drum coupling (spline type)		能承受大的径向载荷和传递较大的转矩, 可靠性和安全性高。多用于起重机卷筒和减速机之间的连接。公称转矩 6.3-1490KN.m Can withstand the big radial direction load and transmit large torque, high reliability and safety. Many used to hoist roller and the connection between the reducer. Nominal torque 6.3-1490 KN.m
WZL卷筒联轴器 (直孔型) WZL drum coupling (straight groove)		能承受大的径向载荷和传递较大的转矩, 可靠性和安全性高。用于起重机卷筒和减速机之间的连接。公称转矩 6.3-1490KN.m Can withstand the big radial direction load and transmit large torque, high reliability and safety. Many used to hoist roller and the connection between the reducer. Nominal torque 6.3-1490 KN.m
WJT卷筒联轴器 (花键型) WJT drum coupling (spline type)		能承受大的径向载荷和传递较大的转矩, 系列化设计, 调位性能好。用于起重机卷筒和减速机之间的连接。 公称转矩5-900KN.m Can withstand the big radial direction load and transmit large torque, high reliability and safety. Used to hoist roller and the connection between the reducer. Nominal torque 6.3-1490 KN.m
WJA卷筒联轴器 (直孔型) WJA drum coupling (straight groove)		能承受大的径向载荷和传递较大的转矩, 系列化设计, 调位性能好。用于起重机卷筒和减速机之间的连接。 公称转矩5-710KN.m Can withstand the big radial direction load and transfer bigger torque, seriation design, the performance is good. Used to hoist roller and the connection between the reducer. Nominal torque 5-710 KN.m

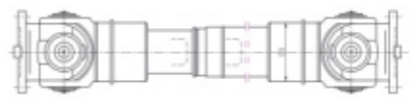
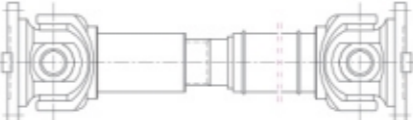
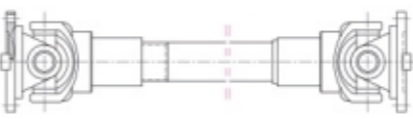
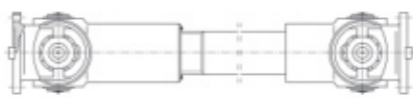
联轴器图例

Coupling the legend

名称 Name	图例 The structure	特点及应用 Features and Applications
DC卷筒联轴器(花键型) DC drum coupling (spline type)		能承受大的径向载荷和传递较大的转矩，过载能力大，安装方便，维护简单！用于起重机卷筒和减速机之间的连接公称转矩16-560KN.m。 Can withstand the big radial direction load and transfer bigger torque, large overload capacity, convenient installation, simple maintenance. Used to hoist roller and the connection between the reducer. Nominal torque 16-560 KN.m
DC卷筒联轴器(直孔型) DC drum coupling (straight groove)		能承受大的径向载荷和传递较大的转矩，过载能力大，安装方便，维护简单！用于起重机卷筒和减速机之间的连接公称转矩16-560KN.m。 Can withstand the big radial direction load and transfer bigger torque, large overload capacity, convenient installation, simple maintenance. Used to hoist roller and the connection between the reducer. Nominal torque 16-560 KN.m
MLLZ梅花制动轮联轴器 MLLZ plum brake wheel shaft coupling		工作稳定可靠，具有良好的减振、缓冲性能，结构紧凑，无需润滑，使用寿命长。适用于启动频繁、正反转、中高速的工作场合。公称转矩0.25-31.5KN.m Work stable and reliable, has the good vibration damping, buffering performance, compact structure, no lubrication, long service life. Suitable for frequent start and positive & negative, work in high speed. Nominal torque 0.25-31.5 KN.m
MLPK梅花制动盘联轴器 MLPK coupling with brake disk		工作稳定可靠，具有良好的减振、缓冲性能，结构紧凑，无需润滑，使用寿命长。适用于启动频繁、正反转、中高速的工作场合。公称转矩0.63-31.5KN.m Work stable and reliable, has the good vibration damping, buffering performance, compact structure, no lubrication, long service life. Suitable for frequent start and positive & negative, work in high speed. Nominal torque 0.63-31.5 KN.m

联轴器图例

Coupling the legend

名称 Name	图例 The structure	特点及应用 Features and Applications
SWC型十字轴式万向联轴器(BH型) SWC Series universal joint shaft(BH)		用于联接两个不同轴系的传动轴系。回转直径为100mm-550mm；公称转矩为2.5KN.m-1000 KN.m；轴线折角15°--25° Used to join two coaxial transmission shafting system. Turning diameter is 160 mm--650mm; Nominal torque is 20KN.M--1600KN. M. Axis Angle 5°--15°
SWP型十字轴式万向联轴器(A型) SWP Series universal joint shaft(A)		用于联接两个不同轴系的传动轴系。回转直径为160mm-650mm；公称转矩为20KN.m-1600 KN.m；轴线折角5°--15° Used to join two coaxial transmission shafting system. Turning diameter is 160 mm--650mm; Nominal torque is 20KN.M--1600KN. M. Axis Angle 5°--15°
JXC十字轴式万向联轴器 JXC Series universal joint shaft		能承受的转矩较小，回转夹角大，经济型 公称转矩1.1-21KN.m Able to withstand the torque is small, rotation Angle is large, affordable Nominal torque 1.1-21 KN.m
SWF十字轴式万向联轴器 SWF Series universal joint shaft		能承受较大的转矩。转动平稳，使用寿命长。公称转矩51-1183KN.m Can bear larger torque. Steady running and long service life. Nominal torque 51-1183 KN.m

联轴器轴孔和联结型式与尺寸

(GB/T3852-2008)

Coupling shaft hole and connection types and dimensions

轴孔型式及代号:

名称	型式及代号	图示
圆柱形轴孔	Y型	
有沉孔的短圆柱形轴孔	J型	
有沉孔的长圆锥形轴孔	Z型	
圆锥形轴孔	Z1型	

联结型式及代号:

名称	型式及代号	图示
平键单键槽	A型	
120°布置平键双键槽	B型	
180°布置平键双键槽	B1型	
圆锥形轴孔平键单键槽	C型	
圆柱形轴孔普通切向键键槽	D型	

联轴器轴孔和联结型式与尺寸

(GB/T3852-2008)

Coupling shaft hole and connection types and dimensions

直径d		长度		沉孔尺寸		A型、B型、B1型键槽					B型键槽	D型键槽				
公称尺寸	极限偏差H7	L		L1	d1	R	b		t		t1	T	t3		b1	
		长系列	短系列				公称尺寸	极限偏差P9	公称尺寸	极限偏差			公称尺寸	极限偏差		位置度公差
6	+0.012/0									7.0						
7		18					2			8.0						
8			-							9.0						
9	+0.015/0	22								10.4						
10				-	-	-	3			11.4						
11		25	22							12.8						
12							4			13.8	+0.1/0					
14	+0.018/0	32	27							16.3						
16							5			18.33						
18		42	30	42						20.8			0.03			
19										21.8						
20					38		6			22.8						
22										24.8						
24	+0.021/0	52	38	52		1.5				27.3						
25										28.3						
28		62	44	62	48		8			31.3						
30										33.3						
32										35.3						
35		82	60	82	55					38.3						
38							10			41.3						
40	+0.025/0				65					43.3						
42						2.0	12			45.3	+0.2/0					
45		112	84	112	80					48.8						
48							14			51.8						
50					95					53.8						

联轴器轴孔和联结型式与尺寸

(GB/T3852-2008)

Coupling shaft hole and connection types and dimensions

公称尺寸	极限偏差H7	长度		沉孔尺寸	A型、B型、B1型键槽			B型键槽	D型键槽	
		L	L1		b	t	t1		T	t3
55		112	84	112	95	16	59.3	63.6		
56							60.3	64.6		
60							64.4	68.8	0.04	19.3
63					105	18	67.4	71.8		19.8
65	+0.030 0	142	107	142			69.4	73.8		20.1
70							74.9	79.8		21.0
71					120	20	75.9	80.8		22.4
75							79.9	84.8		23.2
80					140	22	85.4	90.8	0.05	24.0
85		172	132	172			90.4	95.8		24.8
90					160	25	95.4	100.8		25.6
95	+0.035 0						100.4	105.8		27.8
100					180	28	106.4	112.8		28.6
110		212	167	212			116.4	122.8		30.1
120					210	32	127.4	134.8		33.2
125							132.4	139.8		33.9
130							137.4	144.8		34.6
140		252	202	252	235	36	148.4	156.8		37.7
150	+0.040 0						158.4	166.8		39.1
160					262	40	169.4	178.8	0.08	42.1
170		302	242	302			179.4	188.8		43.5
180							190.4	200.8		44.9
190					330	45	200.4	210.8		49.6
200		352	282	352			210.4	220.8		51.0
220	+0.046 0						231.4	242.8		57.1
240							252.4	264.8		59.9
250		410	330			56	262.4	274.8	+0.6 0	64.6
260							272.4	284.8		66.0
280	+0.052 0					63	292.4	304.8		72.1
300		470	380				314.4	328.8		74.8
320						70	334.4	348.8		81.0
340	+0.057 0						355.4	370.8		83.6
360		550	450			80	375.4	390.8		93.2

联轴器轴孔和联结型式与尺寸

(GB/T3852-2008)

Coupling shaft hole and connection types and dimensions

直径d	长度	沉孔尺寸	A型、B型、B1型键槽						B型键槽	D型键槽			
			L		L1	d1	R	b		t		T	t3
公称尺寸	极限偏差H7	长系列	短系列	公称尺寸				极限偏差P9	公称尺寸	极限偏差	公称尺寸		极限偏差
380	+0.057 0	550	450			80	-0.032 -0.106	395.4		410.8	0.10	26	95.9
400								417.4		434.8			98.6
420						90		437.4		454.8		30	108.2
440								457.4		474.8			110.9
450								459.9		489.0			112.3
460	+0.063 0	650	540			100	-0.037 -0.124	479.5		499.0			120.1
480								499.5	+0.3 0	519.0	+0.6 0	34	123.1
500								519.5		539.0			125.9
530								552.2		574.4			136.7
560						110		582.2		604.4		38	140.8
600	+0.070 0	800	680					624.5		649.0			153.1
630						120		654.5		679.0	0 -0.12	42	157.1
670												71	201.0
710												75	213.0
750	+0.080 0		780									80	225.0
800												85	240.0
850			880									90	255.0
900												95	270.0
950	+0.090 0		980									100	285.0
1000													300.0
1060			1100										
1120													
1180	+0.150 0		1200										
1250			1300										

注：1、b的极限偏差，也可采用GB1095-79《平键 键和键槽的泡面尺寸中规定的Js9。
 2、直径大约1000mm的键联结尺寸有设计者选定。
 3、沉孔亦可制作成d₁为小端直径，锥度为30°的锥形孔。
 4、t₁只适用于B1型键槽。