

# PRODUCT CATALOGUE





# Company Profile

## ABOUT US

LuxCell Biotechnology is an enterprise committed to developing and manufacturing high-quality consumables and reagents applied in cell culture and cell-based assays in life science research and drug development. It was founded by a team composed of many senior elites in the industry, whose core members have rich experience in R&D and marketing, helping us provide customers with high-quality and more reliable domestic products and more flexible and efficient services.

## Our Vision

To become a leading manufacturer in cell culture consumables and reagents.


## Our mission

To satisfy our customer requirements for high quality, convenience and reliable cost in research and production by providing premium cell culture products.



# Contents

▶ Cell Culture Flasks .....	01
▶ Cell Culture Multi-well Plates .....	02
▶ Cell Culture Dishes .....	03
▶ Erlenmeyer Flasks/Baffled Erlenmeyer Flasks .....	04
▶ High Efficiency Flask .....	05
▶ Conical Tube .....	06
▶ Bioreactor 50 .....	07
▶ Pipette Tips .....	08
▶ Serological Pipets .....	09
▶ Tri-coded 2D Cryotube .....	10
▶ Square PET/PETG Media Bottle .....	12
▶ Polycarbonate (PC) bottle .....	13
▶ 96 well Black Microplate .....	14
▶ Premium Grade Fetal Bovine Serum .....	15



## Cell Culture Flasks

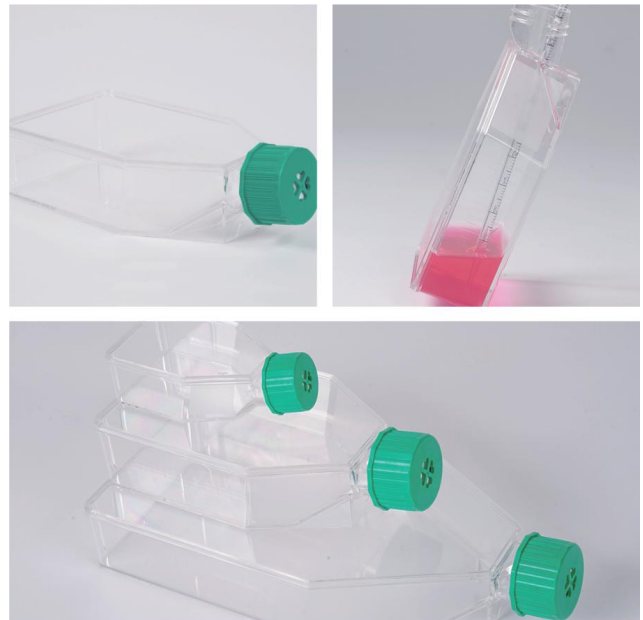
LuxCell cell culture flasks are available in 4 sizes with treated or non-treated surfaces. Depending on the surface treatment process, flasks with TC treated are hydrophilic (for adherent cells), without TC treated are hydrophobic (for suspended cells). The enlarged hydrophobic filter membrane on the cap can fully meet the demand for gas exchange in cell culture.

The cell culture flasks are produced by fully automated machinery in the C-level purification workshop, which meet the standards of the ISO13485. Therefore, the consistency, re-reproducibility and reliability of the products are guaranteed.

The high-quality raw materials, world-class premium molds and optimized production processes, enable LuxCell cell culture flasks to be fully comparable to the products from the most famous brands.

### FEATURES

- ▶ Made of high quality, optically clear virgin polystyrene, fully meet USP VI
- ▶ Wide, angled neck and the optimized ramp from the bottom to the neck, for easy access to entire growth surface
- ▶ The labelling area is convenient for marking and no impact to observe the cell growth status
- ▶ Stackable culture flask can maximize the usage of incubator
- ▶ Printed lot number at the side of the flask and on the pack bag for easy traceability
- ▶ Vacuum packaging in sterile ziplock bags
- ▶ DNase-free, RNase-free, and non-pyrogenic



### Order Information

#### ■ TC Treated

Cat. No.	Description	Culture Area (cm <sup>2</sup> )	Cap	Qty/Case
F211025	25cm <sup>2</sup> cell culture flask	25	Vent Cap	10/Pk,20Pk/Cs
F211075	75cm <sup>2</sup> cell culture flask	75	Vent Cap	5/Pk,20Pk/Cs
F211175	175cm <sup>2</sup> cell culture flask	175	Vent Cap	5/Pk,8Pk/Cs
F211225	225cm <sup>2</sup> cell culture flask	225	Vent Cap	5/Pk,8Pk/Cs

#### ■ TC Non-treated

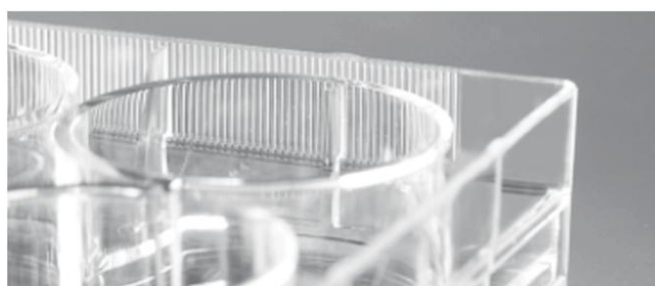
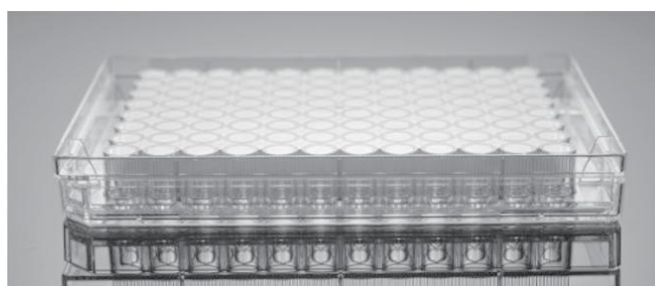
Cat. No.	Description	Culture Area (cm <sup>2</sup> )	Cap	Qty/Case
F201025	25cm <sup>2</sup> cell culture flask	25	Vent Cap	10/Pk,20Pk/Cs
F201075	75cm <sup>2</sup> cell culture flask	75	Vent Cap	5/Pk,20Pk/Cs
F201175	175cm <sup>2</sup> cell culture flask	175	Vent Cap	5/Pk,8Pk/Cs

## Cell Culture Multi-well Plates

LuxCell cell culture plates are available in 5 most commonly used format (6~96 well) with TC treated or non-treated surface for different cell line culture needs. Manufactured with high quality optically clear virgin polystyrene, which meet the medical grade of USP VI, the cell culture plates have excellent optical and chemical properties, for easy observation under a microscope.

### FEATURES

- ▶ Vacuum plasma surface treatment secure the consistency within each well across the plate
- ▶ Optimized the match of the lid and the plate, to ensure gas exchange and reduce the evaporation and risk of cross-contamination
- ▶ Indicating letters and numbers are engraved beside the well for easy identification
- ▶ Sterile, DNase-free, RNase-free, non-pyrogenic



### Order Information

Cat. No.	Description	Color	Single well surface area (cm <sup>2</sup> )	Recommended working volume (mL/well)	Treatment	Qty/Case
014006	6-well cell culture plates	Clear	9.5	1.9~2.9	TC treated	Individually packed,25/Pk,4Pk/Cs
014012	12-well cell culture plates	Clear	3.8	0.76~1.14	TC treated	Individually packed,25/Pk,4Pk/Cs
014024	24-well cell culture plates	Clear	1.9	0.38~0.57	TC treated	Individually packed,25/Pk,4Pk/Cs
014048	48-well cell culture plates	Clear	0.95	0.19~0.285	TC treated	Individually packed,25/Pk,4Pk/Cs
014096	96-well cell culture plates	Clear	0.32	0.1~0.2	TC treated	Individually packed,25/Pk,4Pk/Cs
004006	6-well cell culture plates	Clear	9.5	1.9~2.9	TC non-treated	Individually packed,25/Pk,4Pk/Cs
004012	12-well cell culture plates	Clear	3.8	0.76~1.14	TC non-treated	Individually packed,25/Pk,4Pk/Cs
004024	24-well cell culture plates	Clear	1.9	0.38~0.57	TC non-treated	Individually packed,25/Pk,4Pk/Cs
004048	48-well cell culture plates	Clear	0.95	0.19~0.285	TC non-treated	Individually packed,25/Pk,4Pk/Cs
004096	96-well cell culture plates	Clear	0.32	0.1~0.2	TC non-treated	Individually packed,25/Pk,4Pk/Cs

## Cell Culture Dishes

LuxCell cell culture dishes are made of high-quality polystyrene (PS) raw materials. Two different types of dishes are available, TC treatment and non-TC treatment. They are suitable for inoculation, streaking, weighing, separation and treatment of tissues or cells.

### FEATURES

- ▶ High uniformity, without any uneven surface
- ▶ Easy-to-grip flat bottom and side gear ring makes it easier to grasp even with a gloved hand
- ▶ Raised outer edge on dish lid allows stable stacking even in transportation
- ▶ Dish lid has regular protrusions on the inner part, minimize the contamination and evaporation
- ▶ Vacuum gas plasma treated for optimal cell attachment
- ▶ RNase/DNase free, non-cytotoxic, non-pyrogenic
- ▶ Irradiation sterilization to SAL  $10^{-6}$



### Order Information

#### ■ TC Treated

Cat. No.	Description	Diameter(mm)	Qty/Case
271060	60mm cell culture dishes	60	10/Pk,50Pk/Cs
271100	100mm cell culture dishes	100	10/Pk,20Pk/Cs
271150	150mm cell culture dishes	150	5/Pk,20Pk/Cs

#### ■ TC Non-treated

Cat. No.	Description	Diameter(mm)	Qty/Case
281060	60mm cell culture dishes	60	10/Pk 50Pk/Cs
281100	100mm cell culture dishes	100	10/Pk 20Pk/Cs
281150	150mm cell culture dishes	150	5/Pk 20Pk/Cs

## Erlenmeyer Flasks/Baffled Erlenmeyer Flasks

LuxCell Erlenmeyer flask is designed for cell lines with high oxygen requirements. It can also be used for bacteria, fungi, animal and plant cells culture in suspension. Or for medium preparation, mixing and storage. Baffled Erlenmeyer Flasks is the model has baffle indents bottom, provide greater turbulence to improve oxygen transfer rate or aeration during the cell culture

### FEATURES

- ▶ High quality material, PETG or PC complies with USP VI
- ▶ Produced in the cGMP standard workshop, without any direct personnel contact, so to ensure consistency and reliability of every batch of products
- ▶ High-strength HDPE cap with PTFE vent membrane, can provide well-sealed while hydrophobic and breathable condition for cell culture
- ▶ Clear and accurate scales, convenient for observation of the medium capacity
- ▶ 4 sizes available: 125mL, 250mL, 500mL, 1000mL
- ▶ Independently packaged, sterile, DNase-free, RNase-free, and non-pyrogenic



### Order Information

#### PETG

Cat. No.	Volume	Height(mm)	Neck Diameter(mm)	Bottom Diameter(mm)	Cap	Qty/Case
F224125	125mL	112.8(W/O Cap) 115.8(W Cap)	29.4	66	Vent Cap	1/Pk,50/Cs
F224250	250mL	137.8(W/O Cap) 140.8(W Cap)	39	83	Vent Cap	1/Pk,50/Cs
F224500	500mL	175.8(W/O Cap) 178.8(W Cap)	39	101	Vent Cap	1/Pk,25/Cs
F224210	1000mL	213.3(W/O Cap) 216.8(W Cap)	39	127	Vent Cap	1/Pk,25/Cs

#### PC

Cat. No.	Volume	Height(mm)	Neck Diameter(mm)	Bottom Diameter(mm)	Cap	Qty/Case
F294125	125mL	112.8(W/O Cap) 115.8(W Cap)	29.4	66	Vent Cap	1/Pk,50/Cs
F294250	250mL	137.8(W/O Cap) 140.8(W Cap)	39	83	Vent Cap	1/Pk,50/Cs
F294500	500mL	175.8(W/O Cap) 178.8(W Cap)	39	101	Vent Cap	1/Pk,25/Cs
F294210	1000mL	213.3(W/O Cap) 216.8(W Cap)	39	127	Vent Cap	1/Pk,25/Cs

#### PC, Baffled

Cat. No.	Volume	Height(mm)	Neck Diameter(mm)	Bottom Diameter(mm)	Cap	Qty/Case
F234125	125mL	112.8(W/O Cap) 115.8(W Cap)	29.4	66	Vent Cap	1/Pk,50/Cs
F234250	250mL	137.8(W/O Cap) 140.8(W Cap)	39	83	Vent Cap	1/Pk,50/Cs
F234500	500mL	175.8(W/O Cap) 178.8(W Cap)	39	101	Vent Cap	1/Pk,25/Cs
F234210	1000mL	213.3(W/O Cap) 216.8(W Cap)	39	127	Vent Cap	1/Pk,25/Cs

## High Efficiency Flask

LuxCell high efficiency Erlenmeyer flasks are widely used for cell culture in microbiology and cell biology application, and can be used with large-capacity culture shakers. The Erlenmeyer flasks are produced in the cGMP standard workshop, without any direct personnel contact, so to ensure consistency and reliability of every batch of products.

### FEATURES

- ▶ PC without bisphenol A
- ▶ One-time molding process (injection-stretch-blowing) are used to ensure high performance of liquid-tight seal
- ▶ Larger ventilation membrane provide better gas exchange for high-density cell culture, and secure better cell yields
- ▶ 5L flask is equipped with an ergonomic handle for easy handling and liquid transfer
- ▶ Cap equipped with high quality 0.2µm vent membrane for sterile gas exchange. Optional liquid transfer cap is available
- ▶ 2 sizes available: 3L & 5L
- ▶ Sterilized by Gamma radiation, DNase-free, RNase-free, and non-pyrogenic



### Order Information

#### ■ PC

Cat. No.	Volume	Height (mm)	Neck Diameter (mm)	Bottom Diameter (mm)	Cap	Qty/Case
F234230-1	3L	245	70	163	Vent Cap	1/Pk,4/Cs
F234250-1	5L	281	90	230.26	Vent Cap	1/Pk,4/Cs

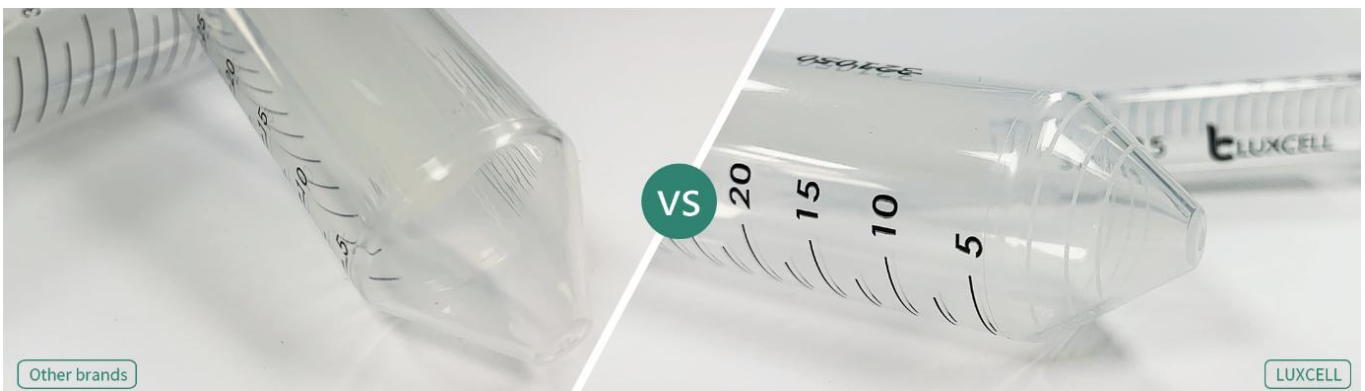


## Conical Tube

LuxCell high-performance conical tubes, are produced in the GMP 100,000 clean workshop, with high-precision molds and high-quality polypropylene materials which meet USP Class VI standards. The conical tubes are widely used for collecting, dispatching and centrifugation of various biological samples. and can meet various biological & chemical analysis requirements.

### FEATURES

- ▶ Unique dual-thread design of the cap ensures firm sealing
- ▶ Uniformity and smoothness of the tube wall helps higher level G-force tolerance and low sample residue
- ▶ Black printed graduations and a large white marking spot, make observation and record easier
- ▶ Graduations on tube corn at the bottom further help to improve the accuracy
- ▶ Rigorous leak-proof testing
- ▶ G-force tolerance 16000g
- ▶ RNase/DNase free, non-cytotoxic, non-pyrogenic
- ▶ Irradiation sterilization to SAL 10<sup>-6</sup>



[Work at 16000g, 30min, 50ml conical tube with 40ml buffer]

Luxcell tube: even and uniform wall support better centrifugal result.

Tubes from other brands: obvious crack because of the intolerance of the high g-force.

### Order Information

Cat. No.	Description	Sterile	Qty/Case
321015	15mL Conical tube	Yes	50/Pk, 10Pk/Cs
321050	50mL Conical tube	Yes	25/Pk, 20Pk/Cs

## Bioreactor 50

Luxcell Bioreactor 50 are produced in GMP clean workshop, with high quality modes and high quality polypropylene (PP) material meet USP Class IV standard. It is suitable for small batch parallel experiment, large-scale screening, process optimization of suspension cell expression system and microbial cultivation.

### FEATURES

- ▶ Unique dual-threaded design of the cap ensures firm sealing
- ▶ Enlarged 0.2  $\mu\text{m}$  PTFE + PET double-layer hydrophobic filter membrane support gas exchange, prevent evaporation and keep sterility for cell culturing
- ▶ Clear, uniform and smoothy tube body, with clear scale, easy for observation
- ▶ Conical bottom design; large white marking spot
- ▶ 50 mL with min. scale of 0.5ml, recommend working volume: <35 mL
- ▶ Adapt to a 50mL centrifugal tube adapter for centrifugation
- ▶ Irradiation sterilization, SAL  $10^{-6}$ , DNA / RNAase free, non- pyrogen



Compact, crystal-like tube rack can firmly set upright the cap, meet the requirements of cell culture experiment

### Order Information

Cat. No.	Description	Sterile	Qty/Case
361050	Bioreactor ,50mL	Yes	5/Pk,20Pk/Cs
372000	Bioreactor shelf	NA	1/PK

## Pipette Tips

Luxcell low retention filtered pipette tips are produced in 100,000-level purification workshop which meets GMP standards. It can transfer samples without leaving any residual because of its excellent hydrophobic raw material and unique fine modelling technology. Luxcell pipette tips are designed to provide a reliable fit with single and multi-channel pipettes from most major brands.

### FEATURES

- ▶ Rack packed, with or without filter, available in 6 sizes: 10 $\mu$ L, 10 extended, 200 $\mu$ L, 200 extended, 1000 $\mu$ L and 1000 extended
- ▶ High quality hydrophobic filter to prevent sample aerosol entering into the pipette, thus avoid cross-contamination
- ▶ Super hydrophobic surface of tip wall, get liquid retention far lower than that of ordinary
- ▶ Smooth inner wall minimize the liquid residue thus ensure the accuracy
- ▶ Smooth liquid transfer because of the optimized inner diameter design
- ▶ Clear tip made with purely virgin raw material. And with scale on 200ul tip, convenient to observe the liquid level
- ▶ Racked tips in high alignment, ensure the uniformity and accuracy even using multi-channel pipettes, RNase-/DNase-free



### Order Information

Cat.No.	Description	Volume	Qty/Case
155010	Low Retention, Non-filtered	10 $\mu$ L	96 / box, 10 boxes / bag, 5 bags / case
175010	Low Retention, Filtered		
155020	Low Retention, Non-filtered	10 $\mu$ L Extended Length	96 / box, 10 boxes / bag, 5 bags / case
175020	Low Retention, Filtered		
155200	Low Retention, Non-filtered	200 $\mu$ L	96 / box, 10 boxes / bag, 5 bags / case
175200	Low Retention, Filtered		
155300	Low Retention, Non-filtered	200 $\mu$ L Extended Length	96 / box, 10 boxes / bag, 5 bags / case
175300	Low Retention, Filtered		
155210	Low Retention, Non-filtered	1000 $\mu$ L	96 / box, 10 boxes / bag, 5 bags / case
175210	Low Retention, Filtered		
155213	Low Retention, Non-filtered	1000 $\mu$ L Extended Length	96 / box, 10 boxes / bag, 5 bags / case
175213	Low Retention, Filtered		

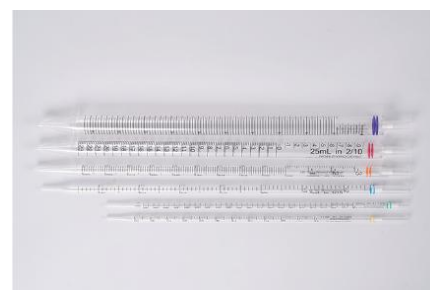
## Serological Pipets

LuxCell serological pipettes are produced with USP-Class VI grade polystyrene raw materials in GMP 100,000 clean workshop, and the production is in-compliance with ISO 9000 and ISO13485.

Widely used in cell culture, bacteriology, clinical research and other fields, LuxCell serological pipets can accurately measure or transfer a certain volume of liquid, and they are compatible with most large-capacity pipettes on the market.

### FEATURES

- ▶ 7 volume available: 1mL, 2mL, 5mL, 10mL, 25mL, 50mL, 100mL
- ▶ Smooth pipette body and tip, reduce liquid adhesion, improve accuracy
- ▶ Color-coded ring at the rear make volume reading easier
- ▶ Bidirectional graduation ideally provide choice of ascending and descending scale
- ▶ Equipped with filter inserts passed strict integrity testing to prevent contamination
- ▶ Negative graduation allow additional working volume
- ▶ Individually wrapped with paper and plastic
- ▶ Non-pyrogenic, RNase-/DNase-free
- ▶ Irradiation sterilization to SAL 10<sup>-6</sup>



### Order Information

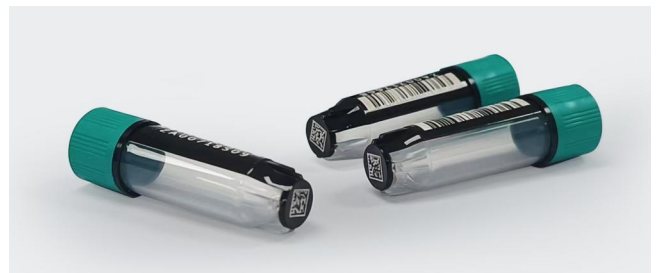
Serological pipets, Individually packed; Sterile

Cat. No.	Volume(mL)	Length (mm)	Scale	Sterile	Qty./Pk	Pk./Cs
404001	1	280	1/100mL	Yes	50	10
404002	2	280	1/100mL	Yes	50	10
404005	5	340	1/10mL	Yes	50	10
404010	10	339	1/10mL	Yes	50	10
404025	25	309	2/10mL	Yes	25	8
404050	50	344	1/2mL	Yes	25	4
404100	100	350	1/2mL	Yes	20	5

## Tri-coded 2D Cryotube

### FEATURES

- ▶ Manufactured in clean workshop complying with GMP 8 and certified with ISO 9001 and 13485
- ▶ Laser-etched code on the tube bottom and side, easy to be read, scratch resistant
- ▶ Strict quality control, Tri-Coded system, to provide readability and uniqueness, and unequalled sample audit traceability
- ▶ Super-toughened materials with standing temperatures from -196°C to 120°C for cryogenic storage
- ▶ RNase / DNase and pyrogen free, can be sterilized using gamma irradiation
- ▶ Same material for cap and tube, effectively prevent the uneven expansion during freeze-thaw cycles
- ▶ Direct code-reading with the tubes on rack, The rack is SBS format
- ▶ External thread tubes provide bigger working volume Multi-color caps for choice, to facilitate research for different samples
- ▶ Non-silicone seal with unique thread to prevent over-tightening



### SPECIFICATION

External Thread Tubes	0.5mL	0.75mL	1mL	2.0mL
Max Working Volume (ml)	0.58	0.77	1.15	2
Tube Height (mm)	26.82	31.2	46.59	38.43
Tube Height with Cap (mm)	29.58	34.1	49.34	43.12
Inner Diameter (mm)	6.5	6.5	6.5	9.6
Outer Diameter with Cap (mm)	8.7	8.7	8.7	12.8
Center to Center (mm)	9	9	9	13.5
Minimum Temperature (°C)	-196	-196	-196	-196
Format	96-format	96-format	96-format	48-format
2D-code on base	√	√	√	√
1D Linear Barcode (and Human Readable Number) on side	√	√	√	√
1D Linear Barcode (and Human Readable Number) on rack	√	√	√	√
Full box length, width, height (mm)	128*85*36	/	128*85*54	128*85*48

## Order Information

Cat. No.	Description	Package
900050	0.5mL Tri-coded,Bulk	960/bag, 1bag/case
901050	0.5mL Tri-coded,Bulk - Sterilization	960/bag, 1bag/case
902050	0.5mL Tri-coded,Rack	96/rack, 10racks/case
905050	0.5mL Tri-coded,Rack - Sterilization	96/rack, 10racks/case
910050	0.5mL Editable,Bulk	960/bag, 1bag/case
911050	0.5mL Editable,Bulk - Sterilization	960/bag, 1bag/case
912050	0.5mL Editable,Rack	96/rack, 10racks/case
915050	0.5mL Editable,Rack - Sterilization	96/rack, 10racks/case
920050	0.5mL, bottom 2D coded , Editable on side,Bulk	960/bag, 1bag/case
921050	0.5mL, bottom 2D coded , Editable on side,Bulk- Sterilization	960/bag, 1bag/case
922050	0.5mL, bottom 2D coded, Editable on side,Rack	96/rack, 10racks/case
925050	0.5mL, bottom 2D coded, Editable on side,Rack- Sterilization	96/rack, 10racks/case
900075	0.75mL Tri-coded,Bulk	960/bag, 1bag/case
901075	0.75mL Tri-coded,Bulk - Sterilization	960/bag, 1bag/case
910075	0.75mL Editable,Bulk	960/bag, 1bag/case
911075	0.75mL Editable,Bulk - Sterilization	960/bag, 1bag/case
920075	0.75mL, bottom 2D coded , Editable on side,Bulk	960/bag, 1bag/case
921075	0.75mL, bottom 2D coded , Editable on side,Bulk- Sterilization	960/bag, 1bag/case
930090	0.9mL 2D Code bottom,Bulk	960/bag, 1bag/case
931090	0.9mL 2D Code bottom,Bulk-Sterilized	960/bag, 1bag/case
932090	0.9mL 2D Code bottom,Rack	96/rack, 10racks/case
935090	0.9mL 2D Code bottom,Rack- Sterilized	96/rack, 10racks/case
940090	0.9mL Sample tube,Non-coded,Bulk	960/bag, 1bag/case
941090	0.9mL Sample tube,Non-coded,Bulk-Sterilized	960/bag, 1bag/case
942090	0.9mL Sample tube,Non-coded,Rack	96/rack, 10racks/case
945090	0.9mL Sample tube,Non-coded,Rack-Sterilized	96/rack, 10racks/case
900100	1.0mL Tri-coded,Bulk	960/bag, 1bag/case
901100	1.0mL Tri-coded,Bulk - Sterilization	960/bag, 1bag/case
902100	1.0mL Tri-coded,Rack	96/rack, 10racks/case
905100	1.0mL Tri-coded,Rack - Sterilization	96/rack, 10racks/case
910100	1.0mL Editable,Bulk	960/bag, 1bag/case
911100	1.0mL Editable,Bulk - Sterilization	960/bag, 1bag/case
912100	1.0mL Editable,Rack	96/rack, 10racks/case
915100	1.0mL Editable,Rack - Sterilization	96/rack, 10racks/case
920100	1mL, bottom 2D coded , Editable on side,Bulk	960/bag, 1bag/case
921100	1mL, bottom 2D coded , Editable on side,Bulk- Sterilization	960/bag, 1bag/case
922100	1mL, bottom 2D coded, Editable on side,Rack	96/rack, 10racks/case
925100	1mL, bottom 2D coded, Editable on side,Rack- Sterilization	96/rack, 10racks/case
900200	2mL Tri-coded,Bulk	480/bag, 1bag/case
901200	2mL Tri-coded,Bulk - Sterilization	480/bag, 1bag/case
902200	2mL Tri-coded,Rack	48/rack, 10racks/case
905200	2mL Tri-coded,Rack - Sterilization	48/rack, 10racks/case
910200	2mL Editable,Bulk	480/bag, 1bag/case
911200	2mL Editable,Bulk - Sterilization	480/bag, 1bag/case
912200	2mL Editable,Rack	48/rack, 10racks/case
915200	2mL Editable,Rack - Sterilization	48/rack, 10racks/case
920200	2mL, bottom 2D coded , Editable on side,Bulk	480/bag, 1bag/case
921200	2mL, bottom 2D coded , Editable on side,Bulk- Sterilization	480/bag, 1bag/case
922200	2mL, bottom 2D coded, Editable on side,Rack	48/rack, 10racks/case
925200	2mL, bottom 2D coded, Editable on side,Rack- Sterilization	48/rack, 10racks/case

\*Markable Tri-Coded Tubes: codes on side could be customized by user, including 1D Linear Barcode/Human Readable Number/2D-code

## Square PET/PETG Media Bottle

LuxCell square PET or PETG bottle with closure provide excellent gas barrier properties for storage and shipping of liquid media, buffers, serum and pH-sensitive liquids. These light-weight bottles are shatter-resistant, sterile and coming in a space-saving square design. They are also good for storage and sampling active pharmaceutical ingredients and bulk intermediates.

### FEATURES

- ▶ PET or PETG with HDPE closure, optimal choices for different application needs
- ▶ One-time molding process provides better gas barrier properties and polished body
- ▶ Light weighted, shatter-resistant, chemical resistant, and low temperature tolerance to -70
- ▶ Transparency and reduced permeability to CO<sub>2</sub> and O<sub>2</sub>
- ▶ Space-saving ergonomic square design also convenient for grasp
- ▶ Leak proof by special design in the lid and bottle
- ▶ Gamma irradiation to 10<sup>-6</sup> SAL, DNase/RNase free, no pyrogen, no cytotoxicity



### Order Information

#### ■ PET

Cat. No.	Description	Volume (mL)	Neck Diameter (mm)	Height (W/O cap)(mm)	Height (W cap)(mm)	Qty/Case
241125	125ml Sterilized PET Bottle	125	35.4	104	108	24/Pk,4Pk/Cs
241250	250ml Sterilized PET Bottle	250	35.4	140	144	30/Pk,2Pk/Cs
241500	500ml Sterilized PET Bottle	500	35.4	172.5	176.5	24/Pk,2Pk/Cs
241210	1000ml Sterilized PET Bottle	1000	35.4	213	217	12/Pk,2Pk/Cs

#### ■ PETG

Cat. No.	Description	Volume (mL)	Neck Diameter (mm)	Height (W/O cap)(mm)	Height (W cap)(mm)	Qty/Case
F261060	60mL Sterilized PETG Bottle	60	21.5	80.4	82.2	24/Pk,4Pk/Cs
F261125	125mL Sterilized PETG Bottle	125	35.4	104	108	24/Pk,4Pk/Cs
F261250	250mL Sterilized PETG Bottle	250	35.4	140	144	30/Pk,2Pk/Cs
F261500	500mL Sterilized PETG Bottle	500	35.4	172.5	176.5	24/Pk,2Pk/Cs
F261210	1000mL Sterilized PETG Bottle	1000	35.4	213	217	12/Pk,2Pk/Cs

## Polycarbonate (PC) bottle

Luxcell PC bottles are designed for low temperature storage and transfer sensitive solution during pharmaceutical and biologics production processes, for example the developed API or intermediates. Different volumes can be used to amplify during the development process. Luxcell PC bottle which made of high quality PC material is sterilized by irradiation to secure the bio-safety in processing. The leachables and extractables is well reduced because of the high quality raw material.

Luxcell PC bottle can be autoclaved. Square shape makes it easier to be handled. It can be used to store liquids or medium.

### FEATURES

- ▶ Made of durable and transparent PC material which can ensure the integrity of the stored sample
- ▶ Silicone cap ensure no leakage
- ▶ Square shape makes the full use of space in freezer
- ▶ Volume range from 5mL to 20 L
- ▶ Autoclavable / transparent / leak prove / molded scale
- ▶ Safety guaranteed with validation documents
- ▶ Can be used in -80°C to 121°C



**Note:** Remove or completely unscrew the cover before autoclaving. Repeated autoclaving will shorten bottle's life.

### Order Information

Cat. No.	Description	Qty/Case	Cover
821005	5mL PC bottle	25/Pk,500/Cs	With 24.3mm regular cover
821020	20mL PC bottle	25/Pk,500/Cs	
821125	125mL PC bottle	5/Pk,100/Cs	With 48mm regular cover
821250	250mL PC bottle	5/Pk,50/Cs	
821500	500mL PC bottle	2/Pk,50/Cs	
821130	1L PC bottle	3/Pk,30/Cs	
821230	2L PC bottle	1/Pk,20/Cs	With 70mm regular cover
821530	5L PC bottle	1/Pk,6/Cs	
821140	10L PC bottle	1/Pk,3/Cs	
821240	20L PC bottle	1/Pk,3/Cs	



## 96 well Black Microplate

Luxcell 96 well Black Microplates are produced in 100,000-level purification workshop which meets GMP standards. High-quality polypropylene materials meet USP Class VI standards and the productions are in-compliance with ISO 9000 and ISO 13485. 96 well Black Microplates would not be combined with protein or DNA and especially applicable to BLI kinetic and quantitative analysis because of its unique material combination and surface treatment.

### FEATURES

- ▶ Special formulation black raw material, recommended for fluorescence measurements
- ▶ Minimise back-scattered light and background fluorescence
- ▶ High signal-to-noise ratio
- ▶ Unique surface treatment, low adsorption
- ▶ Flat and even plat bottom, suitable for automation
- ▶ Temperature range: -196~121°C
- ▶ Strong chemical resistance
- ▶ G-force tolerance: 4800g
- ▶ Irradiation sterilization to SAL10<sup>-6</sup>
- ▶ Laser coding for tracking records and automation
- ▶ RNase-/DNase-free, non-pyrogenic
- ▶ Independent lot number for quality tracking



### Order Information

Cat. No.	Description	Well bottom	Laser coding	Sterile	Qty/Case
902556	96 well Black PP Plate	Flat	No	No	10/Pk, 10/Cs
902557	96 well Black PP Plate	Flat	Yes	No	10/Pk, 10/Cs
902558	96 well Black PP Plate	Flat	No	Yes	10/Pk, 10/Cs
902559	96 well Black PP Plate	Flat	Yes	Yes	10/Pk, 10/Cs
902560	96 well Black PP Plate	Flat	Yes	Yes	10/Pk, 4/Cs

## Premium Grade Fetal Bovine Serum

Luxcell's premium FBS is designed for cultivating various types of cells that require extremely high serum quality. This type of serum has been screened through hematopoietic stem cell proliferation and colony formation, which can support a variety of cell types that are difficult to be cultivated, including tissue stem cells, freshly isolated tissue cells, immune cells, and cells used for producing recombinant virus.



### Serum source and complete traceability

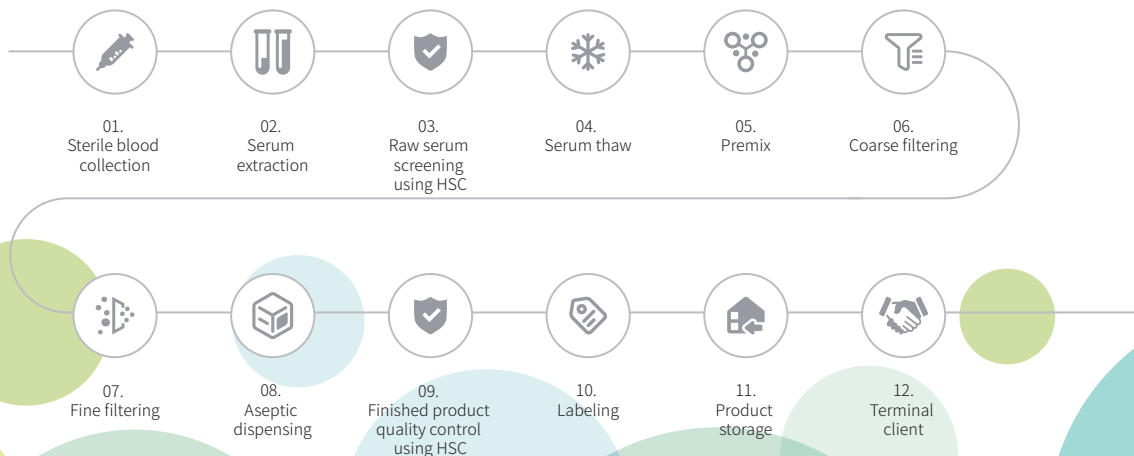
We conduct whole process management, from animal farms to blood collection and processing. The breeding farms and quarantine qualifications of all donor cows for fetal cattle are traceable, ensuring the quality of the serum raw materials. Complete traceability meets cGMP requirements.

### One-time sterile production system

We adopt a one-time sterile production process for our fetal bovine serum production, with a single batch volume of 400-1000L in single-use bags and through 3 sequential 100 nm pore size rated filters. This process helps to diminish the frequency of users changing serum batches, reduce the impact of differences between serum batches, avoid the possibility of crossed contamination, decrease the risk of human error, and avert the need for cleaning and validation of commonly-used stainless steel equipment in the industry, thereby escaping the risk of contamination caused by incomplete cleaning.

### Multiple steps of quality inspections to ensure high serum quality and batch consistency

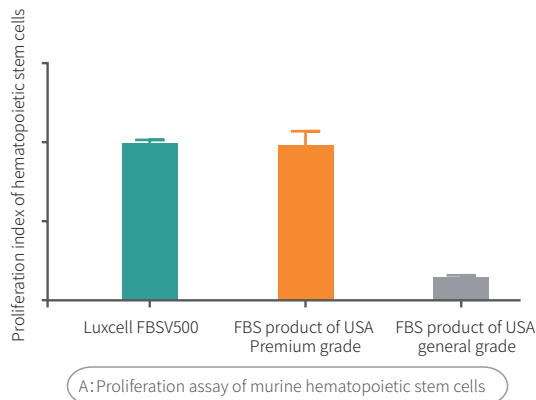
Before production, quality inspection is conducted on the raw materials of single pack and single fetal bovine serum and only those qualified ones can enter production process. The finished FBS also needs to pass the quality re-inspection by using hematopoietic stem cells and T lymphocytes. The dual quality inspection can greatly ensure the quality and stability between batches. The serum obtained through hematopoietic stem cell quality inspection can meet the cultivation requirements of the vast majority of other cells.



## Comprehensive biochemical detection to ensure stable serum performance

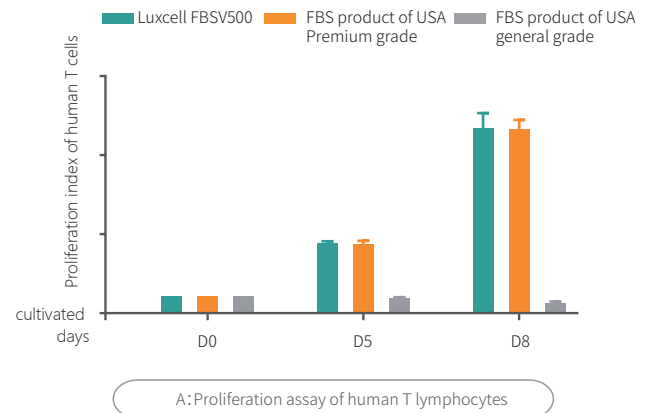
- ✔ Super-low levels of endotoxin (<0.5EU/ml);
- ✔ Negative for all tested pathogens;
- ✔ The biochemical indicators meet the qualification of international standard

### Comparison between Luxcell FBSV500 and other brands of FBS: culture of human mesenchymal stem cells



B: Colony formation of murine hematopoietic stem cells

### Comparison between Luxcell FBSV500 and other brands of FBS: culture of human T cells



B: Colony formation of human T lymphocytes

### Comparison between Luxcell FBSV500 and other brands of FBS (culture of mesenchymal stem cells)



## Order Information

Cat.No.	Description	Volume
FBSV500	Premium grade FBS	500mL
FBSV050	Premium grade FBS	50mL
FBSV050-10	Premium grade FBS	50mL*10
FBSC500	Guaranteed grade FBS	500mL
FBSC050	Guaranteed grade FBS	50mL
FBSC050-10	Guaranteed grade FBS	50mL*10



## LuxCell Biotechnology Jiangsu Co.Ltd

**Address:**

Building 4, No. 236 Chuangyuan Road, Suzhou Industrial Park,  
Suzhou Area, China (Jiangsu) Pilot Free Trade Zone, 505-1

**Tel:**

0512-62956294

**Web:**

[www.luxcellsci.com](http://www.luxcellsci.com)

**Production address:**

01 / F, Block 5, Taicang Xingyao port, No. 101, Zhaoxi Road, Shaxi Town, Taicang City  
No.688, Fenghua Road, Nanhu District, Jiaxing City



关注公众号