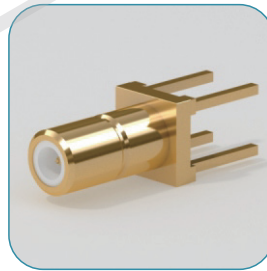


SSMB 系列射频同轴连接器

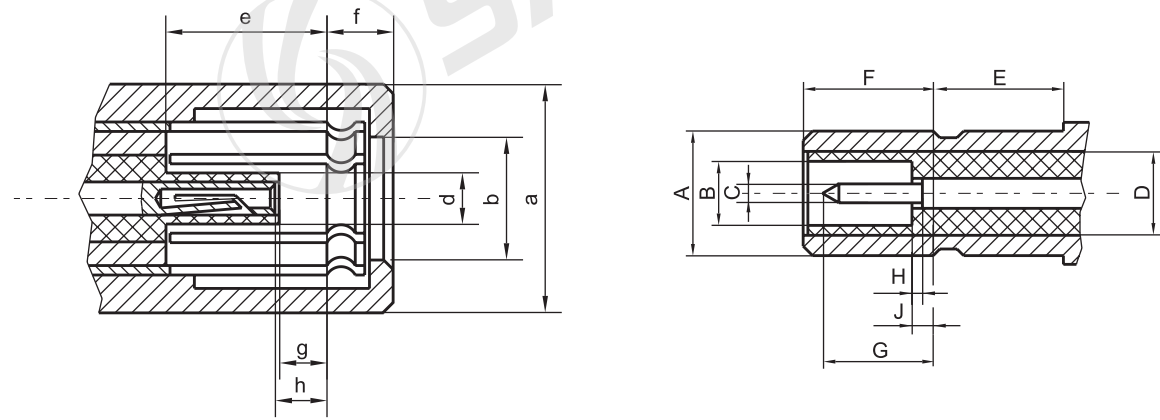
该系列产品是按照IEC169—19研制生产的一种微型推入式射频同轴连接器它具有体积小、重量轻、使用方便、抗振性好等特点，并能与国际上同类产品互换，适用于微型无线电设备、仪器中连接射频同轴电缆。



主要技术特性

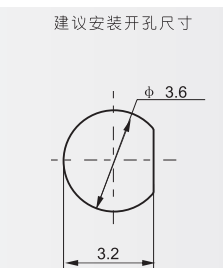
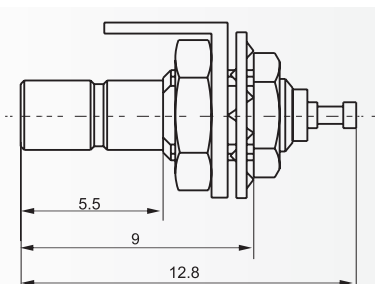
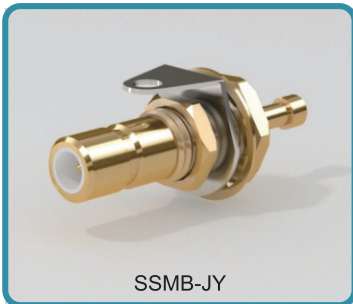
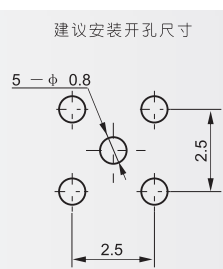
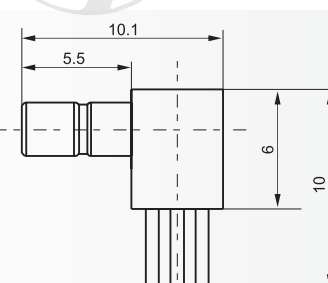
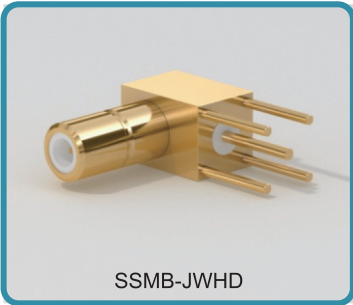
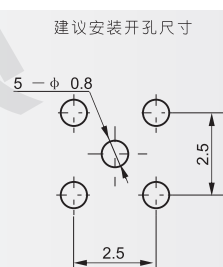
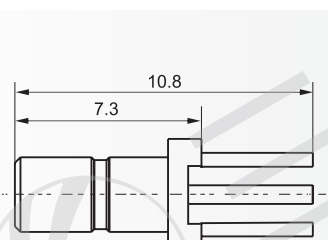
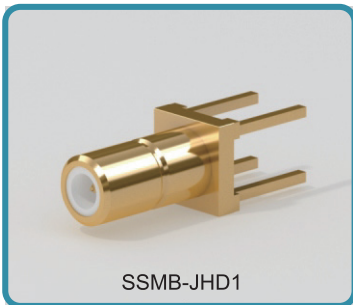
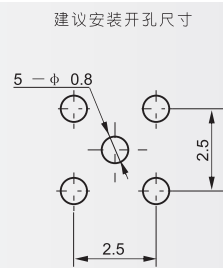
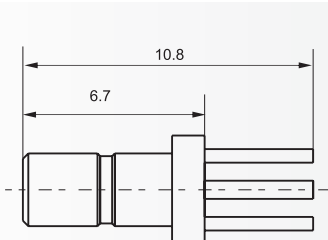
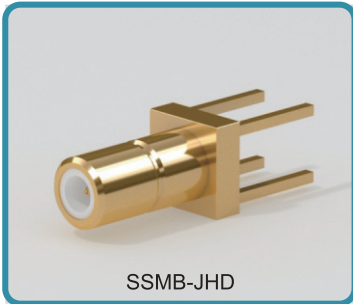
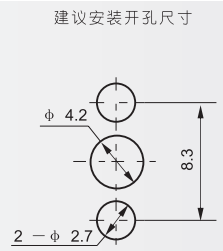
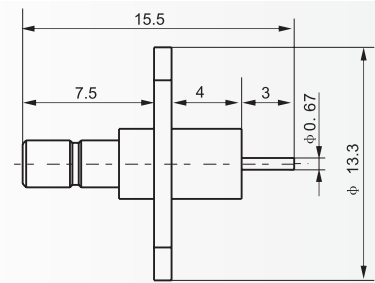
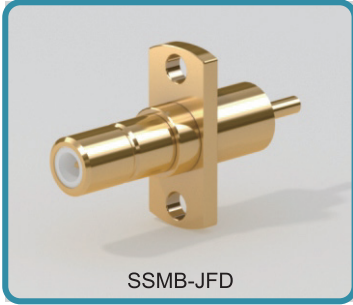
温度范围 Temperature range		-55 ~ +155℃	绝缘电阻 Insulation resistance		≥1000MΩ
特性阻抗 Characteristic Impedance		50Ω	介质耐压 Dielectric Withstanding voltage		500V
电压驻波比 VSWR	直式 Straight	≤1.22 (0~1GHz)	接触电阻 Contact resistance	中心导体 Center conductor	≤0.005Ω
		≤1.35 (0~3GHz)		外导体 Outer conductor	≤0.0025Ω
	弯式 Right angle	≤1.50 (0~1GHz)	频率范围 Frequency range		
		≤1.63 (0~3GHz)	寿命 Durability		500 Cycles

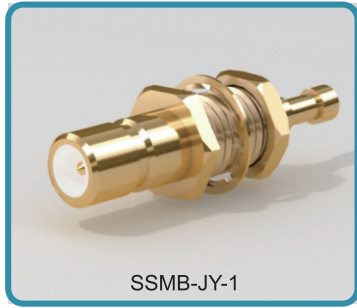
头部配合尺寸



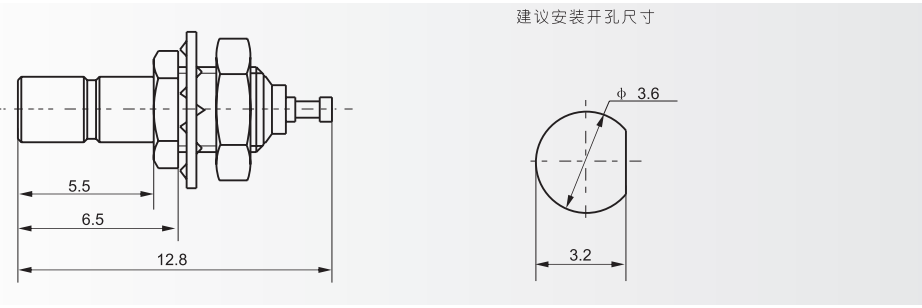
PLUG(mm)		
Symbol	Min	Max
a	φ 4.50	--
b	φ 2.74	--
d	--	1.35
e	2.74	--
f	--	2.26
g	0.53	--
h	0.53	0.89

JACK(mm)		
Symbol	最小值	最大值
A	--	φ 2.69
B	φ 1.37	--
C	φ 0.35	φ 0.38
D	φ 2.10	φ 2.14
E	2.30	--
F	--	2.77
G	--	2.44
H	0.00	0.13
J	--	0.56

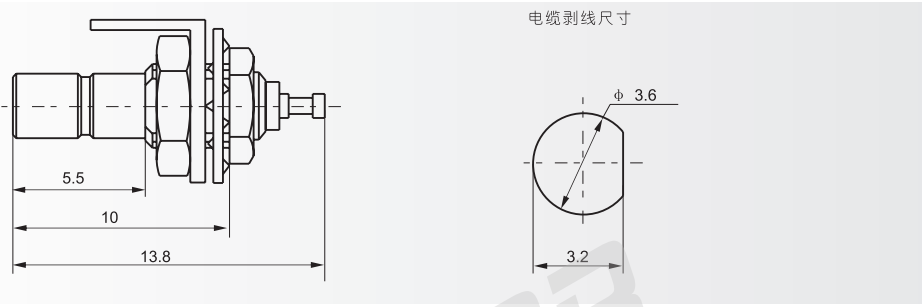




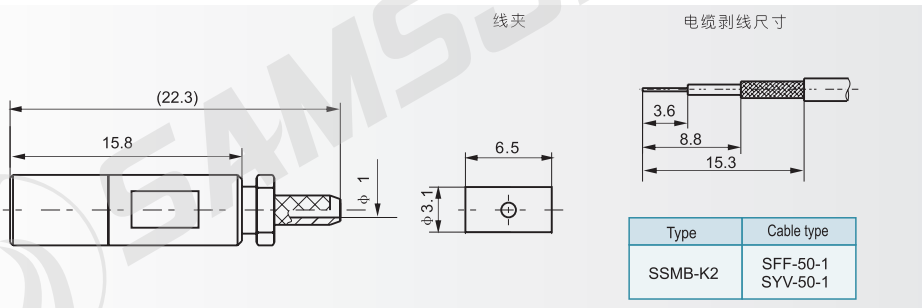
SSMB-JY-1



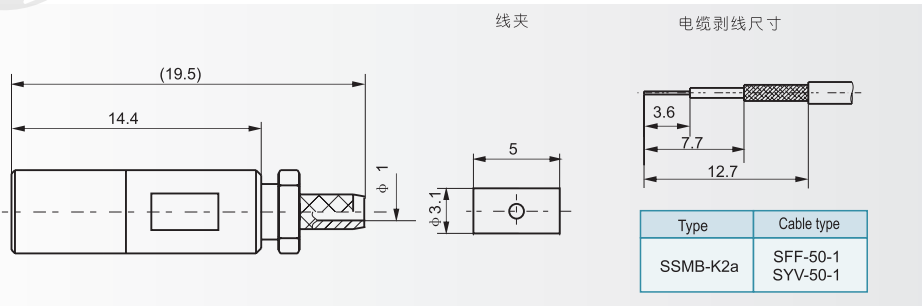
SSMB-JYa



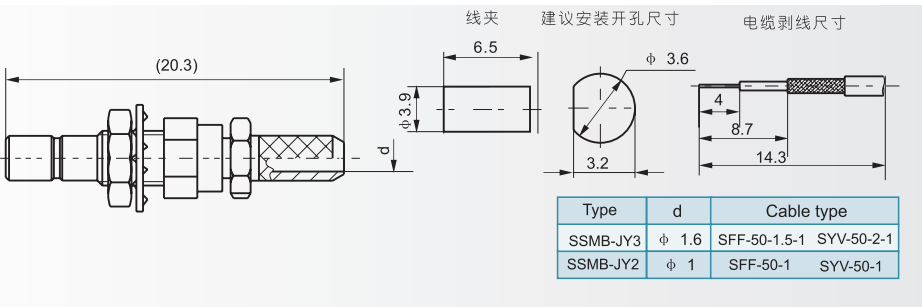
SSMB-K2



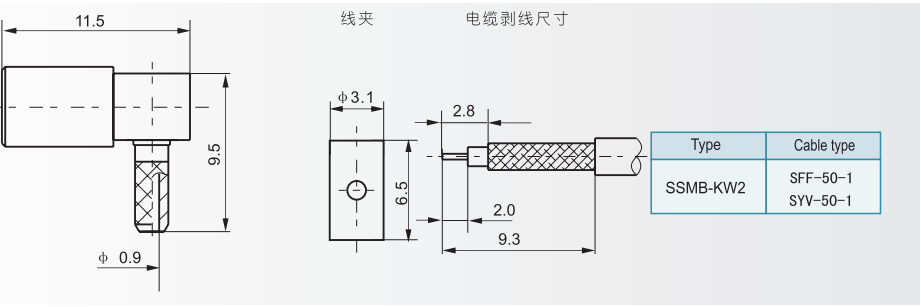
SSMB-K2a



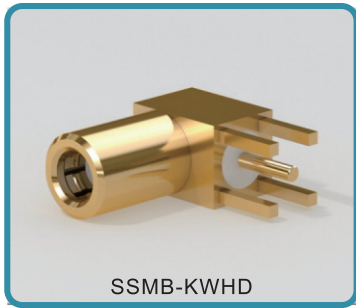
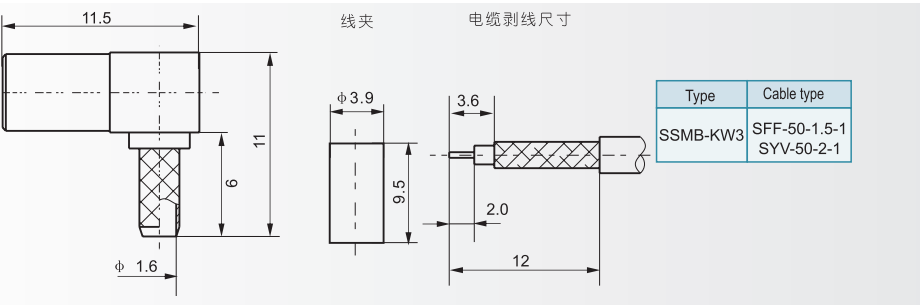
SSMB-JY3 等



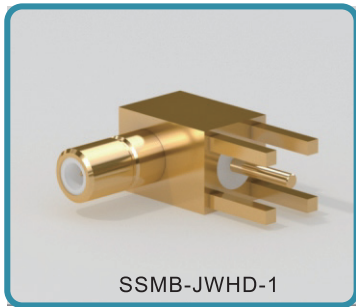
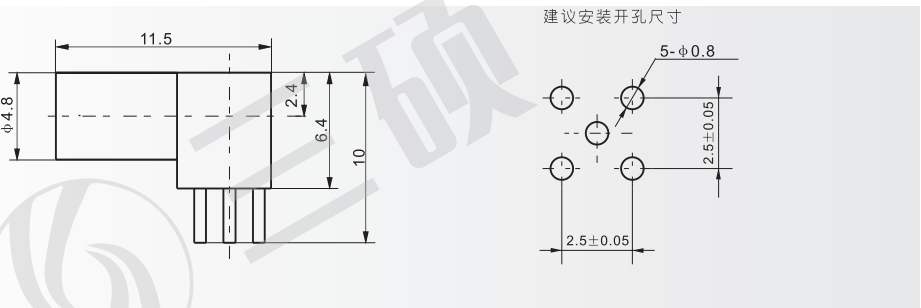
SSMB-KW2



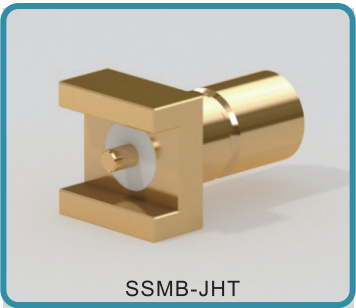
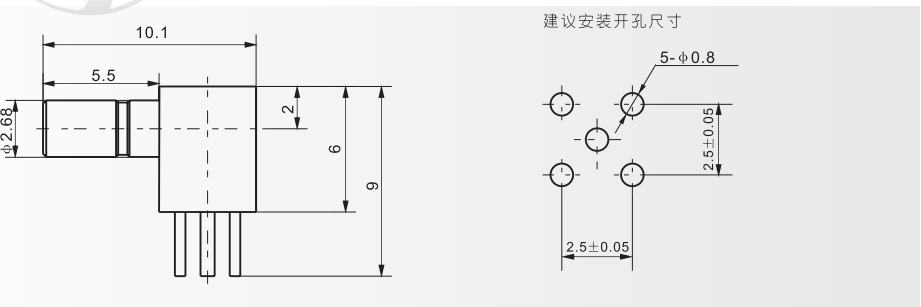
SSMB-KW3



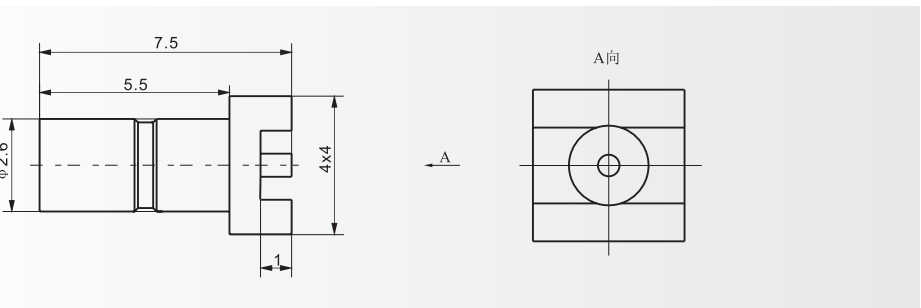
SSMB-KWHD



SSMB-JWHD-1

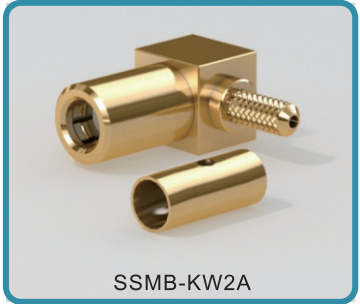
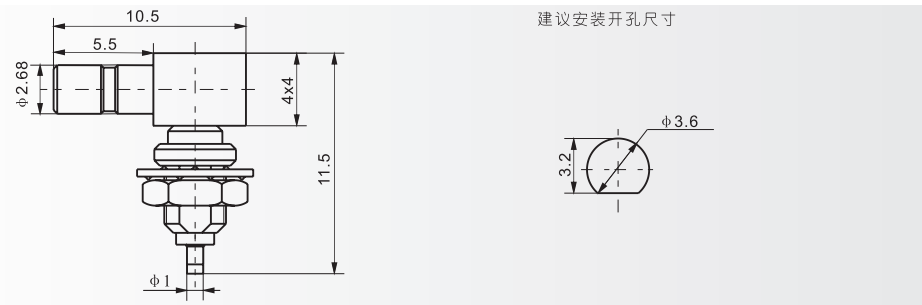


SSMB-JHT

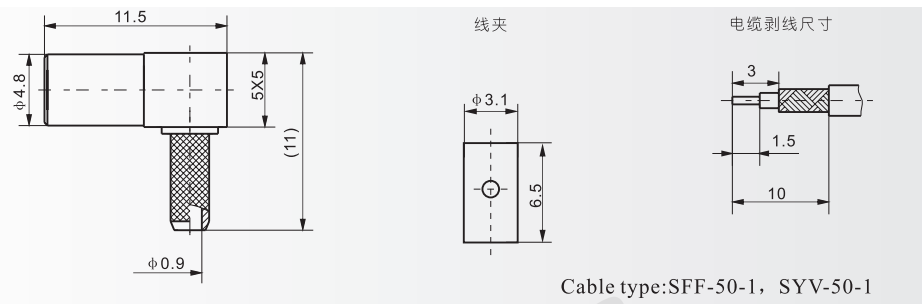




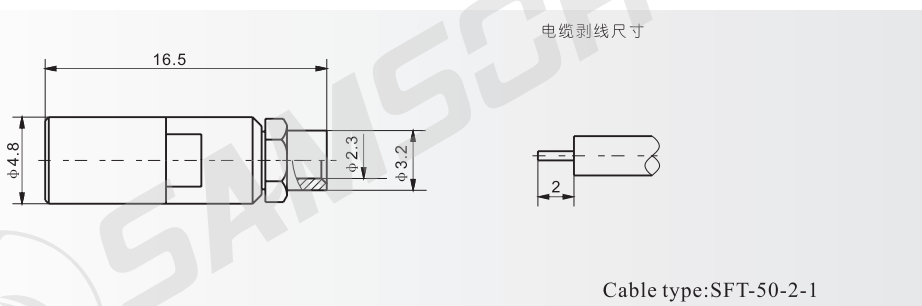
SSMB-JWY



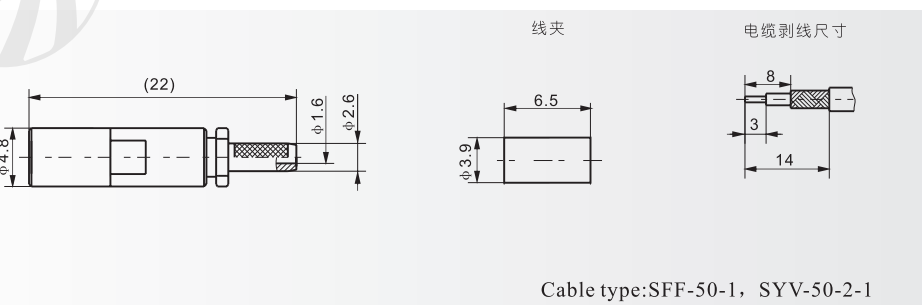
SSMB-KW2A



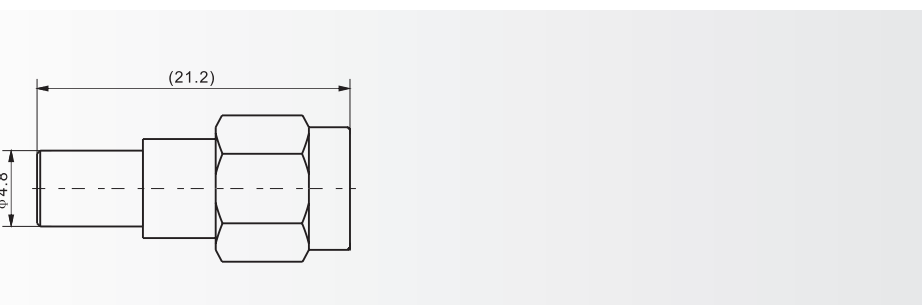
SSMB-KB2



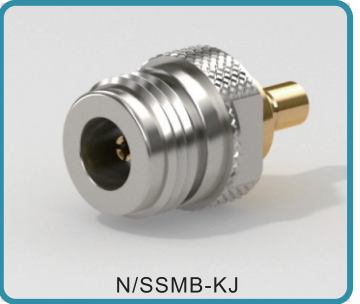
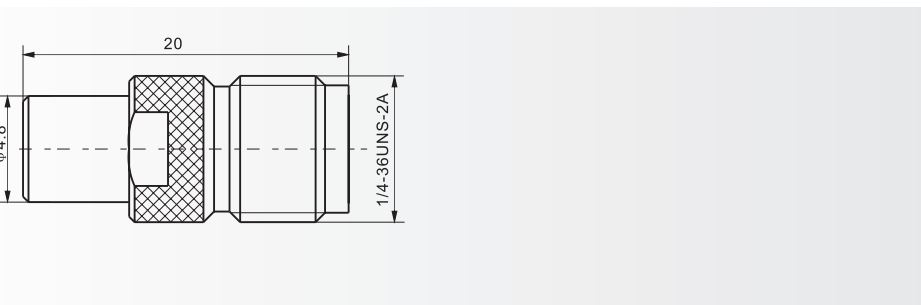
SSMB-K3



SMA/SSMB-50JK



SMA/SSMB-50KK



N/SSMB-KJ

