

SBT

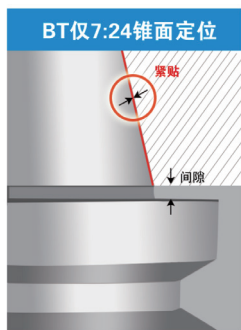
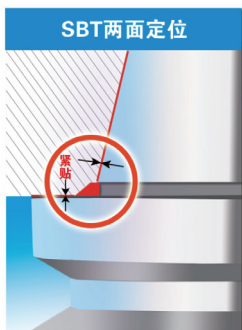
JIS B 6339

PRECISION TOOL HOLDERS SYSTEM



SBT数控刀柄系列

CNC TOOL SYSTEMS



- 通过确立完善的量规系统，实现了锥面、端面同时两面定位的系统。



SBT 刀柄的各种优点：

- 提高加工表面光洁度和加工尺寸精度
- 提高 ATC 自动换刀的重重复精度
- 延长刀具寿命
- 高速旋转时 Z 轴方向尺寸稳定
- 高刚性 适合重切削
- 提高镗孔加工的圆度

拉入量对于端面紧贴很重要！！

刀柄在未被拉紧时，与主轴端面有微小间隙。通过拉紧装置拉入，主轴因弹性形变产生扩张，实现端面完全贴紧。因此，确保端面紧贴的拉入量非常重要。

《参考值》

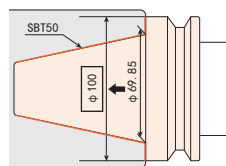
主轴规格	拉紧力	拉入量
#40	800Kg	20μm
#50	2000Kg	20μm

上表中的数值仅供参考，拉入量因主轴形状及紧固机构而异。（本公司加工中心的实测值）

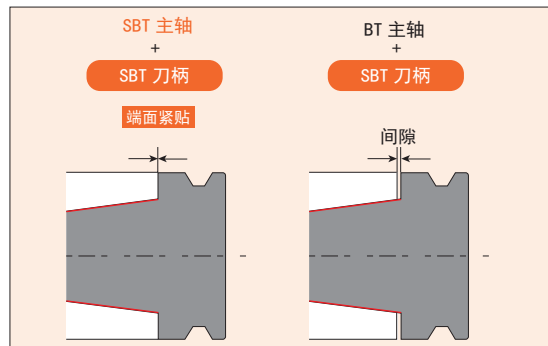
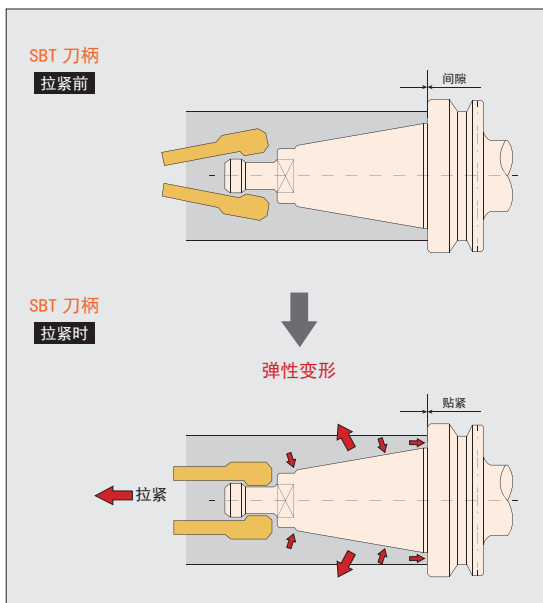
增加刀柄的基准直径，刚性增强。

根据力学原理，基准直径越大刚性越强，普通的 BT 刀柄的基准直径是锥柄的大端直径、而端面紧贴的 SBT 系统的基准直径是法兰外径。因此，SBT 刀柄刚性有了显著增强。

BT30 锥柄	φ31.75	φ46
BT40 锥柄	φ44.45	φ63
BT50 锥柄	φ69.85	φ100



“SBT 主轴”与“SBT 刀柄”的最强组合

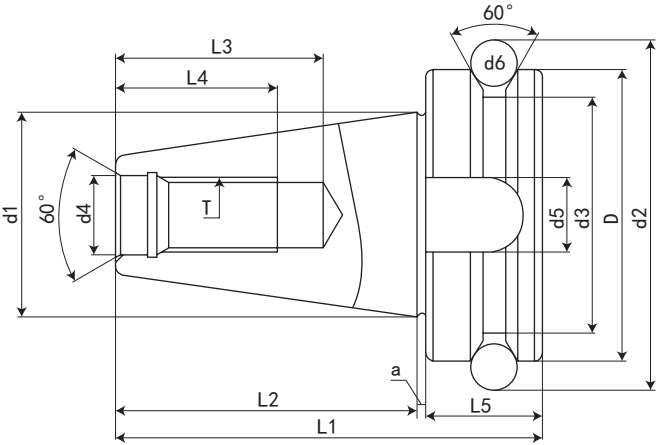


刀柄除端面位置尺寸外，其他尺寸均以 MAS-BT 规格为标准。

SBT 主轴系统通过组合 SBT 刀柄与 SBT 主轴，可最大限度地发挥两面定位的性能。SBT 刀柄也可使用原有标准规格的 BT 主轴，但这种情况下没有两面定位功能。为了发挥两面定位的优异性能，请在 SBT 主轴中使用 SBT 刀柄。另外，使用 SBT 刀柄以外的两面定位刀柄时，可能会损伤机床主轴，敬请注意。

建议在 SBT 主轴中使用 SBT 刀柄。

请勿在 SBT 主轴中混用 SBT 刀柄和 BT 刀柄。



规格 / 型号 Model	D h8	d1	d2	d3	d4 H8	d5 H12	d6	L1	L2 ±0.2	L3 Min	L4 Min	L5	a 0 -0.005	T 6H
SBT30	46	31.75	56.14	38	12.5	16.1	8	70.4	48.4	34	24	21	1	M12*1.75P
SBT40	63	44.45	75.679	53	17	16.1	10	92.4	65.4	70	30	26	1	M16*2.0P
SBT50	100	69.85	119.02	83	25	25.7	15	139.8	101.8	90	45	36.5	1.5	M24*3.0P

特点:

- ◎锥度精度: <AT3
- ◎基本材质: JIS-SCM415 or JIS SNCM220 or JIS SNCM439
- ◎硬度: HRC56° ~58° 渗碳深度 >0.8mm
- ◎真圆度: <0.8um
- ◎表面粗糙度: Ra<0.5um
- ◎刀柄本体可另外指定: 通过 V 型法兰端出水规格 (DIN-69871-AD+B)
- ◎ ER、EOC、FMA、FMB、MLC、MLD、MLT、SCK、SFC、SKS、SLN (DIN、FID、JIS)、SOM、TG 皆符合: 通过刀柄本体中心出水规格 (DIN-69871-AD)
- ◎刀柄有预设标准平衡 G6.3, 可另外指定精密动平衡 G2.5
- ◎本体规范: BIG-PLUS

Features:

- ◎ Taper tolerance<AT3
- ◎ Basic Material:JIS-SCM415
- ◎ Hardness>HRC 56° Carbon depth>0.8mm
- ◎ Roundness<0.8um
- ◎ Surface roughness:Ra<0.5um
- ◎ If it is suitable for center coolant standard(DIN-69871-AD or B),it can be ordered
- ◎ ER、EOC、FMA、FMB、MLC、MLD、MLT、SCK、SFC、SKS、SLN(DIN、FID、JIS)、SOM、TG Are in compliance with:Water through the chuck body center type(DIN-69871-AD)
- ◎ The shank has pre-balance at G6.3,and can provide percision balance at G2.5,made by request
- ◎ Shank body standard:BIG-PLUS

SBT30-PHC 液压刀柄

SBT30-PHC HYDRAULIC TOOL HOLDER

FIG. 1

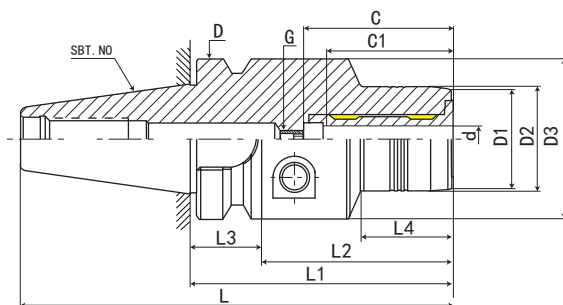
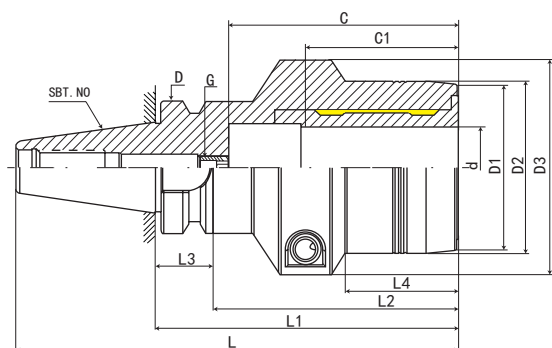


FIG. 2



型号 Model	L	L1	L2	L3	L4	D	D1	D2	D3	d	最大插入深度 C Max. insertion depth	最少插入深度 C1 Min insertion depth	G	FIG	重量 KGS
SBT30-PHC03-60	108.4	60	38	22	28	46	20	23	45	3	*	18	*	1	0.75
SBT30-PHC3.175-60	108.4	60	38	22	28	46	20	23	45	3.175	*	18	*	1	0.75
SBT30-PHC04-60	108.4	60	38	22	28	46	21	24	45	4	*	24	*	1	0.75
SBT30-PHC05-60	108.4	60	38	22	28	46	22	25	45	5	*	26	*	1	0.75
SBT30-PHC06-70	118.4	70	48	22	28	46	23	26	45	6	37	27	M5*0.8P	1	0.8
SBT30-PHC08-70	118.4	70	48	22	28	46	25	28	45	8	37	27	M6*1.0P	1	0.85
SBT30-PHC10-75	123.4	75	53	22	36	46	27	30	45	10	41	31	M8*1.0P	1	0.85
SBT30-PHC12-75	123.4	75	53	22	36	46	29	32	45	12	46	36	M10*1.0P	1	0.85
SBT30-PHC14-85	133.4	85	63	22	44	46	31	34	45	14	46	36	M10*1.0P	1	0.95
SBT30-PHC16-90	138.4	90	68	22	48	46	35	38	45	16	52	39	M12*1.0P	1	1.05
SBT30-PHC18-90	138.4	90	68	22	48	46	37	40	45	18	52	39	M12*1.0P	1	1.1
SBT30-PHC20-90	138.4	90	68	22	48	46	39	42	45	20	52	41	M16*1.0P	1	1.15
SBT30-PHC25-105	153.4	105	83	22	44	46	52	55	63	25	80	47	M16*1.0P	2	1.65
SBT30-PHC32-105	153.4	105	83	22	39	46	57	60	68	32	80	51	M16*1.0P	2	1.8

SBT30 - PHC - 03 - 60

L1 长度 Length (L1)

刀杆直径 Diameter

功能代号 Holder type

锥柄形式 Taper size

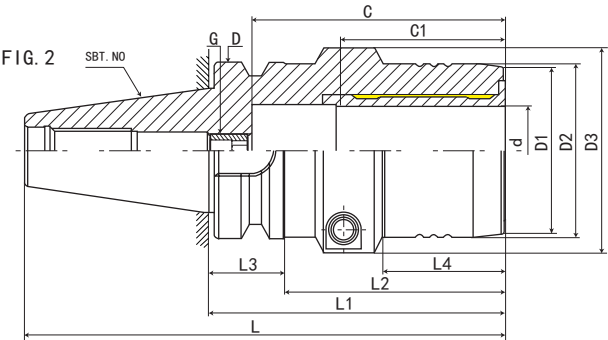
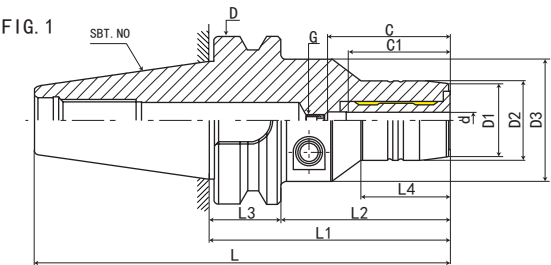


CNC TOOLS
数控
刀柄

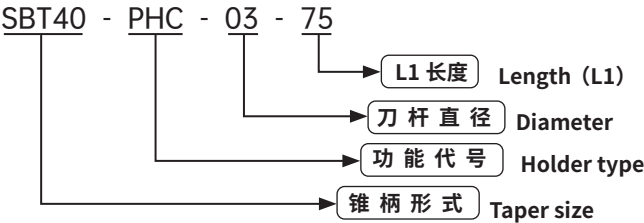
数控刀柄系列 CNC TOOL SYSTEMS

SBT40-PHC 液压刀柄

SBT40-PHC HYDRAULIC TOOL HOLDER

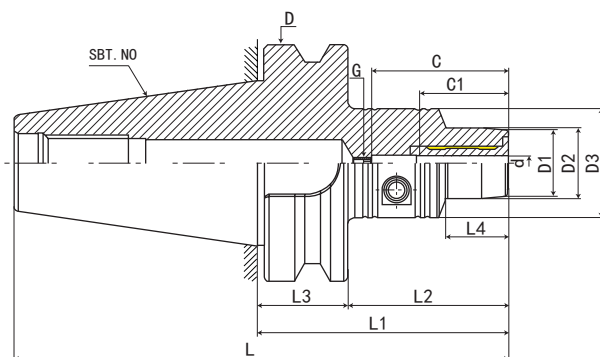


型号 Model	L	L1	L2	L3	L4	D	D1	D2	D3	d	最大插入深度 C Max. insertion depth	最少插入深度 C1 Min insertion depth	G	FIG	重量 KGS
SBT40-PHC03-75	140.4	75	48	27	26	63	20	23	50	3	*	18	*	1	1.28
SBT40-PHC03-90	155.4	90	63	27	29	63	20	23	50	3	*	18	*	1	1.38
SBT40-PHC3.175-75	140.4	75	48	27	26	63	20	23	50	3.175	*	18	*	1	1.28
SBT40-PHC3.175-90	155.4	90	63	27	29	63	20	23	50	3.175	*	18	*	1	1.38
SBT40-PHC04-75	140.4	75	48	27	26	63	21	24	50	4	*	24	*	1	1.28
SBT40-PHC04-90	155.4	90	63	27	29	63	21	24	50	4	*	24	*	1	1.38
SBT40-PHC05-75	140.4	75	48	27	26	63	22	25	50	5	*	26	*	1	1.3
SBT40-PHC05-90	155.4	90	63	27	29	63	22	25	50	5	*	26	*	1	1.4
SBT40-PHC06-75	140.4	75	48	27	26	63	23	26	50	6	37	27	M5*0.8P	1	1.32
SBT40-PHC06-90	155.4	90	63	27	29	63	23	26	50	6	37	27	M5*0.8P	1	1.41
SBT40-PHC08-75	140.4	75	48	27	26	63	25	28	50	8	37	27	M6*1.0P	1	1.36
SBT40-PHC08-90	155.4	90	63	27	30	63	25	28	50	8	37	27	M6*1.0P	1	1.46
SBT40-PHC10-75	140.4	75	48	27	26	63	27	30	50	10	41	31	M8*1.0P	1	1.43
SBT40-PHC10-90	155.4	90	63	27	35	63	27	30	50	10	41	31	M8*1.0P	1	1.57
SBT40-PHC12-75	140.4	75	48	27	26	63	29	32	50	12	46	36	M10*1.0P	1	1.46
SBT40-PHC12-90	155.4	90	63	27	40	63	29	32	50	12	46	36	M10*1.0P	1	1.62
SBT40-PHC14-75	140.4	75	48	27	26	63	31	34	50	14	46	36	M10*1.0P	1	1.48
SBT40-PHC14-90	155.4	90	63	27	40	63	31	34	50	14	46	36	M10*1.0P	1	1.68
SBT40-PHC16-75	140.4	75	48	27	26	63	35	38	50	16	75	39	M12*1.0P	1	1.51
SBT40-PHC16-90	155.4	90	63	27	45	63	35	38	50	16	75	39	M12*1.0P	1	1.7
SBT40-PHC18-75	140.4	75	48	27	26	63	37	40	50	18	75	39	M12*1.0P	1	1.51
SBT40-PHC18-90	155.4	90	63	27	46	63	37	40	50	18	75	39	M12*1.0P	1	1.7
SBT40-PHC20-75	140.4	75	48	27	26	63	39	42	50	20	80	41	M16*1.0P	1	1.52
SBT40-PHC20-90	155.4	90	63	27	47	63	39	42	50	20	80	41	M16*1.0P	1	1.75
SBT40-PHC25-105	170.4	105	78	27	50	63	52	55	63	25	80	47	M16*1.0P	1	2.05
SBT40-PHC32-105	170.4	105	78	27	48	63	60	63	73	32	90	51	M16*1.0P	2	2.34
SBT40-PHC40-120	185.4	120	93	27		63				40	90		M16*1.0P	2	3
SBT40-PHC42-120	185.4	120	93	27		63				42	90		M16*1.0P	2	3



SBT50-PHC 液压刀柄

SBT50-PHC HYDRAULIC TOOL HOLDER



型号 Model	L	L1	L2	L3	L4	D	D1	D2	D3	d	最大插入深度 C Max. insertion depth	最少插入深度 C1 Min insertion depth	G	重量 KGS
SBT50-PHC05-90	191.8	90	52	38	32	100	22	25	49.5	5	*	26	*	4.2
SBT50-PHC05-120	221.8	120	82	38	44	100	22	25	49.5	5	*	26	*	4.5
SBT50-PHC06-90	191.8	90	52	38	32	100	23	26	49.5	6	37	27	M5*0.8P	4.2
SBT50-PHC06-120	221.8	120	82	38	44	100	23	26	49.5	6	37	27	M5*0.8P	4.5
SBT50-PHC08-90	191.8	90	52	38	32	100	25	28	49.5	8	37	27	M6*1.0P	4.2
SBT50-PHC08-120	221.8	120	82	38	44	100	25	28	49.5	8	37	27	M6*1.0P	4.5
SBT50-PHC10-90	191.8	90	52	38	32	100	27	30	49.5	10	41	31	M8*1.0P	4.2
SBT50-PHC10-120	221.8	120	82	38	44	100	27	30	49.5	10	41	31	M8*1.0P	4.5
SBT50-PHC12-90	191.8	90	52	38	32	100	29	32	49.5	12	46	36	M10*1.0P	4.3
SBT50-PHC12-120	221.8	120	82	38	44	100	29	32	49.5	12	46	36	M10*1.0P	4.5
SBT50-PHC14-90	191.8	90	52	38	32	100	31	34	49.5	14	46	36	M10*1.0P	4.3
SBT50-PHC14-120	221.8	120	82	38	44	100	31	34	49.5	14	46	36	M10*1.0P	4.6
SBT50-PHC16-90	191.8	90	52	38	32	100	35	38	49.5	16	75	39	M12*1.0P	4.3
SBT50-PHC16-120	221.8	120	82	38	48	100	35	38	49.5	16	75	39	M12*1.0P	4.6
SBT50-PHC18-90	191.8	90	52	38	32	100	37	40	49.5	18	75	39	M12*1.0P	4.4
SBT50-PHC18-120	221.8	120	82	38	48	100	37	40	49.5	18	75	39	M12*1.0P	4.6
SBT50-PHC20-90	191.8	90	52	38	32	100	39	42	49.5	20	75	41	M16*1.0P	4.4
SBT50-PHC20-120	221.8	120	82	38	48	100	39	42	49.5	20	75	41	M16*1.0P	4.7
SBT50-PHC25-120	221.8	120	82	38	48	100	53	57	63	25	80	47	M16*1.0P	4.9
SBT50-PHC32-120	221.8	120	82	38	48	100	58	62	70	32	90	51	M16*1.0P	5.2
SBT50-PHC40-120	221.8	120	82	38		100				40	90	61	M16*1.0P	6
SBT50-PHC42-120	221.8	120	82	38		100				42	90	61	M16*1.0P	6
SBT50-PHC50-120	221.8	120	82	38		100				50	90	61	M16*1.0P	7

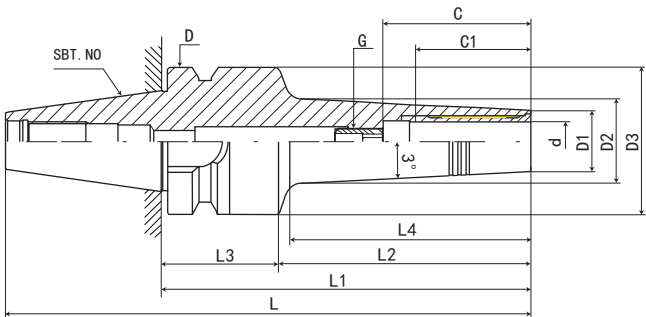
SBT50 - PHC - 05 - 90

- SBT50 - 锥柄形式 Taper size
- PHC - 功能代号 Holder type
- 05 - 刀杆直径 Diameter
- 90 - L1 长度 Length (L1)

数控刀柄系列CNC TOOL SYSTEMS

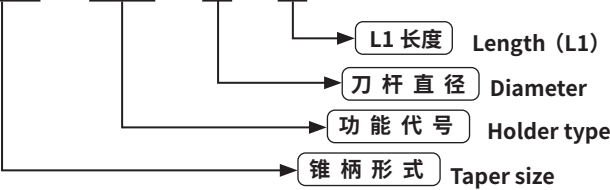
SBT30-SPHC 液压刀柄

SBT30-SPHC HYDRAULIC TOOL HOLDER



型号 Model	L	L1	L2	L3	L4	D	D1	D2	D3	d	最大插入深度 C Max.insertiondepth	最少插入深度 C1 Mininsertiondepth	G	重量 KGS
SBT30-SPHC03-85	133.4	85	63	22	42	46	11		45	3	*	18	*	1.1
SBT30-SPHC04-85	133.4	85	63	22	42	46	11		45	4	*	24	*	1.1
SBT30-SPHC05-85	133.4	85	63	22	42	46	12		45	5	*	26	*	1.4
SBT30-SPHC06-115	163.4	115	93	22	74	46	13		45	6	37	27	M5*0.8P	1.4
SBT30-SPHC08-115	163.4	115	93	22	74	46	15		45	8	37	27	M6*1.0P	1.4
SBT30-SPHC10-115	163.4	115	93	22	74	46	17		45	10	41	31	M8*1.0P	1.4
SBT30-SPHC12-115	163.4	115	93	22	75	46	19		45	12	46	36	M10*1.0P	1.4

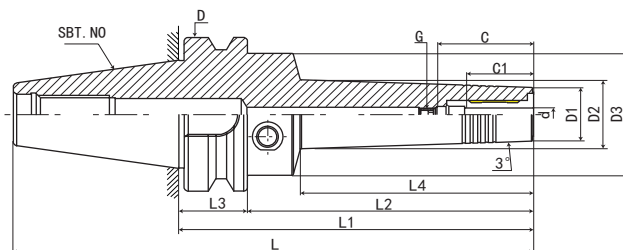
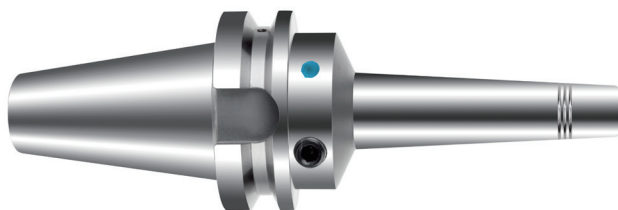
SBT30 - SPHC - 03 - 85



数控刀柄
CNC TOOLS

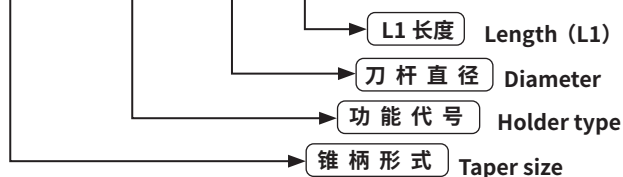
SBT40-SPHC 液压刀柄

SBT40-SPHC HYDRAULIC TOOL HOLDER



型号 Model	L	L1	L2	L3	L4	D	D1	D2	D3	d	最大插入深度 C Max. insertion depth	最少插入深度 C1 Min insertion depth	G	重量 KGS
SBT40-SPHC03-90	155.4	90	63	27	42	63	11		46	3	*	18	*	1.1
SBT40-SPHC03-120	185.4	120	93	27	72	63	11		46	3	*	18	*	1.3
SBT40-SPHC04-90	155.4	90	63	27	42	63	11		46	4	*	24	*	1.1
SBT40-SPHC04-120	185.4	120	93	27	72	63	11		46	4	*	24	*	1.3
SBT40-SPHC05-90	155.4	90	63	27	42	63	12		46	5	*	26	*	1.4
SBT40-SPHC05-120	185.4	120	93	27	72	63	12		46	5	*	26	*	1.3
SBT40-SPHC06-120	185.4	120	93	27	74	63	13		46	6	37	27	M5*0.8P	1.4
SBT40-SPHC06-150	215.4	150	123	27	104	63	13		46	6	37	27	M5*0.8P	1.5
SBT40-SPHC06-200	265.4	200	173	27	154	63	13		46	6	37	27	M5*0.8P	1.7
SBT40-SPHC08-120	185.4	120	93	27	74	63	15		46	8	37	27	M6*1.0P	1.4
SBT40-SPHC08-150	215.4	150	123	27	104	63	15		46	8	37	27	M6*1.0P	1.5
SBT40-SPHC08-200	265.4	200	173	27	154	63	15		46	8	37	27	M6*1.0P	1.7
SBT40-SPHC10-120	185.4	120	93	27	74	63	17		46	10	41	31	M8*1.0P	1.4
SBT40-SPHC10-150	215.4	150	123	27	104	63	17		46	10	41	31	M8*1.0P	1.5
SBT40-SPHC10-200	265.4	200	173	27	154	63	17		46	10	41	31	M8*1.0P	1.7
SBT40-SPHC12-120	185.4	120	93	27	75	63	19		46	12	46	36	M10*1.0P	1.4
SBT40-SPHC12-150	215.4	150	123	27	105	63	19		46	12	46	36	M10*1.0P	1.5
SBT40-SPHC12-200	265.4	200	173	27	154	63	19		46	12	46	36	M10*1.0P	1.7
SBT40-SPHC14-120	185.4	120	93	27	75	63	21		46	14	46	36	M10*1.0P	1.4
SBT40-SPHC14-150	215.4	150	123	27	105	63	21		46	14	46	36	M10*1.0P	1.5
SBT40-SPHC14-200	265.4	200	173	27	154	63	21		46	14	46	36	M10*1.0P	1.7
SBT40-SPHC16-120	185.4	120	93	27	75	63	23		50	16	49	39	M12*1.0P	1.5
SBT40-SPHC16-150	215.4	150	123	27	105	63	23		50	16	49	39	M12*1.0P	1.6
SBT40-SPHC16-200	265.4	200	173	27	154	63	23		50	16	49	39	M12*1.0P	1.8
SBT40-SPHC18-120	185.4	120	93	27	75	63	25		50	18	49	39	M12*1.0P	1.5
SBT40-SPHC18-150	215.4	150	123	27	105	63	25		50	18	49	39	M12*1.0P	1.6
SBT40-SPHC18-200	265.4	200	173	27	154	63	25		50	18	49	39	M12*1.0P	1.8
SBT40-SPHC20-120	185.4	120	93	27	75	63	27		50	20	51	41	M16*1.0P	1.6
SBT40-SPHC20-150	215.4	150	123	27	105	63	27		50	20	51	41	M16*1.0P	1.7
SBT40-SPHC20-200	265.4	200	173	27	154	63	27		50	20	51	41	M16*1.0P	1.9

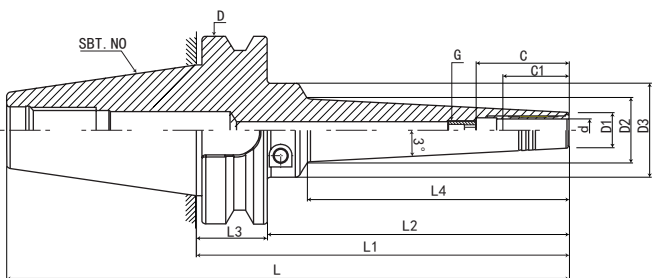
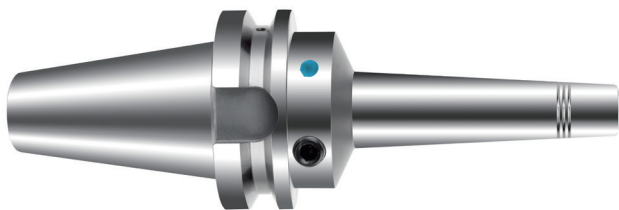
SBT40 - SPHC - 03 - 90



数控刀柄系列 CNC TOOL SYSTEMS

SBT50-SPHC 液压刀柄

SBT50-SPHC HYDRAULIC TOOL HOLDER



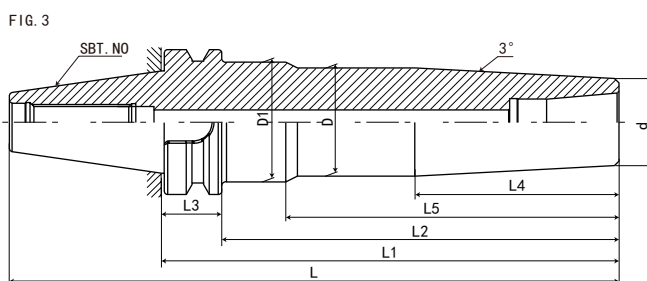
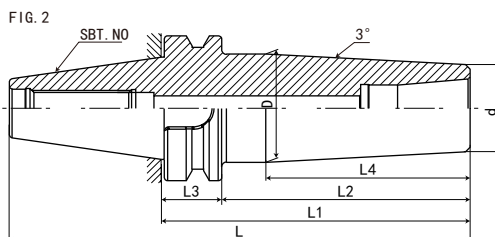
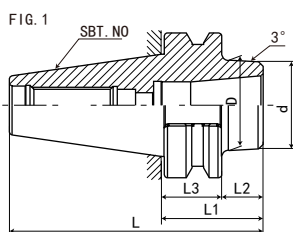
型号 Model	L	L1	L2	L3	L4	D	D1	D2	D3	d	最大插入深度 C Max. insertion depth	最少插入深度 C1 Min insertion depth	G	重量 KGS
SBT50-SPHC05-150	251.8	150	112	38	80	100	12		50	5	*	26	*	4.2
SBT50-SPHC05-200	301.8	200	162	38	130	100	12		50	5	*	26	*	4.4
SBT50-SPHC05-250	351.8	250	212	38	180	100	12		50	5	*	26	*	4.6
SBT50-SPHC05-300	401.8	300	262	38	230	100	12		50	5	*	26	*	4.8
SBT50-SPHC06-150	251.8	150	112	38	80	100	13		50	6	37	27	M5*0.8P	4.2
SBT50-SPHC06-200	301.8	200	162	38	130	100	13		50	6	37	27	M5*0.8P	4.4
SBT50-SPHC06-250	351.8	250	212	38	180	100	13		50	6	37	27	M5*0.8P	4.6
SBT50-SPHC06-300	401.8	300	262	38	230	100	13		50	6	37	27	M5*0.8P	4.8
SBT50-SPHC08-150	251.8	150	112	38	80	100	15		50	8	37	27	M6*1.0P	4.2
SBT50-SPHC08-200	301.8	200	162	38	130	100	15		50	8	37	27	M6*1.0P	4.4
SBT50-SPHC08-250	351.8	250	212	38	180	100	15		50	8	37	27	M6*1.0P	4.6
SBT50-SPHC08-300	401.8	300	262	38	230	100	15		50	8	37	27	M6*1.0P	4.8
SBT50-SPHC10-150	251.8	150	112	38	80	100	17		50	10	41	31	M8*1.0P	4.3
SBT50-SPHC10-200	301.8	200	162	38	130	100	17		50	10	41	31	M8*1.0P	4.5
SBT50-SPHC10-250	351.8	250	212	38	180	100	17		50	10	41	31	M8*1.0P	4.7
SBT50-SPHC10-300	401.8	300	262	38	230	100	17		50	10	41	31	M8*1.0P	4.9
SBT50-SPHC12-150	251.8	150	112	38	80	100	19		50	12	46	36	M10*1.0P	4.3
SBT50-SPHC12-200	301.8	200	162	38	130	100	19		50	12	46	36	M10*1.0P	4.5
SBT50-SPHC12-250	351.8	250	212	38	180	100	19		50	12	46	36	M10*1.0P	4.7
SBT50-SPHC12-300	401.8	300	262	38	230	100	19		50	12	46	36	M10*1.0P	4.9
SBT50-SPHC14-150	251.8	150	112	38	80	100	21		50	14	46	36	M10*1.0P	4.4
SBT50-SPHC14-200	301.8	200	162	38	130	100	21		50	14	46	36	M10*1.0P	4.6
SBT50-SPHC14-250	351.8	250	212	38	180	100	21		50	14	46	36	M10*1.0P	4.8
SBT50-SPHC14-300	401.8	300	262	38	230	100	21		50	14	46	36	M10*1.0P	5
SBT50-SPHC16-150	251.8	150	112	38	80	100	23		50	16	75	39	M12*1.0P	4.4
SBT50-SPHC16-200	301.8	200	162	38	130	100	23		50	16	75	39	M12*1.0P	4.6
SBT50-SPHC16-250	351.8	250	212	38	180	100	23		50	16	75	39	M12*1.0P	4.8
SBT50-SPHC16-300	401.8	300	262	38	230	100	23		50	16	75	39	M12*1.0P	5
SBT50-SPHC18-150	251.8	150	112	38	80	100	25		50	18	75	39	M12*1.0P	4.5
SBT50-SPHC18-200	301.8	200	162	38	130	100	25		50	18	75	39	M12*1.0P	4.7
SBT50-SPHC18-250	351.8	250	212	38	180	100	25		50	18	75	39	M12*1.0P	4.9
SBT50-SPHC18-300	401.8	300	262	38	230	100	25		50	18	75	39	M12*1.0P	5.1
SBT50-SPHC20-150	251.8	150	112	38	80	100	27		50	20	75	41	M16*1.0P	4.6
SBT50-SPHC20-200	301.8	200	162	38	130	100	27		50	20	75	41	M16*1.0P	4.8
SBT50-SPHC20-250	351.8	250	212	38	180	100	27		50	20	75	41	M16*1.0P	5
SBT50-SPHC20-300	401.8	300	262	38	230	100	27		50	20	75	41	M16*1.0P	5.2

SBT30/40-SLK 热缩基础柄

SBT30/40-SLK SEMI-FINISHED SHRINK FIT CHUCK



P.129



规格 Model	L	L1	L2	L3	L4	L5	D	D1	d	FIG	重量 KGS
SBT30-SLK12-45	93.4	45	24	22	-	-	40	-	38	1	
SBT40-SLK12-45	110.4	45	19	27	-	-	40	-	38	1	1.15
SBT40-SLK12-75	140.4	75	49	27	-	-	42.4	-	38	1	1.45
SBT40-SLK12-135	200.4	135	109	27	89	-	47	-	38	2	2.2
SBT40-SLK12-165	230.4	165	139	27	89	-	47	-	38	2	2.65
SBT40-SLK12-200	265.4	200	174	27	89	145	47	52	38	3	3.25
SBT40-SLK12-220	290.4	225	199	27	89	145	47	52	38	3	



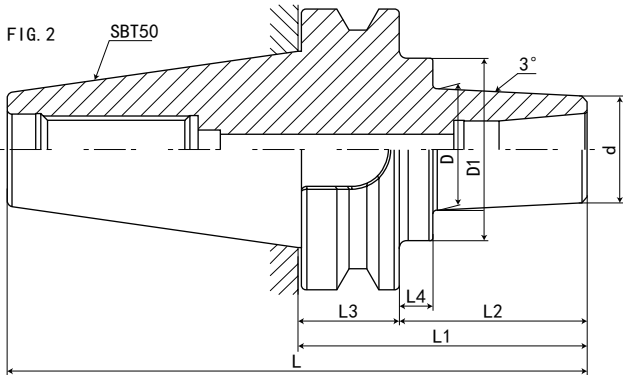
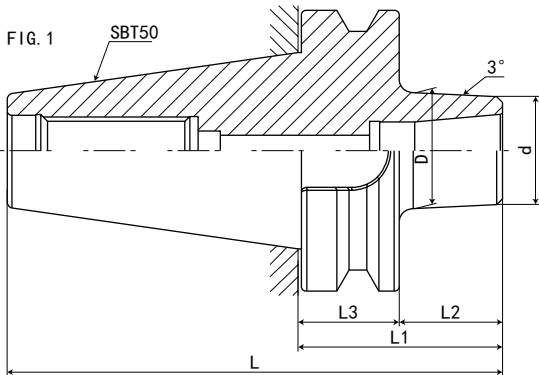
CNC TOOLS
数控
刀柄

SBT50-SLK 热缩基础柄

SBT50-SLK SEMI-FINISHED SHRINK FIT CHUCK



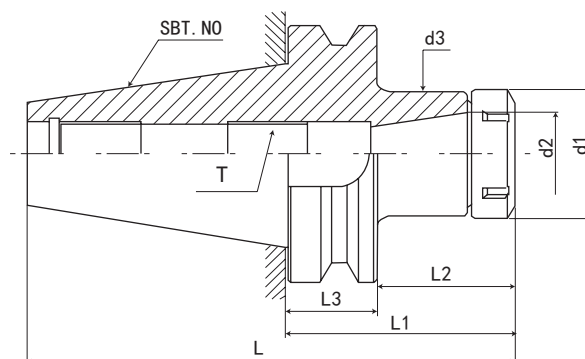
P.129



规格 Model	L	L1	L2	L3	L4	D	D1	d	FIG	重量 KGS
SBT50-SLK12-75	176.8	75	37	38	-	41	-	38	1	
SBT50-SLK12-105	206.8	105	67	38	12	43	65	38	2	
SBT50-SLK12-135	236.8	135	97	38	12	46.5	65	38	2	
SBT50-SLK12-225	326.8	225	187	38	12	56	65	38	2	
SBT50-SLK12-265	366.8	265	227	38	12	60	65	38	2	
SBT50-SLK12-315	416.8	315	277	38	12	65.5	65.5	38	2	

SBT-ER 弹性筒夹刀柄

SBT-ER COLLET CHUCK



P.131



P.106



P.133



P.129

规格 / 型号 Model	L	L1	L2	L3	d1	d2	d3	T	夹持范围 Range	重量 KGS
SBT30-ER11-70	119.3	70	49	22	16	11	16	M6*1.0P	1-7mm	0.53
SBT30-ER11-100	149.3	100	79	22	16	11	16	M6*1.0P	1-7mm	0.53
SBT30-ER16-70	119.3	70	49	22	28	16	28	M10*1.5P	1-10mm	0.61
SBT30-ER16-100	149.3	100	79	22	28	16	28	M10*1.5P	1-10mm	0.7
SBT30-ER20-70	119.3	70	49	22	34	20	34	M12*1.75P	1-13mm	0.67
SBT30-ER20-100	149.3	100	79	22	34	20	34	M12*1.75P	1-13mm	0.8
SBT30-ER25-70	119.3	70	49	22	42	25	42	M16*2.0P	1-16mm	0.7
SBT30-ER25-100	149.3	100	79	22	42	25	42	M16*2.0P	1-16mm	1
SBT30-ER32-70	119.3	70	49	22	50	32	50	M16*2.0P	1-20mm	0.78
SBT30-ER32-100	149.3	100	79	22	50	32	50	M16*2.0P	1-20mm	1
SBT40-ER11-75	141.4	75	49	27	16	11	16	M6*1.0P	1-7mm	
SBT40-ER11-100	166.4	100	74	27	16	11	16	M6*1.0P	1-7mm	
SBT40-ER16-75	141.4	75	49	27	28	16	28	M10*1.5P	1-10mm	1.3
SBT40-ER16-100	166.4	100	74	27	28	16	28	M10*1.5P	1-10mm	1.3
SBT40-ER16-120	186.4	120	94	27	28	16	28	M10*1.5P	1-10mm	1.42
SBT40-ER16-150	216.4	150	124	27	28	16	28	M10*1.5P	1-10mm	1.6
SBT40-ER20-75	141.4	75	49	27	34	20	34	M12*1.75P	1-13mm	1.2
SBT40-ER20-100	166.4	100	74	27	34	20	34	M12*1.75P	1-13mm	1.4
SBT40-ER20-120	186.4	120	94	27	34	20	34	M12*1.75P	1-13mm	1.52
SBT40-ER20-150	216.4	150	124	27	34	20	34	M12*1.75P	1-13mm	1.7
SBT40-ER25-75	141.4	75	49	27	42	25	42	M16*2.0P	1-16mm	1.3
SBT40-ER25-100	166.4	100	74	27	42	25	42	M16*2.0P	1-16mm	1.6
SBT40-ER25-120	186.4	120	94	27	42	25	42	M16*2.0P	1-16mm	1.78
SBT40-ER25-150	216.4	150	124	27	42	25	42	M16*2.0P	1-16mm	2.05
SBT40-ER32-75	141.4	75	49	27	50	32	50	M16*2.0P	1-20mm	1.47
SBT40-ER32-100	166.4	100	74	27	50	32	50	M16*2.0P	1-20mm	1.7
SBT40-ER32-120	186.4	120	94	27	50	32	50	M16*2.0P	1-20mm	1.98
SBT40-ER32-150	216.4	150	124	27	50	32	50	M16*2.0P	1-20mm	2.4
SBT40-ER32-200	266.4	200	174	27	50	32	50	M16*2.0P	1-20mm	3.15
SBT40-ER40-80	146.4	80	54	27	63	40	63	M20*2.0P	2-26mm	1.5
SBT40-ER40-100	166.4	100	74	27	63	40	63	M20*2.0P	2-26mm	2.1
SBT40-ER40-120	186.4	120	94	27	63	40	63	M20*2.0P	2-26mm	2.54
SBT40-ER40-150	216.4	150	124	27	63	40	63	M20*2.0P	2-26mm	3.2

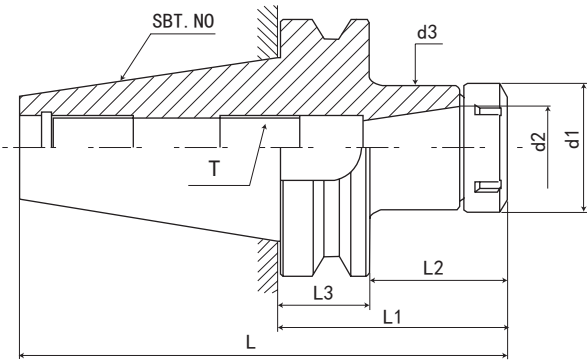


CNC TOOLS
数控刀柄

数控刀柄系列CNC TOOL SYSTEMS

SBT50-ER 弹性筒夹刀柄

SBT50-ER COLLET CHUCK



P.I31



P.I06



P.I33



P.I29

规格 / 型号 Model	L	L1	L2	L3	d1	d2	d3	T	夹持范围 Range	重量 KGS
SBT50-ER16-100	203.3	100	63.5	38	28	16	28	M10*1.5P	1-10mm	3.9
SBT50-ER16-135	238.3	135	98.5	38	28	16	28	M10*1.5P	1-10mm	4.04
SBT50-ER16-165	268.3	165	128.5	38	28	16	28	M10*1.5P	1-10mm	4.16
SBT50-ER16-200	303.3	200	163.5	38	28	16	28	M10*1.5P	1-10mm	4.3
SBT50-ER20-100	203.3	100	63.5	38	34	20	34	M12*1.75P	1-13mm	4
SBT50-ER20-135	238.3	135	98.5	38	34	20	34	M12*1.75P	1-13mm	4.21
SBT50-ER20-165	268.3	165	128.5	38	34	20	34	M12*1.75P	1-13mm	4.39
SBT50-ER20-200	303.3	200	163.5	38	34	20	34	M12*1.75P	1-13mm	4.6
SBT50-ER25-100	203.3	100	63.5	38	42	25	42	M16*2.0P	1-16mm	4.1
SBT50-ER25-135	238.3	135	98.5	38	42	25	42	M16*2.0P	1-16mm	4.45
SBT50-ER25-165	268.3	165	128.5	38	42	25	42	M16*2.0P	1-16mm	4.75
SBT50-ER25-200	303.3	200	163.5	38	42	25	42	M16*2.0P	1-16mm	5.1
SBT50-ER25-250	353.3	250	213.5	38	42	25	42	M16*2.0P	1-16mm	5.8
SBT50-ER25-300	403.3	300	263.5	38	42	25	42	M16*2.0P	1-16mm	6.2
SBT50-ER32-100	203.3	100	63.5	38	50	32	50	M16*2.0P	1-20mm	4.2
SBT50-ER32-135	238.3	135	98.5	38	50	32	50	M16*2.0P	1-20mm	4.725
SBT50-ER32-165	268.3	165	128.5	38	50	32	50	M16*2.0P	1-20mm	5.175
SBT50-ER32-200	303.3	200	163.5	38	50	32	50	M16*2.0P	1-20mm	5.7
SBT50-ER32-250	353.3	250	213.5	38	50	32	50	M16*2.0P	1-20mm	6.3
SBT50-ER32-300	403.3	300	263.5	38	50	32	50	M16*2.0P	1-20mm	7.2
SBT50-ER40-100	203.3	100	63.5	38	63	40	63	M20*2.0P	2-26mm	4.5
SBT50-ER40-135	238.3	135	98.5	38	63	40	63	M20*2.0P	2-26mm	5.27
SBT50-ER40-165	268.3	165	128.5	38	63	40	63	M20*2.0P	2-26mm	5.93
SBT50-ER40-200	303.3	200	163.5	38	63	40	63	M20*2.0P	2-26mm	6.7
SBT50-ER40-250	353.3	250	213.5	38	63	40	63	M20*2.0P	2-26mm	7.8
SBT50-ER40-300	403.3	300	263.5	38	63	40	63	M20*2.0P	2-26mm	9
SBT50-ER50-100	203.3	100	63.5	38	78	50	78	M24*2.0P	5-34mm	3.9
SBT50-ER50-150	253.3	150	113.5	38	78	50	78	M24*2.0P	5-34mm	6.2

SBT30-FMH 端面出水铣刀柄

SBT30-FMH FACE MILL HOLDER-COOLANT TYPE



FIG. 1

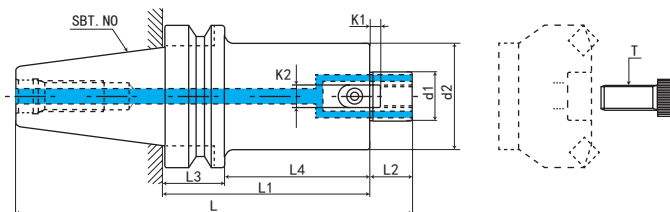
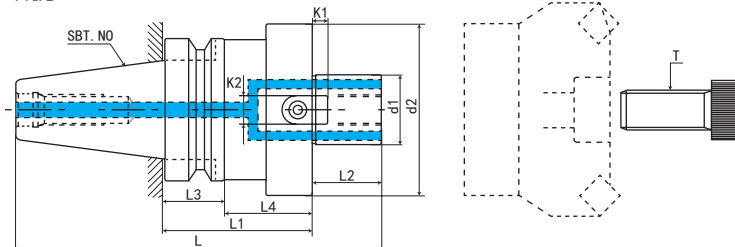


FIG. 2



规格 Model	L	L1	L2	L3	L4	d1	d2	K1	K2	T	FIG	重量 KGS
SBT30-FMH16-45-D37	111.3	45	17	22	24	16	37	3.2	8	M8*1.25P	1	
SBT30-FMH16-60-D37	126.3	60	17	22	39	16	37	3.2	8	M8*1.25P	1	0.5
SBT30-FMH22-45-D47	112.3	45	18	22	24	22	47	4.8	10	M10*1.5P	2	0.75
SBT30-FMH22-60-D47	127.3	60	18	22	39	22	47	4.8	10	M10*1.5P	2	1.5
SBT30-FMH27-45-D60	114.3	45	20	22	24	27	60	5.8	12	M12*1.75P	2	1.45
SBT30-FMH27-60-D60	129.3	60	20	22	39	27	60	5.8	12	M12*1.75P	2	1.45
SBT30-FMH32-45-D68	116.3	45	22	22	24	32	68	6.8	14	M16*2.0P	2	1.5
SBT30-FMH32-60-D68	131.3	60	22	22	39	32	68	6.8	14	M16*2.0P	2	1.5
SBT30-FMH25.4-45-D60	114.3	45	20	22	24	25.4	60	4.52	9.52	M12*1.75P	2	1.1
SBT30-FMH25.4-60-D60	129.3	60	20	22	39	25.4	60	4.52	9.52	M12*1.75P	2	1.3
SBT30-FMH31.75-45-D68	116.3	45	22	22	24	31.75	68	6.7	12.7	M16*2.0P	2	1.35
SBT30-FMH31.75-60-D68	131.3	60	22	22	39	31.75	68	6.7	12.7	M16*2.0P	2	1.5

数控刀柄系列CNC TOOL SYSTEMS

SBT40-FMH 端面出水铣刀柄

SBT40-FMH FACE MILL HOLDER-COOLANT TYPE



P.I29



P.L12

FIG. 1

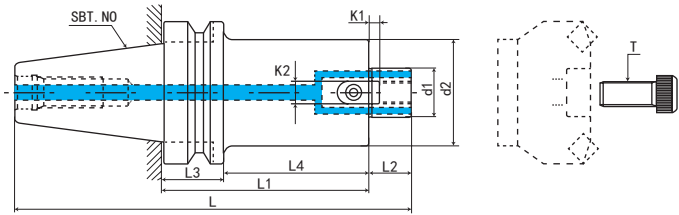
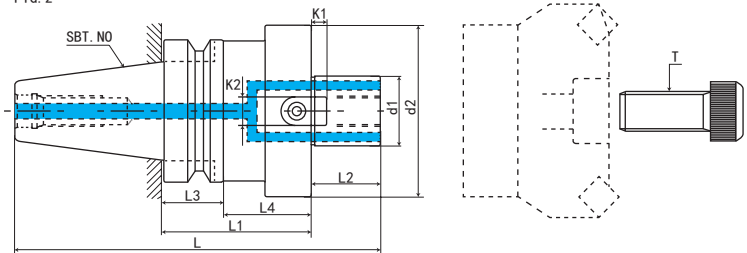


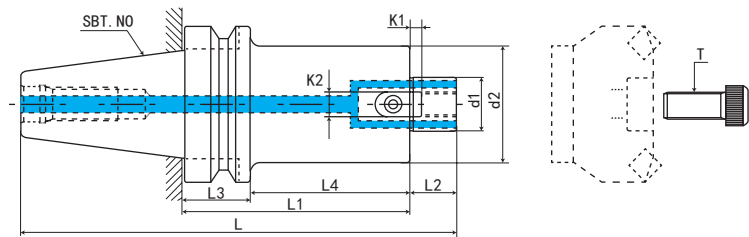
FIG. 2



规格 Model	L	L1	L2	L3	L4	d1	d2	K1	K2	T	FIG	重量 KGS
SBT40-FMH16-60-D37	143.4	60	17	27	34	16	37	3.2	8	M8*1.25P	1	1.3
SBT40-FMH16-100-D37	183.4	100	17	27	74	16	37	3.2	8	M8*1.25P	1	1.4
SBT40-FMH22-45-D47	129.4	45	18	27	19	22	47	4.8	10	M10*1.5P	1	1.29
SBT40-FMH22-60-D47	144.4	60	18	27	34	22	47	4.8	10	M10*1.5P	1	1.5
SBT40-FMH22-100-D47	184.4	100	18	27	74	22	47	4.8	10	M10*1.5P	1	2.05
SBT40-FMH22-150-D47	234.4	150	18	27	124	22	47	4.8	10	M10*1.5P	1	2.75
SBT40-FMH22-200-D47	284.4	200	18	27	174	22	47	4.8	10	M10*1.5P	1	3.6
SBT40-FMH22-250-D47	334.4	250	18	27	224	22	47	4.8	10	M10*1.5P	1	4.25
SBT40-FMH27-45-D60	131.4	45	20	27	19	27	60	5.8	12	M12*1.75P	1	2.23
SBT40-FMH27-60-D60	146.4	60	20	27	34	27	60	5.8	12	M12*1.75P	1	2.35
SBT40-FMH27-100-D60	186.4	100	20	27	74	27	60	5.8	12	M12*1.75P	1	3.1
SBT40-FMH27-150-D60	236.4	150	20	27	124	27	60	5.8	12	M12*1.75P	1	3.9
SBT40-FMH27-200-D60	286.4	200	20	27	174	27	60	5.8	12	M12*1.75P	1	4.8
SBT40-FMH32-45-D68	133.4	45	22	27	19	32	68	6.8	14	M16*2.0P	2	1.78
SBT40-FMH32-60-D68	148.4	60	22	27	34	32	68	6.8	14	M16*2.0P	2	1.9
SBT40-FMH32-100-D68	188.4	100	22	27	74	32	68	6.8	14	M16*2.0P	2	2.8
SBT40-FMH32-150-D68	238.4	150	22	27	124	32	68	6.8	14	M16*2.0P	2	3.6
SBT40-FMH40-45-D78	136.41	45	25	27	19	40	78	8.3	16	M16*2.0P	2	2.605
SBT40-FMH40-60-D78	151.4	60	25	27	34	40	78	8.3	16	M16*2.0P	2	2.8
SBT40-FMH40-100-D78	191.4	100	25	27	74	40	78	8.3	16	M16*2.0P	2	3.6
SBT40-FMH40-150-D78	241.4	150	25	27	124	40	78	8.3	16	M16*2.0P	2	4.9
SBT40-FMH25.4-45-D60	131.4	45	20	27	19	25.4	60	4.52	9.52	M12*1.75P	1	1.395
SBT40-FMH25.4-60-D60	146.4	60	20	27	34	25.4	60	4.52	9.52	M12*1.75P	1	1.5
SBT40-FMH25.4-100-D60	186.4	100	20	27	74	25.4	60	4.52	9.52	M12*1.75P	1	2.05
SBT40-FMH25.4-150-D60	236.4	150	20	27	124	25.4	60	4.52	9.52	M12*1.75P	1	2.75
SBT40-FMH25.4-200-D60	286.4	200	20	27	174	25.4	60	4.52	9.52	M12*1.75P	1	3.6
SBT40-FMH31.75-45-D68	133.4	45	22	27	19	31.75	68	6.7	12.7	M16*2.0P	2	1.87
SBT40-FMH31.75-60-D68	148.4	60	22	27	34	31.75	68	6.7	12.7	M16*2.0P	2	2.05
SBT40-FMH31.75-100-D68	188.4	100	22	27	74	31.75	68	6.7	12.7	M16*2.0P	2	2.9
SBT40-FMH31.75-150-D68	238.4	150	22	27	124	31.75	68	6.7	12.7	M16*2.0P	2	4.1
SBT40-FMH38.1-45-D78	136.4	45	25	27	19	38.1	78	8.87	15.87	M16*2.0P	2	1.78
SBT40-FMH38.1-60-D78	151.4	60	25	27	34	38.1	78	8.87	15.87	M16*2.0P	2	2.1
SBT40-FMH38.1-100-D78	191.4	100	25	27	74	38.1	78	8.87	15.87	M16*2.0P	2	2.95
SBT40-FMH38.1-150-D78	241.4	150	25	27	124	38.1	78	8.87	15.87	M16*2.0P	2	4.02

SBT50-FMH 端面出水铣刀柄

SBT50-FMH FACE MILL HOLDER-COOLANT TYPE



P.I29



P.L12

规格 Model	L	L1	L2	L3	L4	d1	d2	K1	K2	T	重量 KGS
SBT50-FMH16- 60-D37	180.3	60	17	38	23.5	16	37	3.2	8	M8*1.25P	4
SBT50-FMH16-100-D37	220.3	100	17	38	63.5	16	37	3.2	8	M8*1.25P	4.2
SBT50-FMH16-150-D37	270.3	150	17	38	113.5	16	37	3.2	8	M8*1.25P	4.5
SBT50-FMH16-200-D37	320.3	200	17	38	163.5	16	37	3.2	8	M8*1.25P	4.8
SBT50-FMH22- 60-D47	181.3	60	18	38	23.5	22	47	4.8	10	M10*1.5P	4.6
SBT50-FMH22-100-D47	221.3	100	18	38	63.5	22	47	4.8	10	M10*1.5P	4.55
SBT50-FMH22-150-D47	271.3	150	18	38	113.5	22	47	4.8	10	M10*1.5P	5.25
SBT50-FMH22-200-D47	321.3	200	18	38	163.5	22	47	4.8	10	M10*1.5P	6
SBT50-FMH22-250-D47	371.3	250	18	38	213.5	22	47	4.8	10	M10*1.5P	7
SBT50-FMH22-300-D47	421.3	300	18	38	263.5	22	47	4.8	10	M10*1.5P	7.7
SBT50-FMH22-350-D47	471.3	350	18	38	313.5	22	47	4.8	10	M10*1.5P	8.4
SBT50-FMH22-400-D47	521.3	400	18	38	363.5	22	47	4.8	10	M10*1.5P	9.2
SBT50-FMH22-450-D47	571.3	450	18	38	413.5	22	47	4.8	10	M10*1.5P	10
SBT50-FMH22-500-D47	621.3	500	18	38	463.5	22	47	4.8	10	M10*1.5P	11.2
SBT50-FMH22- 60-D60	181.3	60	18	38	23.5	22	60	4.8	10	M10*1.5P	4.4
SBT50-FMH22-100-D60	221.3	100	18	38	63.5	22	60	4.8	10	M10*1.5P	5.2
SBT50-FMH22-150-D60	271.3	150	18	38	113.5	22	60	4.8	10	M10*1.5P	6.3
SBT50-FMH22-200-D60	321.3	200	18	38	163.5	22	60	4.8	10	M10*1.5P	7.2
SBT50-FMH22-250-D60	371.3	250	18	38	213.5	22	60	4.8	10	M10*1.5P	8.3
SBT50-FMH22-300-D60	421.3	300	18	38	263.5	22	60	4.8	10	M10*1.5P	
SBT50-FMH22-350-D60	471.3	350	18	38	313.5	22	60	4.8	10	M10*1.5P	
SBT50-FMH22-400-D60	521.3	400	18	38	363.5	22	60	4.8	10	M10*1.5P	
SBT50-FMH22-450-D60	571.3	450	18	38	413.5	22	60	4.8	10	M10*1.5P	
SBT50-FMH22-500-D60	621.3	500	18	38	463.5	22	60	4.8	10	M10*1.5P	
SBT50-FMH27- 45-D60	168.3	45	20	38	8.5	27	60	5.8	12	M12*1.75P	
SBT50-FMH27- 60-D60	183.3	60	20	38	23.5	27	60	5.8	12	M12*1.75P	4.5
SBT50-FMH27-100-D60	223.3	100	20	38	63.5	27	60	5.8	12	M12*1.75P	5.3
SBT50-FMH27-150-D60	273.3	150	20	38	113.5	27	60	5.8	12	M12*1.75P	6.2
SBT50-FMH27-200-D60	323.3	200	20	38	163.5	27	60	5.8	12	M12*1.75P	7.2
SBT50-FMH27-250-D60	373.3	250	20	38	213.5	27	60	5.8	12	M12*1.75P	8.4
SBT50-FMH27-300-D60	423.3	300	20	38	263.5	27	60	5.8	12	M12*1.75P	
SBT50-FMH27-350-D60	473.3	350	20	38	313.5	27	60	5.8	12	M12*1.75P	
SBT50-FMH27-400-D60	523.3	400	20	38	363.5	27	60	5.8	12	M12*1.75P	
SBT50-FMH27-450-D60	573.3	450	20	38	413.5	27	60	5.8	12	M12*1.75P	
SBT50-FMH27-500-D60	623.3	500	20	38	463.5	27	60	5.8	12	M12*1.75P	



CNC TOOLS
数控
刀柄

数控刀柄系列 CNC TOOL SYSTEMS

SBT50-FMH 端面出水铣刀柄

SBT50-FMH FACE MILL HOLDER-COOLANT TYPE



P.I29



P.L12

FIG. 1

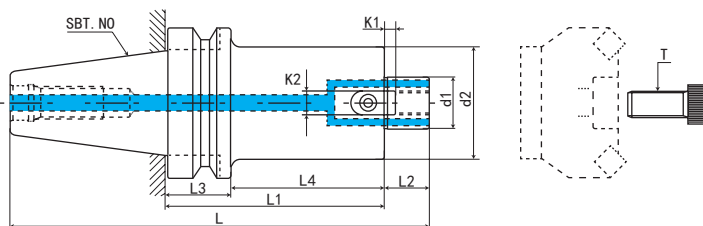
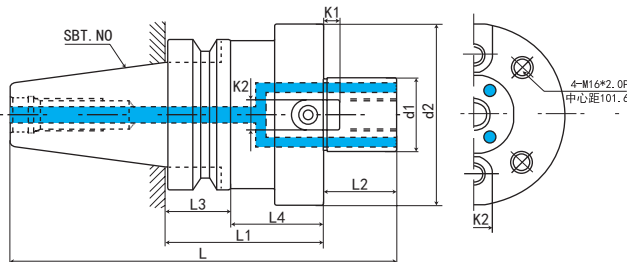


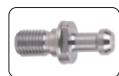
FIG. 2



规格 Model	L	L1	L2	L3	L4	d1	d2	K1	K2	T	FIG	重量 KGS
SBT50-FMH27-45-D76	168.3	45	20	38	8.5	27	76	5.8	12	M12*1.75P	1	
SBT50-FMH27-60-D76	183.3	60	20	38	23.5	27	76	5.8	12	M12*1.75P	1	
SBT50-FMH27-100-D76	223.3	100	20	38	63.5	27	76	5.8	12	M12*1.75P	1	
SBT50-FMH27-150-D76	273.3	150	20	38	113.5	27	76	5.8	12	M12*1.75P	1	
SBT50-FMH27-200-D76	323.3	200	20	38	163.5	27	76	5.8	12	M12*1.75P	1	
SBT50-FMH27-250-D76	373.3	250	20	38	213.5	27	76	5.8	12	M12*1.75P	1	
SBT50-FMH27-300-D76	423.3	300	20	38	263.5	27	76	5.8	12	M12*1.75P	1	
SBT50-FMH27-350-D76	473.3	350	20	38	313.5	27	76	5.8	12	M12*1.75P	1	
SBT50-FMH27-400-D76	523.3	400	20	38	363.5	27	76	5.8	12	M12*1.75P	1	
SBT50-FMH27-450-D76	573.3	450	20	38	413.5	27	76	5.8	12	M12*1.75P	1	
SBT50-FMH27-500-D76	623.3	500	20	38	463.5	27	76	5.8	12	M12*1.75P	1	
SBT50-FMH32-45-D96	170.3	45	22	38	8.5	32	96	6.8	14	M16*2.0P	1	
SBT50-FMH32-60-D96	185.3	60	22	38	23.5	32	96	6.8	14	M16*2.0P	1	5.3
SBT50-FMH32-100-D96	225.3	100	22	38	63.5	32	96	6.8	14	M16*2.0P	1	7.5
SBT50-FMH32-150-D96	275.3	150	22	38	113.5	32	96	6.8	14	M16*2.0P	1	10.1
SBT50-FMH32-200-D96	325.3	200	22	38	163.5	32	96	6.8	14	M16*2.0P	1	13
SBT50-FMH32-250-D96	375.3	250	22	38	213.5	32	96	6.8	14	M16*2.0P	1	
SBT50-FMH32-300-D96	425.3	300	22	38	263.5	32	96	6.8	14	M16*2.0P	1	
SBT50-FMH32-350-D96	475.3	350	22	38	313.5	32	96	6.8	14	M16*2.0P	1	
SBT50-FMH40-45-D100	173.3	45	25	38	8.5	40	100	8.3	16	M16*2.0P	1	
SBT50-FMH40-60-D100	188.3	60	25	38	23.5	40	100	8.3	16	M16*2.0P	1	5.7
SBT50-FMH40-100-D100	228.3	100	25	38	63.5	40	100	8.3	16	M16*2.0P	1	8.2
SBT50-FMH40-150-D100	278.3	150	25	38	113.5	40	100	8.3	16	M16*2.0P	1	10.8
SBT50-FMH40-200-D100	328.3	200	25	38	163.5	40	100	8.3	16	M16*2.0P	1	13.9
SBT50-FMH40-250-D100	378.3	250	25	38	213.5	40	100	8.3	16	M16*2.0P	1	
SBT50-FMH40-300-D100	428.3	300	25	38	263.5	40	100	8.3	16	M16*2.0P	1	
SBT50-FMH60-75-D128	203.3	75	25	38	38.5	60	128	12.5	25.4	M16*2.0P	2	
SBT50-FMH60-100-D128	228.3	100	25	38	63.5	60	128	12.5	25.4	M16*2.0P	2	
SBT50-FMH60-150-D128	278.3	150	25	38	113.5	60	128	12.5	25.4	M16*2.0P	2	

SBT50-FMH 端面出水铣刀柄

SBT50-FMH FACE MILL HOLDER-COOLANT TYPE



P.I29



P.L12

FIG. 1

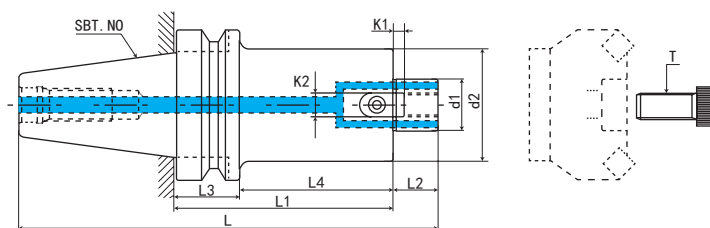
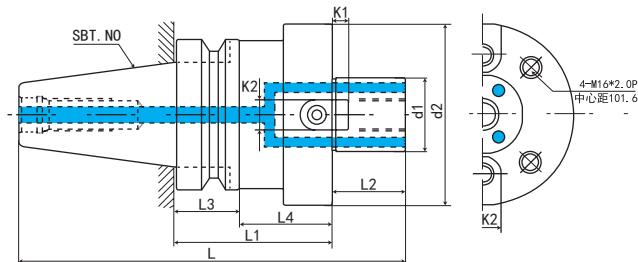


FIG. 2



规格 Model	L	L1	L2	L3	L4	d1	d2	K1	K2	T	FIG	重量 KGS
SBT50-FMH25.4-45-D60	168.3	45	20	38	8.5	25.4	60	4.52	9.52	M12*1.75P	1	
SBT50-FMH25.4-60-D60	183.3	60	20	38	23.5	25.4	60	4.52	9.52	M12*1.75P	1	4.5
SBT50-FMH25.4-100-D60	223.3	100	20	38	63.5	25.4	60	4.52	9.52	M12*1.75P	1	5.3
SBT50-FMH25.4-150-D60	273.3	150	20	38	113.5	25.4	60	4.52	9.52	M12*1.75P	1	6.4
SBT50-FMH25.4-200-D60	323.3	200	20	38	163.5	25.4	60	4.52	9.52	M12*1.75P	1	7.4
SBT50-FMH25.4-250-D60	373.3	250	20	38	213.5	25.4	60	4.52	9.52	M12*1.75P	1	
SBT50-FMH25.4-300-D60	423.3	300	20	38	263.5	25.4	60	4.52	9.52	M12*1.75P	1	
SBT50-FMH25.4-45-D76	168.3	45	20	38	8.5	25.4	76	4.52	9.52	M12*1.75P	1	
SBT50-FMH25.4-60-D76	183.3	60	20	38	23.5	25.4	76	4.52	9.52	M12*1.75P	1	
SBT50-FMH25.4-100-D76	223.3	100	20	38	63.5	25.4	76	4.52	9.52	M12*1.75P	1	
SBT50-FMH25.4-150-D76	273.3	150	20	38	113.5	25.4	76	4.52	9.52	M12*1.75P	1	
SBT50-FMH25.4-200-D76	323.3	200	20	38	163.5	25.4	76	4.52	9.52	M12*1.75P	1	
SBT50-FMH25.4-250-D76	373.3	250	20	38	213.5	25.4	76	4.52	9.52	M12*1.75P	1	
SBT50-FMH25.4-300-D76	423.3	300	20	38	263.5	25.4	76	4.52	9.52	M12*1.75P	1	
SBT50-FMH31.75-45-D96	170.3	45	22	38	8.5	31.75	96	6.7	12.7	M16*2.0P	1	
SBT50-FMH31.75-60-D96	185.3	60	22	38	23.5	31.75	96	6.7	12.7	M16*2.0P	1	5.3
SBT50-FMH31.75-100-D96	225.3	100	22	38	63.5	31.75	96	6.7	12.7	M16*2.0P	1	7.5
SBT50-FMH31.75-150-D96	275.3	150	22	38	113.5	31.75	96	6.7	12.7	M16*2.0P	1	10.3
SBT50-FMH31.75-200-D96	325.3	200	22	38	163.5	31.75	96	6.7	12.7	M16*2.0P	1	13
SBT50-FMH31.75-250-D96	375.3	250	22	38	213.5	31.75	96	6.7	12.7	M16*2.0P	1	
SBT50-FMH31.75-300-D96	425.3	300	22	38	263.5	31.75	96	6.7	12.7	M16*2.0P	1	
SBT50-FMH38.1-45-D100	173.3	45	25	38	8.5	38.1	100	8.87	15.87	M16*2.0P	1	
SBT50-FMH38.1-60-D100	188.3	60	25	38	23.5	38.1	100	8.87	15.87	M16*2.0P	1	5.6
SBT50-FMH38.1-100-D100	228.3	100	25	38	63.5	38.1	100	8.87	15.87	M16*2.0P	1	8
SBT50-FMH38.1-150-D100	278.3	150	25	38	113.5	38.1	100	8.87	15.87	M16*2.0P	1	
SBT50-FMH38.1-200-D100	328.3	200	25	38	163.5	38.1	100	8.87	15.87	M16*2.0P	1	
SBT50-FMH38.1-250-D100	378.3	250	25	38	213.5	38.1	100	8.87	15.87	M16*2.0P	1	
SBT50-FMH38.1-300-D100	428.3	300	25	38	263.5	38.1	100	8.87	15.87	M16*2.0P	1	
SBT50-FMH47.625-75-D128	203.3	75	25	38	38.5	47.625	128	12.5	25.4	M16*2.0P	2	7.9
SBT50-FMH47.625-100-D128	228.3	100	25	38	63.5	47.625	128	12.5	25.4	M16*2.0P	2	
SBT50-FMH47.625-150-D128	278.3	150	25	38	113.5	47.625	128	12.5	25.4	M16*2.0P	2	



CNC TOOLS
数控刀柄

数控刀柄系列CNC TOOL SYSTEMS

SBT-SLN 侧固式刀柄

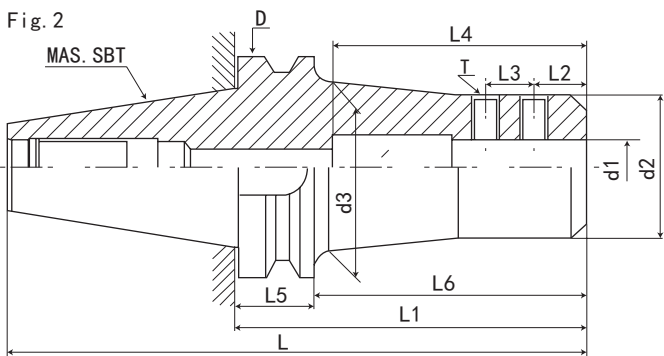
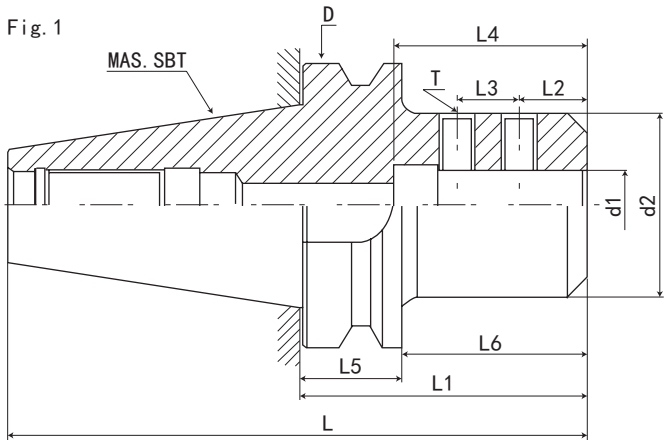
SBT-SLN SIDE LOCK END MILL HOLDER



P.129



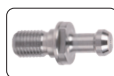
P.003



规格 Model	L	L1	L2	L3	L4	L5	L6	d1	d2	d3	FIG	T	重量 KGS
SBT30-SLN16-75	124.3	75	14	14	48	22	54	16	48	-	1	M10*1.5P	1.03
SBT30-SLN20-75	124.3	75	14	14	50	22	54	20	48	-	1	M10*1.5P	0.98
SBT30-SLN25-80	129.3	80	15	20	56	22	59	25	48	-	1	M16*2.0P	0.97
SBT30-SLN32-85	134.3	85	15	20	60	22	59	32	63	-	1	M16*2.0P	1.38
SBT40-SLN16-100	166.4	100	22	18	100	27	74	16	48	-	1	M10*1.5P	2
SBT40-SLN16-150	216.4	150	22	18	100	27	124	16	40	45	2	M10*1.5P	2.2
SBT40-SLN16-200	266.4	200	22	18	100	27	174	16	40	45	2	M10*1.5P	
SBT40-SLN20-100	166.4	100	25	20	110	27	74	20	52	-	1	M12*1.75P	2
SBT40-SLN20-150	216.4	150	25	20	110	27	124	20	45	50	2	M12*1.75P	2.5
SBT40-SLN20-200	266.4	200	25	20	110	27	174	20	45	50	2	M12*1.75P	
SBT40-SLN25-100	166.4	100	24	25	120	27	74	25	65	-	1	M12*1.75P	2.5
SBT40-SLN25-150	216.4	150	24	25	120	27	124	25	50	55	2	M12*1.75P	2.6
SBT40-SLN25-200	266.4	200	24	25	120	27	174	25	50	55	2	M12*1.75P	
SBT40-SLN32-100	166.4	100	24	28	120	27	74	32	65	-	1	M16*2.0P	2.4
SBT40-SLN32-150	216.4	150	24	28	120	27	124	32	58	63	2	M16*2.0P	2.9
SBT40-SLN32-200	266.4	200	24	28	120	27	174	32	58	63	2	M16*2.0P	
SBT40-SLN40-105	171.4	105	30	32	120	27	79	40	73	-	1	M16*2.0P	2.8
SBT40-SLN40-150	216.4	150	30	32	120	27	124	40	73	-	1	M16*2.0P	3.8
SBT40-SLN40-200	266.4	200	30	32	120	27	174	40	73	-	1	M16*2.0P	

SBT50-SLN 侧固式刀柄

SBT50-SLN SIDE LOCK END MILL HOLDER



P.129



P.003

Fig. 1

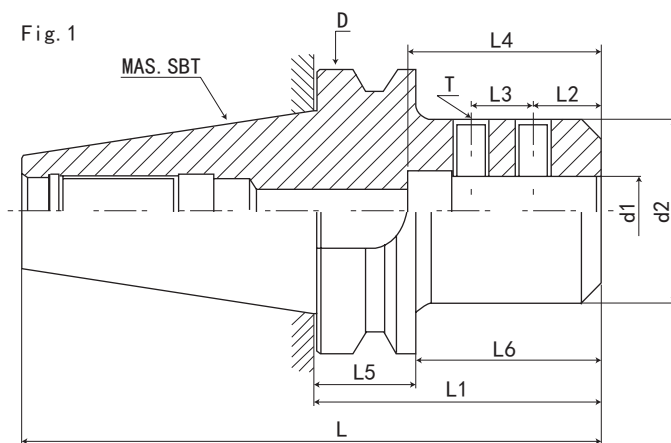
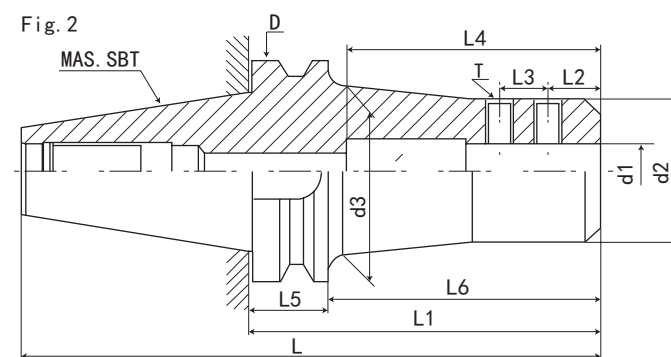


Fig. 2



规格 Model	L	L1	L2	L3	L4	L5	L6	d1	d2	d3	FIG	T	重量 KGS
SBT50-SLN16-100	203.3	100	22	18	100	38	63.5	16	48	-	1	M10*1.5P	4.7
SBT50-SLN16-135	238.3	135	22	18	100	38	98.5	16	48	-	1	M10*1.5P	
SBT50-SLN16-165	268.3	165	22	18	100	38	128.5	16	40	45	2	M10*1.5P	
SBT50-SLN16-200	303.3	200	22	18	100	38	163.5	16	40	45	2	M10*1.5P	
SBT50-SLN16-250	353.3	250	22	18	100	38	213.5	16	40	45	2	M10*1.5P	
SBT50-SLN20-100	203.3	100	25	20	110	38	63.5	20	52	-	1	M12*1.75P	4.8
SBT50-SLN20-135	238.3	135	25	20	110	38	98.5	20	52	-	1	M12*1.75P	
SBT50-SLN20-165	268.3	165	25	20	110	38	128.5	20	45	50	2	M12*1.75P	
SBT50-SLN20-200	303.3	200	25	20	110	38	163.5	20	45	50	2	M12*1.75P	
SBT50-SLN20-250	353.3	250	25	20	110	38	213.5	20	45	50	2	M12*1.75P	
SBT50-SLN25-105	208.3	105	24	25	120	38	68.5	25	65	-	1	M12*1.75P	5.4
SBT50-SLN25-135	238.3	135	24	25	120	38	98.5	25	65	-	1	M12*1.75P	
SBT50-SLN25-165	268.3	165	24	25	120	38	128.5	25	50	55	2	M12*1.75P	
SBT50-SLN25-200	303.3	200	24	25	120	38	163.5	25	50	55	2	M12*1.75P	
SBT50-SLN25-250	353.3	250	24	25	120	38	213.5	25	50	55	2	M12*1.75P	
SBT50-SLN25-300	403.3	300	24	25	120	38	263.5	25	50	55	2	M12*1.75P	
SBT50-SLN32-105	208.3	105	24	28	120	38	68.5	32	72	-	1	M16*2.0P	5.5
SBT50-SLN32-135	238.3	135	24	28	120	38	98.5	32	72	-	1	M16*2.0P	
SBT50-SLN32-165	268.3	165	24	28	120	38	128.5	32	60	65	2	M16*2.0P	
SBT50-SLN32-200	303.3	200	24	28	120	38	163.5	32	60	65	2	M16*2.0P	
SBT50-SLN32-250	353.3	250	24	28	120	38	213.5	32	60	65	2	M16*2.0P	
SBT50-SLN32-300	403.3	300	24	28	120	38	263.5	32	60	65	2	M16*2.0P	



CNC TOOLS
数控刀柄

数控刀柄系列CNC TOOL SYSTEMS

SBT50-SLN 侧固式刀柄

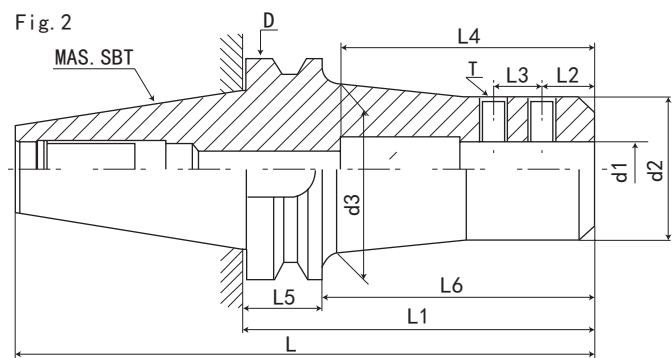
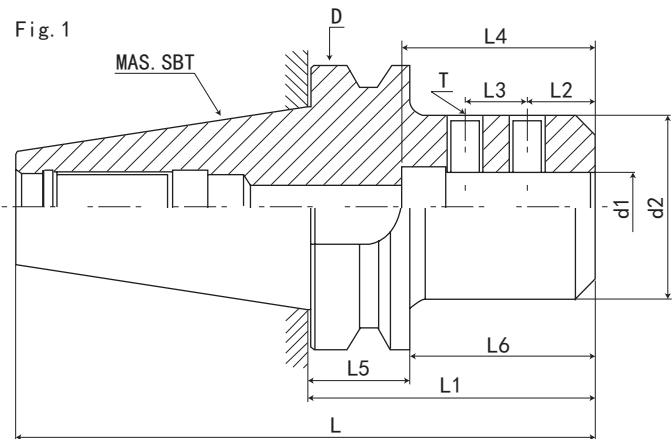
SBT50-SLN SIDE LOCK END MILL HOLDER



P.I29



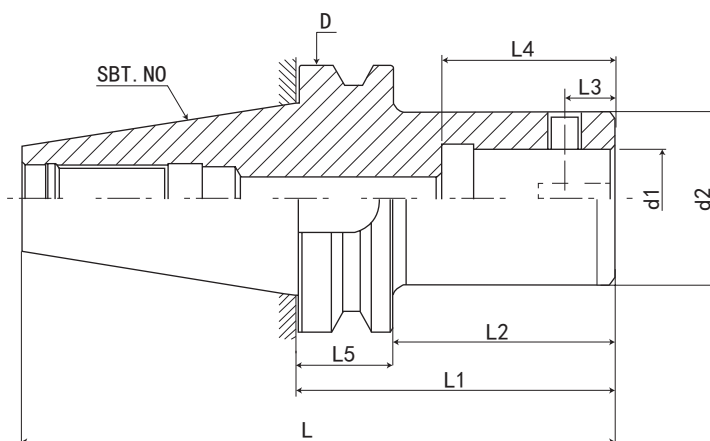
P.O03



规格 Model	L	L1	L2	L3	L4	L5	L6	d1	d2	d3	FIG	T	重量 KGS
SBT50-SLN40-115	218.3	115	30	32	120	38	78.5	40	80	-	1	M20*2.5P	5.8
SBT50-SLN40-135	238.3	135	30	32	120	38	98.5	40	80	-	1	M20*2.5P	
SBT50-SLN40-165	268.3	165	30	32	120	38	128.5	40	70	75	2	M16*2.0P	
SBT50-SLN40-200	303.3	200	30	32	120	38	163.5	40	70	75	2	M16*2.0P	
SBT50-SLN40-250	353.3	250	30	32	120	38	213.5	40	70	75	2	M16*2.0P	
SBT50-SLN40-300	403.3	300	30	32	120	38	263.5	40	70	75	2	M16*2.0P	
SBT50-SLN42-115	218.3	115	30	32	120	38	78.5	42	80	-	1	M20*2.5P	5.6
SBT50-SLN42-135	238.3	135	30	32	120	38	98.5	42	80	-	1	M20*2.5P	
SBT50-SLN42-165	268.3	165	30	32	120	38	128.5	42	70	75	2	M16*2.0P	
SBT50-SLN42-200	303.3	200	30	32	120	38	163.5	42	70	75	2	M16*2.0P	
SBT50-SLN50-120	221.3	120	35	35	120	38	78.5	50	90	-	1	M20*2.5P	
SBT50-SLN50-150	253.3	150	35	35	120	38	113.5	50	85	90	2	M20*2.5P	
SBT50-SLN50-200	303.3	200	35	35	120	38	163.5	50	85	90	2	M20*2.5P	
SBT50-SLN50.8-120	221.3	120	35	35	120	38	78.5	50.8	90	-	1	M20*2.5P	
SBT50-SLN50.8-150	253.3	150	35	35	120	38	113.5	50.8	85	90	2	M20*2.5P	
SBT50-SLN50.8-200	303.3	200	35	35	120	38	163.5	50.8	85	90	2	M20*2.5P	

SBT-CK 镗头刀柄

SBT-CK BORING HEAD SHANK



P.129



P.J39



P.130

规格 Model	L	L1	L2	L3	L4	L5	d1	d2	D	T	重量 KGS
SBT30-CK1-105	154.3	105	84	5.05	30	22	11	19	46	M4*0.5P	0.51
SBT30-CK2-75	124.3	75	54	6.62	31	22	14	24	46	M5*0.5P	0.44
SBT30-CK2-120	169.3	120	99	6.62	31	22	14	24	46	M5*0.5P	0.57
SBT30-CK3-80	129.3	80	59	8	35	22	18	31	46	M6*0.75P	0.45
SBT30-CK3-120	169.3	120	99	8	35	22	18	31	46	M6*0.75P	0.67
SBT30-CK4-85	134.3	85	64	10	39	22	22	39	46	M8*0.75P	0.46
SBT30-CK4-120	169.3	120	99	10	39	22	22	39	46	M8*0.75P	0.78
SBT30-CK5-85	134.3	85	64	13	45	22	28	50	46	M10*1.0P	0.76
SBT30-CK5-120	169.3	120	99	13	45	22	28	50	46	M10*1.0P	0.8
SBT30-CK6-85	134.3	85	64	16	55	22	36	63	46	M12*1.0P	0.85
SBT30-CK6-135	184.3	135	114	16	55	22	36	63	46	M12*1.0P	0.93
SBT40-CK1-105	171.4	105	79	5.05	30	27	11	19	63	M4*0.5P	
SBT40-CK2-80	146.4	80	54	6.62	31	27	14	24	63	M5*0.5P	
SBT40-CK2-120	186.4	120	94	6.62	31	27	14	24	63	M5*0.5P	
SBT40-CK3-85	151.4	85	59	8	35	27	18	31	63	M6*0.75P	
SBT40-CK3-135	201.4	135	109	8	35	27	18	31	63	M6*0.75P	
SBT40-CK3-165	231.4	165	139	8	35	27	18	31	63	M6*0.75P	
SBT40-CK4-90	156.4	90	64	10	39	27	22	39	63	M8*0.75P	
SBT40-CK4-135	201.4	135	109	10	39	27	22	39	63	M8*0.75P	
SBT40-CK4-165	231.4	165	139	10	39	27	22	39	63	M8*0.75P	
SBT40-CK4-195	261.4	195	169	10	39	27	22	39	63	M8*0.75P	
SBT40-CK5-65	106.4	65	39	13	45	27	28	50	63	M10*1.0P	
SBT40-CK5-105	171.4	105	79	13	45	27	28	50	63	M10*1.0P	
SBT40-CK5-135	201.4	135	109	13	45	27	28	50	63	M10*1.0P	
SBT40-CK5-165	231.4	165	139	13	45	27	28	50	63	M10*1.0P	
SBT40-CK5-195	261.4	195	169	13	45	27	28	50	63	M10*1.0P	
SBT40-CK6-65	131.4	65	39	16	55	27	36	63	63	M12*1.0P	
SBT40-CK6-105	171.4	105	79	16	55	27	36	63	63	M12*1.0P	
SBT40-CK6-135	201.4	135	109	16	55	27	36	63	63	M12*1.0P	
SBT40-CK6-165	231.4	165	139	16	55	27	36	63	63	M12*1.0P	
SBT40-CK6-195	261.4	195	169	16	55	27	36	63	63	M12*1.0P	
SBT40-CK6-245	311.4	245	219	16	55	27	36	63	63	M12*1.0P	



CNC TOOLS
数控
刀柄

数控刀柄系列CNC TOOL SYSTEMS

SBT50-CK 镗头刀柄

SBT50-CK BORING HEAD SHANK



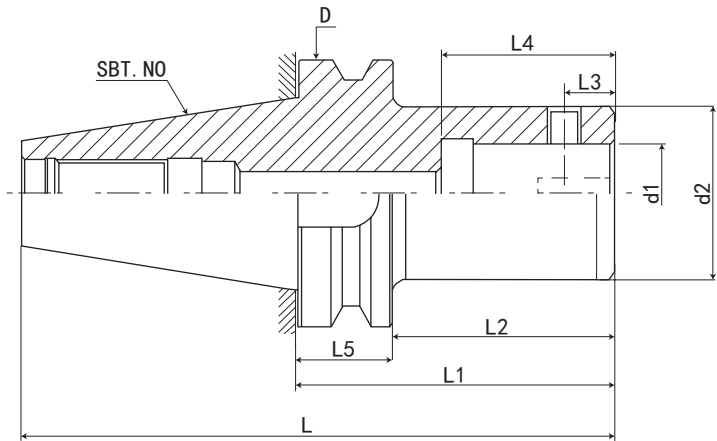
P.129



P.J39



P.130



规格 Model	L	L1	L2	L3	L4	L5	d1	d2	D	T	重量 KGS
SBT50-CK1-135	238.3	135	98.5	5.05	30	38	11	19	100	M4*0.5P	4.3
SBT50-CK2-90	193.3	90	53.5	6.62	31	38	14	24	100	M5*0.5P	
SBT50-CK2-115	218.3	115	78.5	6.62	31	38	14	24	100	M5*0.5P	4.1
SBT50-CK2-150	253.3	150	113.5	6.62	31	38	14	24	100	M5*0.5P	4.5
SBT50-CK3-95	198.3	95	58.5	8	35	38	18	31	100	M6*0.75P	
SBT50-CK3-125	228.3	125	88.5	8	35	38	18	31	100	M6*0.75P	4.3
SBT50-CK3-165	268.3	165	128.5	8	35	38	18	31	100	M6*0.75P	4.7
SBT50-CK3-205	308.3	205	168.5	8	35	38	18	31	100	M6*0.75P	4.9
SBT50-CK4-105	208.3	105	68.5	10	39	38	22	39	100	M8*0.75P	
SBT50-CK4-165	268.3	165	128.5	10	39	38	22	39	100	M8*0.75P	5.1
SBT50-CK4-225	328.3	225	188.5	10	39	38	22	39	100	M8*0.75P	
SBT50-CK4-255	358.3	255	218.5	10	39	38	22	39	100	M8*0.75P	5.6
SBT50-CK4-300	403.3	300	263.5	10	39	38	22	39	100	M8*0.75P	
SBT50-CK5-90	193.3	90	53.5	13	45	38	28	50	100	M10*1.0P	
SBT50-CK5-120	223.3	120	83.5	13	45	38	28	50	100	M10*1.0P	
SBT50-CK5-165	268.3	165	128.5	13	45	38	28	50	100	M10*1.0P	5.5
SBT50-CK5-205	308.3	205	168.5	13	45	38	28	50	100	M10*1.0P	5.8
SBT50-CK5-240	343.3	240	203.5	13	45	38	28	50	100	M10*1.0P	
SBT50-CK5-285	388.3	285	248.5	13	45	38	28	50	100	M10*1.0P	
SBT50-CK5-320	423.3	320	283.5	13	45	38	28	50	100	M10*1.0P	
SBT50-CK6-95	198.3	95	58.5	16	55	38	36	63	100	M12*1.0P	4.9
SBT50-CK6-165	268.3	165	128.5	16	55	38	36	63	100	M12*1.0P	
SBT50-CK6-240	343.3	240	203.5	16	55	38	36	63	100	M12*1.0P	
SBT50-CK6-300	403.3	300	263.5	16	55	38	36	63	100	M12*1.0P	9.5
SBT50-CK6-360	463.3	360	323.5	16	55	38	36	63	100	M12*1.0P	10.5
SBT50-CK7-150	253.3	150	113.5	19.1	55	38	46	90	100	M20*1.5P	
SBT50-CK7-210	313.3	210	173.5	19.1	55	38	46	90	100	M20*1.5P	
SBT50-CK7-300	403.3	300	263.5	19.1	55	38	46	90	100	M20*1.5P	
SBT50-CK7-360	463.3	360	323.5	19.1	55	38	46	90	100	M20*1.5P	

SBT-MTA 带扁尾莫氏刀柄

SBT-MTA TAPER ADAPTER (MORSE)



P.129

FIG. 1

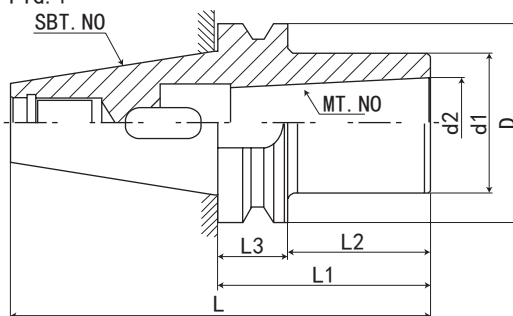
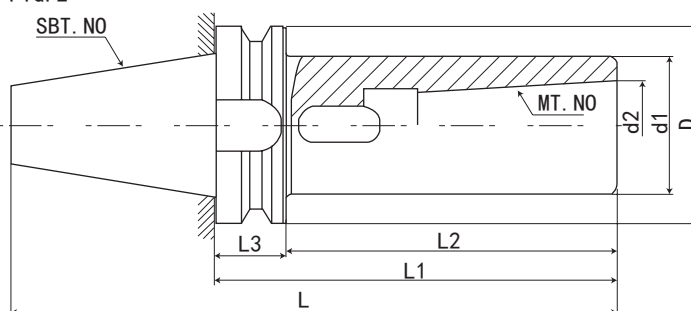


FIG. 2



规格 Model	L	L1	L2	L3	D	d1	d2	FIG	夹持范围 Range	重量 KGS
SBT30-MTA1-60	109.3	60	39	22	46	25	12.065	1	Φ2-Φ14	
SBT30-MTA2-60	109.3	60	39	22	46	32	17.18	1	Φ14-Φ23	
SBT30-MTA3-80	129.3	80	59	22	46	40	23.825	1	Φ23-Φ32	
SBT40-MTA1-45	111.4	45	19	27	63	25	12.065	1	Φ2-Φ14	
SBT40-MTA1-120	186.4	120	94	27	63	25	12.065	2	Φ2-Φ14	
SBT40-MTA2-45	111.4	45	19	27	63	32	17.18	1	Φ14-Φ23	
SBT40-MTA2-120	186.4	120	94	27	63	32	17.18	2	Φ14-Φ23	
SBT40-MTA3-75	141.4	75	49	27	63	40	23.825	1	Φ23-Φ32	
SBT40-MTA3-135	201.4	135	109	27	63	40	23.825	2	Φ23-Φ32	
SBT40-MTA4-90	156.4	90	64	27	63	48	31.267	1	Φ32-Φ50	
SBT40-MTA4-180	246.4	180	154	27	63	48	31.267	2	Φ32-Φ50	
SBT50-MTA1-45	148.3	45	8.5	38	100	25	12.065	1	Φ2-Φ14	
SBT50-MTA1-120	223.3	120	83.5	38	100	25	12.065	2	Φ2-Φ14	4.3
SBT50-MTA1-180	283.3	180	143.5	38	100	25	12.065	2	Φ2-Φ14	
SBT50-MTA1-210	313.3	210	173.5	38	100	25	12.065	2	Φ2-Φ14	
SBT50-MTA2-60	163.3	60	23.5	38	100	32	17.18	1	Φ14-Φ23	
SBT50-MTA2-135	238.3	135	98.5	38	100	32	17.18	2	Φ14-Φ23	4.5
SBT50-MTA2-180	283.3	180	143.5	38	100	32	17.18	2	Φ14-Φ23	
SBT50-MTA2-210	313.3	210	173.5	38	100	32	17.18	2	Φ14-Φ23	
SBT50-MTA2-250	353.3	250	213.5	38	100	32	17.18	2	Φ14-Φ23	
SBT50-MTA3-75	178.3	75	38.5	38	100	40	23.825	1	Φ23-Φ32	4.1
SBT50-MTA3-150	253.3	150	113.5	38	100	40	23.825	2	Φ23-Φ32	
SBT50-MTA3-180	283.3	180	143.5	38	100	40	23.825	2	Φ23-Φ32	
SBT50-MTA3-210	313.3	210	173.5	38	100	40	23.825	2	Φ23-Φ32	
SBT50-MTA3-250	353.3	250	213.5	38	100	40	23.825	2	Φ23-Φ32	
SBT50-MTA3-300	403.3	300	263.5	38	100	40	23.825	2	Φ23-Φ32	
SBT50-MTA4-75	178.3	75	38.5	38	100	48	31.267	1	Φ32-Φ50	4
SBT50-MTA4-180	283.3	180	143.5	38	100	48	31.267	2	Φ32-Φ50	
SBT50-MTA4-210	313.3	210	173.5	38	100	48	31.267	2	Φ32-Φ50	
SBT50-MTA4-250	353.3	250	213.5	38	100	48	31.267	2	Φ32-Φ50	
SBT50-MTA4-300	403.3	300	263.5	38	100	48	31.267	2	Φ32-Φ50	
SBT50-MTA5-115	218.3	115	78.5	38	100	65	44.399	1	Φ50-Φ75	
SBT50-MTA5-210	313.3	210	173.5	38	100	66	45.399	2	Φ50-Φ76	
SBT50-MTA5-250	353.3	250	213.5	38	100	67	46.399	2	Φ50-Φ77	
SBT50-MTA6-200	303.3	200	163.5	38	100	85	63.348	1	Φ75-Φ100	
SBT50-MTA6-280	383.3	280	243.5	38	100	85	63.348	2	Φ75-Φ100	

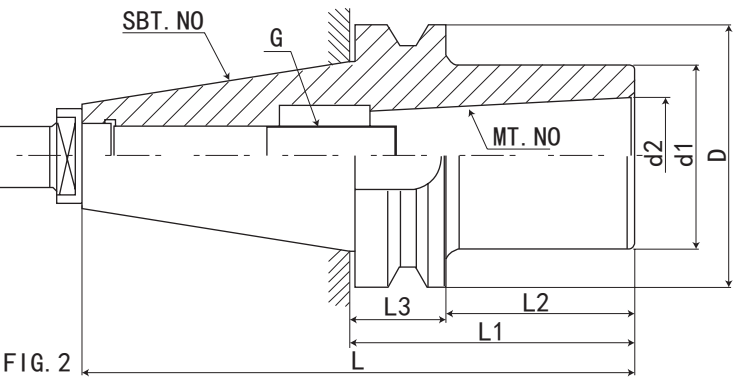
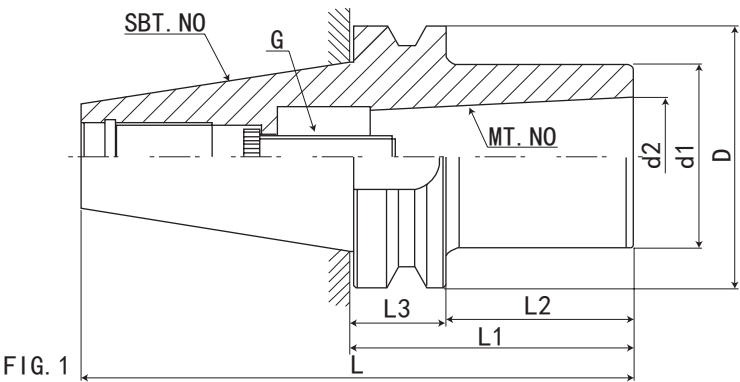


CNC TOOLS
数控刀柄

数控刀柄系列CNC TOOL SYSTEMS

SBT-MTB 无扁尾莫氏刀柄

SBT-MTB MORSE TAP HOLDER

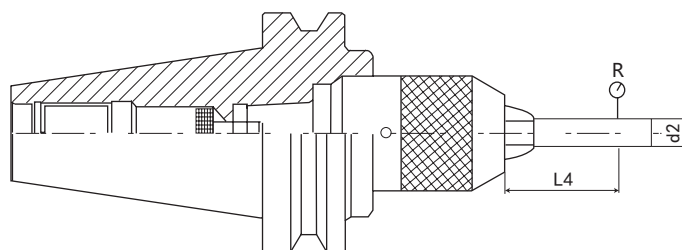
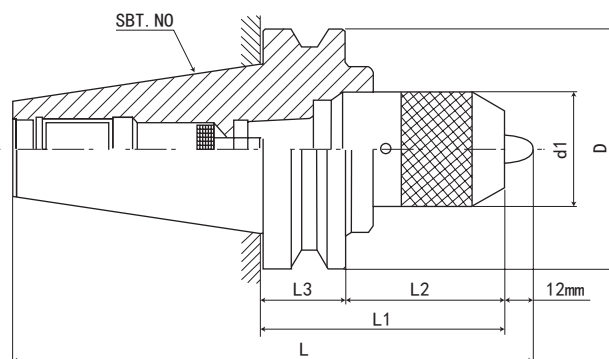


P.129

规格 Model	L	L1	L2	L3	D	d1	d2	FIG	夹持范围 Range	重量 KGS
SBT30-MTB1-60	109.3	60	39	22	46	25	12.065	1	Φ10-Φ14	
SBT30-MTB2-60	109.3	60	39	22	46	32	17.18	1	Φ16-Φ22	
SBT30-MTB3-80	129.3	80	59	22	46	40	23.825	1	Φ24-Φ32	
SBT40-MTB1-45	111.4	45	19	27	63	25	12.065	1	Φ10-Φ14	
SBT40-MTB1-120	186.4	120	94	27	63	25	12.065	2	Φ10-Φ14	
SBT40-MTB2-45	111.4	45	19	27	63	32	17.18	1	Φ16-Φ22	
SBT40-MTB2-120	186.4	120	94	27	63	32	17.18	2	Φ16-Φ22	
SBT40-MTB3-75	141.4	75	49	27	63	40	23.825	1	Φ24-Φ32	
SBT40-MTB3-135	201.4	135	109	27	63	40	23.825	2	Φ24-Φ32	
SBT40-MTB4-90	156.4	90	64	27	63	48	31.267	1	Φ32-Φ50	
SBT40-MTB4-180	246.4	180	154	27	63	48	31.267	2	Φ32-Φ50	
SBT50-MTB1-45	148.3	45	8.5	38	100	25	12.065	1	Φ10-Φ14	
SBT50-MTB1-120	223.3	120	83.5	38	100	25	12.065	2	Φ10-Φ14	
SBT50-MTB2-60	163.3	60	23.5	38	100	32	17.18	1	Φ16-Φ22	
SBT50-MTB2-135	238.3	135	98.5	38	100	32	17.18	2	Φ16-Φ22	
SBT50-MTB3-75	178.3	75	38.5	38	100	40	23.825	1	Φ24-Φ32	
SBT50-MTB3-150	253.3	150	113.5	38	100	40	23.825	2	Φ24-Φ32	
SBT50-MTB4-75	178.3	75	38.5	38	100	48	31.267	1	Φ32-Φ50	
SBT50-MTB4-180	283.3	180	143.5	38	100	48	31.267	2	Φ32-Φ50	
SBT50-MTB5-115	218.3	115	78.5	38	100	65	44.399	1	Φ40-Φ75	
SBT50-MTB5-210	313.3	210	173.5	38	100	66	45.399	2	Φ40-Φ75	

SBT-APU 一体式钻夹头刀柄

SBT-APU DRILL CHUCK HOLDER



P.131

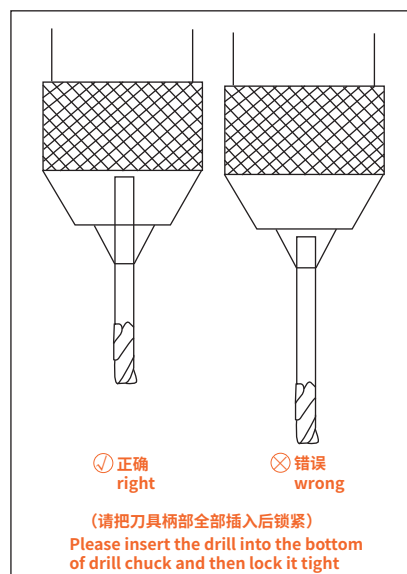


P.129



P.158

规格 / 型号 Model	L	L1	L2	L3	d1	d2	D	R	夹持范围 Range	重量 KGS
SBT30-APU13-110	159.3	110	89	22	50	13	46	0.08	1-13mm	1.85
SBT30-APU16-115	164.3	115	94	22	57	16	46	0.08	1-16mm	2.18
SBT40-APU13-110	176.4	110	84	27	50	13	63	0.08	1-13mm	2
SBT40-APU16-110	176.4	110	84	27	57	16	63	0.08	1-16mm	2.35
SBT50-APU13-130	233.3	130	93.5	38	50	13	100	0.08	1-13mm	5.5
SBT50-APU13-180	283.3	180	143.5	38	50	13	100	0.08	1-13mm	5.85
SBT50-APU16-130	233.3	130	93.5	38	57	16	100	0.08	1-16mm	5.35
SBT50-APU16-180	283.3	180	143.5	38	57	16	100	0.08	1-16mm	5.85



特点:

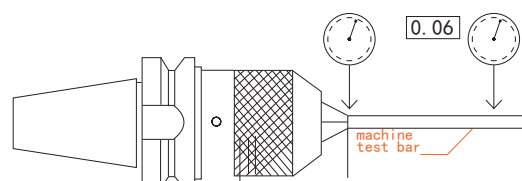
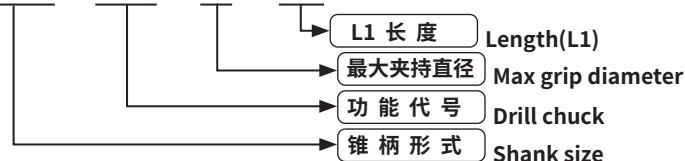
注:

- ◎ 一体式结构, 减少了连接误差精度, 内部用螺纹结构, 就不会出现夹头脱落现象
- ◎ 用于钻头、铰刀等夹持, 不可用于丝锥和铣刀夹持
- ◎ 一体刀柄缩短刀具长度, 提高加工精度, 增加使用寿命
- ◎ 有自锁功能, 附带专用扳手, 请勿用其它工具
- ◎ APU 偏摆精度为 0.06, 如需更高精度要求请使用 ER 或 SK 系列
- ◎ 扳手、拉钉须另行购买

Features:

- ◎ The shank and keyless drill chuck are combined together so as to avoid the drill chuck slipping out for heavy-duty and high speed cutting and improve the precision.
- ◎ Not be used for gripping draw bolt and milling tools, instead of drill bit and reamer.
- ◎ APU drill chuck shorten the length while length the working life of tool.
- ◎ Each APU drill chuck attached 1pc APU wrench.
- ◎ The APU leaning precision is 0.06mm, like the need high accuracy request, please use ER or the SK serie.
- ◎ The spanner、pull stud must purchase alone.

SBT40 - APU - 13 - 110

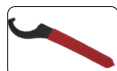


CNC TOOLS
数控刀柄

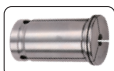
数控刀柄系列 CNC TOOL SYSTEMS

SBT-C 型高精度强力刀柄

SBT-C FORCE MILLING CHUCK



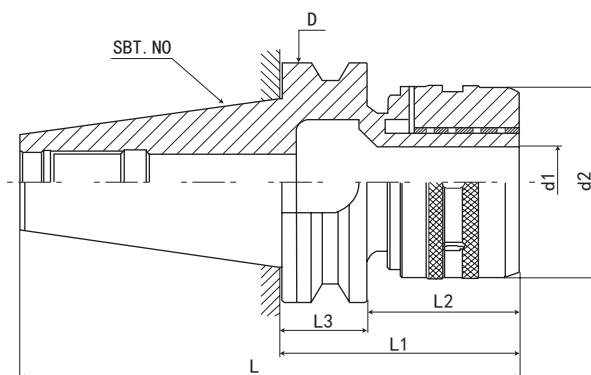
P.131



P.116



P.129



规格 / 型号 Model	L	L1	L2	L3	D	d1	d2	夹持范围 Range
SBT30-C20-80	129.3	80	59	22	46	20	58	3 4 5 6 8 10 12 14 16 20
SBT30-C25-100	149.3	100	79	22	46	25	63	3 4 5 6 8 10 12 14 16 18 20 25
SBT30-C32-105	154.3	105	84	22	46	32	73	3 4 5 6 8 10 12 14 16 18 20 22 24 25 32
SBT40-C20-100	166.4	100	74	27	63	20	58	3 4 5 6 8 10 12 14 16 20
SBT40-C25-100	166.4	100	74	27	63	25	63	3 4 5 6 8 10 12 14 16 18 20 25
SBT40-C25-135	201.4	135	109	27	63	25	63	3 4 5 6 8 10 12 14 16 18 20 25
SBT40-C32-105	171.4	105	79	27	63	32	73	3 4 5 6 8 10 12 14 16 18 20 22 24 25 32
SBT40-C32-135	201.4	135	109	27	63	32	73	3 4 5 6 8 10 12 14 16 18 20 22 24 25 32
SBT40-C32-165	231.4	165	139	27	63	32	73	3 4 5 6 8 10 12 14 16 18 20 22 24 25 32
SBT40-C32-200	266.4	200	174	27	63	32	73	3 4 5 6 8 10 12 14 16 18 20 22 24 25 32
SBT50-C25-110	213.3	110	73.5	38	100	25	63	3 4 5 6 8 10 12 14 16 18 20 25
SBT50-C25-135	238.3	135	98.5	38	100	25	63	3 4 5 6 8 10 12 14 16 18 20 25
SBT50-C25-165	268.3	165	128.5	38	100	25	63	3 4 5 6 8 10 12 14 16 18 20 25
SBT50-C32-110	213.3	110	73.5	38	100	32	73	3 4 5 6 8 10 12 14 16 18 20 22 24 25 32
SBT50-C32-135	238.3	135	98.5	38	100	32	73	3 4 5 6 8 10 12 14 16 18 20 22 24 25 32
SBT50-C32-165	268.3	165	128.5	38	100	32	73	3 4 5 6 8 10 12 14 16 18 20 22 24 25 32
SBT50-C32-200	303.3	200	163.5	38	100	32	73	3 4 5 6 8 10 12 14 16 18 20 22 24 25 32
SBT50-C32-250	353.3	250	213.5	38	100	32	73	3 4 5 6 8 10 12 14 16 18 20 22 24 25 32
SBT50-C32-300	403.3	300	263.5	38	100	32	73	3 4 5 6 8 10 12 14 16 18 20 22 24 25 32
SBT50-C42-135	238.3	135	98.5	38	100	42	88	3 4 5 6 8 10 12 14 16 18 20 22 24 25 28 30 32 34 36 42
SBT50-C42-165	268.3	165	128.5	38	100	42	88	3 4 5 6 8 10 12 14 16 18 20 22 24 25 28 30 32 34 36 42
SBT50-C42-200	303.3	200	163.5	38	100	42	88	3 4 5 6 8 10 12 14 16 18 20 22 24 25 28 30 32 34 36 42

特点:

高速、高精度、高寿命直柄刀具系列

◎材质: 20CrMnTi/15CrMn

◎硬度: HRC58-60, 渗碳深度 > 0.8mm

◎锥柄公差等级: ≤ AT3

◎刀柄内孔分割了六槽, 以防止刀具转动, 增大夹持力

◎采用特殊材料制作滚针轴承保持架, 延长使用寿命, 增强夹紧力

◎具有夹持力大, 定点精度高, 特别适用于强力切削

◎可提供两种外观: 光饰或涂层处理

◎内孔多次研磨, 可达 Ra0.4, 起到镜面效果

◎外圆及端面多次研磨, 可达 Ra0.4, 起到镜面效果

◎表面“环保”特殊涂层处理, 提高表面硬度、耐磨性, 提高清洁度, 精度更稳定, 表面更光滑, 防锈、防腐蚀效果更好, 手感更舒适, 外观更美观

◎扳手、拉钉、筒夹须另行购买

Features:

High speed, high accuracy, high durability C-STRAIGHT TOOL SERIES

◎ Material: 20CrMnTi/15CrMn;

◎ Hardness: HRC58-60, Carbon depth > 0.8 ◎ Tolerance class: ≤ AT3

◎ Inner hole of the shank divide into 6 troughs to prevent the insert remove, increase the grasp force

◎ Ball bearing cage is made of special material, improve the endurance, enhance the grasp force

◎ Grasp force strong, centering accuracy high, suit to heavy cutting

◎ Two kinds looks provide: polishing or chemical nickel-plating processing;

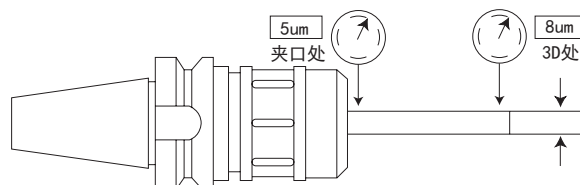
◎ Inner hole grinding for many times, so as to reach Ra0.4, has a mirror effect;

◎ End and the cylindrical are grinding for many times, can reach Ra0.4, has a mirror effect;

◎ Surface "environmental protection", special coating surface treatment, improve the hardness and endurance of the surface, cleanliness better, accuracy stable, surface more smooth, antirust, feel comfortable, appearance nice.

◎ The spanner, pull stud chuck must purchase alone.

SBT30 - C20 - 80

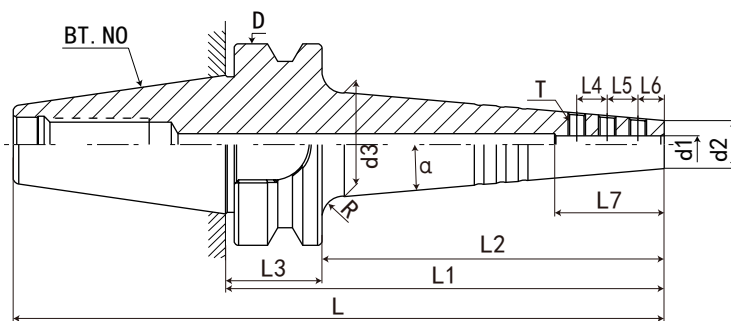


SBT-SLD 小径侧固刀柄

SBT-SLD SMALL DIAMETER SIDE LOCK TOOL HOLDER



P.129



规格 Model	L	L1	L2	L3	L4	L5	L6	L7	D	d1	d2	d3	T	α	R	重量 KGS
SBT30-SLD3-80-A5	128.4	80	58	22	6	6	6	18	46	3	9	18.5	M3.5*3*0.35P*T6	5°	5	
SBT30-SLD3-100-A5	148.4	100	78	22	6	6	6	18	46	3	9	22	M3.5*3*0.35P*T6	5°	5	
SBT30-SLD4-80-A5	128.4	80	58	22	7	7	6	20	46	4	11	20.5	M4*2.8*0.5P*H2	5°	5	
SBT30-SLD4-100-A5	148.4	100	78	22	7	7	6	20	46	4	11	24	M4*2.8*0.5P*H2	5°	5	
SBT30-SLD6-80-A5	128.4	80	58	22	8	8	6	22	46	6	13	22.5	M5*4*0.5P*H2.5	5°	5	
SBT30-SLD6-100-A5	148.4	100	78	22	8	8	6	22	46	6	13	25.5	M5*4*0.5P*H2.5	5°	5	
SBT30-SLD8-80-A5	128.4	80	58	22	10	10	7	27	46	8	15	24.5	M5*4*0.5P*H2.5	5°	5	
SBT30-SLD8-100-A5	148.4	100	78	22	10	10	7	27	46	8	15	28	M5*4*0.5P*H2.5	5°	5	

SLD 侧固式刀柄延长杆专用螺丝

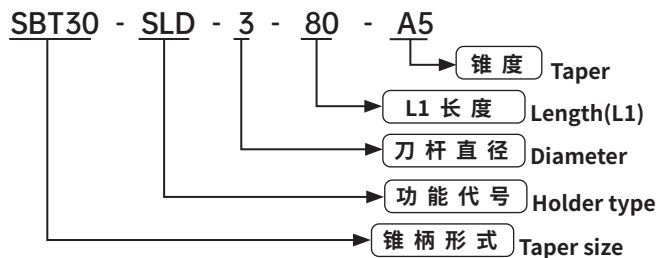
SLD side fixed extension rod special screw

规格 Model	使用孔径 D Using aperture
M3.5×3×P0.35×T6	D3
M4×2.8×P0.5×T8	D4
M4×4×P0.5×T8	D4
M5×3.5×P0.5×T10	D6
M5×5×P0.5×T10	D6 D8 D10
M6×4×P0.75×T15	D12
M6×6×P0.75×T15	D12
M8×5×P0.75×L4	D16 D20
M4×2.8×P0.5×H2	D4
M5×4×P0.5×H2.5	D6 D8 D10
M6×4×P0.75×H3	D12
M6×5×P0.75×H3	D12

备注：梅花扳手“T”，六角扳手“H”

六角扳手：更大的锁紧力（需注意控制尺寸）

梅花扳手：使用更方便

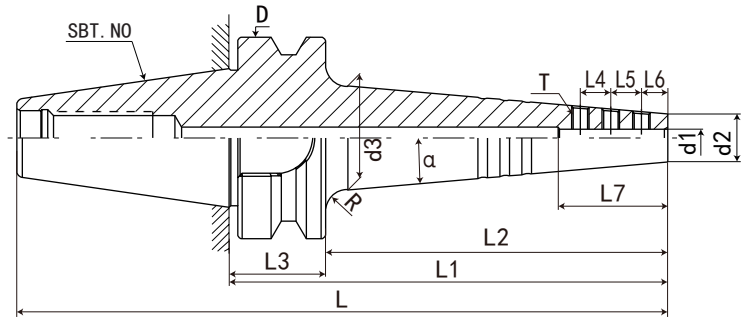


CNC TOOLS
数控
刀柄

数控刀柄系列 CNC TOOL SYSTEMS

SBT40-SLD 小径侧固刀柄

SBT40-SLD SMALL DIAMETER SIDE LOCK TOOL HOLDER

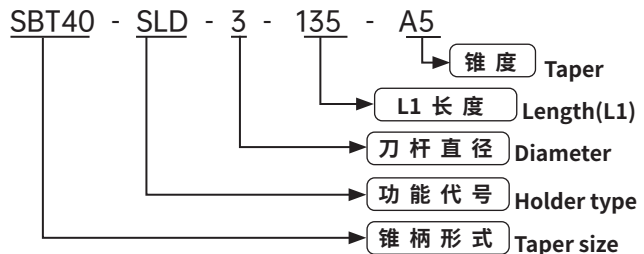


规格 Model	L	L1	L2	L3	L4	L5	L6	L7	D	d1	d2	d3	T	α	R	重量 KGS
SBT40-SLD3-135-A5	200.4	135	108	27	6	6	6	18	63	3	9	27	M3.5*3*0.35P*T6	5°	5	
SBT40-SLD4-135-A5	200.4	135	108	27	7	7	6	20	63	4	11	29	M4*2.8*0.5P*H2	5°	5	
SBT40-SLD6-135-A5	200.4	135	108	27	8	8	6	22	63	6	13	31	M5*4*0.5P*H2.5	5°	5	
SBT40-SLD6-150-A5	215.4	150	123	27	8	8	6	22	63	6	13	33.5	M5*4*0.5P*H2.5	5°	5	
SBT40-SLD6-200-A5	265.4	200	173	27	8	8	6	22	63	6	13	41.5	M5*4*0.5P*H2.5	5°	5	
SBT40-SLD8-135-A5	200.4	135	108	27	10	10	7	27	63	8	15	33	M5*4*0.5P*H2.5	5°	5	
SBT40-SLD8-150-A5	215.4	150	123	27	10	10	7	27	63	8	15	35.5	M5*4*0.5P*H2.5	5°	5	
SBT40-SLD8-200-A5	265.4	200	173	27	10	10	7	27	63	8	15	43.5	M5*4*0.5P*H2.5	5°	5	
SBT40-SLD10-135-A5	200.4	135	108	27	10	10	10	35	63	10	17	35	M5*4*0.5P*H2.5	5°	5	
SBT40-SLD10-150-A5	215.4	150	123	27	10	10	10	35	63	10	17	37.5	M5*4*0.5P*H2.5	5°	5	
SBT40-SLD10-200-A5	265.4	200	173	27	10	10	10	35	63	10	17	45.5	M5*4*0.5P*H2.5	5°	5	
SBT40-SLD12-135-A5	200.4	135	108	27	10	10	10	45	63	12	22	40	M6*5*0.75P*H3	5°	5	
SBT40-SLD12-150-A5	215.4	150	123	27	10	10	10	45	63	12	22	42.5	M6*5*0.75P*H3	5°	5	
SBT40-SLD12-200-A5	265.4	200	173	27	10	10	10	45	63	12	22	50.5	M6*5*0.75P*H3	5°	5	
SBT40-SLD6-150-A3	215.4	150	123	27	8	8	6	22	63	6	13	25.5	M5*4*0.5P*H2.5	3°	5	
SBT40-SLD6-200-A3	265.4	200	173	27	8	8	6	22	63	6	13	30.5	M5*4*0.5P*H2.5	3°	5	
SBT40-SLD8-150-A3	215.4	150	123	27	10	10	7	27	63	8	15	27.5	M5*4*0.5P*H2.5	3°	5	
SBT40-SLD8-200-A3	265.4	200	173	27	10	10	7	27	63	8	15	32.5	M5*4*0.5P*H2.5	3°	5	
SBT40-SLD10-150-A3	215.4	150	123	27	10	10	10	35	63	10	17	29.5	M5*4*0.5P*H2.5	3°	5	
SBT40-SLD10-200-A3	265.4	200	173	27	10	10	10	35	63	10	17	34.5	M5*4*0.5P*H2.5	3°	5	

SLD 侧固式刀柄延长杆专用螺丝：

SLD side fixed extension rod special screw

规格 Model	使用孔径 D Using aperture
M3.5×3×P0.35×T6	D3
M4×2.8×P0.5×T8	D4
M4×4×P0.5×T8	D4
M5×3.5×P0.5×T10	D6
M5×5×P0.5×T10	D6 D8 D10
M6×4×P0.75×T15	D12
M6×6×P0.75×T15	D12
M8×5×P0.75×L4	D16 D20
M4×2.8×P0.5×H2	D4
M5×4×P0.5×H2.5	D6 D8 D10
M6×4×P0.75×H3	D12
M6×5×P0.75×H3	D12



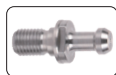
备注：梅花扳手“T”，六角扳手“H”

六角扳手：更大的锁紧力（需注意控制尺寸）

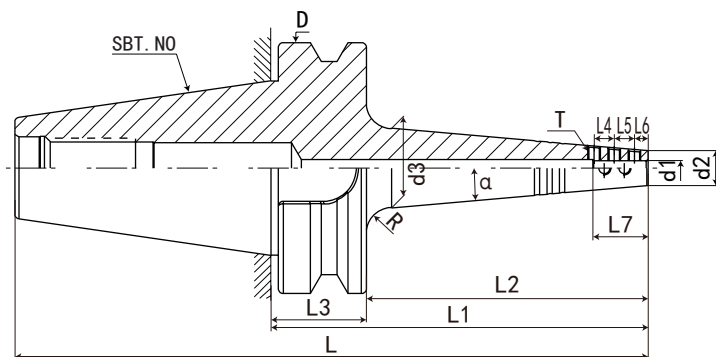
梅花扳手：使用更方便

SBT50-SLD 小径侧固刀柄

SBT50-SLD SMALL DIAMETER SIDE LOCK TOOL HOLDER



P.129



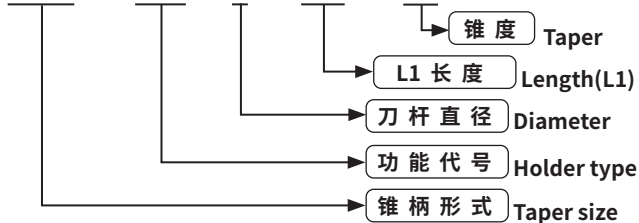
规格 Model	L	L1	L2	L3	L4	L5	L6	L7	D	d1	d2	d3	T	α	R	重量 KGS
SBT50-SLD4-150-A5	251.8	150	112	38	7	7	6	20	100	4	12	30	M4*2.8*0.5P*H2	5°	10	
SBT50-SLD4-200-A5	301.8	200	162	38	7	7	6	20	100	4	12	38.5	M4*2.8*0.5P*H2	5°	10	
SBT50-SLD4-250-A5	351.8	250	212	38	7	7	6	20	100	4	12	47.5	M4*2.8*0.5P*H2	5°	10	
SBT50-SLD4-300-A5	401.8	300	262	38	7	7	6	20	100	4	12	56	M4*2.8*0.5P*H2	5°	10	
SBT50-SLD6-150-A5	251.8	150	112	38	8	8	6	22	100	6	14	32	M5*4*0.5P*H2.5	5°	10	
SBT50-SLD6-200-A5	301.8	200	162	38	8	8	6	22	100	6	14	40.5	M5*4*0.5P*H2.5	5°	10	
SBT50-SLD6-250-A5	351.8	250	212	38	8	8	6	22	100	6	14	49.5	M5*4*0.5P*H2.5	5°	10	
SBT50-SLD6-300-A5	401.8	300	262	38	8	8	6	22	100	6	14	58	M5*4*0.5P*H2.5	5°	10	
SBT50-SLD8-150-A5	251.8	150	112	38	10	10	7	27	100	8	16	34	M5*4*0.5P*H2.5	5°	10	
SBT50-SLD8-200-A5	301.8	200	162	38	10	10	7	27	100	8	16	42.5	M5*4*0.5P*H2.5	5°	10	
SBT50-SLD8-250-A5	351.8	250	212	38	10	10	7	27	100	8	16	51.5	M5*4*0.5P*H2.5	5°	10	
SBT50-SLD8-300-A5	401.8	300	262	38	10	10	7	27	100	8	16	60	M5*4*0.5P*H2.5	5°	10	
SBT50-SLD10-150-A5	251.8	150	112	38	10	10	10	35	100	10	18	36	M5*4*0.5P*H2.5	5°	10	
SBT50-SLD10-200-A5	301.8	200	162	38	10	10	10	35	100	10	18	44.5	M5*4*0.5P*H2.5	5°	10	
SBT50-SLD10-250-A5	351.8	250	212	38	10	10	10	35	100	10	18	53.5	M5*4*0.5P*H2.5	5°	10	
SBT50-SLD10-300-A5	401.8	300	262	38	10	10	10	35	100	10	18	62	M5*4*0.5P*H2.5	5°	10	
SBT50-SLD12-150-A5	251.8	150	112	38	10	10	10	45	100	12	22	40	M6*5*0.75P*H3	5°	10	
SBT50-SLD12-200-A5	301.8	200	162	38	10	10	10	45	100	12	22	48.5	M6*5*0.75P*H3	5°	10	
SBT50-SLD12-250-A5	351.8	250	212	38	10	10	10	45	100	12	22	57.5	M6*5*0.75P*H3	5°	10	
SBT50-SLD12-300-A5	401.8	300	262	38	10	10	10	45	100	12	22	66	M6*5*0.75P*H3	5°	10	
SBT50-SLD16-150-A5	251.8	150	112	38	12	12	10	50	100	16	26	44	M8*5*0.75P*L4	5°	10	
SBT50-SLD16-200-A5	301.8	200	162	38	12	12	10	50	100	16	26	52.5	M8*5*0.75P*L4	5°	10	
SBT50-SLD16-250-A5	351.8	250	212	38	12	12	10	50	100	16	26	61.5	M8*5*0.75P*L4	5°	10	
SBT50-SLD16-300-A5	401.8	300	262	38	12	12	10	50	100	16	26	70	M8*5*0.75P*L4	5°	10	
SBT50-SLD20-150-A5	251.8	150	112	38	12	12	10	55	100	20	30	48	M8*5*0.75P*L4	5°	10	
SBT50-SLD20-200-A5	301.8	200	162	38	12	12	10	55	100	20	30	56.5	M8*5*0.75P*L4	5°	10	
SBT50-SLD20-250-A5	351.8	250	212	38	12	12	10	55	100	20	30	65.5	M8*5*0.75P*L4	5°	10	
SBT50-SLD20-300-A5	401.8	300	262	38	12	12	10	55	100	20	30	74	M8*5*0.75P*L4	5°	10	

SLD 侧固式刀柄延长杆专用螺丝：

SLD side fixed extension rod special screw

规格 Model	使用孔径 D Using aperture
M3.5×3×P0.35×T6	D3
M4×2.8×P0.5×T8	D4
M4×4×P0.5×T8	D4
M5×3.5×P0.5×T10	D6
M5×5×P0.5×T10	D6 D8 D10
M6×4×P0.75×T15	D12
M6×6×P0.75×T15	D12
M8×5×P0.75×L4	D16 D20
M4×2.8×P0.5×H2	D4
M5×4×P0.5×H2.5	D6 D8 D10
M6×4×P0.75×H3	D12
M6×5×P0.75×H3	D12

SBT50 - SLD - 4 - 150 - A5



备注：梅花扳手“T”，六角扳手“H”
六角扳手：更大的锁紧力（需注意控制尺寸）
梅花扳手：使用更方便

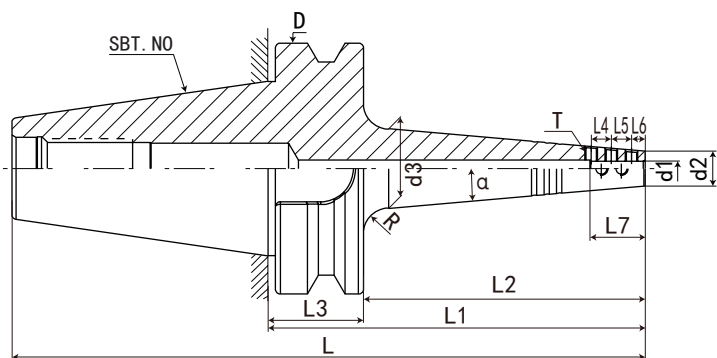
数控刀柄系列 CNC TOOL SYSTEMS

SBT50-SLD 小径侧固刀柄

SBT50-SLD SMALL DIAMETER SIDE LOCK TOOL HOLDER



P.129

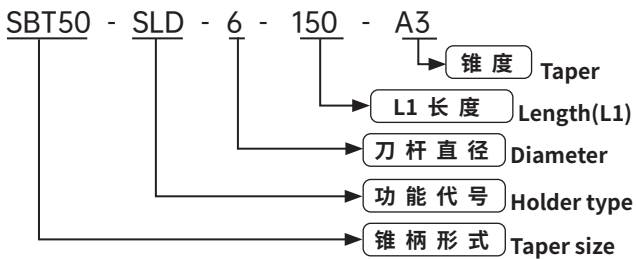


规格 Model	L	L1	L2	L3	L4	L5	L6	L7	D	d1	d2	d3	T	α	R	重量 KGS
SBT50-SLD6-150-A3	251.8	150	112	38	8	8	6	22	100	6	14	25	M5*4*0.5P*H2.5	3°	10	
SBT50-SLD6-200-A3	301.8	200	162	38	8	8	6	22	100	6	14	30	M5*4*0.5P*H2.5	3°	10	
SBT50-SLD6-250-A3	351.8	250	212	38	8	8	6	22	100	6	14	35	M5*4*0.5P*H2.5	3°	10	
SBT50-SLD6-300-A3	401.8	300	262	38	8	8	6	22	100	6	14	40	M5*4*0.5P*H2.5	3°	10	
SBT50-SLD8-150-A3	251.8	150	112	38	10	10	7	27	100	8	16	27	M5*4*0.5P*H2.5	3°	10	
SBT50-SLD8-200-A3	301.8	200	162	38	10	10	7	27	100	8	16	32	M5*4*0.5P*H2.5	3°	10	
SBT50-SLD8-250-A3	351.8	250	212	38	10	10	7	27	100	8	16	37	M5*4*0.5P*H2.5	3°	10	
SBT50-SLD8-300-A3	401.8	300	262	38	10	10	7	27	100	8	16	42	M5*4*0.5P*H2.5	3°	10	
SBT50-SLD10-150-A3	251.8	150	112	38	10	10	10	35	100	10	18	29	M5*4*0.5P*H2.5	3°	10	
SBT50-SLD10-200-A3	301.8	200	162	38	10	10	10	35	100	10	18	34	M5*4*0.5P*H2.5	3°	10	
SBT50-SLD10-250-A3	351.8	250	212	38	10	10	10	35	100	10	18	39	M5*4*0.5P*H2.5	3°	10	
SBT50-SLD10-300-A3	401.8	300	262	38	10	10	10	35	100	10	18	44	M5*4*0.5P*H2.5	3°	10	
SBT50-SLD12-150-A3	251.8	150	112	38	10	10	10	45	100	12	22	33	M6*5*0.75P*H3	3°	10	
SBT50-SLD12-200-A3	301.8	200	162	38	10	10	10	45	100	12	22	38	M6*5*0.75P*H3	3°	10	
SBT50-SLD12-250-A3	351.8	250	212	38	10	10	10	45	100	12	22	43	M6*5*0.75P*H3	3°	10	
SBT50-SLD12-300-A3	401.8	300	262	38	10	10	10	45	100	12	22	48	M6*5*0.75P*H3	3°	10	

SLD 侧固式刀柄延长杆专用螺丝：

SLD side fixed extension rod special screw

规格 Model	使用孔径 D Using aperture
M3.5×3×P0.35×T6	D3
M4×2.8×P0.5×T8	D4
M4×4×P0.5×T8	D4
M5×3.5×P0.5×T10	D6
M5×5×P0.5×T10	D6 D8 D10
M6×4×P0.75×T15	D12
M6×6×P0.75×T15	D12
M8×5×P0.75×L4	D16 D20
M4×2.8×P0.5×H2	D4
M5×4×P0.5×H2.5	D6 D8 D10
M6×4×P0.75×H3	D12
M6×5×P0.75×H3	D12



备注：梅花扳手“T”，六角扳手“H”

六角扳手：更大的锁紧力（需注意控制尺寸）

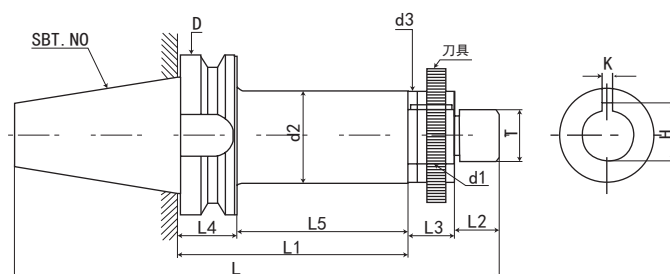
梅花扳手：使用更方便

SBT-SCA 侧铣刀柄

SBT-SCA SIDE CUTTER ADAPTET



P.129



规格 / 型号 Model	L	L1	L2	L3	L4	L5	D	d1	d2	d3	k	H	T	重量 KGS
SBT30-SCA10-60	109.3	60	12	30	22	39	46	10	18	18	-	-	M8*1.25P	0.8
SBT30-SCA16-60	109.3	60	16	30	22	39	46	16	26	26	4	17.7	M14*1.5P	1
SBT30-SCA22-60	109.3	60	22	30	22	39	46	22	34	34	6	24.3	M20*1.5P	1.2
SBT30-SCA27-75	124.3	75	28	30	22	54	46	27	41	41	7	30	M24*1.5P	1.4
SBT40-SCA16-60	172.4	60	16	30	27	34	63	16	26	26	4	17.7	M14*1.5P	1.5
SBT40-SCA22-75	193.4	75	22	30	27	49	63	22	34	34	6	24.3	M20*1.5P	1.6
SBT40-SCA22-120	238.4	120	22	30	27	94	63	22	34	34	6	24.3	M20*1.5P	1.7
SBT40-SCA27-75	199.4	75	28	30	27	49	63	27	41	41	7	30	M24*1.5P	2
SBT40-SCA27-120	244.4	120	28	30	27	94	63	27	41	41	7	30	M24*1.5P	2.1
SBT40-SCA32-90	218.4	90	32	30	27	64	63	32	47	47	8	35	M30*1.5P	2.5
SBT40-SCA32-180	308.4	180	32	30	27	154	63	32	47	47	8	35	M30*1.5P	2.6
SBT50-SCA22-90	245.3	90	22	30	38	53.5	100	22	34	34	6	24.3	M20*1.5P	1.7
SBT50-SCA22-135	290.3	135	22	30	38	98.5	100	22	34	34	6	24.3	M20*1.5P	2
SBT50-SCA27-90	251.3	90	28	30	38	53.5	100	27	41	41	7	30	M24*1.5P	2
SBT50-SCA27-135	296.3	135	28	30	38	98.5	100	27	41	41	7	30	M24*1.5P	2.4
SBT50-SCA32-90	255.3	90	32	30	38	53.5	100	32	47	47	8	35	M30*1.5P	2.6
SBT50-SCA32-135	300.3	135	32	30	38	98.5	100	32	47	47	8	35	M30*1.5P	4.4
SBT50-SCA40-90	263.3	90	40	30	38	53.5	100	40	55	55	10	43.7	M36*2.0P	4.7
SBT50-SCA40-135	308.3	135	40	30	38	98.5	100	40	55	55	10	43.7	M36*2.0P	5

特点:

注:

- ◎ 割槽刀，三面刃铣刀等使用时，为使用刀具与刀杆紧密接触，请调整垫片
- ◎ 选购刀柄，根据加工需要请确认装锯片卡位大小。不附带拉钉
- ◎ 拉钉须另行购买

Features:

- ◎ Shears the trough knife, when uses and so on three edge milling cutters, is uses the cutting tool and the cutter bar contacts closely, requests transfer the entire filling piece.
- ◎ Selects and purchases the hilt, according to the processing needs please to confirm that installs the saw blade jamming size. Does not supplement the puller bolt to select.
- ◎ The pull stud must purchase alone.



CNC TOOLS
数控
刀柄

数控刀柄系列CNC TOOL SYSTEMS

SBT-M 螺纹连接刀柄（直柄）

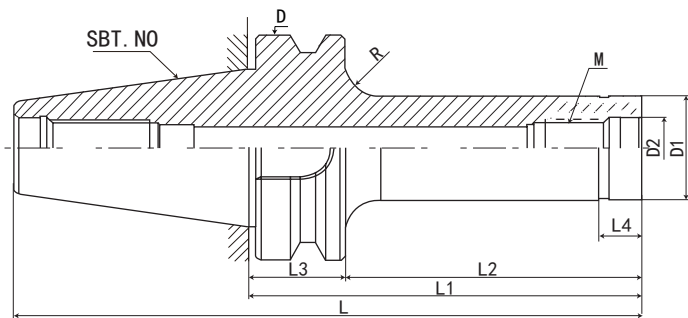
SBT-M THERADED CHUCK



P.129



P.M21



规格 Model	L	L1	L2	L3	L4	D	D1	D2	M	R	重量 KGS
SBT30-M08-60	108.4	60	38	22	12	46	15.4	8.5	M8*1.25P	4	
SBT30-M08-90	138.4	90	68	22	12	46	15.4	8.5	M8*1.25P	4	0.5
SBT30-M08-110	158.4	110	88	22	12	46	15.4	8.5	M8*1.25P	4	
SBT30-M10-60	108.4	60	38	22	12	46	19	10.5	M10*1.5P	4	
SBT30-M10-90	138.4	90	68	22	12	46	19	10.5	M10*1.5P	4	0.5
SBT30-M10-110	158.4	110	88	22	12	46	19	10.5	M10*1.5P	4	
SBT30-M12-60	108.4	60	38	22	12	46	24	12.5	M12*1.75P	4	
SBT30-M12-90	138.4	90	68	22	12	46	24	12.5	M12*1.75P	4	0.6
SBT30-M12-110	158.4	110	88	22	12	46	24	12.5	M12*1.75P	4	
SBT30-M16-60	108.4	60	38	22	12	46	29	17	M16*2.0P	4	
SBT30-M16-90	138.4	90	68	22	12	46	29	17	M16*2.0P	4	0.7
SBT30-M16-110	158.4	110	88	22	12	46	29	17	M16*2.0P	4	
SBT40-M08-60	125.4	60	33	27	12	63	15.4	8.5	M8*1.25P	10	1.1
SBT40-M08-90	155.4	90	63	27	12	63	15.4	8.5	M8*1.25P	10	1.2
SBT40-M08-110	175.4	110	83	27	12	63	15.4	8.5	M8*1.25P	10	1.2
SBT40-M10-60	125.4	60	33	27	12	63	19	10.5	M10*1.5P	10	1.1
SBT40-M10-90	155.4	90	63	27	12	63	19	10.5	M10*1.5P	10	1.1
SBT40-M10-110	175.4	110	83	27	12	63	19	10.5	M10*1.5P	10	1.2
SBT40-M12-60	125.4	60	33	27	12	63	24	12.5	M12*1.75P	10	1.2
SBT40-M12-90	155.4	90	63	27	12	63	24	12.5	M12*1.75P	10	1.3
SBT40-M12-110	175.4	110	83	27	12	63	24	12.5	M12*1.75P	10	1.3
SBT40-M16-60	125.4	60	33	27	12	63	29	17	M16*2.0P	10	1.2
SBT40-M16-90	155.4	90	63	27	12	63	29	17	M16*2.0P	10	1.3
SBT40-M16-110	175.4	110	83	27	12	63	29	17	M16*2.0P	10	1.4
SBT50-M08-60	161.8	60	22	38	12	100	15.4	8.5	M8*1.25P	10	
SBT50-M08-90	191.8	90	52	38	12	100	15.4	8.5	M8*1.25P	10	3.8
SBT50-M08-110	211.8	110	72	38	12	100	15.4	8.5	M8*1.25P	10	3.8
SBT50-M10-60	161.8	60	22	38	12	100	19	10.5	M10*1.5P	10	
SBT50-M10-90	191.8	90	52	38	12	100	19	10.5	M10*1.5P	10	3.8
SBT50-M10-110	211.8	110	72	38	12	100	19	10.5	M10*1.5P	10	3.8
SBT50-M12-60	161.8	60	22	38	12	100	24	12.5	M12*1.75P	10	
SBT50-M12-90	191.8	90	52	38	12	100	24	12.5	M12*1.75P	10	3.9
SBT50-M12-110	211.8	110	72	38	12	100	24	12.5	M12*1.75P	10	3.9
SBT50-M16-60	161.8	60	22	38	12	100	29	17	M16*2.0P	10	3.9
SBT50-M16-90	191.8	90	52	38	12	100	29	17	M16*2.0P	10	3.9
SBT50-M16-110	211.8	110	72	38	12	100	29	17	M16*2.0P	10	3.9

SBT-M 螺纹连接刀柄（斜柄）

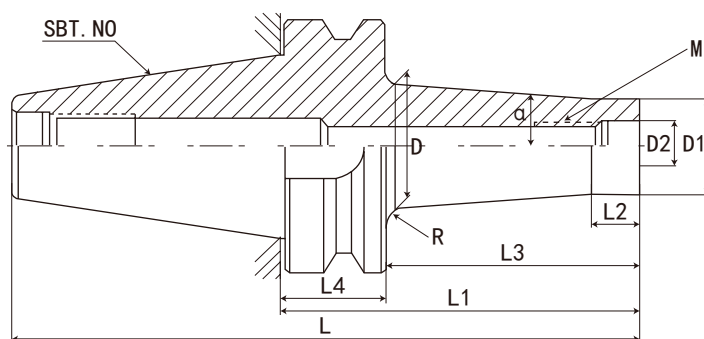
SBT-M THERADED CHUCK



P.129



P.M21



规格 Model	L	L1	L2	L3	L4	D	D1	D2	M	α	R	重量 KGS
SBT30-M08-60-A5	109.3	60	12	39	22	19.5	15.4	8.5	M8*1.25P	5°	4	
SBT30-M08-90-A5	139.3	90	12	69	22	24.5	15.4	8.5	M8*1.25P	5°	4	
SBT30-M10-60-A4	109.3	60	12	39	22	22	19	10.5	M10*1.5P	4°	4	
SBT30-M10-90-A4	139.3	90	12	69	22	26	19	10.5	M10*1.5P	4°	4	
SBT30-M12-60-A4	109.3	60	12	39	22	27	24	12.5	M12*1.75P	4°	4	
SBT30-M12-90-A4	139.3	90	12	69	22	31.5	24	12.5	M12*1.75P	4°	2	
SBT30-M16-60-A4	109.3	60	12	39	22	32.5	29	17	M16*2.0P	4°	2	
SBT30-M16-90-A4	139.3	90	12	69	22	36.5	29	17	M16*2.0P	4°	2	
SBT40-M08-60-A5	126.4	60	12	34	27	18	15.4	8.5	M8*1.25P	5°	5	
SBT40-M08-90-A5	156.4	90	12	64	27	23.5	15.4	8.5	M8*1.25P	5°	5	
SBT40-M08-110-A5	176.4	110	12	84	27	27	15.4	8.5	M8*1.25P	5°	5	
SBT40-M08-150-A5	216.4	150	12	124	27	34	15.4	8.5	M8*1.25P	5°	5	
SBT40-M08-200-A5	266.4	200	12	174	27	42.5	15.4	8.5	M8*1.25P	5°	5	
SBT40-M10-60-A4	126.4	60	12	34	27	21.5	19	10.5	M10*1.5P	4°	5	
SBT40-M10-90-A4	156.4	90	12	64	27	25.5	19	10.5	M10*1.5P	4°	5	
SBT40-M10-110-A4	176.4	110	12	84	27	28.5	19	10.5	M10*1.5P	4°	5	
SBT40-M10-150-A4	216.4	150	12	124	27	34	19	10.5	M10*1.5P	4°	5	
SBT40-M10-200-A4	266.4	200	12	174	27	41	19	10.5	M10*1.5P	4°	5	
SBT40-M12-60-A4	126.4	60	12	34	27	25.5	23	12.5	M12*1.75P	4°	5	
SBT40-M12-90-A4	156.4	90	12	64	27	29.5	23	12.5	M12*1.75P	4°	5	
SBT40-M12-110-A4	176.4	110	12	84	27	32.5	23	12.5	M12*1.75P	4°	5	
SBT40-M12-135-A4	201.4	135	12	109	27	36	23	12.5	M12*1.75P	4°	5	
SBT40-M12-150-A4	216.4	150	12	124	27	38	23	12.5	M12*1.75P	4°	5	
SBT40-M12-200-A4	266.4	200	12	174	27	45	23	12.5	M12*1.75P	4°	5	
SBT40-M16-60-A4	126.4	60	12	34	27	31	28.8	17	M16*2.0P	4°	5	
SBT40-M16-90-A4	156.4	90	12	64	27	35.5	28.8	17	M16*2.0P	4°	5	
SBT40-M16-110-A4	176.4	110	12	84	27	38	28.8	17	M16*2.0P	4°	5	
SBT40-M16-135-A4	201.4	135	12	109	27	41.5	28.8	17	M16*2.0P	4°	5	
SBT40-M16-150-A4	216.4	150	12	124	27	43.5	28.8	17	M16*2.0P	4°	5	
SBT40-M16-200-A4	266.4	200	12	174	27	50.5	28.8	17	M16*2.0P	4°	5	



CNC TOOLS
数控刀柄

数控刀柄系列CNC TOOL SYSTEMS

SBT50-M 螺纹连接刀柄 (斜柄)

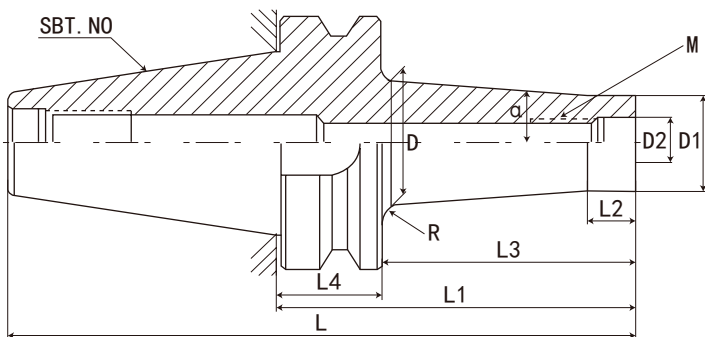
SBT50-M THERADED CHUCK



P.129



P.M21

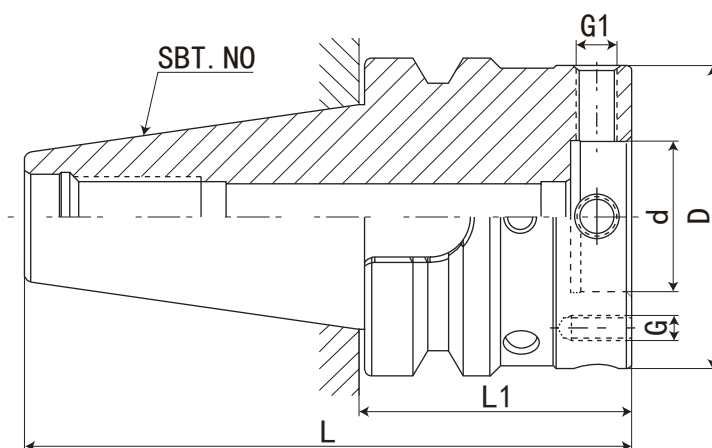


规格 Model	L	L1	L2	L3	L4	D	D1	D2	M	α	R	重量 KGS
SBT50-M08-60-A5	163.3	60	12	23.5	38	17.5	15.4	8.5	M8*1.25P	5°	10	
SBT50-M08-90-A5	193.3	90	12	53.5	38	20.5	15.4	8.5	M8*1.25P	5°	10	
SBT50-M08-110-A5	213.3	110	12	73.5	38	24	15.4	8.5	M8*1.25P	5°	10	
SBT50-M08-150-A5	253.3	150	12	113.5	38	31	15.4	8.5	M8*1.25P	5°	10	
SBT50-M08-200-A5	303.3	200	12	163.5	38	40	15.4	8.5	M8*1.25P	5°	10	5
SBT50-M08-250-A5	353.3	250	12	213.5	38	48.5	15.4	8.5	M8*1.25P	5°	10	
SBT50-M08-300-A5	403.3	300	12	263.5	38	57.5	15.4	8.5	M8*1.25P	5°	10	
SBT50-M10-60-A4	163.3	60	12	23.5	38	20.5	19	10.5	M10*1.5P	4°	10	
SBT50-M10-90-A4	193.3	90	12	53.5	38	23	19	10.5	M10*1.5P	4°	10	
SBT50-M10-110-A4	213.3	110	12	73.5	38	26	19	10.5	M10*1.5P	4°	10	4
SBT50-M10-150-A4	253.3	150	12	113.5	38	31.5	19	10.5	M10*1.5P	4°	10	
SBT50-M10-200-A4	303.3	200	12	163.5	38	38.5	19	10.5	M10*1.5P	4°	10	
SBT50-M10-250-A4	353.3	250	12	213.5	38	45.5	19	10.5	M10*1.5P	4°	10	
SBT50-M10-300-A4	403.3	300	12	263.5	38	52.5	19	10.5	M10*1.5P	4°	10	6.4
SBT50-M12-60-A4	163.3	60	12	23.5	38	25.5	24	12.5	M12*1.75P	4°	10	
SBT50-M12-90-A4	193.3	90	12	53.5	38	28	24	12.5	M12*1.75P	4°	10	
SBT50-M12-110-A4	213.3	110	12	73.5	38	31	24	12.5	M12*1.75P	4°	10	
SBT50-M12-135-A4	238.3	135	12	98.5	38	34.5	24	12.5	M12*1.75P	4°	10	
SBT50-M12-150-A4	253.3	150	12	113.5	38	36.5	24	12.5	M12*1.75P	4°	10	
SBT50-M12-200-A4	303.3	200	12	163.5	38	43.5	24	12.5	M12*1.75P	4°	10	
SBT50-M12-250-A4	353.3	250	12	213.5	38	50.5	24	12.5	M12*1.75P	4°	10	
SBT50-M12-300-A4	403.3	300	12	263.5	38	57.5	24	12.5	M12*1.75P	4°	10	
SBT50-M16-60-A4	163.3	60	12	23.5	38	30.5	29	17	M16*2.0P	4°	10	
SBT50-M16-90-A4	193.3	90	12	53.5	38	33	29	17	M16*2.0P	4°	10	
SBT50-M16-110-A4	213.3	110	12	73.5	38	36	29	17	M16*2.0P	4°	10	
SBT50-M16-135-A4	238.3	135	12	98.5	38	39.5	29	17	M16*2.0P	4°	10	
SBT50-M16-150-A4	253.3	150	12	113.5	38	41.5	29	17	M16*2.0P	4°	10	4.8
SBT50-M16-200-A4	303.3	200	12	163.5	38	48.5	29	17	M16*2.0P	4°	10	5.5
SBT50-M16-250-A4	353.3	250	12	213.5	38	55.5	29	17	M16*2.0P	4°	10	
SBT50-M16-300-A4	403.3	300	12	263.5	38	62.5	29	17	M16*2.0P	4°	10	



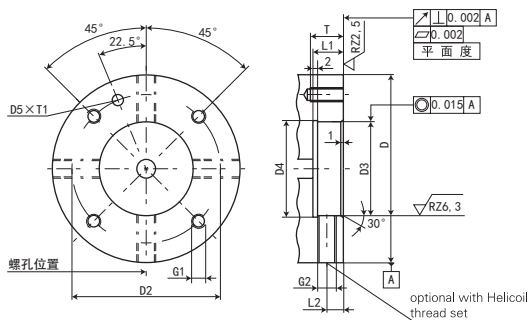
SBT-MOD 模块刀柄

SBT-MOD MODULAR TOOL HOLDER



P.129

规格 Model	L	L1	D	d	G1	G	重量 KGS
SBT30-MOD060-040	88.4	40	60	30	M8*1.0P	M5*0.8P	0.7
SBT30-MOD070-040	88.4	40	70	35	M8*1.0P	M6*1.0P	0.8
SBT40-MOD060-055	120.4	55	60	30	M8*1.0P	M5*0.8P	1.5
SBT40-MOD070-055	120.4	55	70	35	M8*1.0P	M6*1.0P	1.6
SBT40-MOD080-065	130.4	65	80	40	M8*1.0P	M6*1.0P	2
SBT40-MOD100-070	135.4	70	100	50	M10*1.0P	M8*1.25P	2.6
SBT45-MOD060-065	147.8	65	60	30	M8*1.0P	M5*0.8P	3
SBT45-MOD070-065	147.8	65	70	35	M8*1.0P	M6*1.0P	3.1
SBT45-MOD080-065	147.8	65	80	40	M8*1.0P	M6*1.0P	3.3
SBT45-MOD100-075	157.8	75	100	50	M10*1.0P	M8*1.25P	3.5
SBT45-MOD117-075	157.8	75	117	60	M10*1.0P	M8*1.25P	4.4
SBT50-MOD060-070	171.8	70	60	30	M8*1.0P	M5*0.8P	4.8
SBT50-MOD070-070	171.8	70	70	35	M8*1.0P	M6*1.0P	4.9
SBT50-MOD080-070	171.8	70	80	40	M8*1.0P	M6*1.0P	5.1
SBT50-MOD100-070	171.8	70	100	50	M10*1.0P	M8*1.25P	5.3
SBT50-MOD117-080	181.8	80	117	60	M10*1.0P	M8*1.25P	6.3
SBT50-MOD140-080	181.8	80	140	80	M10*1.0P	M8*1.25P	6.6



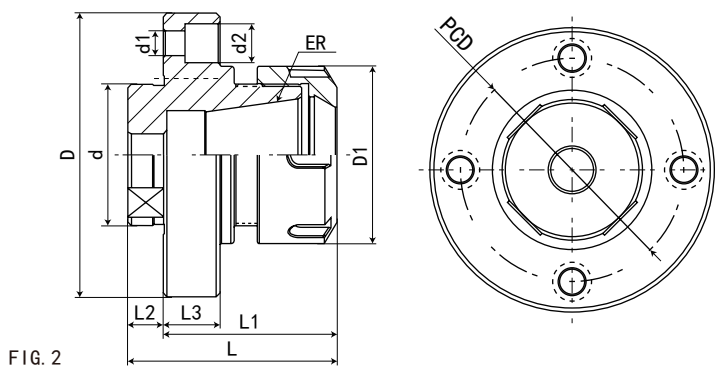
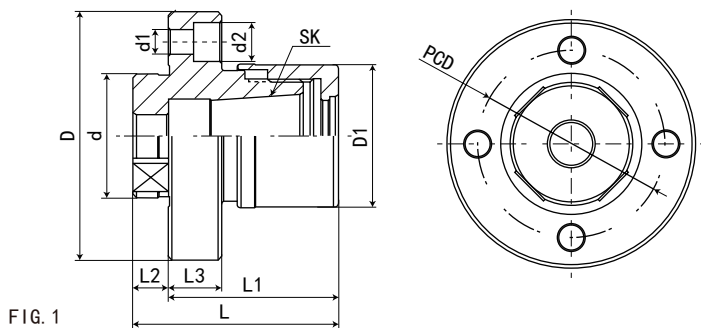
Nominal size module diameter D	32	40	50	63	80	100	125	160
D2+/-0.1	44	53	63	79	96	119	150	185
D3F8	30	35	40	50	60	80	100	120
D4	31	36	41	51	61	81	101	121
D5	4.5	5	5	5	6	6	6	6
L1	12	12	12	14	14	14	24	37
L2	7	7	7	8	8	8	8	8
G1	M5	M6	M6	M8	M8	M10	M12	M12
G2	M8*1	M8*1	M8*1	M10*1	M10*1	M10*1	M10*1	M10*1
T	11	14	14	15	15	18	25	25
T1+0.5	3	3.5	3.5	3.5	4.5	4.5	4.5	4.5

CNC TOOLS
数控刀柄

数控刀柄系列CNC TOOL SYSTEMS

MOD 法兰盘

MOD FLANGE PLATE



规格 Model	D	D1	d	d1	d2	L	L1	L2	L3	PCD	FIG	重量 KGS
MOD060-GSK16-48	60	40	30	6	9	58	48	10	15	44	1	
MOD070-GSK16-48	70	40	35	7	11	58	48	10	15	53	1	
MOD080-GSK16-49	80	40	40	7	11	59	49	10	16	63	1	
MOD080-ER32-49	80	50	40	7	11	59	49	10	16	63	2	
MOD100-ER40-63	100	63	50	9	14	75	63	12	18	79	2	



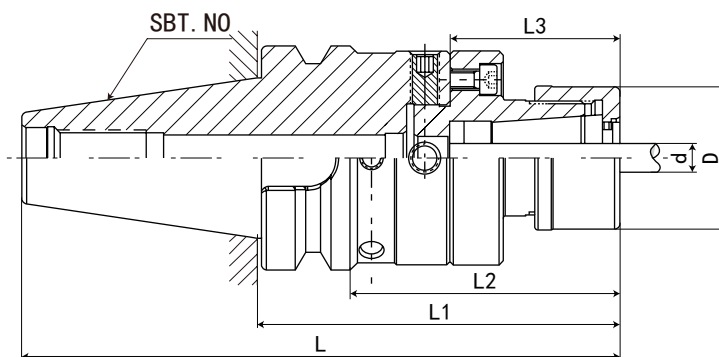
数控刀柄
CNC TOOLS

SBT-MOD 可调精度刀柄（铰刀专用）

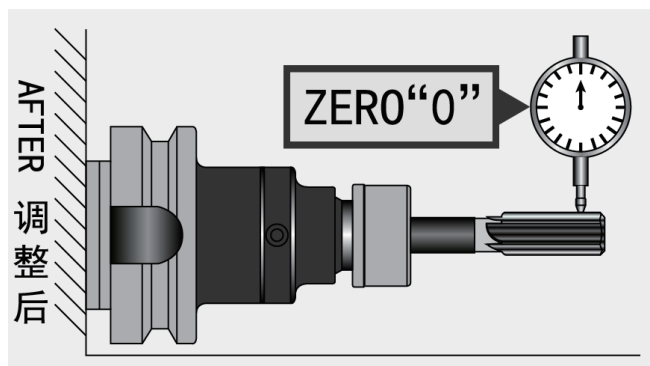
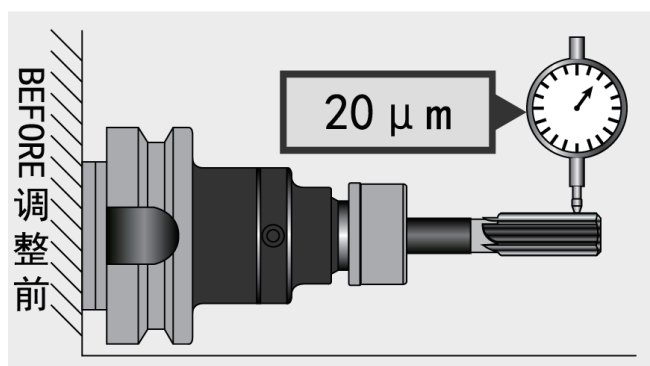
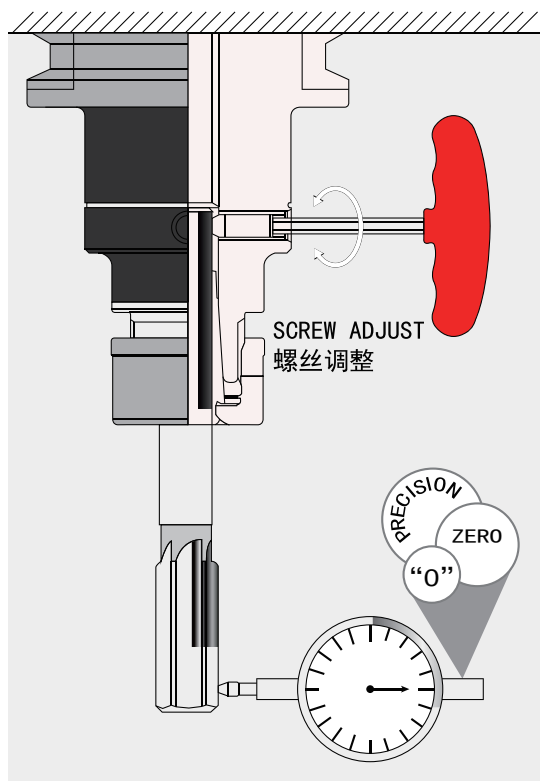
SBT-MOD ADJUSTABLE CHUCK (REAMER USING)



P.129



规格 Model	L	L1	L2	L3	D	d 夹持范围 Range	弹性筒夹 Collets
SBT30-MOD060-GSK16-88	136.4	88	66	48	40	3-16mm	GSK16
SBT30-MOD070-GSK16-88	136.4	88	66	48	40	3-16mm	GSK16
SBT40-MOD060-GSK16-103	168.4	103	76	48	40	3-16mm	GSK16
SBT40-MOD070-GSK16-103	168.4	103	76	48	40	3-16mm	GSK16
SBT40-MOD080-ER32-114	179.4	114	87	49	50	2-20mm	ER32
SBT40-MOD080-GSK16-114	179.4	114	87	49	40	3-16mm	GSK16
SBT40-MOD100-ER40-133	198.4	133	106	63	63	2-26mm	ER40
SBT50-MOD060-GSK16-118	219.8	118	80	48	40	3-16mm	GSK16
SBT50-MOD070-GSK16-118	219.8	118	80	48	40	3-16mm	GSK16
SBT50-MOD080-ER32-119	220.8	119	81	49	50	2-20mm	ER32
SBT50-MOD080-GSK16-119	220.8	119	81	49	40	3-16mm	GSK16
SBT50-MOD100-ER40-133	134.8	133	95	63	63	2-26mm	ER40



特点:

- ◎ 刀尖位置可调至“0”位置
- ◎ 机械主轴、夹头、刀具的累计误差值可一次调整补正

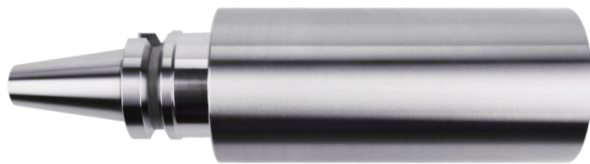
Features:

- ◎ The tool tip position can be adjusted as “0” position.
- ◎ The accumulated error value of the spindle, the chuck, and the tool can all be adjusted and corrected at the same time.

数控刀柄系列CNC TOOL SYSTEMS

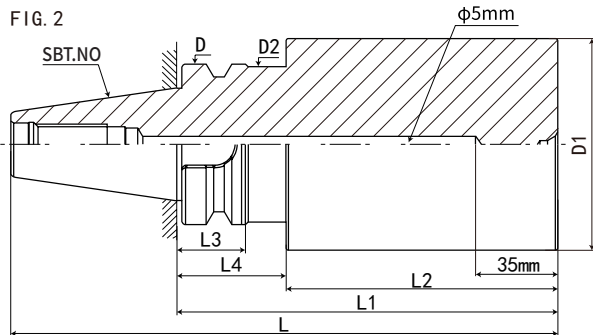
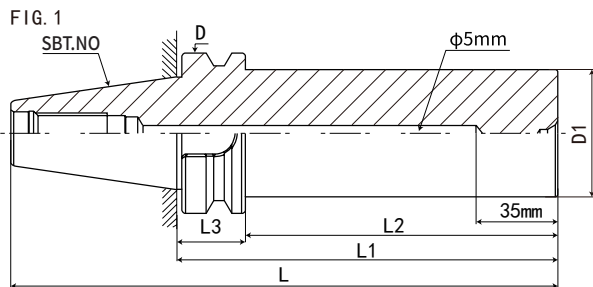
SBT30- 基础柄刀柄

SBT30 SEMI-FINISHED TOOL HOLDER



P.129

- 锥柄硬度 HRC50-53
- 前端硬度 HRC40-45
- Taper shank hardness HRC50-53
- Front end hardness HRC40-45



规格 Model	L	L1	L2	L3	L4	D	D1	D2	FIG	重量 KGS
SBT30-D50-100	148.4	100	68	32	22	50	46	44	2	
SBT30-D50-125	173.4	125	93	32	22	50	46	44	2	
SBT30-D50-150	198.4	150	118	32	22	50	46	44	2	
SBT30-D63-100	148.4	100	68	32	22	63	46	44	2	
SBT30-D63-125	173.4	125	93	32	22	63	46	44	2	
SBT30-D63-150	198.4	150	118	32	22	63	46	44	2	
SBT30-D83-100	148.4	100	68	32	22	83	46	44	2	
SBT30-D83-125	173.4	125	93	32	22	83	46	44	2	
SBT30-D102-125	173.4	125	93	32	22	102	46	44	2	
SBT40-D50-100	165.4	100	73	-	27	50	63	-	1	
SBT40-D50-150	215.4	150	123	-	27	50	63	-	1	
SBT40-D50-200	265.4	200	173	-	27	50	63	-	1	
SBT40-D63-100	165.4	100	63	37	27	63	63	61	2	
SBT40-D63-150	215.4	150	113	37	27	63	63	61	2	
SBT40-D63-200	265.4	200	163	37	27	63	63	61	2	
SBT40-D63-250	315.4	250	213	37	27	63	63	61	2	
SBT40-D83-100	165.4	100	63	37	27	83	63	61	2	
SBT40-D83-150	215.4	150	113	37	27	83	63	61	2	
SBT40-D83-200	265.4	200	163	37	27	83	63	61	2	
SBT40-D83-250	315.4	250	213	37	27	83	63	61	2	
SBT40-D102-150	215.4	150	113	37	27	102	63	61	2	
SBT50-D102-100	201.8	100	52	48	38	102	100	98	2	
SBT50-D102-150	251.8	150	102	48	38	102	100	98	2	
SBT50-D102-200	301.8	200	152	48	38	102	100	98	2	
SBT50-D102-250	351.8	250	202	48	38	102	100	98	2	
SBT50-D102-300	401.8	300	252	48	38	102	100	98	2	
SBT50-D127-150	251.8	150	102	48	38	127	100	98	2	
SBT50-D127-200	301.8	200	152	48	38	127	100	98	2	