

Waldmann **W**
ENGINEER OF LIGHT.

C/E

FLAT LED | 即插即用 + 高品质照明



FLAT LED 灯具：超薄机身，超强亮度。 FLAT LED – MAXIMUM LIGHT WITH MINIMUM HEIGHT.

FLAT LED 泛光照明推出，再次展示了沃达迈作为照明专家的创新力。FLAT LED 将 LED 技术的优势与沃达迈研发制造的新型光学透镜很好的结合起来。

凭借创新技术，该款机床灯具实现超薄机身，超强亮度。其配备的智能化即插即用型电子元件，能直接连接24伏直流或交流电源。

出色的超薄设计源于沃达迈光学技术的不断创新。产品照射角度可达到60度，确保加工区域的大范围均匀照明，从而提高作业的可靠性和生产效率。

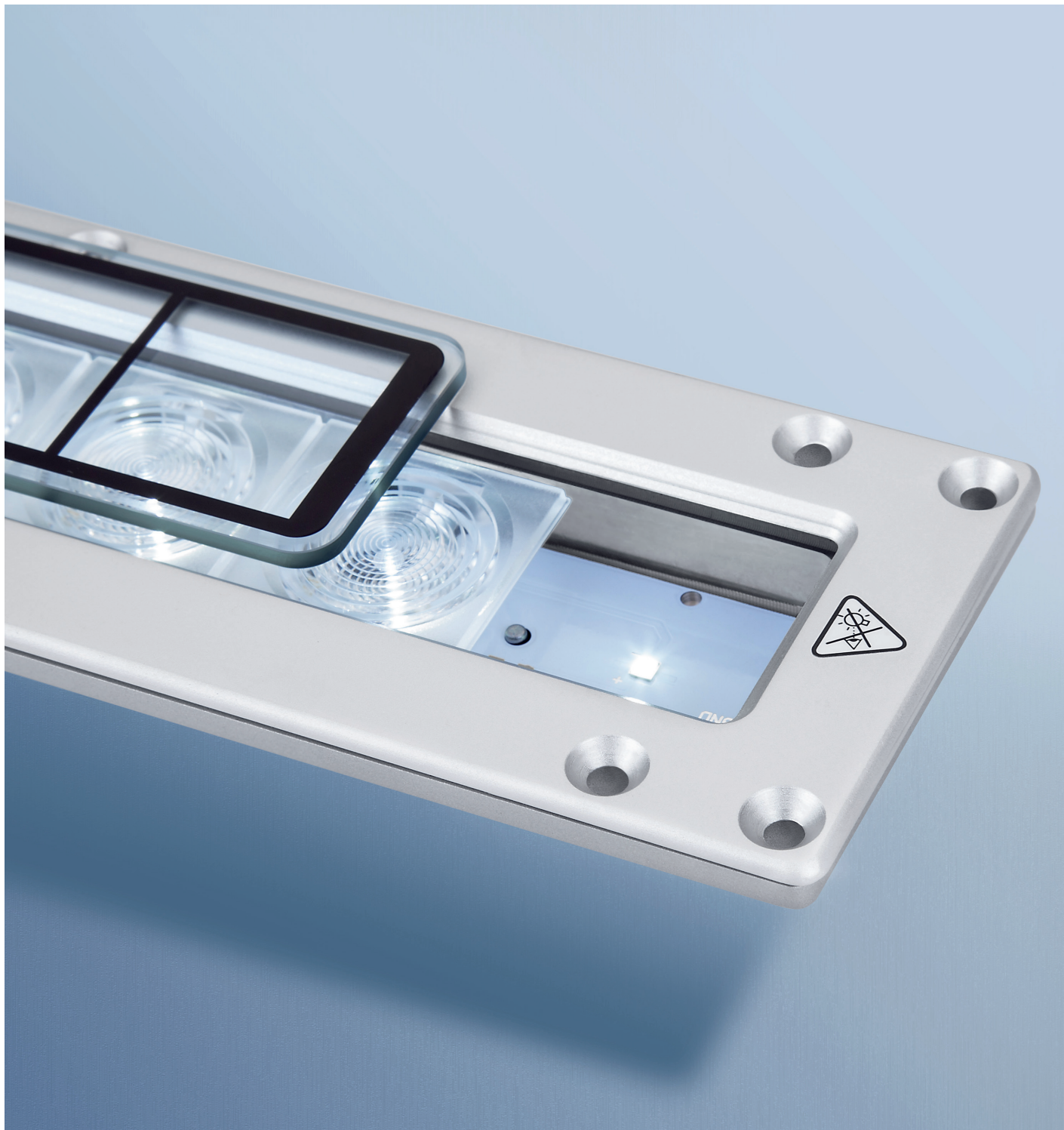
FLAT LED 使得机床操作人员可轻松看清工件的每一细节。“轻松”也意味着“不易疲劳”。因此操作人员能更加专注、积极、高效。

With the FLAT LED flood light, Waldmann is again demonstrating its power of innovation as an Engineer of Light. The FLAT LED combines the strengths of LED technology with new optics designed in the Waldmann development center and produced by Waldmann.

The result: A machine luminaire with minimal height, maximum luminous power and intelligent PLUG + LIGHT electronics, which allows direct connection to 24-volt direct or alternating current.

The impressively flat design is the result of innovative Waldmann optics technology. It produces a beam angle of 60°, which ensures large-scale, uniform illumination of the processing area. As a result, process reliability and productivity are increased.

The FLAT LED allows the machine operator to effortlessly see every detail of the work piece. "Effortlessly" also means "without fatigue". The operator can concentrate better, is more motivated and his performance is improved.



尤其适合为安装空间狭小的机器提供照明

FLAT LED专注于解决日趋复杂的机器隔室，更紧凑、更狭小安装空间的照明难题。FLAT LED拥有超薄光学透镜，仅需占用很小的空间。

1 | 沃达迈创新型光学透镜，发光角度达到60°，光线均匀、照射范围广。

Perfect for machines with small installation space.

The FLAT LED is the lighting technology answer to ever more complex machine compartments, tighter spaces, and less installation space available for lighting. Due to the extremely thin optics, the FLAT LED requires hardly any space.

1 | The innovative Waldmann optics with a 60° beam angle for large-scale and uniform illumination.





即插即用 + 高品质照明: 更舒适安全。 PLUG + LIGHT – MORE COMFORT AND SAFETY.

即插即用: 一体化的LED模块, 实现快速安装。

- 适合23-25V直流。
- 可与24V电压直接连接。无需额外布线, 能最大程度降低安装成本。

高品质照明: 操作安全, 无频闪效应, 散热效果好。

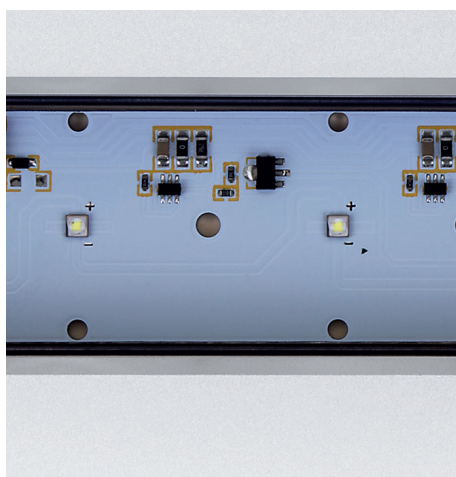
- 光线无闪烁, 避免安装和维护时的事故风险。
- 光照方向温度低, 不会造成冷却剂和润滑油的燃烧。
- 稳定的亮度, 更安全, 更高效。

PLUG – fast installation, thanks to integrated LED operating device.

- For 23-25 volt DC.
- Direct connection to 24 volt. Consequently, minimized installation cost without additional wiring expense.

LIGHT – safe operation without stroboscopic effect and minimal heat build-up.

- Flicker-free light. Consequently, no risk of accidents during installation and maintenance.
- Low temperature in the radiation direction. Consequently, no burning of coolants and lubricants.
- Constant brightness level. Consequently, higher safety and quality of work.



电子技术

沃达迈专为FLAT LED研发的智能电路板，可就线路电压波动提供电子补偿，确保绝对均匀的照明质量。此外，散热得到优化。LED产生的热量可向前通过外壳发散，保证LED超长使用寿命。

The electronics technology.

The intelligent circuit board was specially developed by Waldmann for the FLAT LED; it offers electronic compensation for line voltage fluctuations and guarantees absolutely uniform lighting quality. In addition, heat that is produced by the LEDs is optimally forwarded to the casing. This guarantees a long service life of the LEDs.

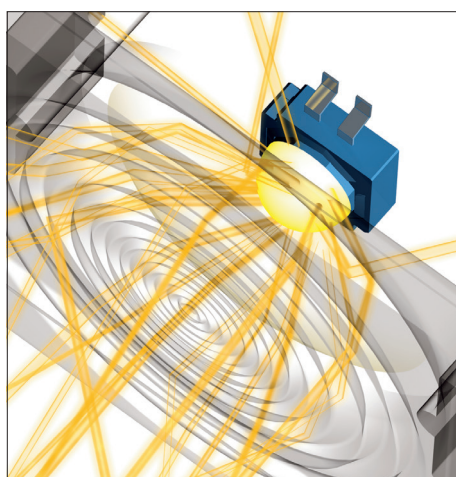


外壳技术

沃达迈精湛的外壳工艺众所公认：采用钢化防护玻璃，铝合金外壳，耐磨、耐热、防腐蚀；符合 IP 67防护等级，绝对防水。此外外壳还有助于散热。

The housing technology.

Proven Waldmann premium workmanship on the casing: The protective glass made of tempered glass, and the aluminum casing, are resistant to wear, heat, and corrosion, and by complying with the IP 67 protection class, they are also absolutely waterproof. In addition, the casing serves as a heat dissipator.



LED技术

FLAT LED配有高性能LED，使用寿命超过50,000小时，实现6年免维护不间断照明！内置LED可抵抗各种常规机械类应力，如震动、冲击和频繁的开关等。

The LED technology.

The FLAT LED is equipped with high-performance LEDs with a service life of 50,000 hours. This provides 6 years of maintenance-free, around-the-clock lighting! The LEDs are resistant to a wide spectrum of typical machine-related stress factors, such as vibrations, shock, and frequent on and off switching.

FLAT LED – 表面安装式/嵌入式 FLAT LED MOUNTED/INTEGRATED VERSION

FLAT LED – 表面安装式

表面安装式FLAT LED厚度仅为20mm，是空间局促的小型机器或系统照明的理想选择。产品可以简单快速地固定在机器壁上，既节省时间又降低了安装成本。

FLAT LED – Mounted version.

With a minimal height of only 20 mm, the FLAT LED mounted version is ideally suited for the flexible illumination of small machines or systems with tight space conditions. The luminaires can be fastened to the machine wall quickly and easily. This saves time, and lowers the installation cost.



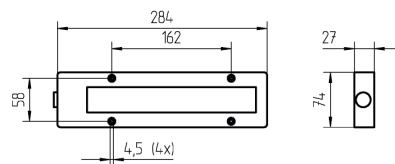
技术参数 / TECHNICAL DATA

配置:	6 x 2 W
功耗:	约12W
外壳:	铝质, 硬质阳极氧化(表面硬化处理)
防护罩:	硼硅酸盐玻璃
电源线:	约3.0m (防油电缆)
Fitted with:	6 x 2 W
Power consumption:	approx. 12 watt
Casing:	Aluminum, hard anodized (hard coating)
Lamp cover:	Borosilicate glass screen
Connecting line:	approx. 3.0 m (oil resistant cable)

表面安装式 / MOUNTED VERSION



CE

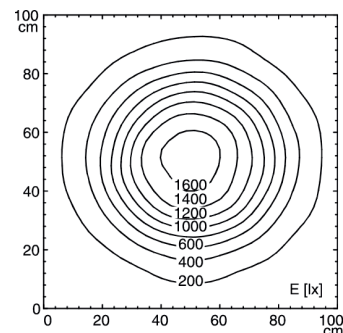


连接负载	发光角度	技术	保护系统	型号	订单号
------	------	----	------	----	-----

23 – 25 V (DC)	60 °	无变压器	IP 67	MYAL 6 S	CN0002000-00620111
----------------	------	------	-------	----------	--------------------

CONNECTED LOAD	BEAM ANGLE	TECHNOLOGY	SYSTEM OF PROTECTION	MODEL	ORDER NO.
----------------	------------	------------	----------------------	-------	-----------

23 – 25 Volt (DC)	60 °	without transformer	IP 67	MYAL 6 S	CN0002000-00620111
-------------------	------	---------------------	-------	----------	--------------------



光线分布图 (测量距离 100cm)
Lichtverteilung (Messabstand 100 cm).



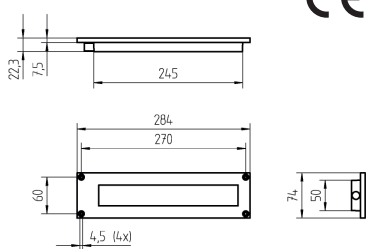
FLAT LED – 嵌入式

灯具嵌入于机器壁内，与机器形成一个整体。该嵌入式安装方式，有利于节省更多空间安装其它机器组件。另一大优势就是FLAT LED高度一体化设计使得金属碎屑及灰尘无处藏身。

FLAT LED – Integrated version.

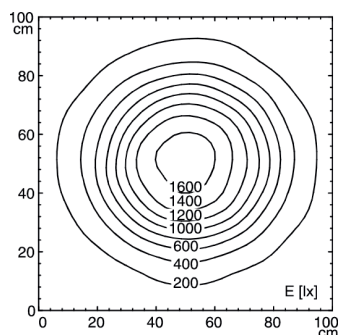
The luminaire is integrated in the machine wall. Due to the flush installation, additional space is created for other machine components. Another practical advantage is that no metal chips can be deposited on the FLAT LED, and the dreaded chip build-up is prevented.

嵌入式 / INTEGRATED VERSION 技术参数 / TECHNICAL DATA



配置:	6 x 2 W
功耗:	约12W
外壳:	铝质, 硬质阳极氧化 (表面硬化处理)
防护罩:	硼硅酸盐玻璃
电源线:	约3.0m (防油电缆)
Fitted with:	6 x 2 W
Power consumption:	approx. 12 watt
Casing:	Aluminum, hard anodized (hard coating)
Lamp cover:	Borosilicate glass screen
Connecting line:	approx. 3.0 m (oil resistant cable)

连接负载 发光角度 技术 保护系统 型号 订单号



光线分布图 (测量距离 100cm)
Light allocation (measuring distance 100 cm).

连接负载	发光角度	技术	保护系统	型号	订单号
23 – 25 V (DC)	60 °	无变压器	IP 67	MYEL 6 S	CN0001000-00606973
CONNECTED LOAD	BEAM ANGLE	TECHNOLOGY	SYSTEM OF PROTECTION	MODEL	ORDER NO.
23 – 25 Volt (DC)	60 °	without transformer	IP 67	MYEL 6 S	CN0001000-00606973

HEADQUARTERS GERMANY

Herbert Waldmann GmbH & Co. KG
Postfach 50 62
78057 VILLINGEN-SCHWENNINGEN
GERMANY
Telephone +49 7720 601 - 0
Telephone +49 7720 601 - 100 (Sales)
Fax +49 7720 601 - 290
www.waldmann.com
sales.germany@waldmann.com

FRANCE

Waldmann Eclairage S.A.S.
Zone Industrielle
Rue de l'Embranchement
67116 REICHSSTETT
FRANCE
Telephone +33 3 88 20 95 88
Fax +33 3 88 20 95 68
www.waldmann.com
info-fr@waldmann.com

ITALY

Waldmann Illuminotecnica S.r.l.
Via della Pace, 18 A
20098 SAN GIULIANO MILANESE (MI)
ITALY
Telephone +39 02 98 24 90 24
Fax +39 02 98 24 63 78
www.waldmann.com
info-it@waldmann.com

THE NETHERLANDS

Waldmann B.V.
Lingewei 19
4004 LK TIEL
THE NETHERLANDS
Telephone +31 344 631019
Fax +31 344 627856
www.waldmann.com
info-nl@waldmann.com

AUSTRIA

Waldmann Lichttechnik Ges.m.b.H.
Gewerbepark Wagram 7
4061 PASCHING/LINZ
AUSTRIA
Telephone +43 7229 67400
Fax +43 7229 67444
www.waldmann.com
info-at@waldmann.com

SWEDEN

Waldmann Ljusteknik AB
Skebokvarnsvägen 370
124 50 BANDHAGEN
SWEDEN
Telephone +46 8 990 350
Fax +46 8 991 609
www.waldmann.com
info-se@waldmann.com

SWITZERLAND

Waldmann Lichttechnik GmbH
Benkenstrasse 57
5024 KÜTTIGEN
SWITZERLAND
Telephone +41 62 839 1212
Fax +41 62 839 1299
www.waldmann.com
info-ch@waldmann.com

UNITED KINGDOM

Waldmann Lighting Ltd.
7 Millfield House
Croxley Green Business Park
WATFORD WD18 8YX
UNITED KINGDOM
Telephone +44 1923 800030
Fax +44 1923 800016
www.waldmann.com
info-uk@waldmann.com

USA

Waldmann Lighting Company
9 W. Century Drive
WHEELING, ILLINOIS 60090
USA
Telephone +1 847 520 1060
Fax +1 847 520 1730
www.waldmannlighting.com
waldmann@waldmannlighting.com

中国 I CHINA

沃达迈灯具制造(上海)有限公司
Waldmann Lighting (Shanghai) Co., Ltd.
中国上海市宝山区
长建路199号5号标准厂房Alla单元
邮编 200949
Part A11a, No. Five Normative Workshop
199 Changjian Road, Baoshan
CN-Shanghai, P.R.C. 200949
电话| Phone +86 21 5169-1799
传真 | Fax +86 21 3385-0032
www.waldmann.com.cn
info-cn@waldmann.com

SINGAPORE

Waldmann Lighting Singapore Pte. Ltd.
77A Neil Road
SINGAPORE 088903
SINGAPORE
Telephone +65 6275 8300
Fax +65 6275 8377
www.waldmann.com
sales-sg@waldmann.com

INDIA

Waldmann Lighting Pvt. Ltd.
Plot No. 52
Udyog Vihar
Phase-VI, Sector-37
GURGAON-122001, HARYANA
INDIA
Telephone +91 124 412 1600
Fax +91 124 412 1611
www.waldmann.com