

## 产品简述 Product Brief

气动粉尘蝴蝶阀是由本公司设计的一种特殊侧推式气缸和铝合金蝶阀组成。蝶阀本体由高压铝合金阀体、可变形耐磨胶圈、阀板（铝合金、聚氨酯高分子复合、球墨铸铁、不锈钢）组成。是关闭料箱、料斗以及装有粉状或颗粒状物料等筒仓的理想产品,被广泛应用于混凝土搅拌站水泥粉传输、钢厂重力除尘等领域。由于此阀门的特殊结构以及工程材料的运用,它始终是一个非常经济且极高效的选择。

Pneumatic dust butterfly valve is composed of a special side push cylinder and aluminum alloy butterfly valve designed by our company. The butterfly valve body is composed of high-pressure aluminium alloy valve body, deformable wear-resistant rubber ring, valve plate (aluminium alloy, polyurethane polymer composite, ductile iron, stainless steel). It is an ideal product for closing silos, hoppers and silos with powdery or granular materials. It is widely used in cement powder transmission in concrete mixing stations, gravity dust removal in steel mills and other fields. Because of the special structure of the valve and the use of Engineering materials, it has always been a very economical and highly efficient choice.

### 主要特点 Main features

- 气动粉尘蝴蝶阀整体设计精巧,80%以上的零部件均采用铝合金材料,重量轻。

Pneumatic butterfly valve butterfly design overall dust delicate,more than 80% parts evenly using aluminum alloy materials,light weight.

- 采用本公司设计的粉尘蝶阀专用气缸,对料仓、料斗的物料迅速切断或开启。

The dust butterfly valve for cylinder design company,to the bunker,hopper materials quickly cut or open.

- 气缸采用双层 O 型圈组合性密封结构,大大增加了气缸的使用寿命。

Cylinder adopts double O-ring combined sealing structure, which greatly increases the service life of the cylinder.

- 阀体由两个高压印模压铸的半阀体组成,半阀体为铝合金材料。

The body consists of two high pressure die-cast half body composition, half body for aluminum alloy material.

- 阀圈设计为 U 形状,增强了其变形密封能力,具有磨损自动补给功能,耐磨、高效、可送零泄漏。

Valve coil design for U shape.enhance the deformation of the sealing ability with automatic recharge function wear,wear-resistant,high efficiency,and zero leakage.

- 连接处采用花键连接,坚固耐用,方便调节。

Spline connection is adopted at the joint, which is durable and easy to adjust.

- 铝合金旋转蝶板与阀轴采用一体式压铸成型,安装更加方便。

The aluminium alloy rotating the butterfly plate and the valve shaft adopts integral casting molding, convenient installation.

- 具有一个顶部法兰以及一个可拆卸管接,适用于连接一根柔性套管,方便连接出料。

Having a top flange and a removable pipe connection,suitable for the connection of a flexible pipe, convenient connection and discharging.

常安装于料斗,料箱,筒仓,螺旋泵或其他类型的输送机的下方,以及连接气动输送管道。

Usually installed in the hopper,hopper,silos,below the conveyor screw pump or other types of connections,and pneumatic conveying pipeline.

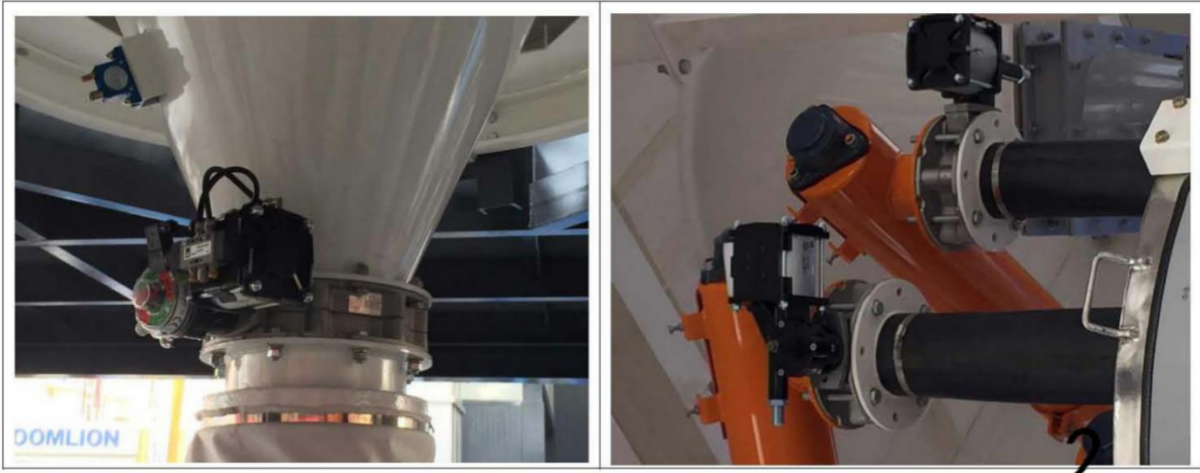
- 根据现场使用工况,驱动机构可选用气动、电动、液动、蜗轮传动等多种控制方式

According to the field work,driving mechanism choice of pneumatic,electric,hydraulic,gear and other control mode.

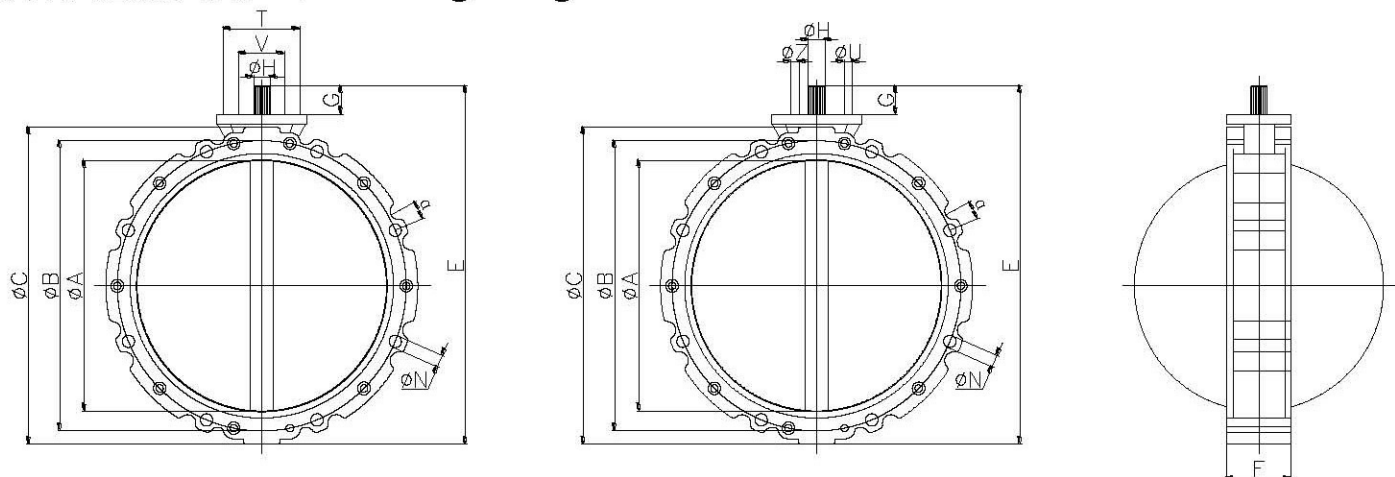
技术参数 Technical parameter

型号 Model	V2FS100 V2FS150 V2FS200 V2FS250 V2FS300 V2FS350 V2FS400 V2FS500 V2FS600 V1FS100 V1FS150 V1FS200 V1FS250 V1FS300 V1FS350 V1FS400 V1FS500 V1FS600				
工作压力 working pressure	0.4-0.7MPa MAX1.0MPa				
驱动方式 Drive mode	气动,电动、手动,蜗轮传动等 Pneumatic,electric,manual.,worm gear drive				
适用温度 Temperature	-20C~+80C 其他温度均有现货 All other temperatures are in stock.				
适用介质 Medium	水泥物料等粉体介质 Cement,material powder medium				
阀体 Body	压铸铝合金 die-casting aluminium				
蝶板 Butterfly	铝合金、聚氨酯高分子复合、球墨铸铁、不锈钢 aluminium alloy, polyurethane polymer composite, ductile iron, stainless steel				
阀杆 Stem	2Cr13,45#,不锈钢 stainless steel;				
阀座 Seat	耐磨橡胶 abrasive rubber				
执行标准 Implementation standards	设计规范	结构长度	法兰尺寸	检验试验	气动装置
	Design specification	structure length	Flange size	Inspection test	Pneumatic device
	ITALY	ITALY	ITALY	GB/T13927	JB/T8864

产品应用

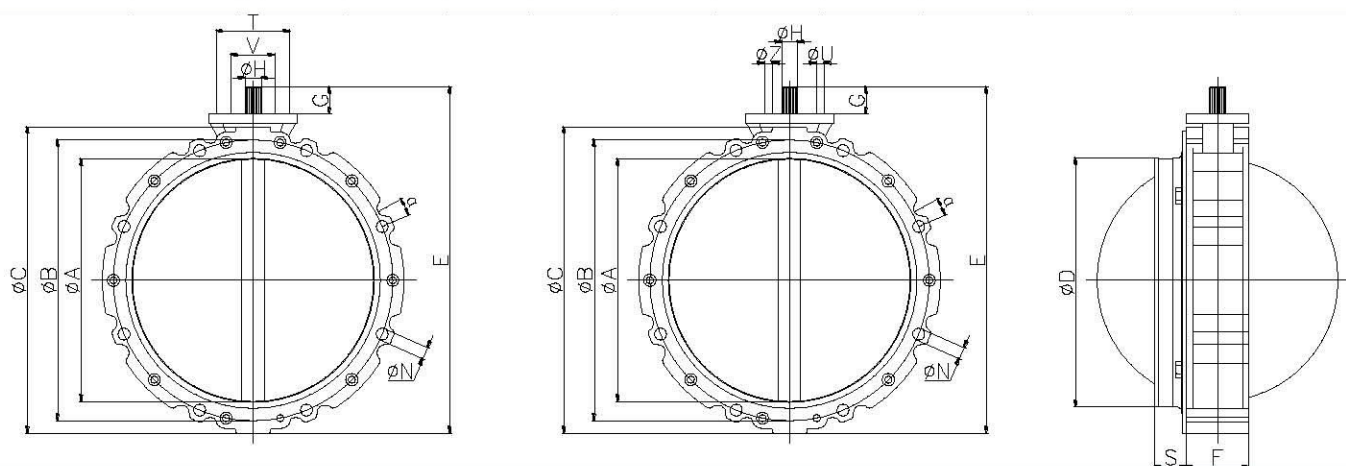


## 外形连接尺寸 Connecting flange size



BV2F 双法兰蝴蝶阀 Double flanged butterfly valve

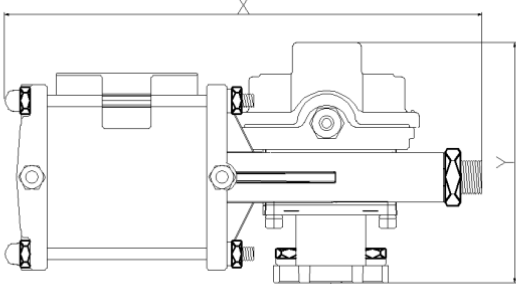
MODEL	$\Phi A$	$\Phi B$	$\Phi C$	E	F	V	T	$\Phi H$	G	$\Phi Z$	$\Phi U$	$\Phi N$
BV2F100	95	180	220	250	77	50	80	22	35	M10	M12	4-14
BV2F150	150	200	228	290	77	50	80	22	35	M10	M12	4-14
BV2F200	200	250	278	340	77	50	80	22	35	M10	M12	4-14
BV2F250	250	300	328	390	77	50	80	22	35	M10	M12	8-14
BV2F300	300	350	378	440	77	50	80	22	35	M10	M12	8-14
BV2F350	350	400	440	530	85	50	80	28	35	M10	M12	8-14
BV2F400	400	470	530	580	85	50	80	28	35	M10	M12	8-14
BV2F500	500	570	605	655	104	100	125	27*27	25	M10	M12	12-16
BV2F600	600	670	705	755	104	100	125	27*27	25	M10	M12	12-16



BV1F 单法兰蝴蝶阀 Single flanged butterfly valve

MODEL	$\Phi A$	$\Phi B$	$\Phi C$	E	F+S	V	T	$\Phi H$	G	$\Phi Z$	$\Phi U$	$\Phi N$
BV1F100	95	180	220	250	115	50	80	22	35	M10	M12	4-14
BV1F150	150	200	228	290	115	50	80	22	35	M10	M12	4-14
BV1F200	200	250	278	340	115	50	80	22	35	M10	M12	4-14
BV1F250	250	300	328	390	115	50	80	22	35	M10	M12	8-14
BV1F300	300	350	378	440	115	50	80	22	35	M10	M12	8-14
BV1F350	350	400	440	530	123	50	80	28	35	M10	M12	8-14
BV1F400	400	470	530	580	123	50	80	28	35	M10	M12	8-14

## 气动驱动器 Pneumatic Actuator

	型号 MODEL	X	Y
	CP101	285	143
	CP126	475	165

## 安装维护 Installation maintenance

- 阀门出厂前已经预装好并通过了测试。

Valves are pre-installed and tested before they leave the factory.

- 由于此阀门为铝合金阀体,故运输、存放时不要将重物置于阀门上。

Since the valve is an aluminium alloy body, do not place heavy objects on the valve during transportation and storage.

- 正常工作温度小于 80C,物料密度小于 1.3T/m<sup>3</sup>.

Normal working temperature is less than 80C and material density is less than 1.3T/m<sup>3</sup>.

- 在安装前请用一层薄液体来密封法兰。

Please seal the flange with a thin layer of liquid before installation.

- 安装时,要将阀门固定在(螺旋泵、输送带、振动进料仓或类似装置)上口请使用足够长的柱头螺栓连接上部连接法兰、阀门自身以及下部连接法兰,不得使阀门内部螺栓受力,否则可能会造成两个阀体分裂、损坏阀门。

When installing, the valve should be fixed at the top of (screw pump, conveyor belt, vibration feeding bin or similar device). Please use a long enough stud bolt to connect the upper connecting flange, the valve itself and the lower connecting flange. The internal bolt of the valve should not be stressed, otherwise the two valve bodies may be split and the valve may be damaged.

- 电气连接线的工作以及阀门的维护必须由专门的技术人员完成。

The work of electrical connections and the maintenance of valves must be done by specialized technicians.

- 安全注意事项:阀门工作期间,请勿将手伸入阀门内!在设备上安装安全铁格等,以免造成损伤!

Safety precautions: Do not put your hand into the valve during the working period of the valve!

Install safety iron grids on the equipment to avoid damage!

- 维护:每周检查一次,物料输送是否顺利,是否有淤积,必要时彻底清洁接触部分。

Maintenance: Check once a week to see if the material is transported smoothly, whether there is silt, and thoroughly clean the contact part if necessary.

- 在拆卸维护前,请确认气源、电源全部断开!

Before disassembly and maintenance, please make sure that the gas source and power supply are all disconnected!

- 如有任何不明确的事项,请与我们及时联系,以免造成不必要的损失。

If there are any uncertainties, please contact us in time to avoid unnecessary losses.

## 常见故障及解决方案 Faultand solutions

<p>一、阀门不能开启或一直开启</p> <p>Valves cannot be opened or kept open</p>	
<p>1.1 物料凝结成团块</p> <p>Material coagulates into lumps</p>	<p>拆除阀门彻底清洁并重新安装</p> <p>Remove valve thoroughly clean and reinstall</p>
<p>1.2 阀板承受的重量过大</p> <p>Valve plate bears too much weight</p>	<p>减轻料箱中的物</p> <p>Reduce the weight in the bin</p>
<p>1.3 气动执行机构使用空气压力过低</p> <p>Air pressure of pneumatic actuator is too low</p>	<p>检查压缩空气管路,电磁阀等是否有泄漏</p> <p>Check whether there is leakage in compressed air pipeline, solenoid valve, etc.</p>
<p>1.4 电磁阀损坏</p> <p>Damage of solenoid valve</p>	<p>线圈是否烧坏 ,更换线圈,或更换电磁阀</p> <p>The Whether the coil is burnt out, replace the coil, or replace the solenoid valve</p>
<p>二、阀门泄漏关不严</p> <p>Leakage of valves is not tightly closed</p>	
<p>2.1 阀门不能完全关闭</p> <p>The valve can not be completely closed</p>	<p>关过头则把限位螺栓拧进 1 圈,或多圈; 没关过位则把限位螺栓松出 1 圈,或多圈</p> <p>The limit bolt is screwed into one or more loops at the end of the turn. Release the limit bolt by one or more loops if it is not closed.</p>
<p>2.2 阀座密封件磨损</p> <p>Wear of Seat Seals</p>	<p>更换密封件</p> <p>Replacement of Seals</p>
<p>2.3 执行器寿命用尽</p> <p>Exhaust of actuator life</p>	<p>更换密封件或执行器</p> <p>Replacement of seals or actuators</p>
<p>三、阀位信号失常</p> <p>Valve Position Signal Abnormality.</p>	
<p>3.1 阀位无信号</p> <p>The valve position without signal</p>	<p>查看反馈装置是否调整到位</p> <p>Change wiring sequence</p>
<p>3.2 阀位信号开,关相反</p> <p>Valve position signal on and off opposite</p>	<p>调换接线顺序</p> <p>Change wiring sequence</p>
<p>3.3 反馈装置损坏</p> <p>Damage of Feedback Device</p>	<p>更换反馈装置</p> <p>Replacement of feedback devices</p>
<p>如有上述未提及的故障请与我们联系.</p>	<p>If there are any faults not mentioned above, please contact us.</p>