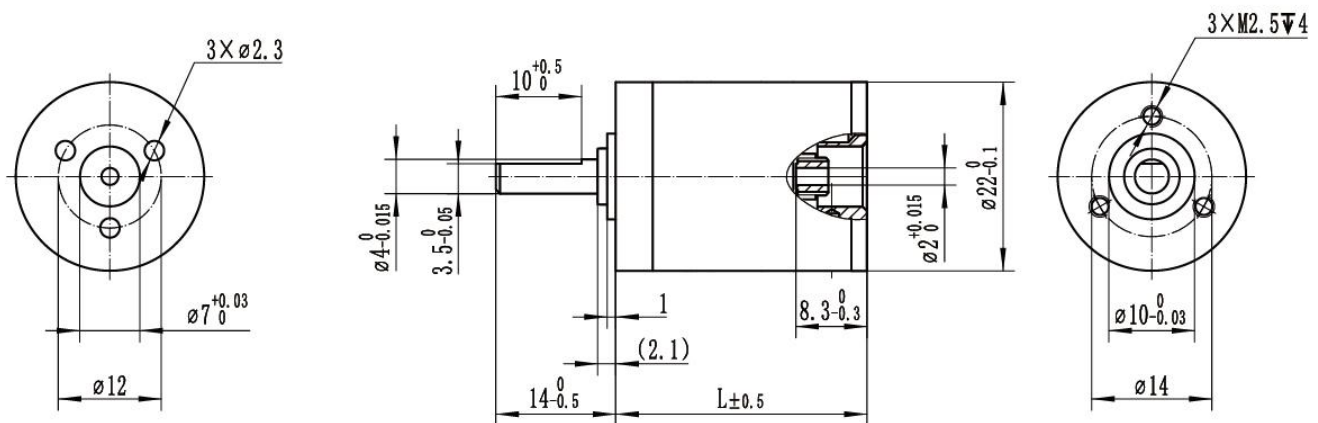


# GPB22H 减速箱

## GPB22H Planetary Gearhead

主要参数 major parameters						
级数 stages		1	2	3	4	5
连续输出扭矩 continuous torque	Nm	0.5	0.5	0.8	1	1
瞬间输出扭矩 intermittent torque	Nm	0.8	0.8	1.2	1.5	1.5
传动效率 efficiency	%	90	81	72	63	55
平均空载回差 Average backlash no load	°	1.0	1.5	2.0	2.0	2.2
长度 L	mm	19.7	25.5	29.3	33.1	36.9
重量 Weight	g					



输出轴材料 Output shaft material	钢 steel
最大输入转速 Max. continuous input speed	10000 rpm
输入输出旋转方向 Direction of rotation, drive to output	=
输出端轴承 Bearing at output	滚珠轴承 ball bearing
最大径向负载-距端面 5mm Max. radial load, 5 mm from flange	30 N
最大轴向负载 Max. axial load	30 N
最大允许安装力 Max. force for press fits	80 N
径向间隙-距端面 5mm Radial play, 5 mm from flange	≤0.1 mm
轴向间隙 Axial play	≤0.2 mm
推荐温度范围 Recommended temperature range	-20...+100 °C

GPB22H 速比表

GPB22H Ratio List

零件号 Part Numbers	减速比 Reduction ratio	级数 Stages
2267001	3.6	1
2267002	4	
2267003	4.6	
2267004	5.5	
2267005	12.8	2
2267006	14.3	
2267007	16.0	
2267008	16.4	
2267009	18.4	
2267010	19.6	
2267011	21.2	
2267012	22.0	
2267013	25.3	
2267014	30.3	
2267015	45.6	3
2267016	51.0	
2267017	57.1	
2267018	58.7	
2267019	64.0	
2267020	65.7	
2267021	70.2	
2267022	73.6	
2267023	75.6	
2267024	78.6	
2267025	84.6	
2267026	88.0	
2267027	90.4	
2267028	97.3	
2267029	101.2	
2267030	108.0	

2267031	116.4	
2267032	121.0	
2267033	139.2	
2267034	166.4	
2267035	162.7	
2267036	182.2	
2267037	204.1	
2267038	209.5	
2267039	228.6	
2267040	234.7	
2267041	250.5	
2267042	256.0	
2267043	262.9	
2267044	269.9	
2267045	280.6	
2267046	294.4	
2267047	302.3	
2267048	314.3	
2267049	322.7	
2267050	338.6	
2267051	347.6	
2267052	352.0	
2267053	361.4	
2267054	385.8	
2267055	389.3	
2267056	404.8	
2267057	415.6	
2267058	432.1	
2267059	447.7	
2267060	465.5	
2267061	484.0	
2267062	497.0	
2267063	535.3	
2267064	556.6	
2267065	594.2	

2267066	640.1	
2267067	665.5	
2267068	765.3	
2267069	915.1	
2267070	581.0	
2267071	650.8	
2267072	728.9	
2267073	748.4	
2267074	816.3	
2267075	838.2	
2267076	894.8	
2267077	914.3	
2267078	938.8	
2267079	963.9	
2267080	1002.2	
2267081	1024.0	
2267082	1051.4	
2267083	1079.6	
2267084	1122.4	
2267085	1152.5	
2267086	1177.6	
2267087	1209.1	
2267088	1241.5	
2267089	1257.1	
2267090	1290.8	
2267091	1354.2	
2267092	1378.0	
2267093	1390.5	
2267094	1408.0	
2267095	1445.7	
2267096	1484.4	
2267097	1543.4	
2267098	1557.4	
2267099	1599.1	
2267100	1619.2	

2267101	1662.6	
2267102	1728.6	
2267103	1774.9	
2267104	1791.0	
2267105	1862.1	
2267106	1912.0	
2267107	1936.0	
2267108	1987.9	
2267109	2059.6	
2267110	2122.1	
2267111	2141.4	
2267112	2226.4	
2267113	2286.0	
2267114	2376.8	
2267115	2462.6	
2267116	2560.4	
2267117	2662.0	
2267118	2733.3	
2267119	2944.4	
2267120	3061.3	
2267121	3268.1	
2267122	3520.5	
2267123	3660.3	