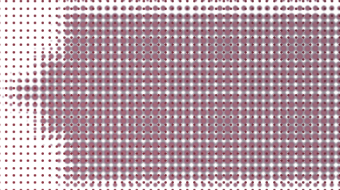
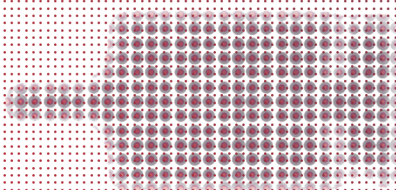
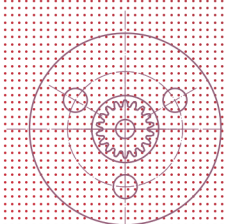


PRECISION DRIVE SYSTEMS

产品系列

CATALOGUE



北京博阳瑞德科技有限公司



我们是一家专业从事精密行星减速器、微电机的研发、制造和销售一体的企业，生产和销售各种电机，减速器，精密五金以及系统集成等。

经过多年的发展，我们拥有高精度的激光测量仪、扭矩测量仪、硬度检测仪器、激光焊接机等先进的生产和检测仪器，可以提供满足客户各种需求的产品。

We are a professional engaged in precision planetary gearhead, micromotor research and development, manufacturing and sales of the enterprise, production and sales of a variety of motor, gearhead, precision hardware and system integration. After many years of development, we have a high-precision Laser measuring instrument, Torque measuring instrument, Hardness testing instruments, Laser welding machine and other advanced production and testing instruments, can provide products to meet the various needs of customers.

Application
应用领域

Industrial

Aerospace
Medical

Robot etc

Professional driver solution provider
为您提供专业得驱动解决方案

Focus Professional Innovative
专注、专业 创新



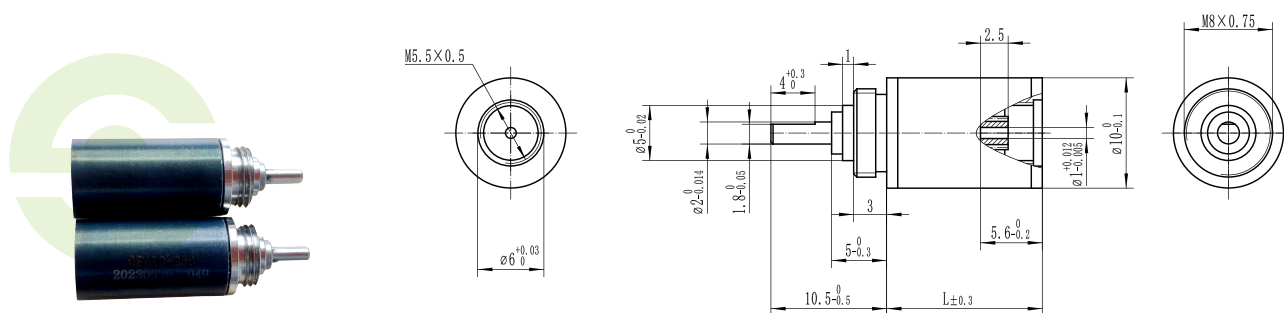
PRECISION PLANETARY GEARHEAD AND SPUR GEARHEAD

精密行星齿轮箱和正齿轮箱

GPA 10 Ø 10mm, 行星齿轮箱 PLANETARY GEARHEAD	04
GPA 12 Ø 12mm, 行星齿轮箱 PLANETARY GEARHEAD	05
GPA 13 Ø 13mm, 行星齿轮箱 PLANETARY GEARHEAD	06
GPA 16 Ø 16mm, 行星齿轮箱 PLANETARY GEARHEAD	07
GPX 16 Ø 16mm, 行星齿轮箱 PLANETARY GEARHEAD	08
GPA 22 Ø 22mm, 行星齿轮箱 PLANETARY GEARHEAD	09
GPB 22H Ø 22mm, 行星齿轮箱 PLANETARY GEARHEAD	10
GPX 22 Ø 22mm, 行星齿轮箱 PLANETARY GEARHEAD	11
GPA 26 Ø 26mm, 行星齿轮箱 PLANETARY GEARHEAD	12
GPA 28 Ø 28mm, 行星齿轮箱 PLANETARY GEARHEAD	13
GP 28 H Ø 28mm, 行星齿轮箱 PLANETARY GEARHEAD	14
GPA 32 Ø 32mm, 行星齿轮箱 PLANETARY GEARHEAD	15
GPB 32 Ø 32mm, 行星齿轮箱 PLANETARY GEARHEAD	16
GPX 32 Ø 32mm, 行星齿轮箱 PLANETARY GEARHEADc	17
GPA 35 Ø 35mm, 行星齿轮箱 PLANETARY GEARHEAD	18
GPA 42 Ø 42mm, 行星齿轮箱 PLANETARY GEARHEAD	19
GPB 42 Ø 42mm, 行星齿轮箱 PLANETARY GEARHEAD	20
GPA 52 Ø 52mm, 行星齿轮箱 PLANETARY GEARHEAD	21

GPA 10 PLANETARY GEARHEAD

GPA10 Ø 10mm, 行星减速器



GPA10 RATIO LIST

级数 Stage	1	2	3	4	5
订货号 Order No.	1066001	1066002	1066003	1066004	1066005
减速比 Reduction ratio	4	16	64	256	1024

主要参数 MAJOR PARAMETERS

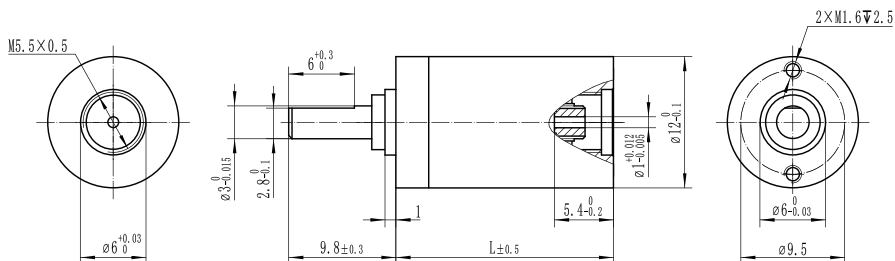
级数 Stages [可配置]		1	2	3	4	5
连续输出扭矩 Continuous torque	Nm	0.01	0.03	0.1	0.15	0.15
瞬时输出扭矩 Intermittent torque	Nm	0.02	0.05	0.15	0.2	0.2
传动效率 Efficiency	%	90	81	72	63	55
平均空载回差 Average backlash no load	°	1.5	1.8	2.0	2.2	2.5
长度 Length	mm	11	14.1	17.2	20.4	23.5
重量 Weight	g	5.2	7	8.5	9	10

减速箱参数

输出轴材料	Output shaft material	钢 steel
推荐最大输入转速	Recommended max. input speed for:	
最大输入转速	Max. continuous input speed	12000 rpm
输入输出旋转方向	Direction of rotation, drive to output	=
输出端轴承	Bearing at output	滚珠轴承 ball bearing
输出轴负载	Shaft load, max.	
最大径向负载-距端面5mm	Max. radial load, 5 mm from flange	5N
最大轴向负载	Max. axial load	5N
最大允许安装力	Max. force for press fits	10N
输出轴间隙	Shaft play	
径向间隙-距端面5mm	Radial play, 5 mm from flange	≤0.1 mm
轴向间隙	Axial play	≤0.2 mm
推荐温度范围	Recommended temperature range	-20°C+100 °C

GPA 12 PLANETARY GEARHEAD

GPA12 Ø 12mm, 行星减速器



GPA12 RATIO LIST

级数	Stage	1				
订货号	Order No.	1266001	1266002	1266003	1266004	
减速比	Reduction ratio	3.5	4	4.75	6	
级数	Stage	2				
订货号	Order No.	1266005	1266006	1266007	1266008	1266009 —— 012
减速比	Reduction ratio	12.3	14	16	16.6	19 —— 36
级数	Stage	3				
订货号	Order No.	1266013	1266014	1266015	1266016	1266017 —— 031
减速比	Reduction ratio	42.9	49	56	58.2	64 —— 216
级数	Stage	4				
订货号	Order No.	1266032	1266033	1266034	1266035	1266036 ____ 062
减速比	Reduction ratio	150.1	171.5	196	203.7	224 —— 812.3
级数	Stage	5				
订货号	Order No.	1266063	1266064	1266065	1266066	1266067 —— 114
减速比	Reduction ratio	525.2	600.3	686	712.8	784 —— 4873.5

减速比洋询销售

主要参数 MAJOR PARAMETERS

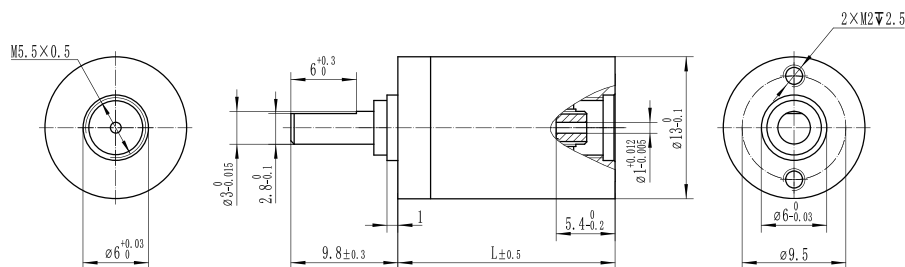
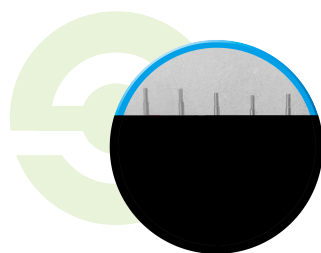
级数 Stages	[可配置]	1	2	3	4	5
连续输出扭矩 Continuous torque	Nm	0.2	0.2	0.3	0.3	0.35
瞬时输出扭矩 Intermittent torque	Nm	0.3	0.3	0.45	0.45	0.5
传动效率 Efficiency	%	90	81	72	63	55
平均空载回差 Average backlash no load	°	1.5	2.0	2.0	2.2	2.5
长度 Length	mm	14.3	17.1	19.9	22.7	25.5
重量 Weight	g	6.5	9.5	12.5	15.5	19.5

减速箱参数

输出轴材料	Output shaft material	钢 Steel
推荐最大输入转速	Recommended max. input speed for:	
最大输入转速	Max. continuous input speed	12000 rpm
输入输出旋转方向	Direction of rotation, drive to output	=
输出端轴承	Bearing at output	滚珠轴承 Ball bearing
输出轴负载	Shaft load, max.	
最大径向负载-距端面5mm	Max. radial load, 5 mm from flange	8N
最大轴向负载	Max. axial load	8N
最大允许安装力	Max. force for press fits	10N
输出轴间隙	Shaft play	
径向间隙-距端面5mm	Radial play, 5 mm from flange	≤0.1 mm
轴向间隙	Axial play	≤0.2 mm
推荐温度范围	Recommended temperature range	-20°C +100 °C

GPA13 PLANETARY GEARHEAD

GPA13 Ø 13mm, 行星减速器



GPA13 RATIO LIST

级数	Stage	1				
订货号	Order No.	1366001	1366002	1366003	1366004	
减速比	Reduction ratio	3.5	4	4.75	6	
级数	Stage	2				
订货号	Order No.	1366005	1366006	1366007	1366008	1366009 —— 012
减速比	Reduction ratio	12.3	14	16	16.6	19 —— 36
级数	Stage	3				
订货号	Order No.	1366013	1366014	1366015	1366016	1366017 —— 031
减速比	Reduction ratio	42.9	49	56	58.2	64 —— 216
级数	Stage	4				
订货号	Order No.	1366032	1366033	1366034	1366035	1366036 —— 062
减速比	Reduction ratio	150.1	171.5	196	203.7	224 —— 812.3
级数	Stage	5				
订货号	Order No.	1366063	1366064	1366065	1366066	1366067 —— 114
减速比	Reduction ratio	525.2	600.3	686	712.8	784 —— 4873.5

减速比洋询销售

主要参数 MAJOR PARAMETERS

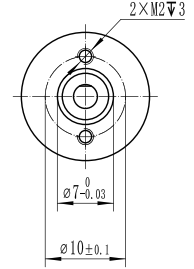
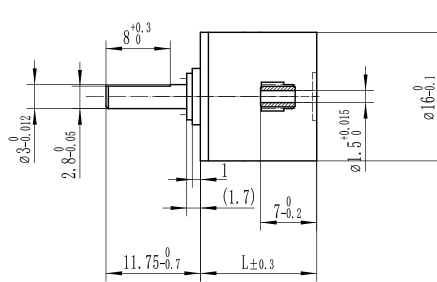
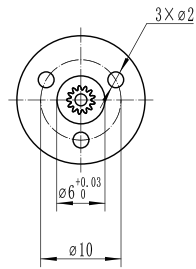
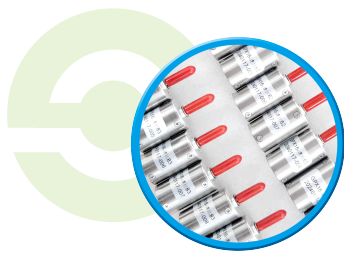
级数 Stages	可配置	1	2	3	4	5
连续输出扭矩 Continuous torque	Nm	0.2	0.2	0.3	0.3	0.35
瞬时输出扭矩 Intermittent torque	Nm	0.3	0.3	0.45	0.45	0.5
传动效率 Efficiency	%	90	81	72	63	55
平均空载回差 Average backlash no load	°	1.5	2.0	2.0	2.2	2.5
长度 Length	mm	14.3	17.1	19.9	22.7	25.5
重量 Weight	g	7	10	13	16	20

减速箱参数

输出轴材料	Output shaft material	钢 Steel
推荐最大输入转速	Recommended max. input speed for:	
最大输入转速	Max. continuous input speed	12000 rpm
输入输出旋转方向	Direction of rotation, drive to output	=
输出端轴承	Bearing at output	滚珠轴承 Ball bearing
输出轴负载	Shaft load, max.	
最大径向负载-距端面5mm	Max. radial load, 5 mm from flange	8N
最大轴向负载	Max. axial load	8N
最大允许安装力	Max. force for press fits	10N
输出轴间隙	Shaft play	
径向间隙-距端面5mm	Radial play, 5 mm from flange	≤0.1 mm
轴向间隙	Axial play	≤0.2 mm
推荐温度范围	Recommended temperature range	-20°C+100 °C

GPA 16 PLANETARY GEARHEAD

GPA16 Ø 16mm, 行星减速器



GPA16 RATIO LIST

级数	Stage	1				
订货号	Order No.	1666001	1666002	1666003	1666004	
减速比	Reduction ratio	3.55	3.95	5.31	6.60	
级数	Stage	2				
订货号	Order No.	1666005	1666006	1666007	1666008	1666009 — 013
减速比	Reduction ratio	13	14	16	19	21 — 44
级数	Stage	3				
订货号	Order No.	1666014	1666015	1666016	1666017	1666018 — 031
减速比	Reduction ratio	45	50	55	62	67 — 287
级数	Stage	4				
订货号	Order No.	1666032	1666033	1666034	1666035	1666036 — 062
减速比	Reduction ratio	158	176	196	218	237 — 1526
级数	Stage	5				
订货号	Order No.	1666075	1666076	1666077	1666078	1666079 — 106
减速比	Reduction ratio	1293	1398	1439	1556	1561 — 6513

减速比详询销售

主要参数 MAJOR PARAMETERS

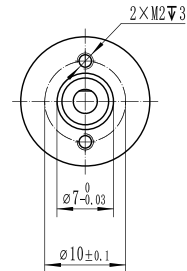
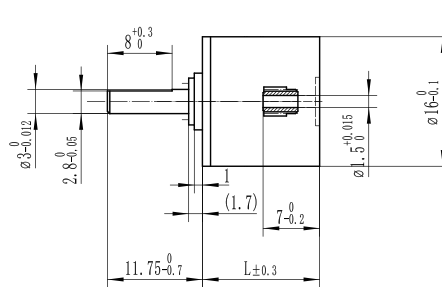
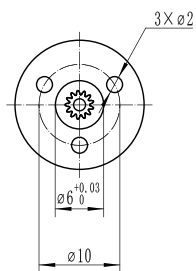
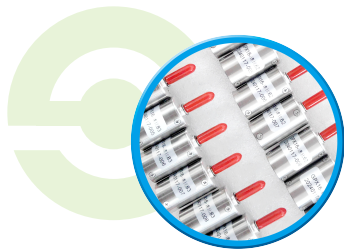
级数 Stages	可配置	1	2	3	4	5
连续输出扭矩 Continuous torque	Nm	0.2	0.25	0.35	0.45	
瞬时输出扭矩 Intermittent torque	Nm	0.3	0.35	0.5	0.6	
传动效率 Efficiency	%	90	81	72	63	
平均空载回差 Average backlash no load	°	1.5	2.0	2.0	2.2	
长度 Length	mm	14.5	18.8	25.2	29.5	
重量 Weight	g	11	17	23.3	30	

减速箱参数

输出轴材料	Output shaft material	钢 Steel
推荐最大输入转速	Recommended max. input speed for:	
最大输入转速	Max. continuous input speed	12000 rpm
输入输出旋转方向	Direction of rotation, drive to output	=
输出端轴承	Bearing at output	滚珠轴承 Ball bearing
输出轴负载	Shaft load, max.	
最大径向负载-距端面5mm	Max. radial load, 5 mm from flange	8N
最大轴向负载	Max. axial load	8N
最大允许安装力	Max. force for press fits	10N
输出轴间隙	Shaft play	
径向间隙-距端面5mm	Radial play, 5 mm from flange	≤0.1 mm
轴向间隙	Axial play	≤0.2 mm
推荐温度范围	Recommended temperature range	-20°C + 100 °C

GPX 16 PLANETARY GEARHEAD

GPX16 Ø 16mm, 行星减速器



GPX16 RATIO LIST

级数	Stage	1				
订货号	Order No.	1668001	1668001	1666003	1666004	
减速比	Reduction ratio	3.55	3.95	5.31	6.60	
级数	Stage	2				
订货号	Order No.	1666005	1666006	1666007	1666008	1666009 —— 013
减速比	Reduction ratio	13	14	16	19	21 —— 44
级数	Stage	3				
订货号	Order No.	1666014	1666015	1666016	1666017	1666018 —— 031
减速比	Reduction ratio	45	50	55	62	67 —— 287
级数	Stage	4				
订货号	Order No.	1666032	1666033	1666034	1666035	1666036 ____ 062
减速比	Reduction ratio	158	176	196	218	237 —— 1526
级数	Stage	5				
订货号	Order No.	1666075	1666076	1666077	1666078	1666079 ____ 106
减速比	Reduction ratio	1293	1398	1439	1556	1561 —— 6513

减速比详询销售

主 要 参 数 MAJOR PARAMETERS

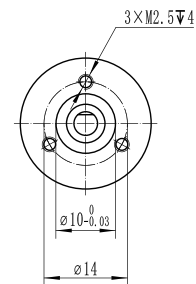
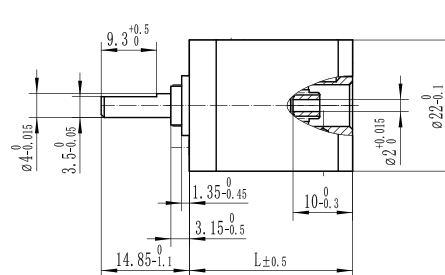
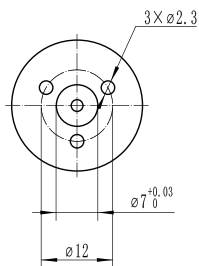
级数 Stages	[可配置]	1	2	3	4	5
连续输出扭矩 Continuous torque	Nm	0.25	0.35	0.5	0.6	
瞬时输出扭矩 Intermittent torque	Nm	0.35	0.5	0.7	0.8	
传动效率 Efficiency	%	90	81	72	63	
平均空载回差 Average backlash no load	°	1.5	2.0	2.0	2.2	
长 度 Length	mm	16.5	20.8	27.2	31.5	
重 量 Weight	g	11	17	23.3	30	

减速箱参数

输出轴材料	Output shaft material	钢 Steel
推荐最大输入转速	Recommended max. input speed for:	
最大输入转速	Max. continuous input speed	12000 rpm
输入输出旋转方向	Direction of rotation, drive to output	=
输出端轴承	Bearing at output	滚珠轴承 Ball bearing
输出轴负载	Shaft load, max.	
最大径向负载-距端面5mm	Max. radial load, 5 mm from flange	20N
最大轴向负载	Max. axial load	20N
最大允许安装力	Max. force for press fits	30N
输出轴间隙	Shaft play	
径向间隙-距端面5mm	Radial play, 5 mm from flange	≤0.1 mm
轴向间隙	Axial play	≤0.2 mm
推荐温度范围	Recommended temperature range	-20°C +100 °C

GPA 22 PLANETARY GEARHEAD

GPA22 Ø 22mm, 行星减速器



GPA22 RATIO LIST

级数	Stage	1				
订货号	Order No.	2266001	2266002	2266003	2266004	2266005
减速比	Reduction ratio	3.30	3.71	4.29	5.18	6.75
级数	Stage	2				
订货号	Order No.	2266006	2266007	2266008	2266010	2266011 ——020
减速比	Reduction ratio	11	12	14	16	17 —— 46
级数	Stage	3				
订货号	Order No.	2266022	2266023	2266024	2266025	2266026 —— 054
减速比	Reduction ratio	40	45	47	51	52 —— 236
级数	Stage	4				
订货号	Order No.	2266058	2266059	2266060	2266061	2266062 —— 123
减速比	Reduction ratio	150	154	168	173	186 —— 1318
级数	Stage	5				
订货号	Order No.	2266129	2266130	2266131	2266132	2266133 —— 248
减速比	Reduction ratio	508	554	571	615	622 —— 8258

减速比详询销售

主要参数 MAJOR PARAMETERS

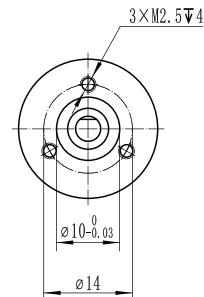
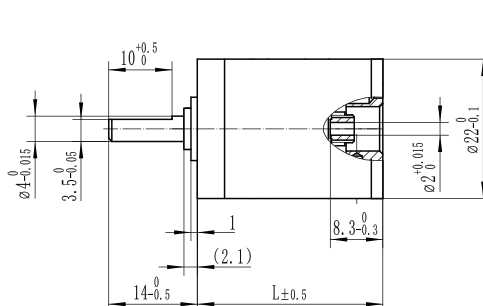
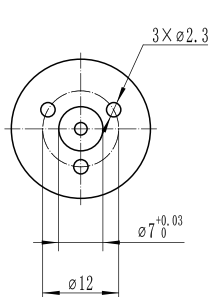
级数 Stages	[可配置]	1	2	3	4	5
连续输出扭矩 Continuous torque	Nm	0.5	0.6	1.2	1.2	1.5
瞬时输出扭矩 Intermittent torque	Nm	0.8	0.9	1.8	1.8	2.2
传动效率 Efficiency	%	90	81	72	63	55
平均空载回差 Average backlash no load	°	1.0	1.5	2.0	2.0	2.2
长度 Length	mm	22.9	27.4	34.4	38.9	43.4
重量 Weight	g	27	42	57	72	87

减速箱参数

输出轴材料	Output shaft material	钢 Steel
推荐最大输入转速	Recommended max. input speed for:	
最大输入转速	Max. continuous input speed	10000 rpm
输入输出旋转方向	Direction of rotation, drive to output	=
输出端轴承	Bearing at output	滚珠轴承 Ball bearing
输出轴负载	Shaft load, max.	
最大径向负载-距端面5mm	Max. radial load, 5 mm from flange	50N
最大轴向负载	Max. axial load	50N
最大允许安装力	Max. force for press fits	80N
输出轴间隙	Shaft play	
径向间隙-距端面5mm	Radial play, 5 mm from flange	≤0.1 mm
轴向间隙	Axial play	≤0.2 mm
推荐温度范围	Recommended temperature range	-20°C+100 °C

GPB 22H PLANETARY GEARHEAD

GPB22H Ø 22mm, 行星减速器



GPB22H RATIO LIST

级数	Stage	1				
订货号	Order No.	2267001	2267002	2267003	2267004	
减速比	Reduction ratio	3.6	4	4.6	5.5	
级数	Stage	2				
订货号	Order No.	2267005	2267006	2267007	2267008	2267009 —— 014
减速比	Reduction ratio	12.8	14.3	16.0	16.4	18.4 —— 30.3
级数	Stage	3				
订货号	Order No.	2267015	2267016	2267017	2267018	2267019 —— 034
减速比	Reduction ratio	45.6	51.0	57.1	58.7	64.0 —— 166.4
级数	Stage	4				
订货号	Order No.	2267035	2267036	2267037	2267038	2267039 —— 069
减速比	Reduction ratio	162.7	182.2	204.1	209.5	228.6 —— 915.1
级数	Stage	5				
订货号	Order No.	2267070	2267071	2267072	2267073	2267074 —— 123
减速比	Reduction ratio	581.0	650.8	728.9	748.4	816.3 —— 3660.3

减速比详询销售

主要参数 MAJOR PARAMETERS

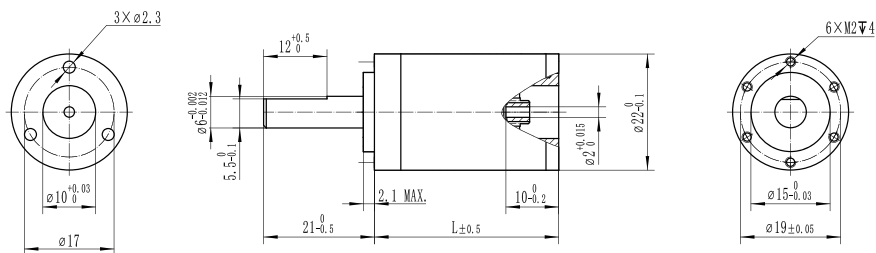
级数 Stages	[可配置]	1	2	3	4	5
连续输出扭矩 Continuous torque	Nm	0.5	0.5	0.8	1	1
瞬时输出扭矩 Intermittent torque	Nm	0.8	0.8	1.2	1.5	1.5
传动效率 Efficiency	%	90	81	72	63	55
平均空载回差 Average backlash no load	°	1.0	1.5	2.0	2.0	2.2
长度 Length	mm	19.7	25.5	29.3	33.1	36.9
重量 Weight	g	27	42	57	72	87

减速箱参数

输出轴材料	Output shaft material	钢 Steel
推荐最大输入转速	Recommended max. input speed for:	
最大输入转速	Max. continuous input speed	10000 rpm
输入输出旋转方向	Direction of rotation, drive to output	=
输出端轴承	Bearing at output	滚珠轴承 Ball bearing
输出轴负载	Shaft load, max.	
最大径向负载-距端面5mm	Max. radial load, 5 mm from flange	30N
最大轴向负载	Max. axial load	30N
最大允许安装力	Max. force for press fits	80N
输出轴间隙	Shaft play	
径向间隙-距端面5mm	Radial play, 5 mm from flange	≤0.1 mm
轴向间隙	Axial play	≤0.2 mm
推荐温度范围	Recommended temperature range	-20°C +100 °C

GPX 22 PLANETARY GEARHEAD

GPX22 Ø 22mm, 行星减速器



GPX22 RATIO LIST

级数	Stage	1				
订货号	Order No.	2268001	2268002	2268003	2268004	2268005
减速比	Reduction ratio	3.30	3.71	4.29	5.18	6.75
级数	Stage	2				
订货号	Order No.	2268006	2268007	2268008	2268010	2268011 —— 020
减速比	Reduction ratio	11	12	14	16	17 —— 46
级数	Stage	3				
订货号	Order No.	2268022	2268023	2268024	2268025	2268026 —— 054
减速比	Reduction ratio	40	45	47	51	52 —— 236
级数	Stage	4				
订货号	Order No.	2268058	2268059	2268060	2268061	2268062 —— 123
减速比	Reduction ratio	150	154	168	173	186 —— 1318
级数	Stage	5				
订货号	Order No.	2268129	2268130	2268131	2268132	2268133 —— 248
减速比	Reduction ratio	508	554	571	615	622 —— 8258

减速比详询销售

主要参数 MAJOR PARAMETERS

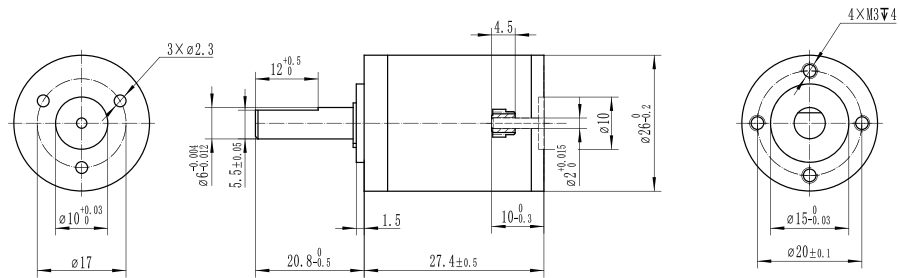
级数 Stages	[可配置]	1	2	3	4	5
连续输出扭矩 Continuous torque	Nm	0.8	1	2	2	2.5
瞬时输出扭矩 Intermittent torque	Nm	1.2	1.5	3	3	3.5
传动效率 Efficiency	%	90	81	72	63	55
平均空载回差 Average backlash no load	°	1.0	1.5	2.0	2.0	2.2
长度 Length	mm	23.4	27.9	34.9	39.4	43.9
重量 Weight	g	27	42	57	72	87

减速箱参数

输出轴材料	Output shaft material	钢 Steel
推荐最大输入转速	Recommended max. input speed for:	
最大输入转速	Max. continuous input speed	8000 rpm
输入输出旋转方向	Direction of rotation, drive to output	=
输出端轴承	Bearing at output	滚珠轴承 Ball bearing
输出轴负载	Shaft load, max.	
最大径向负载-距端面5mm	Max. radial load, 5 mm from flange	80N
最大轴向负载	Max. axial load	80N
最大允许安装力	Max. force for press fits	100N
输出轴间隙	Shaft play	
径向间隙-距端面5mm	Radial play, 5 mm from flange	≤0.1 mm
轴向间隙	Axial play	≤0.2 mm
推荐温度范围	Recommended temperature range	-40°C + 100 °C

GPA 26 PLANETARY GEARHEAD

GPA26 Ø 26mm, 行星减速器



GPA26 RATIO LIST

级数	Stage	1				
订货号	Order No.	2666001	2666002	2666003	2666004	2666005
减速比	Reduction ratio	3.30	3.71	4.29	5.18	6.75
级数	Stage	2				
订货号	Order No.	2666006	2666007	2666008	2666010	2666011 —— 020
减速比	Reduction ratio	11	12	14	16	17 —— 46
级数	Stage	3				
订货号	Order No.	2666022	2666023	2666024	2666025	2666026 —— 054
减速比	Reduction ratio	40	45	47	51	52 —— 236
级数	Stage	4				
订货号	Order No.	2666058	2666059	2666060	2666061	2666062 —— 123
减速比	Reduction ratio	150	154	168	173	186 —— 1318
级数	Stage	5				
订货号	Order No.	2666129	2666130	2666131	2666132	2666133 —— 248
减速比	Reduction ratio	508	554	571	615	622 —— 8258

减速比详询销售

主要参数 MAJOR PARAMETERS

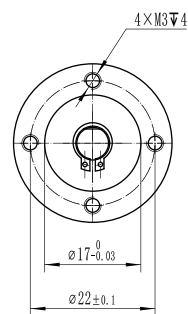
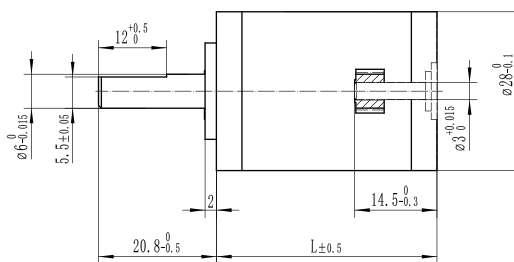
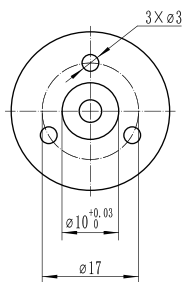
级数 Stages	[可配置]	1	2	3	4	5
连续输出扭矩 Continuous torque	Nm	0.7	0.9	1.5	2	2.5
瞬时输出扭矩 Intermittent torque	Nm	1.1	1.3	3	3	4
传动效率 Efficiency	%	90	81	72	63	55
平均空载回差 Average backlash no load	°	1.0	1.5	2.0	2.0	2.2
长度 Length	mm	22.9	27.4	34.4	38.9	43.4
重量 Weight	g	47	67	87	107	127

减速箱参数

输出轴材料	Output shaft material	钢 Steel
推荐最大输入转速	Recommended max. input speed for:	
最大输入转速	Max. continuous input speed	8000 rpm
输入输出旋转方向	Direction of rotation, drive to output	=
输出端轴承	Bearing at output	滚珠轴承 Ball bearing
输出轴负载	Shaft load, max.	
最大径向负载-距端面5mm	Max. radial load, 5 mm from flange	80N
最大轴向负载	Max. axial load	80N
最大允许安装力	Max. force for press fits	100N
输出轴间隙	Shaft play	
径向间隙-距端面5mm	Radial play, 5 mm from flange	≤0.1 mm
轴向间隙	Axial play	≤0.2 mm
推荐温度范围	Recommended temperature range	-20°C +100 °C

GPA 28 PLANETARY GEARHEAD

GPA28 Ø 28mm, 行星减速器



GPA28 RATIO LIST

级数	Stage	1				
订货号	Order No.	2866001	2866002	2866003	2866004	2866005
减速比	Reduction ratio	3.30	3.71	4.29	5.18	6.75
级数	Stage	2				
订货号	Order No.	2866006	2866007	2866008	2866010	2866011 — 020
减速比	Reduction ratio	11	12	14	16	17 — 46
级数	Stage	3				
订货号	Order No.	2866022	2866023	2866024	2866025	2866026 — 054
减速比	Reduction ratio	40	45	47	51	52 — 236
级数	Stage	4				
订货号	Order No.	2866058	2866059	2866060	2866061	2866062 — 123
减速比	Reduction ratio	150	154	168	173	186 — 1318
级数	Stage	5				
订货号	Order No.	2866129	2866130	2866131	2866132	2866133 — 248
减速比	Reduction ratio	508	554	571	615	622 — 8258

减速比详询销售

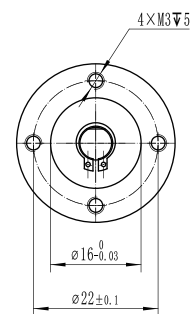
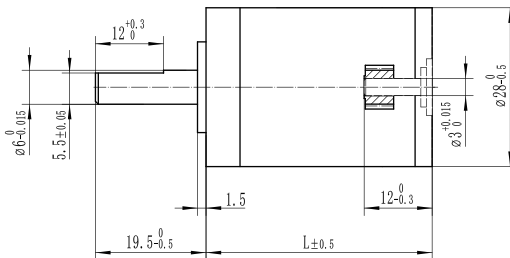
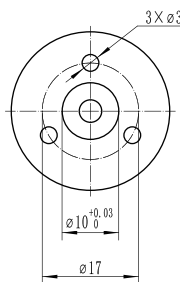
主要参数 MAJOR PARAMETERS

级数 Stages	[可配置]	1	2	3	4	5
连续输出扭矩 Continuous torque	Nm	0.8	1.2	1.5	2	2.5
瞬时输出扭矩 Intermittent torque	Nm	1.2	1.5	2	3	4
传动效率 Efficiency	%	90	81	72	63	55
平均空载回差 Average backlash no load	°	1.0	1.5	2.0	2.0	2.2
长度 Length	mm	27.4	34.4	38.9	43.4	47.9
重量 Weight	g	69	84	109	134	159

减速箱参数

输出轴材料	Output shaft material	钢 Steel
推荐最大输入转速	Recommended max. input speed for:	
最大输入转速	Max. continuous input speed	8000 rpm
输入输出旋转方向	Direction of rotation, drive to output	=
输出端轴承	Bearing at output	滚珠轴承 Ball bearing
输出轴负载	Shaft load, max.	
最大径向负载-距端面5mm	Max. radial load, 5 mm from flange	80N
最大轴向负载	Max. axial load	80N
最大允许安装力	Max. force for press fits	100N
输出轴间隙	Shaft play	
径向间隙-距端面5mm	Radial play, 5 mm from flange	≤0.1 mm
轴向间隙	Axial play	≤0.2 mm
推荐温度范围	Recommended temperature range	-20°C + 100 °C

GPB 28 H \varnothing 28mm, 行星减速器



GPB28H RATIO LIST

级数	Stage	1				
订货号	Order No.	2867001	2867002	2867003	2867004	2867005
减速比	Reduction ratio	3.6	4.0	4.6	5.5	7.0
级数	Stage	2				
订货号	Order No.	2867006	2867007	2867008	2867009	2867010 —— 019
减速比	Reduction ratio	12.8	14.3	16.0	16.4	18.4 —— 49.0
级数	Stage	3				
订货号	Order No.	2867020	2867021	2867022	2867023	2867024 —— 052
减速比	Reduction ratio	45.6	51.0	57.1	58.7	64.0 —— 343.0
级数	Stage	4				
订货号	Order No.	2867053	2867054	2867055	2867056	2867057 —— 117
减速比	Reduction ratio	162.7	182.2	204.1	209.5	228.6 —— 1577.8
级数	Stage	5				
订货号	Order No.	2867122	2867123	2867124	2867125	2867126 —— 248
减速比	Reduction ratio	728.9	748.4	816.3	838.2	894.8 —— 8152.4

減速比詳詢銷售

主要参数 MAJOR PARAMETERS

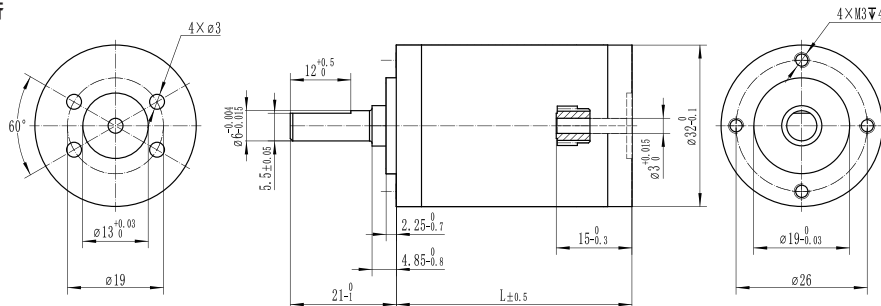
级数 Stages [可配置]		1	2	3	4	5
连续输出扭矩 Continuous torque	Nm	1.0	2.0	3.0	4.0	4.5
瞬时输出扭矩Intermittent torque	Nm	1.5	3.0	4.5	6.0	6.5
传动效率 Efficiency	%	90	81	72	63	55
平均空载回差Average backlash no load	°	1.0	1.5	2.0	2.0	2.2
长 度 Length	mm	26.8	34.6	39.9	45.2	50.5
重 量 Weight	g	69	84	109	134	159

减速箱参数

输出轴材料	Output shaft material	钢 Steel
推荐最大输入转速	Recommended max. input speed for:	
最大输入转速	Max. continuous input speed	8000 rpm
输入输出旋转方向	Direction of rotation, drive to output	=
输出端轴承	Bearing at output	滚珠轴承 Ball bearing
输出轴负载	Shaft load, max.	
最大径向负载-距端面5mm	Max. radial load, 5 mm from flange	80N
最大轴向负载	Max. axial load	80N
最大允许安装力	Max. force for press fits	100N
输出轴间隙	Shaft play	
径向间隙-距端面5mm	Radial play, 5 mm from flange	≤0.1 mm
轴向间隙	Axial play	≤0.1 mm
推荐温度范围	Recommended temperature range	-20°C+100 °C

GPA32 PLANETARY GEARHEAD

GPA32 Ø 32mm, 行星减速器



GPA32 RATIO LIST

级数	Stage	1				
订货号	Order No.	3266001	3266002	3266003	3266004	3266005
减速比	Reduction ratio	3.11	3.71	4.80	5.75	7.33
级数	Stage	2				
订货号	Order No.	3266006	3266007	3266008	3266009	3266010 —— 014
减速比	Reduction ratio	10	12	14	15	18 —— 33
级数	Stage	3				
订货号	Order No.	3266015	3266016	3266017	3266018	3266019 —— 032
减速比	Reduction ratio	30	36	43	46	51 —— 190
级数	Stage	4				
订货号	Order No.	3266033	3266034	3266035	3266036	3266037 —— 063
减速比	Reduction ratio	94	112	134	145	159 —— 913
级数	Stage	5				
订货号	Order No.	3266067	3266068	3266069	3266070	3266071 —— 114
减速比	Reduction ratio	415	450	496	537	592 —— 4380

减速比详询销售

主要参数 MAJOR PARAMETERS

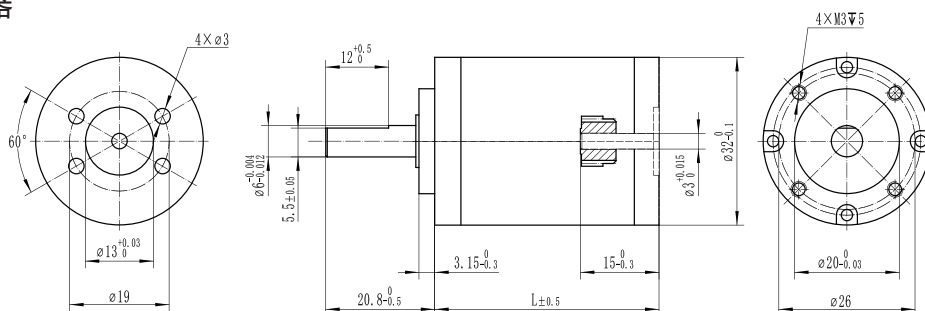
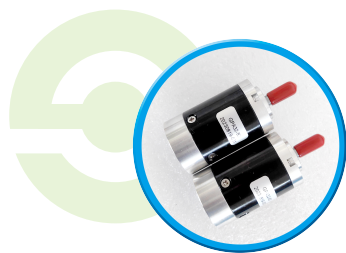
级数 Stages	[可配置]	1	2	3	4	5
连续输出扭矩 Continuous torque	Nm	1.2	2.5	4.5	6.0	6.0
瞬时输出扭矩 Intermittent torque	Nm	1.8	3.5	6.5	7.5	7.5
传动效率 Efficiency	%	90	81	72	63	55
平均空载回差 Average backlash no load	°	1.0	1.2	1.5	1.5	1.8
长度 Length	mm	30.5	40	46.7	53.4	60.1
重量 Weight	g	110.6	147.6	177.6	207.6	237.6

减速箱参数

输出轴材料	Output shaft material	钢 Steel
推荐最大输入转速	Recommended max. input speed for:	
最大输入转速	Max. continuous input speed	8000 rpm
输入输出旋转方向	Direction of rotation, drive to output	=
输出端轴承	Bearing at output	滚珠轴承 Ball bearing
输出轴负载	Shaft load, max.	
最大径向负载-距端面5mm	Max. radial load, 5 mm from flange	120N
最大轴向负载	Max. axial load	120N
最大允许安装力	Max. force for press fits	120N
输出轴间隙	Shaft play	
径向间隙-距端面5mm	Radial play, 5 mm from flange	≤0.1 mm
轴向间隙	Axial play	≤0.1 mm
推荐温度范围	Recommended temperature range	-20°C + 100 °C

GPB 32 PLANETARY GEARHEAD

GPB32 Ø 32mm, 行星减速器



GPB32 RATIO LIST

级数	Stage	1				
订货号	Order No.	3267001	3267002	3267003	3267004	
减速比	Reduction ratio	3.30	3.71	5.18	6.75	
级数	Stage	2				
订货号	Order No.	3267005	3267006	3267007	3267008	3267009 —— 014
减速比	Reduction ratio	11	12	14	17	19 —— 46
级数	Stage	3				
订货号	Order No.	3267015	3267016	3267017	3267018	3267019 —— 031
减速比	Reduction ratio	36	40	45	51	56 —— 236
级数	Stage	4				
订货号	Order No.	3267034	3267035	3267036	3267037	3267038 —— 062
减速比	Reduction ratio	133	150	168	186	189 —— 1223
级数	Stage	5				
订货号	Order No.	3267068	3267069	3267070	3267071	3267072 —— 114
减速比	Reduction ratio	554	615	622	690	699 —— 8258

减速比详询销售

主要参数 MAJOR PARAMETERS

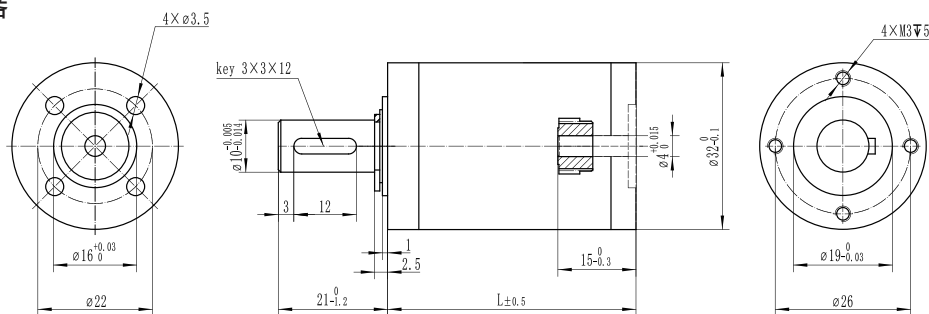
级数 Stages	[可配置]	1	2	3	4	5
连续输出扭矩 Continuous torque	Nm	1.2	2.0	3.75	4.5	4.5
瞬时输出扭矩 Intermittent torque	Nm	1.8	3.0	5.0	6.5	6.5
传动效率 Efficiency	%	90	81	72	63	55
平均空载回差 Average backlash no load	°	1.0	1.5	2.0	2.0	2.2
长度 Length	mm	27	35.8	42.8	49.6	56.4
重量 Weight	g	110.6	147.6	177.6	207.6	237.6

减速箱参数

输出轴材料	Output shaft material	钢 Steel
推荐最大输入转速	Recommended max. input speed for:	
最大输入转速	Max. continuous input speed	8000 rpm
输入输出旋转方向	Direction of rotation, drive to output	=
输出端轴承	Bearing at output	滚珠轴承 Ball bearing
输出轴负载	Shaft load, max.	
最大径向负载-距端面5mm	Max. radial load, 5 mm from flange	120N
最大轴向负载	Max. axial load	120N
最大允许安装力	Max. force for press fits	120N
输出轴间隙	Shaft play	
径向间隙-距端面5mm	Radial play, 5 mm from flange	≤0.1 mm
轴向间隙	Axial play	≤0.2 mm
推荐温度范围	Recommended temperature range	-20°C + 100 °C

GPX 32 Planetary gearhead

GPX32 Ø 32mm, 行星减速器



GPX32 RATIO LIST

级数	Stage	1				
订货号	Order No.	3268001	3268002	3268003	3268004	3268005
减速比	Reduction ratio	3.11	3.71	4.80	5.75	7.33
级数	Stage	2				
订货号	Order No.	3268006	3268007	3268008	3268009	3268010 — 014
减速比	Reduction ratio	10	12	14	15	18 — 33
级数	Stage	3				
订货号	Order No.	3268015	3268016	3268017	3268018	3268019 — 031
减速比	Reduction ratio	30	36	43	46	51 — 159
级数	Stage	4				
订货号	Order No.	3268033	3268034	3268035	3268036	3268037 — 063
减速比	Reduction ratio	94	112	134	145	159 — 913
级数	Stage	5				
订货号	Order No.	3268067	3268068	3268069	3268070	3268071 — 114
减速比	Reduction ratio	415	450	496	537	592 — 4380

减速比详询销售

主要参数 MAJOR PARAMETERS

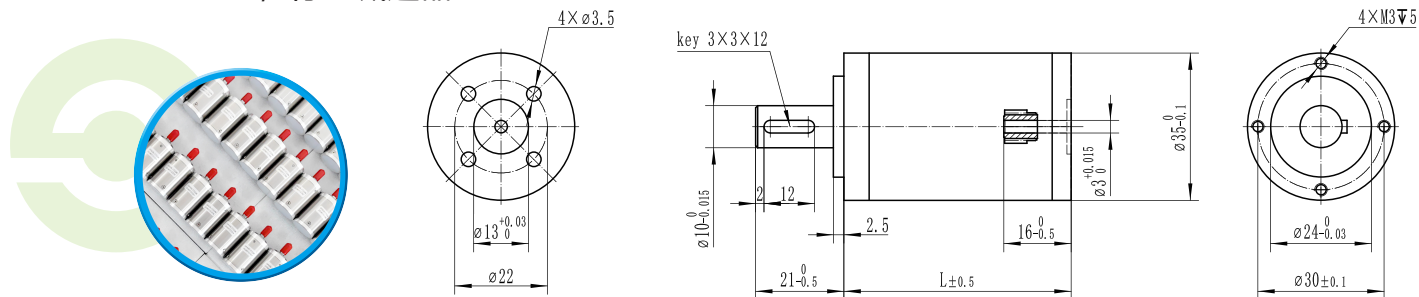
级数 Stages [可配置]		1	2	3	4	5
连续输出扭矩 Continuous torque	Nm	2.0	4.0	8	8	8
瞬时输出扭矩 Intermittent torque	Nm	3.0	6.0	12	12	12
传动效率 Efficiency	%	90	81	72	63	55
平均空载回差 Average backlash no load	°	0.8	1.0	1.0	1.5	1.5
长度 Length	mm	31.5	41	47.7	54.4	61.1
重量 Weight	g	110.6	147.6	177.6	207.6	237.6

减速箱参数

输出轴材料	Output shaft material	钢 Steel
推荐最大输入转速	Recommended max. input speed for:	
最大输入转速	Max. continuous input speed	8000 rpm
输入输出旋转方向	Direction of rotation, drive to output	=
输出端轴承	Bearing at output	滚珠轴承 Ball bearing
输出轴负载	Shaft load, max.	
最大径向负载-距端面5mm	Max. radial load, 5 mm from flange	200N
最大轴向负载	Max. axial load	120N
最大允许安装力	Max. force for press fits	200N
输出轴间隙	Shaft play	
径向间隙-距端面5mm	Radial play, 5 mm from flange	≤0.1 mm
轴向间隙	Axial play	≤0.1 mm
推荐温度范围	Recommended temperature range	-40°C +100 °C

GPA 35 PLANETARY GEARHEAD

GPA35 Ø 35mm, 行星减速器



GPA35 RATIO LIST

级数	Stage	1				
订货号	Order No.	3566001	3566002	3566003	3566004	
减速比	Reduction ratio	3.33	3.95	5.31	6.60	
级数	Stage	2				
订货号	Order No.	3566007	3566008	3566009	3566010	3566011 —— 016
减速比	Reduction ratio	11	13	16	18	21 —— 44
级数	Stage	3				
订货号	Order No.	3566018	3566019	3566020	3566021	3566022 —— 035
减速比	Reduction ratio	44	52	59	62	70 —— 231
级数	Stage	4				
订货号	Order No.	3566039	3566040	3566041	3566042	3566043 —— 070
减速比	Reduction ratio	173	197	205	233	243 —— 1526
级数	Stage	5				
订货号	Order No.	3566074	3566076	3566077	3566078	3566080 —— 125
减速比	Reduction ratio	577	683	776	809	919 —— 8099

减速比详询销售

主要参数 MAJOR PARAMETERS

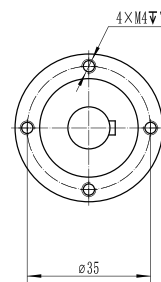
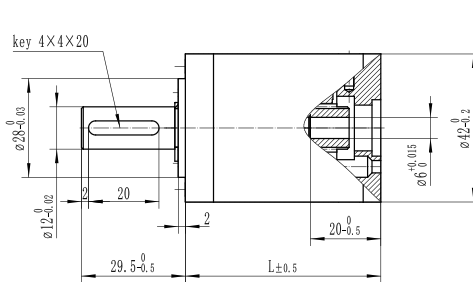
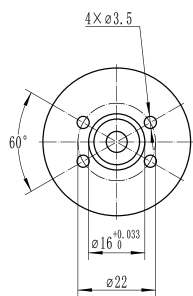
级数 Stages	[可配置]	1	2	3	4	5
连续输出扭矩 Continuous torque	Nm	2.0	5.0	8.0	12	12
瞬时输出扭矩 Intermittent torque	Nm	3.0	7.5	12	16	16
传动效率 Efficiency	%	90	81	72	63	55
平均空载回差 Average backlash no load	°	0.8	1.2	1.5	2.0	2.0
长度 Length	mm	33	46	54	62	70
重量 Weight	g	166	206	252	295	330

减速箱参数

输出轴材料	Output shaft material	钢 Steel
推荐最大输入转速	Recommended max. input speed for:	
最大输入转速	Max. continuous input speed	8000 rpm
输入输出旋转方向	Direction of rotation, drive to output	=
输出端轴承	Bearing at output	滚珠轴承 Ball bearing
输出轴负载	Shaft load, max.	
最大径向负载-距端面5mm	Max. radial load, 5 mm from flange	220N
最大轴向负载	Max. axial load	150N
最大允许安装力	Max. force for press fits	300N
输出轴间隙	Shaft play	
径向间隙-距端面5mm	Radial play, 5 mm from flange	≤0.1 mm
轴向间隙	Axial play	≤0.1 mm
推荐温度范围	Recommended temperature range	-20°C + 100 °C

GPA 42 PLANETARY GEARHEAD

GPA 42 Ø 42mm, 行星减速器



GPA42 RATIO LIST

级数	Stage	1				
订货号	Order No.	4266001	4266002	4266003	4266004	4266005
减速比	Reduction ratio	3.50	4.00	4.33	5.00	6.00
级数	Stage	2				
订货号	Order No.	4266007	4266008	4266009	4266010	4266011 —— 021
减速比	Reduction ratio	12	14	15	16	17 —— 36
级数	Stage	3				
订货号	Order No.	4266022	4266023	4266024	4266025	4266026 —— 056
减速比	Reduction ratio	43	49	53	56	61 —— 216
级数	Stage	4				
订货号	Order No.	4266058	4266059	4266060	4266061	4266062 —— 125
减速比	Reduction ratio	172	186	196	212	214 —— 1080
级数	Stage	5				
订货号	Order No.	4266128	4266129	4266130	4266131	4266132 —— 251
减速比	Reduction ratio	600	650	686	743	750 —— 6480

减速比详询销售

主要参数 MAJOR PARAMETERS

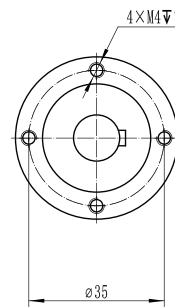
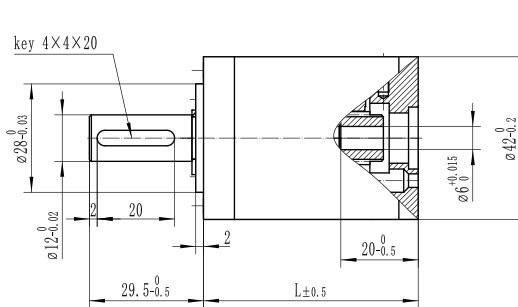
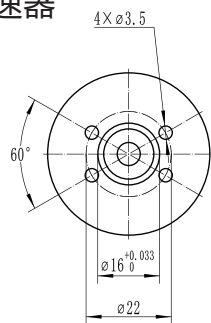
级数 Stages	[可配置]	1	2	3	4	5
连续输出扭矩 Continuous torque	Nm	3	7	12	15	15
瞬时输出扭矩 Intermittent torque	Nm	5	10	20	22.5	22.5
传动效率 Efficiency	%	90	81	72	63	55
平均空载回差 Average backlash no load	°	0.8	1.2	1.5	1.8	1.8
长度 Length	mm	41	55.5	66.6	77.7	87.7
重量 Weight	g	266	365	411	510	609

减速箱参数

输出轴材料	Output shaft material	钢 Steel
推荐最大输入转速	Recommended max. input speed for:	
最大输入转速	Max. continuous input speed	8000 rpm
输入输出旋转方向	Direction of rotation, drive to output	=
输出端轴承	Bearing at output	滚珠轴承 Ball bearing
输出轴负载	Shaft load, max.	
最大径向负载-距端面5mm	Max. radial load, 5 mm from flange	220N
最大轴向负载	Max. axial load	150N
最大允许安装力	Max. force for press fits	300N
输出轴间隙	Shaft play	
径向间隙-距端面5mm	Radial play, 5 mm from flange	≤0.1 mm
轴向间隙	Axial play	≤0.2 mm
推荐温度范围	Recommended temperature range	-40°C +100 °C

GPY 42 PLANETARY GEARHEAD

GPY 42 Ø 42mm, 行星减速器



GPY42 RATIO LIST

级数	Stage	1				
订货号	Order No.	4269001	4269002	4269003	4269004	4269005
减速比	Reduction ratio	3.50	4.00	4.33	5.00	6.00
级数	Stage	2				
订货号	Order No.	4269007	4269008	4269009	4269010	4269011 —— 021
减速比	Reduction ratio	12	14	15	16	17 —— 36
级数	Stage	3				
订货号	Order No.	4269022	4269023	4269024	4269025	4269026 —— 056
减速比	Reduction ratio	43	49	53	56	61 —— 216
级数	Stage	4				
订货号	Order No.	4269058	4269059	4269060	4269061	4269062 —— 125
减速比	Reduction ratio	172	186	196	212	214 —— 1080
级数	Stage	5				
订货号	Order No.	4269128	4269129	4269130	4269131	4269132 —— 251
减速比	Reduction ratio	600	650	686	743	750 —— 6480

减速比详询销售

主要参数 MAJOR PARAMETERS

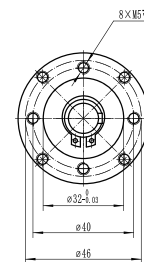
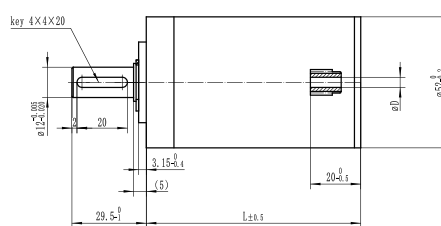
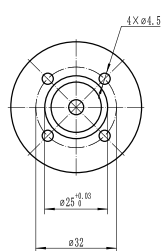
级数 Stages	[可配置]	1	2	3	4	5
连续输出扭矩 Continuous torque	Nm	3	8	15	15	15
瞬时输出扭矩 Intermittent torque	Nm	5	12	22.5	22.5	22.5
传动效率 Efficiency	%	90	81	72	63	55
平均空载回差 Average backlash no load	°	0.25	0.35	0.5	0.7	0.8
长度 Length	mm	41	55.5	66.6	77.7	87.7
重量 Weight	g	266	365	411	510	609

减速箱参数

输出轴材料	Output shaft material	钢 Steel
推荐最大输入转速	Recommended max. input speed for:	
最大输入转速	Max. continuous input speed	8000 rpm
输入输出旋转方向	Direction of rotation, drive to output	=
输出端轴承	Bearing at output	滚珠轴承 Ball bearing
输出轴负载	Shaft load, max.	
最大径向负载-距端面5mm	Max. radial load, 5 mm from flange	240N
最大轴向负载	Max. axial load	200N
最大允许安装力	Max. force for press fits	300N
输出轴间隙	Shaft play	
径向间隙-距端面5mm	Radial play, 5 mm from flange	≤0.1 mm
轴向间隙	Axial play	≤0.1 mm
推荐温度范围	Recommended temperature range	-40°C +100 °C

GPX 52 PLANETARY GEARHEAD

GPX 52 Ø 42mm, 行星减速器



GPX52 RATIO LIST

级数	Stage	1				
订货号	Order No.	5268001	5268002	5268003	5268004	
减速比	Reduction ratio	3.50	4.33	6.00	7.67	
级数	Stage	2				
订货号	Order No.	5268007	5268008	5268009	5268010	5268011 —— 016
减速比	Reduction ratio	12	15	19	21	26 —— 59
级数	Stage	3				
订货号	Order No.	5268017	5268018	5268019	5268020	5268021 —— 032
减速比	Reduction ratio	43	53	66	74	81 —— 216
级数	Stage	4				
订货号	Order No.	5268037	5268038	5268039	5268040	5268041 —— 065
减速比	Reduction ratio	150	186	230	257	285 —— 1528
级数	Stage	5				
订货号	Order No.	3566074	3566076	3566077	3566078	3566080 —— 125
减速比	Reduction ratio	577	683	776	809	919 —— 8099

减速比详询销售

主要参数 MAJOR PARAMETERS

级数 Stages	[可配置]	1	2	3	4	
连续输出扭矩 Continuous torque	Nm	4.0	12	30	30	
瞬时输出扭矩 Intermittent torque	Nm	6.0	18	45	45	
传动效率 Efficiency	%	90	81	72	63	
平均空载回差 Average backlash no load	°	0.8	1.2	1.5	2.0	
长度 Length	mm	45.5	57.7	72.9	85.2	
重量 Weight	g	394	551	720	865	

减速箱参数

输出轴材料	Output shaft material	钢 Steel
推荐最大输入转速	Recommended max. input speed for:	
最大输入转速	Max. continuous input speed	8000 rpm
输入输出旋转方向	Direction of rotation, drive to output	=
输出端轴承	Bearing at output	滚珠轴承 Ball bearing
输出轴负载	Shaft load, max.	
最大径向负载-距端面5mm	Max. radial load, 5 mm from flange	360N
最大轴向负载	Max. axial load	200N
最大允许安装力	Max. force for press fits	500N
输出轴间隙	Shaft play	
径向间隙-距端面5mm	Radial play, 5 mm from flange	≤0.1 mm
轴向间隙	Axial play	≤0.1 mm
推荐温度范围	Recommended temperature range	-40°C +100 °C



北京博阳瑞德科技有限公司

☎ : 010-69836107 13366172548

🌐 : www.byrd-motor.com

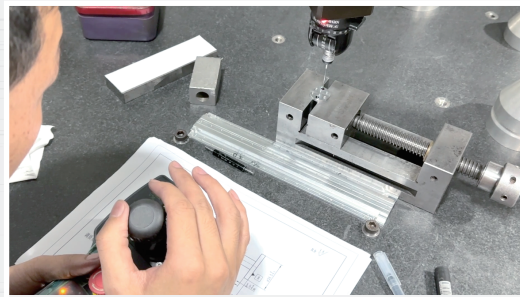
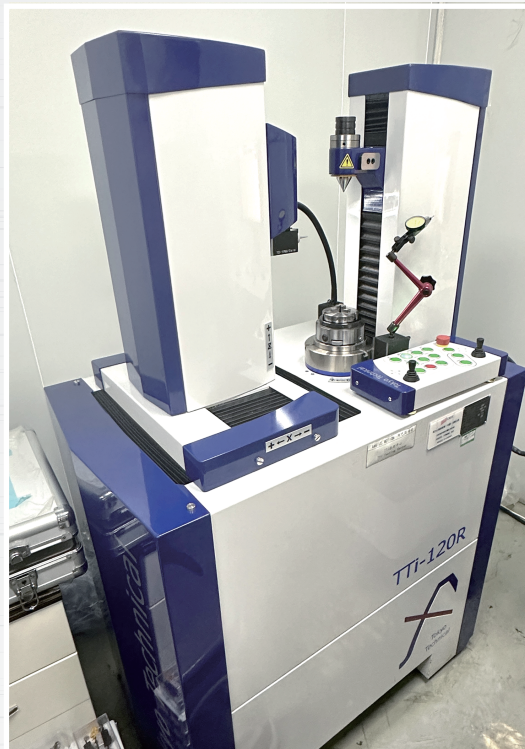
✉ : lrc183@126.com

📍 : 北京市门头沟区西长安壹号28号院1号楼1112室

TEST EQUIPMENT

测试设备

Professional driver solution provider
为您提供专业得驱动解决方案



ASSEMBLE

装配

