

KILOTALK

Weighing System



The KiloTalk Weighing System features a shackle-form load cell with a high safety factor, providing 10x safety protection for dependable performance. It supports a measuring range of 1T to 5T with a 150% F.S. overload capacity. Designed for flexibility, the system allows composite power supply and communication cables, enabling both single-point connections and Daisy chain configurations. With the capability to control up to 100 load cells using a single controller, the system offers a multi-region monitoring interface and diverse monitoring options. Real-time load monitoring and running data recording are seamlessly integrated, along with robust safety protections against underload and overload conditions.

KiloCell Loadcell



Shackle Type Loadcell

- Standard shackle, high space utilization
- High safety, 10:1 and 5:1 products available
- Measuring range 0.5T~5T, the whole system 150%F.S overload capacity
- Adopts the combined power supply and communication cable,
- XLR-5 core connection, support single point and daisy chain connection
- CANOPEN communication mode, users only need to set the address, the network is fast
- 3-key local menu, digital tube display

Wireless Bluetooth Loadcell



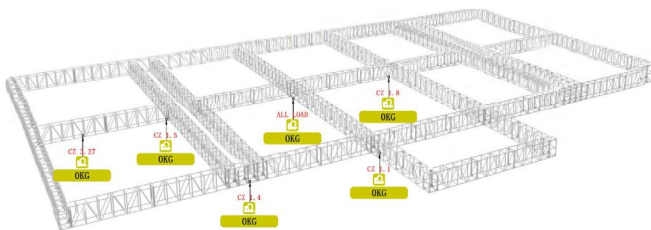
- Uses 3/4 and 7/8 standard shackles, offering high space utilization
- Provides products with safety factors of 6:1, 8:1, and 10:1, with 2x overload capacity
- Available in load capacities from 0.5T to 5T
- Measurement error: up to 1% of the load capacity
- Wireless 2.4G communication, with a maximum communication range of 100 meters
- Powered by an internal battery, with a maximum working time of 180 days
- Charging is done via a standard TYPE-C port
- No additional wiring after installation

KiloHub Controller

- A single master can manage 100 KiloCell scales
- Supports 8 kiloHub cascades to easily build large monitoring systems
- 8-channel CANHUB patented design, flexible and simple
- Each channel supports a maximum of 16 devices, single-cable Daisy chain connection
- Two standard POE ports
- Standard 2U rack with 230VAC power supply
- Local LED status indication
- Provides four DI and two DQ outputs

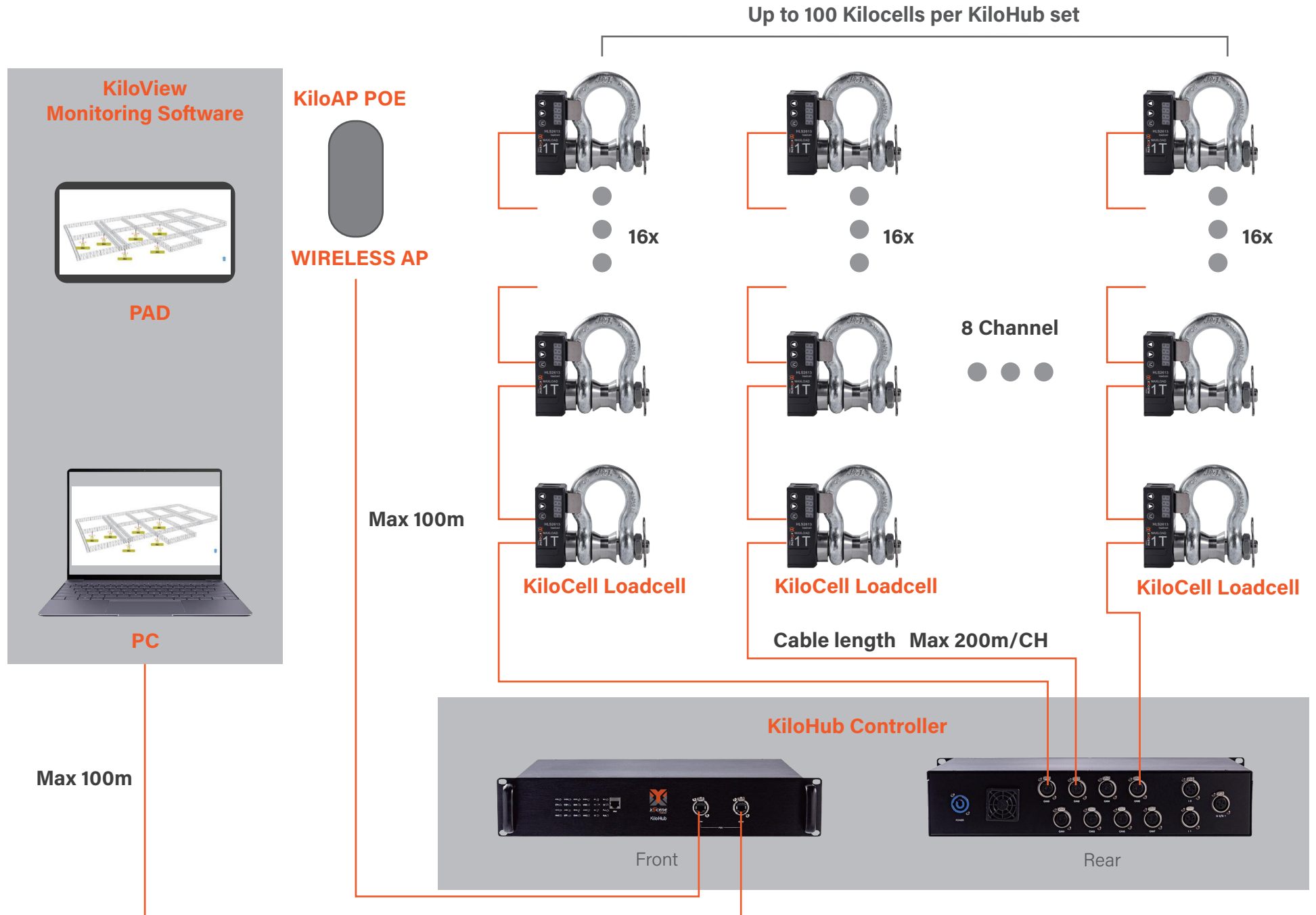


KiloView Monitoring Software

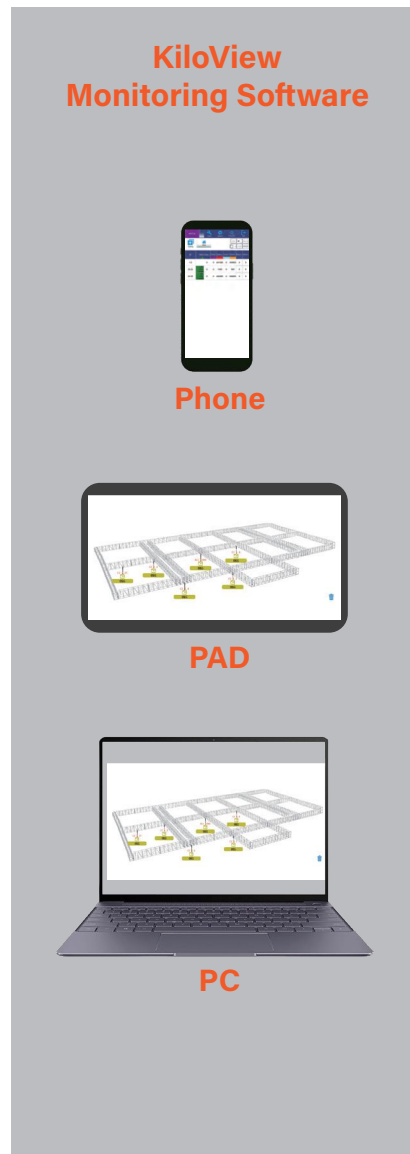


- Project or field scanning equipment can be built in advance
- Multiple monitoring interface: bar chart, table, 2D layout chart
- Real-time data monitoring of node (grouping) load
- Alarm, underload, and overload protection
- Real-time recording of running data
- Object grouping display, top display, etc
- Multi-area monitoring page

KILOTALK WEIGHING SYSTEM



KILOTALK WIRELESS BLUETOOTH LOADCELL SYSTEM



NO RELAY



Max 100m



**Wireless Bluetooth
Loadcell**



**Wireless Bluetooth
Loadcell**



**Wireless Bluetooth
Loadcell**