



以客户为导向，灵活高效

快速专业地满足客户需求

CUSTOMER-ORIENTED, FLEXIBLE AND EFFICIENT ,
QUICKLY AND PROFESSIONALLY MEET CUSTOMER DEMANDS

滚动轴承附件

ROLLING BEARING ACCESSORIES

河南省艾威传动科技有限公司
HENAN PROVINCE IVY POWER TECHNOLOGY CO.,LTD.

Tel: 15036339732/15036790661
Email: ivpower@163.com



产品样册

PRODUCT CATALOG

CONTENTS 目录



- 1、紧定套..... 01
Adapter Sleeve



- 2、退卸套..... 09
Withdrawal Sleeve



- 3、锁紧螺母..... 17
Lock Nut



- 4、锁紧垫圈..... 22
Lock Washer



- 5、锁紧卡..... 25
Locking Card



- 6、液压螺母..... 28
Hydraulic Nut



- 7、精密螺母..... 33
Precision Locknut



- 8、胀紧联接套..... 38
Keyless Locking Devices



简介 / INTRODUCTION

滚动轴承附件是部分轴承安装使用中必不可缺的一个组件，随着技术的进步，安装要求的提高，对于提高滚动轴承的机械效率和可靠性，轴承附件起着至关重要的作用。

艾威（IVY POWER）团队成员像常青藤一样充满朝气具有向上精神，我们以客户为导向，灵活高效，快速专业地满足客户需求，我们的团队一直致力于针对特定需求和客户进行创新性改进，公司工程人员在产品加工和应用方面拥有多项实用型专利，有着多年的技术应用经验。我们的目标是将我们的高精产品贡献于社会，与全世界共享我们的热情和创新精神。

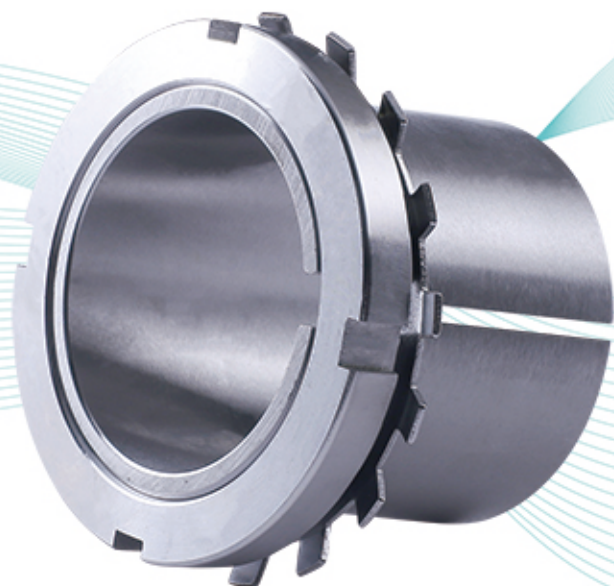
再次感谢用户对IVY POWER的关注！

Rolling bearing accessories are an indispensable component in the installation and use of some bearings. With the advancement of technology and the improvement of technology requirements, bearing accessories play a vital role in improving the mechanical efficiency and reliability of rolling bearings.

IVY POWER team are full of vigor and upward spirit like ivy, and have the courage to meet challenges. The company's engineers have a number of practical patents in product processing and application, and have many years of technical application experience. Sales personnel can operate independently Import and export related matters. Our goal is to contribute our high-precision products to society and share our enthusiasm and innovative spirit with the world.

Thanks for your attention to IVY POWER!

紧定套 Adapter Sleeve



紧定套配合锥形孔轴承可以安装在光轴或阶梯轴上。光轴可以安装在任意需要位置，阶梯轴可以配合L型挡环安装在需要位置。

通常情况下内径 $\leq 200\text{MM}$ 的紧定套使用锁紧垫片止退；内径 $> 200\text{MM}$ 的紧定套使用锁紧卡（英制使用锁紧片）止退。也可以使用自身带有锁紧装置螺母止退。

内径 $> 200\text{MM}$ 外径沿圆周方向分布有油道，带有油道紧定套使用注油方式拆卸或使用液压螺母拆卸更便捷。

Adapter sleeve can be mounted on smooth or stepped shafts. The optical shaft can be installed in any required position, and the stepped shaft can be installed in the required position with the L-shaped retaining ring.

Normally, adapter sleeve with inner diameter $\leq 200\text{mm}$ uses a lockwasher to prevent it from retreating; and inner diameter $> 200\text{mm}$ uses a locking card (the inch system uses a locking piece) to prevent it from retreating. It is also possible to use the nut with its own locking device for backstop.

The inner diameter $> 200\text{mm}$ and the outer diameter are distributed with oil passages along the circumferential direction. It is more convenient to disassemble the adapter sleeve with oil passage by oil injection or by hydraulic nut.

紧定套的组成：The composition of the adapter sleeve

公制紧定套 (Metric)	H***	紧定衬套：A***
英制轴用紧定套 (Inch)	HE***	+ 锁紧螺母：KM；HM；HML；（自带锁紧装置螺母）
	HA***	+ 锁紧垫圈：MB / 锁紧卡：MS/MSL 螺栓

英制常用代号 (Inch)：	SNW***	SNP***
	S：衬套	S：衬套
	N(AN)：锁紧螺母	N(AN)：锁紧螺母
	W(TW)：锁紧垫圈	P(PL)：锁紧片

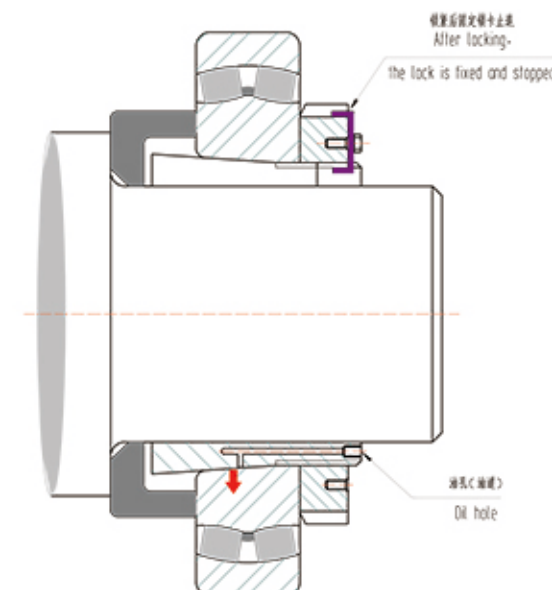
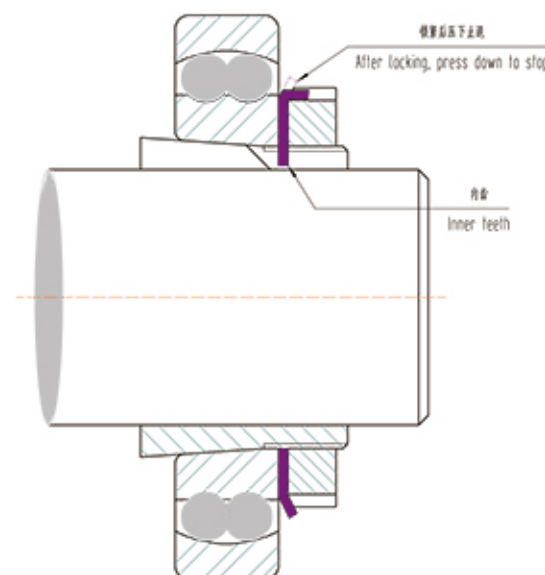
JIS, DIN, 其他厂商标准零件代号与国标有所不同，详情请咨询艾威传动。

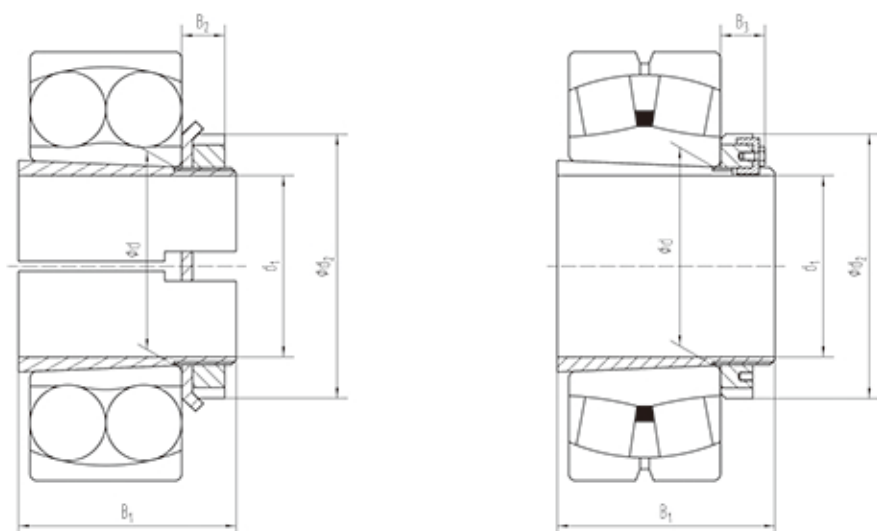
JIS, DIN, the standard part codes of other manufacturers are different from the national standard. Details please consult with IVY POWER.

锥度代号说明 (Taper code description):

H：锥度为1:12的紧定套 例如：H205；H315；H2305

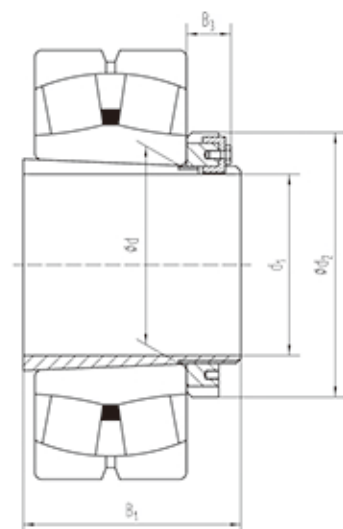
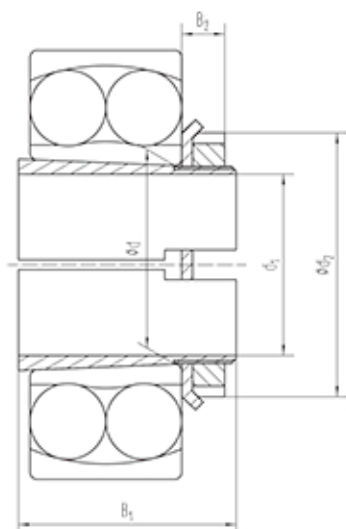
H24：锥度为1:30的紧定套 例如：H24020；H24120





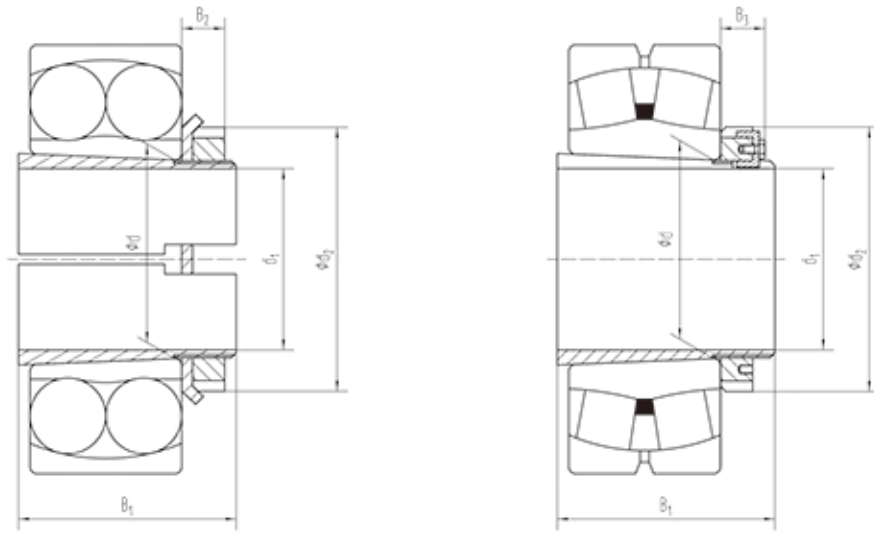
型号 UNIT NO.	主要尺寸Dimensions						适用轴承型号Appropriate bearing(s)				重量 W.t Kg
	d mm	d1 mm	B1 mm	d2 mm	B2 mm	B3 mm	调心球轴承 Self-aligning ball bearing	调心滚子轴承 Spherical roller bearing			
H 205	25	20	26	38	8	—	—	1205K	—	—	0.064
H 206	30	25	27	45	8	—	—	1206K	—	—	0.086
H 207	35	30	29	52	9	—	—	1207K	—	—	0.12
H 208	40	35	31	58	10	—	—	1208K	—	—	0.16
H 209	45	40	33	65	11	—	—	1209K	—	—	0.21
H 210	50	45	35	70	12	—	—	1210K	—	—	0.24
H 211	55	50	37	75	12	—	—	1211K	—	—	0.28
H 212	60	55	38	80	13	—	—	1212K	—	—	0.31
H 213	65	60	40	85	14	—	—	1213K	—	—	0.36
H 214	70	60	41	92	14	—	—	1214K	—	—	0.55
H 215	75	65	43	98	15	—	—	1215K	—	—	0.66
H 216	80	70	46	105	17	—	—	1216K	—	—	0.81
H 217	85	75	50	110	18	—	—	1217K	—	—	0.94
H 218	90	80	52	120	18	—	—	1218K	—	—	1.1
H 219	95	85	55	125	19	—	—	1219K	—	—	1.25
H 220	100	90	58	130	20	—	—	1220K	—	—	1.4
H 221	105	95	60	140	20	—	—	1221K	—	—	1.6
H 222	110	100	63	145	21	—	—	1222K	—	—	1.8
H 3024	120	110	72	145	22	—	—	—	23024K	—	1.8
H 3026	130	115	80	155	23	—	—	—	23026K	—	2.8
H 3028	140	125	82	165	24	—	—	—	23028K	—	3.05
H 3030	150	135	87	180	26	—	—	—	23030K	—	3.75
H 3032	160	140	93	190	28	—	—	—	23032K	—	5.1
H 3034	170	150	101	200	29	—	—	—	23034K	—	5.8
H 3036	180	160	109	210	30	—	—	—	23036K	—	6.7
H 3038	190	170	112	220	31	—	—	—	23038K	—	7.25
H 3040	200	180	120	240	32	—	—	—	23040K	—	8.9
H 3044	220	200	126	260	—	41	—	—	23044K	—	9.9
H 3048	240	220	133	290	—	46	—	—	23048K	—	13.3
H 3052	260	240	145	310	—	46	—	—	23052K	—	15.4
H 3056	280	260	152	330	—	50	—	—	23056K	—	17.7
H 3060	300	280	168	360	—	54	—	—	23060K	—	22.7
H 3064	320	300	171	380	—	55	—	—	23064K	—	24.6
H 3068	340	320	187	400	—	58	—	—	23068K	—	28.9
H 3072	360	340	188	420	—	58	—	—	23072K	—	30.3
H 3076	380	360	193	450	—	62	—	—	23076K	—	35.9
H 3080	400	380	210	470	—	66	—	—	23080K	—	40
H 3084	420	400	212	490	—	66	—	—	23084K	—	47
H 3088	440	410	228	520	—	77	—	—	23088K	—	65
H 3092	460	430	234	540	—	77	—	—	23092K	—	71
H 3096	480	450	237	560	—	77	—	—	23096K	—	75
H 30/500	500	470	247	580	—	85	—	—	230/500K	—	82

型号 UNIT NO.	主要尺寸Dimensions						适用轴承型号Appropriate bearing(s)				重量 W.t Kg
	d mm	d1 mm	B1 mm	d2 mm	B2 mm	B3 mm	调心球轴承 Self-aligning ball bearing	调心滚子轴承 Spherical roller bearing			
H 30/530	530	500	265	630	—	90	—	—	230/530K	—	105
H 30/560	560	530	282	650	—	97	—	—	230/560K	—	112
H 30/600	600	560	289	700	—	97	—	—	230/600K	—	147
H 30/630	630	600	301	730	—	97	—	—	230/630K	—	138
H 30/670	670	630	324	780	—	102	—	—	230/670K	—	190
H 30/710	710	670	342	830	—	112	—	—	230/710K	—	228
H 30/750	750	710	356	870	—	112	—	—	230/750K	—	246
H 30/800	800	750	366	920	—	112	—	—	230/800K	—	302
H 30/850	850	800	380	980	—	115	—	—	230/850K	—	341
H 30/900	900	850	400	1030	—	125	—	—	230/900K	—	387
H 30/950	950	900	420	1080	—	125	—	—	230/950K	—	424
H 30/1000	1000	950	430	1140	—	125	—	—	230/1000K	—	470
H 30/1060	1060	1000	447	1200	—	125	—	—	230/1060K	—	571
H 305	25	20	29	38	8	—	1305K	2205K	21305K	—	0.071
H 306	30	25	31	45	8	—	1306K	2206K	21306K	—	0.095
H 307	35	30	35	52	9	—	1307K	2207K	21307K	—	0.14
H 308	40	35	36	58	10	—	1308K	2208K	21308K	22208K	0.17
H 309	45	40	39	65	11	—	1309K	2209K	21309K	22209K	0.23
H 310	50	45	42	70	12	—	1310K	2210K	21310K	22210K	0.27
H 311	55	50	45	75	12	—	1311K	2211K	21311K	22211K	0.32
H 312	60	55	47	80	13	—	1312K	2212K	21312K	22212K	0.36
H 313	65	60	50	85	14	—	1313K	2213K	21313K	22213K	0.42
H 314	70	60	52	92	14	—	1314K	2214K	21314K	22214K	0.67
H 315	75	65	55	98	15	—	1315K	2215K	21315K	22215K	0.78
H 316	80	70	59	105	17	—	1316K	2216K	21316K	22216K	0.95
H 317	85	75	63	110	18	—	1317K	2217K	21317K	22217K	1.1
H 318	90	80	65	120	18	—	1318K	2218K	21318K	22218K	1.3
H 319	95	85	68	125	19	—	1319K	2219K	21319K	22219K	1.4
H 320	100	90	71	130	20	—	1320K	2220K	21320K	22220K	1.6
H 322	110	100	77	145	21	—	1322K	2222K	21322K	22222K	2.05
H 3120	100	90	76	130	20	—	—	—	23120K	—	1.8
H 3122	110	100	81	145	21	—	—	—	23122K	—	2.1
H 3124	120	110	88	155	22	—	—	—	23124K	22224K	2.5
H 3126	130	115	92	165	23	—	—	—	23126K	22226K	3.45
H 3128	140	125	97	180	24	—	—	—	23128K	22228K	4.1
H 3130	150	135	111	195	26	—	—	—	23130K	22230K	5.5
H 3132	160	140	119	210	28	—	—	—	23132K	22232K	7.25
H 3134	170	150	122	220	29	—	—	—	23134K	22234K	8.1
H 3136	180	160	131	230	30	—	—	—	23136K	22236K	9.15
H 3138	190	170	141	240	31	—	—	—	23138K	22238K	10.5
H 3140	200	180	150	250	32	—	—	—	23140K	22240K	12
H 3144	220	200	161	280	—	35	—	—	23144K	22244K	15
H 3148	240	220	172	300	—	37	—	—	23148K	22248K	16
H 3152	260	240	190	330	—	39	—	—	23152K	22252K	22.4
H 3156	280	260	195	350	—	41	—	—	23156K	22256K	24.5
H 3160	300	280	208	380	—	53	—	—	23160K	22260K	30.1
H 3164	320	300	226	400	—	56	—	—	23164K	22264K	35
H 3168	340	320	254	440	—	72	—	—	23168K	—	50.2
H 3172	360	340	259	460	—	75	—	—	23172K	—	55.4
H 3176	380	360	264	490	—	77	—	—	23176K	—	62.4
H 3180	400	380	272	520	—	82	—	—	23180K	—	73
H 3184	420	400	304	540	—	90	—	—	23184K	—	80
H 3188	440	410	307	560	—	90	—	—	23188K	—	95
H 3192	460	430	326	580	—	95	—	—	23192K	—	119
H 3196	480	450	335	620	—	95	—	—	23196K	—	135
H 31/500	500	470	356	630	—	100	—	—	231/500K	—	145
H 31/530	530	500	364	670	—	105	—	—	231/530K	—	161
H 31/560	560	530	377	710	—	110	—	—	231/560K	—	185
H 31/600	600	560	399	750	—	110	—	—	231/600K	—	234
H 31/630	630	600	424	800	—	120	—	—	231/630K	—	254
H 31/670	670	630	456	850	—	131	—	—	231/670K	—	340



型号 UNIT NO.	主要尺寸Dimensions						适用轴承型号Appropriate bearing(s)				重量 W.t Kg
	d mm	d1 mm	B1 mm	d2 mm	B2 mm	B3 mm	调心球轴承		调心滚子轴承		
							Selg-alignng ball bearing		Spherical roller bearing		
H 31/710	710	5670	467	900	—	135	—	—	231/710K	—	392
H 31/750	750	710	493	950	—	141	—	—	231/750K	—	451
H 31/800	800	750	505	1000	—	141	—	—	231/800K	—	535
H 31/850	850	800	536	1060	—	147	—	—	231/850K	—	616
H 31/900	900	850	557	1120	—	154	—	—	231/900K	—	677
H 31/950	950	900	583	1170	—	154	—	—	231/950K	—	738
H 31/1000	1000	950	609	1240	—	154	—	—	231/1000K	—	842
H 31/1060	1060	1000	622	1300	—	154	—	—	231/1060K	—	984
H 2305	25	20	35	38	8	—	2305K	—	—	—	0.085
H 2306	30	25	38	45	8	—	2306K	—	—	—	0.11
H 2307	35	30	43	52	9	—	2307K	—	—	—	0.16
H 2308	40	35	46	58	10	—	2308K	—	22308K	—	0.22
H 2309	45	40	50	65	11	—	2309K	—	22309K	—	0.27
H 2310	50	45	55	70	12	—	2310K	—	22310K	—	0.34
H 2311	55	50	59	75	12	—	2311K	—	22311K	—	0.39
H 2312	60	55	62	80	13	—	2312K	—	22312K	—	0.45
H 2313	65	60	65	85	14	—	2313K	—	22313K	—	0.52
H 2314	70	60	68	92	14	—	2314K	—	22314K	—	0.88
H 2315	75	65	73	98	15	—	2315K	—	22315K	—	1.1
H 2316	80	70	78	105	17	—	2316K	—	22316K	—	1.2
H 2317	85	75	82	110	18	—	2317K	—	22317K	—	1.35
H 2318	90	80	86	120	18	—	2318K	—	22318K	—	1.6
H 2319	95	85	90	125	19	—	2319K	—	22319K	—	1.8
H 2320	100	90	97	130	20	—	2320K	—	22320K	23220K	2
H 2322	110	100	105	145	21	—	2322K	—	22322K	23222K	2.75
H 2324	120	110	112	155	22	—	—	—	22324K	23224K	3
H 2326	130	115	121	165	23	—	—	—	22326K	23226K	4.45
H 2328	140	125	131	180	24	—	—	—	22328K	23228K	5.4
H 2330	150	135	139	195	26	—	—	—	22330K	23230K	6.4
H 2332	160	140	147	210	28	—	—	—	22332K	23232K	8.8
H 2334	170	150	154	220	29	—	—	—	22334K	23234K	9.9
H 2336	180	160	161	230	30	—	—	—	22336K	23236K	11
H 2338	190	170	169	240	31	—	—	—	22338K	23238K	12
H 2340	200	180	176	250	32	—	—	—	22340K	23240K	13.5
H 2344	220	200	186	280	—	35	—	—	22344K	23244K	17
H 2348	240	220	199	300	—	37	—	—	22348K	23248K	20
H 2352	260	240	211	330	—	39	—	—	22352K	23252K	24.5
H 2356	280	260	224	350	—	41	—	—	22356K	23256K	27.8
H 3260	300	280	240	380	—	53	—	—	—	23260K	34.4
H 3264	320	300	258	400	—	56	—	—	—	23264K	39.7
H 3268	340	320	288	440	—	72	—	—	—	23268K	55.7
H 3272	360	340	299	460	—	75	—	—	—	23272K	60.5

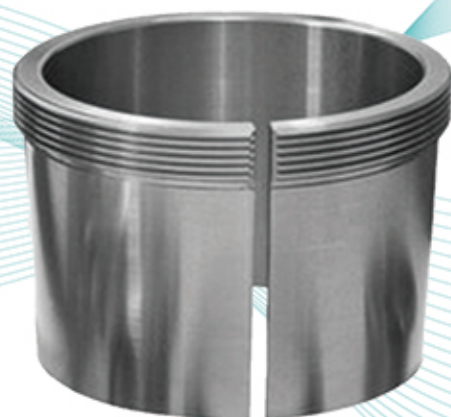
型号 UNIT NO.	主要尺寸Dimensions						适用轴承型号Appropriate bearing(s)				重量 W.t Kg
	d mm	d1 mm	B1 mm	d2 mm	B2 mm	B3 mm	调心球轴承		调心滚子轴承		
							Selg-aligning ball bearing	Spherical roller bearing	Spherical roller bearing	Spherical roller bearing	
H 3276	380	360	310	490	—	77	—	—	—	23276K	392
H 3280	400	380	328	520	—	82	—	—	—	23280K	451
H 3284	420	400	352	540	—	90	—	—	—	23284K	535
H 3288	440	410	361	560	—	90	—	—	—	23288K	616
H 3292	460	430	382	580	—	95	—	—	—	23292K	677
H 3296	480	450	397	620	—	95	—	—	—	23296K	738
H 32/500	500	470	428	630	—	100	—	—	—	232/500K	842
H 32/530	530	500	447	670	—	105	—	—	—	232/530K	984
H 32/560	560	530	462	710	—	110	—	—	—	232/560K	0.085
H 32/600	600	560	487	750	—	110	—	—	—	232/600K	
H 32/630	630	600	521	800	—	120	—	—	—	232/630K	
H 32/670	670	630	558	850	—	131	—	—	—	232/670K	0.16
H 32/710	710	670	572	900	—	135	—	—	—	232/710K	0.22
H 32/750	750	710	603	950	—	141	—	—	—	232/750K	0.27
H 32/800	800	750	618	1000	—	141	—	—	—	232/800K	0.34
H 32/850	850	800	651	1060	—	147	—	—	—	232/850K	0.39
H 32/900	900	850	660	1120	—	154	—	—	—	232/900K	0.45
H 32/950	950	900	675	1170	—	154	—	—	—	232/950K	0.52
H 32/1000	1000	950	707	1240	—	154	—	—	—	232/1000K	952
H 3924	120	110	60	145	22	—	—	—	23924K	—	1.7
H 3926	130	115	65	155	23	—	—	—	23926K	—	2.4
H 3928	140	125	66	165	24	—	—	—	23928K	—	2.7
H 3930	150	135	76	180	26	—	—	—	23930K	—	3.6
H 3932	160	140	78	190	28	—	—	—	23932K	—	4.6
H 3934	170	150	79	200	29	—	—	—	23934K	—	5
H 3936	180	160	87	210	30	—	—	—	23936K	—	5.7
H 3938	190	170	89	220	31	—	—	—	23938K	—	6.2
H 3940	200	180	98	240	32	—	—	—	23940K	—	7.9
H 3944	220	200	96	260	—	41	—	—	23944K	—	7.95
H 3948	240	220	101	290	—	46	—	—	23948K	—	11
H 3952	260	240	116	310	—	46	—	—	23952K	—	11.7
H 3956	280	260	121	330	—	50	—	—	23956K	—	15.3
H 3960	300	280	140	360	—	54	—	—	23960K	—	20
H 3964	320	300	140	380	—	55	—	—	23964K	—	21.5
H 3968	340	320	144	400	—	58	—	—	23968K	—	24.5
H 3972	360	340	144	420	—	58	—	—	23972K	—	25.2
H 3976	380	360	164	450	—	62	—	—	23976K	—	31.5
H 3980	400	380	168	470	—	66	—	—	23980K	—	35
H 3984	420	400	168	490	—	66	—	—	23984K	—	36.9
H 3988	440	410	189	520	—	77	—	—	23988K	—	58
H 3992	460	430	189	540	—	77	—	—	23992K	—	60
H 3996	480	450	200	560	—	77	—	—	23996K	—	66
H 39/500	500	470	208	580	—	85	—	—	239/500K	—	74.3
H 39/530	530	500	216	630	—	90	—	—	239/530K	—	87.9
H 39/560	560	530	227	650	—	97	—	—	239/560K	—	95
H 39/600	600	560	239	700	—	97	—	—	239/600K	—	127
H 39/630	630	600	254	730	—	97	—	—	239/630K	—	124
H 39/670	670	630	264	780	—	102	—	—	239/670K	—	162
H 39/710	710	670	286	830	—	112	—	—	239/710K	—	183
H 39/750	750	710	291	870	—	112	—	—	239/750K	—	211
H 39/800	800	750	303	920	—	112	—	—	239/800K	—	259
H 39/850	850	800	308	980	—	115	—	—	239/850K	—	288
H 39/900	900	850	326	1030	—	125	—	—	239/900K	—	330
H 39/950	950	900	344	1080	—	125	—	—	239/950K	—	362
H 39/1000	1000	950	358	1140	—	125	—	—	239/1000K	—	407
H 39/1060	1060	1000	372	1200	—	125	—	—	239/1060K	—	490
H 24020	100	90	80	130	20	—	—	—	24020K30	—	1.77
H 24022	110	100	90	145	21	—	—	—	24022K30	—	2.3
H 24024	120	110	91	145	22	—	—	—	24024K30	—	2.24
H 24026	130	115	102	155	23	—	—	—	24026K30	—	3.4
H 24028	140	125	103	165	24	—	—	—	24028K30	—	3.75



型号 UNIT NO.	主要尺寸Dimensions						适用轴承型号Appropriate bearing(s)		重量 W.t Kg
	d mm	d1 mm	B1 mm	d2 mm	B2 mm	B3 mm	调心球轴承 Self-aligning ball bearing	调心滚子轴承 Spherical roller bearing	
H 24030	150	135	112	180	26	—	—	24030K30	4.61
H 24032	160	140	118	190	28	—	—	24032K30	6.27
H 24034	170	150	130	200	29	—	—	24034K30	7.28
H 24036	180	160	140	210	30	—	—	24036K30	8.33
H 24038	190	170	143	220	31	—	—	24038K30	9
H 24040	200	180	153	240	32	—	—	24040K30	10.9
H 24044	220	200	162	260	—	41	—	24044K30	12.1
H 24048	240	220	167	290	—	46	—	24048K30	15.3
H 24052	260	240	190	310	—	46	—	24052K30	18.4
H 24056	280	260	195	330	—	50	—	24056K30	20.9
H 24060	300	280	220	360	—	54	—	24060K30	26.9
H 24064	320	300	220	380	—	55	—	24064K30	28.4
H 24068	340	320	244	400	—	58	—	24068K30	33.8
H 24072	360	340	244	420	—	58	—	24072K30	35.6
H 24076	380	360	248	450	—	62	—	24076K30	40.1
H 24080	400	380	272	470	—	66	—	24080K30	46.4
H 24084	420	400	274	490	—	66	—	24084K30	48.6
H 24088	440	410	294	520	—	77	—	24088K30	76.4
H 24092	460	430	300	540	—	77	—	24092K30	80.8
H 24096	480	450	301	560	—	77	—	24096K30	85.6
H 240/500	500	470	309	580	—	85	—	240/500K30	93.8
H 240/530	530	500	343	630	—	90	—	240/530K30	115
H 240/560	560	530	358	650	—	97	—	240/560K30	124
H 240/600	600	560	377	700	—	97	—	240/600K30	171
H 240/630	630	600	395	730	—	97	—	240/630K30	158
H 240/670	670	630	418	780	—	102	—	240/670K30	222.6
H 240/710	710	670	438	830	—	112	—	240/710K30	254.14
H 240/750	750	710	460	870	—	112	—	240/750K30	278
H 240/800	800	750	475	920	—	112	—	240/800K30	355.8
H 240/850	850	800	495	980	—	115	—	240/850K30	393
H 240/900	900	850	520	1030	—	125	—	240/900K30	430
H 240/950	950	900	557	1080	—	125	—	240/950K30	509.3
H 240/1000	1000	950	562	1140	—	125	—	240/1000K30	538.95
H 240/1060	1060	1000	588	1200	—	125	—	240/1060K30	665
H 24120	100	90	94	130	20	—	—	24120K30	1.97
H 24122	110	100	99	145	21	—	—	24122K30	2.45
H 24124	120	110	111	155	22	—	—	24124K30	2.92
H 24126	130	115	113	165	23	—	—	24126K30	4.08
H 24128	140	125	119	180	24	—	—	24128K30	4.81
H 24130	150	135	137	195	26	—	—	24130K30	6.1
H 24132	160	140	148	210	28	—	—	24132K30	8.66
H 24134	170	150	149	220	29	—	—	24134K30	9.32

型号 UNIT NO.	主要尺寸Dimensions						适用轴承型号Appropriate bearing(s)		重量 W.t Kg
	d mm	d1 mm	B1 mm	d2 mm	B2 mm	B3 mm	调心球轴承 Self-aligning ball bearing	调心滚子轴承 Spherical roller bearing	
H 24136	180	160	159	230	30	—	—	24136K30	10.5
H 24138	190	170	172	240	31	—	—	24138K30	11.9
H 24140	200	180	185	250	32	—	—	24140K30	13.4
H 24144	220	200	199	280	—	44	—	24144K30	17.1
H 24148	240	220	212	300	—	46	—	24148K30	19.9
H 24152	260	240	235	330	—	49	—	24152K30	25.2
H 24156	280	260	238	350	—	51	—	24156K30	28
H 24160	300	280	258	380	—	53	—	24160K30	32.7
H 24164	320	300	278	400	—	56	—	24164K30	37.4
H 24168	340	320	317	440	—	72	—	24168K30	54.8
H 24172	360	340	321	460	—	75	—	24172K30	59.9
H 24176	380	360	323	490	—	77	—	24176K30	64.9
H 24180	400	380	332	520	—	82	—	24180K30	73.8
H 24184	420	400	372	540	—	90	—	24184K30	87.82
H 24188	440	410	372	560	—	90	—	24188K30	111
H 24192	460	430	398	580	—	95	—	24192K30	126.26
H 24196	480	450	408	620	—	95	—	24196K30	141.61
H 241/500	500	470	430	630	—	100	—	241/500K30	155.8
H 241/530	530	500	440	670	—	105	—	241/530K30	173
H 241/560	560	530	468	710	—	110	—	241/560K30	202.1
H 241/600	600	560	490	750	—	110	—	241/600K30	256.7
H 241/630	630	600	525	800	—	120	—	241/630K30	273.1
H 241/670	670	630	548	850	—	131	—	241/670K30	366.5
H 241/710	710	670	577	900	—	135	—	241/710K30	412.1
H 241/750	750	710	622	950	—	141	—	241/750K30	472
H 241/800	800	750	627	1000	—	141	—	241/800K30	570.7
H 241/850	850	800	658	1060	—	147	—	241/850K30	650.2
H 241/900	900	850	685	1120	—	154	—	241/900K30	712
H 241/950	950	900	715	1170	—	154	—	241/950K30	776.49
H 241/1000	1000	950	755	1240	—	154	—	241/1000K30	890
H 241/1060	1060	1000	775	1300	—	154	—	241/1060K30	1060

退卸套 Withdrawal Sleeve



退卸套配合锥形孔轴承可以安装在阶梯轴上。退卸套可以通过轴肩的轴盖或螺母径向挤压进轴承内圈和轴之间，达到紧定目的。拆卸时可以配合退卸套上的螺母进行拆卸。

内孔 > 200MM 退卸套在内径和外径沿圆周方向分布有油道，带有油道的退卸套使用注油方式拆卸或使用液压螺母拆卸更便捷。

Withdrawal sleeve can be mounted on stepped shafts. Withdrawal sleeve can be radially squeezed between the inner ring of the bearing and the shaft through the shaft cover or nut of the shaft shoulder to achieve the purpose of tightening. When disassembling, it can be disassembled with the nut on the withdrawal sleeve.

The inner diameter > 200mm and the outer diameter are distributed with oil passages along the circumferential direction. It is more convenient to disassemble the withdrawal sleeve with oil passage by oil injection or by hydraulic nut.

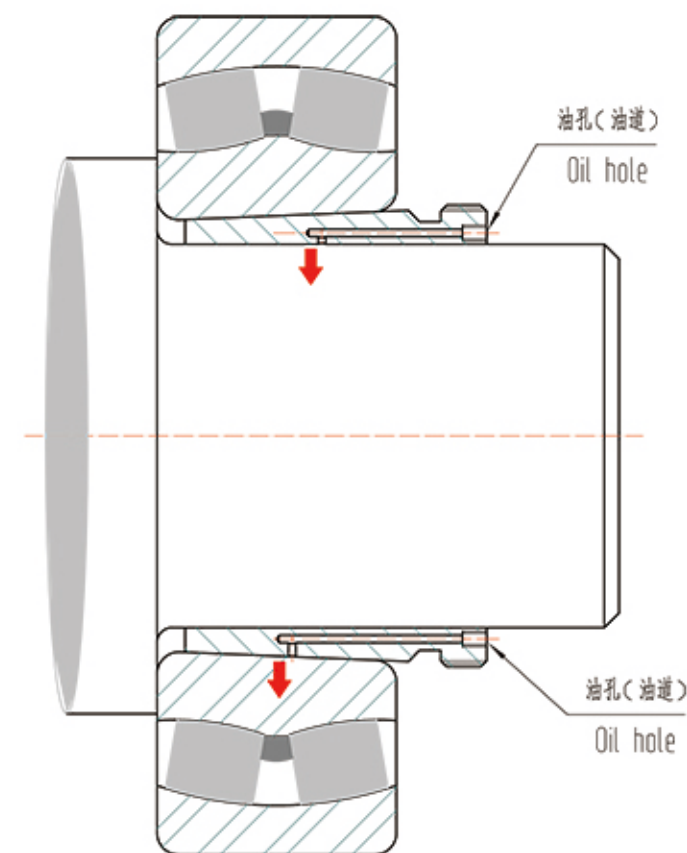
公制代号 (Metric) : AH***
GB 公制代号不等同 DIN, 详情请咨询艾威传动。
GB different from DIN, details please consult with IVY POWER.

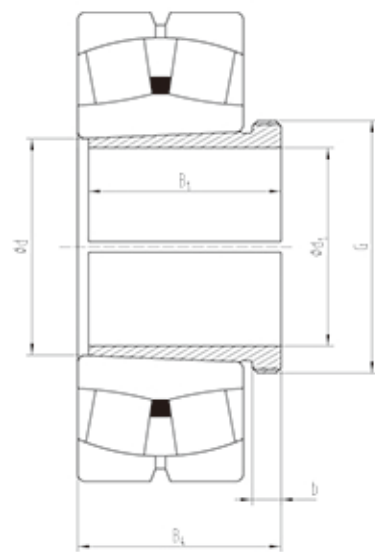
英制常用代号 (Inch) : SK*** ; ASK*** ; SKX***

锥度代号说明 (Taper code description):

AH : 锥度为 1:12 的退卸套 例如: AH205 ; AH315 ; AH2305

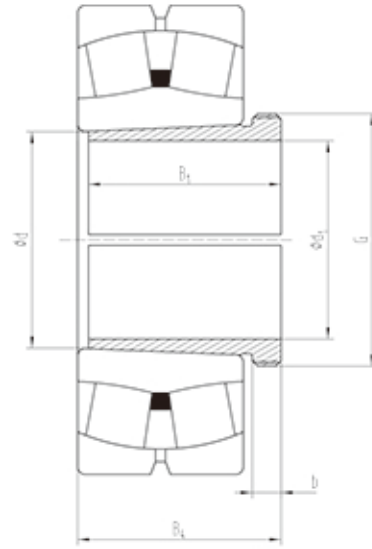
AH24 : 锥度为 1:30 的退卸套 例如: AH24020 ; AH24120





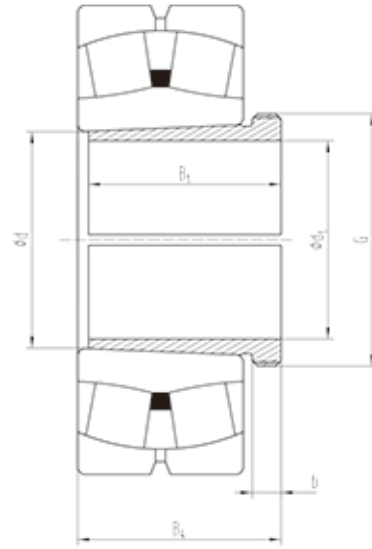
型号 UNIT NO.	螺纹 G mm	主要尺寸Dimensions					适用轴承型号Appropriate bearing(s)				重量 W.t Kg
		d mm	d1 mm	B1 mm	B4 mm	拆卸螺母 mm	调心球轴承 Selg-aligning ball bearing	调心滚子轴承 Spherical roller bearing			
AH 208	M45×1.5	40	35	25	27	KM09	1208K	—	—	—	0.094
AH 209	M50×1.5	45	40	26	29	KM10	1209K	—	—	—	0.104
AH 210	M55×2	50	45	28	31	KM11	1210K	—	—	—	0.130
AH 211	M60×2	55	50	29	32	KM12	1211K	—	—	—	0.167
AH 212	M65×2	60	55	32	35	KM13	1212K	—	—	—	0.175
AHX 213	M70×2	65	60	32.5	36	KM14	1213K	—	—	—	0.242
AHX 214	M75×2	70	65	33.5	37	KM15	1214K	—	—	—	0.255
AHX 215	M80×2	75	70	34.5	38	KM16	1215K	—	—	—	0.280
AH 216	M90×2	80	75	35.5	39	KM18	1216K	—	—	—	0.306
AH 217	M95×2	85	80	38.5	42	KM19	1217K	—	—	—	0.353
AH 218	M100×2	90	85	40	44	KM20	1218K	—	—	—	0.427
AH 219	M105×2	95	90	43	47	KM21	1219K	—	—	—	0.486
AH 220	M110×2	100	95	45	49	KM22	1220K	—	—	—	0.525
AH 222	M120×2	110	105	50	54	KM24	1222K	—	—	—	0.647
AH 224	M130×2	120	115	53	57	KM26	—	—	—	—	0.755
AH 226	M140×2	130	125	53	57	KM28	—	—	—	—	0.815
AH 228	M150×2	140	135	56	61	KM30	—	—	—	—	1.000
AH 230	M160×3	150	145	60	65	KM32	—	—	—	—	1.160
AH 232	M170×3	160	150	64	69	KM34	—	—	—	—	1.910
AH 234	M180×3	170	160	69	74	KM36	—	—	—	—	2.210
AH 236	M190×3	180	170	69	74	KM38	—	—	—	—	2.340
AHX 238	M200×3	190	180	73	78	KM40	—	—	—	—	2.940
AHX 240	Tr210×4	200	190	77	82	KM42	—	—	—	—	3.120
AHX 244	Tr230×4	220	200	85	91	KM46	—	—	—	—	6.100
AHX 248	Tr260×4	240	220	96	102	KM52	—	—	—	—	8.160
AHX 252	Tr280×4	260	240	105	111	KM56	—	—	—	—	9.890
AHX 256	Tr300×4	280	260	105	113	HM60	—	—	—	—	10.400
AH 3024	M130×2	120	115	60	64	KML26	—	—	23024K	—	0.730
AH 3026	M140×2	130	125	67	71	KML28	—	—	23026K	—	0.910
AH 3028	M150×2	140	135	68	73	KML30	—	—	23028K	—	1.000
AH 3030	M160×3	150	145	72	77	KML32	—	—	23030K	—	1.150
AH 3032	M170×3	160	150	77	82	KML34	—	—	23032K	—	2.050
AH 3034	M180×3	170	160	85	90	KML36	—	—	23034K	—	2.450
AH 3036	M190×3	180	170	92	98	KML38	—	—	23036K	—	2.800
AHX 3038	M200×3	190	180	96	102	KML40	—	—	23038K	—	3.300
AHX 3040	Tr210×4	200	190	102	108	KM42	—	—	23040K	—	3.700
AHX 3044	Tr230×4	220	200	111	117	KM46	—	—	23044K	—	7.300
AH 3048	Tr260×4	240	220	116	123	HML52	—	—	23048K	—	7.950
AH 3052	Tr280×4	260	240	128	135	HML56	—	—	23052K	—	10.600
AH 3056	Tr300×4	280	260	131	139	HML60	—	—	23056K	—	12.000
AH 3060	Tr320×5	300	280	145	153	HML64	—	—	23060K	—	14.200
AHX 3064	Tr340×5	320	300	149	157	HML68	—	—	23064K	—	16.500

型号 UNIT NO.	螺纹 G mm	主要尺寸Dimensions					适用轴承型号Appropriate bearing(s)				重量 W.t Kg
		d mm	d1 mm	B1 mm	B4 mm	拆卸螺母 mm	调心球轴承 Selg-aligning ball bearing	调心滚子轴承 Spherical roller bearing			
AHX 3068	Tr360×5	340	320	162	171	HML72	—	—	23068K	—	18.600
AHX 3072	Tr380×5	360	340	167	176	HML76	—	—	23072K	—	20.400
AHX 3076	Tr400×5	380	360	170	180	HML80	—	—	23076K	—	22.000
AHX 3080	Tr420×5	400	380	183	193	HML84	—	—	23080K	—	26.000
AHX 3084	Tr440×5	420	400	186	196	HML88	—	—	23084K	—	27.300
AHX 3088	Tr460×5	440	420	194	205	HML92	—	—	23088K	—	30.800
AHX 3092	Tr480×5	460	440	202	213	HML96	—	—	23092K	—	33.800
AHX 3096	Tr500×5	480	460	205	217	HML/500	—	—	23096K	—	36.000
AHX 30/500	Tr530×6	500	480	209	221	HML/530	—	—	230/500K	—	41.000
AH 30/530	Tr560×6	530	500	230	242	HML/560	—	—	230/530K	—	63.500
AH 30/560	Tr600×6	560	530	240	252	HML/600	—	—	230/560K	—	73.500
AH 30/600	Tr630×6	600	570	245	259	HML/630	—	—	230/600K	—	77.000
AH 30/630	Tr670×6	630	600	258	272	HML/670	—	—	230/630K	—	89.500
AH 30/670	Tr710×7	670	630	280	294	HML/710	—	—	230/670K	—	127.000
AH 30/710	Tr750×7	710	670	286	302	HML/750	—	—	230/710K	—	138.000
AH 30/750	Tr800×7	750	710	300	316	HML/800	—	—	230/750K	—	159.000
AH 30/800	Tr850×7	800	750	308	326	HML/850	—	—	230/800K	—	204.000
AH 30/850	Tr900×7	850	800	325	343	HML/900	—	—	230/850K	—	230.000
AH 30/900	Tr950×8	900	850	335	355	HML/950	—	—	230/900K	—	253.000
AH 30/950	Tr1000×8	950	900	355	375	HML/1000	—	—	230/950K	—	285.000
AH 30/1000	Tr1060×8	1000	950	365	387	HML/1060	—	—	230/1000K	—	318.000
AH 30/1060	Tr1120×8	1060	1000	385	407	HML/1120	—	—	230/1060K	—	406.000
AH 308	M45×1.5	40	35	29	32	KM09	1308K	2208K	21308K	22208K	0.090
AH 309	M50×1.5	45	40	31	34	KM10	1309K	2209K	21309K	22209K	0.120
AH 310	M55×2	50	45	35	38	KM11	1310K	2210K	21310K	22210K	0.130
AH 311	M60×2	55	50	37	40	KM12	1311K	2211K	21311K	22211K	0.160
AH 312	M65×2	60	55	40	43	KM13	1312K	2212K	21312K	22212K	0.190
AHX 313	M70×2	65	60	42	45	KM14	1313K	2213K	21313K	22213K	0.230
AHX 314	M75×2	70	65	43	47	KM15	1314K	2214K	21314K	22214K	0.250
AHX 315	M80×2	75	70	45	49	KM16	1315K	2215K	21315K	22215K	0.300
AH 316	M90×2	80	75	48	52	KM18	1316K	2216K	21316K	22216K	0.370
AH 317	M95×2	85	80	52	56	KM19	1317K	2217K	21317K	22217K	0.430
AH 318	M100×2	90	85	53	57	KM20	1318K	2218K	21318K	22218K	0.460
AH 319	M105×2	95	90	57	61	KM21	1319K	2219K	21319K	22219K	0.540
AH 320	M110×2	100	95	59	63	KM22	1320K	2220K	21320K	22220K	0.580
AH 322	M120×2	110	105	63	67	KM24	1322K	2222K	21322K	—	0.770
AH 324	M130×2	120	115	69	73	KM26	—	—	—	—	0.875
AH 326	M140×2	130	125	74	78	KM28	—	—	—	—	1.030
AH 328	M150×2	140	135	77	82	KM30	—	—	—	—	1.150
AHX 330	M160×3	150	145	83	88	KM32	—	—	—	—	1.550
AHX 332	M170×3	160	150	88	93	KM34	—	—	—	—	2.730
AHX 334	M180×3	170	160	93	98	KM36	—	—	—	—	3.190
AH 3120	M110×2	100	95	64	68	KM22	—	—	23120K	—	0.660
AH 3122	M120×2	110	105	68	72	KM24	—	—	23122K	22222K	0.760
AH 3124	M130×2	120	115	75	79	KM26	—	—	23124K	22224K	0.940
AH 3126	M140×2	130	125	78	82	KM28	—	—	23126K	22226K	1.100
AH 3128	M150×2	140	135	83	88	KM30	—	—	23128K	22228K	1.300
AHX 3130	M160×3	150	145	96	101	KM32	—	—	23130K	22230K	1.700
AHX 3132	M170×3	160	150	103	108	KM34	—	—	23132K	22232K	3.000
AHX 3134	M180×3	170	160	104	109	KM36	—	—	23134K	22234K	3.200
AHX 3136	M190×3	180	170	116	122	KM38	—	—	23136K	—	3.900
AHX 3138	M200×3	190	180	125	131	KM40	—	—	23138K	—	4.500
AH 3140	Tr220×4	200	190	134	140	KM44	—	—	23140K	—	5.650
AH 3144	Tr240×4	220	200	145	151	KM48	—	—	23144K	—	9.300
AH 3148	Tr260×4	240	220	154	161	KM52	—	—	23148K	—	12.000
AHX 3152	Tr280×4	260	240	172	179	KM56	—	—	23152K	—	15.000
AHX 3156	Tr300×4	280	260	175	183	HM60	—	—	23156K	—	16.700
AHX 3160	Tr320×5	300	280	192	200	HM64	—	—	23160K	—	19.800
AHX 3164	Tr340×5	320	300	209	217	HM68	—	—	23164K	—	23.300
AHX 3168	Tr360×5	340	320	225	234	HM72	—	—	23168K	—	27.600
AHX 3172	Tr380×5	360	340	229	238	HM76	—	—	23172K	—	29.800



型号 UNIT NO.	螺纹	主要尺寸Dimensions					适用轴承型号Appropriate bearing(s)				重量
	G mm	d mm	d1 mm	B1 mm	B4 mm	拆卸螺母 mm	调心球轴承 Self-aligning ball bearing		调心滚子轴承 Spherical roller bearing		W.t Kg
AHX 3176	Tr400×5	380	360	232	242	HM80	—	—	23176K	—	32.000
AHX 3180	Tr420×5	400	380	240	250	HM84	—	—	23180K	—	36.000
AHX 3184	Tr440×5	420	400	266	276	HM88	—	—	23184K	—	43.000
AHX 3188	Tr460×5	440	420	270	281	HM92	—	—	23188K	—	46.000
AHX 3192	Tr480×5	460	440	285	296	HM96	—	—	23192K	—	51.500
AHX 3196	Tr500×5	480	460	295	307	HM/500	—	—	23196K	—	56.000
AH 31/500	Tr530×6	500	480	313	325	HM/530	—	—	231/500K	—	66.500
AH 31/530	Tr560×6	530	500	325	337	HM/560	—	—	231/530K	—	94.500
AH 31/560	Tr600×6	560	530	335	347	HM/600	—	—	231/560K	—	108.000
AH 31/600	Tr630×6	600	570	355	369	HM/630	—	—	231/600K	—	120.000
AH 31/630	Tr670×6	630	600	375	389	HM/670	—	—	231/630K	—	140.000
AH 31/670	Tr710×7	670	630	395	409	HM/710	—	—	231/670K	—	189.000
AH 31/710	Tr750×7	710	670	405	421	HM/750	—	—	231/710K	—	207.000
AH 31/750	Tr800×7	750	710	425	441	HM/800	—	—	231/750K	—	238.000
AH 31/800	Tr850×7	800	750	438	456	HM/850	—	—	231/800K	—	305.000
AH 31/850	Tr900×7	850	800	462	480	HM/900	—	—	231/850K	—	345.000
AH 31/900	Tr950×8	900	850	475	495	HM/950	—	—	231/900K	—	379.000
AH 31/950	Tr1000×8	950	900	500	520	HM/1000	—	—	231/950K	—	426.000
AH 31/1000	Tr1060×8	1000	950	525	547	HM/1060	—	—	231/1000K	—	485.000
AH 31/1060	Tr1120×8	1060	1000	540	562	HM/1120	—	—	231/1060K	—	599.000
AHX 2236	M190×3	180	170	105	110	KM38	—	—	—	22236K	3.400
AHX 2238	M200×3	190	180	112	117	KM40	—	—	—	22238K	3.900
AH 2240	Tr220×4	200	190	118	123	KM44	—	—	—	22240K	4.700
AH 2244	Tr240×4	220	200	130	136	KM48	—	—	—	22244K	9.400
AH 2248	Tr260×4	240	220	144	150	KM52	—	—	—	22248K	11.500
AHX 2252	Tr280×4	260	240	155	161	KM56	—	—	—	22252K	13.500
AHX 2256	Tr300×4	280	260	155	163	HM60	—	—	—	22256K	14.500
AHX 2260	Tr320×5	300	280	170	178	HM64	—	—	—	22260K	17.500
AHX 2264	Tr340×5	320	300	180	190	HM68	—	—	—	22264K	20.000
AH 2308	M45×1.5	40	35	40	43	KM09	2308K	—	22308K	—	0.130
AH 2309	M50×1.5	45	40	44	47	KM10	2309K	—	22309K	—	0.160
AH 2310	M55×2	50	45	50	53	KM11	2310K	—	22310K	—	0.190
AH 2311	M60×2	55	50	54	57	KM12	2311K	—	22311K	—	0.260
AH 2312	M65×2	60	55	58	61	KM13	2312K	—	22312K	—	0.300
AHX 2313	M70×2	65	60	61	64	KM14	2313K	—	22313K	—	0.360
AHX 2314	M75×2	70	65	64	68	KM15	2314K	—	22314K	—	0.420
AHX 2315	M80×2	75	70	68	72	KM16	2315K	—	22315K	—	0.480
AH 2316	M90×2	80	75	71	75	KM18	2316K	—	22316K	—	0.570
AH 2317	M95×2	85	80	74	78	KM19	2317K	—	22317K	—	0.650
AH 2318	M100×2	90	85	79	83	KM20	2318K	—	22318K	—	0.760
AH 2319	M105×2	95	90	85	89	KM21	2319K	—	22319K	—	0.900

型号 UNIT NO.	螺纹 G mm	主要尺寸Dimensions					适用轴承型号Appropriate bearing(s)				重量 W.t Kg
		d mm	d1 mm	B1 mm	B4 mm	拆卸螺母 mm	调心球轴承		调心滚子轴承		
							Self-aligning ball bearing	Spherical roller bearing			
AH 2320	M110×2	100	95	90	94	KM22	2320K	—	22320K	—	1.000
AHX 2322	M120×2	110	105	98	102	KM24	2322K	—	22322K	—	1.280
AHX 2324	M130×2	120	115	105	109	KM26	—	—	22324K	—	1.530
AHX 2326	M140×2	130	125	115	119	KM28	—	—	22326K	—	1.900
AHX 2328	M150×2	140	135	125	130	KM30	—	—	22328K	—	2.250
AHX 2330	M160×3	150	145	135	140	KM32	—	—	22330K	—	3.700
AHX 2332	M170×3	160	150	140	146	KM34	—	—	22332K	—	4.300
AHX 2334	M180×3	170	160	146	152	KM36	—	—	22334K	—	4.850
AHX 2336	M190×3	180	170	154	160	KM38	—	—	22336K	—	5.500
AHX 2338	M200×3	190	180	160	167	KM40	—	—	22338K	—	6.100
AH 2340	Tr220×4	200	190	170	177	KM44	—	—	22340K	—	7.600
AH 2344	Tr240×4	220	200	181	189	KM48	—	—	22344K	23244K	13.500
AH 2348	Tr260×4	240	220	189	197	KM52	—	—	22348K	23248K	15.600
AHX 2352	Tr280×4	260	240	205	213	KM56	—	—	22352K	23252K	18.400
AHX 2356	Tr300×4	280	260	212	220	HM60	—	—	22356K	23256K	20.800
AH 3218	M100×2	90	85	63	67	KM20	—	—	23218K	—	0.576
AH 3219	M105×2	95	90	67	71	KM21	—	—	23219K	—	0.680
AH 3220	M110×2	100	95	73	77	KM22	—	—	23220K	—	0.760
AHX 3222	M120×2	110	105	82	86	KM24	—	—	23222K	—	1.000
AHX 3224	M130×2	120	115	90	94	KM26	—	—	23224K	—	1.200
AHX 3226	M140×2	130	125	98	102	KM28	—	—	23226K	—	1.500
AHX 3228	M150×2	140	135	104	109	KM30	—	—	23228K	—	1.800
AHX 3230	M160×3	150	145	114	119	KM32	—	—	23230K	—	2.100
AHX 3232	M170×3	160	150	124	130	KM34	—	—	23232K	—	3.700
AHX 3234	M180×3	170	160	134	140	KM36	—	—	23234K	—	4.350
AHX 3236	M190×3	180	170	140	146	KM38	—	—	23236K	—	4.850
AHX 3238	M200×3	190	180	145	152	KM40	—	—	23238K	—	5.400
AH 3240	Tr220×4	200	190	153	160	KM44	—	—	23240K	—	6.600
AHX 3260	Tr320×5	300	280	228	236	HM64	—	—	23260K	—	24.500
AHX 3264	Tr340×5	320	300	246	254	HM68	—	—	23264K	—	28.500
AHX 3268	Tr360×5	340	320	264	273	HM72	—	—	23268K	—	33.300
AHX 3272	Tr380×5	360	340	274	283	HM76	—	—	23272K	—	35.500
AHX 3276	Tr400×5	380	360	284	294	HM80	—	—	23276K	—	41.100
AHX 3280	Tr420×5	400	380	302	312	HM84	—	—	23280K	—	48.000
AHX 3284	Tr440×5	420	400	321	331	HM88	—	—	23284K	—	54.500
AHX 3288	Tr460×5	440	420	330	341	HM92	—	—	23288K	—	59.000
AHX 3292	Tr480×5	460	440	349	360	HM96	—	—	23292K	—	66.500
AHX 3296	Tr500×5	480	460	364	376	HM/500	—	—	23296K	—	73.500
AHX 32/500	Tr530×6	500	480	393	405	HM/530	—	—	232/500K	—	89.500
AH 32/530	Tr560×6	530	500	412	424	HM/560	—	—	232/530K	—	127.000
AH 32/560	Tr600×6	560	530	422	434	HM/600	—	—	232/560K	—	143.000
AH 32/600	Tr630×6	600	570	445	459	HM/630	—	—	232/600K	—	159.000
AH 32/630	Tr670×6	630	600	475	489	HM/670	—	—	232/630K	—	188.000
AH 32/670	Tr710×7	670	630	500	514	HM/710	—	—	232/670K	—	252.000
AH 32/710	Tr750×7	710	670	515	531	HM/750	—	—	232/710K	—	278.000
AH 32/750	Tr800×7	750	710	540	556	HM/800	—	—	232/750K	—	320.000
AH 32/800	Tr850×7	800	750	550	568	HM/850	—	—	232/800K	—	401.000
AH 32/850	Tr900×7	850	800	585	603	HM/900	—	—	232/850K	—	461.000
AH 32/900	Tr950×8	900	850	585	605	HM/950	—	—	232/900K	—	489.000
AH 32/950	Tr1000×8	950	900	600	620	HM/1000	—	—	232/950K	—	533.000
AH 32/1000	Tr1060×8	1000	950	630	652	HM/1060	—	—	232/1000K	—	608.000
AH 3934	M180×3	170	160	59	64	KML36	—	—	23934K	—	1.590
AH 3936	M190×3	180	170	66	71	KML38	—	—	23936K	—	1.910
AH 3938	M200×3	190	180	66	71	KML40	—	—	23938K	—	2.020
AH 3940	Tr210×4	200	190	77	83	KM42	—	—	23940K	—	2.620
AH 3944	Tr230×4	220	200	77	83	KM46	—	—	23944K	—	4.830
AH 3948	Tr250×4	240	220	77	83	KM50	—	—	23948K	—	5.290
AH 3952	Tr280×4	260	240	94	100	HML56	—	—	23952K	—	7.360
AH 3956	Tr300×4	280	260	94	100	HML60	—	—	23956K	—	8.020
AH 3960	Tr320×5	300	280	112	119	HML64	—	—	23960K	—	10.500
AH 3964	Tr340×5	320	300	112	119	HML68	—	—	23964K	—	11.200



型号 UNIT NO.	螺纹	主要尺寸Dimensions					适用轴承型号Appropriate bearing(s)				重量
	G	d	d1	B1	B4	拆卸螺母 mm	调心球轴承		调心滚子轴承		W.t Kg
	mm	mm	mm	mm	mm		Selg-aligning ball bearing	Spherical roller bearing			
AH 3968	Tr360×5	340	320	112	119	HML72	—	—	23968K	—	11.900
AH 3972	Tr380×5	360	340	112	119	HML76	—	—	23972K	—	12.600
AH 3976	Tr400×5	380	360	130	138	HML80	—	—	23976K	—	15.400
AH 3980	Tr420×5	400	380	130	138	HML84	—	—	23980K	—	16.600
AH 3984	Tr440×5	420	400	130	138	HML88	—	—	23984K	—	17.500
AH 3988	Tr460×5	440	420	145	153	HML92	—	—	23988K	—	21.500
AH 3992	Tr480×5	460	440	145	153	HML96	—	—	23992K	—	22.500
AH 3996	Tr500×5	480	460	158	167	HML/500	—	—	23996K	—	26.000
AH 39/500	Tr530×6	500	480	162	172	HML/530	—	—	239/500K	—	28.000
AH 39/530	Tr560×6	530	500	175	185	HML/560	—	—	239/530K	—	43.400
AH 39/560	Tr600×6	560	530	180	190	HML/600	—	—	239/560K	—	47.400
AH 39/600	Tr630×6	600	570	192	202	HML/630	—	—	239/600K	—	56.100
AH 39/630	Tr670×6	630	600	210	222	HML/670	—	—	239/630K	—	62.800
AH 39/670	Tr710×7	670	630	216	228	HML/710	—	—	239/670K	—	85.500
AH 39/710	Tr750×7	710	670	228	240	HML/750	—	—	239/710K	—	102.000
AH 39/750	Tr800×7	750	710	234	246	HML/800	—	—	239/750K	—	111.000
AH 39/800	Tr850×7	800	750	245	257	HML/850	—	—	239/800K	—	147.000
AH 39/850	Tr900×7	850	800	258	270	HML/900	—	—	239/850K	—	166.000
AH 39/900	Tr950×8	900	850	265	277	HML/950	—	—	239/900K	—	182.000
AH 39/950	Tr1000×8	950	900	282	297	HML/1000	—	—	239/950K	—	216.000
AH 39/1000	Tr1060×8	1000	950	296	311	HML/1060	—	—	239/1000K	—	247.000
AH 39/1060	Tr1120×8	1060	1000	310	325	HML/1120	—	—	239/1060K	—	313.000
AH 24024	M125×2	120	115	73	82	KM25	—	—	24024K30	—	0.700
AH 24026	M135×2	130	125	83	93	KM27	—	—	24026K30	—	0.880
AH 24028	M145×2	140	135	83	93	KM29	—	—	24028K30	—	0.950
AH 24030	M155×3	150	145	90	101	KM31	—	—	24030K30	—	1.050
AH 24032	M170×3	160	150	95	106	KM34	—	—	24032K30	—	2.300
AH 24034	M180×3	170	160	106	117	KM36	—	—	24034K30	—	2.700
AH 24036	M190×3	180	170	116	127	KM38	—	—	24036K30	—	3.200
AH 24038	M200×3	190	180	118	131	KM40	—	—	24038K30	—	3.550
AH 24040	Tr210×4	200	190	127	140	KM42	—	—	24040K30	—	4.000
AH 24044	Tr230×4	220	200	138	152	KM46	—	—	24044K30	—	8.220
AH 24048	Tr250×4	240	220	138	153	KM50	—	—	24048K30	—	9.030
AH 24052	Tr280×4	260	240	162	178	KM56	—	—	24052K30	—	12.500
AH 24056	Tr300×4	280	260	162	179	HM60	—	—	24056K30	—	13.200
AH 24060	Tr320×5	300	280	184	202	HM64	—	—	24060K30	—	17.000
AH 24064	Tr340×5	320	300	184	202	HM68	—	—	24064K30	—	17.400
AH 24068	Tr360×5	340	320	206	225	HM72	—	—	24068K30	—	21.000
AH 24072	Tr380×5	360	340	206	226	HM76	—	—	24072K30	—	22.400
AH 24076	Tr400×5	380	360	208	228	HM80	—	—	24076K30	—	23.800
AH 24080	Tr420×5	400	380	228	248	HM84	—	—	24080K30	—	27.900
AH 24084	Tr440×5	420	400	230	252	HM88	—	—	24084K30	—	29.000

型号 UNIT NO.	螺纹 G mm	主要尺寸Dimensions					适用轴承型号Appropriate bearing(s)				重量 W.t Kg
		d mm	d1 mm	B1 mm	B4 mm	拆卸螺母 mm	调心球轴承		调心滚子轴承		
							Self-aligning ball bearing	Spherical roller bearing			
AH 24088	Tr460×5	440	420	242	264	HM92	—	—	24088K30	—	32.000
AH 24092	Tr480×5	460	440	250	273	HM96	—	—	24092K30	—	34.700
AH 24096	Tr500×5	480	460	250	273	HM/500	—	—	24096K30	—	37.300
AH 240/500	Tr530×6	500	480	253	276	HM/530	—	—	240/500K30	—	41.700
AH 240/530	Tr560×6	530	500	285	309	HM/560	—	—	240/530K30	—	69.500
AH 240/560	Tr600×6	560	530	296	320	HM/600	—	—	240/560K30	—	79.500
AH 240/600	Tr630×6	600	570	310	336	HM/630	—	—	240/600K30	—	86.500
AH 240/630	Tr670×6	630	600	330	356	HM/670	—	—	240/630K30	—	101.000
AH 240/670	Tr710×7	670	630	348	374	HM/710	—	—	240/670K30	—	140.000
AH 240/710	Tr750×7	710	670	360	386	HM/750	—	—	240/710K30	—	155.000
AH 240/750	Tr800×7	750	710	380	408	HM/800	—	—	240/750K30	—	178.000
AH 240/800	Tr850×7	800	750	395	423	HM/850	—	—	240/800K30	—	237.000
AH 240/850	Tr900×7	850	800	415	445	HM/900	—	—	240/850K30	—	265.000
AH 240/900	Tr950×8	900	850	430	475	HM/950	—	—	240/900K30	—	296.000
AH 240/950	Tr1000×8	950	900	467	512	HM/1000	—	—	240/950K30	—	340.000
AH 240/1000	Tr1060×8	1000	950	469	519	HM/1060	—	—	240/1000K30	—	369.000
AH 240/1060	Tr1120×8	1060	1000	498	548	HM/1120	—	—	240/1060K30	—	479.000
AH 24122	M115×2	110	105	82	91	KM23	—	—	24122K30	—	0.710
AH 24124	M130×2	120	115	93	102	KM26	—	—	24124K30	—	1.000
AH 24126	M140×2	130	125	94	104	KM28	—	—	24126K30	—	1.150
AH 24128	M150×2	140	135	99	109	KM30	—	—	24128K30	—	1.300
AH 24130	M160×3	150	145	115	126	KM32	—	—	24130K30	—	1.550
AH 24132	M170×3	160	150	124	135	KM34	—	—	24132K30	—	3.000
AH 24134	M180×3	170	160	125	136	KM36	—	—	24134K30	—	3.250
AH 24136	M190×3	180	170	134	145	KM38	—	—	24136K30	—	3.750
AH 24138	M200×3	190	180	146	159	KM40	—	—	24138K30	—	4.450
AH 24140	Tr210×4	200	190	158	171	KM42	—	—	24140K30	—	5.050
AH 24144	Tr230×4	220	200	170	184	KM46	—	—	24144K30	—	10.000
AH 24148	Tr260×4	240	220	180	195	KM52	—	—	24148K30	—	12.500
AH 24152	Tr280×4	260	240	202	218	KM56	—	—	24152K30	—	15.600
AH 24156	Tr300×4	280	260	202	219	HM60	—	—	24156K30	—	16.600
AH 24160	Tr320×5	300	280	224	242	HM64	—	—	24160K30	—	20.100
AH 24164	Tr340×5	320	300	242	260	HM68	—	—	24164K30	—	23.400
AH 24168	Tr360×5	340	320	269	288	HM72	—	—	24168K30	—	28.100
AH 24172	Tr380×5	360	340	269	289	HM76	—	—	24172K30	—	29.900
AH 24176	Tr400×5	380	360	271	291	HM80	—	—	24176K30	—	31.800
AH 24180	Tr420×5	400	380	278	298	HM84	—	—	24180K30	—	35.000
AH 24184	Tr440×5	420	400	310	332	HM88	—	—	24184K30	—	39.000
AH 24188	Tr460×5	440	420	310	332	HM92	—	—	24188K30	—	43.200
AH 24192	Tr480×5	460	440	332	355	HM96	—	—	24192K30	—	49.100
AH 24196	Tr500×5	480	460	340	363	HM/500	—	—	24196K30	—	51.500
AH 241/500	Tr530×6	500	480	360	383	HM/530	—	—	241/500K30	—	63.000
AH 241/530	Tr560×6	530	500	370	394	HM/560	—	—	241/530K30	—	91.500
AH 241/560	Tr600×6	560	530	393	417	HM/600	—	—	241/560K30	—	104.800
AH 241/600	Tr630×6	600	570	413	439	HM/630	—	—	241/600K30	—	120.000
AH 241/630	Tr670×6	630	600	440	466	HM/670	—	—	241/630K30	—	139.000
AH 241/670	Tr710×7	670	630	452	478	HM/710	—	—	241/670K30	—	185.000
AH 241/710	Tr750×7	710	670	483	509	HM/750	—	—	241/710K30	—	212.000
AH 241/750	Tr800×7	750	710	520	548	HM/800	—	—	241/750K30	—	248.000
AH 241/800	Tr850×7	800	750	525	553	HM/850	—	—	241/800K30	—	318.000
AH 241/850	Tr900×7	850	800	560	600	HM/900	—	—	241/850K30	—	368.000
AH 241/900	Tr950×8	900	850	575	620	HM/950	—	—	241/900K30	—	402.000
AH 241/950	Tr1000×8	950	900	605	650	HM/1000	—	—	241/950K30	—	449.000
AH 241/1000	Tr1060×8	1000	950	645	695	HM/1060	—	—	241/1000K30	—	519.000
AH 241/1060	Tr1120×8	1060	1000	665	715	HM/1120	—	—	241/1060K30	—	652.000

锁紧螺母 Lock nut



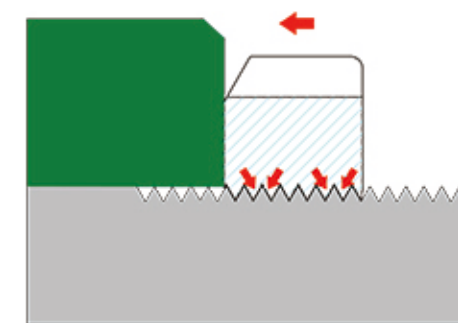
锁紧螺母用于将某些机械部件定位在轴上，或配合紧定套的锁紧，拆卸套的锁紧、拆卸使用。是一种常用的紧固类零件。

锁紧螺母有四槽和八槽，紧定时可以使用钩头扳手、环形内齿套筒扳手进行安装，这样避免损坏槽边缘，通过螺母和轴螺纹之间的啮合达到锁紧，同时配合使用止动垫圈或锁紧卡防止自退，也可通过使用螺钉与外部件连接止退。

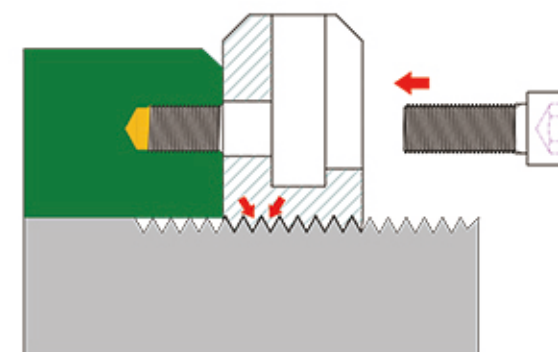
Lock nut is used to position mechanical parts on the shaft, or cooperate with the locking of the adapter sleeve, disassembling the withdrawal sleeve. It is a kind of commonly used fastening parts.

Lock nut has four slots and eight slots. When tightening, it can be installed with a hook wrench and an annular internal tooth socket wrench, so as to avoid damage to the edge of the slot, and the locking is achieved through the engagement between the nut and the shaft thread. A moving washer or a locking card prevents self-retraction, and it can also be connected to the outer part by using a screw to prevent it from retreating.

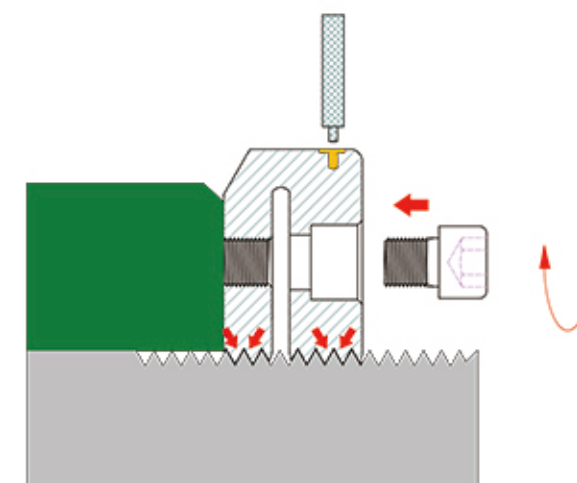
方式1:
Model1



方式2:
Model2

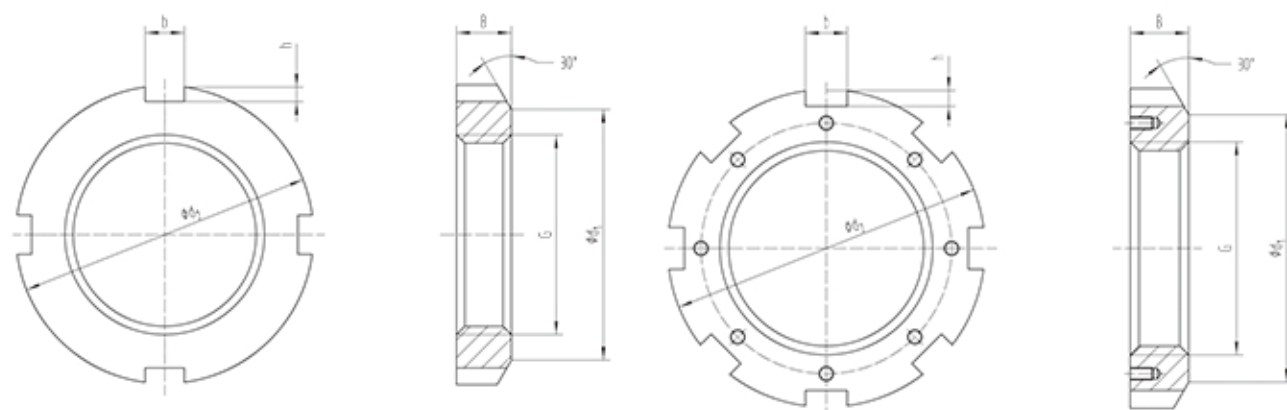


方式3: (HMZ)
Model3



公制代号 (Metric) : KM** ; KML ; HM*** ; HML***
GB公制尺寸等同JIS标准的AN*** ; HN*** ; ANL*** ; HNL
GB Metric same as JIS
GB公差与DIN不同，详情请咨询艾威传动。
GB different from DIN, details please consult with IVY POWER.

英制代号 (Inch) : N*** ; TN*** ; TAN*** ; AN*** ; RN*** ; ARN***

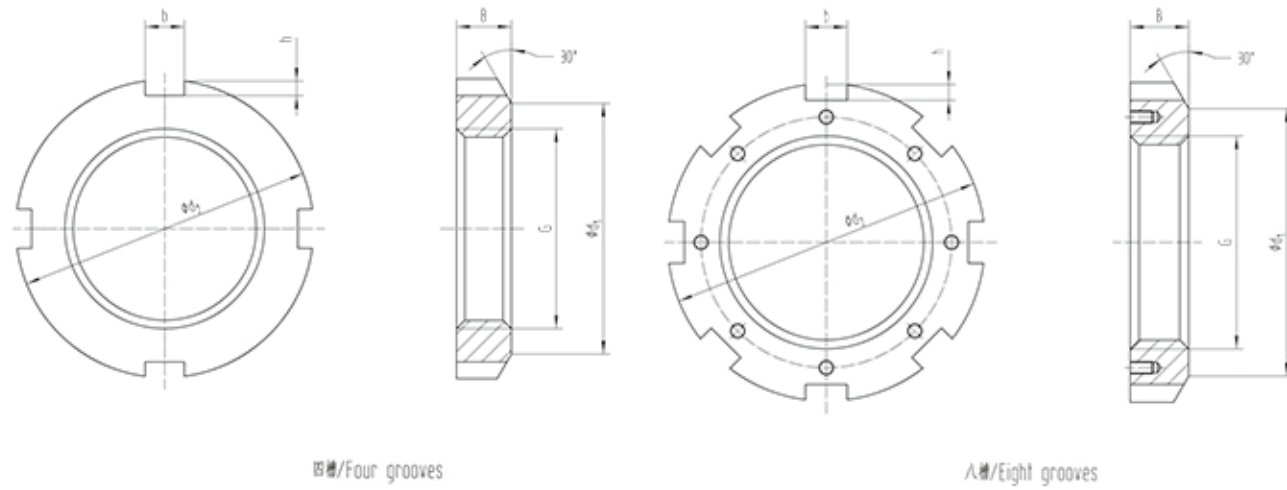


四槽/Four grooves

八槽/Eight grooves

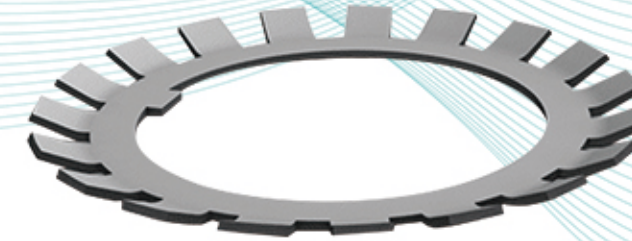
型号 UNIT NO.	螺纹 G mm	d mm	主要尺寸Dimensions					锁紧垫圈 Lock washer	锁紧卡 Lock card	重量 W.t Kg
			d1 mm	d2 mm	B mm	b mm	h mm			
KM05	M25×1.5	25	32	38	7	5	2	MB05	—	0.028
KM06	M30×1.5	30	38	45	7	5	2	MB06	—	0.038
KM07	M35×1.5	35	44	52	8	5	2	MB07	—	0.058
KM08	M40×1.5	40	50	58	9	6	2.5	MB08	—	0.078
KM09	M45×1.5	45	56	65	10	6	2.5	MB09	—	0.11
KM10	M50×1.5	50	61	70	11	6	2.5	MB10	—	0.14
KM11	M55×2	55	67	75	11	7	3	MB11	—	0.15
KM12	M60×2	60	73	80	11	7	3	MB12	—	0.16
KM13	M65×2	65	79	85	12	7	3	MB13	—	0.19
KM14	M70×2	70	85	92	12	8	3.5	MB14	—	0.22
KM15	M75×2	75	90	98	13	8	3.5	MB15	—	0.27
KM16	M80×2	80	95	105	15	8	3.5	MB16	—	0.36
KM17	M85×2	85	102	110	16	8	3.5	MB17	—	0.42
KM18	M90×2	90	108	120	16	10	4	MB18	—	0.51
KM19	M95×2	95	113	125	17	10	4	MB19	—	0.58
KM20	M100×2	100	120	130	18	10	4	MB20	—	0.68
KM21	M105×2	105	126	140	18	12	5	MB21	—	0.81
KM22	M110×2	110	133	145	19	12	5	MB22	—	0.89
KM23	M115×2	115	137	150	19	12	5	MB23	—	0.91
KM24	M120×2	120	138	155	20	12	5	MB24	—	0.98
KM25	M125×2	125	148	160	21	12	5	MB25	—	1.1
KM26	M130×2	130	149	165	21	12	5	MB26	—	1.2
KM27	M135×2	135	160	175	22	14	6	MB27	—	1.4
KM28	M140×2	140	160	180	22	14	6	MB28	—	1.4
KM29	M145×2	145	171	190	24	14	6	MB29	—	1.85
KM30	M150×2	150	171	195	24	14	6	MB30	—	1.85
KM31	M155×3	155	182	200	25	16	7	MB31	—	2.05
KM32	M160×3	160	182	210	25	16	7	MB32	—	2.25
KM33	M165×3	165	193	210	26	16	7	MB33	—	2.3
KM34	M170×3	170	193	220	26	16	7	MB34	—	2.55
KM36	M180×3	180	203	230	27	18	8	MB36	—	2.7
KM38	M190×3	190	214	240	28	18	8	MB38	—	3
KM40	M200×3	200	226	250	29	18	8	MB40	—	3.3

型号 UNIT NO.	螺纹 G mm	d mm	主要尺寸Dimensions					锁紧垫圈 Lock washer	锁紧卡 Lock card	重量 W.t Kg
			d1 mm	d2 mm	B mm	b mm	h mm			
KML24	M120×2	120	135	145	20	12	5	MBL24	—	0.69
KML26	M130×2	130	145	155	21	12	5	MBL26	—	0.84
KML28	M140×2	140	155	165	22	14	5	MBL28	—	0.92
KML30	M150×2	150	170	180	24	14	5	MBL30	—	1.3
KML32	M160×3	160	180	190	25	16	5	MBL32	—	1.4
KML34	M170×3	170	190	200	26	16	5	MBL34	—	1.6
KML36	M180×3	180	200	210	27	18	5	MBL36	—	1.8
KML38	M190×3	190	210	220	28	18	5	MBL38	—	1.9
KML40	M200×3	200	222	240	29	18	8	MBL40	—	2.6
HML44	Tr220×4	220	242	260	30	20	9	—	MSL44	3.1
HML48	Tr240×4	240	270	290	34	20	10	—	MSL48	4.5
HML52	Tr260×4	260	290	310	34	20	10	—	MSL48	4.8
HML56	Tr280×4	280	310	330	38	24	10	—	MSL56	5.75
HML60	Tr300×4	300	336	360	42	24	12	—	MSL60	8.35
HML64	Tr320×5	320	356	380	42	24	12	—	MSL64	9
HML68	Tr340×5	340	376	400	45	24	12	—	MSL64	11
HML72	Tr360×5	360	394	420	45	28	13	—	MSL72	11.5
HML76	Tr380×5	380	422	450	48	28	14	—	MSL76	15
HML80	Tr400×5	400	442	470	52	28	14	—	MSL76	17
HML84	Tr420×5	420	462	490	52	32	14	—	MSL84	18.5
HML88	Tr440×5	440	490	520	60	32	15	—	MSL88	26
HML92	Tr460×5	460	510	540	60	32	15	—	MSL88	27
HML96	Tr480×5	480	530	560	60	36	15	—	MSL96	28
HML/500	Tr500×5	500	550	580	68	36	15	—	MSL/96	33.5
HML/530	Tr530×6	530	590	630	68	40	20	—	MSL/530	42.5
HML/560	Tr560×6	560	610	650	75	40	20	—	MSL/560	44.5
HML/600	Tr600×6	600	660	700	75	40	20	—	MSL/560	52.5
HML/630	Tr630×6	630	690	730	75	45	20	—	MSL/630	55
HML/670	Tr670×6	670	740	780	80	45	20	—	MSL/670	68.5
HML/710	Tr710×7	710	780	830	90	50	25	—	MSL/710	91.5
HML/750	Tr750×7	750	820	870	90	55	25	—	MSL/750	94
HML/800	Tr800×7	800	870	920	90	55	25	—	MSL/750	99.5
HML/850	Tr850×7	850	920	980	90	60	25	—	MSL/850	115
HML/900	Tr900×7	900	975	1030	100	60	25	—	MSL/850	131
HML/950	Tr950×8	950	1025	1080	100	60	25	—	MSL/950	139
HML/1000	Tr1000×8	1000	1085	1140	100	60	25	—	MSL/1000	157
HML/1060	Tr1060×8	1060	1145	1200	100	60	25	—	MSL/1000	166
HML/1120	Tr1120×8	1120	1205	1260	100	60	25	—	MSL/1000	175



型号 UNIT NO.	螺纹 G mm	d mm	主要尺寸Dimensions					锁紧垫圈 Lock washer	锁紧卡 Lock card	重量 W.t Kg
			d1 mm	d2 mm	B mm	b mm	h mm			
HM44	Tr220×4	220	250	280	32	20	10	MB44	MS44	5.1
HM48	Tr240×4	240	270	300	34	20	10	MB48	MS44	5.65
HM52	Tr260×4	260	300	330	36	24	12	MB52	MS52	7.55
HM56	Tr280×4	280	320	350	38	24	12	MB56	MS52	8.65
HM60	Tr300×4	300	340	380	40	24	12	—	MS60	11.5
HM64	Tr320×5	320	360	400	42	24	12	—	MS64	13
HM68	Tr340×5	340	400	440	55	28	15	—	MS68	24
HM72	Tr360×5	360	420	460	58	28	15	—	MS68	26.5
HM76	Tr380×5	380	440	490	60	32	18	—	MS76	32
HM80	Tr400×5	400	460	520	62	32	18	—	MS80	38
HM84	Tr420×5	420	490	540	70	32	18	—	MS80	45
HM88	Tr440×5	440	510	560	70	36	20	—	MS88	46.5
HM92	Tr460×5	460	540	580	75	36	20	—	MS88	50.5
HM96	Tr480×5	480	560	620	75	36	20	—	MS96	62
HM/500	Tr500×5	500	580	630	80	40	23	—	MS/500	63.5
HM/530	Tr530×6	530	610	670	80	40	23	—	MS/530	71.5
HM/560	Tr560×6	560	650	710	85	45	25	—	MS/560	86.5
HM/600	Tr600×6	600	690	750	85	45	25	—	MS/560	91.5
HM/630	Tr630×6	630	730	800	95	50	28	—	MS/630	125
HM/670	Tr670×6	670	775	850	106	50	28	—	MS/670	155
HM/710	Tr710×7	710	825	900	106	55	30	—	MS/710	162
HM/750	Tr750×7	750	875	950	112	60	34	—	MS/750	190
HM/800	Tr800×7	800	925	1000	112	60	34	—	MS/750	202
HM/850	Tr850×7	850	975	1060	118	70	38	—	MS/850	234
HM/900	Tr900×7	900	1030	1120	125	70	38	—	MS/900	279
HM/950	Tr950×8	950	1080	1170	125	70	38	—	MS/950	293
HM/1000	Tr1000×8	1000	1140	1240	125	70	38	—	MS/1000	336
HM/1060	Tr1060×8	1060	1210	1300	125	70	38	—	MS/1000	354

锁紧垫圈 Lock Washer



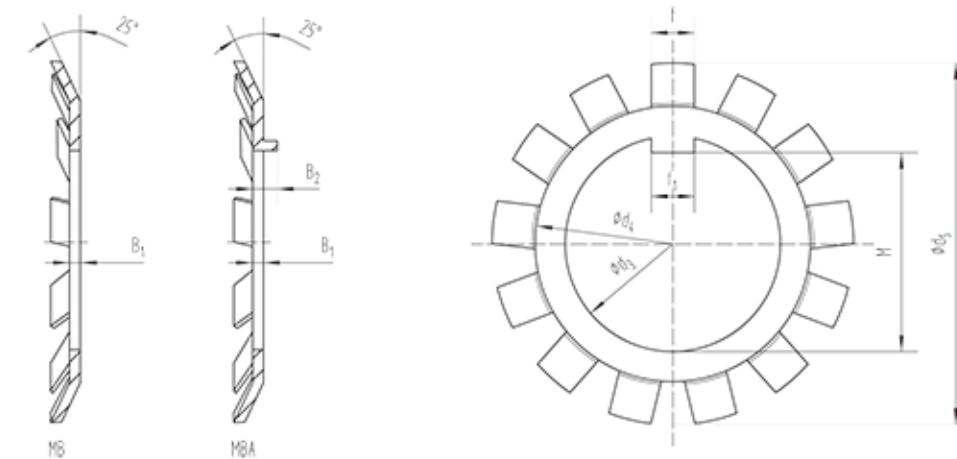
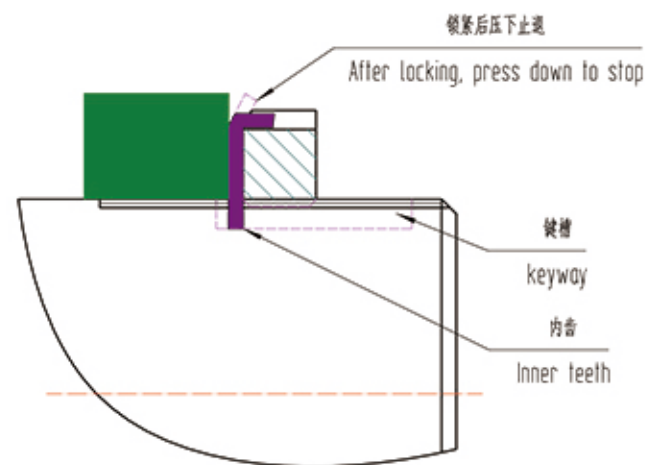
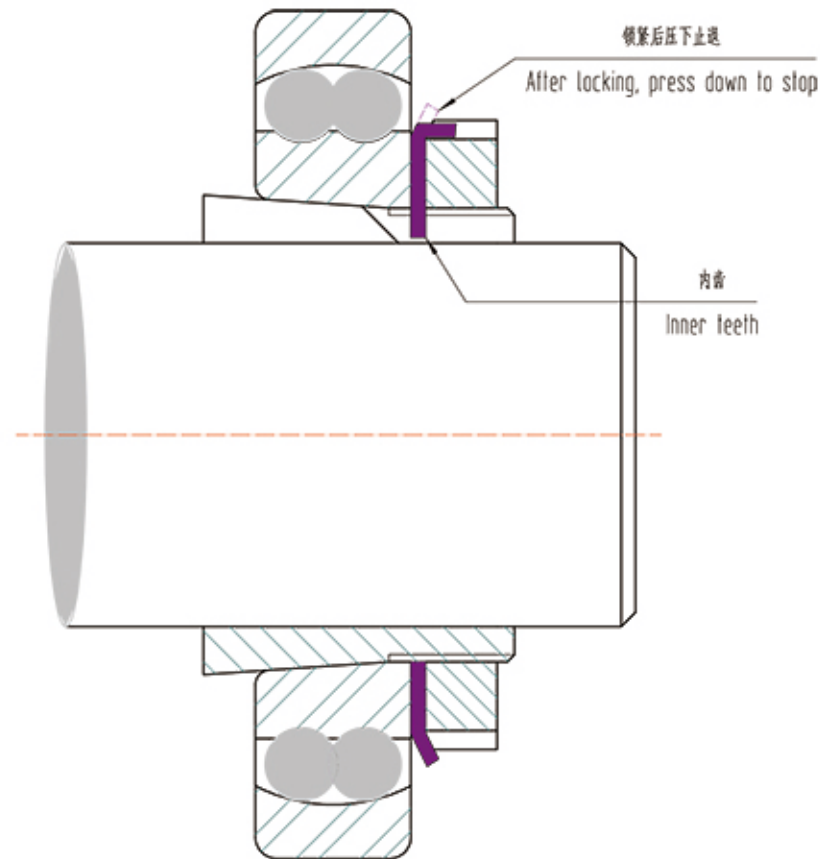
爪式锁紧垫圈用于固定锁紧螺母。锁紧垫圈内齿和均布的外齿，内齿夹持在衬套或轴上的槽内，外齿弯至螺母槽内防止松退。

Claw lock washers are used to secure lock nuts. The inner teeth of the lock washer and the evenly distributed outer teeth, the inner teeth are clamped in the grooves on the bushing or the shaft, and the outer teeth are bent into the nut grooves to prevent loosening.

公制代号 (Metric) : (直内齿straight inner teeth) : MB** ; MBL**
(弯内齿curved inner teet) : MBA**

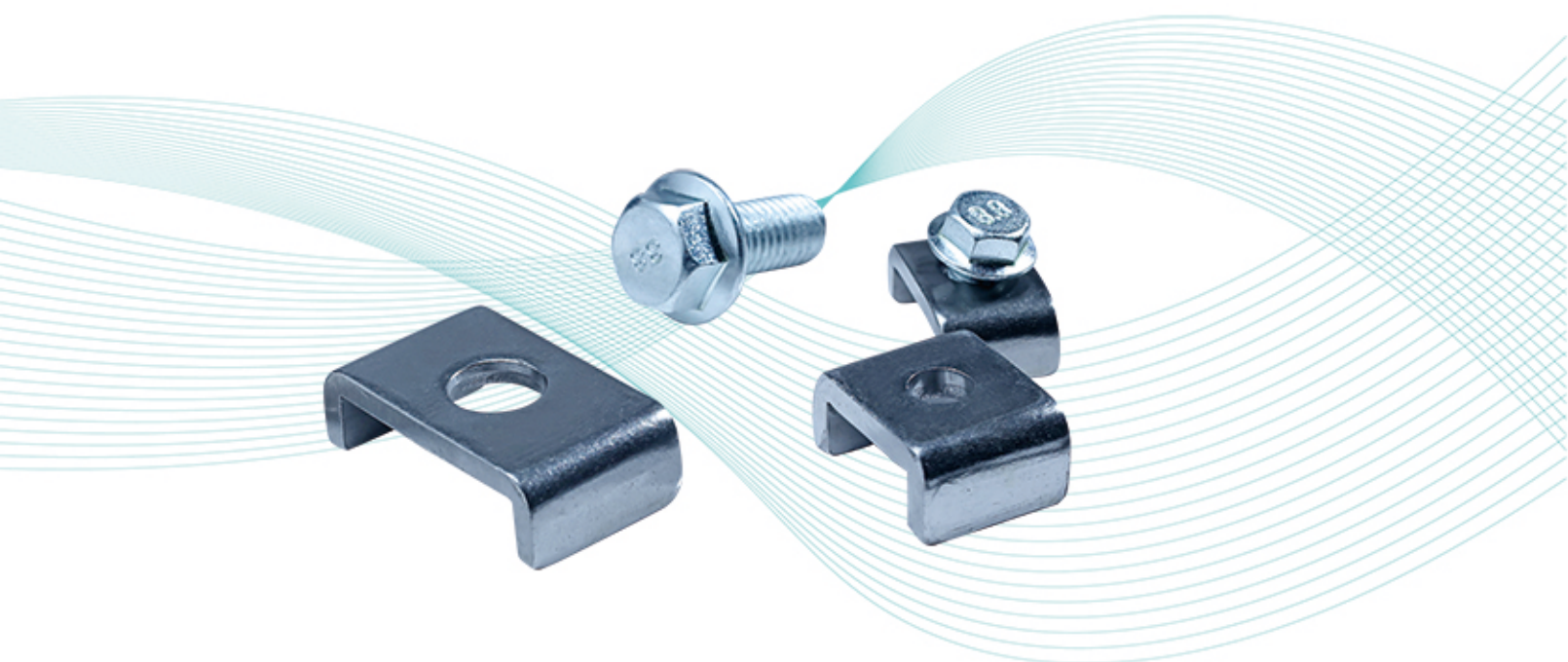
英制代号 (Inch) : W** ; TW** ; WH**

JIS代号(JIS): AW*** ; AWL***



型号 UNIT NO.		锁紧垫圈 Kock washer (MB、MBA、MBL、MBAL系列) 主要尺寸 Dimentions								外爪数 n min
MB型	MBA型	d3 mm	d4 mm	d5 mm	f1 mm	M mm	f mm	B1 mm	B2 mm	
MB05	MBA05	25	32	42	5	23	5	1.25	4	13
MB06	MBA06	30	38	49	5	27.5	5	1.25	4	13
MB07	MBA07	35	44	57	6	32.5	5	1.25	4	13
MB08	MBA08	40	50	62	6	37.5	6	1.25	5	13
MB09	MBA09	45	56	69	6	42.5	6	1.25	5	13
MB10	MBA10	50	61	74	6	47.5	6	1.25	5	13
MB11	MBA11	55	67	81	8	52.5	7	1.5	5	17
MB12	MBA12	60	73	86	8	57.5	7	1.5	6	17
MB13	MBA13	65	79	92	8	62.5	7	1.5	6	17
MB14	MBA14	70	85	98	8	66.5	8	1.5	6	17
MB15	MBA15	75	90	104	8	71.5	8	1.5	6	17
MB16	MBA16	80	95	112	10	76.5	8	1.8	6	17
MB17	MBA17	85	102	119	10	81.5	8	1.8	6	17
MB18	MBA18	90	108	126	10	86.5	10	1.8	8	17
MB19	MBA19	95	113	133	10	91.5	10	1.8	8	17
MB20	MBA20	100	120	142	12	96.5	10	1.8	8	17
MB21	MBA21	105	126	145	12	100.5	12	1.8	10	17
MB22	MBA22	110	133	154	12	105.5	12	1.8	10	17
MB23	MBA23	115	137	159	12	110.5	12	2	10	17
MB24	MBA24	120	138	164	14	115	12	2	10	17
MB25	MBA25	125	148	170	14	120	12	2	10	17
MB26	MBA26	130	149	175	14	125	12	2	10	17
MB27	MBA27	135	160	185	14	130	14	2	10	17
MB28	MBA28	140	160	192	16	135	14	2	10	17
MB29	MBA29	145	171	202	16	140	14	2	10	17
MB30	MBA30	150	171	205	16	145	14	2	10	17
MB31	MBA31	155	182	212	16	147.5	16	2.5	12	19
MB32	MBA32	160	182	217	18	154	16	2.5	12	19
MB33	MBA33	165	193	222	18	157.5	16	2.5	12	19
MB34	MBA34	170	193	232	18	164	16	2.5	12	19
MB36	MBA36	180	203	242	20	174	18	2.5	12	19
MB38	MBA38	190	214	252	20	184	18	2.5	12	19
MB40	MBA40	200	226	262	20	194	18	2.5	12	19
MB44	MBA44	220	250	292	24	213	20	3	—	19
MB48	MBA48	240	270	312	24	233	20	3	—	19
MB52	MBA52	260	300	342	28	253	24	3	—	19
MB56	MBA56	280	320	362	28	273	24	3	—	19
MBL24	MBAL24	120	135	151	14	115	12	2	6	19
MBL26	MBAL26	130	145	161	14	125	12	2	6	19
MBL28	MBAL28	140	155	171	16	135	14	2	8	19
MBL30	MBAL30	150	170	188	16	145	14	2	8	19
MBL32	MBAL32	160	180	199	18	154	16	2.5	8	19
MBL34	MBAL34	170	190	211	18	164	16	2.5	8	19
MBL36	MBAL36	180	200	221	20	174	18	2.5	8	19
MBL38	MBAL38	190	210	231	20	184	18	2.5	8	19
MBL40	MBAL40	200	222	248	20	194	18	2.5	8	19

锁紧卡 Locking Card

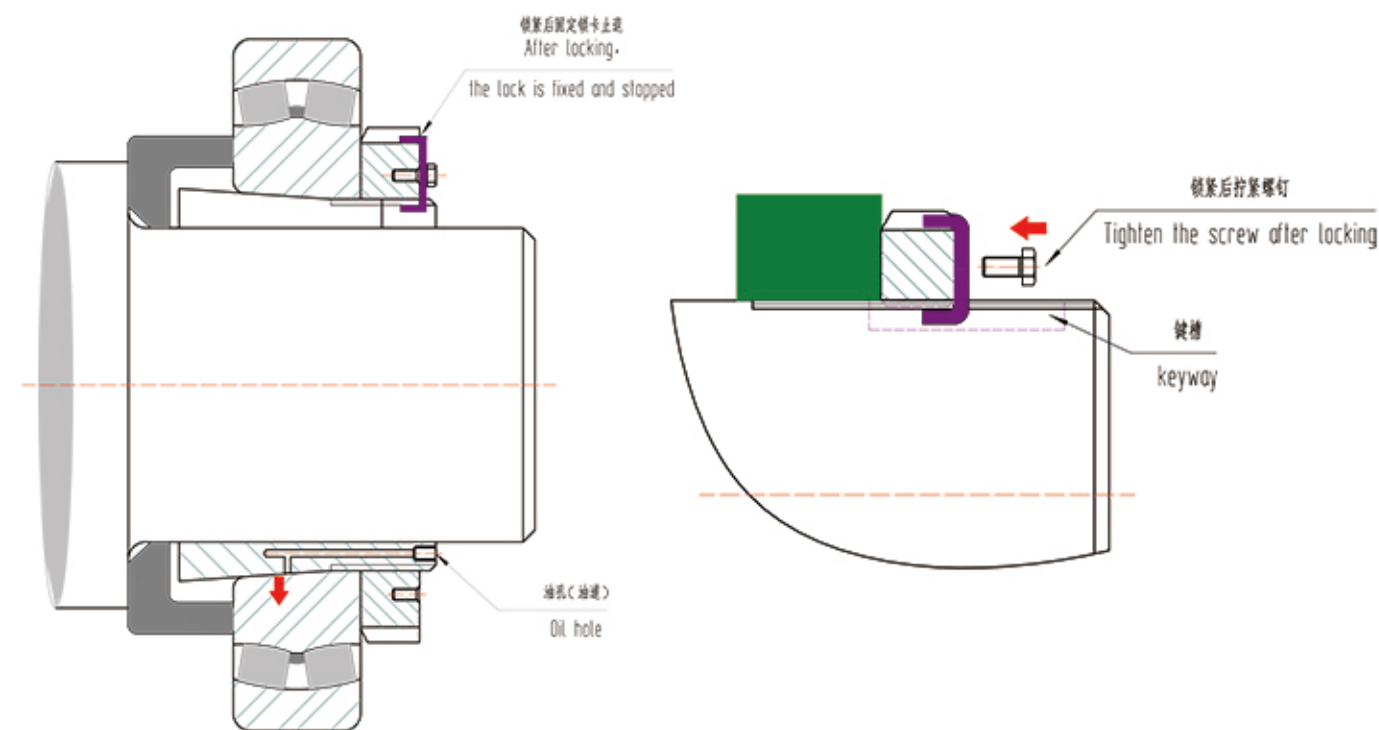
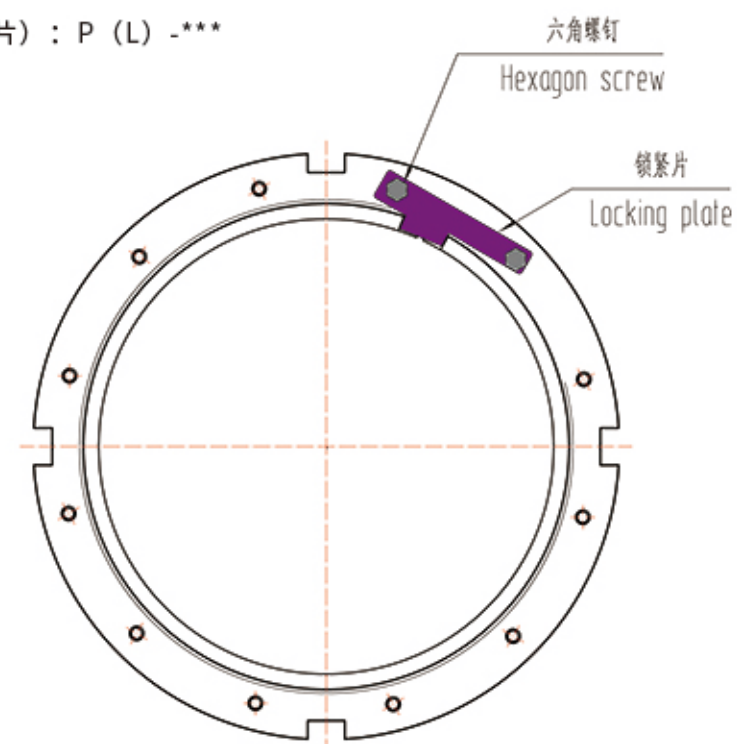


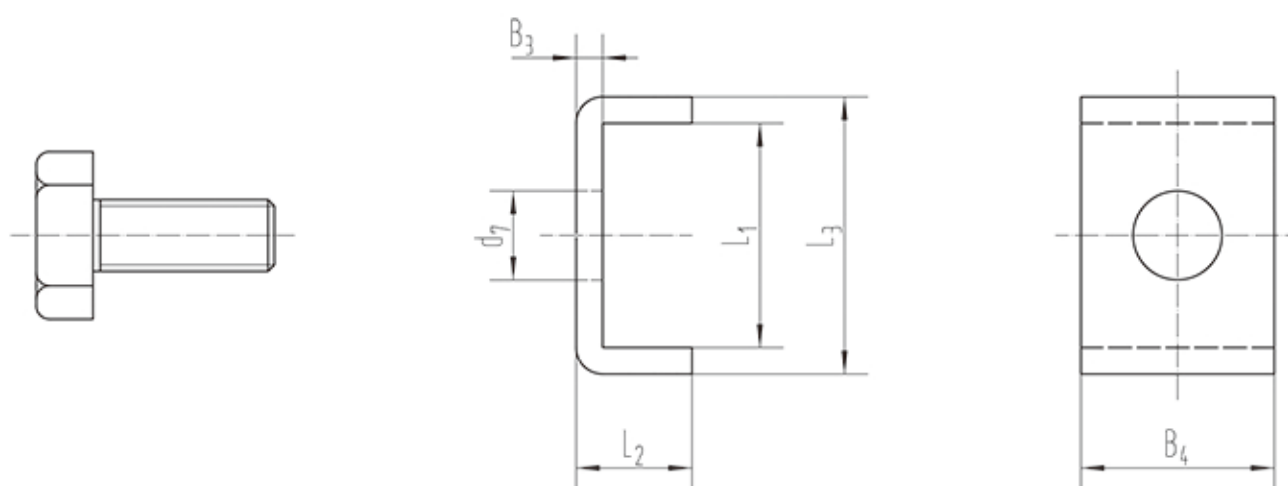
锁紧卡（扣）用于较大的紧定套或锁紧螺母上，啮合在衬套槽和螺母上用于六角螺钉固定防止松动，或啮合在有槽的轴和螺母上使用六角螺钉固定防止松动。而英制使用锁紧片，其齿啮合在衬套或有槽的轴上，使用两个六角螺钉固定防止其松动。

Locking card (buckles) are used on larger adapter sleeves or lock nuts, engaged on bushing slots and nuts for hex screw fixing to prevent loosening, or engaged on slotted shafts and nuts with hex screws prevent loosening. The inch system uses a locking piece, the teeth of which engage on a bushing or a slotted shaft and are secured with two hex screws to prevent it from loosening.

公制代号 (Metric) : MS*** ; MSL***

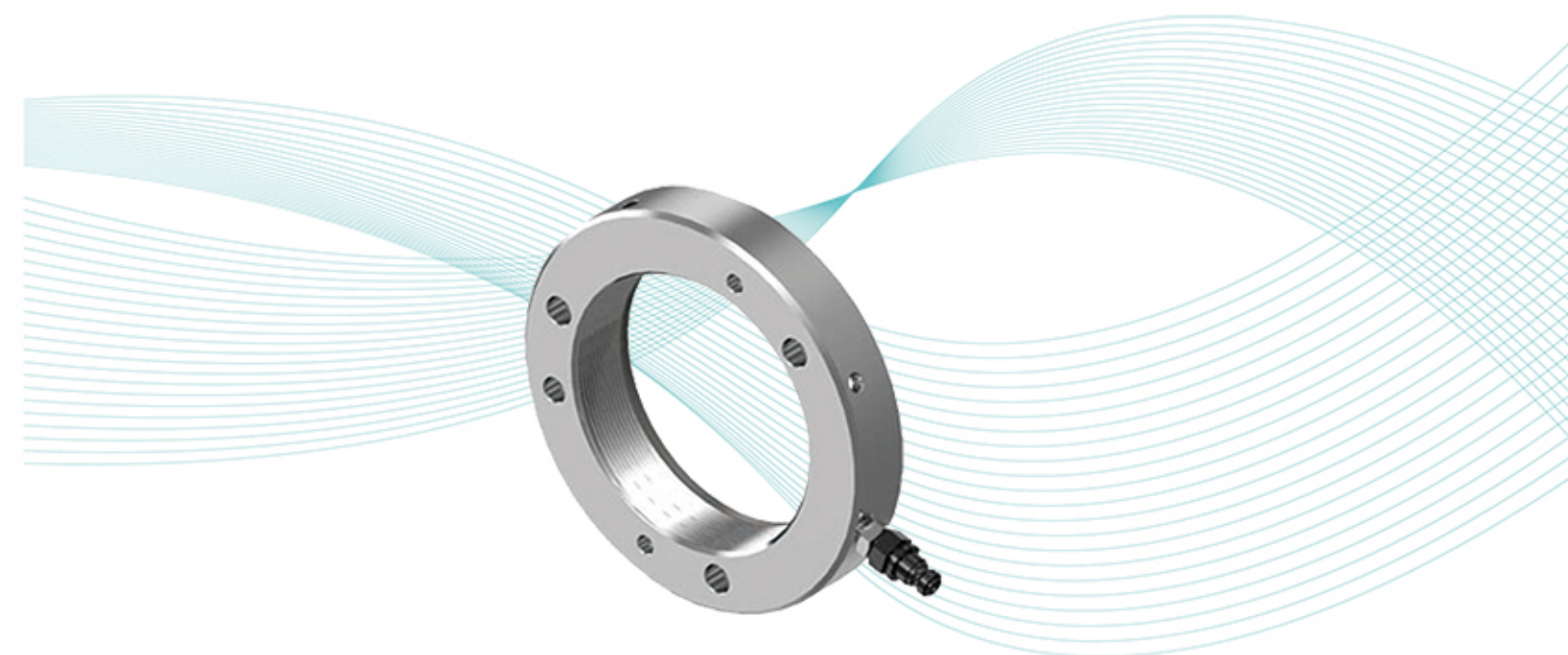
英制代号 (Inch) (锁片) : P (L) -***





型号 UNIT NO.	锁紧卡 Lock card (MS、MSL系列) 主要尺寸Dimensions						螺栓 Bolt
	B3 mm	B4 mm	L2 mm	d7 mm	L3 mm	L1 mm	
MS44	4	20	12	9	30.5	22.5	M8×16
MS52	4	24	12	12	33.5	25.5	M10×20
MS60	4	24	12	12	38.5	30.5	M10×20
MS64	5	24	15	12	41	31	M10×20
MS68	5	28	15	14	48	38	M12×25
MS76	5	32	15	14	50	40	M12×25
MS80	5	32	15	18	55	45	M16×30
MS88	5	36	15	18	53	43	M16×30
MS96	5	36	15	18	63	53	M16×30
MS/500	5	40	15	18	55	45	M16×30
MS/530	7	40	21	22	65	51	M20×40
MS/560	7	45	21	22	68	54	M20×40
MS/630	7	50	21	22	75	61	M20×40
MS/670	7	50	21	22	80	66	M20×40
MS/710	7	55	21	26	83	69	M20×50
MS/750	7	60	21	26	84	70	M20×50
MS/850	7	70	21	26	85	71	M20×50
MS/900	7	70	21	26	90	76	M24×50
MS/950	7	70	21	26	92	78	M24×50
MS/1060	7	70	21	26	102	88	M24×50
MSL44	4	20	12	7	21.5	13.5	M6×12
MSL48	4	20	12	9	25.5	17.5	M8×16
MSL56	4	24	12	9	25.5	17.5	M8×16
MSL60	4	24	12	9	28.5	20.5	M8×16
MSL64	5	24	15	9	31	21	M8×16
MSL72	5	28	15	9	30	20	M8×16
MSL76	5	28	15	12	34	24	M10×20
MSL84	5	32	15	12	34	24	M10×20
MSL88	5	32	15	14	38	28	M12×25
MSL96	5	36	15	14	38	28	M12×25
MSL/530	7	40	21	18	48	34	M16×30
MSL/560	7	40	21	18	43	29	M16×30
MSL/630	7	45	21	18	48	34	M16×30
MSL/670	7	45	21	18	53	39	M16×30
MSL/710	7	50	21	18	53	39	M16×30
MSL/750	7	55	21	18	53	39	M16×30
MSL/850	7	60	21	22	58	44	M20×40
MSL/950	7	60	21	22	60	46	M20×40
MSL/1000	7	60	21	22	65	51	M20×40

液压螺母 Hydraulic nuts



液压螺母可以将轴承精准的安装在锥形轴、紧定套、退卸套的合适位置，在拆卸时加以辅助工具也可以将轴承脱离轴和衬套，避免不合理的安装、拆卸方法造成轴的损伤问题，同时也节省劳动力。

液压螺母也使用于高驱动的压紧装配，例如船舶螺旋桨、联轴器和齿轮等。

The hydraulic nut can accurately install the bearing to the appropriate position of the tapered shaft, adapter sleeve and withdrawal sleeve, the auxiliary tool can also be used to remove the bearing from the shaft and bushing during disassembly, so as to avoid unreasonable installation and disassembly methods which cause shaft damage problem, but also save labor.

Hydraulic nuts are also used in high drive compression assemblies such as marine propellers, couplings and gears.

公制代号 (Metric) : IV-HMV***E

螺纹精度 (Thread): IV-HMV 10E - HMV 40E ISO 965/111-1980 公差级数(Tolerance) 6H
IV-HMV 41E - HMV 200E ISO 2901-1977 公差级数(Tolerance) 7H

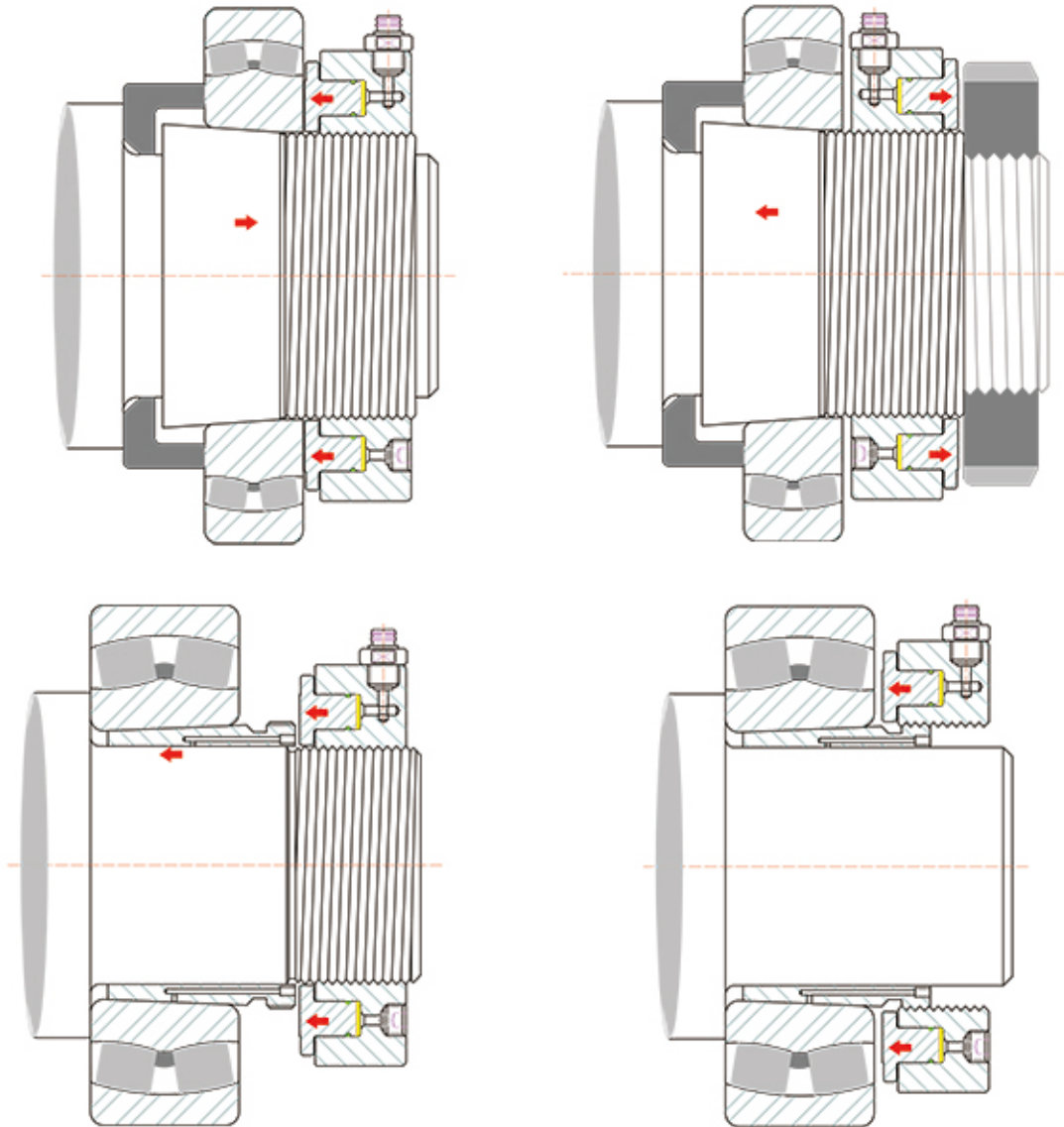
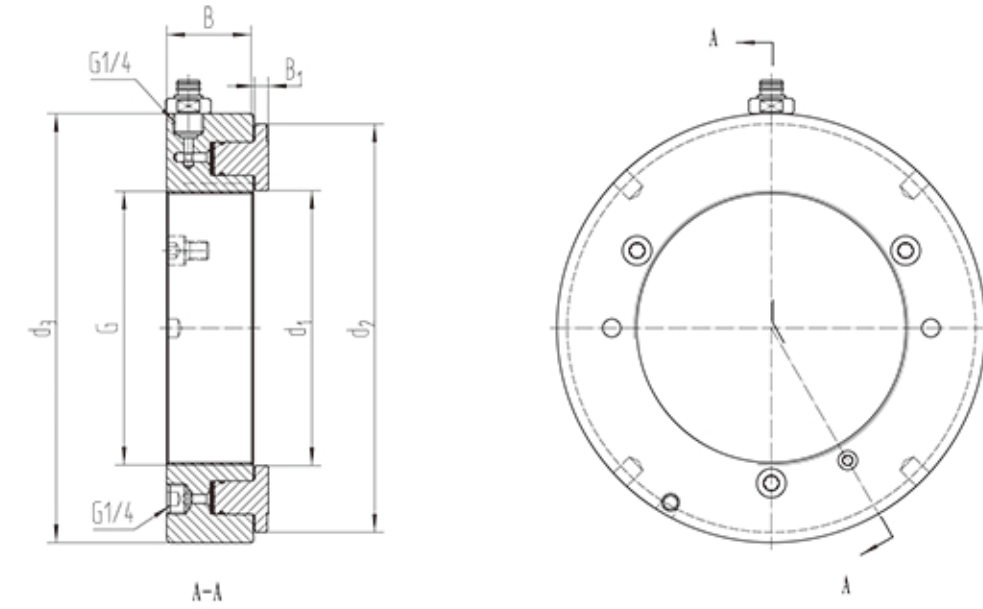
英制代号 (Inch) : IV-HMVE***E

螺纹精度(Thread): IV-HMVC 10E - HMVC 64, 美制螺纹标准(Thread of American Standard)3类
IV-HMVC 68E - HMVC 190E, ACME 通用螺纹(Universal thread) 3G 类

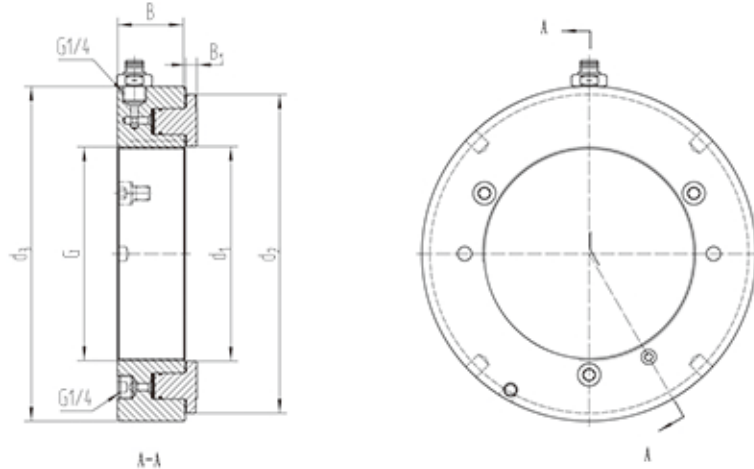
特殊螺纹也可定制。Special threads can be customized.

配合使用的压力泵需单独选购。

The pressure pump used with it must be purchased separately



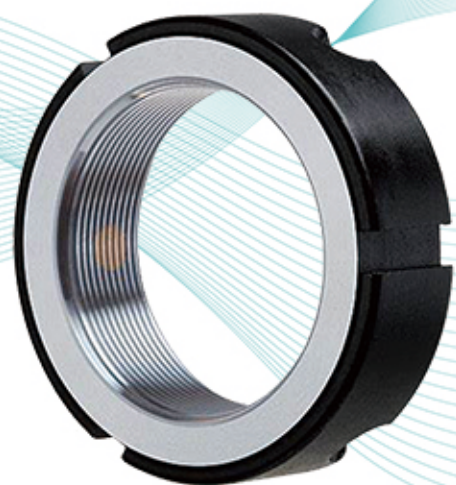
型号 UNIT NO.	G 螺纹 Thread	d1 mm	d2 mm	主要尺寸Dimensions			允许活塞位移 Permitted piston displacement	活塞区域 Piston area	重量 WT (KG)
				d3 mm	B mm	B1 mm			
IV-HMV 10E	M 50x1.5	50.5	104	114	38	4	5	2900	2.7
IV-HMV 11E	M 55x2	55.5	109	120	38	4	5	3150	2.75
IV-HMV 12E	M 60x2	60.5	115	125	38	5	5	3300	2.8
IV-HMV 13E	M 65x2	65.5	121	130	38	5	5	3600	3
IV-HMV 14E	M 70x2	70.5	127	135	38	5	5	3800	3.2
IV-HMV 15E	M 75x2	75.5	132	140	38	5	5	4000	3.4
IV-HMV 16E	M 80x2	80.5	137	146	38	5	5	4200	3.7
IV-HMV 17E	M 85x2	85.5	142	150	38	5	5	4400	3.75
IV-HMV 18E	M 90x2	90.5	147	156	38	5	5	4700	4
IV-HMV 19E	M 95x2	95.5	153	162	38	5	5	4900	4.3
IV-HMV 20E	M 100x2	100.5	158	166	38	6	5	5100	4.4
IV-HMV 21E	M 105x2	105.5	163	172	38	6	5	5300	4.65
IV-HMV 22E	M 110x2	110.5	169	178	38	6	5	5600	4.95
IV-HMV 23E	M 115x2	115.5	174	182	38	6	5	5800	5
IV-HMV 24E	M 120x2	120.5	179	188	38	6	5	6000	5.25
IV-HMV 25E	M 125x2	125.5	184	192	38	6	5	6200	5.35
IV-HMV 26E	M 130x2	130.5	190	198	38	6	5	6400	5.65
IV-HMV 27E	M 135x2	135.5	195	204	38	6	5	6600	5.9
IV-HMV 28E	M 140x2	140.5	200	208	38	7	5	6800	6
IV-HMV 29E	M 145x2	145.5	206	214	39	7	5	7300	6.5
IV-HMV 30E	M 150x2	150.5	211	220	39	7	5	7500	6.6
IV-HMV 31E	M 155x3	155.5	218	226	39	7	5	8100	6.95
IV-HMV 32E	M 160x3	160.5	224	232	40	7	6	8600	7.6
IV-HMV 33E	M 165x3	165.5	229	238	40	7	6	8900	7.9
IV-HMV 34E	M 170x3	170.5	235	244	41	7	6	9400	8.4
IV-HMV 36E	M 180x3	180.5	247	256	41	7	6	10300	9.15
IV-HMV 38E	M 190x3	191	259	270	42	8	7	11500	10.5
IV-HMV 40E	M 200x3	201	271	282	43	8	8	12500	11.5
IV-HMV 41E	Tr 205x4	207	276	288	43	8	8	12800	12
IV-HMV 42E	Tr 210x4	212	282	294	44	8	9	13400	12.5
IV-HMV 43E	Tr 215x4	217	287	300	44	8	9	13700	13
IV-HMV 44E	Tr 220x4	222	293	306	44	8	9	14400	13.5
IV-HMV 45E	Tr 225x4	227	300	312	45	8	9	15200	14.5
IV-HMV 46E	Tr 230x4	232	305	318	45	8	9	15500	14.5
IV-HMV 47E	Tr 235x4	237	311	326	46	8	10	16200	16
IV-HMV 48E	Tr 240x4	242	316	330	46	9	10	16500	16
IV-HMV 50E	Tr 250x4	252	329	342	46	9	10	17600	17.5



型号 UNIT NO.	G 螺纹 Thread	d1 mm	d2 mm	主要尺寸Dimensions			允许活塞位移 Permitted piston displacement	活塞区域 Piston area	重量 WT (KG)
				d3 mm	B mm	B1 mm			
IV-HMV 52E	Tr 260x4	262	341	356	47	9	11	18 800	19
IV-HMV 54E	Tr 270x4	272	352	368	48	9	12	19 800	20.5
IV-HMV 56E	Tr 280x4	282	363	380	49	9	12	21 100	22
IV-HMV 58E	Tr 290x4	292	375	390	49	9	13	22 400	22.5
IV-HMV 60E	Tr 300x4	302	386	404	51	10	14	23 600	25.5
IV-HMV 62E	Tr 310x5	312	397	416	52	10	14	24 900	27
IV-HMV 64E	Tr 320x5	322	409	428	53	10	14	26 300	29.5
IV-HMV 66E	Tr 330x5	332	419	438	53	10	14	27 000	30
IV-HMV 68E	Tr 340x5	342	430	450	54	10	14	28 400	31.5
IV-HMV 69E	Tr 345x5	347	436	456	54	10	14	29 400	32.5
IV-HMV 70E	Tr 350x5	352	442	464	56	10	14	29 900	35
IV-HMV 72E	Tr 360x5	362	455	472	56	10	15	31 300	35.5
IV-HMV 73E	Tr 365x5	367	460	482	57	11	15	31 700	38.5
IV-HMV 74E	Tr 370x5	372	466	486	57	11	16	32 800	39
IV-HMV 76E	Tr 380x5	382	476	498	58	11	16	33 500	40.5
IV-HMV 77E	Tr 385x5	387	483	504	58	11	16	34 700	41
IV-HMV 80E	Tr 400x5	402	499	522	60	11	17	36 700	45.5
IV-HMV 82E	Tr 410x5	412	510	534	61	11	17	38 300	48
IV-HMV 84E	Tr 420x5	422	522	546	61	11	17	40 000	50
IV-HMV 86E	Tr 430x5	432	532	556	62	11	17	40 800	52.5
IV-HMV 88E	Tr 440x5	442	543	566	62	12	17	42 500	54
IV-HMV 90E	Tr 450x5	452	554	580	64	12	17	44 100	57.5
IV-HMV 92E	Tr 460x5	462	565	590	64	12	17	45 100	60
IV-HMV 94E	Tr 470x5	472	576	602	65	12	18	46 900	62
IV-HMV 96E	Tr 480x5	482	587	612	65	12	19	48 600	63
IV-HMV 98E	Tr 490x5	492	597	624	66	12	19	49 500	66
IV-HMV 100E	Tr 500x5	502	609	636	67	12	19	51 500	70
IV-HMV 102E	Tr 510x6	512	624	648	68	12	20	53 300	74
IV-HMV 104E	Tr 520x6	522	634	658	68	13	20	54 300	75
IV-HMV 106E	Tr 530x6	532	645	670	69	13	21	56 200	79
IV-HMV 108E	Tr 540x6	542	657	682	69	13	21	58 200	81
IV-HMV 110E	Tr 550x6	552	667	693	70	13	21	59 200	84
IV-HMV 112E	Tr 560x6	562	678	704	71	13	22	61 200	88
IV-HMV 114E	Tr 570x6	572	689	716	72	13	23	63 200	91
IV-HMV 116E	Tr 580x6	582	699	726	72	13	23	64 200	94
IV-HMV 120E	Tr 600x6	602	721	748	73	13	23	67 300	100
IV-HMV 126E	Tr 630x6	632	754	782	74	14	23	72 900	110
IV-HMV 130E	Tr 650x6	652	775	804	75	14	23	76 200	115
IV-HMV 134E	Tr 670x6	672	796	826	76	14	24	79 500	120
IV-HMV 138E	Tr 690x6	692	819	848	77	14	25	84 200	127
IV-HMV 142E	Tr 710x7	712	840	870	78	15	25	87 700	135
IV-HMV 150E	Tr 750x7	752	883	912	79	15	25	95 200	146
IV-HMV 160E	Tr 800x7	802	936	965	80	16	25	103 900	161
IV-HMV 170E	Tr 850x7	852	990	1020	83	16	26	114 600	181
IV-HMV 180E	Tr 900x7	902	1 043	1 075	86	17	30	124 100	205
IV-HMV 190E	Tr 950x8	952	1 097	1 126	86	17	30	135 700	218
IV-HMV 200E	Tr 1000x8	1 002	1 150	1 180	88	17	34	145 800	239

型号 Designation	G in	中径 in	每英寸螺纹牙数 Threads per inch	主要尺寸Dimensions					允许活塞位移 Permitted piston displacement	活塞区域 Piston area	重量 W.t (lb)
				d1 in	d2 in	d3 in	B in	B1 in			
IV-HMVC 10E	1.967	1.9309	18	2	4.1	4.5	1.5	0.16	0.2	4.5	6
IV-HMVC 11E	2.157	2.1209	18	2.2	4.3	4.7	1.5	0.16	0.2	4.9	6.1
IV-HMVC 12E	2.36	2.3239	18	2.4	4.5	4.9	1.5	0.2	0.2	5.1	6.2
IV-HMVC 13E	2.548	2.5119	18	2.6	4.8	5.1	1.5	0.2	0.2	5.6	6.6
IV-HMVC 14E	2.751	2.7149	18	2.8	5	5.3	1.5	0.2	0.2	5.9	7.1
IV-HMVC 15E	2.933	2.8789	12	3	5.2	5.5	1.5	0.2	0.2	6.2	7.5
IV-HMVC 16E	3.137	3.0829	12	3.2	5.4	5.7	1.5	0.2	0.2	6.5	8.2
IV-HMVC 17E	3.34	3.2859	12	3.4	5.6	5.9	1.5	0.2	0.2	6.8	8.3
IV-HMVC 18E	3.527	3.4729	12	3.6	5.8	6.1	1.5	0.2	0.2	7.3	8.8
IV-HMVC 19E	3.73	3.6759	12	3.8	6	6.4	1.5	0.2	0.2	7.6	9.5
IV-HMVC 20E	3.918	3.8639	12	4	6.2	6.5	1.5	0.24	0.2	7.9	9.7
IV-HMVC 21E	4.122	4.0679	12	4.2	6.4	6.8	1.5	0.24	0.2	8.2	10.3
IV-HMVC 22E	4.325	4.2709	12	4.4	6.7	7	1.5	0.24	0.2	8.7	10.9
IV-HMVC 24E	4.716	4.6619	12	4.7	7	7.4	1.5	0.24	0.2	9.3	11.6
IV-HMVC 26E	5.106	5.0519	12	5.1	7.5	7.8	1.5	0.24	0.2	9.9	12.5
IV-HMVC 28E	5.497	5.4429	12	5.5	7.9	8.2	1.5	0.28	0.2	10.5	13.2
IV-HMVC 30E	5.888	5.8339	12	5.9	8.3	8.7	1.5	0.28	0.2	11.6	14.6
IV-HMVC 32E	6.284	6.2028	8	6.3	8.8	9.1	1.6	0.28	0.24	13.3	16.8
IV-HMVC 34E	6.659	6.5778	8	6.7	9.3	9.6	1.6	0.28	0.24	14.6	18.5
IV-HMVC 36E	7.066	6.9848	8	7.1	9.7	10.1	1.6	0.28	0.24	16	20.2
IV-HMVC 38E	7.472	7.3908	8	7.5	10.2	10.6	1.7	0.31	0.28	17.8	23.1
IV-HMVC 40E	7.847	7.7658	8	7.9	10.7	11.1	1.7	0.31	0.31	19.4	25.4
IV-HMVC 44E	8.628	8.5468	8	8.7	11.5	12	1.7	0.31	0.35	22.3	29.8
IV-HMVC 48E	9.442	9.3337	6	9.5	12.4	13	1.8	0.35	0.39	25.6	35.3
IV-HMVC 52E	10.192	10.0837	6	10.3	13.4	14	1.9	0.35	0.43	29.1	41.9
IV-HMVC 54E	10.604	10.496	6	10.7	13.9	14.5	1.9	0.35	0.47	30.7	45.2
IV-HMVC 56E	11.004	10.8957	6	11.1	14.3	15	1.9	0.35	0.47	32.7	48.5
IV-HMVC 60E	11.785	11.6767	6	11.9	15.2	15.9	2	0.39	0.55	36.6	56.2
IV-HMVC 64E	12.562	12.4537	6	12.7	16.1	16.9	2.1	0.39	0.55	40.8	65
IV-HMVC 68E	13.339	13.219	5	13.5	16.9	17.7	2.1	0.39	0.55	44	69.4
IV-HMVC 72E	14.17	14.05	5	14.3	17.9	18.6	2.2	0.39	0.59	48.5	78.3
IV-HMVC 76E	14.957	14.837	5	15	18.7	19.6	2.3	0.43	0.63	51.9	89.3
IV-HMVC 80E	15.745	15.625	5	15.8	19.6	20.6	2.4	0.43	0.67	56.9	100
IV-HMVC 84E	16.532	16.412	5	16.6	20.6	21.5	2.4	0.43	0.67	62	110
IV-HMVC 88E	17.319	17.199	5	17.4	21.4	22.3	2.4	0.47	0.67	65.9	119
IV-HMVC 92E	18.107	17.987	5	18.2	22.2	23.3	2.5	0.47	0.67	69.9	132
IV-HMVC 96E	18.894	18.774	5	19	23.1	24.1	2.6	0.47	0.75	75.3	139
IV-HMVC 100E	19.682	19.562	5	19.8	24	25	2.6	0.47	0.75	79.8	154
IV-HMVC 106E	20.867	20.722	4	20.9	25.4	26.4	2.7	0.51	0.83	87.1	174
IV-HMVC 112E	22.048	21.903	4	22.1	26.7	27.7	2.8	0.51	0.87	94.9	194
IV-HMVC 120E	23.623	23.478	4	23.7	28.4	29.4	2.9	0.51	0.91	104.3	220
IV-HMVC 126E	24.804	24.659	4	24.9	29.7	30.8	2.9	0.55	0.91	113	243
IV-HMVC 134E	26.379	26.234	4	26.5	31.3	32.5	3	0.55	0.94	123.2	265
IV-HMVC 142E	27.961	27.774	3	28	33.1	34.3	3.1	0.59	0.98	135.9	298
IV-HMVC 150E	29.536	29.349	3	29.6	34.8	35.9	3.1	0.59	0.98	147.6	322
IV-HMVC 160E	31.504	31.317	3	31.6	36.9	38	3.1	0.63	0.98	161	355
IV-HMVC 170E	33.473	33.286	3	33.5	39	40.2	3.3	0.63	1.02	177.6	399
IV-HMVC 180E	35.441	35.254	3	35.5	41.1	42.3	3.4	0.67	1.18	192.4	452
IV-HMVC 190E	37.41	37.223	3	37.5	43.2	44.3	3.4	0.67	1.18	210.3	481

精密螺母 Precision Locknut



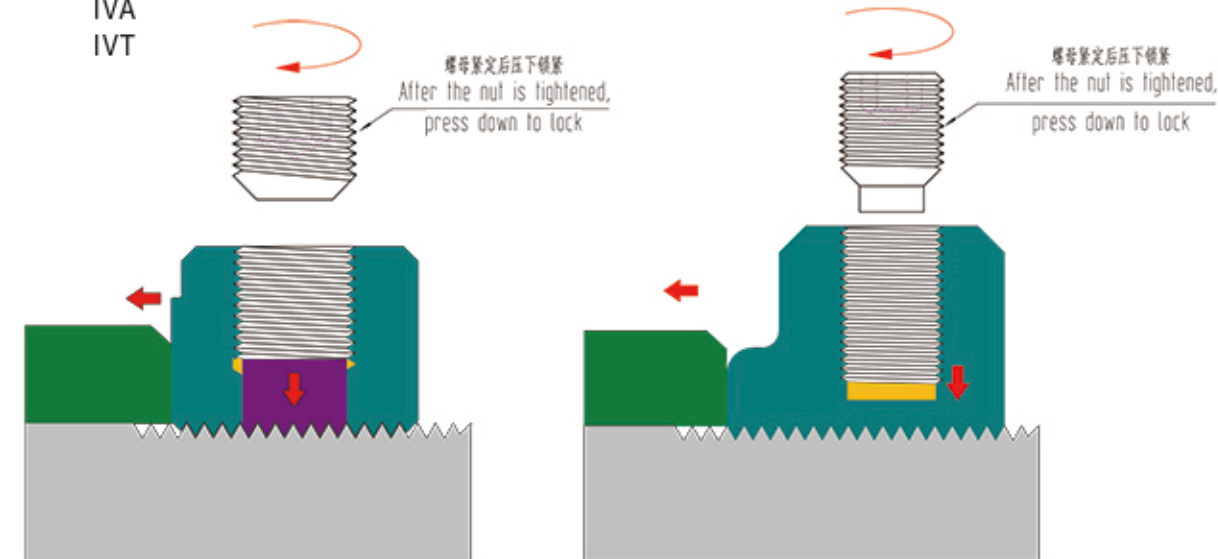
一般锁紧螺母工作原理是采用螺母和螺栓之间的摩擦进行自锁。但是在动载荷情况下这种自锁就会降低，这样就需要采取一些防松动措施，保证螺母的可靠性。带有锁定销精密螺母在螺纹精度等级和材质上比一般锁紧螺母要求要高，其防松方式是通过一装置减小螺母螺纹与轴螺纹间隙产生足够摩擦力而达到止退目的。

精密锁紧螺母主要使用于高转速主轴、丝杠等精密机械部件上。

Working principle of the lock nut is to use the friction between the nut and the bolt for self-locking. However, in the case of dynamic load, this self-locking will be reduced, so it is necessary to take some anti-loosening measures to ensure the reliability of the nut. Precision locknut with locking pin is higher than the general locking nut in terms of thread accuracy grade and material. The anti-loosening method is to reduce the gap between the nut thread and the shaft thread through a device to generate enough friction to achieve the purpose of preventing backlash.

Precision locknuts are mainly used on high-speed spindles, lead screws and other precision mechanical parts.

代号(Code): KMT
IVA
IVT



螺纹精度 (Thread): 公制螺纹 (Metric) 5H

定位面/螺纹最大轴向跳动0.005mm Max axial runout of locating surface/thread 0.05mm

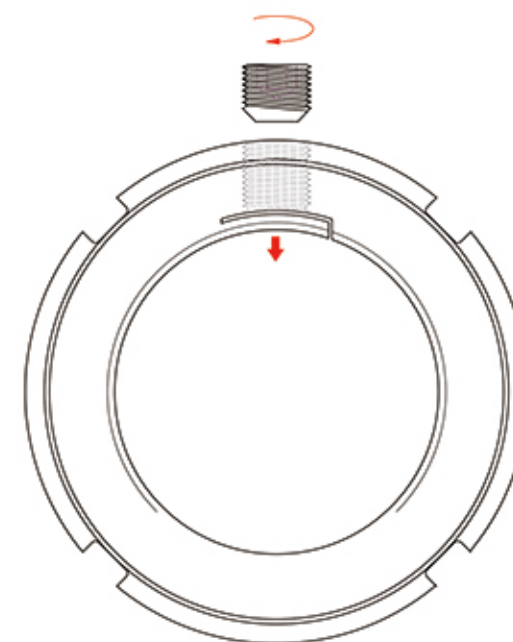
(可根据要求定制) Can be customized according to demand

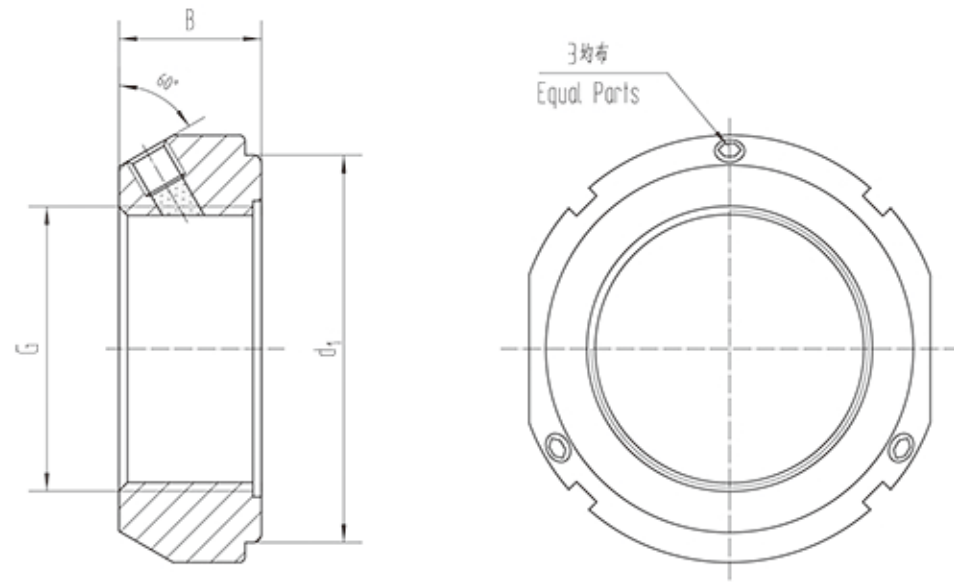
配合螺纹精度 (建议): 公制M螺纹 (Metric M thread): 6g

公制梯形螺纹 (Metric trapezoidal thread): 7e

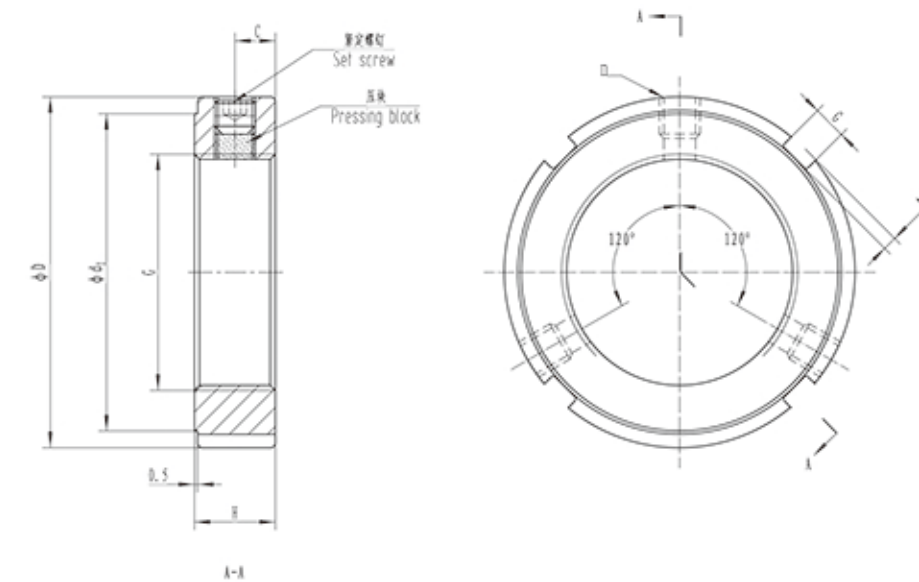
其他止退方式请咨询艾威传动。

Other preventing method please consult with IVY POWER.

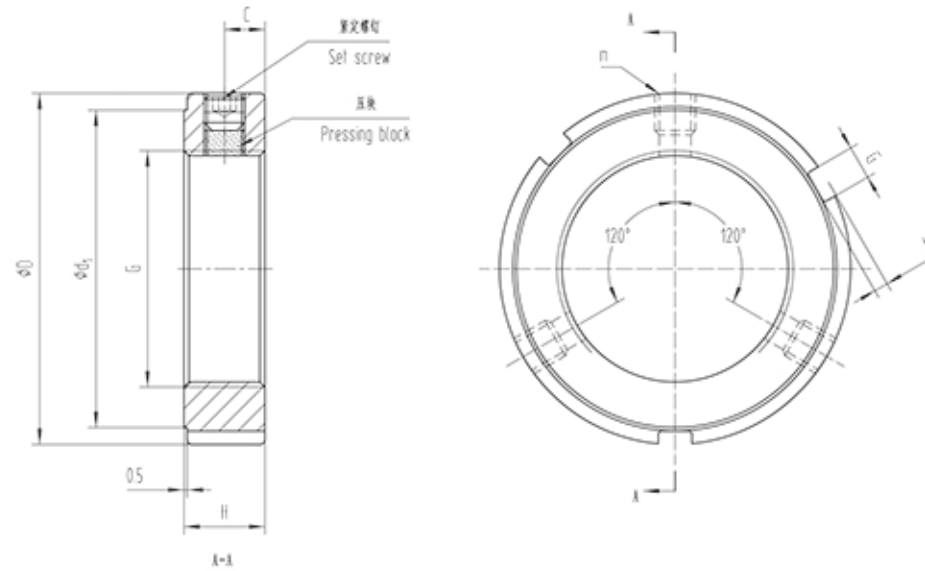




型号 UNIT NO.	主要尺寸Dimensions			轴向承载能力 Axial load capacity	锁紧螺丝 Lock screw	锁紧扭矩 N · m
	d1 mm	B mm	G mm			
KMT08	59	22	M40×1.5	210	M8	18
KMT09	64	22	M45×1.5	240	M8	18
KMT10	68	25	M50×1.5	300	M8	18
KMT11	78	25	M55×2	340	M8	18
KMT12	82	26	M60×2	380	M8	18
KMT13	87	28	M65×2	460	M8	18
KMT14	92	28	M70×2	490	M8	18
KMT15	97	28	M75×2	520	M8	18
KMT16	100	32	M80×2	620	M8	18
KMT17	110	32	M85×2	650	M10	35
KMT18	115	32	M90×2	680	M10	35
KMT19	120	32	M95×2	710	M10	35
KMT20	125	32	M100×2	740	M10	35
KMT22	134	32	M110×2	800	M10	35
KMT24	144	32	M120×2	860	M10	35
KMT26	154	32	M130×2	920	M10	35
KMT28	164	32	M140×2	980	M10	35
KMT30	174	32	M150×2	1040	M10	35
KMT32	184	32	M160×3	1100	M10	35
KMT34	192	32	M170×3	1160	M10	35
KMT36	204	32	M180×3	1220	M10	35
KMT38	214	32	M190×3	1280	M10	35
KMT40	224	32	M200×3	1340	M10	35



型号 UNIT NO.	主要尺寸Dimensions				d1 mm	紧固螺栓 Bolt fastener		质量 W.t
	D mm	H mm	g mm	t mm		n-m	N.m	
IVA M8x0.75	16	8	3	2	11	2-M4	3.5	4
IVA M10x0.75	18	8	3	2	13	2-M4	3.5	8
IVA M10x1	18	8	3	2	13	2-M4	3.5	8
IVA M12x1	22	8	3	2	16	2-M4	3.5	14
IVA M15x1	25	8	3	2	20	2-M4	3.5	18
IVA M17x1	28	10	4	2	23	2-M5	4.5	28
IVA M20x1	32	10	4	2	26	3-M5	4.5	34
IVA M22x1	38	10	4	3	27	3-M4	3.5	52
IVA M25x1.5	38	12	5	2	32	3-M6	8.0	58
IVA M30x1.5	45	12	5	2	39	3-M6	8.0	78
IVA M35x1.5	52	12	5	2	46	3-M6	8.0	104
IVA M40x1.5	58	14	6	2.5	51	3-M6	8.0	148
IVA M45x1.5	65	14	6	2.5	58	3-M6	8.0	184
IVA M50x1.5	70	14	6	2.5	63	3-M6	8.0	200
IVA M55x2	75	16	7	3	67	3-M8	18.0	246
IVA M60x2	80	16	7	3	72	3-M8	18.0	270
IVA M65x2	85	16	7	3	77	3-M8	18.0	290
IVA M70x2	92	18	8	3.5	83	3-M8	18.0	398
IVA M75x2	98	18	8	3.5	89	3-M8	18.0	434
IVA M80x2	105	18	8	3.5	96	3-M8	18.0	504
IVA M85x2	110	18	8	3.5	101	3-M8	18.0	532
IVA M90x2	120	20	10	4	108	3-M8	18.0	762
IVA M95x2	125	20	10	4	113	3-M8	18.0	796
IVA M100x2	130	20	10	4	118	3-M8	18.0	836
IVA M105x2	140	22	12	5	125	3-M8	18.0	1130
IVA M110x2	145	22	12	5	132	3-M8	18.0	1172
IVA M115x2	150	22	12	5	137	3-M8	18.0	1270
IVA M120x2	155	24	12	5	142	3-M8	18.0	1390
IVA M125x2	160	24	12	5	147	3-M8	18.0	1450
IVA M130x2	165	24	12	5	152	3-M8	18.0	1500
IVA M135x2	175	26	14	6	160	3-M10	35.0	1930
IVA M140x2	180	26	14	6	165	3-M10	35.0	1950
IVA M145x2	190	26	14	6	175	3-M10	35.0	2380
IVA M150x2	195	26	14	6	180	3-M10	35.0	2440
IVA M155x3	200	28	16	7	180	3-M10	35.0	2760
IVA M160x3	210	28	16	7	190	3-M10	35.0	3160
IVA M165x3	210	28	16	7	190	3-M10	35.0	3300
IVA M170x3	220	28	16	7	200	3-M10	35.0	3315
IVA M180x3	230	30	18	8	205	3-M12	60.0	3690
IVA M190x3	240	30	18	8	215	3-M12	60.0	3880
IVA M200x3	250	32	18	8	225	3-M12	60.0	4370



型号 UNIT NO.	主要尺寸Dimensions						紧固螺栓 Bolt fastener		质量 g
	D mm	H mm	g mm	t mm	d1 mm	C mm	m	N.m	
IVT M10x1	18	8	3	2	13	4	M4	3.5	10
IVT M12x1	22	8	3	2	16	4	M4	3.5	14
IVT M15x1	25	8	3	2	20	4	M4	3.5	16
IVT M17x1	28	10	4	2	23	5	M5	4.5	24
IVT M20x1	32	10	4	2	26	5	M5	4.5	34
IVT M25x1.5	38	12	5	2	32	6	M6	8.0	54
IVT M30x1.5	45	12	5	2	39	6	M6	8.0	76
IVT M35x1.5	52	12	5	2	46	6	M6	8.0	102
IVT M40x1.5	58	14	6	2.5	51	7	M6	8.0	144
IVT M45x1.5	65	14	6	2.5	58	7	M6	8.0	180
IVT M50x1.5	70	14	6	2.5	63	7	M6	8.0	196
IVT M55x2	75	16	7	3	67	8	M8	18.0	240
IVT M60x2	80	16	7	3	72	8	M8	18.0	262
IVT M65x2	85	16	7	3	77	8	M8	18.0	282
IVT M70x2	92	18	8	3.5	83	9	M8	18.0	378
IVT M75x2	98	18	8	3.5	89	9	M8	18.0	422
IVT M80x2	105	18	8	3.5	96	9	M8	18.0	492
IVT M85x2	110	18	8	3.5	101	9	M8	18.0	524
IVT M90x2	120	20	10	4	108	10	M8	18.0	750
IVT M95x2	125	20	10	4	113	10	M8	18.0	782
IVT M100x2	130	20	10	4	118	10	M8	18.0	826
IVT M105x2	140	22	12	5	125	11	M8	18.0	1108
IVT M110x2	145	22	12	5	132	11	M8	18.0	1164
IVT M120x2	155	24	12	5	142	12	M8	18.0	1378
IVT M130x2	165	24	12	5	152	12	M8	18.0	1480
IVT M140x2	180	26	14	6	165	13	M10	35.0	1958
IVT M150x2	195	26	14	6	180	13	M10	35.0	2404
IVT M160x3	210	28	16	7	190	14	M10	35.0	3080
IVT M170x3	220	28	16	7	200	14	M10	35.0	3256
IVT M180x3	230	30	18	8	205	15	M12	60.0	3628
IVT M190x3	240	30	18	8	215	15	M12	60.0	3928
IVT M200x3	250	32	18	8	225	16	M12	60.0	4330

胀紧联接套 Keyless Locking Devices



胀紧联接套(简称“胀套”)是一种无键联结装置，其原理是通过高强度螺栓改变内环与轴之间、外环与轮毂之间产生巨大抱紧力从而实现无键连接。

胀套不同于过盈联结件需要加热、冷却设备，只需按要求力矩拧紧螺钉即可，同时也可用来联结焊接性差的零件。

胀套超载时，将失去联结作用，可以保护设备不受损坏。其连接结构多种式样，可以多个串联使用。

Keyless Locking Devices is a keyless connection device. The principle is to change the huge holding force between the inner ring and the shaft and between the outer ring and the hub through high-strength bolts to achieve keyless connection.

Keyless Locking Devices is different from the interference coupling, which requires heating and cooling equipment. It only needs to tighten the screws according to the required torque. At the same time, it can also be used to connect parts with poor weldability.

When the devices is overloaded, it will lose its connection, which can protect the equipment from damage. Its connection structure has various styles and can be used in series.

代号 (Code) : JB 7934 ZX □*□

Z 型式代号Form Code

X 胀紧套顺序号Serial No. of Sleeve

□*□ 内径*外径ID*OD

代号 (Code) : GB/T 28701 ZJX □*□

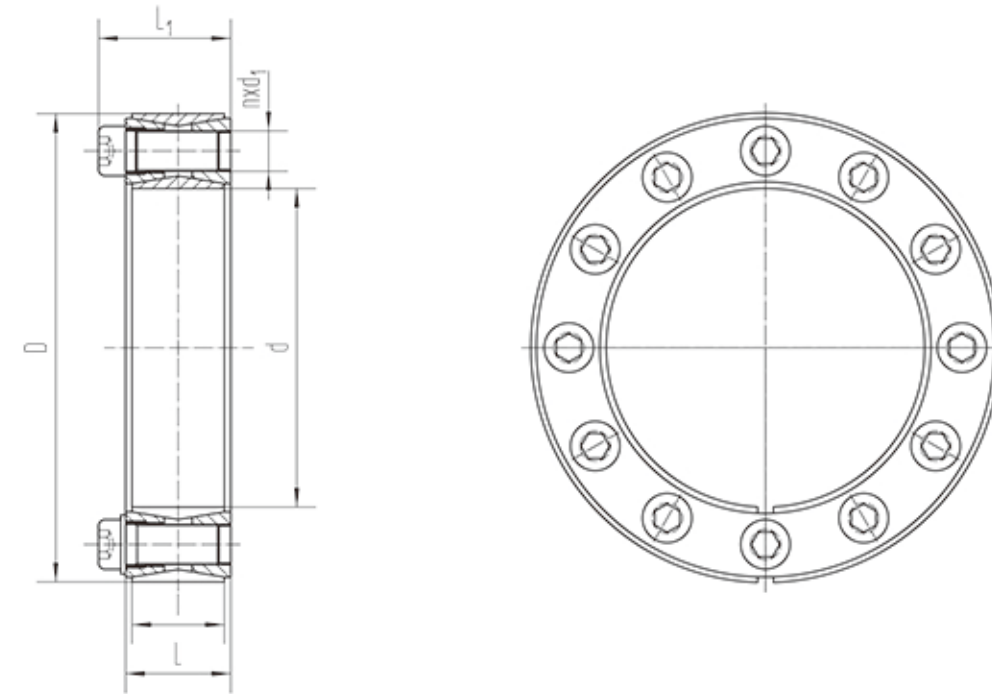
ZJ 型式代号Form Code

X 胀紧套顺序号Serial No. of Sleeve

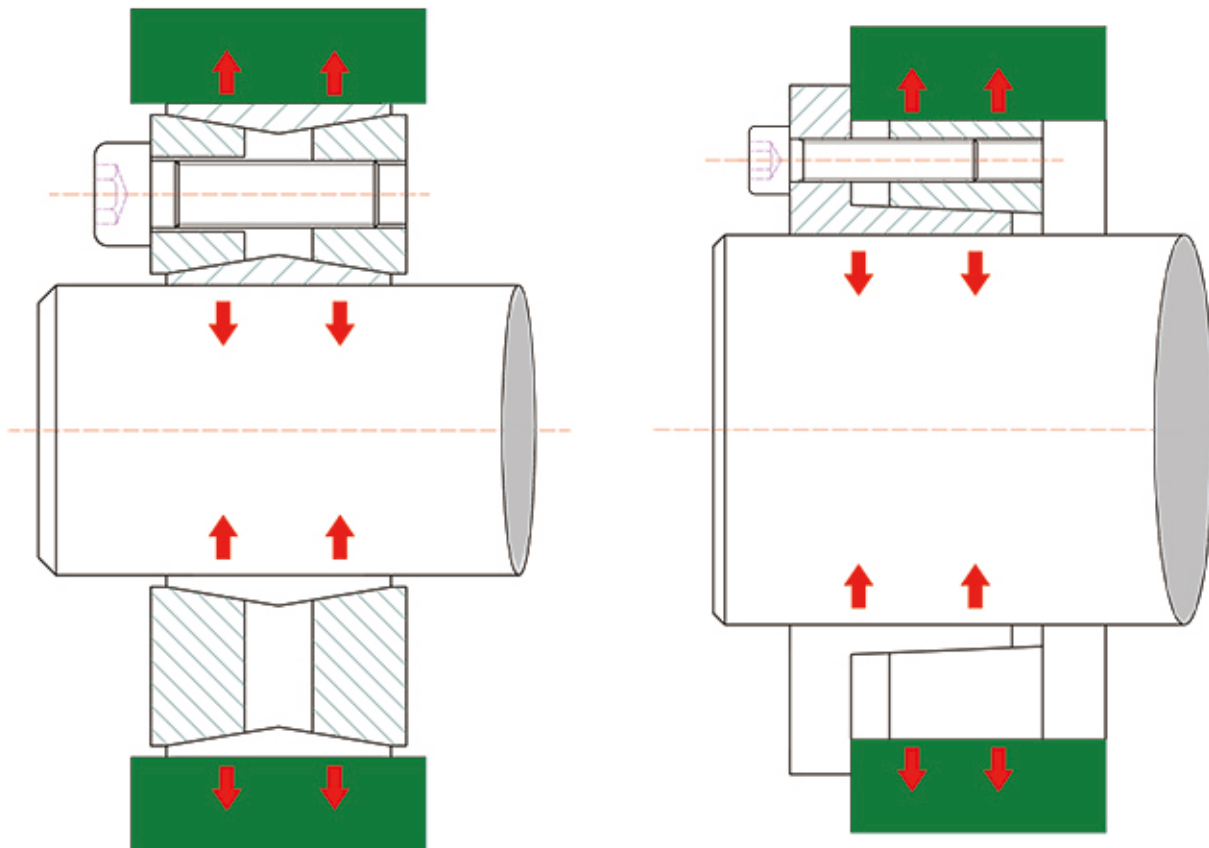
□*□ 内径*外径ID*OD

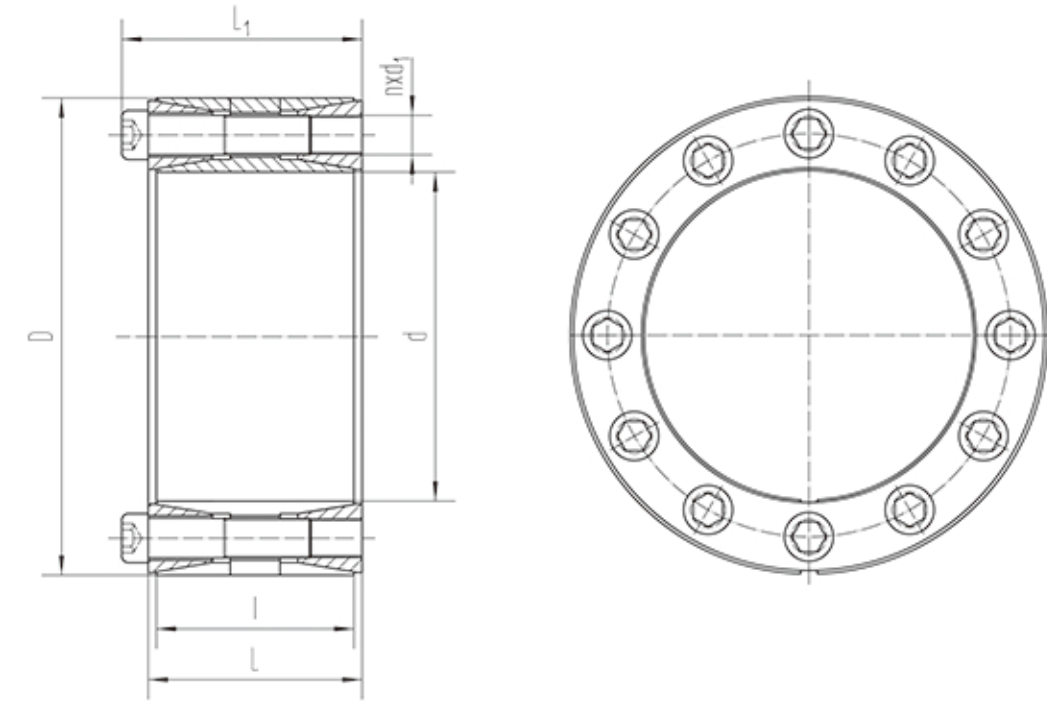
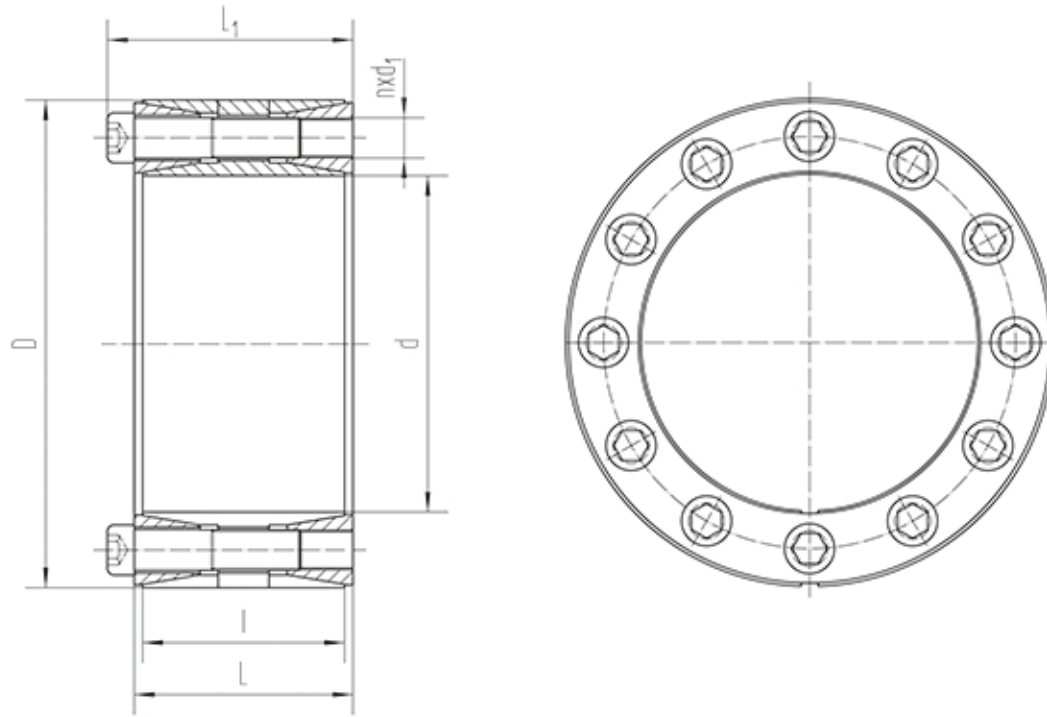
示例 (Eg) : Z2 200*260 内径φ200 外径φ260的Z2胀紧套

标准胀套一共有19种型式, 艾威传动本参数系列只体现部分常用规格, 额外规格请咨询艾威传动。
Total 19 types of standard keyless locking devices. This parameter series of IVY POWER only reflects some common specifications. For additional specifications, please consult with IVY POWER.



Z2系列 Series												
主要尺寸 Dimensions					内六角螺钉 Hexagon socket head cap screws		额定负荷 Rated burden		胀套与轴结 合面上的压 力pf	胀套与轮毂 结合面上的 压力pf ¹	螺钉的拧 紧力矩 MA	重量 W.t Kg
d mm	D mm	l mm	L mm	L1 mm	d1 mm	n	轴向力Ft KN	转矩Mt KN·m	N/mm ²	N/mm ²	N·m	
200	260	46	52	68	M14	30	525	52.5	150	115	190	8.65
210	275	50	56	74	M16	24	599	62.89	151	115	295	10.1
220	285	50	56	74	M16	26	620	68	150	115	295	11.22
240	305	50	56	74	M16	30	715	85.5	160	125	295	12.2
250	315	50	56	74	M16	32	768	96	162	125	295	12.7
260	325	50	56	74	M16	34	800	104	165	130	295	13.2
280	355	60	66	86.5	M18	32	915	128	145	115	405	19.2
300	375	60	66	86.5	M18	36	1020	153	150	120	405	20.5
320	405	72	78	100.5	M20	36	1310	210	150	120	580	29.6
340	425	72	78	100.5	M20	36	1310	224	145	115	580	31.1
360	455	84	90	116	M22	36	1630	294	145	115	780	42.2
380	475	84	90	116	M22	36	1620	308	135	110	780	44
400	495	84	90	116	M22	36	1610	322	130	105	780	46
420	515	84	90	116	M22	40	1780	374	135	110	780	50
450	555	96	102	130	M24	40	2050	461.25	124	100	1000	65
480	585	96	102	130	M24	42	2160	518.4	124	100	1000	71
500	605	96	102	130	M24	44	2240	560	123	100	1000	72.6
530	640	96	102	130	M24	45	2330	617	121	100	1000	83.6
560	670	96	102	130	M24	48	2440	680	120	100	1000	85
600	710	96	102	130	M24	50	2580	775	118	100	1000	91
630	740	96	102	130	M24	52	2680	844	117	105	1000	94
670	780	96	102	130	M24	56	2820	944	116	100	1000	101
710	820	96	102	130	M24	60	2970	1054	115	100	1000	106
750	860	96	102	130	M24	62	3130	1173	115	100	1000	112
800	910	96	102	130	M24	66	3260	1300	112	100	1000	118
850	960	96	102	130	M24	70	3500	1487	113	100	1000	125
900	1010	96	102	130	M24	75	3680	1650	112	100	1000	132
950	1060	96	102	130	M24	80	3870	1838	112	100	1000	139
1000	1110	96	102	130	M24	82	4000	2000	110	100	1000	146



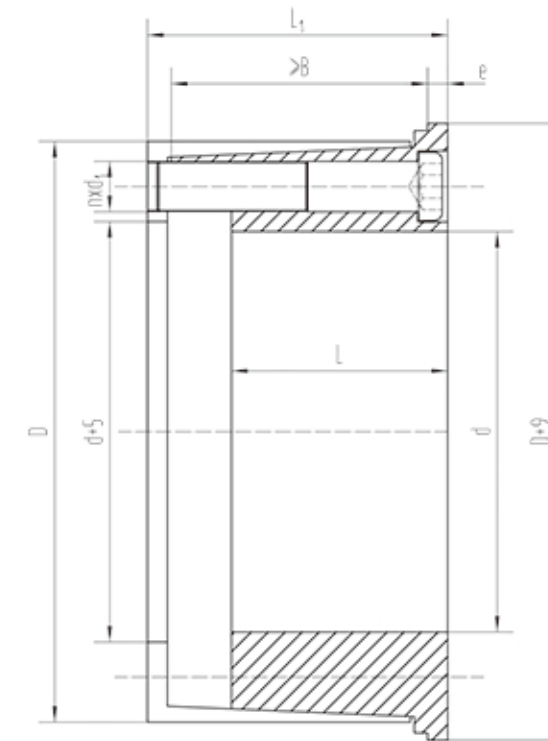
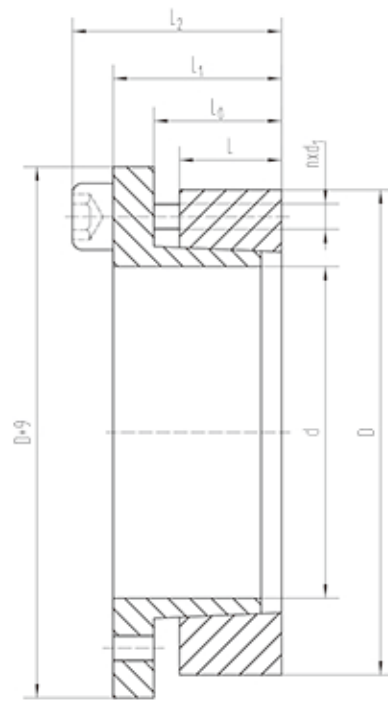


Z4系列Series

主要尺寸 Dimensions					内六角螺钉 Hexagon socket head cap screws		额定负荷 Rated burden		胀套与轴结 合面上的压 力pf	胀套与轮毂 结合面上的 压力pf'	螺钉的拧 紧力矩 MA	重量 W.t Kg
d mm	D mm	l mm	L mm	L1 mm	d1 mm	n	轴向力Ft KN	转矩Mt KN·m	N/mm ²	N/mm ²	N·m	
100	160	74	80	94	M14	15	389	19.7	213	133	230	7.2
110	170	74	80	94	M14	15	483	22.6	242	157	230	7.7
120	180	74	80	94	M14	15	482	28.9	222	148	230	8.3
125	185	74	80	94	M14	15	480	30	212	143	230	8.5
130	190	74	80	94	M14	15	480	31.2	205	140	230	8.8
140	200	74	80	94	M14	18	574	40.2	227	159	230	9.3
150	210	74	80	94	M16	18	572	42.9	212	152	230	10
160	230	88	94	110	M16	18	800	64	227	158	355	14.9
170	240	88	94	110	M16	18	795	67.8	214	152	355	15.7
180	250	88	94	110	M16	21	923	83	235	170	355	16.4
190	260	88	94	110	M16	21	921	88	223	163	355	17.2
200	270	88	94	110	M16	24	1050	105	242	179	355	18.8
210	290	110	116	134	M18	20	1118	117.3	197	143	485	23
220	300	110	116	134	M18	21	1120	123	189	138	485	27.7
240	320	110	116	134	M18	24	1280	153	198	148	485	29.8
250	330	110	116	134	M18	27	1282	160.2	205	157	485	31
260	340	110	116	134	M18	27	1430	186	205	157	485	32
280	370	130	136	156	M20	24	1650	230	192	145	690	46
300	390	130	136	156	M20	24	1650	245	179	138	690	49

Z5系列Series

主要尺寸 Dimensions					内六角螺钉 Hexagon socket head cap screws		额定负荷 Rated burden		胀套与轴结 合面上的压 力pf	胀套与轮毂 结合面上的 压力pf'	螺钉的拧 紧力矩 MA	重量 W.t Kg
d mm	D mm	l mm	L mm	L1 mm	d1 mm	n	轴向力Ft KN	转矩Mt KN·m	N/mm ²	N/mm ²	N·m	
100	145	60	65	77	M12	10	288	14.4	193	132	145	4.1
110	155	60	65	77	M12	10	288	15.8	214	123	145	4.4
120	165	60	65	77	M12	12	346	20.8	200	139	145	4.8
130	180	68	74	86	M12	15	433	28.1	219	139	145	6.5
140	190	68	74	86	M12	18	519	36.3	215	157	145	7
150	200	68	74	86	M12	18	519	39	203	150	145	7.4
160	210	68	74	86	M12	21	606	48.5	178	167	145	7.8
170	225	75	81	95	M14	18	712	60.6	203	162	230	10
180	235	75	81	95	M14	18	712	64.1	187	155	230	10.6
190	250	88	94	108	M14	20	792	75.2	183	135	230	14.3
200	260	88	94	108	M14	24	950	95	222	156	230	15
210	275	98	104	120	M16	18	970	102	215	142	355	17.5
220	285	98	104	120	M16	18	990	109	215	141	355	19.8
240	305	98	104	120	M16	24	1318	158	222	176	355	21.4
250	315	98	104	120	M16	24	1340	167.5	215	170	355	22
260	325	98	104	120	M16	25	1370	178	215	172	355	23
280	355	120	126	144	M18	24	1590	222.5	188	149	485	35.2
300	375	120	126	144	M18	25	1650	248	183	146	485	37.4
320	405	135	142	162	M20	25	2140	344	192	152	690	51.3
340	425	135	142	162	M20	25	2140	365	181	144	690	54.1
360	455	158	165	187	M22	25	2670	480	176	139	930	75.4
380	475	158	165	187	M22	25	2670	508	166	133	930	79
400	495	158	165	187	M22	25	2670	535	158	128	930	82.8
420	515	158	165	187	M22	30	3200	673	181	147	930	86.5
450	555	172	180	204	M24	30	3700	832.5	175	142	1200	112
480	585	172	180	204	M24	32	3950	948	175	143	1200	119
500	605	172	180	204	M24	32	3950	988	168	139	1200	123
530	640	190	200	227	M27	30	4320	1145	157	130	1600	151
560	670	190	200	227	M27	30	4320	1210	148	124	1600	160
600	710	190	200	227	M27	32	4610	1380	147	124	1600	170

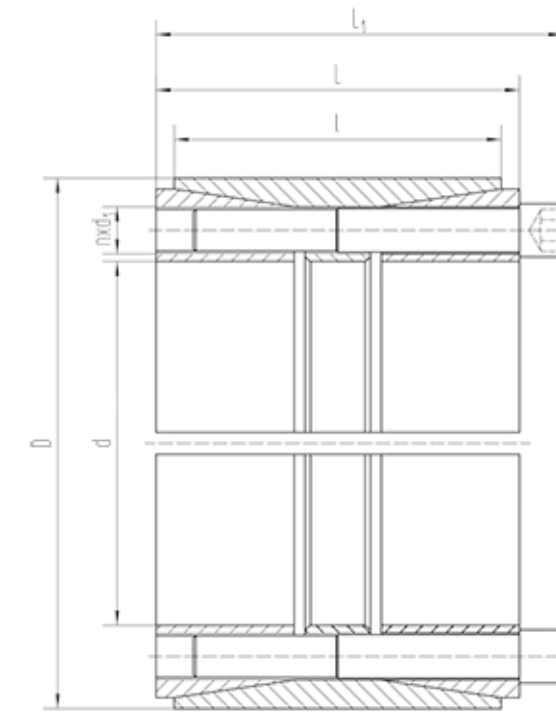
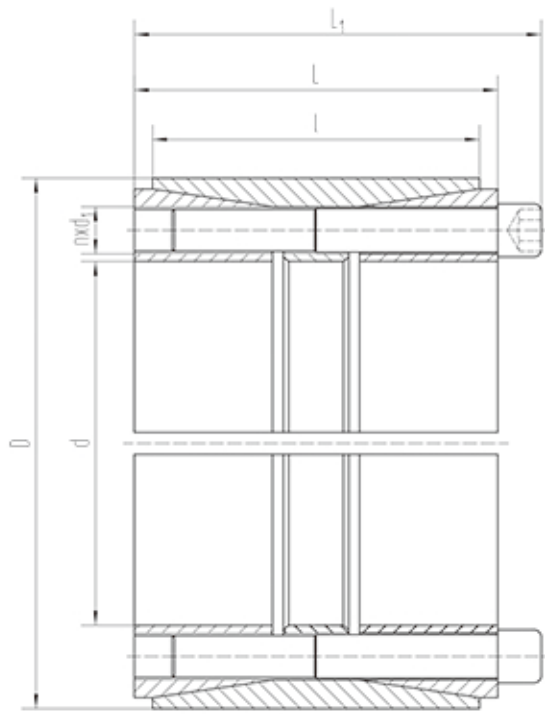


Z8系列Series

主要尺寸 Dimensions						内六角螺钉 Hexagon socket head cap screws		额定负荷 Rated burden		胀套与轴结 合面上的压 力pf	胀套与轮毂 结合面上的 压力pf ¹	螺钉的拧 紧力矩 MA	重量 W.t Kg
d	D	L	L0	L1	L2	d1	n	轴向力Ft KN	转矩Mt KN·m	N/mm ²	N/mm ²	N·m	
100	145	26	32	44	56	M12×30	8	205	10.3	210	145	145	2.6
110	155	26	32	44	56	M12×30	8	205	11.25	190	135	145	2.8
120	165	26	32	44	56	M12×30	9	231	13.9	210	145	145	3
130	180	34	40	52	64	M12×30	12	308	20	180	140	145	4.6
140	190	34	40	54	68	M14×40	9	317	22.25	190	130	230	4.9
150	200	34	40	54	68	M14×40	10	352	26.3	190	140	230	5.2
160	210	34	40	54	68	M14×40	11	287	31	150	145	230	5.5
170	225	44	50	64	78	M14×40	12	422	35.9	145	115	230	7.75
180	235	44	50	64	78	M14×40	12	422	38	170	110	230	8.15
190	250	44	50	64	78	M14×40	15	528	50.1	160	130	230	9.5
200	260	44	50	64	78	M14×40	15	528	52.8	160	125	230	9.9
220	285	50	56	72	88	M16×40	12	587	64.5	145	110	355	13.4
240	305	50	56	72	88	M16×40	15	734	88	165	130	355	14.3
260	325	50	56	72	88	M16×40	18	880	114	180	145	355	15.5
280	355	60	66	84	102	M18×50	16	948	132	150	120	485	22.9
300	375	60	66	84	102	M18×50	18	1059	159	160	125	485	24.4
320	405	74	81	101	121	M20×50	18	1374	220	150	120	690	36.1
340	425	74	81	101	121	M20×50	21	1603	272.5	175	135	690	38.4
360	455	86	94	116	138	M22×60	18	1710	308	140	110	930	46.2
380	475	86	94	116	138	M22×60	21	1995	379	155	125	930	55
400	495	86	94	116	138	M22×60	21	1995	399	150	120	930	61

Z9系列Series

主要尺寸 Dimensions						内六角螺钉 Hexagon socket head cap screws		额定负荷 Rated burden		胀套与轴结 合面上的压 力pf	胀套与轮毂 结合面上的 压力pf ¹	螺钉的拧 紧力矩 MA	重量 W.t Kg
d	D	L	L1	e	B	d1	n	轴向力Ft KN	转矩Mt KN·m	N/mm ²	N/mm ²	N·m	
100	145	54	75	5	65	M12×60	8	192	9.6	102	70	145	4.7
110	155	54	75	5	65	M12×60	8	191	10.5	93	66	145	5.1
120	165	54	75	5	65	M12×60	9	216	13	96	70	145	5.5
130	180	63	84	6	72	M12×70	12	287	17.8	100	78	145	7.5
140	190	63	84	6	72	M12×70	12	287	20.2	94	69	145	7.9
150	200	63	84	6	72	M12×70	12	287	21.6	88	66	145	8.4
160	210	63	84	6	72	M12×70	15	360	28.8	101	77	145	8.9
170	225	63	84	6	72	M12×70	16	383	32.6	101	76	145	10.5
180	235	63	84	6	72	M12×70	18	431	38.8	108	82	145	11
190	250	69	94	6	81	M14×75	15	493	46.8	106	80	230	4.3
200	260	69	94	6	125	M14×75	16	526	52.8	100	77	230	15
220	285	69	94	6	140	M16×75	14	640	70	119	92	355	17.8
240	305	86	112	7	140	M16×90	16	731	88	96	75	355	23.2
260	325	86	112	7	140	M16×90	18	822	107	103	82	355	24.8
280	355	94	120	8	140	M16×100	20	910	128	96	75	355	33
300	375	94	120	8	140	M16×100	22	1000	151	99	79	355	36
320	405	109	142	8	140	M20×120	18	1280	206	101	80	690	52
340	425	109	142	8	140	M20×121	20	1420	242	106	85	690	54
360	455	120	159	8	140	M20×130	20	1770	319	113	89	930	72
380	475	120	159	8	140	M20×130	20	1770	337	109	87	930	75
400	485	120	159	8	140	M20×130	20	1770	355	101	83	930	78
420	515	120	159	8	140	M20×130	22	1980	410	107	87	930	82

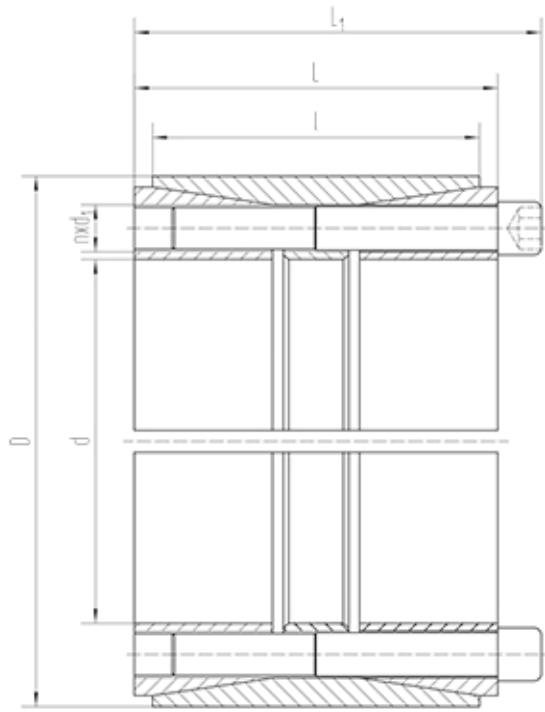


Z12A系列Series

主要尺寸 Dimintions					内六角螺钉 Hexagon socket head cap screws		额定负荷 Rated burden		胀套与轴结 合面上的压 力pf	胀套与轮毂 结合面上的 压力pf ^l	螺钉的拧 紧力矩 MA	重量 W.t Kg
d mm	D mm	l mm	L mm	L1 mm	d1 mm	n	轴向力Ft KN	转矩Mt KN·m	N/mm ²	N/mm ²	N·m	
200	260	134	146	162	M16	22	1437.5	143.7	172	112	355	24.9
220	285	134	146	162	M16	24	1581.8	174	172	115	355	29.6
240	305	134	146	162	M16	26	1725	207	172	119	355	31.9
260	325	134	146	162	M16	28	1846	240	170	117	355	34.3
280	355	165	177	197	M20	24	2428.5	340	168	117	690	52
300	375	165	177	197	M20	25	2540	381	161	123	690	55.3
320	405	165	177	197	M20	28	2881	461	175	119	690	67.3
340	425	165	177	197	M20	29	2994	509	171	119	690	71
360	455	190	202	224	M22	28	3588.8	646	169	115	930	96.5
380	475	190	202	224	M22	30	3821	726	170	115	930	101.2
400	495	190	202	224	M22	31	3960	792	168	120	930	106
420	515	190	202	224	M22	32	4100	861	165	116	930	110.7
440	535	190	202	224	M22	24	4260	937	165	112	930	110
460	555	190	202	224	M22	24	4260	980	158	107	930	113
480	575	190	202	224	M22	28	5000	1200	176	121	930	118
500	595	190	202	224	M22	28	5000	1240	169	117	930	122
520	615	190	202	224	M22	30	5330	1390	174	121	930	126
540	635	190	202	224	M22	30	5330	1440	168	117	930	131
560	655	190	202	224	M22	32	5680	1590	172	121	930	135
580	675	190	202	224	M22	33	5860	1705	172	121	930	140
600	695	190	202	224	M22	33	5860	1760	166	118	930	144

Z12B系列Series

主要尺寸 Dimintions					内六角螺钉 Hexagon socket head cap screws		额定负荷 Rated burden		胀套与轴结 合面上的压 力pf	胀套与轮毂 结合面上的 压力pf ^l	螺钉的拧 紧力矩 MA	重量 W.t Kg
d mm	D mm	l mm	L mm	L1 mm	d1 mm	n	轴向力Ft KN	转矩Mt KN·m	N/mm ²	N/mm ²	N·m	
200	260	88	102	116	M14	20	1020	102	194	124	230	15.3
220	285	96	108	124	M16	15	1060	117	174	113	355	20.2
240	305	96	108	124	M16	20	1410	170	212	140	355	21.8
260	325	96	108	124	M16	21	1480	193	205	138	355	23.4
280	355	96	110	130	M20	15	1650	232	213	141	690	30
300	375	96	110	130	M20	15	1650	249	198	134	690	31.2
320	405	124	136	156	M20	20	2210	354	191	125	690	48
340	425	124	136	156	M20	20	2210	376	180	119	690	51
360	455	140	155	177	M22	20	2750	496	185	118	930	69
380	475	140	155	177	M22	20	2750	524	175	113	930	73
400	495	140	155	177	M22	22	3010	602	183	122	930	76
420	515	140	155	177	M22	24	3300	694	190	127	930	80
440	535	140	155	177	M22	24	3300	728	166	123	930	81
460	555	140	155	177	M22	24	3300	760	159	118	930	85
480	575	140	155	177	M22	25	3440	830	159	119	930	88
500	595	140	155	177	M22	25	3440	861	153	115	930	91
520	615	140	155	177	M22	28	3850	1003	164	124	930	95
540	635	140	155	177	M22	28	3850	1042	158	120	930	98
560	655	140	155	177	M22	30	4130	1157	163	125	930	101
580	675	140	155	177	M22	30	4130	1199	158	121	930	104
600	695	140	155	177	M22	30	4130	1240	153	118	930	108



Z12C系列Series

主要尺寸 Dimensions					内六角螺钉 Hexagon socket head cap screws		额定负荷 Rated burden		胀套与轴结 合面上的压 力pf	胀套与轮毂 结合面上的 压力pf ¹	螺钉的拧 紧力矩 MA	重量 W.t Kg
d mm	D mm	l mm	L mm	L1 mm	d1 mm	n	轴向力Ft KN	转矩Mt KN·m	N/mm ²	N/mm ²	N·m	
200	260	88	102	116	M14	18	484	48.45	92	59	108	15.3
220	285	96	108	124	M16	15	505	55.57	83	54	168	20.2
240	305	96	108	124	M16	20	673	80.75	100	67	168	21.8
260	325	96	108	124	M16	21	705	91.67	97	66	168	23.4
280	355	96	110	130	M20	15	877	122.8	114	75	369	30
300	375	96	110	130	M20	15	887	133	106	72	369	31.2
320	405	124	136	156	M20	20	1181	189	102	67	369	48
340	425	124	136	156	M20	20	1181	200.8	96	64	369	51
360	455	140	155	177	M22	20	1455	262	98	62	495	69
380	475	140	155	177	M22	20	1455	277.7	93	60	495	73
400	495	140	155	177	M22	22	1595	319	97	65	495	76
420	515	140	155	177	M22	24	1751	367.8	100	68	495	80
440	535	140	155	177	M22	24	1952	429.5	98	73	550	81
460	555	140	155	177	M22	24	1952	448.4	94	70	550	85
480	575	140	155	177	M22	25	2040	489.7	94	70	550	88
500	595	140	155	177	M22	25	2040	508	90	68	550	91
520	615	140	155	177	M22	28	2273	591	97	73	550	95
540	635	140	155	177	M22	28	2273	614	93	71	550	98
560	655	140	155	177	M22	30	2437	682.6	96	74	550	101
580	675	140	155	177	M22	30	2437	707.4	93	72	550	104
600	695	140	155	177	M22	30	2437	731.6	90	70	550	108

附件A：紧定套

Appendix A: Adapter sleeve

安装应注意：

Installation should pay attention to:

安装前先把紧定套、退卸套的安装表面仔细做清洁处理，不能有尖角、毛刺，如果有凸起部分，应及时处理干净，避免轴承和轴之间的相互磨损，影响装配精度，轴上通过的摩擦面需全部涂上黄油。

紧定套、退卸套经过精加工达到标准后，轴向开口因材料的重力和材料少量的应力的影响下，内径、外径是浮动尺寸，有时内径浮动尺寸大于标准尺寸，不影响装配，但是浮动尺寸小于标准尺寸时，装配要在开口处放上支撑块，使内孔尺寸控制在大于标准尺寸，才能进行装配。紧定套、退卸套初装到预定位置时，必须取掉开口处的支撑块，才能进行锁紧装配工作。

注意：要根据轴承来选择合适的紧定套。市面上销售的紧定套种类比较多，型号品牌不同价格也有所差异。如果需要更换紧定套，那么一定要根据轴承的型号大小以及品牌来选择。这样买到的紧定套才适用，不会出现紧定套磨损，相互黏住的问题。

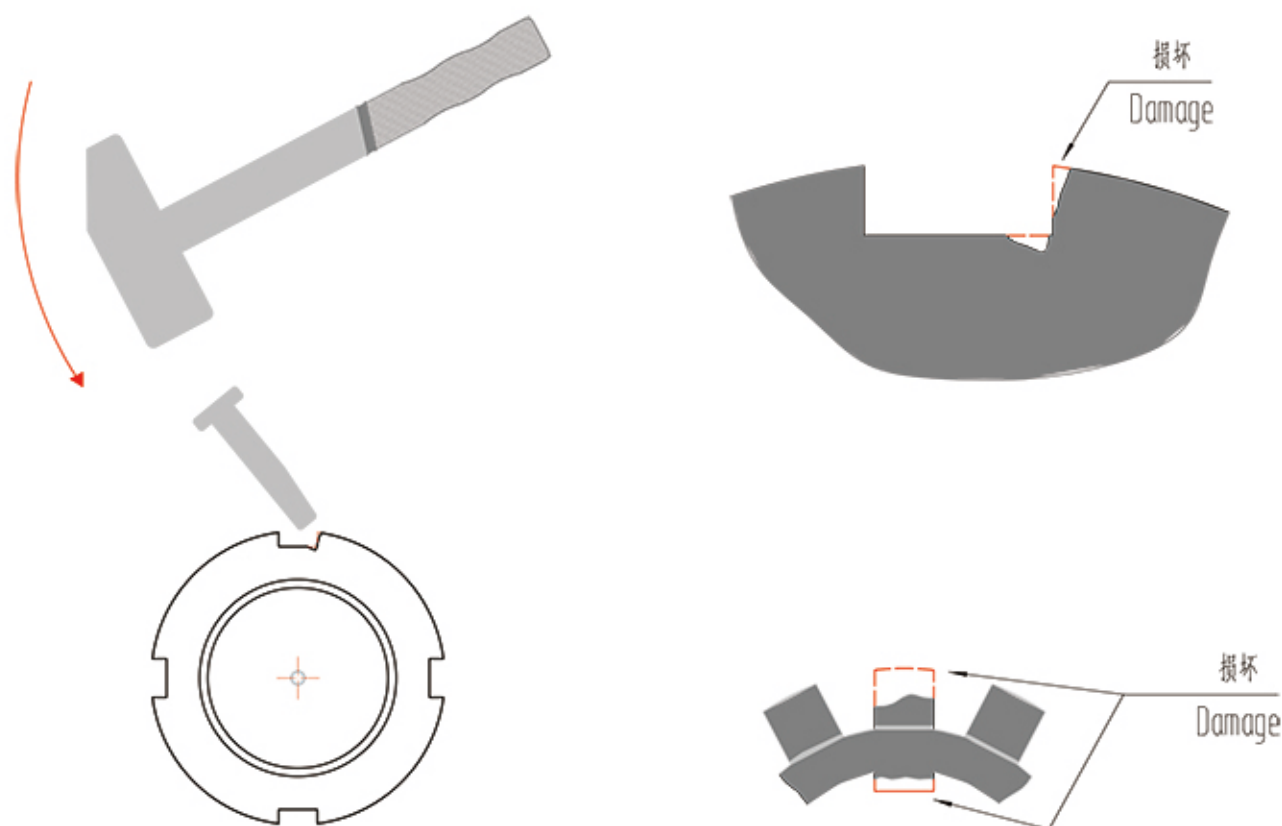
Before installation, carefully clean the installation surface of the adapter sleeve and the withdrawal sleeve, and there should be no sharp corners and burrs. If there are convex parts, they should be cleaned in time to avoid mutual wear between the bearing and the shaft, which will affect the assembly. Accuracy, the friction surface passing through the shaft should be all coated with butter.

After adapter sleeve and withdrawal sleeve are finished to the standard, the axial opening is affected by the gravity of the material and a small amount of material stress. However, when the floating size is smaller than the standard size, should place a support block at the opening to control the inner hole size to be larger than the standard size before assembly. When adapter sleeve and withdrawal sleeve are initially installed to the predetermined position, the support block at the opening must be removed before the locking assembly can be performed.

Note: Choose the appropriate adapter sleeve according to the bearing. There are many types of adapter sleeves on the market, and the prices of different models and brands are also different. If the adapter sleeve needs to be replaced, must be selected according to the model size and brand of the bearing. The adapter sleeves purchased in this way are suitable for use, and there will be no problems of wear and tear of the adapter sleeves and sticking to each other.

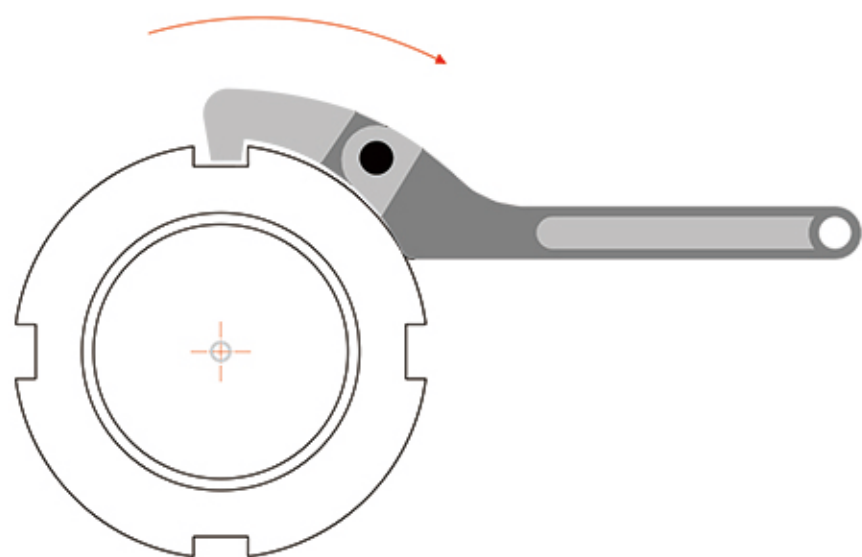
安装中不合理的安装容易造成螺母槽损伤，如下图所示冲头还容易触到垫圈，造成垫圈断裂，应使用相对应的钩头扳手进行紧定。

During installing, unreasonable installation is easy to cause damage to the nut groove. As shown in the figure below, the punch is also easy to touch the washer, causing the washer to break. The corresponding hook wrench should be used for tightening.



钩头扳手（月牙扳手），订购螺母时可选购配套扳手。

Hook wrench (crescent wrench), optional matching wrench when ordering nuts



附件B：胀紧联接套

Appendix B: Keyless Locking Devices

安装准备：

进行组装前需确保胀紧套结合面无污垢，然后均匀的涂抹薄薄一层润滑脂或润滑油（不含二硫化钼）。

松开所有螺钉数圈，使用松卸螺钉使其压环与内外锥面保持一定距离。

Installation preparation:

Before assembling, make sure that the joint surface of the locking devices is free of dirt, and then apply a thin layer of grease or lubricating oil (without molybdenum disulfide) evenly.

Loosen all screws a few turns, and use the loosening screws to keep the pressure ring at a certain distance from the inner and outer cone surfaces.

安装：

把轮毂推移到设计规定位置。

将拧松螺钉的胀套平滑的装入联结孔处，同时要注意连联结件的倾斜，然后去除拆卸螺孔中的螺钉，并预紧紧固螺钉，使其固定在设计位置。

用力矩扳手对角、交叉、均匀地拧紧联接套各紧固螺钉，但开缝处两侧的螺钉应依次先后拧紧。拧紧力矩按以下规定：

第一次：以1/3拧紧力矩Ma值拧紧；

第二次：以1/2拧紧力矩Ma值拧紧；

第三次：以拧紧力矩Ma值拧紧；

最后按螺钉排列顺序依次拧紧力矩Ma值进行检查，确保全部达到规定的拧紧力矩。

Install:

Push the hub to the position specified by the design.

Install locking devices of the loosened screw into the devices hole smoothly, while paying attention to the inclination of the devices piece, then remove the screw in the disassembly screw hole, and pre-tighten the fastening screw to fix it at the designed position.

Tighten the fastening screws of locking devices diagonally, crossly and evenly with a torque wrench, but the screws on both sides of the slit should be tightened in sequence. The tightening torque is as follows:

The first time: tighten with 1/3 tightening torque Ma value;

The second time: tighten with 1/2 tightening torque Ma value;

The third time: tighten with the tightening torque Ma value;

Finally, check the tightening torque Ma value according to the order of screw arrangement to ensure that all the tightening torques are reached.

拆卸

拧开并拔出所有拧紧的螺钉。

拧入拆卸螺钉，依次均匀的拧动螺钉，使各部位连接件相互脱离。

Disassemble

Unscrew and pull out all tightened screws.

Coagulate the dismantling screws, and turn the screws evenly in turn to disengage the connecting parts from each other.

再使用:

组装、拆卸后重新利用时, 要注意螺栓是否发生变形、变长、螺纹牙型脱落等问题。出现以上任一情况不可再使用。

Reuse:

When reusing after assembly and disassembly, pay attention to whether the bolts are deformed, lengthened, and the thread profile falls off. In any of the above situations, it can not be reused.

防护

胀紧套安装完毕, 在其外露部分需涂抹防锈油等措施进行防锈。

露天作业的设备, 工作环境较差时要定期检查外露部分的防护措施。

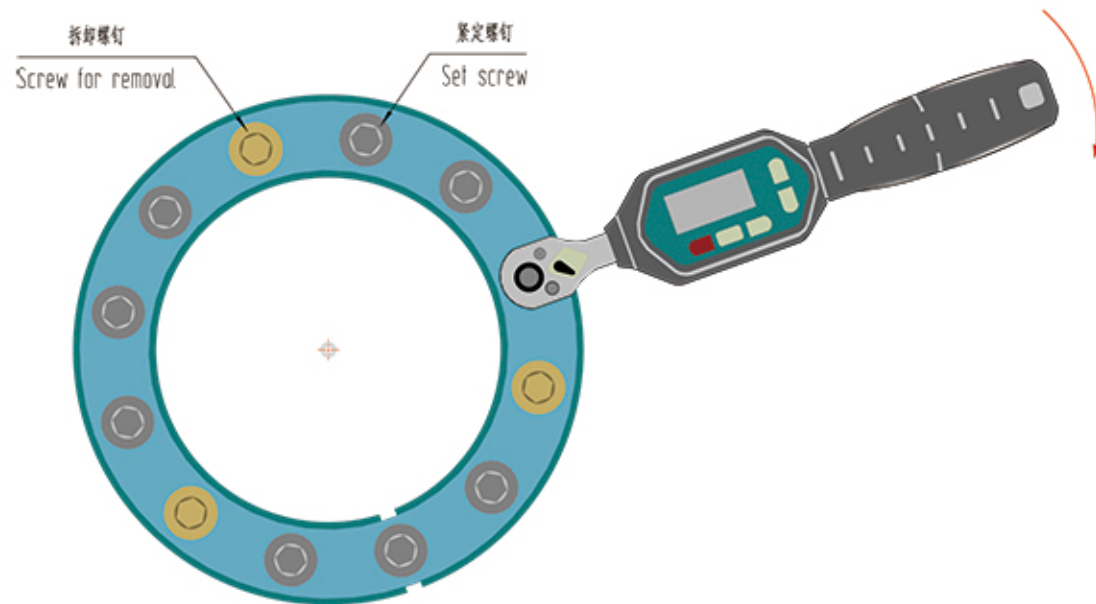
在腐蚀介质中工作的胀紧套, 应使用特别防锈功能的胀紧套, 或增加防护罩等专业措施防护。

Protection

After the locking devices is installed, measures such as spit anti-rust oil are required to prevent rust in the leakage part.

For equipment operating in the open air, the protective measures of the exposed parts should be regularly checked when the working environment is poor.

For locking devices working in corrosive media, locking devices with special anti-rust functions should be used, or professional measures such as protective covers should be added.



附表 C

Appendix C

1in=25.4mm

常用英制紧定套内孔尺寸Inch adapter sleeve inner hole size							
型号 Unit No	H mm	In	HE mm	In	HS mm	In	HE mm
05	20	3/4	19.05	7/8	22.225	—	—
06	25	1	25.4	7/8	22.225	15/16	23.8125
07	30	1.1/4	31.75	1.1/8	28.575	1.3/16	30.1625
08	35	1.1/4	31.75	1.3/8	34.925	1.5/16	33.33
09	40	1.1/2	38.1	1.5/8	41.275	1.7/16	36.5125
10	45	1.3/4	44.45	1.5/8	41.275	1.11/16	42.8625
11	50	2	50.8	1.7/8	47.625	1.15/16	49.2125
12	55	—	—	2.1/8	53.975	—	—
13	60	2.1/4	57.15	2.3/8	60.325	2.3/16	55.56
15	65	2.1/2	63.5	2.5/8	66.675	2.7/16	61.9125
16	70	2.3/4	69.85	—	—	2.11/16	68.2625
17	75	3	76.2	—	—	2.15/16	74.6125
18	80	3.1/4	82.55	—	—	3.3/16	80.96
19	85	3.1/4	82.55	—	—	—	—
20	90	3.1/2	88.9	—	—	3.7/16	87.3125
22	100	4	101.6	—	—	3.15/16	100.0125
24	110	4.1/4	107.95	—	—	4.3/16	106.3625
26	115	4.1/2	114.3	—	—	4.7/16	112.7125
28	125	5	127	—	—	4.15/*16	125.4125
30	135	5.1/4	133.35	—	—	5.3/16	131.7625
32	140	5.1/2	139.7	—	—	5.7/16	138.1125
34	150	6	152.4	—	—	5.15/16	150.8125
36	160	6.1/2	165.1	—	—	6.7/16	163.5125
38	170	6.3/4	171.45	—	—	6.15/16	176.2125
40	180	7	177.8	—	—	7.3/16	182.5625