

TDF-A 系列后向離心風機

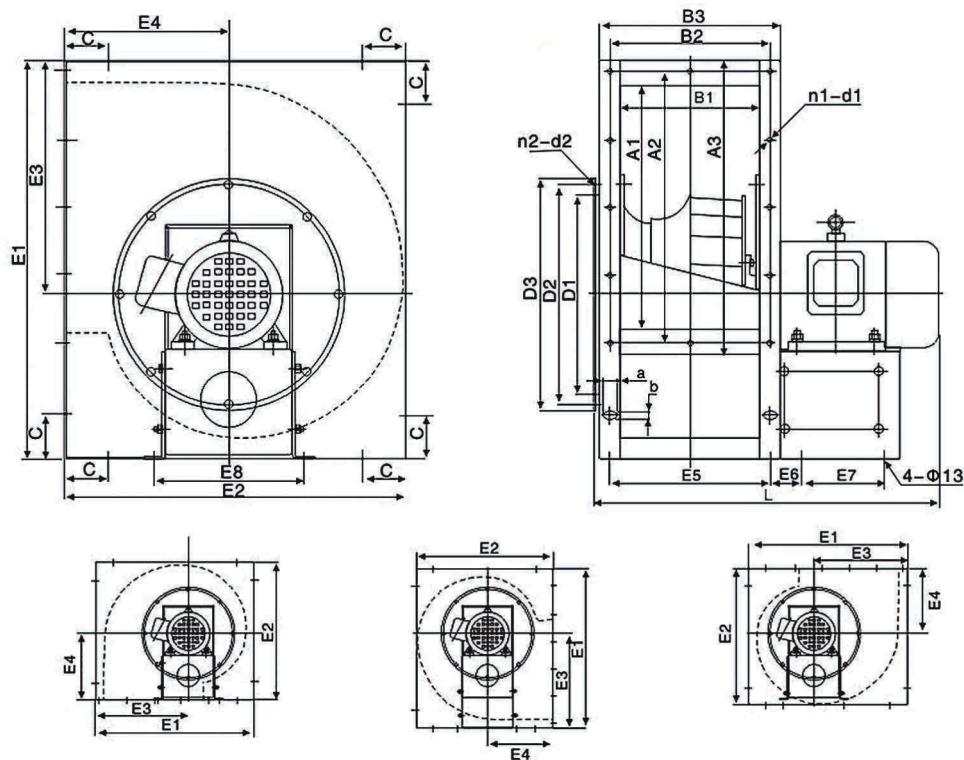
- 備有 355-1400mm 共十三款尺寸。
- 單進風、電機直聯、後彎葉輪、效率和靜壓高。
00、900、1800、2700 角度要互換。
- 用途：送排風或設備配套。



性能參數表

型號 (香港規格)	扇葉直徑 mm	額定電壓 V/Ph/Hz	電機功率 KW	最高轉速 RPM	最低風量@靜壓 m³/h @ Pa	最高風量@靜壓 m³/h @ Pa	最高噪音 dB (A)
TDF-A/355-0.55	355	380V/3/50	0.55	1400	840 @ 424	3251 @ 124	68
TDF-A/355-3.0			3.0	2900	1741 @ 1823	6736 @ 532	83
TDF-A/400-1.1	400	380V/3/50	1.1	1400	1050 @ 538	4719 @ 174	74
TDF-A/400-5.5			5.5	2900	2175 @ 2306	9774 @ 748	89
TDF-A/450-1.5	450	380V/3/50	1.5	1400	1680 @ 731	7076 @ 228	78
TDF-A/450-11.0			11.0	2900	3516 @ 3199	14809 @ 998	93
TDF-A/500-3.0	500	380V/3/50	3.0	1400	2100 @ 928	9581 @ 302	80
TDF-A/500-18.5			18.5	2900	4333 @ 3950	19769 @ 1287	96
TDF-A/560-1.5	560	380V/3/50	1.5	960	1706 @ 463	7989 @ 191	71
TDF-A/560-5.5			5.5	1450	2625 @ 1088	12291 @ 448	82
TDF-A/630-3.0	630	380V/3/50	3.0	960	2418 @ 645	11815 @ 256	80
TDF-A/630-7.5			7.5	1450	3677 @ 1492	17970 @ 592	90
TDF-A/710-4.0	710	380V/3/50	4.0	960	3150 @ 784	16979 @ 321	82
TDF-A/710-11.0			11.0	1450	4758 @ 1790	25671 @ 734	90
TDF-A/800-11.0	800	380V/3/50	11.0	960	10910 @ 1050	21100 @ 745	82
TDF-A/800-30.0			30.0	1450	16480 @ 2390	31870 @ 1700	90
TDF-A/900-15.0	900	380V/3/50	15.0	960	15540 @ 1330	30050 @ 945	83
TDF-A/900-55.0			55.0	1450	23480 @ 3030	45385 @ 2155	91
TDF-A/1000-11.0	1000	380V/3/50	11.0	720	15990 @ 920	30910 @ 660	84
TDF-A/1000-30.0			30.0	960	21360 @ 1670	41220 @ 1170	92
TDF-A/1120-18.5	1120	380V/3/50	18.5	720	22460 @ 1160	43430 @ 830	85
TDF-A/1120-45.0			45.0	960	29950 @ 2060	57910 @ 1480	93
TDF-A/1250-30.0	1250	380V/3/50	30.0	720	31230 @ 1440	60370 @ 1010	84
TDF-A/1250-75.0			75.0	960	52160 @ 2540	91620 @ 1485	92
TDF-A/1400-55.0	1400	380V/3/50	55.0	720	36560 @ 1820	95060 @ 1060	95

■ TDF-A 風機安裝尺寸 (mm)



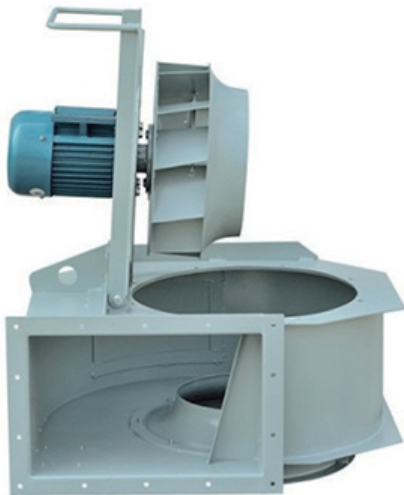
型號 Model	進風口				出風口						
	D1	D2	D3	n2-d2	A1	A2	A3	B1	B2	B3	n1-d1
TDF-A/355	355	397	420	8-φ10	446	4x122.5	530	249	2x145	329	12-φ10
TDF-A/400	400	438	464	8-φ10	496	5x108	580	279	3x107	359	16-φ10
TDF-A/450	450	490	510	8-φ10	561	5x121	645	309	3x118.3	389	16-φ10
TDF-A/500	500	546	565	8-φ10	631	5x135	715	349	3x130	429	16-φ10
TDF-A/560	560	600	636	8-φ12	705	6x125	800	384	4x107.5	474	20-φ10
TDF-A/630	630	680	710	8-φ12	790	6x140	885	434	4x120	524	20-φ10
TDF-A/710	710	762	800	8-φ15	885	6x155	978	490	4x134.5	580	20-φ10

型號 No	功率-極數	E1	E2	E3	E4	E5	E6	E7	E8	L	C	axb
355	0.55kw-4	720	620	422	298	290	55.5	100	240	555	80	13x25
	3kw-2							150	270	630		
400	1.1kw-4	810	700	471	339	321	55	110	250	600	120	13x25
	5.5kw-2							180	320	735		
450	1.5kw-4	900	780	525	375	355	53	130	260	660	120	13x25
	11kw-2							280	400	860		
500	3kw-4	990	860	577	413	390	55.5	150	280	735	150	13x25
	18.5kw-2							310	400	950		
560	1.5kw-6	1070	930	647	423	430	58	155	280	775	150	13x25
	5.5kw-4							195	350	850		
630	3kw-6	1200	1050	722.5	477.5	480	58	220	370	895	150	13x25
	7.5kw-4									935		
710	4kw-6	1350	1190	808	542	538	58	225	370	995	150	13x25
	11kw-4							295	400	1050		

注：TDF-A/800 及以上安裝尺寸圖需另外提供。

TDF-AL 系列后向離心風機

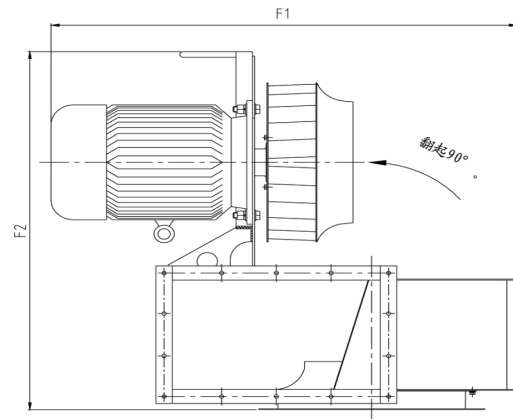
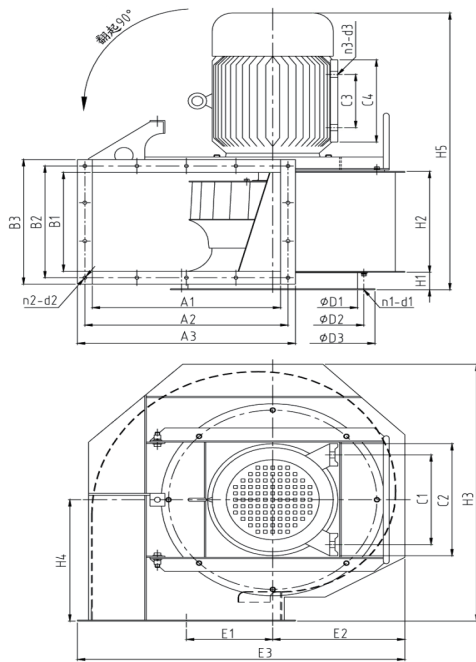
- 備有 355-710mm 共七款尺寸。
- 單進風、電機直聯、後彎葉輪、效率和靜壓高。可立式安裝，葉輪可翻蓋抽出清理。
- 用途：塗裝設備配套專用，廚房專用。



性能參數表

型號 (香港規格)	扇葉直徑 mm	額定電壓 V/Ph/Hz	電機功率 KW	最高轉速 RPM	最低風量@靜壓 m³/h @ Pa	最高風量@靜壓 m³/h @ Pa	最高噪音 dB (A)
TDF-AL/355-0.55	355	380V/3/50	0.55	1400	840 @ 424	3251 @ 124	68
TDF-AL/355-3.0			3.0	2900	1741 @ 1823	6736 @ 532	83
TDF-AL/400-1.1	400	380V/3/50	1.1	1400	1050 @ 538	4719 @ 174	74
TDF-AL/400-5.5			5.5	2900	2175 @ 2306	9774 @ 748	89
TDF-AL/450-1.5	450	380V/3/50	1.5	1400	1680 @ 731	7076 @ 228	78
TDF-AL/450-11.0			11.0	2900	3516 @ 3199	14809 @ 998	93
TDF-AL/500-3.0	500	380V/3/50	3.0	1400	2100 @ 928	9581 @ 302	80
TDF-AL/500-18.5			18.5	2900	4333 @ 3950	19769 @ 1287	96
TDF-AL/560-1.5	560	380V/3/50	1.5	960	1706 @ 463	7989 @ 191	71
TDF-AL/560-5.5			5.5	1450	2625 @ 1088	12291 @ 448	82
TDF-AL/630-3.0	630	380V/3/50	3.0	960	2418 @ 645	11815 @ 256	80
TDF-AL/630-7.5			7.5	1450	3677 @ 1492	17970 @ 592	90
TDF-AL/710-4.0	710	380V/3/50	4.0	960	3150 @ 784	16979 @ 321	82
TDF-AL/710-11.0			11.0	1450	4758 @ 1790	25671 @ 734	90

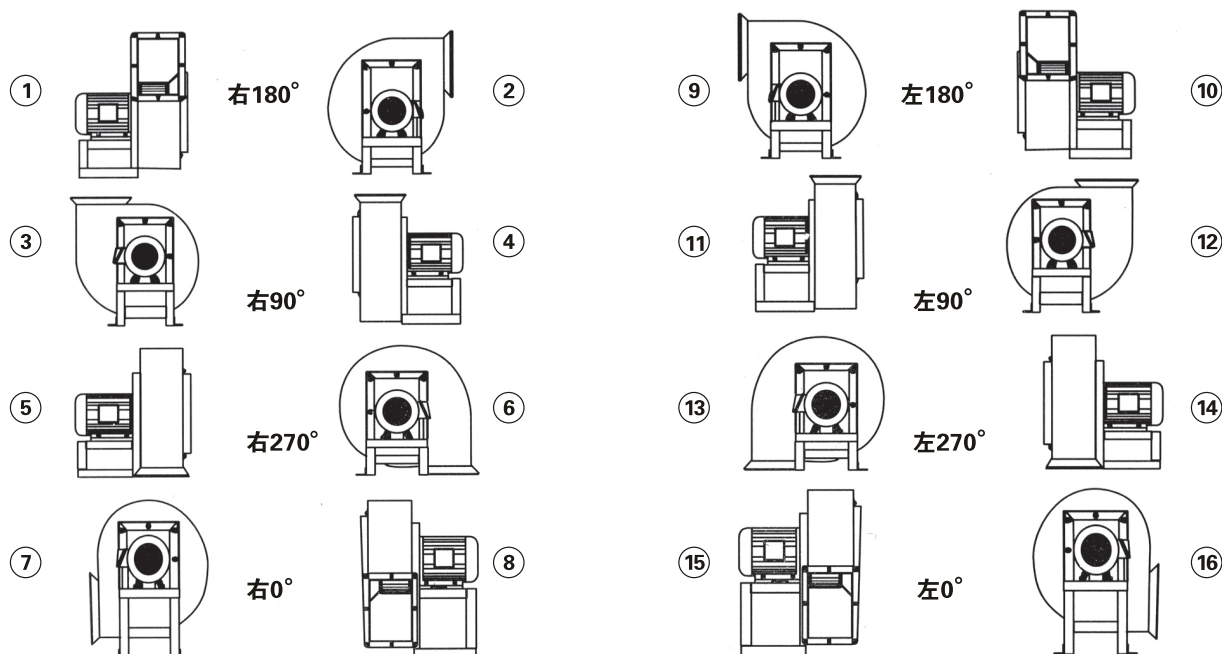
■ TDF-AL 風機安裝尺寸 (mm)



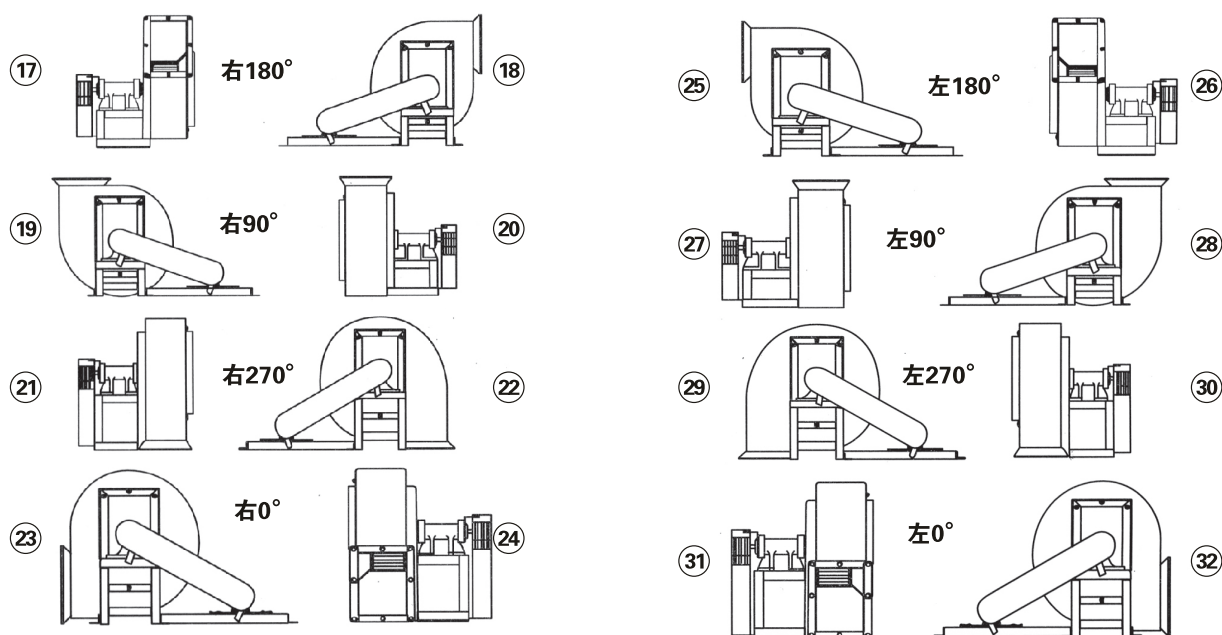
型號 (No)	配用電機	進風口					出風口						
	功率 (kw)	ΦD1	ΦD2	ΦD3	H1	n1-d	A1	A2	A3	B1	B2	B3	n2-d2
355	0.55kw-4	Φ355	Φ397	Φ455	50	8-Φ12	400	440	480	249	289	329	14-Φ10
	3kw-2												
400	1.1kw-4	Φ400	Φ438	Φ500	50	8-Φ12	450	490	530	279	319	359	14-Φ10
	5.5kw-2												
450	1.5kw-4	Φ450	Φ490	Φ550	50	8-Φ12	506	546	586	309	349	389	14-Φ10
	11kw-2												
500	3kw-4	Φ500	Φ546	Φ600	50	8-Φ12	560	600	640	349	390	429	14-Φ10
	18.5kw-2												
560	1.5kw-6	Φ560	Φ600	Φ660	50	8-Φ15	600	629	669	384	424	464	16-Φ10
	5.5kw-4												
630	3kw-2	Φ630	Φ680	Φ730	50	8-Φ15	746.5	786.5	786.5	434	480	514	20-Φ10
	7.5kw-4												
710	11kw-4	Φ710	Φ762	Φ810	50	8-Φ15	887.5	927.5	967.5	490	530	570	24-Φ10
	4kw-6												

型號 Model	安裝尺寸														重量 (kg)
	H2	H3	H4	H5	E1	E2	E3	C1	C2	C3	C4	n3-d3	F1	F2	
TDF-AL/355	255	647	306	555	182	286	710	125	165	100	130	4-Φ12	790	880	55
				630				160	205	140	176	4-Φ15	865		72
TDF-AL/400	285	717	340	595	212	317	790	140	180	100	130	4-Φ12	825	930	70
				735				216	280	140	200	4-Φ15	960		115
TDF-AL/450	315	802	379	655	232	355	880	140	180	125	155	4-Φ12	945	1030	88
				865				254	330	210	270	4-Φ19	1150		182
TDF-AL/500	355	875	413	730	280	370	970	160	205	140	176	4-Φ15	1045	1140	133
				945				254	330	254	314	4-Φ19	1260		240
TDF-AL/560	390	975	454	765	287.5	438	1080	160	205	140	176	4-Φ15	1115	1240	132
				840				216	280	140	200	4-Φ15	1185		166
TDF-AL/630	440	1090	505	890	325	491	1210	216	280	140	200	4-Φ15	1315	1410	183
				930				216	280	178	238	4-Φ15	1355		200
TDF-AL/710	496	1215	560	1100	320	549	1353	254	330	210	270	4-Φ19	1590	1580	288
				1020				216	280	178	238	4-Φ15	1510		235

直聯傳動



皮帶傳動

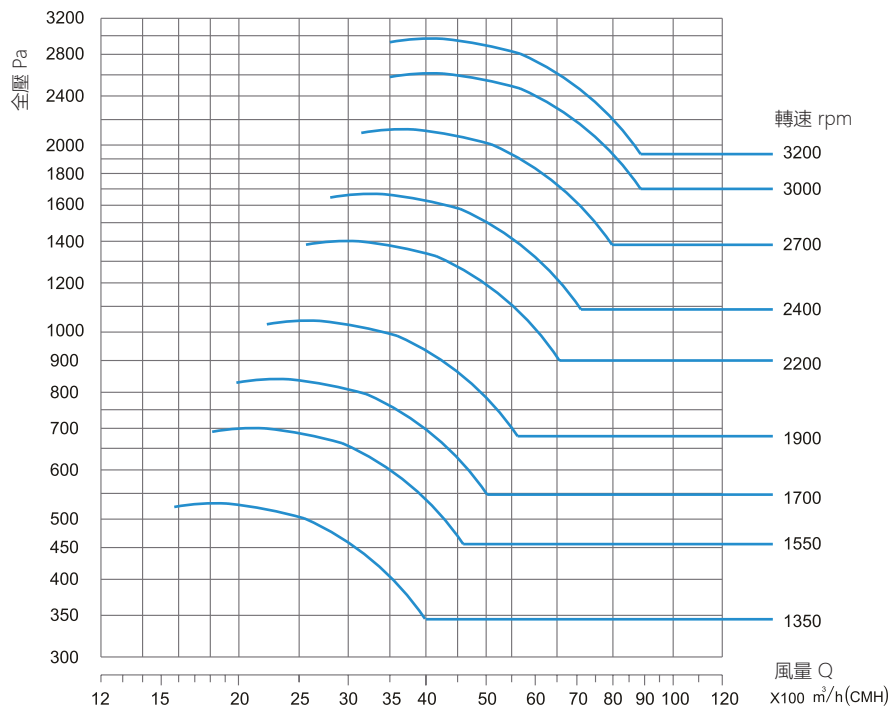


TDF-C 系列后向離心風機

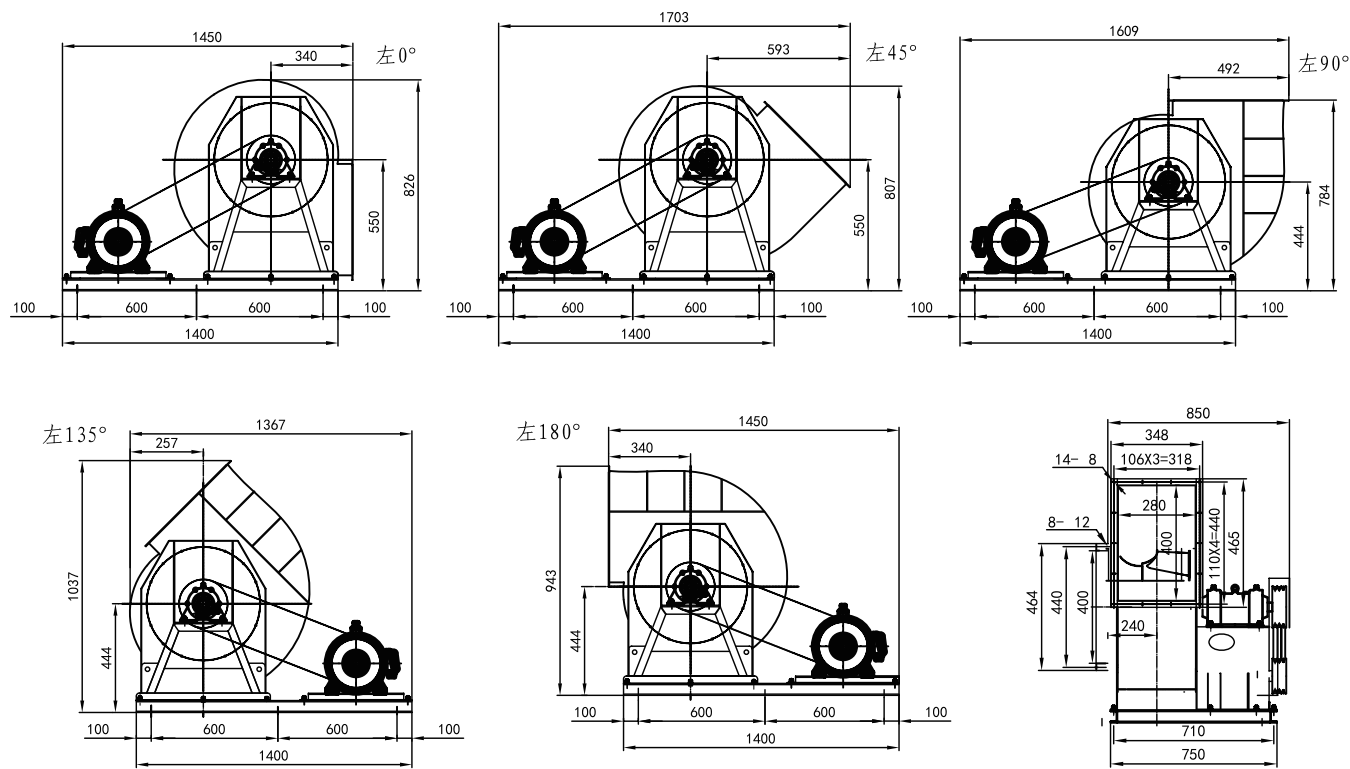
- 備有 400-2000mm 共十五款尺寸。
- 單進風、後彎葉輪、效率和靜壓高。
可拆裝結構，多種角度互換，傳動方式為皮帶傳動結構。
- 用途：廣泛用於各企業垃圾焚燒、塗裝等場所的通風換氣。



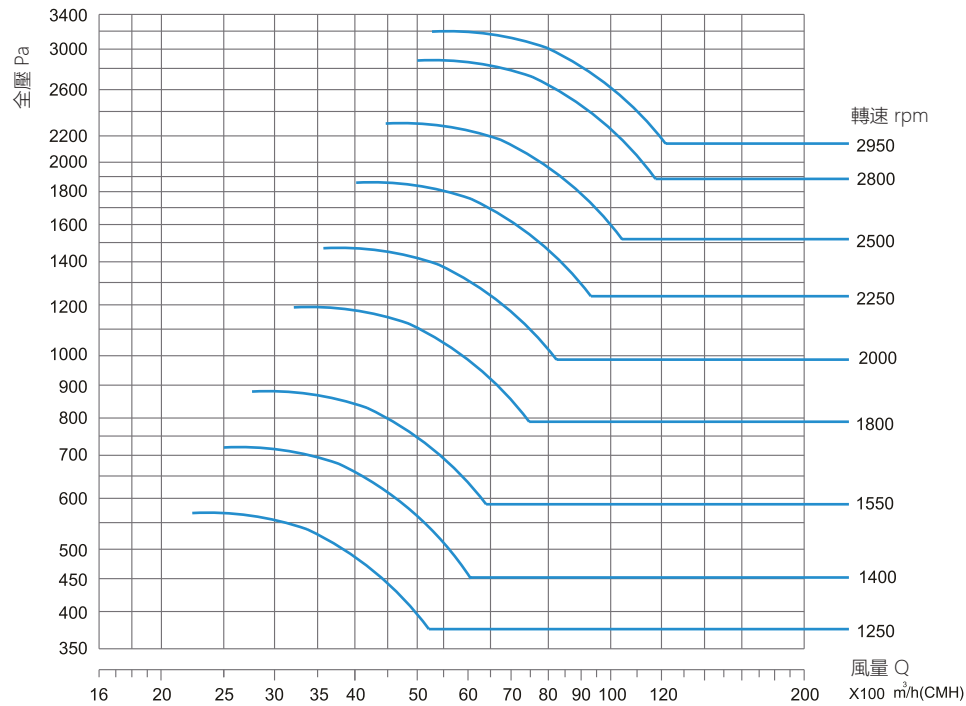
TDF-C/400



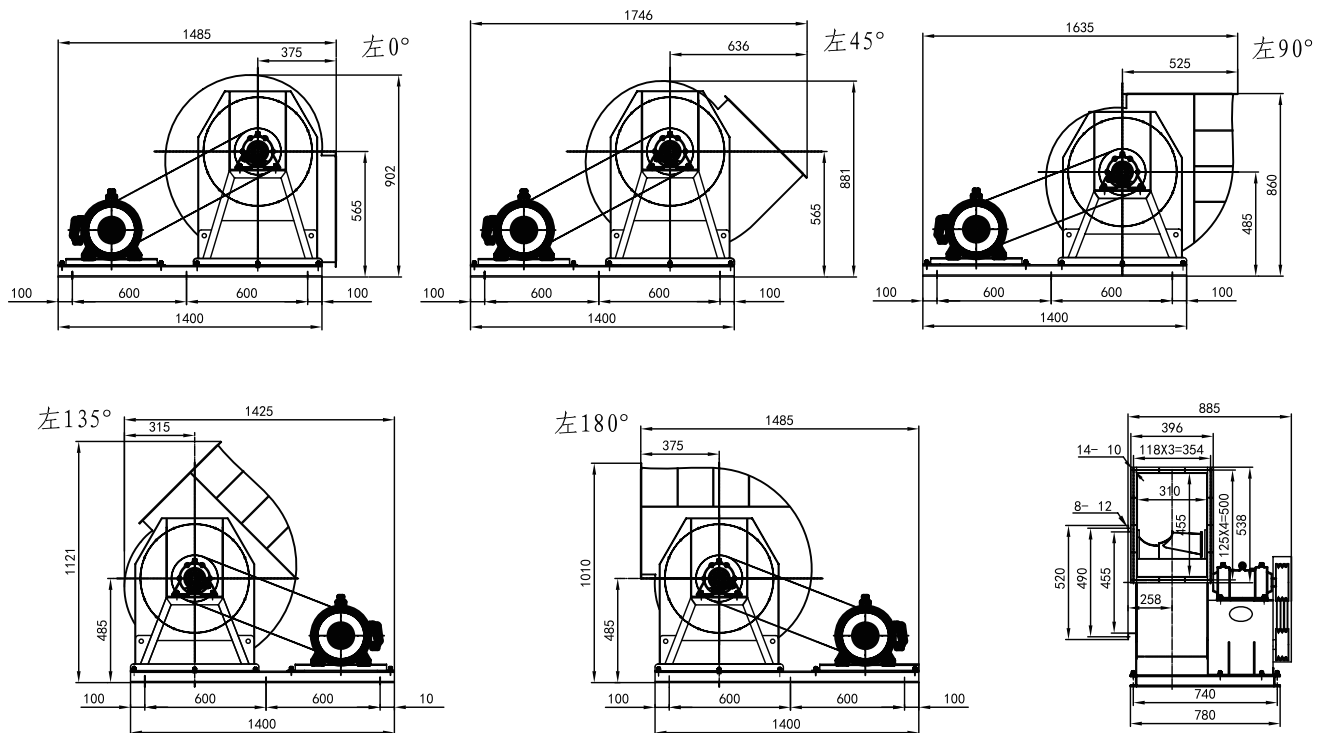
型號 (香港規格)	扇葉直徑 mm	額定電壓 V/Ph/Hz	電機功率 KW	最高轉速 RPM	最低風量@靜壓 m³/h @ Pa	最高風量@靜壓 m³/h @ Pa
TDF-C/400-11.0	400	380V/3/50	11.0	3200	4571 @ 2833	9132 @ 1700
TDF-C/400-7.5			7.5	3000	4270 @ 2550	8530 @ 1530
TDF-C/400-5.5			5.5	2700	3840 @ 2060	7680 @ 1240
TDF-C/400-4.0			4.0	2400	3420 @ 1630	6820 @ 980
TDF-C/400-3.0			3.0	2200	3130 @ 1370	6250 @ 820
TDF-C/400-2.2			2.2	1900	2705 @ 1020	5400 @ 610
TDF-C/400-1.5			1.5	1700	2420 @ 815	4830 @ 490
TDF-C/400-1.1			1.1	1550	2210 @ 680	4410 @ 410
TDF-C/400-0.75			0.75	1350	1920 @ 515	3840 @ 310



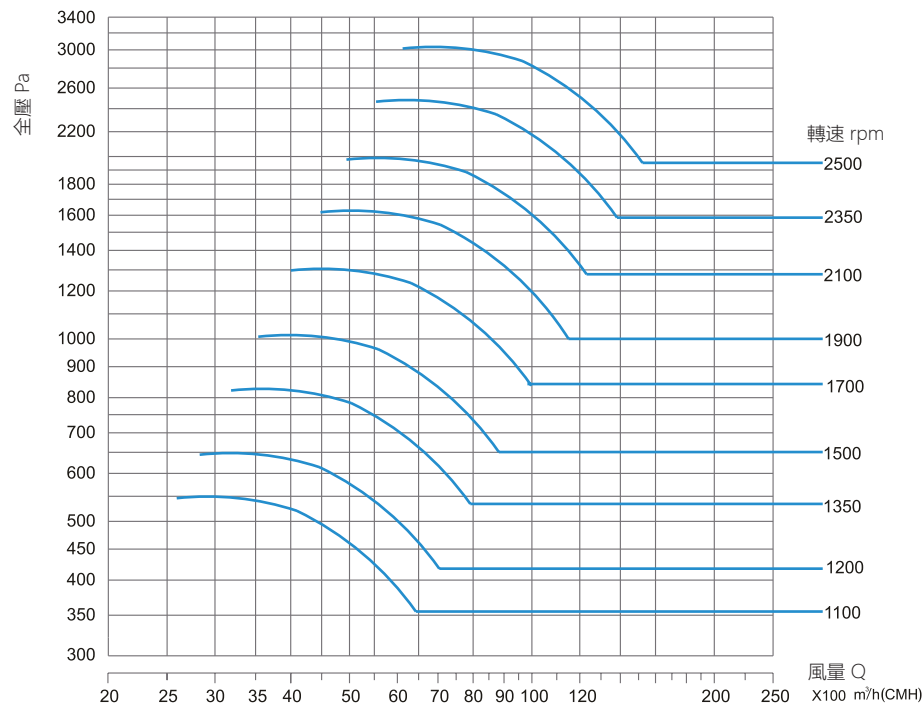
TDF-C/450



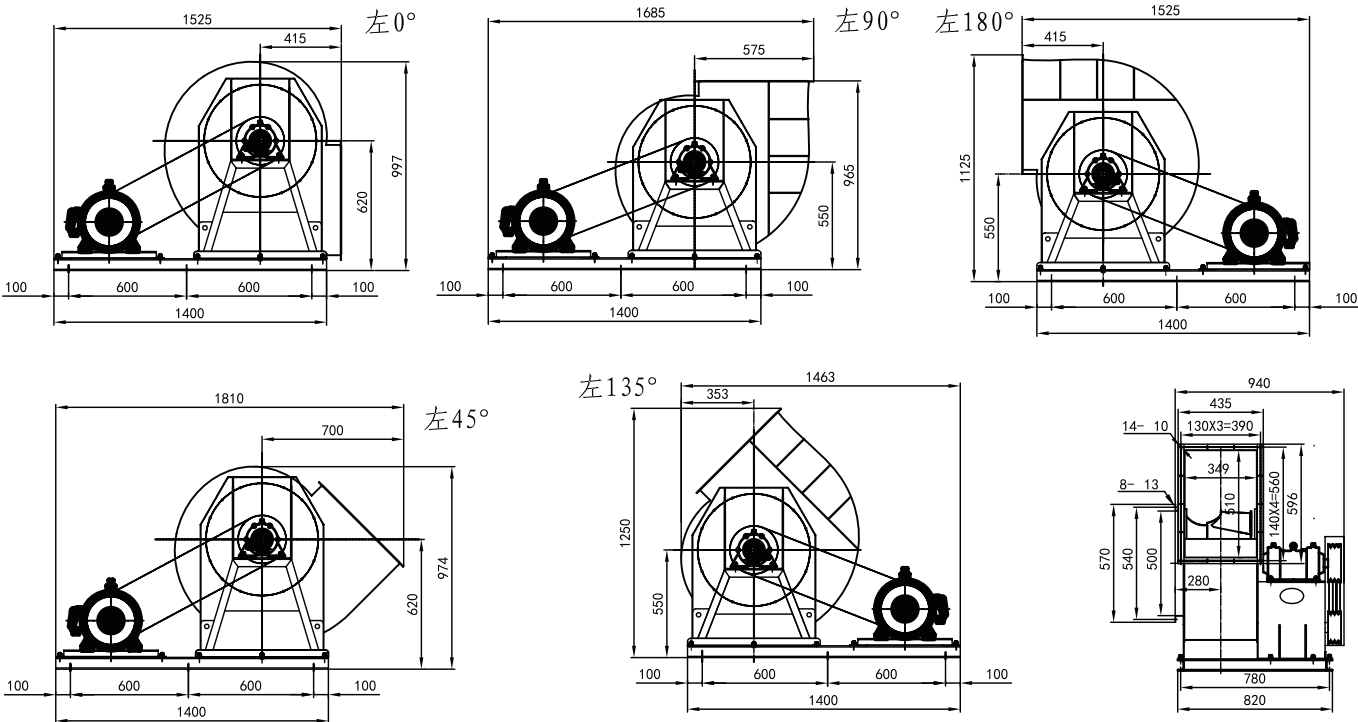
型號 (香港規格)	扇葉直徑 mm	額定電壓 V/Ph/Hz	電機功率 KW	最高轉速 RPM	最低風量@靜壓 m³/h @ Pa	最高風量@靜壓 m³/h @ Pa
TDF-C/450-11.0	450	380V/3/50	11.0	2940	6013 @ 2975	12026 @ 1776
TDF-C/450-11.0			11.0	2800	5670 @ 2805	11340 @ 1675
TDF-C/450-7.5			7.5	2500	5060 @ 2235	10125 @ 1335
TDF-C/450-5.5			5.5	2250	4560 @ 1810	9110 @ 1080
TDF-C/450-4.0			4.0	2000	4050 @ 1430	8100 @ 855
TDF-C/450-3.0			3.0	1800	3645 @ 1160	7290 @ 690
TDF-C/450-2.2			2.2	1550	3140 @ 860	6280 @ 510
TDF-C/450-1.5			1.5	1400	2835 @ 700	5670 @ 420
TDF-C/450-1.1			1.1	1250	2530 @ 560	5060 @ 330



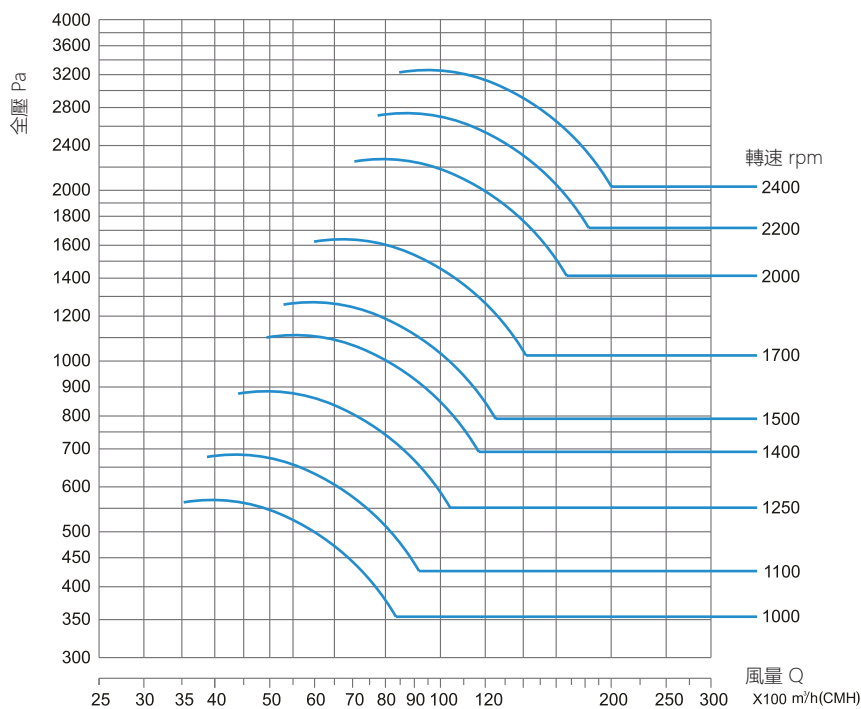
TDF-C/500



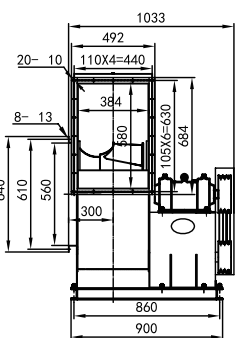
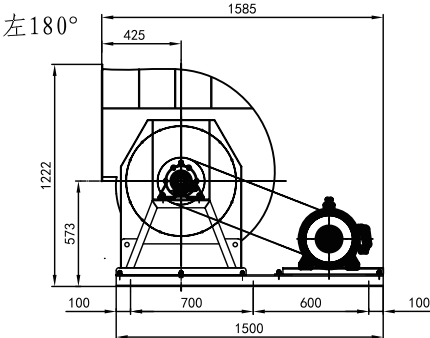
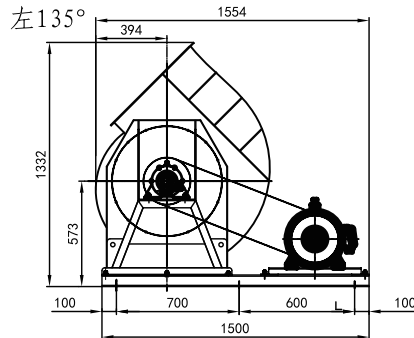
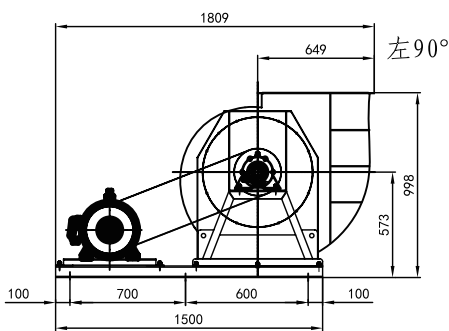
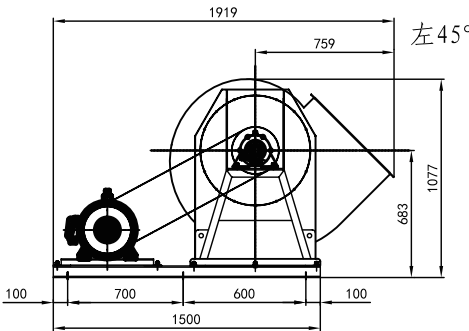
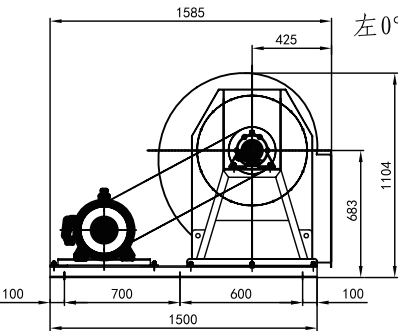
型號 (香港規格)	扇葉直徑 mm	額定電壓 V/Ph/Hz	電機功率 KW	最高轉速 RPM	最低風量@靜壓 m³/h @ Pa	最高風量@靜壓 m³/h @ Pa
TDF-C/500-15.0	500	380V/3/50	15.0	2500	6986 @ 2711	13971 @ 1644
TDF-C/500-11.0			11.0	2350	6525 @ 2440	13050 @ 1480
TDF-C/500-7.5			7.5	2100	5830 @ 1950	11660 @ 1180
TDF-C/500-5.5			5.5	1900	5275 @ 1595	10550 @ 965
TDF-C/500-4.0			4.0	1700	4720 @ 1280	9440 @ 770
TDF-C/500-3.0			3.0	1500	4165 @ 995	8330 @ 600
TDF-C/500-2.2			2.2	1350	3750 @ 805	7500 @ 485
TDF-C/500-1.5			1.5	1200	3330 @ 635	6660 @ 385
TDF-C/500-1.5			1.5	1100	3050 @ 535	6110 @ 320



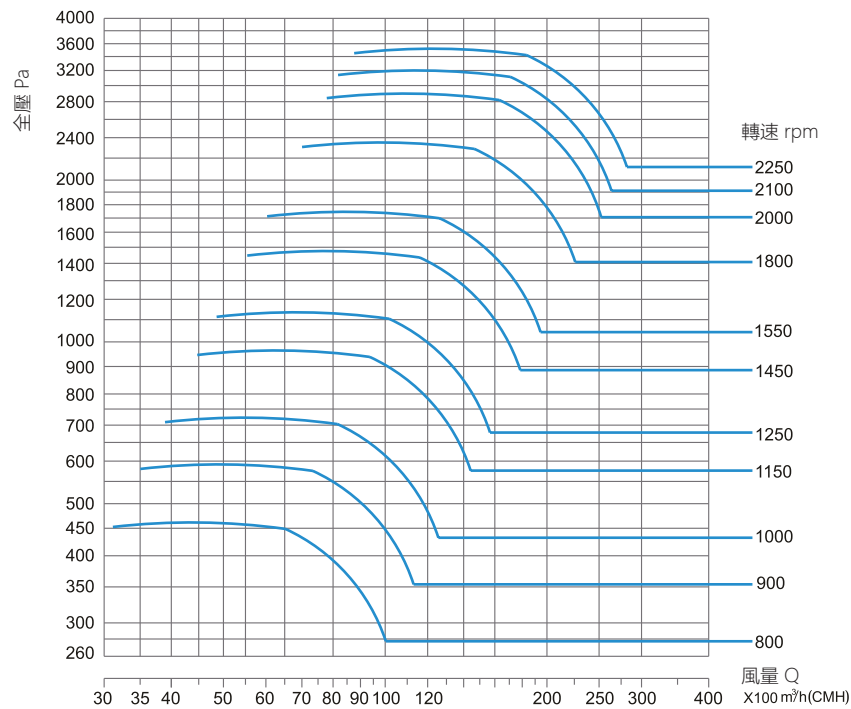
TDF-C/560



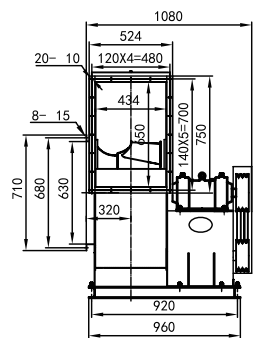
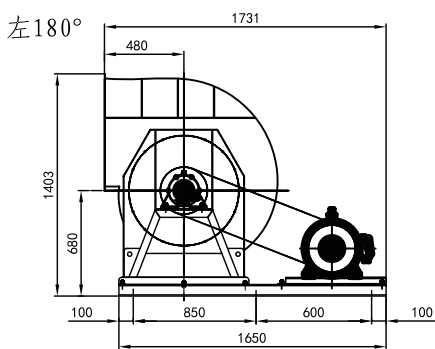
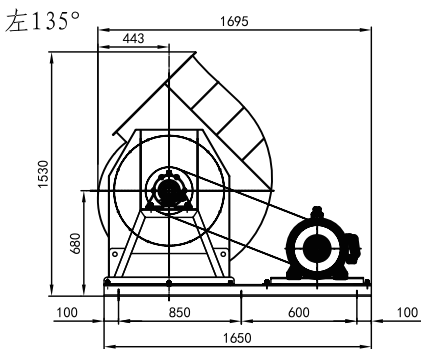
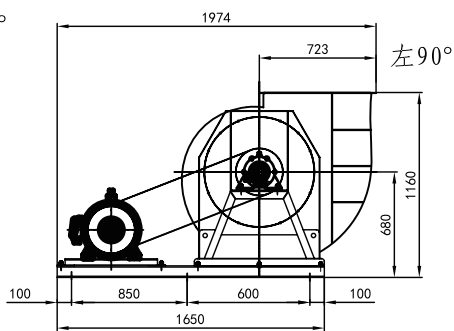
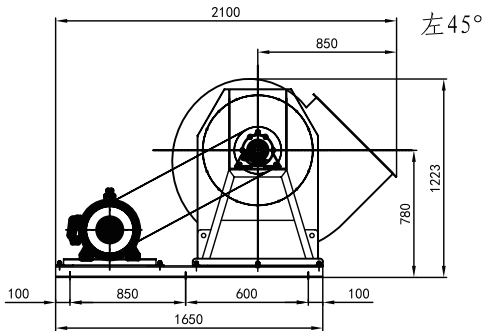
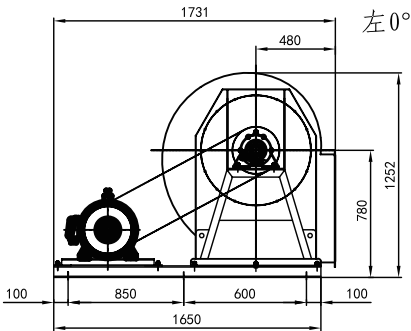
型號 (香港規格)	扇葉直徑 mm	額定電壓 V/Ph/Hz	電機功率 KW	最高轉速 RPM	最低風量@靜壓 m³/h @ Pa	最高風量@靜壓 m³/h @ Pa
TDF-C/560-18.5	560	380V/3/50	18.5	2400	9446 @ 2945	18891 @ 1794
TDF-C/560-15.0			15.0	2200	8580 @ 2675	17160 @ 1630
TDF-C/560-11.0			11.0	2000	7800 @ 2210	15600 @ 1350
TDF-C/560-7.5			7.5	1700	6630 @ 1600	13260 @ 975
TDF-C/560-5.5			5.5	1500	5850 @ 1240	11700 @ 760
TDF-C/560-4.0			4.0	1400	5460 @ 1080	10920 @ 660
TDF-C/560-3.0			3.0	1250	4875 @ 860	9750 @ 530
TDF-C/560-2.2			2.2	1100	4290 @ 670	8580 @ 410
TDF-C/560-1.5			1.5	1000	3900 @ 550	7800 @ 340



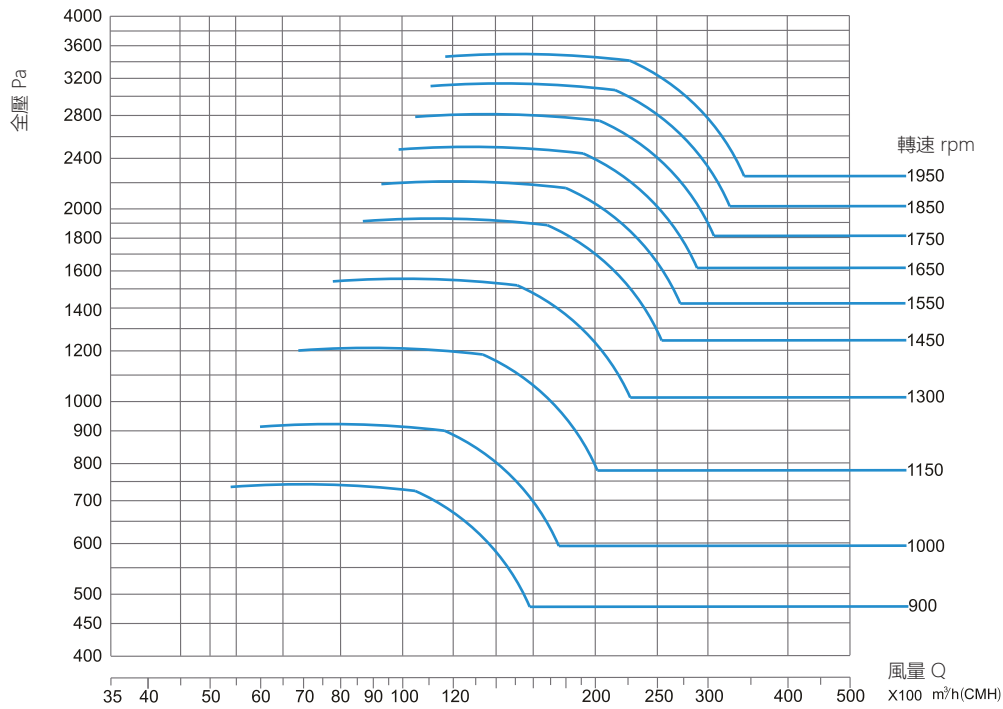
TDF-C/630



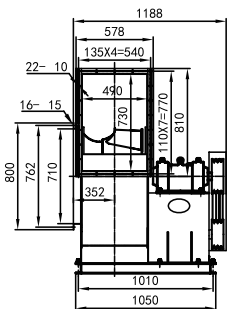
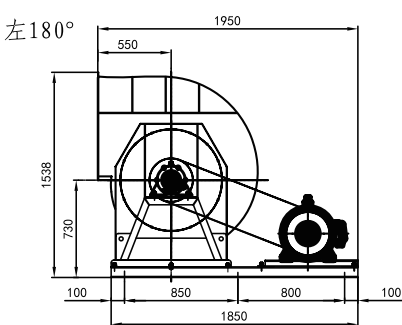
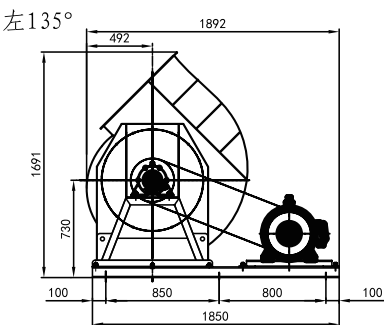
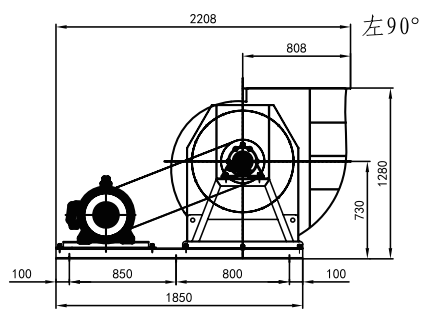
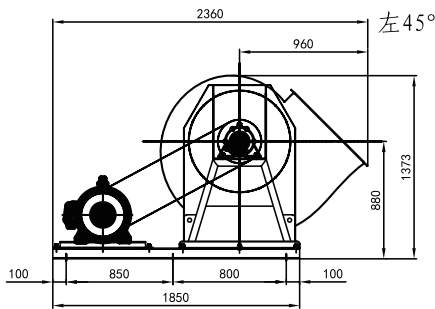
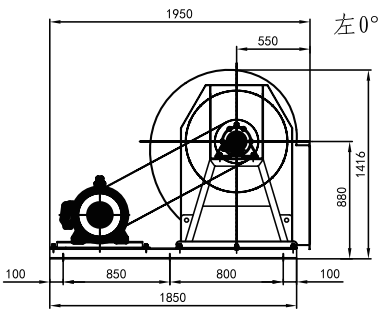
型號 (香港規格)	扇葉直徑 mm	額定電壓 V/Ph/Hz	電機功率 KW	最高轉速 RPM	最低風量@靜壓 m³/h @ Pa	最高風量@靜壓 m³/h @ Pa
TDF-C/630-30.0	630	380V/3/50	30.0	2250	10517 @ 3624	27333 @ 3048
TDF-C/630-15.0			15.0	1800	8330 @ 2300	21650 @ 1300
TDF-C/630-11.0			11.0	1550	7170 @ 1710	18650 @ 960
TDF-C/630-7.5			7.5	1425	6590 @ 1440	17140 @ 810
TDF-C/630-5.5			5.5	1250	5780 @ 1110	15040 @ 625
TDF-C/630-4.0			4.0	1150	5320 @ 940	13835 @ 530
TDF-C/630-3.0			3.0	1000	4630 @ 710	12030 @ 400
TDF-C/630-2.2			2.2	900	4160 @ 575	10830 @ 320
TDF-C/630-1.5			1.5	800	3700 @ 455	9620 @ 255



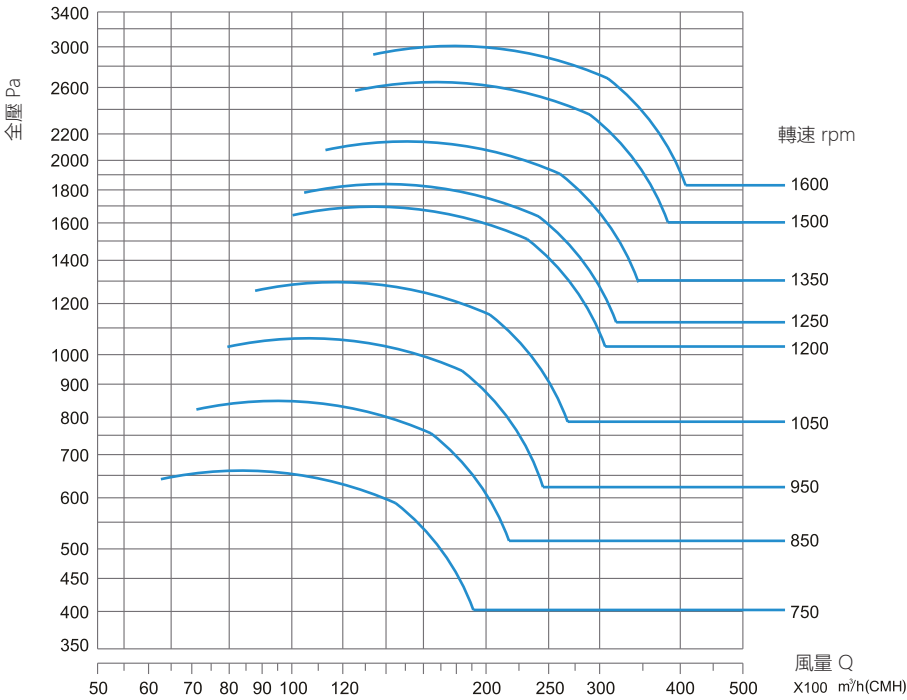
TDF-C/710



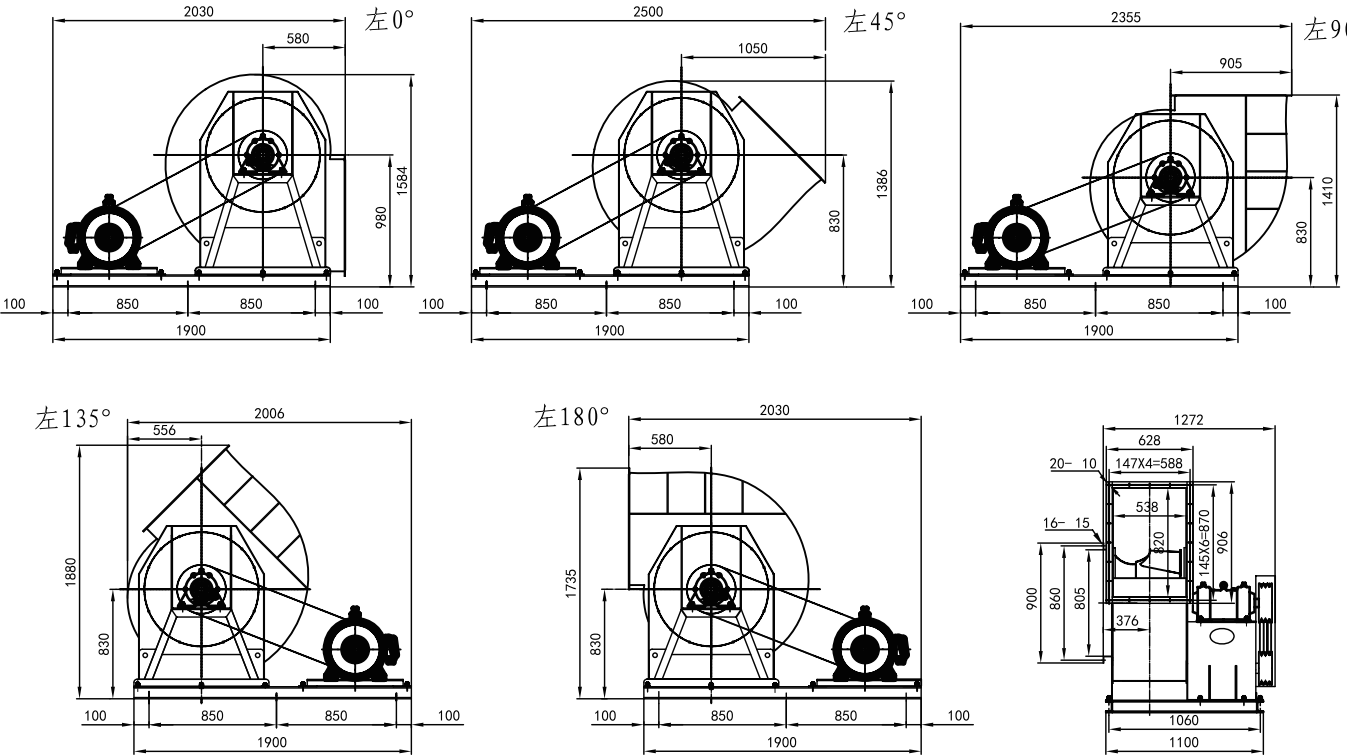
型號 (香港規格)	扇葉直徑 mm	額定電壓 V/Ph/Hz	電機功率 KW	最高轉速 RPM	最低風量@靜壓 m³/h @ Pa	最高風量@靜壓 m³/h @ Pa
TDF-C/710-37.0	710	380V/3/50	37.0	1950	12901 @ 3520	33545 @ 1982
TDF-C/710-30.0			30.0	1850	12287 @ 3200	31947 @ 1802
TDF-C/710-30.0			30.0	1750	11702 @ 2909	30426 @ 1638
TDF-C/710-22.0			22.0	1650	10930 @ 2450	28420 @ 1380
TDF-C/710-18.5			18.5	1550	10270 @ 2160	26695 @ 1215
TDF-C/710-15.0			15.0	1450	9610 @ 1890	24970 @ 1065
TDF-C/710-11.0			11.0	1300	8610 @ 1520	22390 @ 855
TDF-C/710-7.5			7.5	1150	7620 @ 1190	19810 @ 670
TDF-C/710-5.5			5.5	1000	6625 @ 900	17220 @ 505
TDF-C/710-4.0			4.0	900	5960 @ 730	15500 @ 410



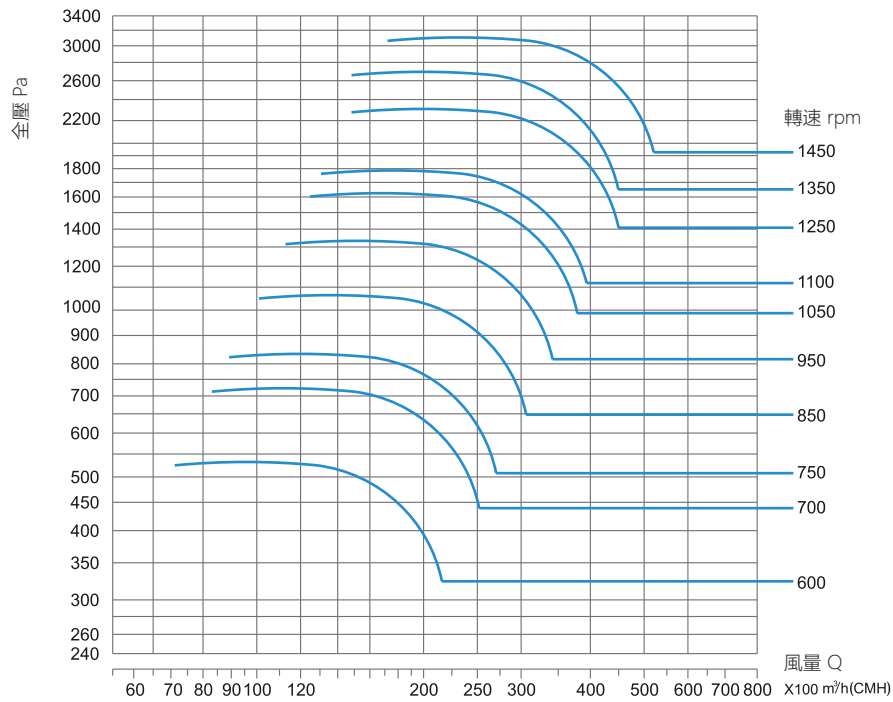
TDF-C/800



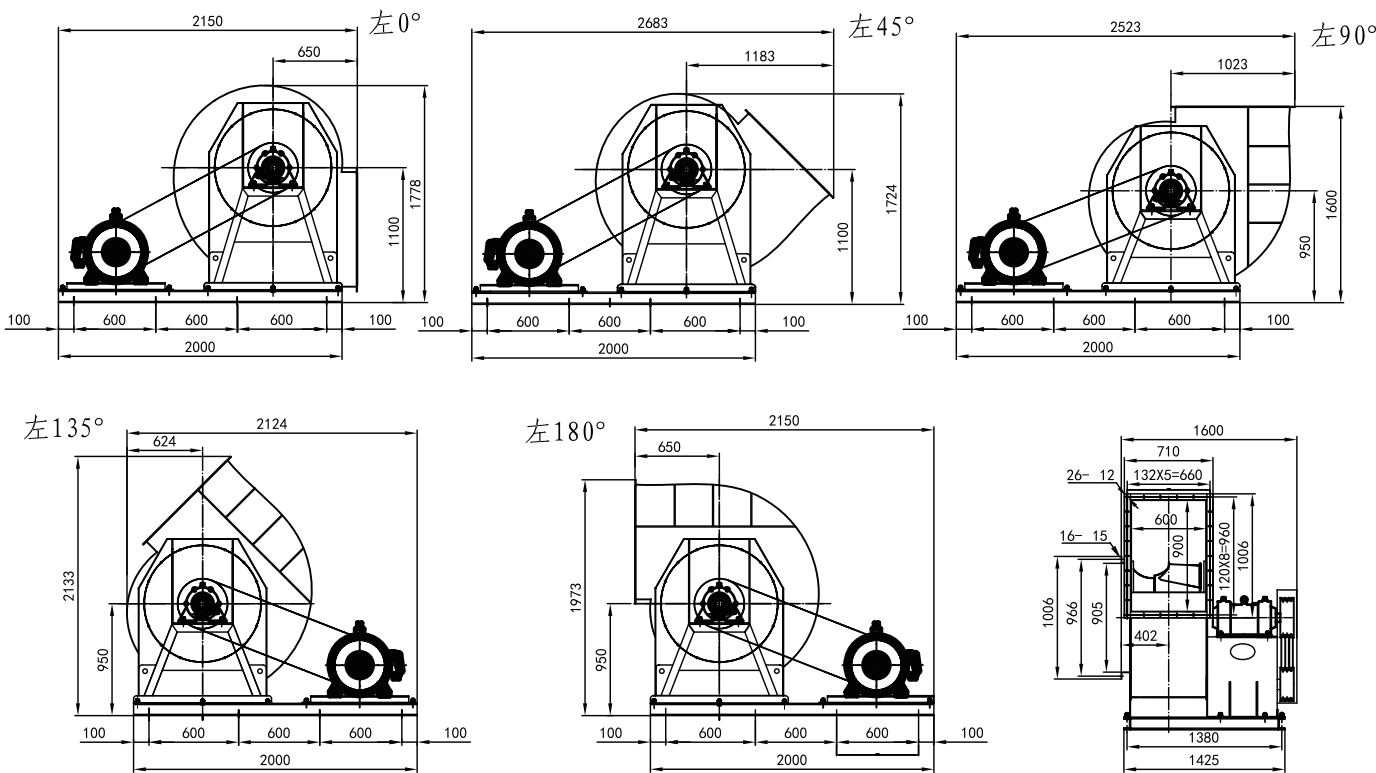
型號 (香港規格)	扇葉直徑 mm	額定電壓 V/Ph/Hz	電機功率 KW	最高轉速 RPM	最低風量@靜壓 m³/h @ Pa	最高風量@靜壓 m³/h @ Pa
TDF-C/800-37.0	800	380V/3/50	37.0	1600	15224 @ 2855	39564 @ 1578
TDF-C/800-30.0			30.0	1500	14220 @ 2570	36955 @ 1420
TDF-C/800-22.0			22.0	1350	12790 @ 2080	33260 @ 1150
TDF-C/800-18.5			18.5	1250	11850 @ 1785	30795 @ 990
TDF-C/800-15.0			15.0	1200	11370 @ 1645	29560 @ 910
TDF-C/800-11.0			11.0	1050	9950 @ 1260	25870 @ 695
TDF-C/800-7.5			7.5	950	9000 @ 1030	23405 @ 570
TDF-C/800-5.5			5.5	850	8060 @ 825	20940 @ 455
TDF-C/800-4.0			4.0	750	7110 @ 640	18480 @ 355



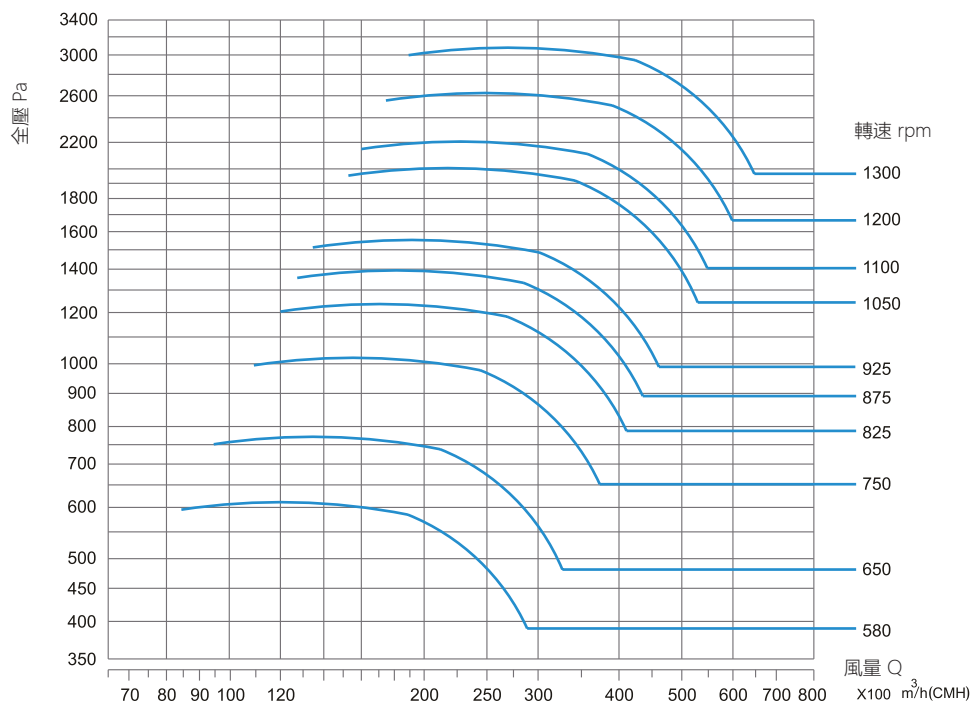
TDF-C/900



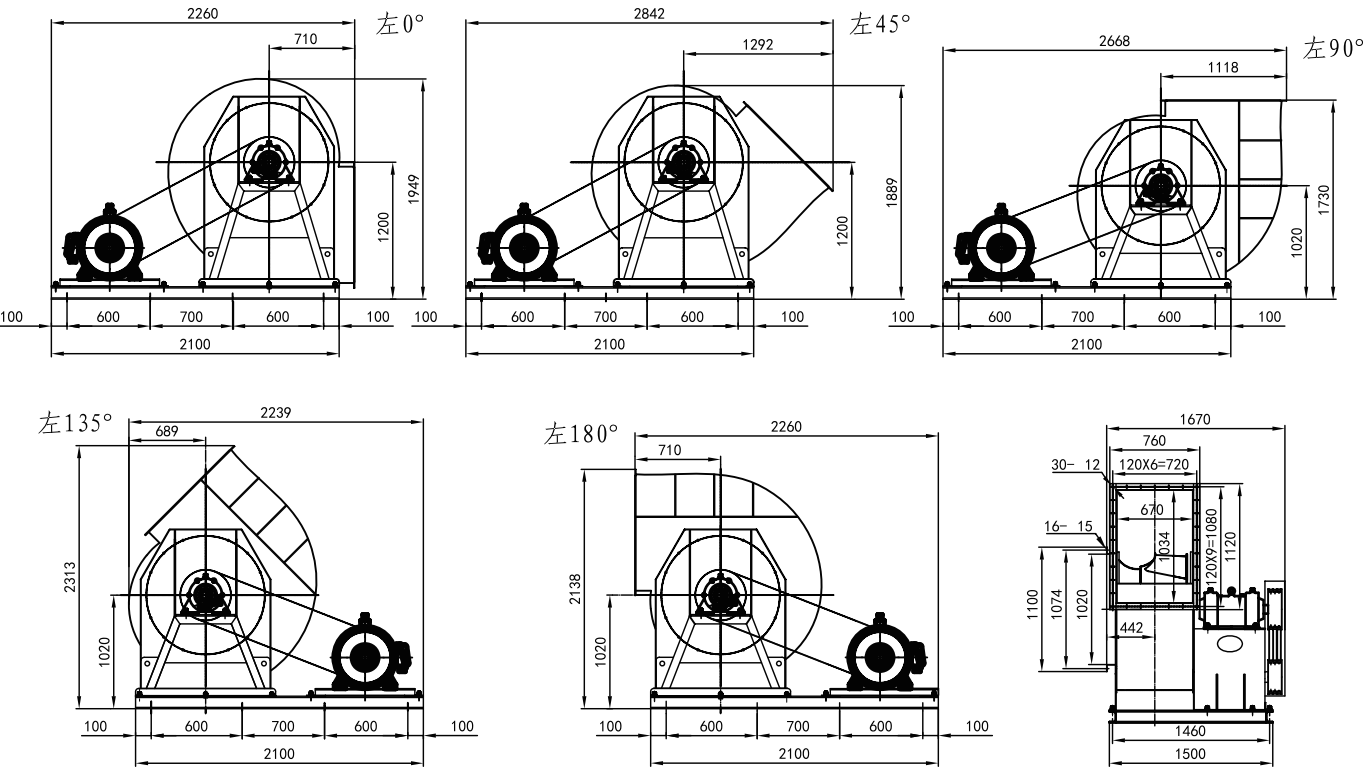
型號 (香港規格)	扇葉直徑 mm	額定電壓 V/Ph/Hz	電機功率 KW	最高轉速 RPM	最低風量@靜壓 m³/h @ Pa	最高風量@靜壓 m³/h @ Pa
TDF-C/900-45.0	900	380V/3/50	45.0	1450	19678 @ 2856	51168 @ 1596
TDF-C/900-37.0			37.0	1350	18391 @ 2505	47821 @ 1400
TDF-C/900-30.0			30.0	1250	16860 @ 2255	43840 @ 1260
TDF-C/900-22.0			22.0	1100	14840 @ 1745	38580 @ 980
TDF-C/900-18.5			18.5	1050	14165 @ 1590	36830 @ 890
TDF-C/900-15.0			15.0	950	12820 @ 1300	33320 @ 730
TDF-C/900-11.0			11.0	850	11470 @ 1040	29810 @ 580
TDF-C/900-7.5			7.5	750	10120 @ 810	26310 @ 455
TDF-C/900-5.5			5.5	700	9440 @ 710	24550 @ 395



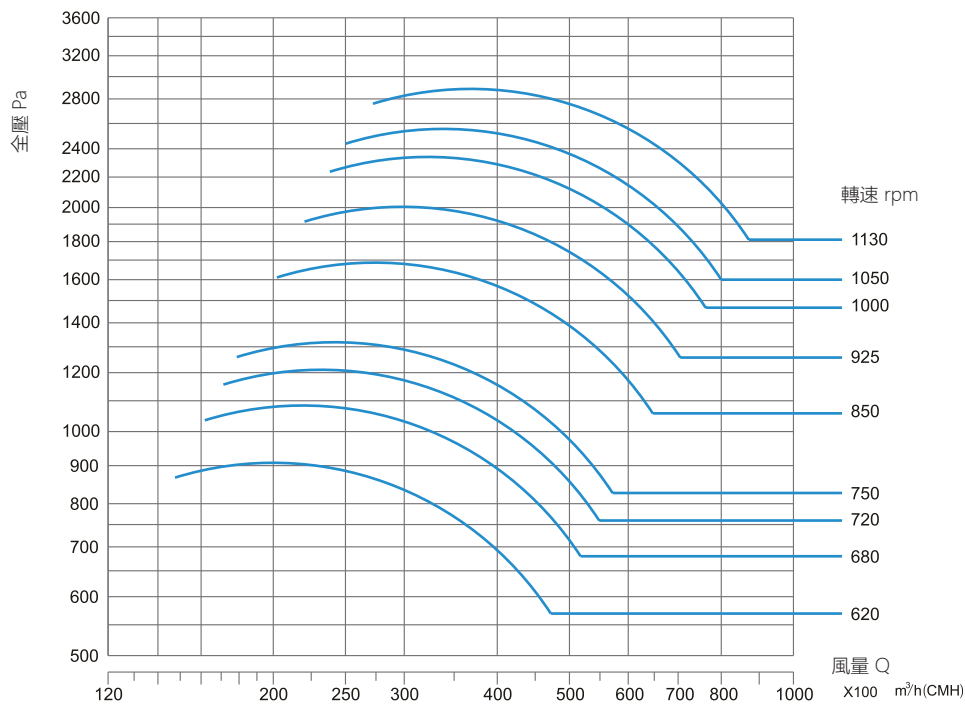
TDF-C/1000



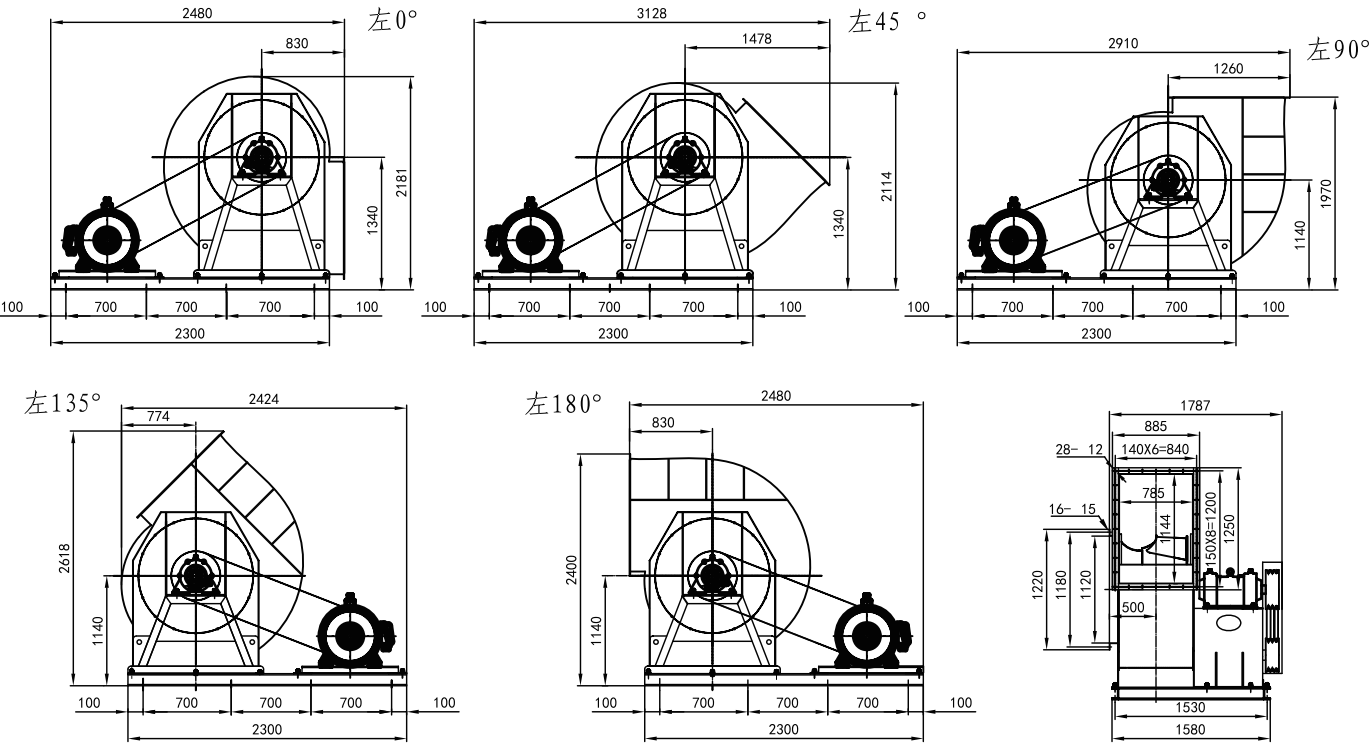
型號 (香港規格)	扇葉直徑 mm	額定電壓 V/Ph/Hz	電機功率 KW	最高轉速 RPM	最低風量@靜壓 m³/h @ Pa	最高風量@靜壓 m³/h @ Pa
TDF-C/1000-55.0	1000	380V/3/50	55.0	1300	24207 @ 2640	62932 @ 1528
TDF-C/1000-45.0			45.0	1200	22414 @ 2400	58271 @ 1389
TDF-C/1000-37.0			37.0	1100	20360 @ 2160	52930 @ 1250
TDF-C/1000-30.0			30.0	1050	19430 @ 1965	50520 @ 1135
TDF-C/1000-22.0			22.0	925	17120 @ 1525	44510 @ 880
TDF-C/1000-18.5			18.5	875	16190 @ 1365	42100 @ 790
TDF-C/1000-15.0			15.0	825	15270 @ 1210	39700 @ 700
TDF-C/1000-11.0			11.0	750	13880 @ 1000	36090 @ 580
TDF-C/1000-7.5			7.5	650	12030 @ 750	31280 @ 435



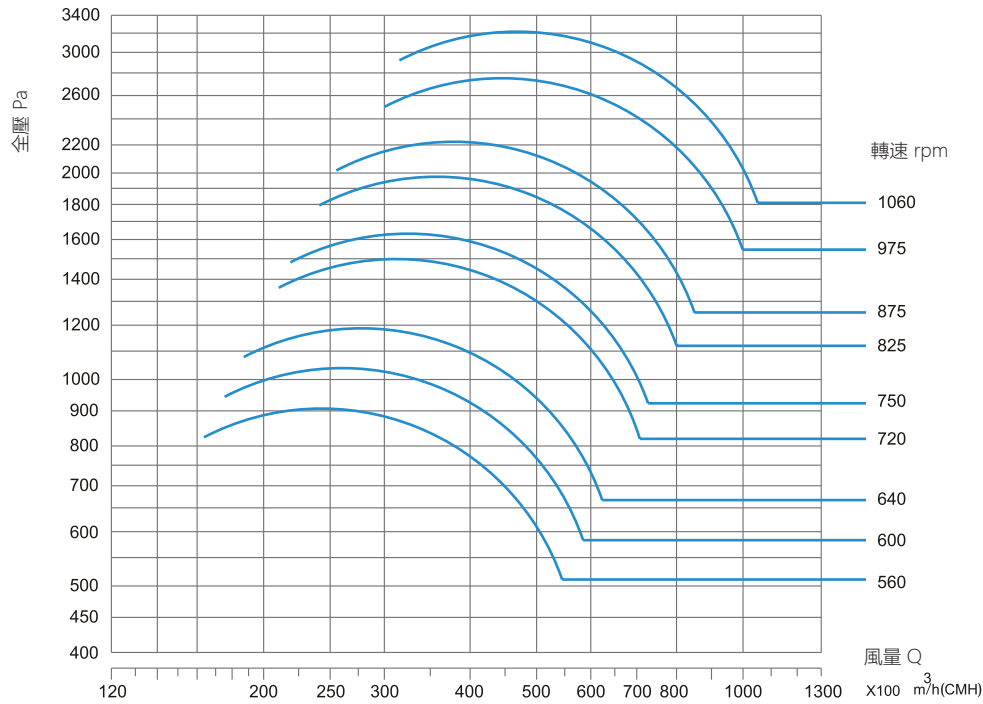
TDF-C/1120



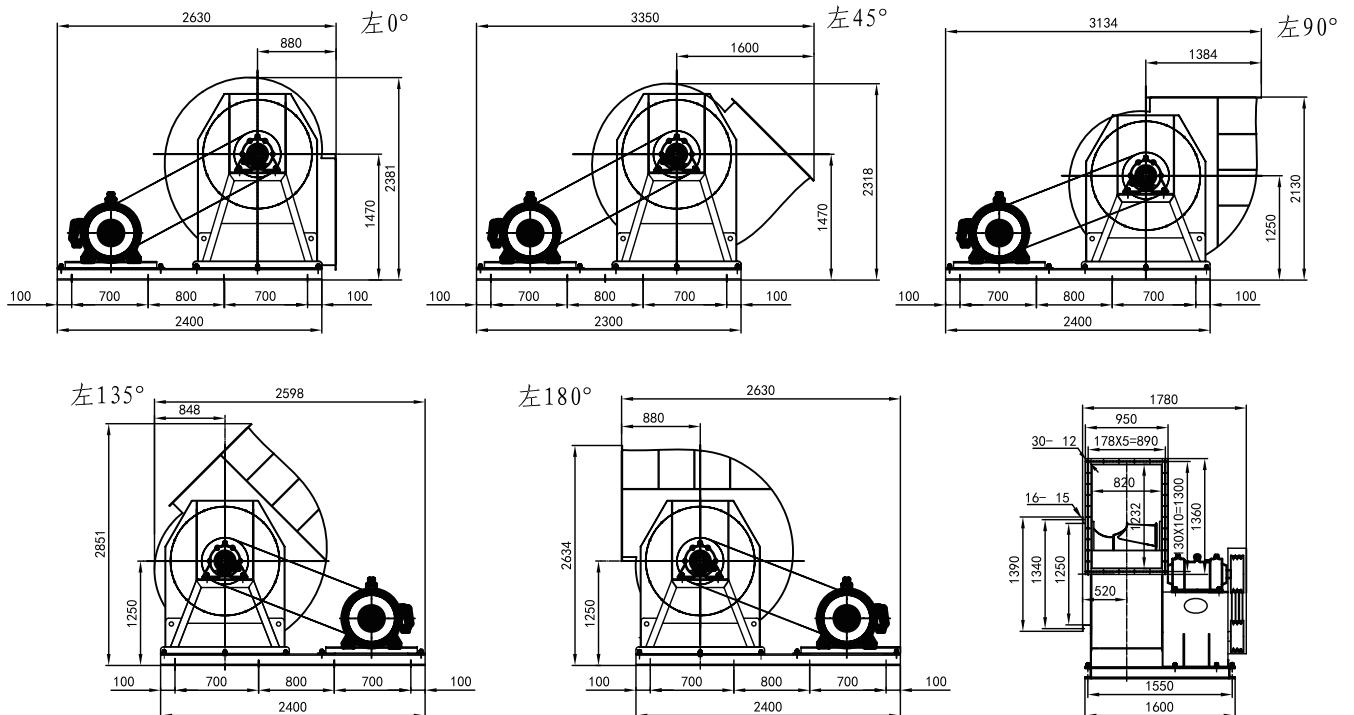
型號 (香港規格)	扇葉直徑 mm	額定電壓 V/Ph/Hz	電機功率 KW	最高轉速 RPM	最低風量@靜壓 m³/h @ Pa	最高風量@靜壓 m³/h @ Pa
TDF-C/1120-55.0	1120	380V/3/50	55.0	1130	29503 @ 2850	43660 @ 2740
TDF-C/1120-75.0			75.0	1130	51928 @ 2614	76708 @ 1652
TDF-C/1120-45.0			45.0	1050	27300 @ 2475	40400 @ 2380
TDF-C/1120-55.0			55.0	1050	48050 @ 2270	70980 @ 1435
TDF-C/1120-37.0			37.0	1000	26000 @ 2245	38480 @ 2160
TDF-C/1120-45.0			45.0	1000	45760 @ 2060	67600 @ 1300
TDF-C/1120-37.0			37.0	925	24050 @ 1920	62530 @ 1115
TDF-C/1120-30.0			30.0	850	22100 @ 1620	57460 @ 940
TDF-C/1120-22.0			22.0	750	19500 @ 1260	50700 @ 730
TDF-C/1120-18.5			18.5	720	18720 @ 1160	48670 @ 675
TDF-C/1120-15.0			15.0	680	17680 @ 1040	45970 @ 600
TDF-C/1120-11.0			11.0	620	16120 @ 860	41910 @ 500



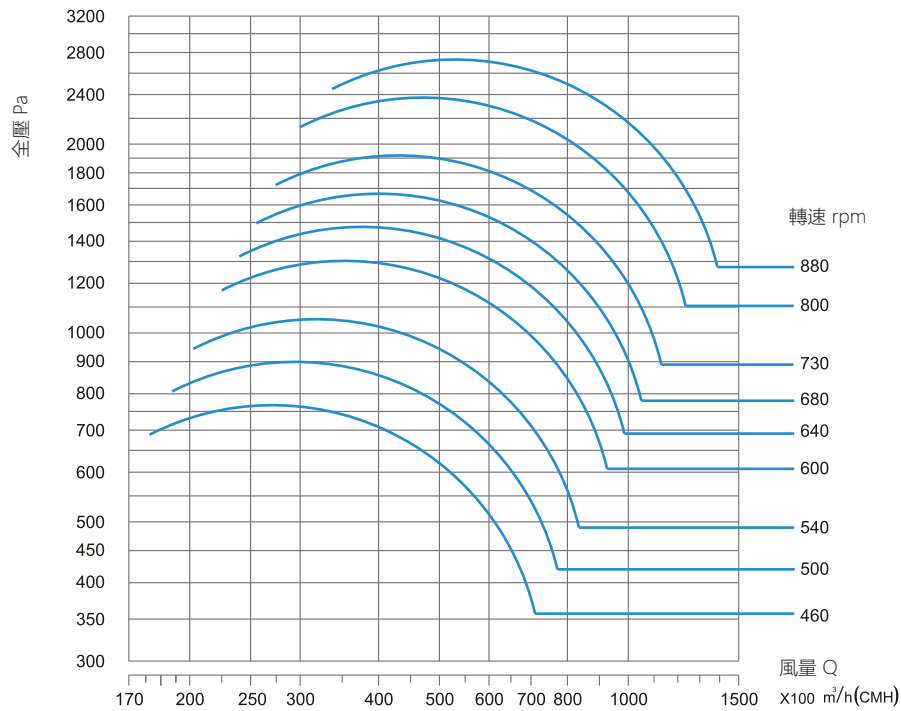
TDF-C/1250



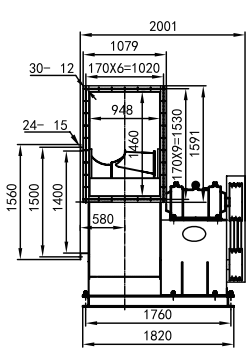
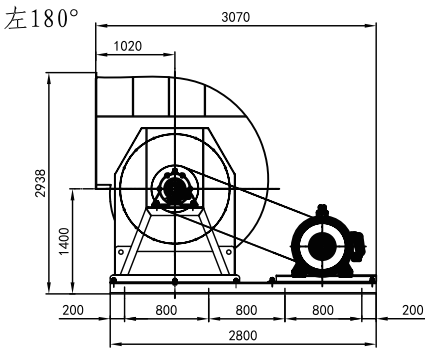
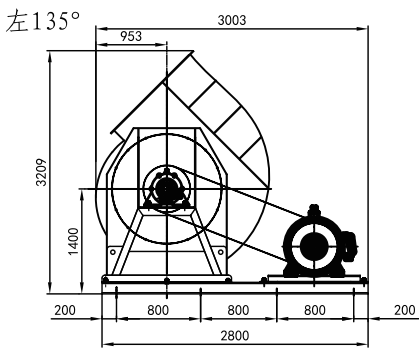
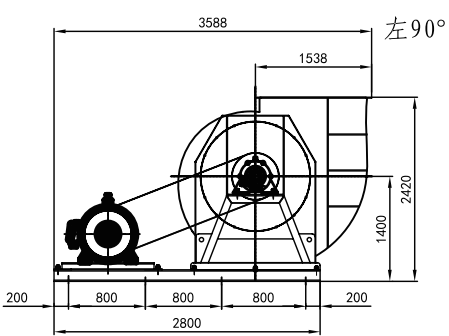
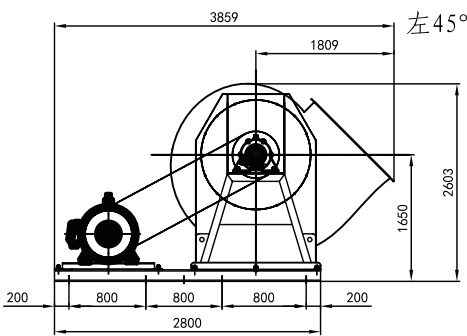
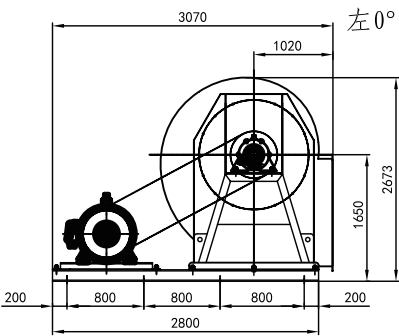
型號 (香港規格)	扇葉直徑 mm	額定電壓 V/Ph/Hz	電機功率 KW	最高轉速 RPM	最低風量@靜壓 m³/h @ Pa	最高風量@靜壓 m³/h @ Pa
TDF-C/1250-75.0	1250	380V/3/50	75.0	1060	38429 @ 2944	56896 @ 2822
TDF-C/1250-90.0			90.0	1060	67651 @ 2678	99939 @ 1650
TDF-C/1250-55.0			55.0	975	35230 @ 2650	52160 @ 2540
TDF-C/1250-75.0			75.0	975	62020 @ 2410	81750 @ 1860
TDF-C/1250-45.0			45.0	975	91620 @ 1485	37950 @ 2125
TDF-C/1250-55.0			55.0	875	46800 @ 2044	82220 @ 1195
TDF-C/1250-37.0			37.0	825	29810 @ 1895	44130 @ 1815
TDF-C/1250-45.0			45.0	825	52475 @ 1730	77520 @ 1060
TDF-C/1250-37.0			37.0	750	27100 @ 1565	70480 @ 880
TDF-C/1250-30.0			30.0	720	26020 @ 1440	67660 @ 810
TDF-C/1250-22.0			22.0	640	23130 @ 1140	60140 @ 640
TDF-C/1250-22.0			22.0	600	21680 @ 1000	56380 @ 560
TDF-C/1250-15.0			15.0	560	20240 @ 870	52620 @ 490



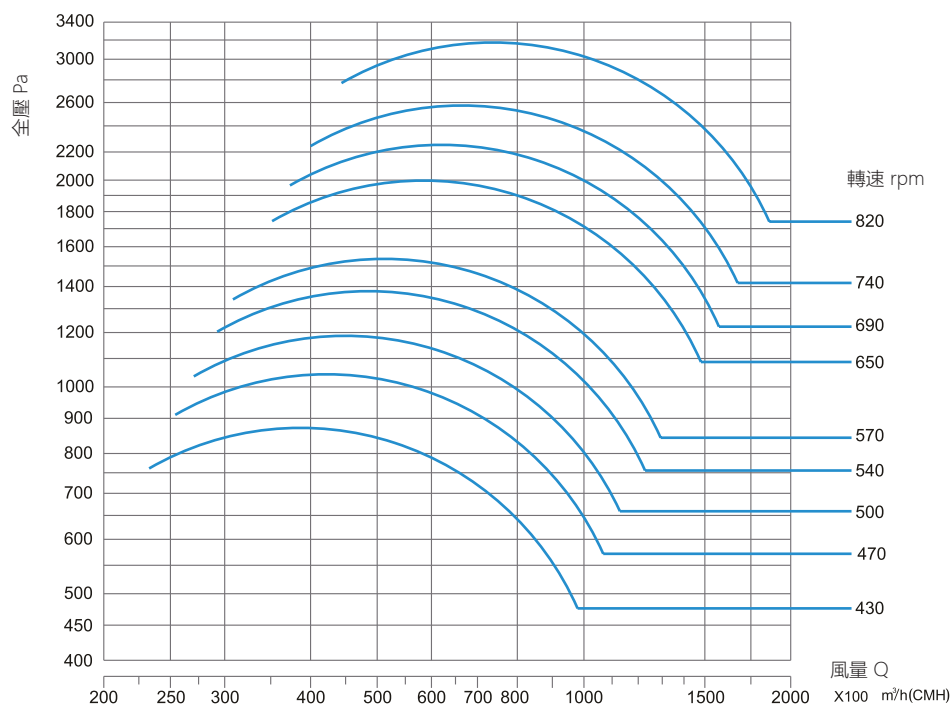
TDF-C/1400



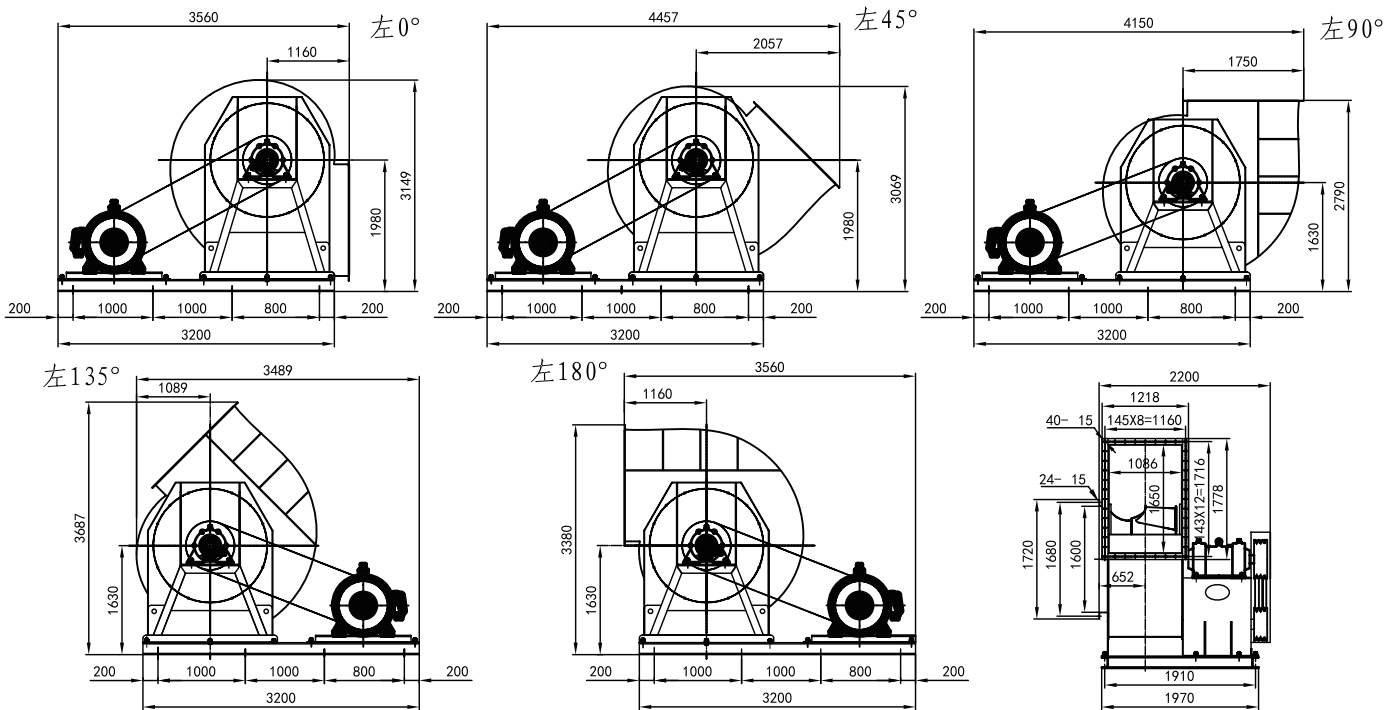
型號 (香港規格)	扇葉直徑 mm	額定電壓 V/Ph/Hz	電機功率 KW	最高轉速 RPM	最低風量@靜壓 m³/h @ Pa	最高風量@靜壓 m³/h @ Pa
TDF-C/1400-75.0	1400	380V/3/50	75.0	880	45129 @ 2744	66793 @ 2642
TDF-C/1400-90.0			90.0	880	79437 @ 2518	117344 @ 1589
TDF-C/1400-55.0			55.0	800	40620 @ 2245	60120 @ 2160
TDF-C/1400-75.0			75.0	800	71500 @ 2060	105620 @ 1300
TDF-C/1400-45.0			45.0	730	37070 @ 1870	54860 @ 1800
TDF-C/1400-55.0			55.0	730	65240 @ 1715	96380 @ 1085
TDF-C/1400-37.0			37.0	680	34530 @ 1620	51100 @ 1560
TDF-C/1400-45.0			45.0	680	60770 @ 1490	89780 @ 940
TDF-C/1400-37.0			37.0	640	32500 @ 1440	84500 @ 835
TDF-C/1400-30.0			30.0	600	30470 @ 1260	79220 @ 730
TDF-C/1400-22.0			22.0	540	27420 @ 1020	71295 @ 590
TDF-C/1400-18.5			18.5	500	25390 @ 875	66010 @ 510
TDF-C/1400-15.0			15.0	460	23360 @ 740	60730 @ 430



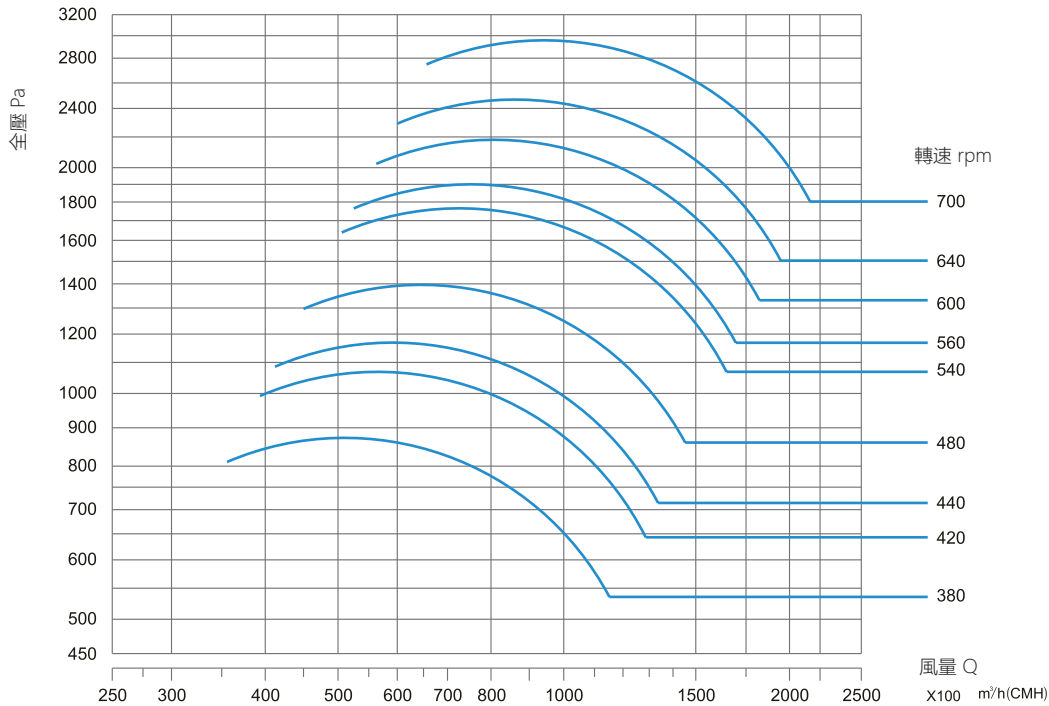
TDF-C/1600



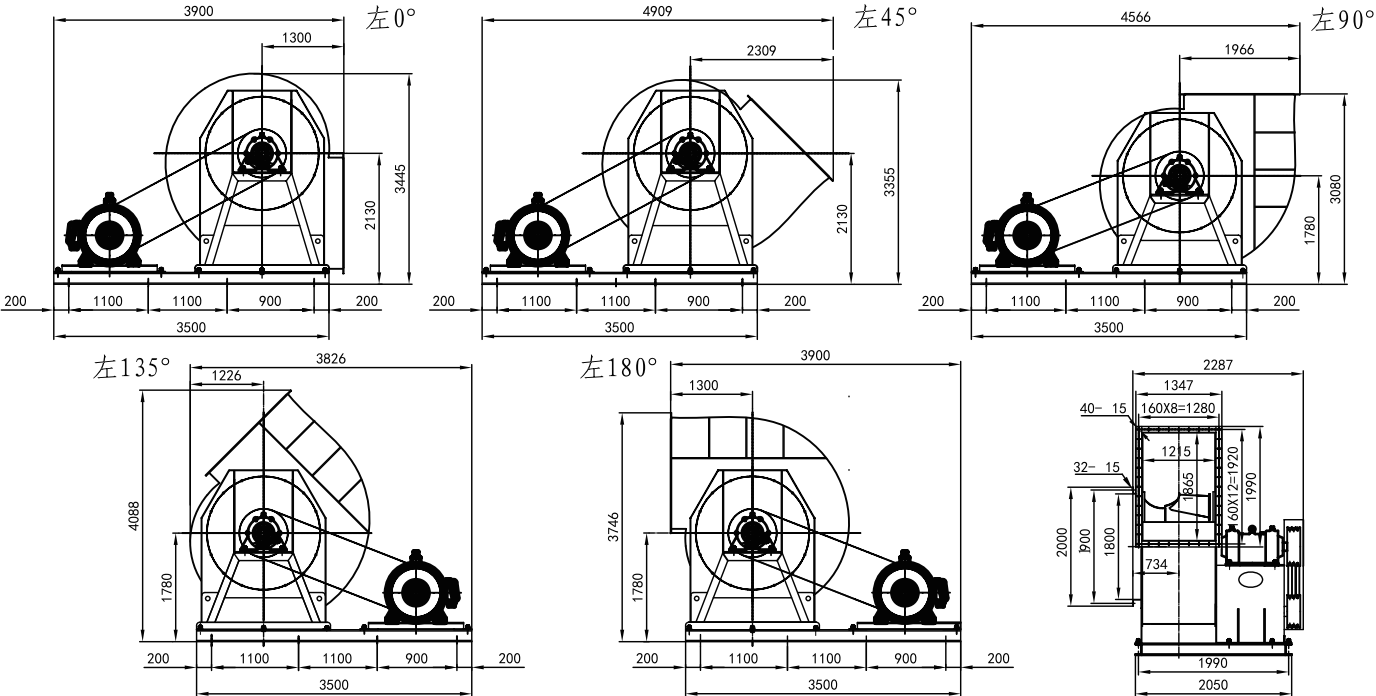
型號 (香港規格)	扇葉直徑 mm	額定電壓 V/Ph/Hz	電機功率 KW	最高轉速 RPM	最低風量@靜壓 m³/h @ Pa	最高風量@靜壓 m³/h @ Pa
TDF-C/1600-110.0	1600	380V/3/50	110.0	820	62315 @ 3067	92235 @ 2951
TDF-C/1600-132.0			132.0	820	109677 @ 2823	162028 @ 1760
TDF-C/1600-90.0			90.0	740	56090 @ 2510	83020 @ 2415
TDF-C/1600-110.0			110.0	740	98720 @ 2310	145840 @ 1440
TDF-C/1600-75.0			75.0	690	52300 @ 2180	77410 @ 2100
TDF-C/1600-90.0			90.0	690	92050 @ 2005	135980 @ 1250
TDF-C/1600-55.0			55.0	650	49270 @ 1935	72920 @ 1860
TDF-C/1600-75.0			75.0	650	86715 @ 1780	128100 @ 1110
TDF-C/1600-45.0			45.0	570	43210 @ 1490	63945 @ 1430
TDF-C/1600-55.0			55.0	570	76040 @ 1370	112330 @ 855
TDF-C/1600-37.0			37.0	540	40930 @ 1335	60580 @ 1285
TDF-C/1600-45.0			45.0	540	72040 @ 1230	106420 @ 770
TDF-C/1600-37.0			37.0	500	37900 @ 1145	98540 @ 660
TDF-C/1600-30.0			30.0	470	35630 @ 1010	92630 @ 580
TDF-C/1600-22.0			22.0	430	32590 @ 845	84740 @ 485

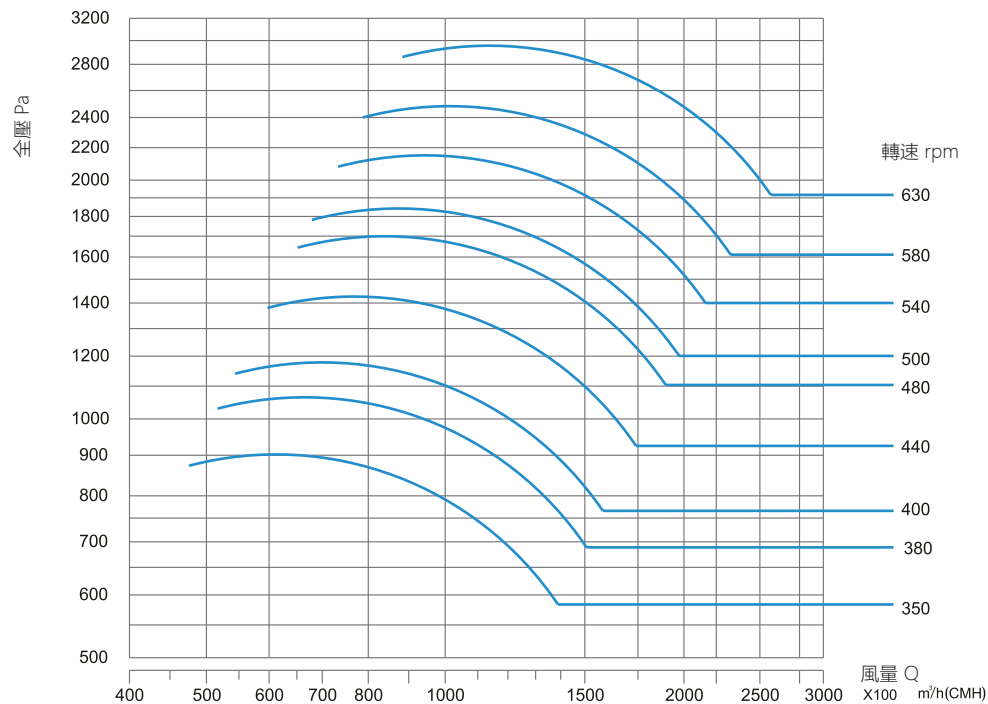


TDF-C/1800

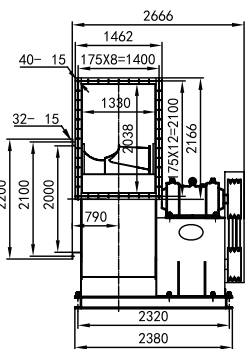
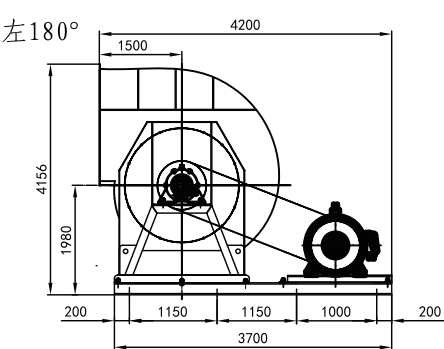
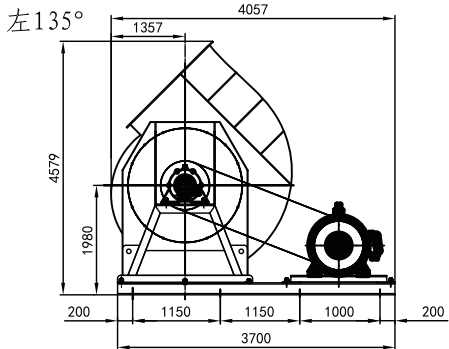
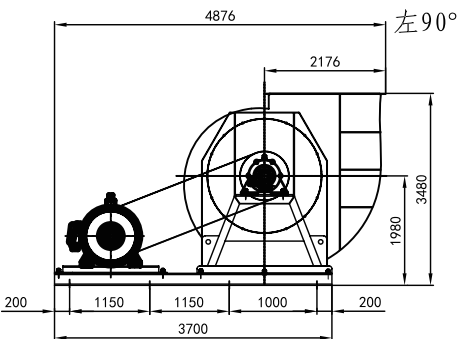
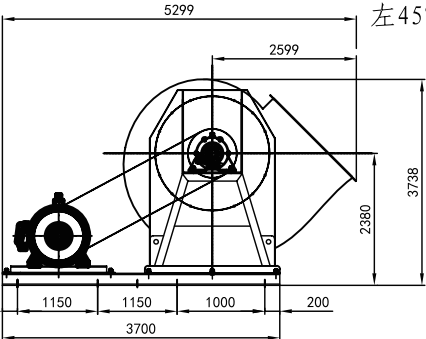
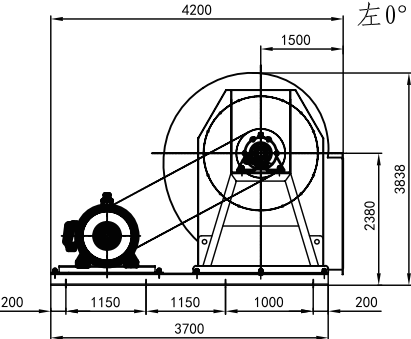


型號 (香港規格)	扇葉直徑 mm	額定電壓 V/Ph/Hz	電機功率 KW	最高轉速 RPM	最低風量@靜壓 m³/h @ Pa	最高風量@靜壓 m³/h @ Pa
TDF-C/1800-132.0	1800	380V/3/50	132.0	700	76050 @ 2627	112545 @ 3533
TDF-C/1800-160.0			160.0	700	133836 @ 2416	197721 @ 1505
TDF-C/1800-110.0			110.0	640	69080 @ 2365	102230 @ 2280
TDF-C/1800-132.0			132.0	640	121570 @ 2175	179600 @ 1355
TDF-C/1800-90.0			90.0	600	64770 @ 2080	95840 @ 2010
TDF-C/1800-110.0			110.0	600	113980 @ 1910	168370 @ 1190
TDF-C/1800-75.0			75.0	560	60450 @ 1810	89450 @ 1750
TDF-C/1800-90.0			90.0	560	106380 @ 1665	157150 @ 1035
TDF-C/1800-55.0			55.0	540	58290 @ 1680	86260 @ 1630
TDF-C/1800-75.0			75.0	540	102580 @ 1545	151530 @ 965
TDF-C/1800-45.0			45.0	480	51810 @ 1330	76670 @ 1285
TDF-C/1800-55.0			55.0	480	91180 @ 1220	134700 @ 760
TDF-C/1800-45.0			45.0	440	47495 @ 1120	123470 @ 640
TDF-C/1800-37.0			37.0	420	45340 @ 1020	117860 @ 580
TDF-C/1800-30.0			30.0	380	41020 @ 830	106635 @ 480



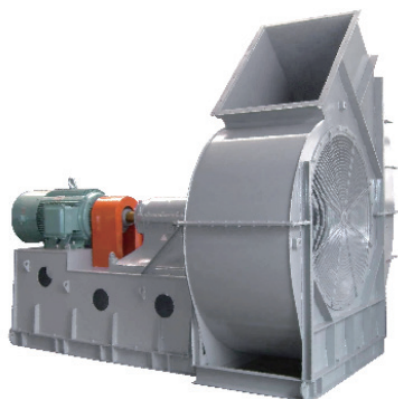


型號 (香港規格)	扇葉直徑 mm	額定電壓 V/Ph/Hz	電機功率 KW	最高轉速 RPM	最低風量@靜壓 m³/h @ Pa	最高風量@靜壓 m³/h @ Pa
TDF-C/2000-160.0	2000	380V/3/50	160.0	630	93675 @ 2666	138627 @ 2566
TDF-C/2000-185.0			185.0	630	164854 @ 2444	243536 @ 1522
TDF-C/2000-132.0			132.0	580	85879 @ 2400	127088 @ 2310
TDF-C/2000-160.0			160.0	580	151132 @ 2200	223264 @ 1370
TDF-C/2000-110.0			110.0	540	79956 @ 2080	118323 @ 2000
TDF-C/2000-132.0			132.0	540	140709 @ 1910	207866 @ 1190
TDF-C/2000-90.0			90.0	500	74034 @ 1780	109559 @ 1720
TDF-C/2000-110.0			110.0	500	130286 @ 1635	192469 @ 1020
TDF-C/2000-75.0			75.0	480	71072 @ 1640	105176 @ 1580
TDF-C/2000-90.0			90.0	480	125075 @ 1510	184770 @ 940
TDF-C/2000-55.0			55.0	440	65150 @ 1380	96412 @ 1330
TDF-C/2000-75.0			75.0	440	114652 @ 1270	169373 @ 790
TDF-C/2000-55.0			55.0	400	59227 @ 1140	153975 @ 650
TDF-C/2000-45.0			45.0	380	56266 @ 1030	146276 @ 590
TDF-C/2000-37.0			37.0	350	51824 @ 870	134728 @ 500



TDF-D 系列后向離心風機

- 備有 400-1600mm 共十三款尺寸。
- 單進風、後彎葉輪、效率和靜壓高。
可拆裝結構，多種角度互換，傳動方式為聯軸器傳動結構。
- 用途：廣泛用於各企業垃圾焚燒、塗裝等場所的通風換氣。

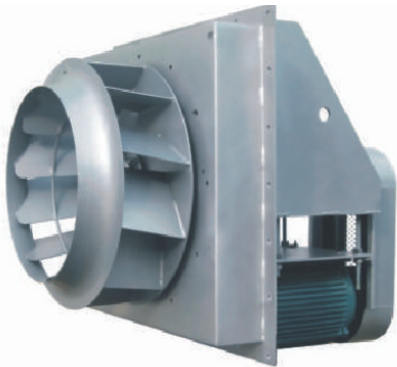


性能參數表

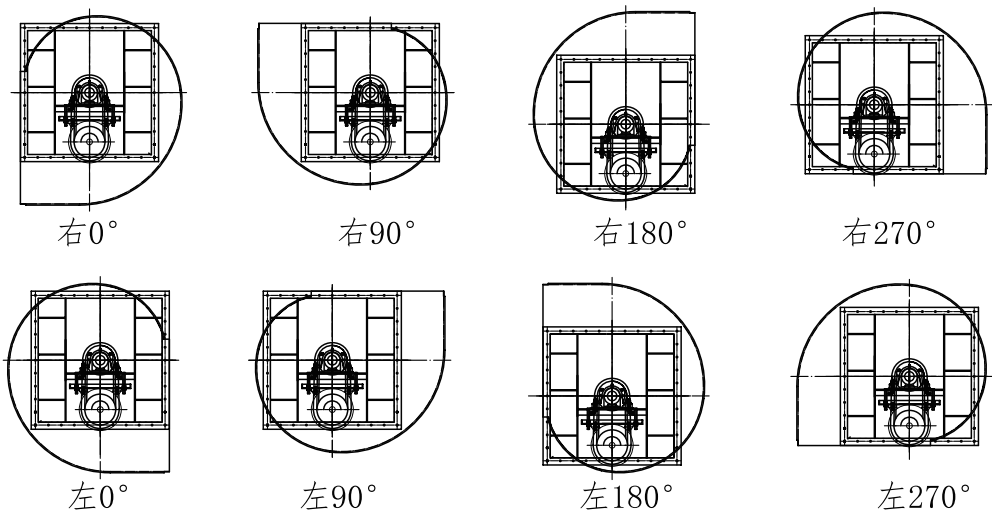
型號 (香港規格)	扇葉直徑 mm	額定電壓 V/Ph/Hz	電機功率 KW	最高轉速 RPM	最低風量@靜壓 m³/h @ Pa	最高風量@靜壓 m³/h @ Pa	最高噪音 dB (A)
TDF-D/400-1.1	400	380V/3/50	1.1	1400	1050 @ 538	4719 @ 174	74
TDF-D/400-5.5			5.5	2900	2175 @ 2306	9774 @ 748	89
TDF-D/450-1.5	450	380V/3/50	1.5	1400	1680 @ 731	7076 @ 228	78
TDF-D/450-11.0			11.0	2900	3516 @ 3199	14809 @ 998	93
TDF-D/500-3.0	500	380V/3/50	3.0	1400	2100 @ 928	9581 @ 302	80
TDF-D/500-18.5			18.5	2900	4333 @ 3950	19769 @ 1287	96
TDF-D/560-1.5	560	380V/3/50	1.5	960	1706 @ 463	7989 @ 191	71
TDF-D/560-5.5			5.5	1450	2625 @ 1088	12291 @ 448	82
TDF-D/630-3.0	630	380V/3/50	3.0	960	2418 @ 645	11815 @ 256	80
TDF-D/630-7.5			7.5	1450	3677 @ 1492	17970 @ 592	90
TDF-D/710-4.0	710	380V/3/50	4.0	960	3150 @ 784	16979 @ 321	82
TDF-D/710-11.0			11.0	1450	4758 @ 1790	25671 @ 734	90
TDF-D/800-11.0	800	380V/3/50	11.0	960	10910 @ 1050	21100 @ 745	82
TDF-D/800-30.0			30.0	1450	16480 @ 2390	31870 @ 1700	90
TDF-D/900-15.0	900	380V/3/50	15.0	960	15540 @ 1330	30050 @ 945	83
TDF-D/900-55.0			55.0	1450	23480 @ 3030	45385 @ 2155	91
TDF-D/1000-11.0	1000	380V/3/50	11.0	720	15990 @ 920	30910 @ 660	84
TDF-D/1000-30.0			30.0	960	21360 @ 1670	41220 @ 1170	92
TDF-D/1120-18.5	1120	380V/3/50	18.5	720	22460 @ 1160	43430 @ 830	85
TDF-D/1120-45.0			45.0	960	29950 @ 2060	57910 @ 1480	93
TDF-D/1250-30.0	1250	380V/3/50	30.0	720	31230 @ 1440	60370 @ 1010	84
TDF-D/1250-75.0			75.0	960	52160 @ 2540	91620 @ 1485	92
TDF-D/1400-55.0	1400	380V/3/50	55.0	720	36560 @ 1820	95060 @ 1060	95
TDF-D/1600-110.0	1600	380V/3/50	110.0	720	54580 @ 2370	141895 @ 1365	96

TDF-GC 系列高溫度插入式離心風機

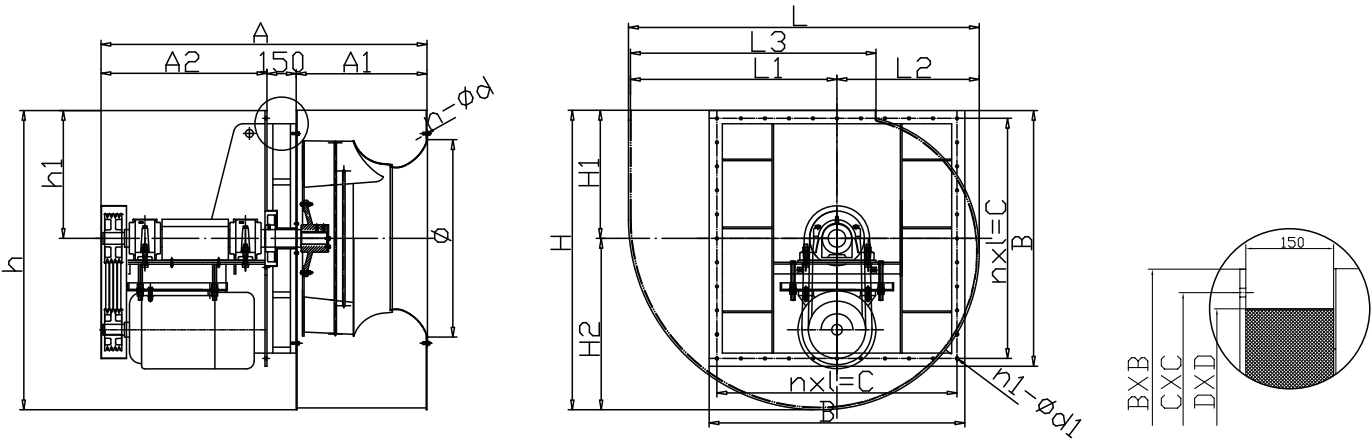
- 備有 400-1000mm 共九款尺寸（參數和TDF-C相同）。
- 單進風、後彎葉輪、效率和靜壓高。
可拆裝結構，多種角度互換，傳動方式為C式結構。
- 用途：用於各類高溫烘烤爐、乾燥爐以及高溫氣體設備的熱風循環。



■ TDF-GC 風機的旋轉方向及出風口角度



■ TDF-GC 風機安裝尺寸 (mm)



型號	A	A1	A2	φ	n-φd	L	L1	L2	L3	H	H1	H2	h	h1	nxl=C	B	D	n1-d1	重量 (kg)
400	1014	277	585	418	8-φ12	744	432	302	506	653	289	364	651	288	106X5=530	575	485	20-φ12	150
450	1044	305	587	464	8-φ12	836	486	340	568	731	321	410	728	318	118X5=590	635	545	20-φ12	220
500	1087	348	586	515	8-φ12	930	540	380	645	804	350	454	804	350	131X5=655	700	610	20-φ12	280
560	1251	395	704	578	8-φ12	1032	601	421	710	894	390	504	886	382	120X6=720	763	677	24-φ12	340
630	1291	435	704	647	8-φ15	1158	677	471	796	999	433	566	989	423	133.5X6=801	846	756	24-φ12	380
710	1437	482	802	724	12-φ15	1283	754	520	875	1129	500	629	1109	480	151X6=906	960	850	24-φ12	640
800	1493	538	802	814	12-φ15	1464	857	597	996	1249	540	709	1238	529	123.5X8=1004	1058	950	32-φ15	710
900	1600	600	850	966	12-φ15	1636	963	663	1122	1399	604	795	1395	600	8X140=1120	1200	1062	32-φ15	880
1000	1670	670	850	1074	12-φ15	1797	1058	729	1258	1533	656	877	1533	655	10X230=1230	1310	1175	45-φ15	1000