

MP-260 MANUAL

Version: 1.2

Model: MP-260-B1

2020-7

CONTENTS

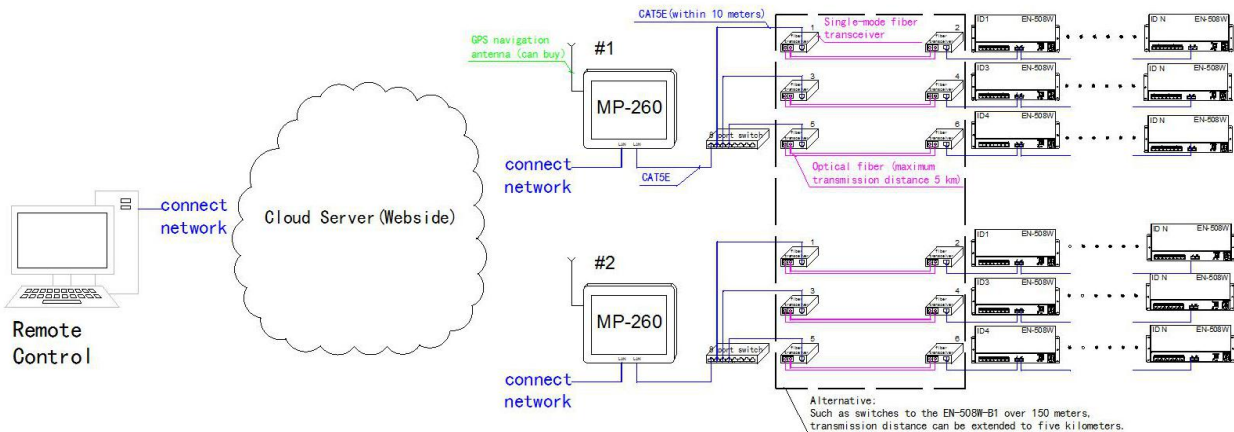
1 FUNCTIONS OVERVIEW.....	1
2 TECHNICAL PARAMETER.....	1
3 PORT INSTRUCTIONS.....	2
4 INTERFACE SPECIFICATION.....	2
5 OPERATION INSTRUCTIONS.....	3
5.1 PLAYLIST.....	3
5.2 TIME CONTROL EDITOR.....	3
5.2.1 INTRODUCE.....	3
5.2.2 TIME-CONTROLLED EDITING.....	4
5.3 MENU SETTINGS.....	5
5.3.1 BRIGHTNESS.....	5
5.3.2 GAMMA.....	5
5.3.3 FRAME.....	5
5.3.4 SENSITIVITY.....	5
5.3.5 NIC SETTING.....	5
6 VOICE CONTROL AND AUDIO CONTROL.....	6
6.1 VOICE CONTROL MODE.....	6
6.1.1 EXTERNAL EQUIPMENT (LINE INPUT).....	6
6.1.2 COMPUTER PLAYS MUSIC BY ITSELF.....	7
6.1.3 LEDPLAYER PLAYS MUSIC BY ITSELF.....	8
6.2 VOICE CONTROL.....	8
7 SYNCHRONIZATION.....	9
7.1 SYNCHRONOUS MODULE CONNECTION.....	9
7.2 LED PLAYER SETTINGS.....	9
8 REMOTE COMPUTER SETTINGS.....	10
8.1 SET UP REMOTE COMPUTER IP.....	10
8.2 REMOTE CONNECTION.....	11

1 FUNCTIONS OVERVIEW

MP-260 is a built-in 10 inch resistive touch screen industrial computer, pre-installed WINDOWS 7 ultimate, equipped with double Gigabit in the card.


Can be directly through the Ethernet cable output signal to Ethernet controller, and then control the lamps and lanterns.

The machine operation method is the same way as in use of home computers. MP - 260 as the master of LED control system, cooperate EN508, EN408 accused of spreading, cloud point, etc.



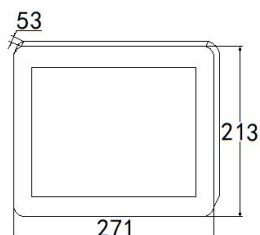
2 TECHNICAL PARAMETER

Input voltage	Adapter input voltage AC100V-240V Small host work input voltage DC12V
Storage temperature	-20℃～60℃
Store humidity	10%～80%
Operating temperature	-10℃～60℃
Operating humidity	10%～70%
Protection grade	IP0 (Dustproof、Waterproof)
System configuration	Please install it in a dry indoor environment. Avoid dust, dampness and rain.
Product weight	2.3kg
hardware configuration	CPU J1900, Memory 2G, WIN7, 64G SSD solid state disk Professional Lighting Broadcasting Software LEDplayer Built-in high precision touch screen, 10 inches

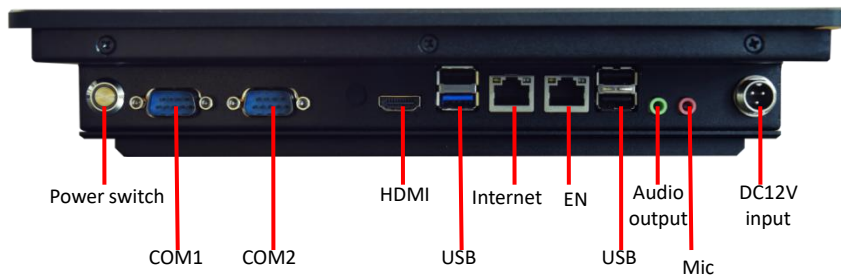
Accessories  (National standard 3 plug the power adapter) ×1, Touch pen×1

Size 271*213*53mm

Unit mm



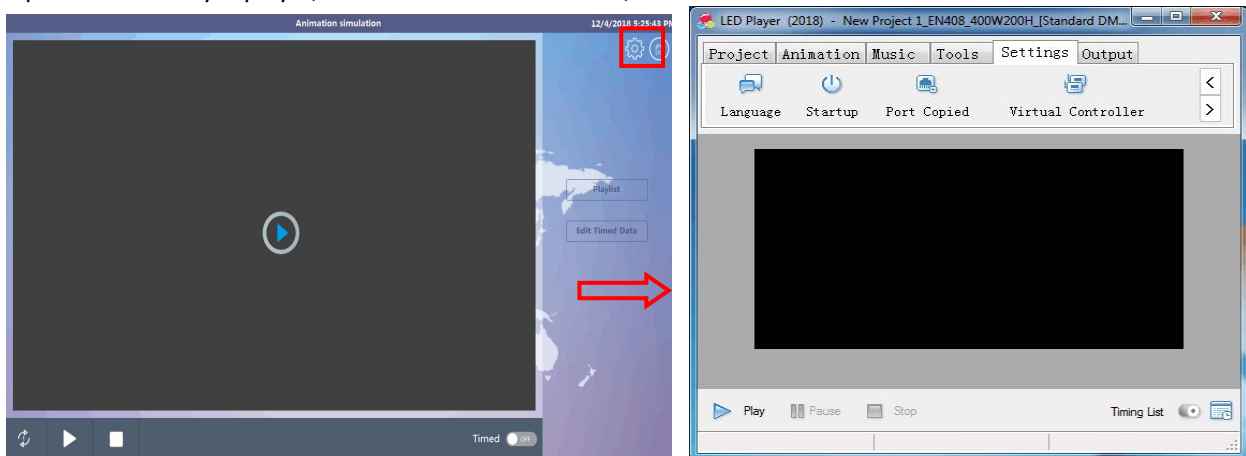
3 PORT INSTRUCTIONS



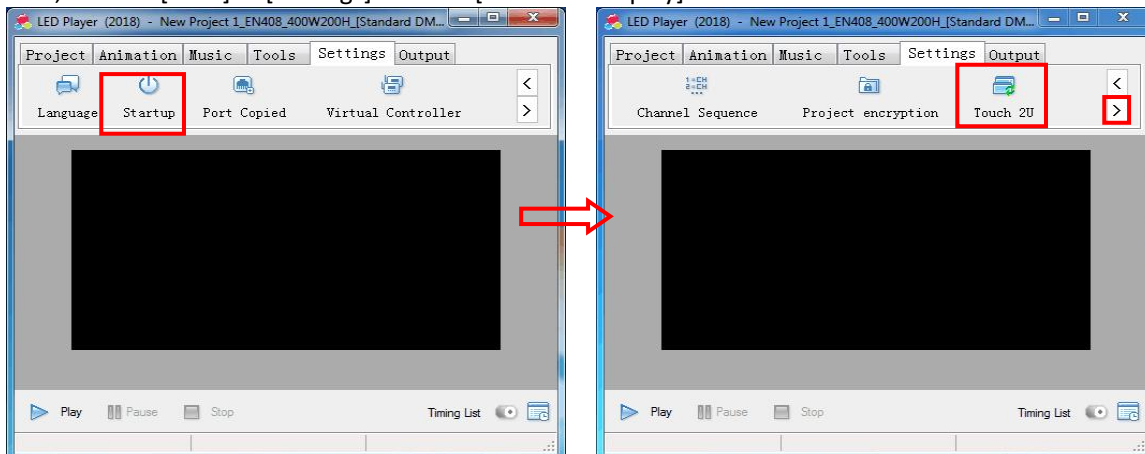
port	Function description
Power switch	Click to start or shut down, Lighting blue if power on.
COM1	N/A.
COM2	External synchronization module can realize synchronous change effect of multiple LED Player.
HDMI	Multimedia Interface, External Computer Display.
USB	Support USB keyboard, mouse and other peripherals.
Internet	Combined with LED PLAYER to achieve cloud control
OUT-EN	External EN508/EN408 and other control
Audio output	combined with LED Player, can achieve simultaneous playing of lighting effect and music.
MIC	combined with LED Player, can realize the sound control mode of LED control system.
DC12V	DC12V input.

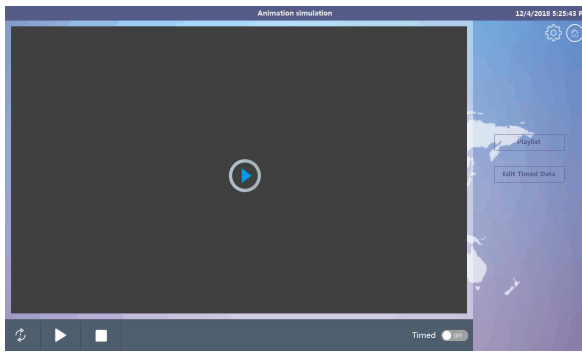
4 INTERFACE SPECIFICATION

Open the LED Player player, default Touch 2U interface, and click back to the main interface as follows.



First, click on [Start] in [Settings] to check [Touch 2U Display].





Icon	Commentary
	Click on Enter to see the current pattern effectvoice control/audio control
	Setting specific time for playback effect
	Click to enter the settings interface (language, brightness, gamma, sensitivity, system frame rate, network card settings)
	Return to main interface
	Effect single-loop playback/effect multiple-loop playback
	Start time control function

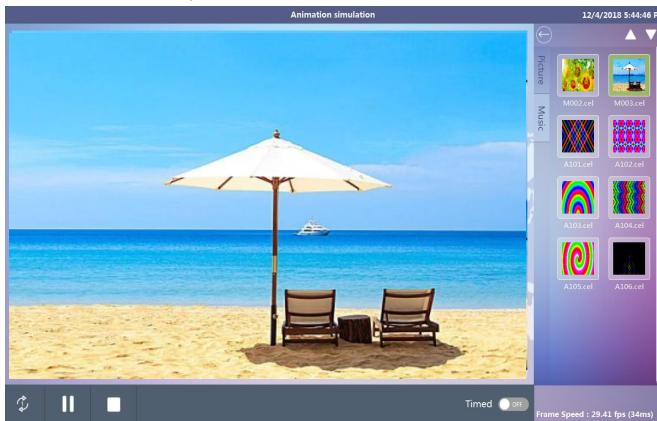
Tips:

The touch screen of this small host is a resistance screen. Please pay attention to the operation specifications and avoid touching by mistake

5 OPERATION INSTRUCTIONS

5.1 PLAYLIST

Click on the [Playlist] of the Point Control Screen to enter the interface to change the playback effect.

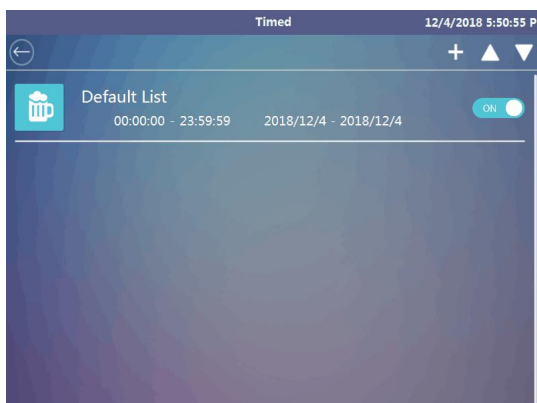


1. Click on the [Playlist] to enter the settings interface to change the effect of playback.
2. Enter "picture" or "music" effect list, click on any effect can change control effect at will.
3. click or to turn to the previous page or the next page.
4. After completing the selection effect, click , return to Touch 2U interface.

5.2 TIME CONTROL EDITOR


5.2.1 INTRODUCE

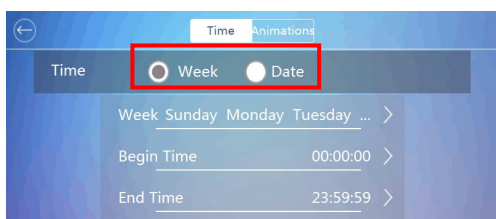
Click on the [time-controlled editing] interface and enter the settings interface for specific time to play.





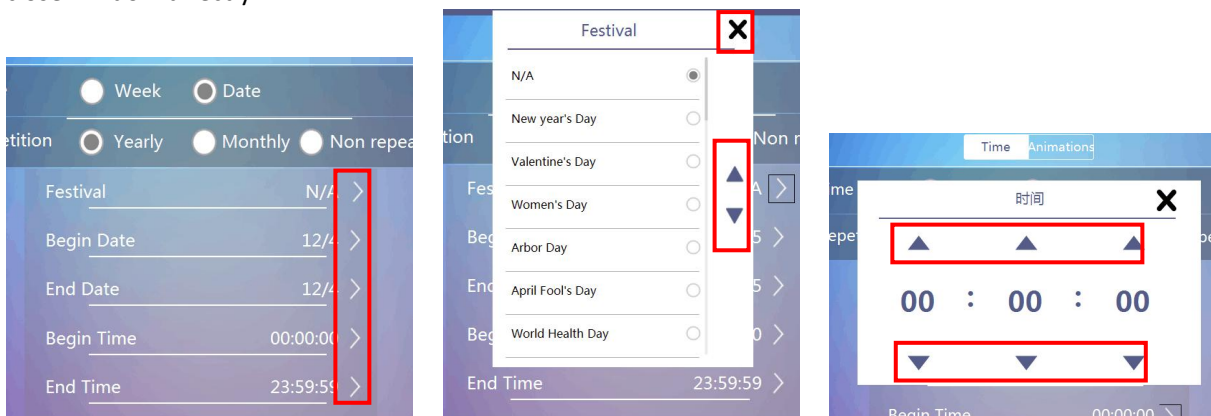
Icon	Commentary
	Flip over.
	Delete the list.
	Start the list that the list effect can be played in a set time.
	Add a new list.
	Return to Touch 2U interface.

5.2.2 TIME-CONTROLLED EDITING


1. Click on the icon  before the [date] of the [week] to select the corresponding time setting.




2. Click on the icon  and set it in the pop-up window. After setting up (that is, saving data in real time), click the  close window directly.

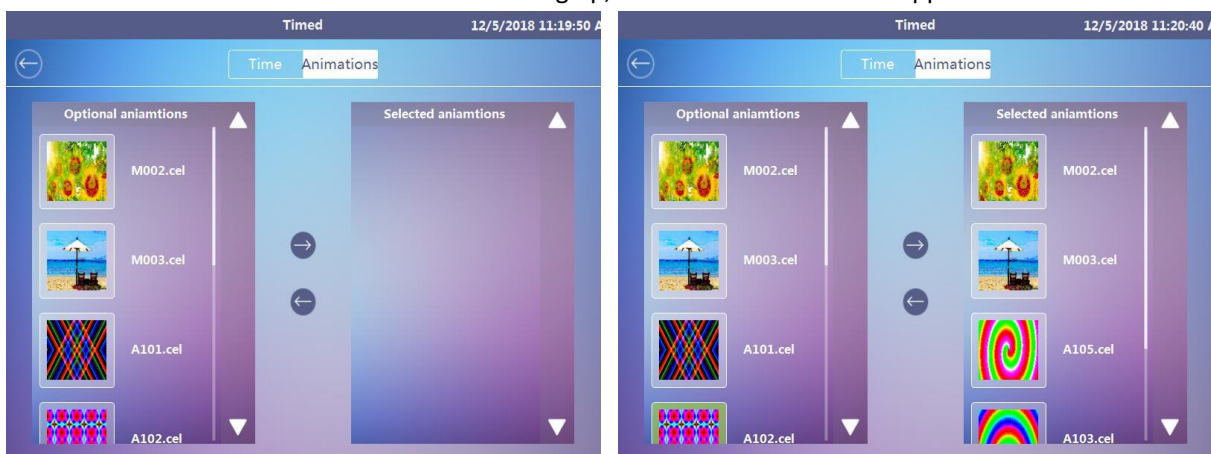


3. Click on the [effect] and enter the interface.

In the [Optional Effects] area, click on the effects that need to be added, such as M002 effect, and click  add to the [Selected Effects] area.

If you want to delete, click  Remove from Selected Effects.



The software saves data in real time. After setting up, click the icon  in the upper left corner to exit.



Notice:

The playback order of the new list follows the order of time; if the same time period occurs, it is judged that the playback is only from the top of the sequence table, and the others are ignored.



5.3 MENU SETTINGS

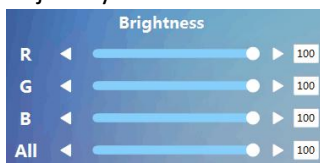
Click on the point control screen  to enter the settings interface; click on  of the top left corner, that is, return to the main boundary.

By clicking on the corresponding function bar and entering the settings interface of the function, **all functions are set up in real time and effective, and don't need to save.**



5.3.1 BRIGHTNESS

Adjust by click  or . 0 is the darkest and 100 is the brightest.



5.3.2 GAMMA

Adjust by click  or .



5.3.3 FRAME

Adjust by click  or .



5.3.4 SENSITIVITY

Adjust by click  or .



5.3.5 NIC SETTING

Select the appropriate network card, click to set up valid. (Note: N/A means no network card is selected.)



6 VOICE CONTROL AND AUDIO CONTROL

At the same time, it has voice control function and audio control function (the setting of spectrum/motion sound control is the same, and can only be used in one of two choices).

Choose the "voice control" / "audio control" control type by clicking on the "control type". The effect of voice control or voice control is the same.

The effect of audio control or voice control is the same (.yel/.yin (spectrum) or emel, smel, bmel, cmel) format. The number of effects of both can be modified according to customers' own needs.

	Effect	Explain
spectrum	High and low jump	According to the length of the output effect of the high and low volume of the sound source, the length of the low volume output is short, and the length of the high volume output is long.
Dynamic	Draw frames	According to the volume of the source, Lower volume extraction front, higher volume extraction back. Suggestions for effect: from small to large diffusion / from large to small contraction / up and down jump / left and right jump. (Such as, the whole process of fireworks explosion from small to large.)
	Frame skip	According to the volume of each sound source before and after the change of 0.5 to 5 times (if the volume difference of the whole song is small, then the change is not obvious), The effect of the suggestion: similar to the windmill effect is recommended to connect the beginning and the end to make coherence.
	brightness	According to the light and shade of the output effect depending on the volume of the source it is black when there is no volume output.

6.1 VOICE CONTROL MODE

6.1.1 EXTERNAL EQUIPMENT (LINE INPUT)

Connect the small host with the audio line of the external audio equipment correctly, and the small host will output the corresponding effect according to the input volume.

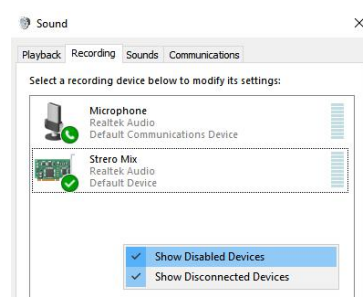
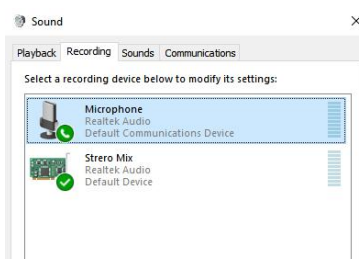
A computer playing music

Open LEDPlayer Controller Lamp

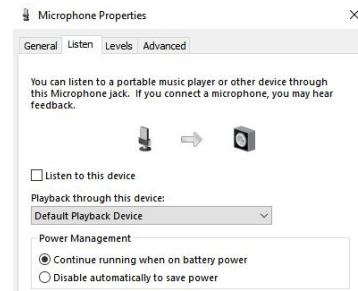
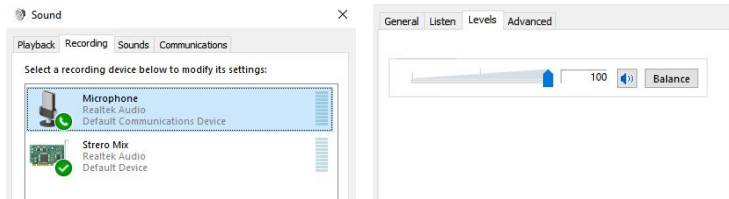


Tips: External audio devices (such as: MP3, CL, computer, mobile phone, multimedia console and tuner, etc, are prohibited from connecting power amplifiers.)

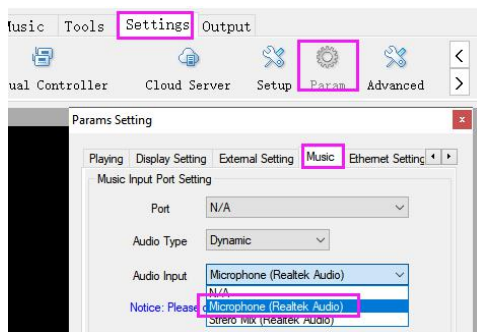
1. Connect the line, then turn on "Microphone". Right-click the computer to set the volume icon and click on "Recording Equipment"



2. Set the volume. It is recommended to set it to the maximum. 3. Uncheck "Listen for this device"
- Right-click "Microphone", "Properties" and "Level".



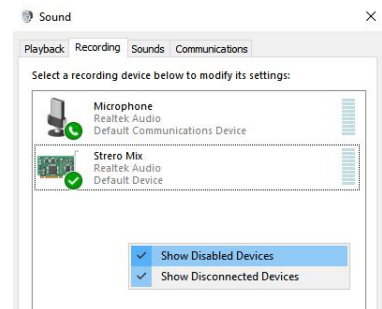
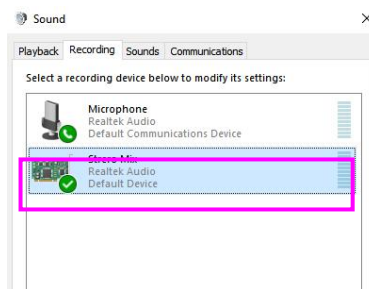
4. Open the player, and set Microphone.



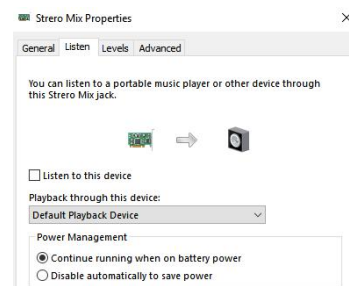
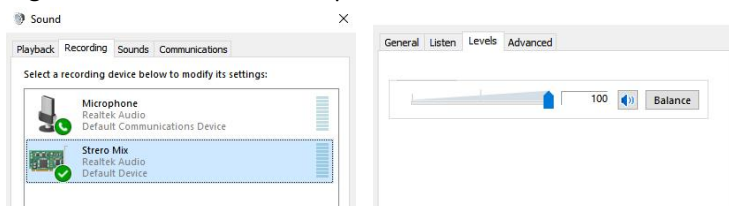
6.1.2 COMPUTER PLAYS MUSIC BY ITSELF

Open any audio player on the small host (such as Groove music player, etc.) and play the audio. The small host will output the corresponding effect according to the volume input.

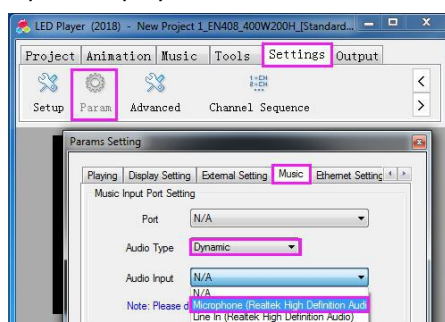
1. Enable stereo mixing: right-click the computer to set the volume icon and click on the "recording device";



2. Set the volume. It is recommended to set it to the maximum. 3. Uncheck "Listen for this device"
- Right-click "Stereo Mix", "Properties" and "Level".

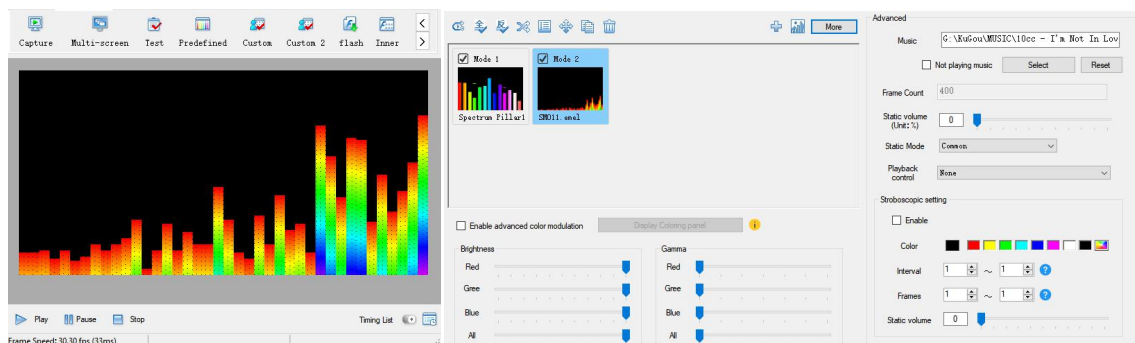


4. Open the player and select "Stereo Mix" for sound input.



6.1.3 LEDPLAYER PLAYS MUSIC BY ITSELF

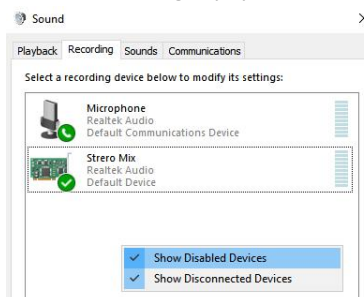
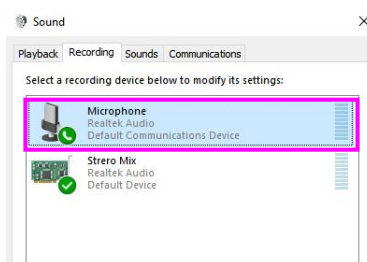
Open the [animation] -playback] in the LED Player, click [more] - [select music] in the list, the sound control effect will follow the corresponding effect of music playback display after the selection of music.



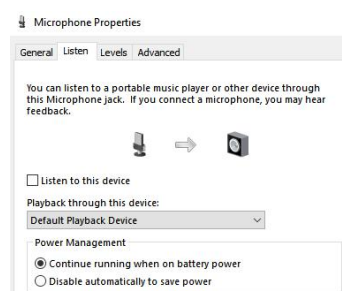
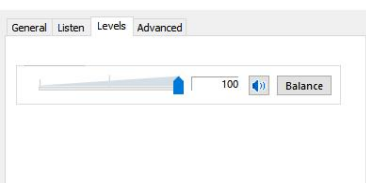
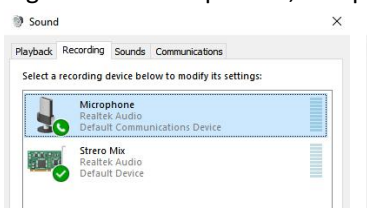
6.2 VOICE CONTROL

Connect the small host with the microphone correctly and output the corresponding effect according to the input volume.

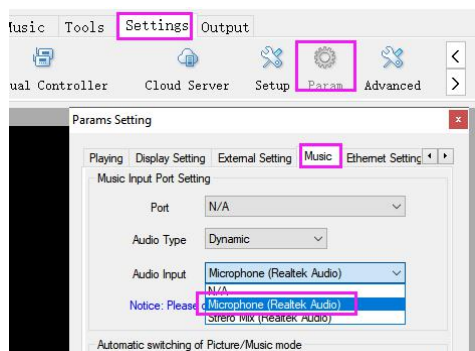
1. Connect microphone equipment to computer
2. Enable "Microphone", right-click the computer to set the volume icon, and click "Recording Equipment"



3. Set the volume. It is recommended to set it to the maximum.
 4. Uncheck "Listen for this device"
- Right-click "Microphone", "Properties" and "Level".



5. Open the LED Player and select "Microphone" for Source Input

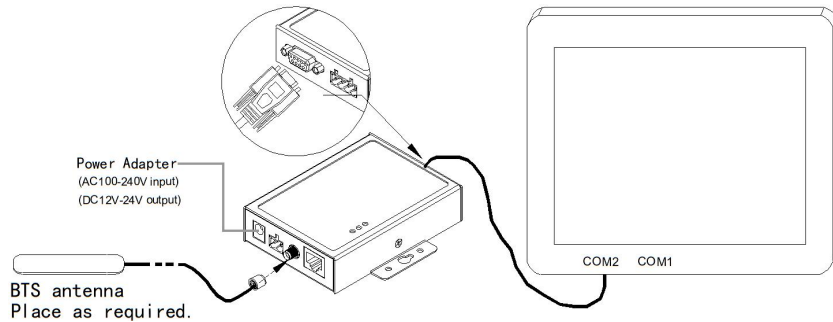


7 SYNCHRONIZATION

7.1 SYNCHRONOUS MODULE CONNECTION

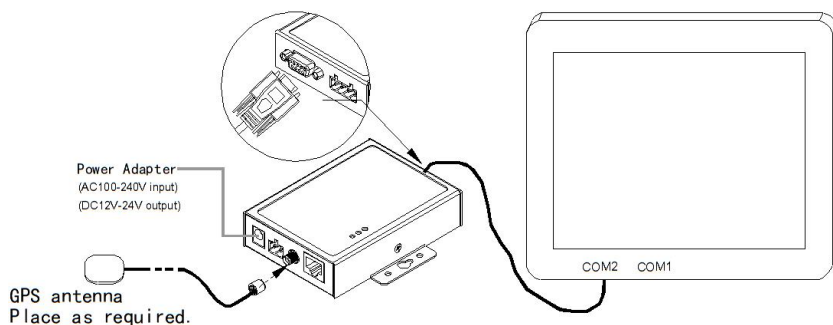
Our company is equipped with synchronous line length of 3 meters, customers can purchase antenna according to the requirements of the project site environment. **The longer the line is, the more difficult it is to search for stars.**

Connect the module with the controller and place the antenna outdoors according to the following requirements.



GSM(2G) signal antenna.

- A) As far as possible, BTS antenna should be placed high and close to outdoor open space.
- B) Be as close as possible to the same CDMA communication base stations.
- C) Applicable to China only.



Standard SMA interface GPS navigation antenna.

- A) GPS antenna shall be installed at a pitch Angle of 30 degrees without large shielding objects.
- B) It is Installed close to the equator.
- C) Should not be installed near other transmitting and receiving devices.

7.2 LED PLAYER SETTINGS

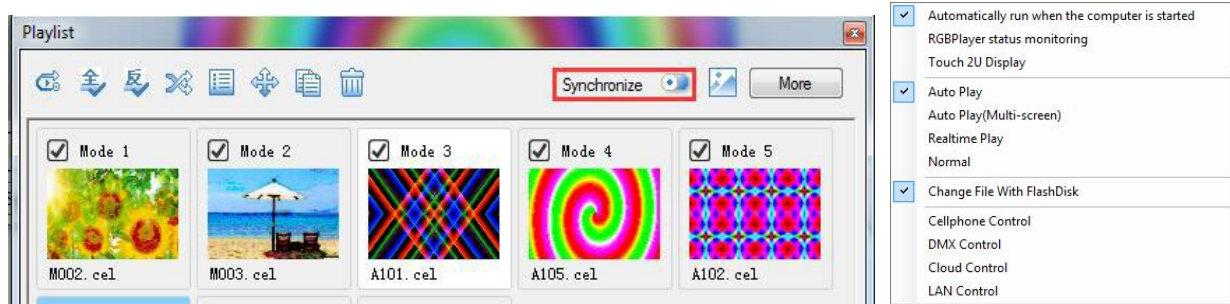
Manually start up and set up synchronization + the same playing speed for several small hosts, and collect satellite signals through external function boxes. When the satellite signals reach more than four stars, that is to say it realize synchronization work for several small hosts

Our company has set up corresponding ports before shipment. Please don't change them at will to avoid mistakes. When inserting and unplugging the GPS antenna, please turn off all the hardware before operating, so as to avoid burning the synchronization module.



Click on [Play] to open synchronization function under playlist.

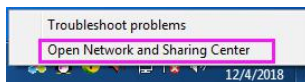
Click [settings] under [start], select “Automatically run when Windows is started” and “Auto Play”.



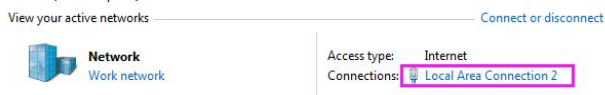
8 REMOTE COMPUTER SETTINGS

8.1 SET UP REMOTE COMPUTER IP

1. Click and enter network and sharing center.

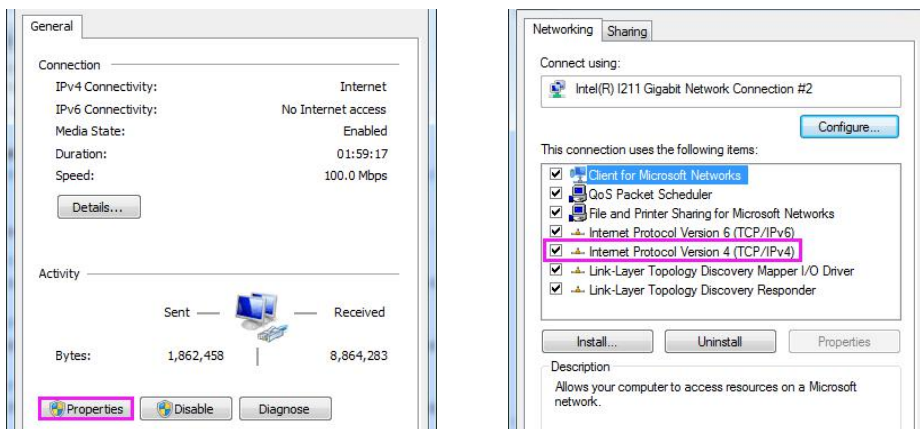


2. Click on the network card that is not connected to the network.

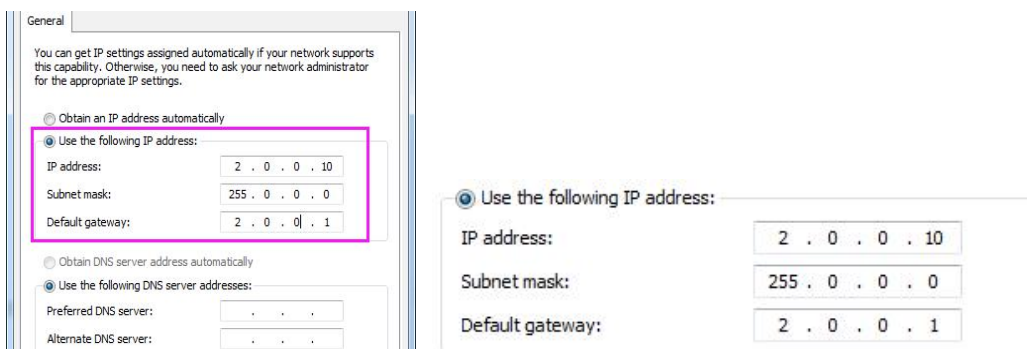


3. In the pop-up "status" dialog window, click on [properties]


Under the "Properties" dialog window that pops up, double-click[[Internet Protocol Version 4 (TCP/IPv4)].

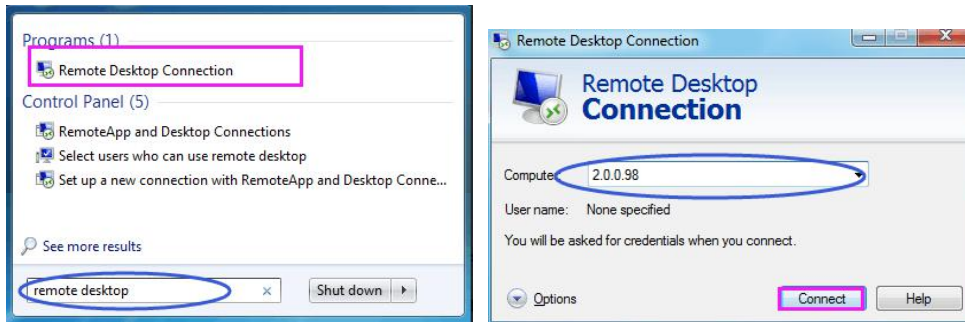


4. Set the IP address of the network card as shown below and click [OK.]



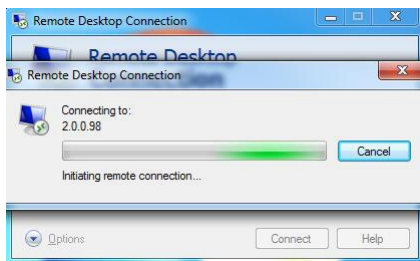
8.2 REMOTE CONNECTION


1. Click on the  of the bottom left corner of the desktop to start, enter[ENTER] on the keypad after[Remote Desktop] in the box, and select the option of[Remote Desktop Connection].
Enter the IP address of MP260 (2.0.0.98) in the pop-up window of [Remote Desktop Connection]



In the pop-up "Windows Security" window, (MP260 is not used in secret) , click [ENTER] go straight to the next step

2. After waiting for a period of time, click on the[YES] of the pop-up inquiry box and you can successfully enter the remote in a few moments.



3. When entering the remote, prompt the "incorrect username or password" information, and click [OK] directly to skip.
4. Click on [Admin] in the Welcome Interface and [Admin] in the Welcome Interface In the "Enter Password Window" that jumps out, click the  icon directly, and you can enter the desktop of MP260 remotely.

