



H&Q=High Quality

HQ-MX3 Multi-functional Hand-held Smart Coder(Single color):

Parameter:

- *Processor: four-core processor, main frequency up to 1.4 GHz;
- *Operating system:Linuxs Operating system;
- *Printing height:12.7mm/25.4mm,two sizes optional;
- *Anytime changes of the content;
- *Can store multiple content;
- *Update batch date in real time;
- * Free Content Editing;
- *Waterproof and fire resistant, can't wipe it;
- *Hand-held/ pipeline TWO USES;
- *4.3-inch HD color touch screen, A-Z 26



letters typing input content, with a stronger RAM kernel, more intelligent operating system;

*It could print numbers,Chinese letters,English letters, Serial number,QR Code, Variable data,Picture LOGO;

*This coder suitable for all kinds of plane materials, such as: wood, carton, plastic, metal, stone, stainless steel, woven bags and so on;

*Seven color ink cartridges optional, ink box with red, yellow, blue, green, black, white, invisible seven colors, change colors only need to replace ink cartridges, no need to change machines to meet your diverse needs;



1.Printing manufacture date as below:



2.Printing QR Code:



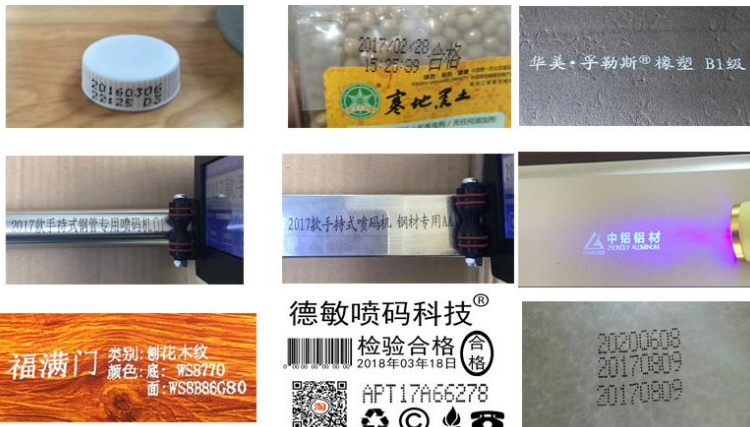


H&Q=High Quality

3.Printing product name:



4.Printing effects as below:




5.Import fast dry ink, that is, when print then dry, nozzle will not plug, ink cartridges will not dry, waterproof, fire and friction resistance;

6.High clear ink cartridge nozzle, clear printing, fast printing support, high efficiency, no stop,360° free printing;


7.Clear and concise interface, a key printing code, farewell cumbersome;



8.  USB plug,can be connected to U disk and import picture;

9.Detachable battery, independent battery, easy to charge;



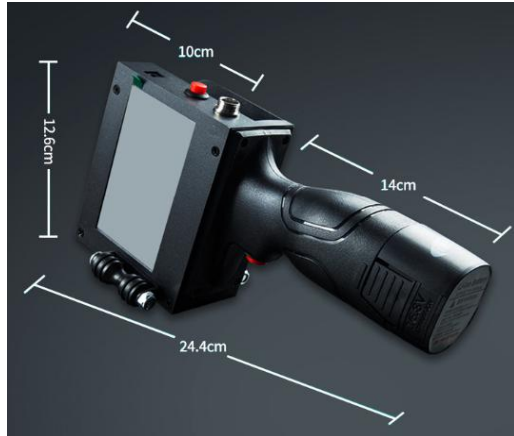
10.  Anti-slip handle, ergonomic design, easy to use;

11.Hand-held / online dual-use: handheld is not tired, assembly line saves time and effort, high efficiency, assembly line photoelectric induction

automatic print code, hand-held keys triggered to print

one at a time;

12.Machine size:



13.Part name:



No.	Part name:
1.	Charging hole
2.	Power switch
3.	USB Interface
4.	Cartridge holder
5.	Encoder
6.	Operational interface
7.	Photoelectric interface
8.	Synchronous wheel
9.	Print button
10.	Battery
11.	Printing handle

14.Product and accessories:

产品及配件
ACCESSORIES



15.Should correct installation of batteries, incorrect installation of batteries will cause short circuit, which will lead to motherboard burning, machine damage;



✓ **Correct;**

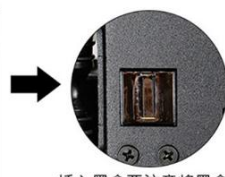


X **incorrect;**

16. Correct installation of cartridges:



1.将墨盒插入机器



插入墨盒要注意将墨盒喷头对准卡槽

① Insert the cartridge into the machine. Note that the

cartridge nozzle is aligned with the slot;

② Clasp upper plate;

③ Set up the print content and prepare to print;



2.向上板上卡扣，锁住墨盒



3.设置好喷印内容，准备打码

* When the machine is not in use, be sure to remove the ink box and put it in the clip to save it!

* 机器不使用时，务必将墨盒取出来放进卡夹里保存！

Matching Programme(1)

Matching Programme(2)

*Support and conveyor belt need extra fees



喷码机

支架



喷码机

支架

传输带