



**KONICA MINOLTA**

# **V4 Universal Print Driver System Administrator's Guide**

MFP System Development Division  
Office Business Headquarters  
System Solution Strategy and Operation  
KONICA MINOLTA, INC.

Version	Date
2.3	Dec/5/2023

## Revision History

Version	Date	Modified Contents	Description
1.0	Jan/17/2017	Initial version	Released edition
1.1	Mar/23/2018	<ul style="list-style-type: none"> <li>Corrected target version to Ver1.1 release version</li> <li>2.2. V4 UPD Components</li> <li>2.3. Supported Models</li> <li>3.2.4. Installation in Point and Print environment</li> <li>4.1. Printing Preferences UI</li> <li>4.2. Device Settings UI</li> <li>5.3. Editing My Tab</li> <li>5.4. Adding Favorite Setting</li> <li>5.5. Editing Favorite Setting</li> <li>7.1. List of support functions of each model</li> </ul>	Released edition
1.2	May/18/2018	<ul style="list-style-type: none"> <li>3.2.4. Installation in Point and Print environment</li> </ul>	Released edition
1.3	Jun/6/2018	<ul style="list-style-type: none"> <li>7.1. List of support functions of each model</li> </ul>	Released edition
1.4	Dec/12/2018	<ul style="list-style-type: none"> <li>7.1. List of support functions of each model</li> <li>6. Frequently Asked Questions</li> <li>2.3. Supported Models</li> <li>2.1. System requirements</li> <li>Target Driver Version</li> </ul>	Released edition
1.5	Jan/30/2019	<ul style="list-style-type: none"> <li>Trademark Credits</li> <li>7.1. List of support functions of each model</li> <li>5.6 Customize by Administrators</li> </ul>	Released edition
1.6	Sep/9/2019	<ul style="list-style-type: none"> <li>7.1. List of support functions of each model</li> <li>2.3. Supported Models</li> <li>Target Driver Version</li> </ul>	Released edition

1.7	Jan/31/2020	<ul style="list-style-type: none"> <li>• 7.1. List of support functions of each model</li> <li>• 2.3. Supported Models</li> <li>• Target Driver Version</li> </ul>	Released edition
1.8	Jun/18/2021	<ul style="list-style-type: none"> <li>• Target Driver Version</li> <li>• 1. Introduction</li> <li>• 3.1 Summary</li> </ul>	Released edition
1.9	Jun/18/2021	<ul style="list-style-type: none"> <li>• Trademark Credits</li> <li>• 2.1. System requirements</li> <li>• 3.1 Summary</li> </ul>	Released edition
2.0	Aug/10/2022	<ul style="list-style-type: none"> <li>• Target Driver Version</li> <li>• 2.3. Supported Models</li> <li>• 7.1. List of support functions of each model</li> </ul>	Released edition
2.1	Jun/12/2023	<ul style="list-style-type: none"> <li>• Target Driver Version</li> <li>• 2.3. Supported Models</li> <li>• 7.1. List of support functions of each model</li> </ul>	Released edition
2.2	Sep/4/2023	<ul style="list-style-type: none"> <li>• Target Driver Version</li> <li>• 2.3. Supported Models</li> <li>• 7.1. List of support functions of each model</li> </ul>	Released edition
2.3	Dec/5/2023	<ul style="list-style-type: none"> <li>• Target Driver Version</li> <li>• 2.3. Supported Models</li> <li>• 7.1. List of support functions of each model</li> </ul>	Released edition

## Copyright

Copyright(c) 2016 KONICA MINOLTA, INC.

## Trademark Credits

PCL is a trademark of Hewlett-Packard Company.

Microsoft, Windows, Windows Server2016, Windows Server2019, Windows Server2022, Windows 10, and Windows 11 are U.S. registered trademarks of Microsoft Corporation.

## Target Driver Version

The information in this document applies to the following versions of KONICA MINOLTA V4 Universal Print Drivers.

- KONICA MINOLTA Universal V4 PCL Version 2.4

## Index

1. Introduction .....	7
2. Software Description .....	8
2.1. System requirements.....	8
2.2. V4 UPD Components.....	8
2.3. Supported Models .....	9
3. Installing, Uninstalling.....	14
3.1. Summary .....	14
3.2. Install .....	14
3.2.1. Installing in “Network Search” by using the Included Installer .....	14
3.2.2. Installing in “Network Search” by using the Included Installer .....	18
3.2.3. Manual Installation .....	21
3.2.4. Installation in Point and Print environment .....	29
3.2.5. Installation of Windows Store Device App .....	41
3.3. Uninstallation .....	42
3.3.1. If You Installed the Software Using the Included Installer .....	42
3.3.2. Manual Uninstallation .....	45
3.3.3. Uninstallation in Point and Print environment .....	45
3.3.4. Uninstallation of Windows Store Device App.....	46
4. V4 Universal Print Driver’s UI.....	47
4.1. Printing Preferences UI .....	47
4.2. Device Settings UI.....	51
4.3. Start Experience UI.....	53
5. Using V4 Universal Print Driver.....	54
5.1. Changing the model.....	54
5.2. Changing the display language .....	57
5.3. Editing My Tab .....	59
5.3.1. Adding My Tab .....	60
5.3.2. Deleting My Tab .....	64
5.3.3. Moving My Tab.....	64
5.4. Adding Favorite Setting .....	65
5.5. Editing Favorite Setting.....	66
5.5.1. Deleting Favorite Setting .....	68
5.5.2. Moving Favorite Setting .....	69
5.5.3. Editing Favorite Print Setting .....	69

- 5.5.4. Edit Favorite Setting ..... 71
- 5.6. Administrator Customization ..... 73
  - 5.6.1. Print setting of customization target..... 73
  - 5.6.2. Setting method ..... 74
  - 5.6.3. Export and import the setting of Administrator Customization ..... 78
- 6. Frequently Asked Questions..... 80
- 7. Appendix ..... 81
  - 7.1. List of support functions of each model..... 81

## 1. Introduction

KONICA MINOLTA V4 Universal Print Driver supports the new printing system V4 architecture that is available from Windows 8.

### User Benefits

- **UI suitable for touch operation**

KONICA MINOLTA V4 Universal Print Driver has a new UI that supports touch operation. It solves the problem that it is hard to operate when using a conventional driver with a tablet PC.

- **Windows Store Apps support**

If you use a conventional driver with an OS of Windows 8 or later, the Microsoft Standard UI will be displayed on the Printing Preference when printing from the Windows Store Apps, and only the limited print setting can be used. The KONICA MINOLTA V4 Universal Print Driver supports Windows Store Apps, so you can use almost the same functions as desktop application printing.

## 2. Software Description

### 2.1. System requirements

KONICA MINOLTA V4 Universal Print Driver supports the following OS versions.

➤ Windows

- Windows 10
- Windows 11
- Windows Server 2016
- Windows Server 2019
- Windows Server 2022

### 2.2. V4 UPD Components

KONICA MINOLTA V4 Universal Print Driver consists of three main types of component: UPD Core, Printer Extension (PE), and Windows Store Device App (WSDA). UPD Core is the core module of V4 UPD, and provides main functionality such as printing. Printer Extension is an application that generates the Printing Preferences screen when printing from desktop applications. It is provided in combination with UPD Core. Windows Store Device App is an application that mostly generates the Printing Preferences screen when printing from Windows Store Apps. It will be distributed via the Windows Store.

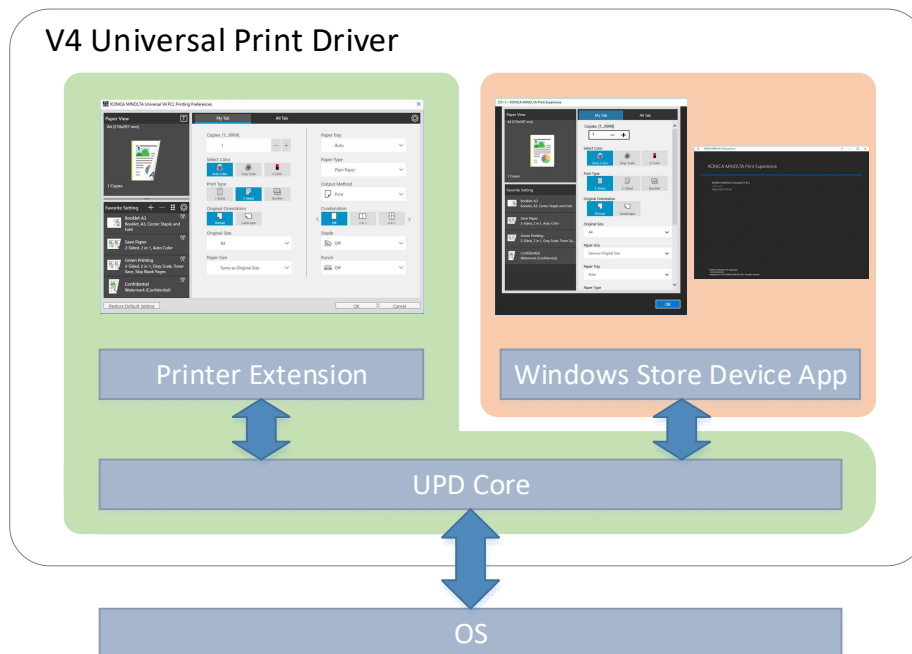


Figure 2.2-1 V4 UPD Components



## 2.3. Supported Models

The table below lists the KONICA MINOLTA products supported by V4 Universal Print Driver. Supporting functions of V4 Universal Print Driver are limited compared to normal drivers. See Error! Reference source not found. Error! Reference source not found. for details about supporting functions.

<b>A3 Color</b>	bizhub C658
	bizhub C558
	bizhub C458
	bizhub C368
	bizhub C258
	bizhub C308
	bizhub C287
	bizhub C227
	bizhub C266
	bizhub C226
	bizhub C754(e)
	bizhub C654(e)
	bizhub C554(e)
	bizhub C454(e)
	bizhub C364(e)
	bizhub C284(e)
	bizhub C224(e)
	bizhub C759
	bizhub C659
	Workplace Hub
	bizhub C281
	bizhub C221
	bizhub C221s
	bizhub C360i
	bizhub C300i
	bizhub C250i
	bizhub C650i

	bizhub C550i
	bizhub C450i
	bizhub C287i
	bizhub C257i
	bizhub C227i
	bizhub C286i
	bizhub C266i
	bizhub C226i
	bizhub C750i
	bizhub C451i
	bizhub C361i
	bizhub C301i
	bizhub C251i
	bizhub C751i
	bizhub C651i
	bizhub C551i
<b>A3 BW</b>	bizhub 958
	bizhub 808
	bizhub 758
	bizhub 558
	bizhub 458
	bizhub 367
	bizhub 287
	bizhub 227
	bizhub 754(e)
	bizhub 654(e)
	bizhub 554e
	bizhub 454e
	bizhub 364e
	bizhub 284e
	bizhub 224e
	bizhub 368
	bizhub 308

	bizhub 658e
	bizhub 558e
	bizhub 458e
	bizhub 368e
	bizhub 308e
	bizhub 306i
	bizhub 266i
	bizhub 246i
	bizhub 226i
	bizhub 750i
	bizhub 650i
	bizhub 550i
	bizhub 450i
	bizhub 360i
	bizhub 300i
	bizhub 950i
	bizhub 850i
	bizhub 451i
	bizhub 361i
	bizhub 301i
	bizhub 751i
	bizhub 651i
	bizhub 551i
<b>A4 Color</b>	bizhub C3851
	bizhub C3351
	bizhub C3851FS
	bizhub C3350
	bizhub C3850
	bizhub C3850FS
	bizhub C3100P
	bizhub C3110
	bizhub C4050i
	bizhub C3350i
	bizhub C4000i

	bizhub C3300i
	bizhub C3320i
	bizhub C4051i
	bizhub C3351i
	bizhub C4001i
	bizhub C3301i
	bizhub C3321i
<b>A4 BW</b>	bizhub 4750
	bizhub 4050
	bizhub 4752
	bizhub 4052
	bizhub 4700P
	bizhub 4000P
	bizhub 3300P
	bizhub 3301P
	bizhub 4020
	bizhub 3320
	bizhub 4702P
	bizhub 4402P
	bizhub 3602P
	bizhub 4422
	bizhub 3622
	bizhub 5020i
	bizhub 5000i
	bizhub 4020i
	bizhub 4000i
	bizhub 4750i
	bizhub 4050i
	bizhub 4700i
	bizhub 4751i
	bizhub 4051i
	bizhub 4701i
<b>Baseline *1</b>	

**Table 2-1 KONICA MINOLTA products supported by V4 Universal Print Driver**

\*1: This is a common model. If a driver does not support by V4 Universal Printer Driver or a third-party device is selected, it is also possible to send print data. However, Konica Minolta cannot guarantee the printing results.

## 3. Installing, Uninstalling

### 3.1. Summary

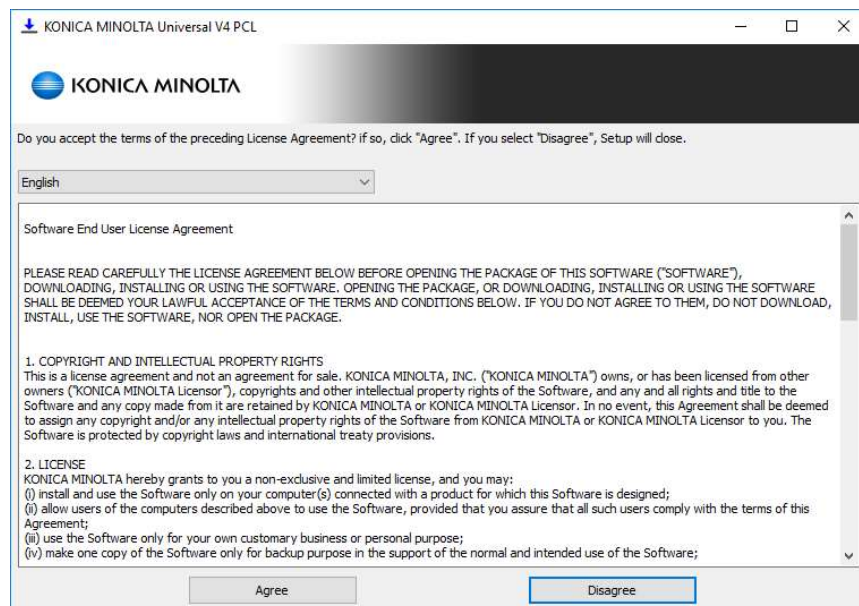
By using the included installer/uninstaller (\*1), you can easily install or uninstall the KONICA MINOLTA V4 Universal Print Driver.

\*1: Execute "Setup.exe" in the case of x86 environment, "Setup64.exe" in the case of x64 environment. In the case of ARM64 environment, execute "SetupARM64\_Win11.exe" for Windows 11 and "SetupARM64\_Win10.exe" for Windows 10.

### 3.2. Install

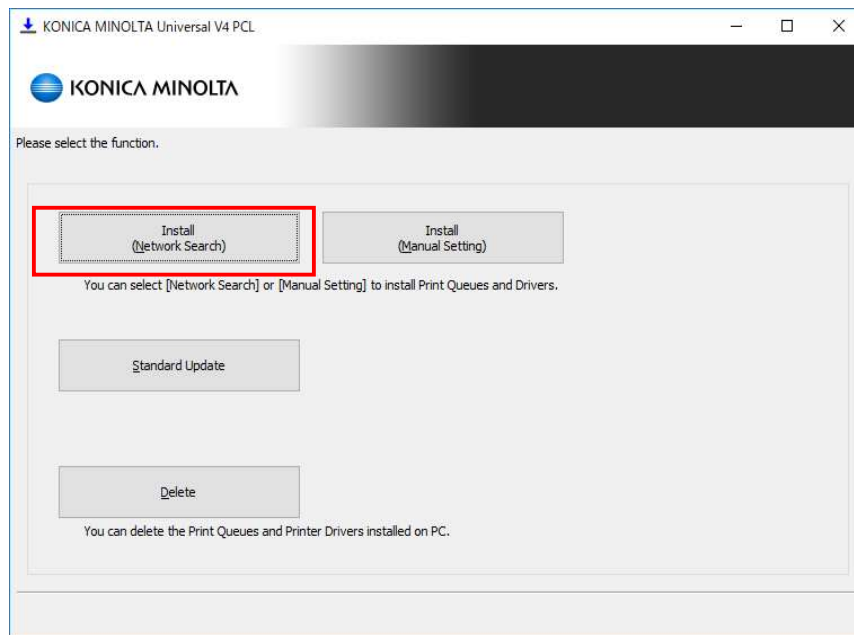
#### 3.2.1. Installing in “Network Search” by using the Included Installer

1. Execute “Setup.exe”.
2. Check the Software End User License Agreement, and if there are no problems, click “Agree”.



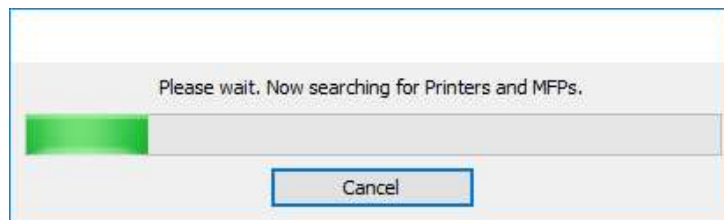
**Figure 3.2-1 Software End User License Agreement dialog box**

3. Click “Install (Network Search)”.



**Figure 3.2-2 Function Selection dialog box**

4. Starting search devices on the network. Click “Cancel” if you want to stop searching.



**Figure 3.2-3 Searching dialog box**

5. Devices found in the search will be displayed in a list.

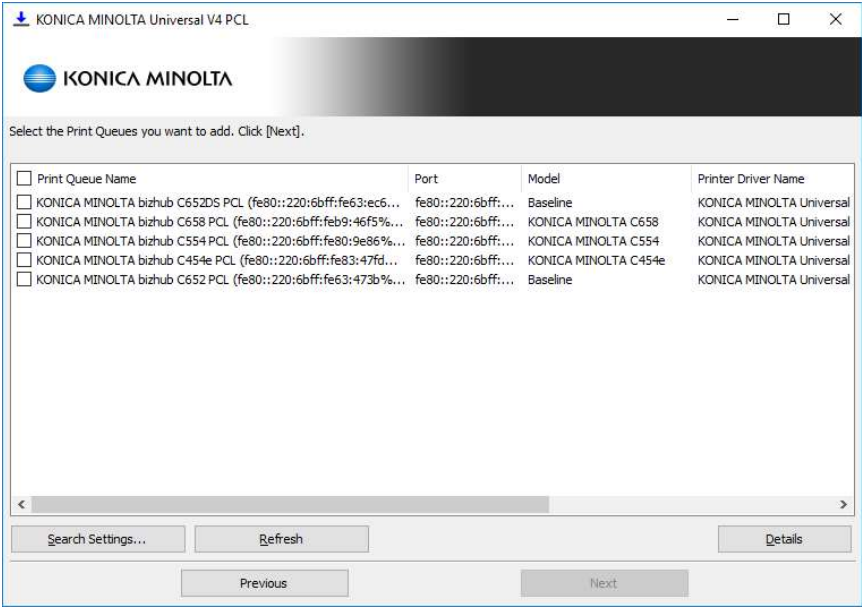


Figure 3.2-4 Device List dialog box

6. Settings such as Print Queue Name and Printer Driver Name will be displayed by clicking “Detail”. Check the device you want to install and click “Next”.

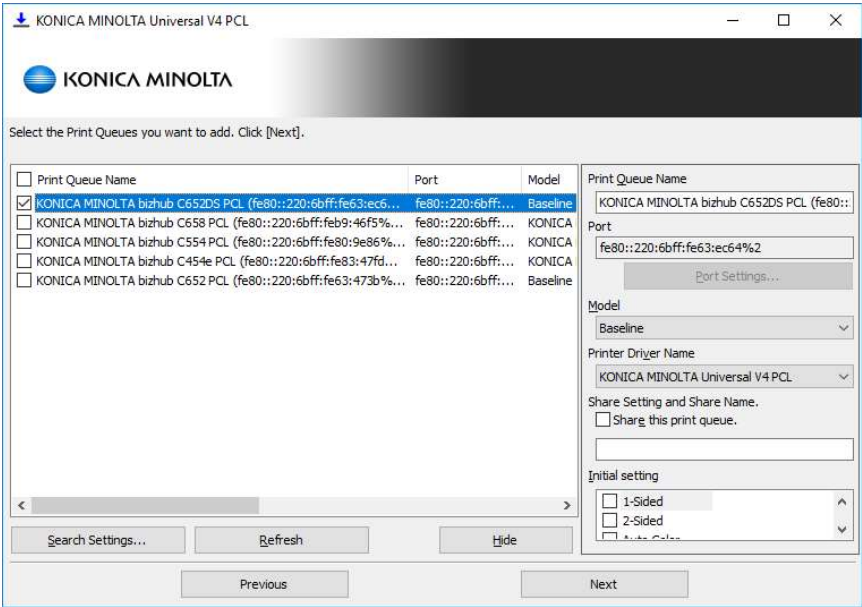


Figure 3.2-5 Device List dialog box (Detail)



7. Installation Confirmation dialog box is displayed. Click “Install” to start installing.

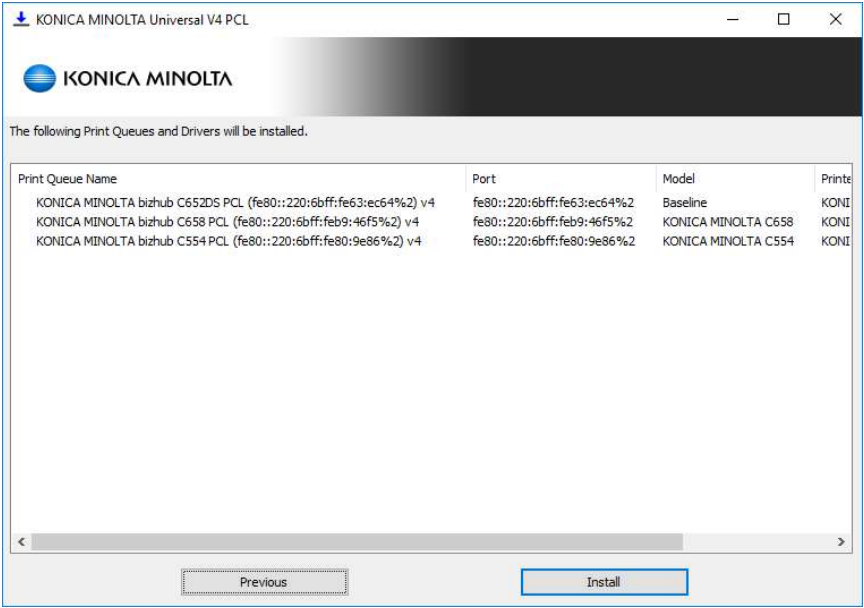


Figure 3.2-6 Installation Confirmation dialog box

8. Progress of the installation is displayed.

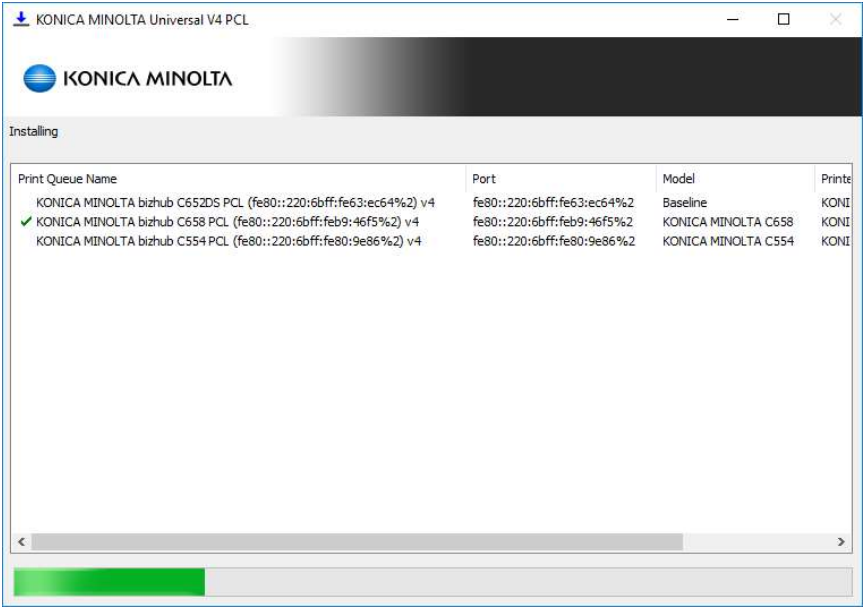


Figure 3.2-7 Installation Process dialog box

9. The installation is complete.

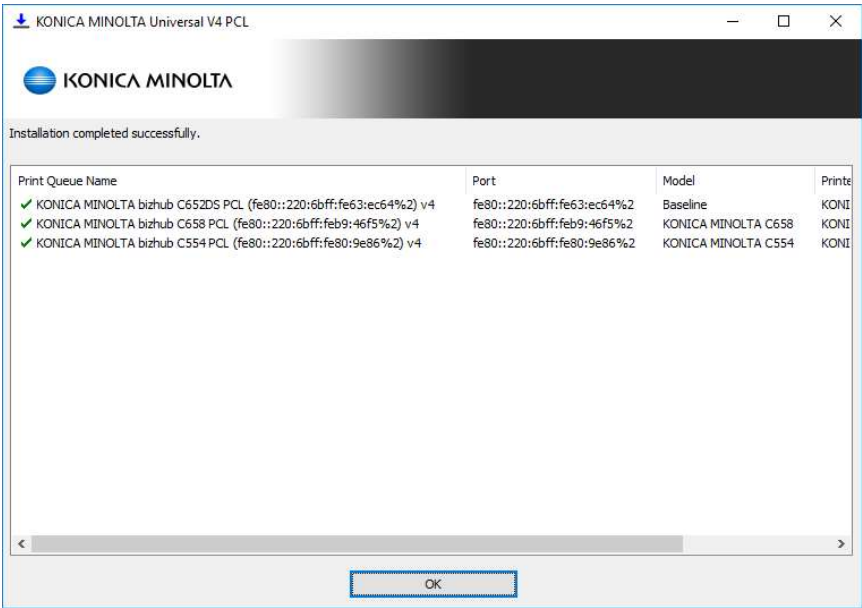


Figure 3.2-8 Installation Complete dialog box

3.2.2. Installing in “Network Search” by using the Included Installer

1. Execute “Setup.exe”.
2. Check the Software End User License Agreement, and if there are no problems, click “Agree”.

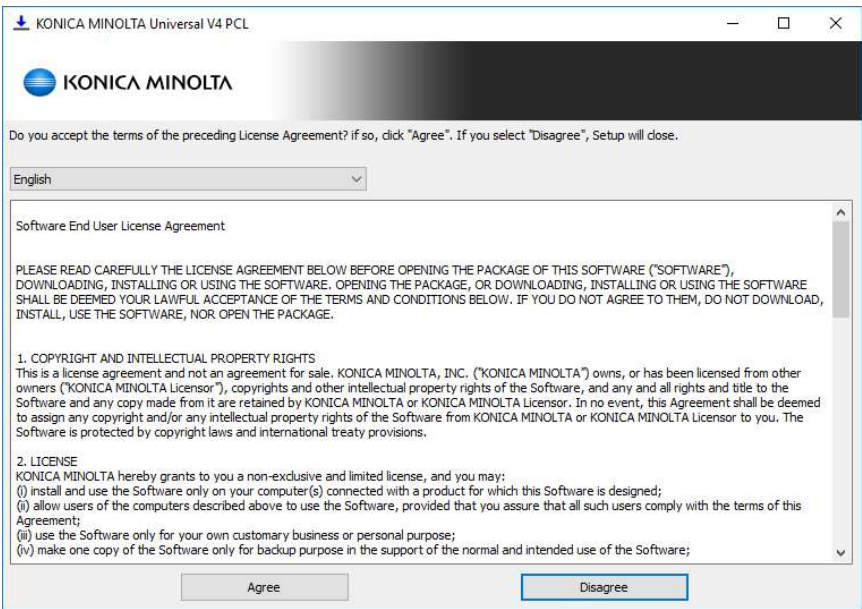


Figure 3.2-9 Software End User License Agreement dialog box

3. Click “Install (Manual Setting)”.

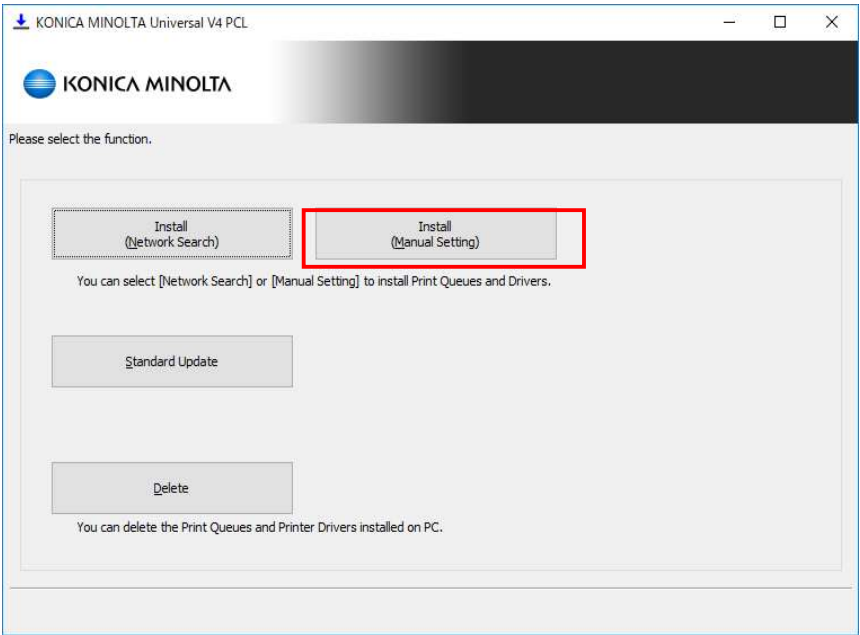


Figure 3.2-10 Function Selection dialog box

4. Install (Manual Setting) dialog box is displayed. Click “Add to list” at the bottom left to add a row to the list.

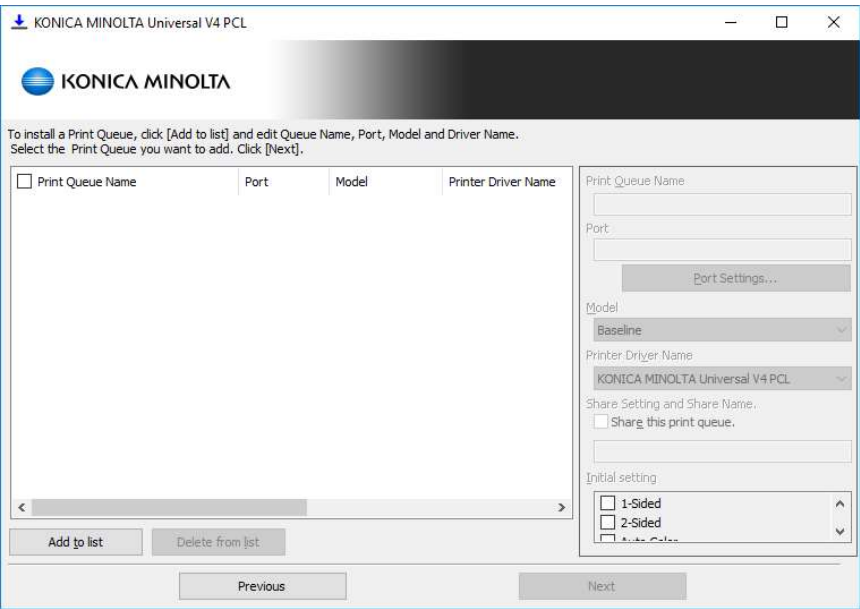


Figure 3.2-11 Install (Manual Setting) dialog box

5. Select the added row, and enter information such as Print Queue Name and Port on the right side of the setting dialog box. Make sure that you have checked on the beginning of the row you want to add the print queue and click “Next”.

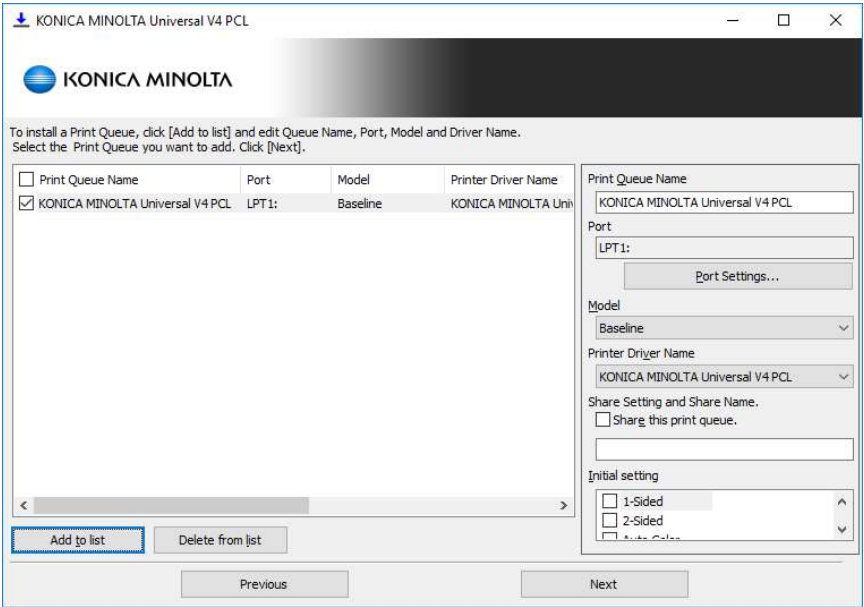


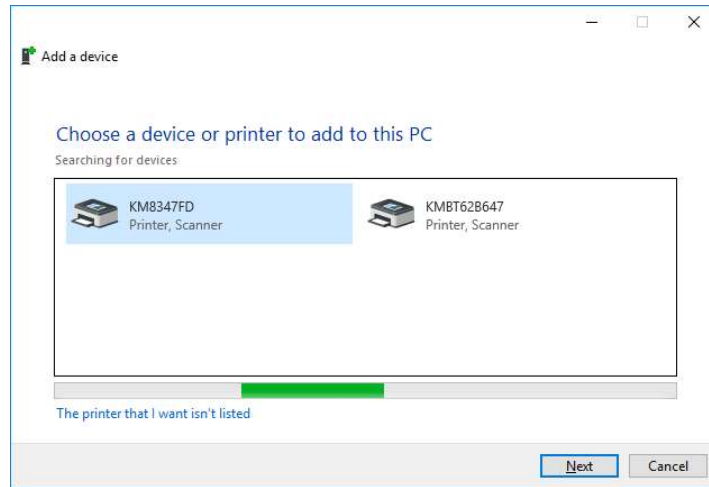
Figure 3.2-12 Install (Manual Setting) dialog box (continue)

6. The following procedure is same as procedure 7 and later of 3.2.1 Installing in “Network Search” by using the Included Installer.

### 3.2.3. Manual Installation

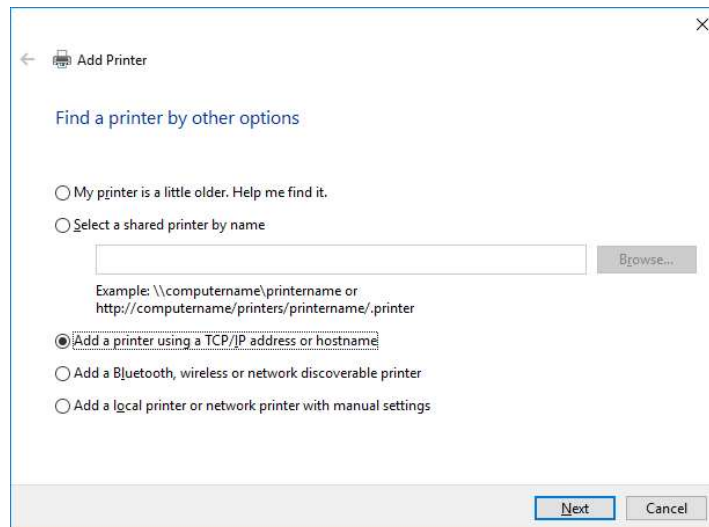
Install the driver using the Windows “Add Printer” wizard.

1. Open the “Devices and Printers” folder and click the “Add a printer” button.
2. The Add Printer wizard starts. Click “The printer that I want isn’t listed”.



**Figure 3.2-13 Searching for devices**

3. If a port already exists, select “Add a local printer of network printer with manual settings” and then select an existing port. If not, select “Add a printer using a TCP/IP address or hostname” and click “Next”.



**Figure 3.2-14 Find a printer by other options**

4. Enter IP in the “Host name or IP address” field and press “Next”.

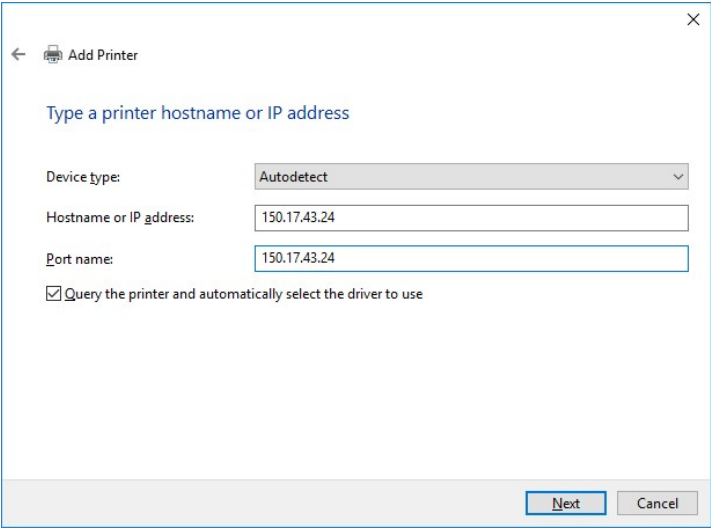


Figure 3.2-15 Type a printer hostname of IP address

5. Click “Have Disk”.

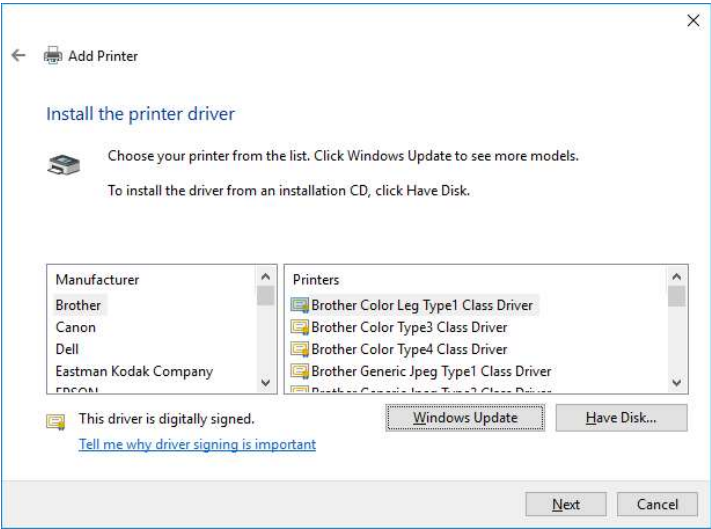


Figure 3.2-16 Printer Driver Selection

6. Click “Browse”.

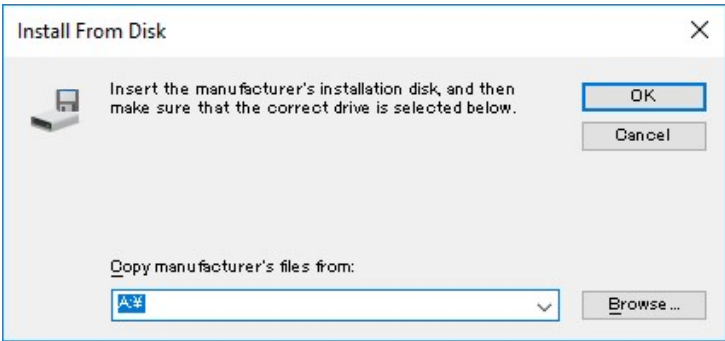


Figure 3.2-17 Install From Disk

7. Access the driver storage location, select “KOBxxK\_01”, and click “Open”.

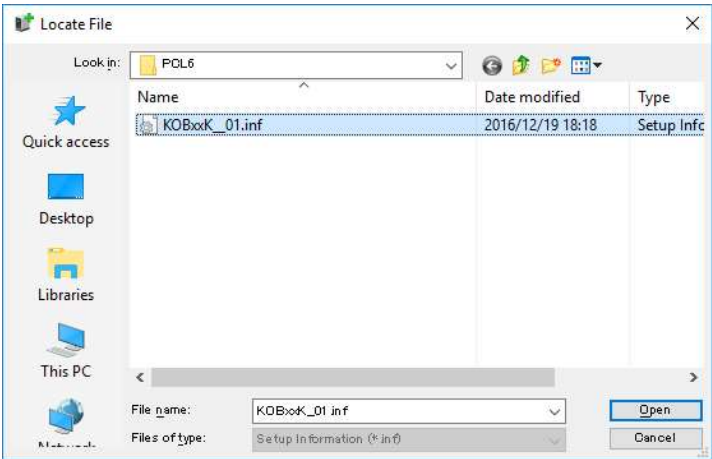


Figure 3.2-18 Locate File

8. Click “OK”.

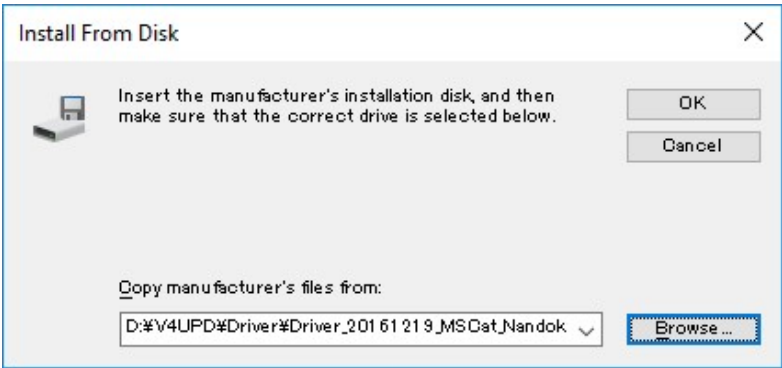


Figure 3.2-19 Install From Disk

9. Confirm that “KONICA MINOLTA Universal V4 PCL” is selected and click “Next”.

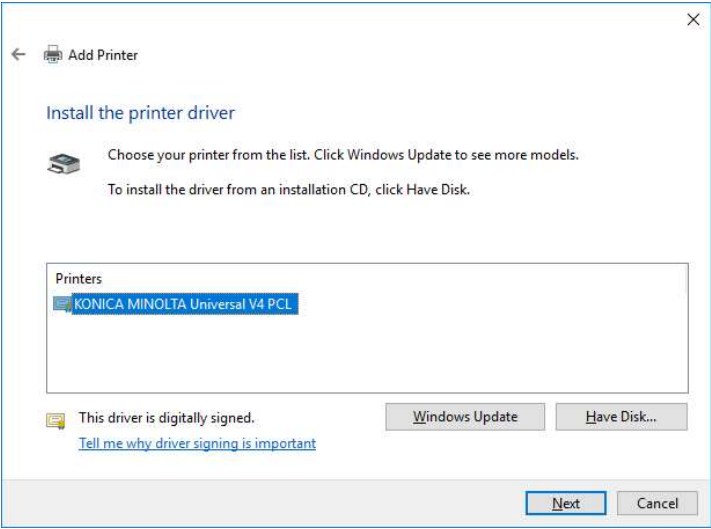


Figure 3.2-20 Printer Driver Selection

10. You can rename the printer name. If not, just click “Next”.

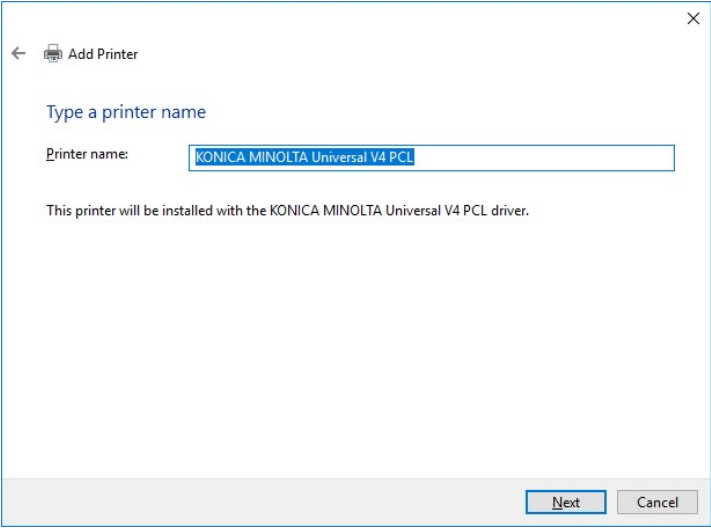


Figure 3.2-21 Type a printer name



11. Installing printer.

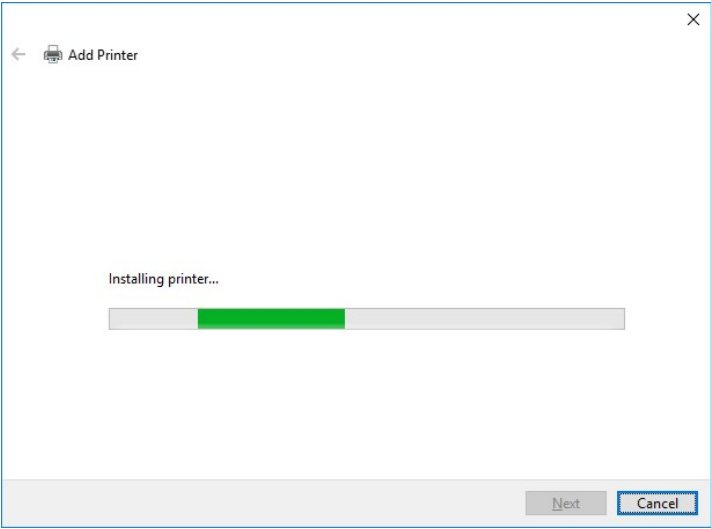


Figure 3.2-22 Installing printer

12. The printer sharing setting screen will be displayed. If you want to share it, enter sharing information, if not, select "Do not share this printer" and click “Next”.

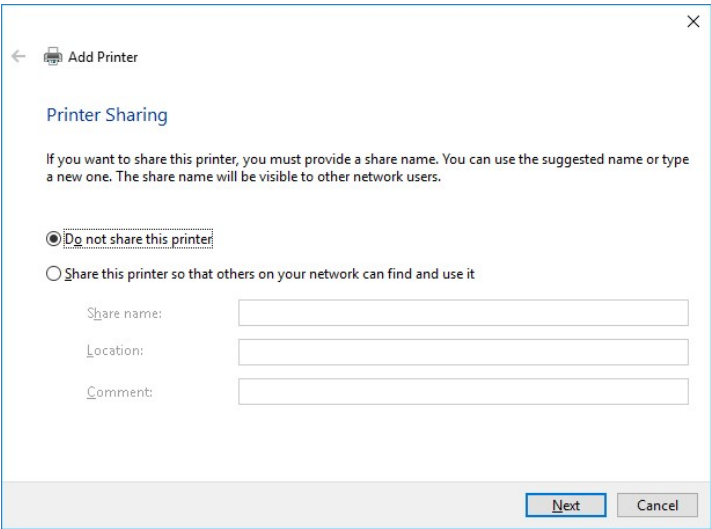
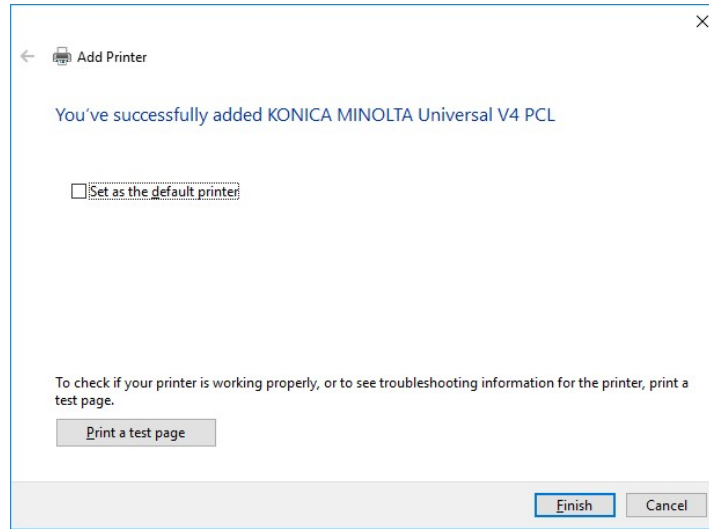


Figure 3.2-23 Printer Sharing

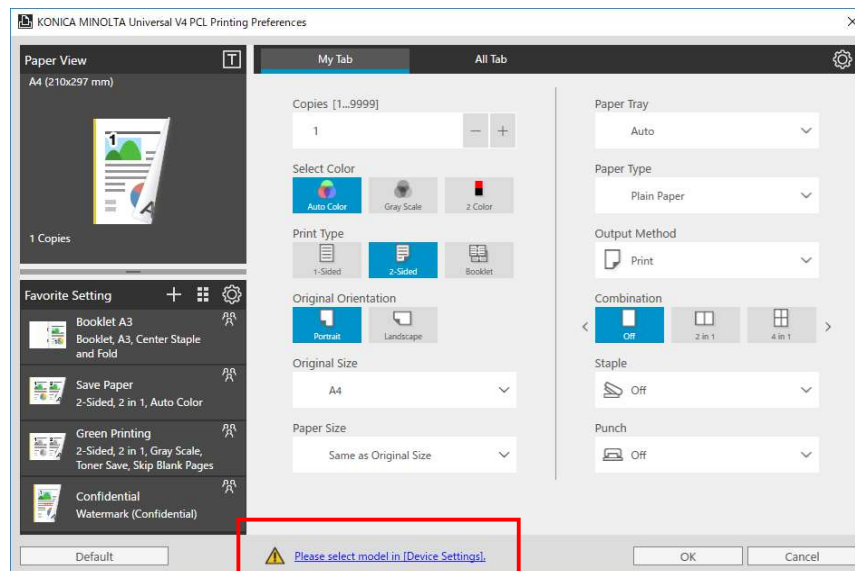
13. The installation is complete. Click “Finish” to close the dialog box.



**Figure 3.2-24 Installation complete**

If you install KONICA MINOLTA V4 Universal Print Driver using this method, the model will not be selected automatically. So you also need to do the following procedure to select a model.

14. Right click the added printer icon from the “Devices and Printers” folder to open the Printing Preferences.
15. Click the following message that displayed on the Printing Preferences.
- “Please select model in [Devices and Printers]”.



**Figure 3.2-25 Printing Preferences**

16. The Confirmation dialog box will be displayed. If you want to save the printing settings, click “Yes”. If not, click “No”.

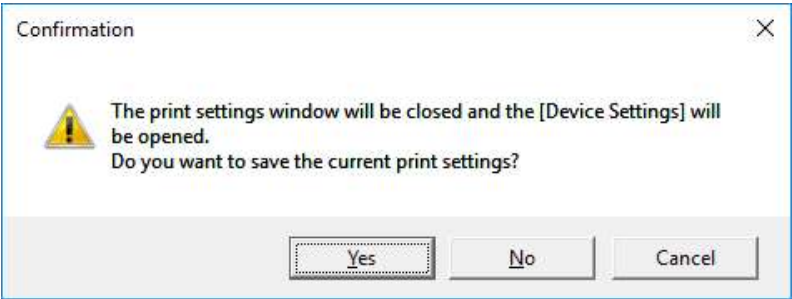


Figure 3.2-26 Confirmation

17. Select a model in Model Selection dialog box and Click “OK”. If you want to acquire the model automatically, Click “Auto”.

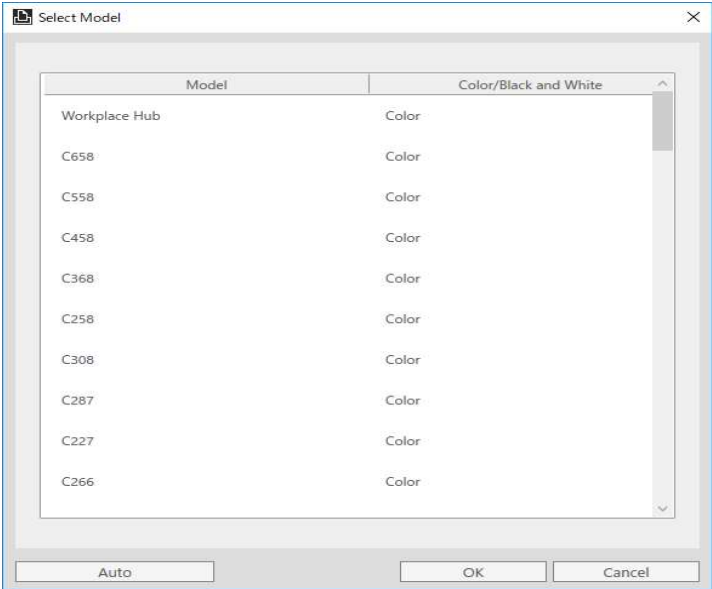


Figure 3.2-27 Model Selection

18. The Device Settings dialog box will be displayed. You can make settings for the device. Otherwise, click “OK” to close it.

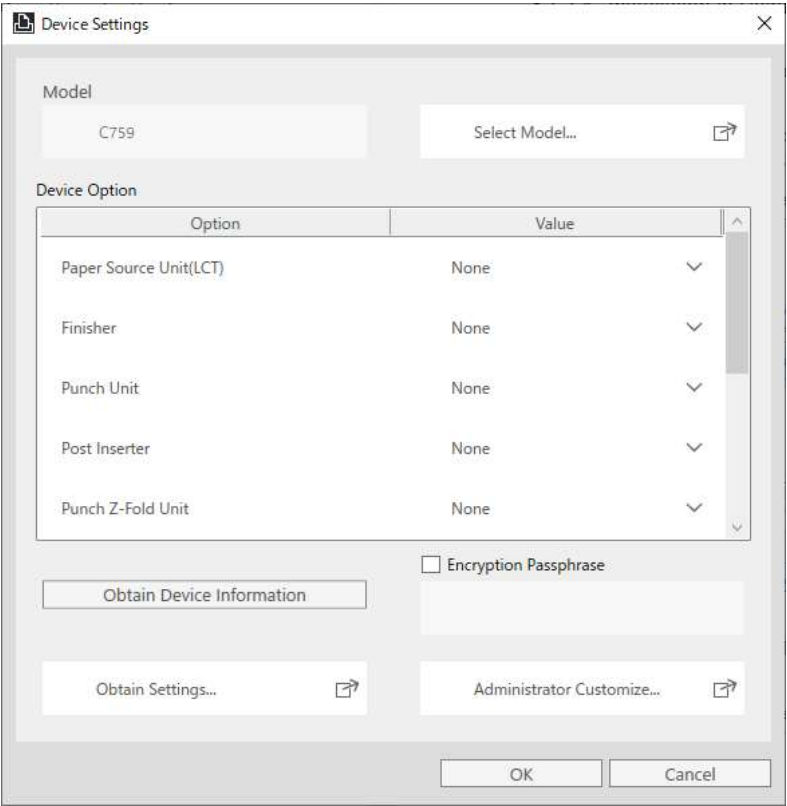


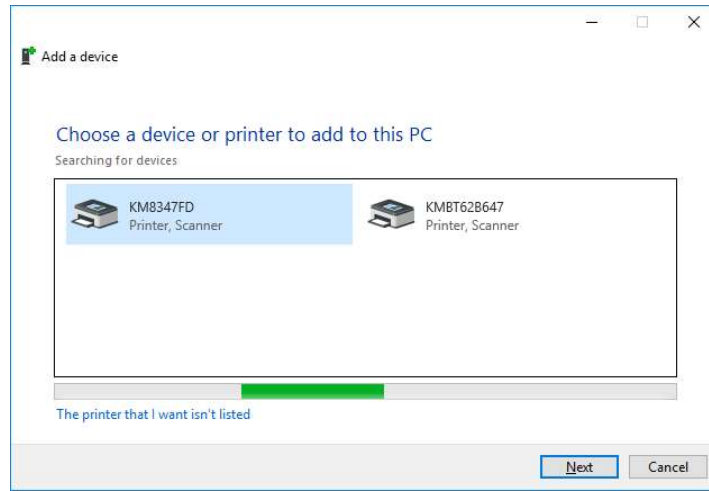
Figure 3.2-28 Device Settings

### 3.2.4. Installation in Point and Print environment

In V4UPD, when installing a shared printer in the Point and Print environment, it is necessary to install the driver on the client PC after installing the shared printer.

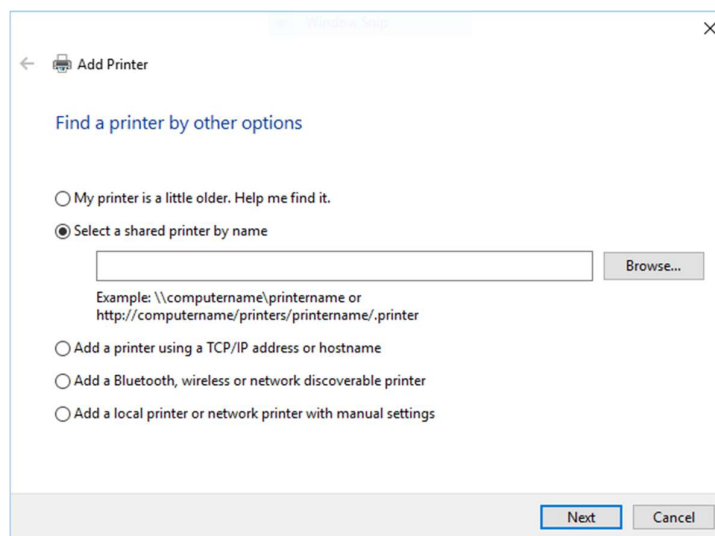
First, install the shared printer.

1. Open the “Devices and Printers” and click the “Add a printer” button.
2. The Add Printer wizard starts. Click “The printer that I want isn’t listed”.



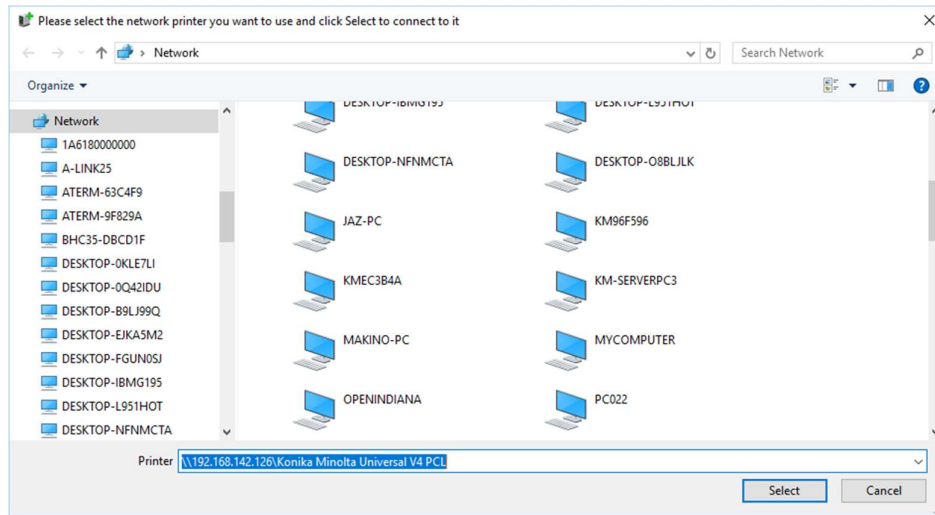
**Figure 3.2-29 Searching for devices**

3. In the “Find a printer by other options” window, select “Select a shared printer by name” radio button and enter the shared printer path. Alternatively, you can also click on [Browse...] button to search the shared printer from the network.



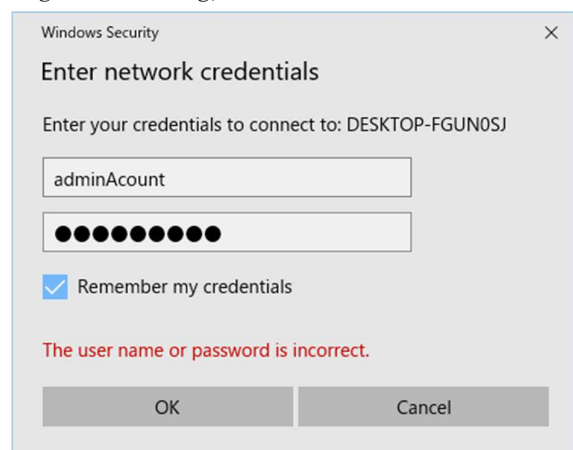
**Figure 3.2-30-1 Find a printer by other options**

4. Clicking on [Browse...] button displays a list of selectable computers. Select the network printer or enter the printer name and click [select].



**Figure 3.2-31-2 Select network Printer**

5. If network authentication is required, [Enter network credentials] window is displayed. On this window, enter the administrator account and password. Also make sure to check the "Remember my credentials" checkbox. If the checkbox is not checked, your credentials will not be stored and correct driver installation and operation will not be possible. After entering and checking, click [OK].



**Figure 3.2-32-3 Enter network credentials**

If you click [OK] and continue the installation without checking the "Remember my credentials" checkbox, please remove and reinstall the print queue. Alternatively, use the Credential Manager utility to register the credential information of the server.

6. Return to the “Find a printer by other options” window and click [Next].

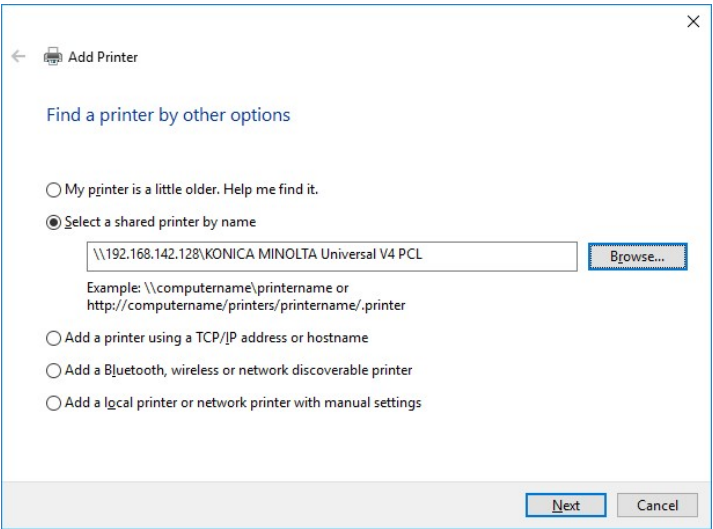


Figure 3.2-33-4 Find a printer by other options

7. Connecting to the shared printer.

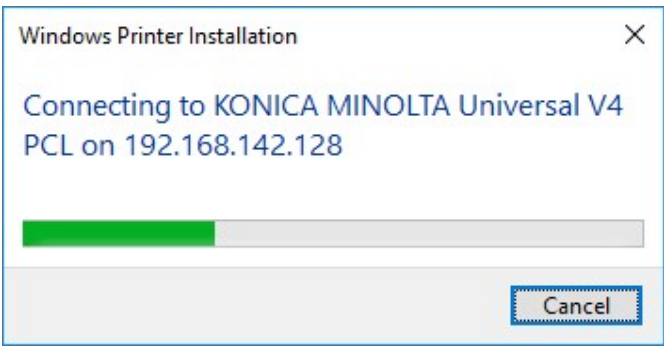
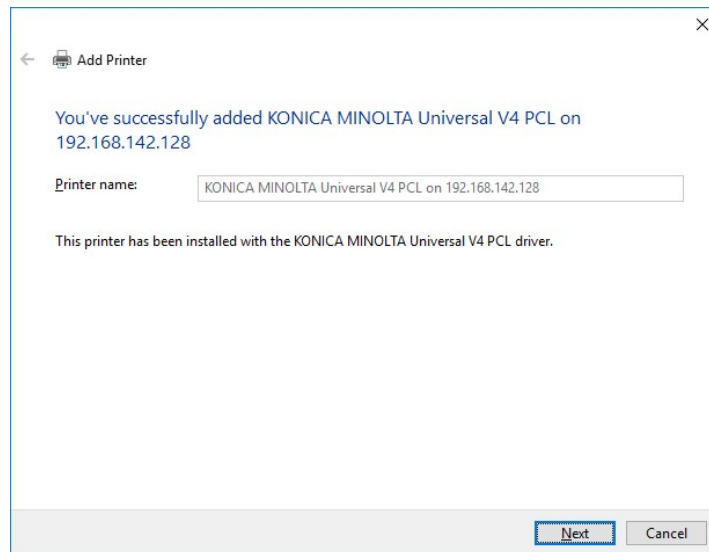


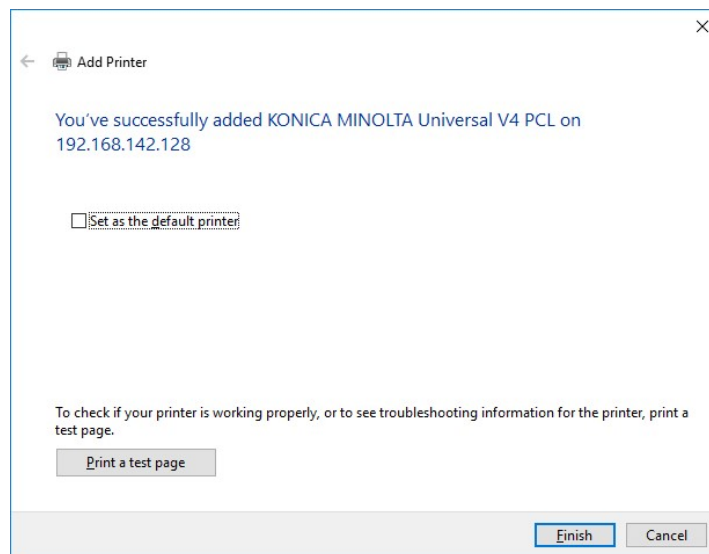
Figure 3.2-34 Connecting

8. If added successfully, the following screen is displayed. Click [Next].



**Figure 3.2-35 Added successfully**

9. Click "Finish" to close the dialog box.



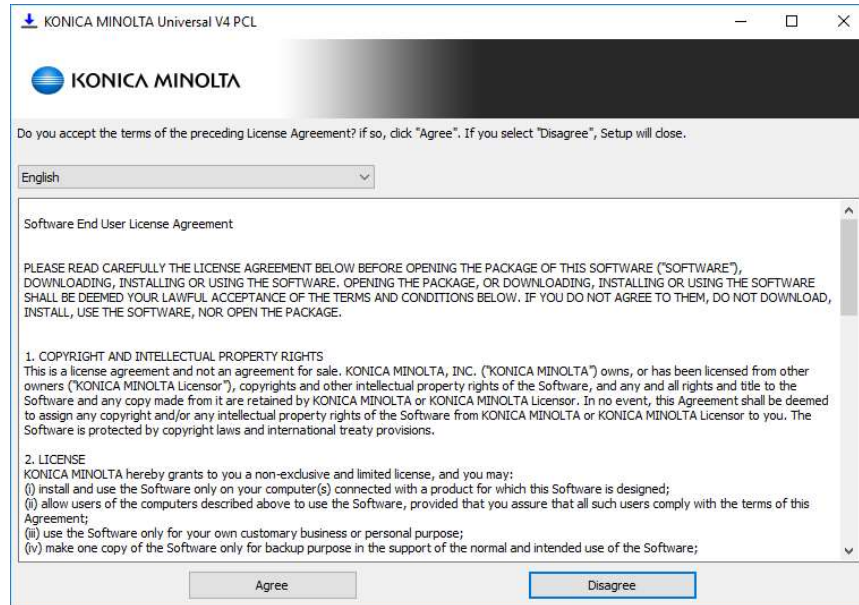
**Figure 3.2-36 Finish to install**

Next we will install the driver on the client PC. There are two ways.

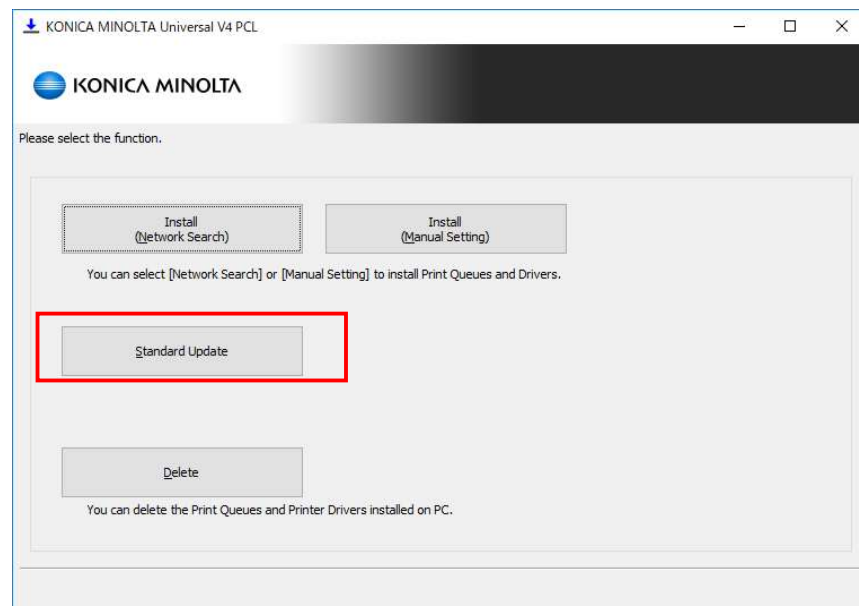


**Method1: Installing by using the Included Installer**

1. Execute "Setup.exe".
2. Check the Software End User License Agreement, and if there are no problems, click "Agree".

**Figure 3.2-37 Software End User License Agreement dialog box**

3. Click "Standard Update"

**Figure 3.2-38 Function Selection dialog box**

4. The print queue name of the shared printer that you installed is displayed in the Print Queue Name. Click “Next”.

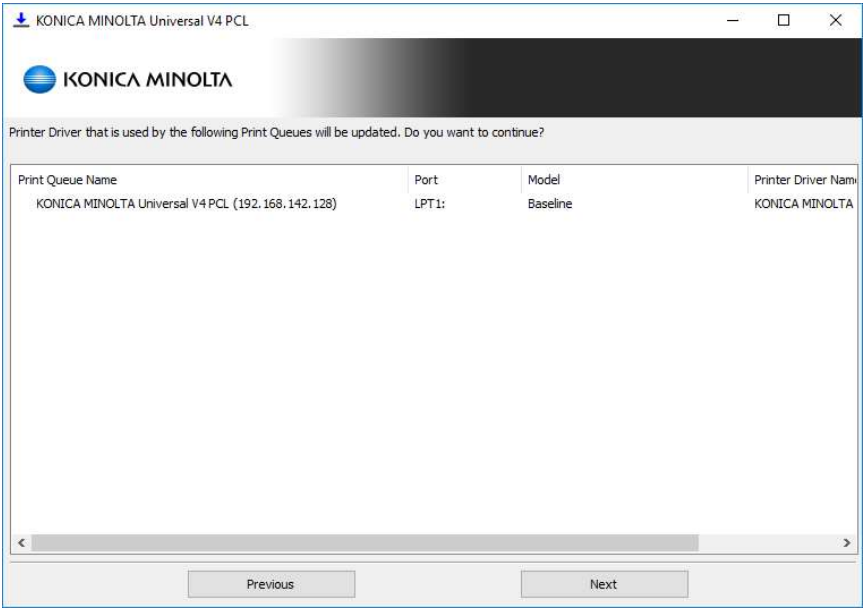


Figure 3.2-39 Update Target Confirmation dialog box

5. Confirm the print queue name and click “Update” to install the printer driver.

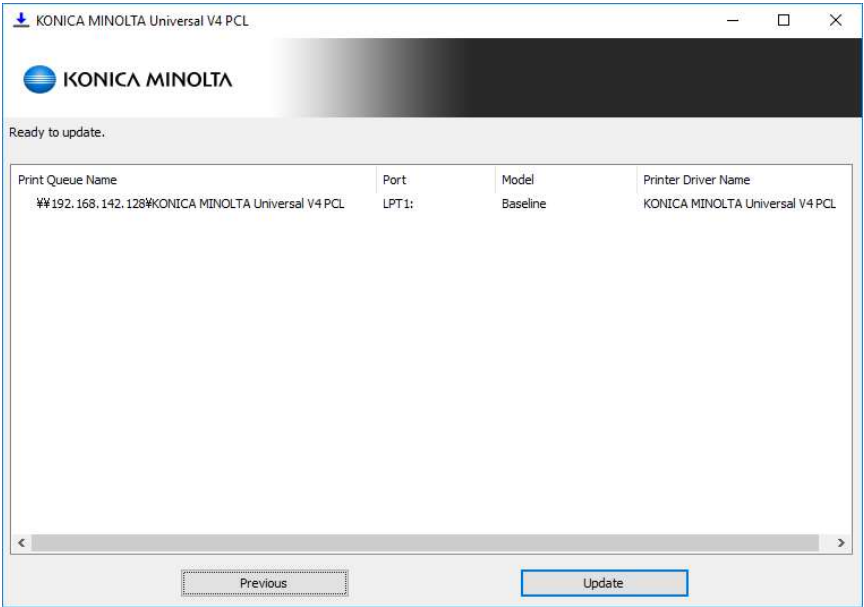


Figure 3.2-40 Update Target Confirmation dialog box (continue)

6. Staring update.

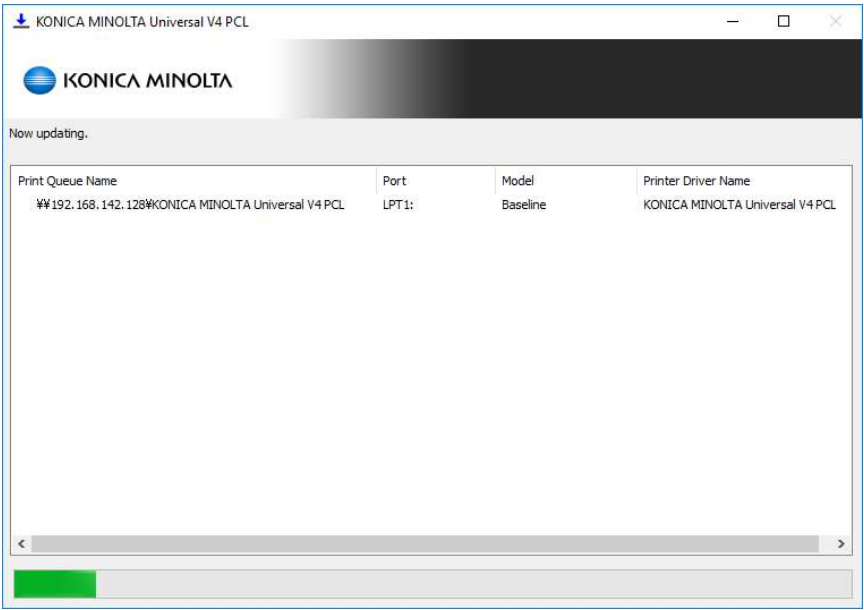


Figure 3.2-41 Updating Process dialog box

7. The update is complete. Click “OK” to close the dialog.

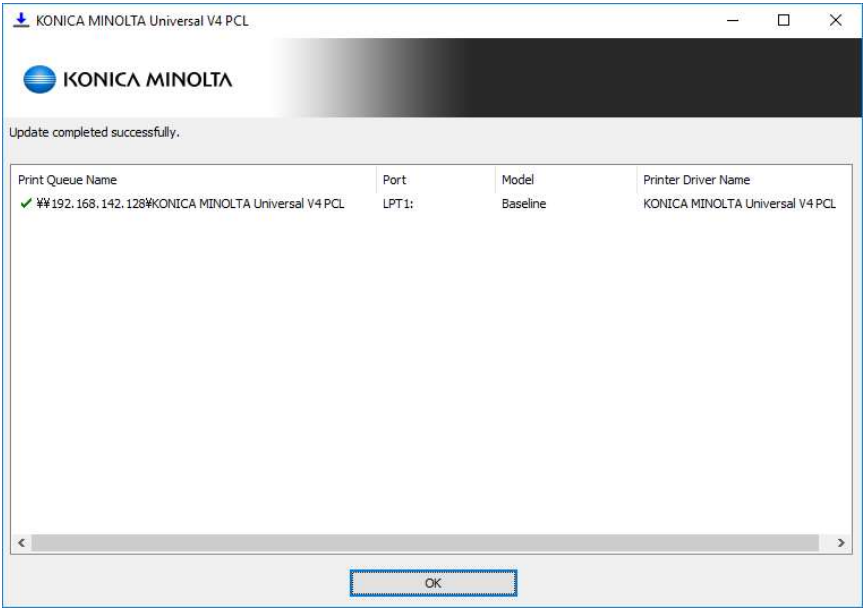
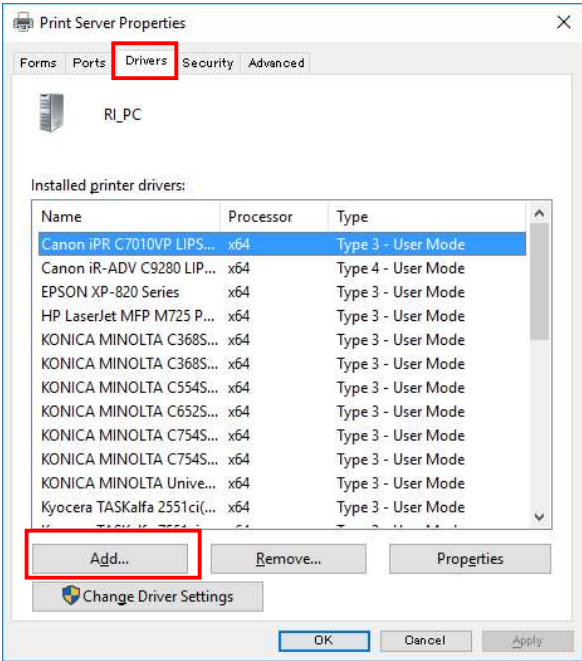


Figure 3.2-42 Update Complete dialog box

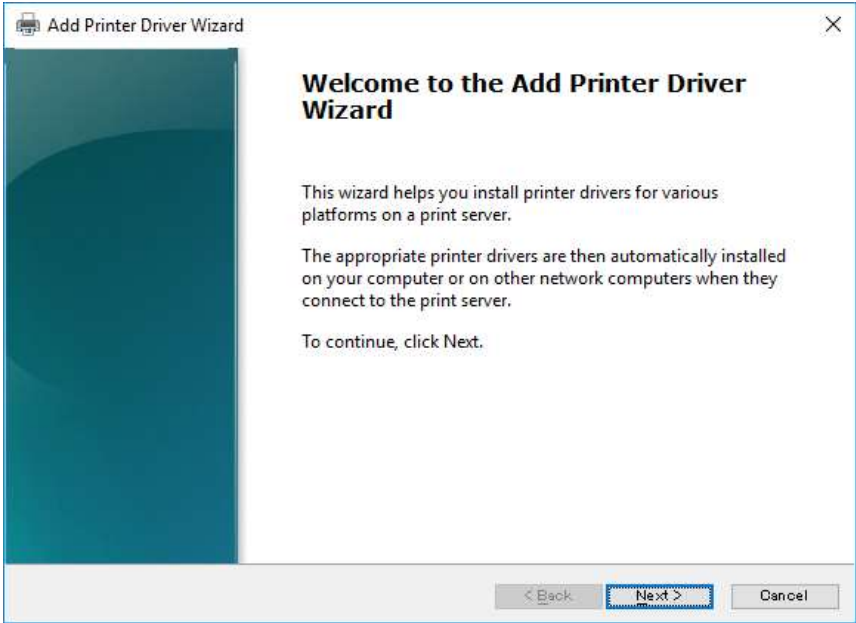
**Method2: Manual Installation**

1. Open the “Devices and Printers” folder and click the “Print Server Properties” button.  
Click the “Add” button in “Drivers” tab of Print Server Properties dialog box.



**Figure 3.2-43 Print Server Properties**

2. Click “Next”.



**Figure 3.2-44 Add Printer Driver Wizard**

3. Select the Processor and click “Next”.

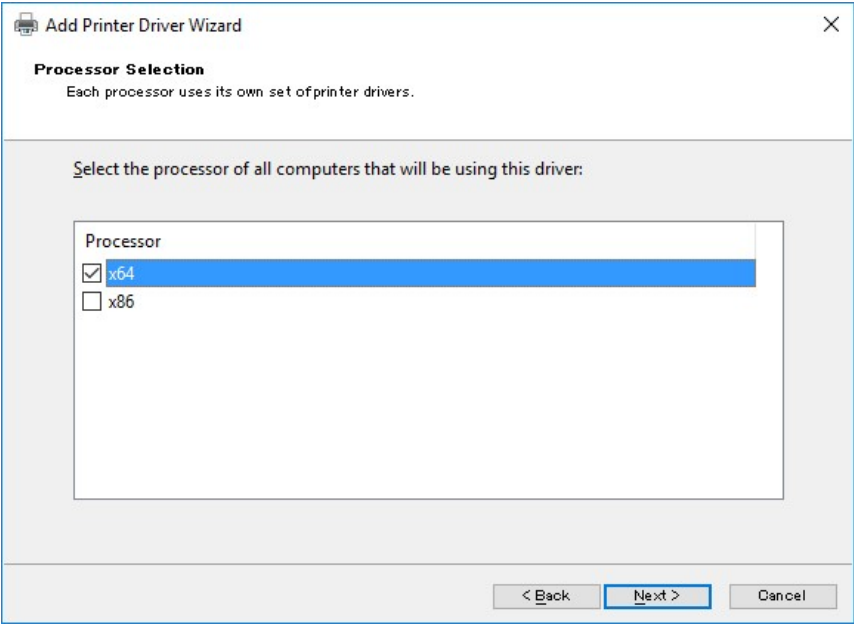


Figure 3.2-45 Processor Selection

4. Click “Have Disk”.

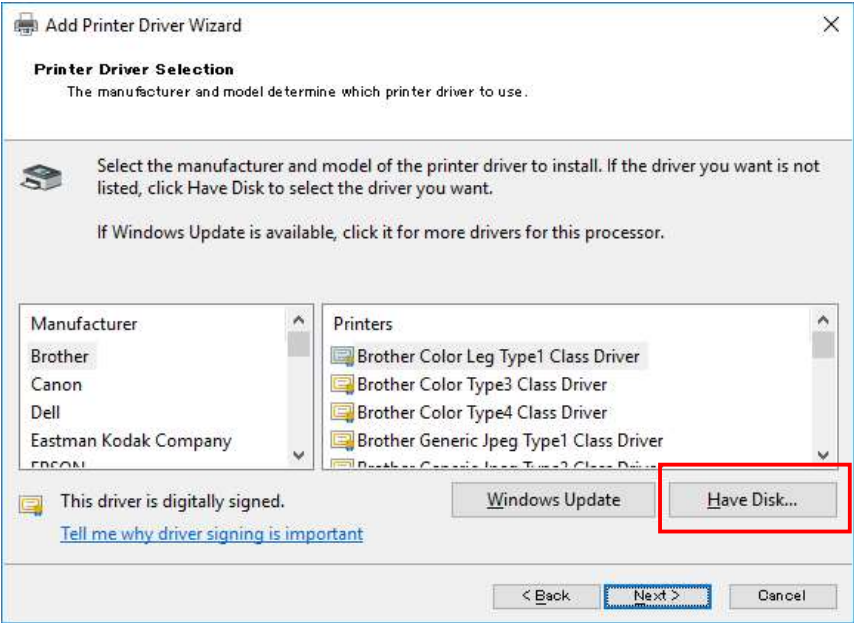


Figure 3.2-46 Printer Driver Selection

5. Click “Browse”.

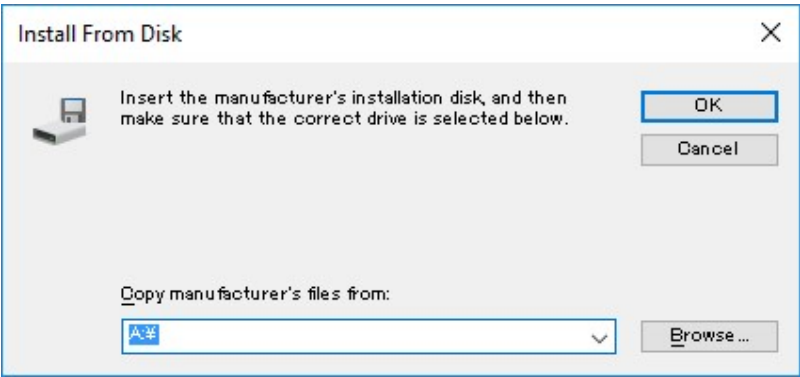


Figure 3.2-47 Install From Disk

6. Access the driver storage location, select “KOBxxK\_01”, and click “Open”.

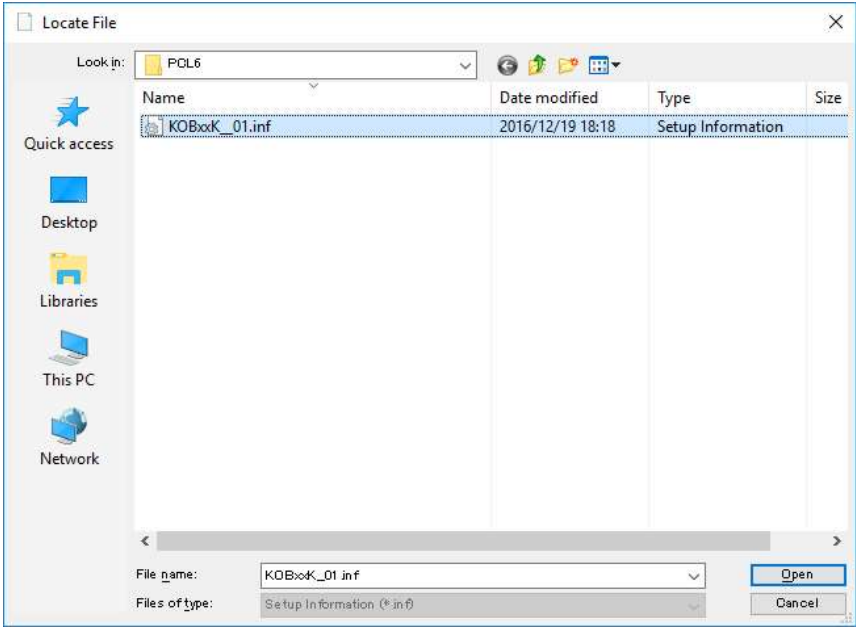


Figure 3.2-48 Locate File

7. Click “OK”.

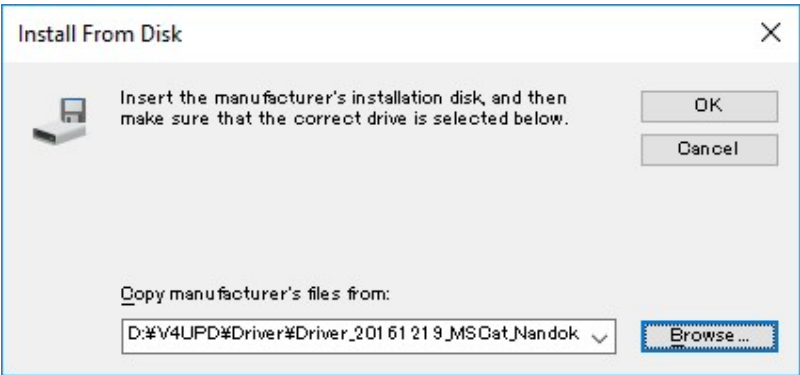


Figure 3.2-49 Install From Disk

8. Confirm that “KONICA MINOLTA Universal V4 PCL” is selected and click “Next”.

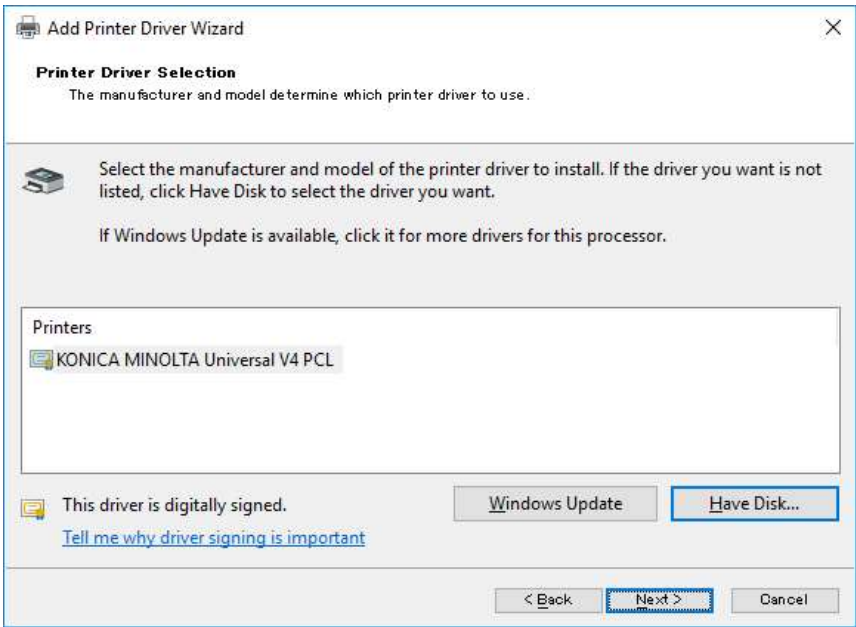


Figure 3.2-50 Printer Driver Selection

9. The installation is complete. Click “Finish” to close the dialog box.

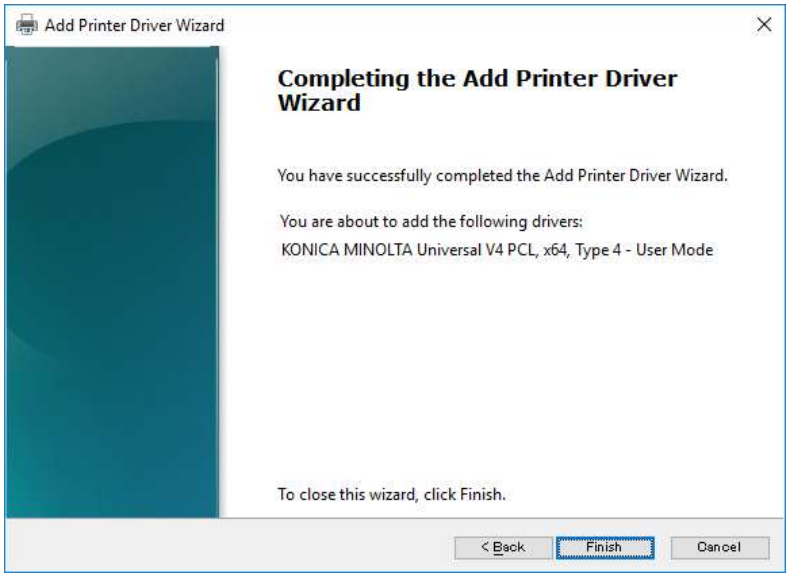


Figure 3.2-51 Add Complete

10. Click “OK” to close the Print Server Properties dialog box.

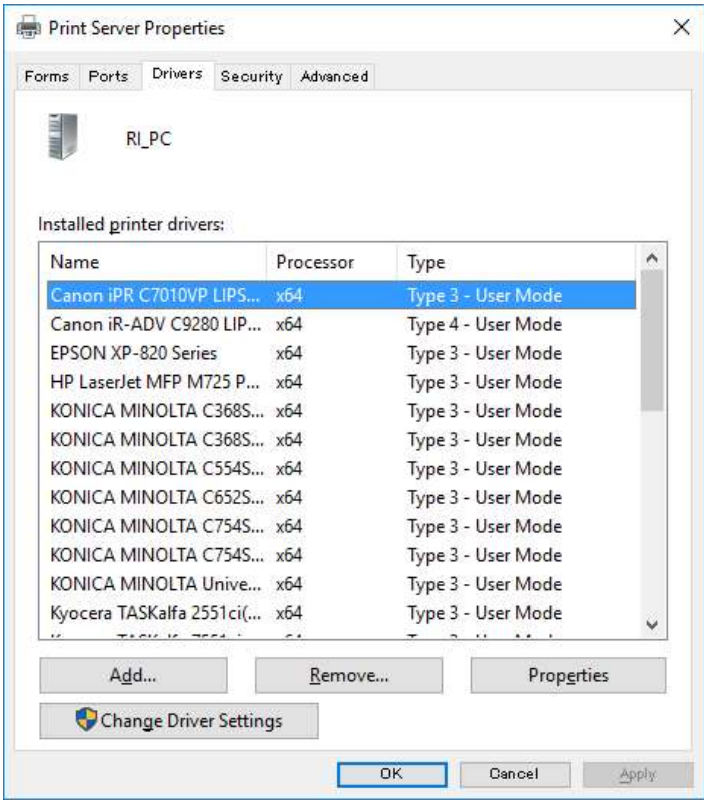


Figure 3.2-52 Print Server Properties



### 3.2.5. Installation of Windows Store Device App

Windows Store Device App, which is the Printing Preferences screen for the Windows Store Apps, will be downloaded from the Windows Store automatically and installed after installing the KONICA MINOLTA V4 Universal Print Driver. After installation is completed, you can check KONICA MINOLTA Print Experience from the Start Menu of Windows.

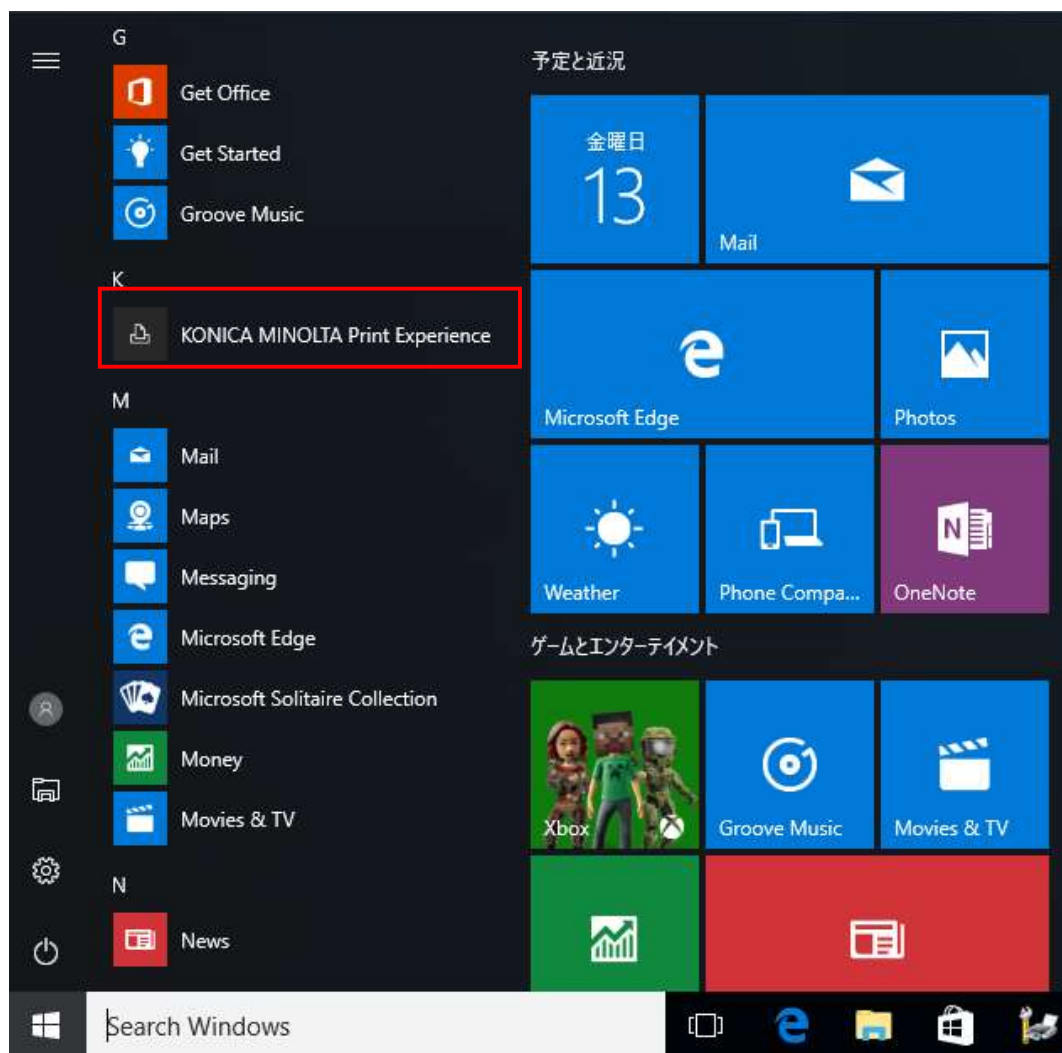


Figure 3.2-53 Start Menu of Windows 10

If the Print Experience do not download automatically, check the followings.

- You are connecting to the Internet.
- You have access to the Windows store.

### 3.3. Uninstallation

#### 3.3.1. If You Installed the Software Using the Included Installer

If you have installed UPD using the included installer, then the uninstaller is also installed on your operating system. Use that to uninstall the software.

1. Use the following method to start uninstaller.  
Select “Control Panel” -> “Programs and Features” and double click “KONICA MINOLTA Universal V4 PCL”.
2. Print Queue and Printer Driver, which can be deleted will be displayed. Check on what you want to delete and click “Next”.

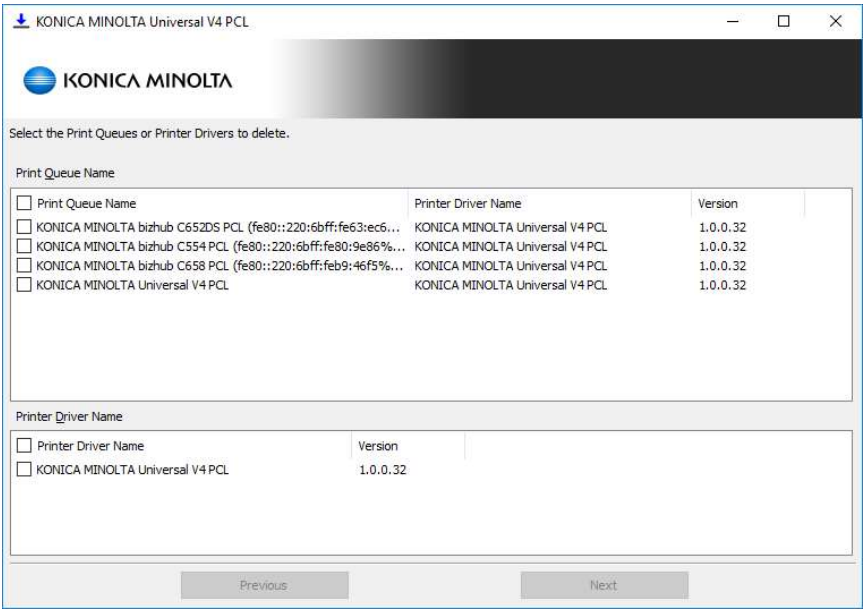


Figure 3.3-1 Uninstall target selection dialog box

3. If you selected to delete Printer Driver, all Print Queues that use the Printer Driver will be deleted.

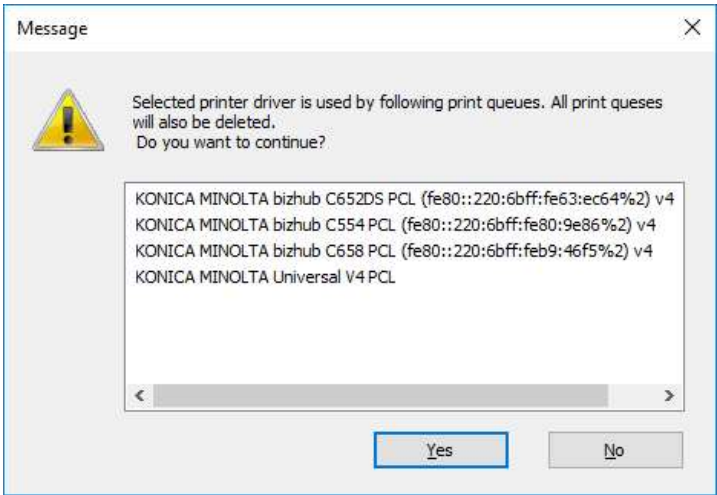


Figure 3.3-2 Uninstall impact notification dialog box

4. The confirmation dialog of uninstallation will be displayed.

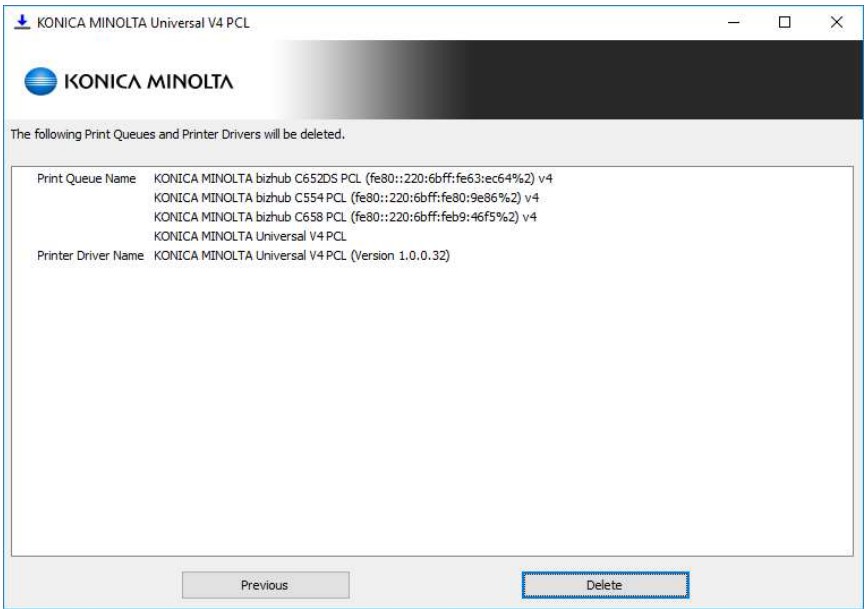


Figure 3.3-3 Uninstallation Details Confirmation dialog box

5. Progress of the Uninstallation will be displayed.

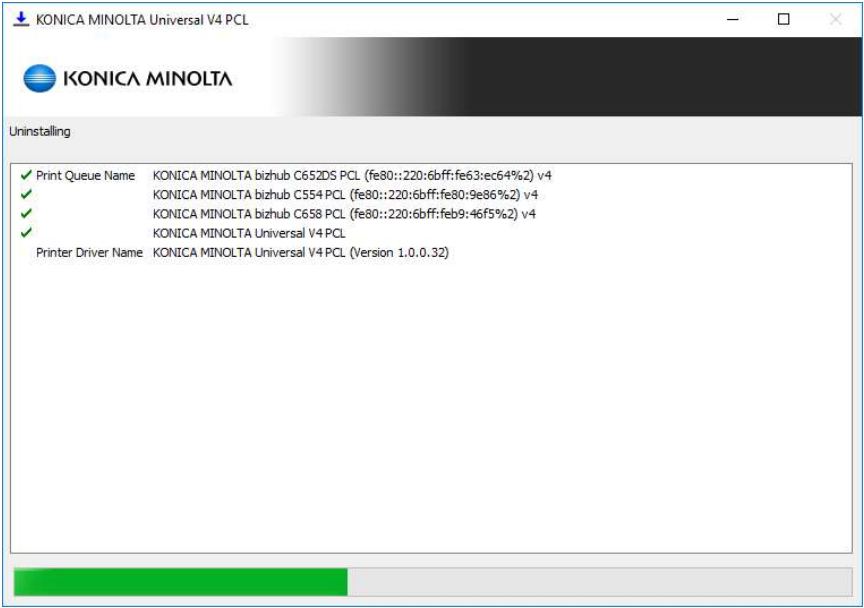


Figure 3.3-4 Uninstalling dialog box

6. The uninstallation is complete.

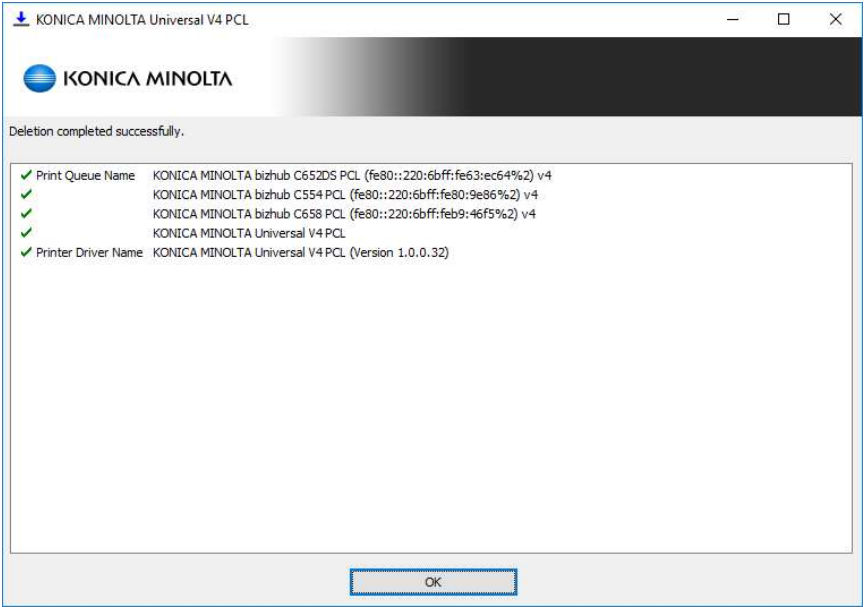


Figure 3.3-5 Uninstallation Complete dialog box

### 3.3.2. Manual Uninstallation

If you installed UPD manually, you must uninstall it manually by following the procedure below.

1. Delete all print queues using the driver of “KONICA MINOLTA Universal V4 PCL” from the “Devices and Printers” folder.
2. Delete “KONICA MINOLTA Universal V4 PCL” from the “Drivers” tab of the “Print Server Properties” dialog box.

### 3.3.3. Uninstallation in Point and Print environment

When using Point and Print, the driver needs to be removed also from the client side. Follow the steps below to remove the driver.

1. Open the “Devices and Printers” folder on client PC.
2. Delete the print queue of the shared V4 UPD.
3. Delete “KONICA MINOLTA Universal V4 PCL” from the “Drivers” tab of the “Print Server Properties” dialog box.

### 3.3.4. Uninstallation of Windows Store Device App

The method of uninstalling the Windows Store Device App is the same as other Windows Store Apps. On the Start Menu of Windows, find “KONICA MINOLTA Print Experience” and right click. Select “Uninstall” from the displayed menu.

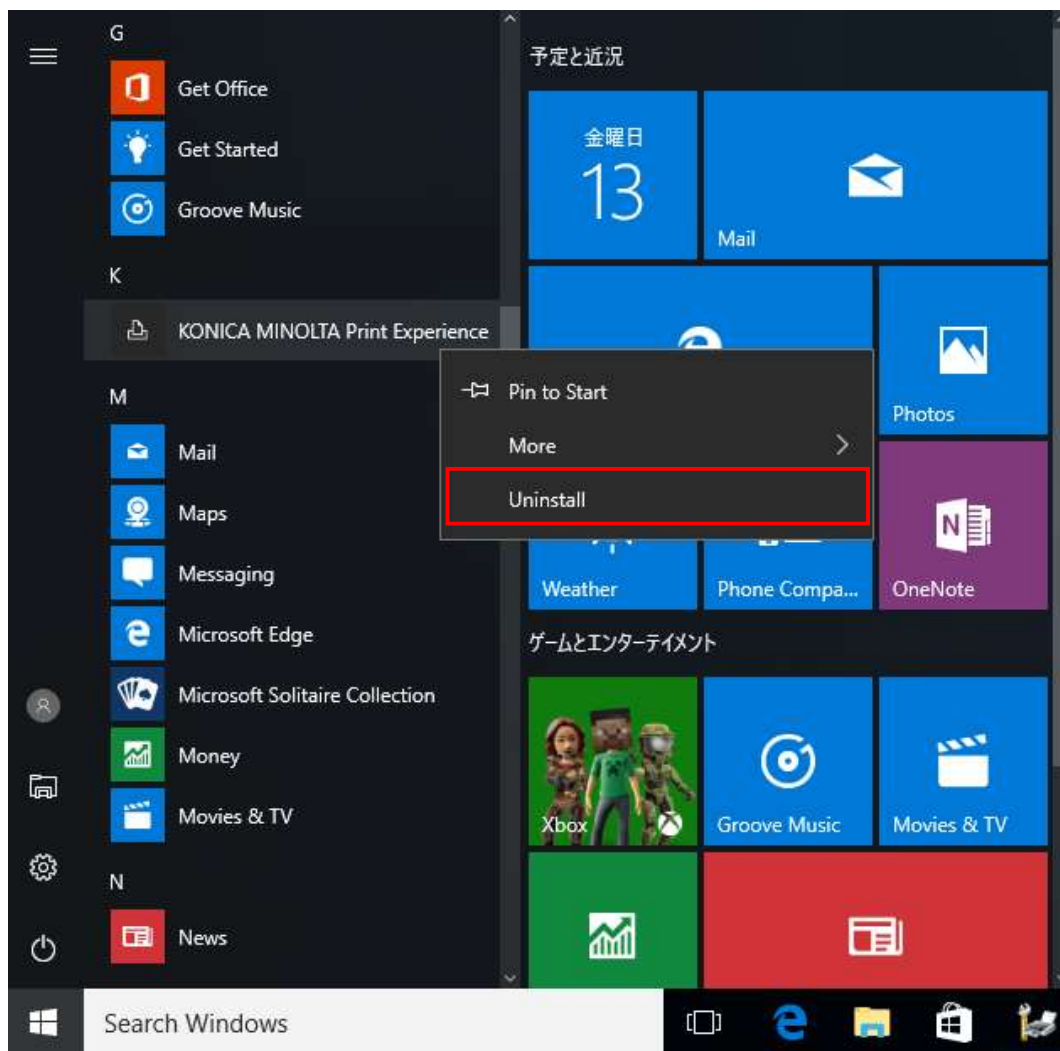


Figure 3.3-6 Start Menu of Windows 10

## 4. V4 Universal Print Driver's UI

### 4.1. Printing Preferences UI

KONICA MINOLTA V4 Universal Print Driver has a new UI that supports touch operation. There are two screens: the Printing Preferences for the desktop applications and the Printing Preferences for the Windows Store Apps.

#### Printing Preferences for the desktop applications

The Printing Preferences for the desktop applications consists of the following areas.

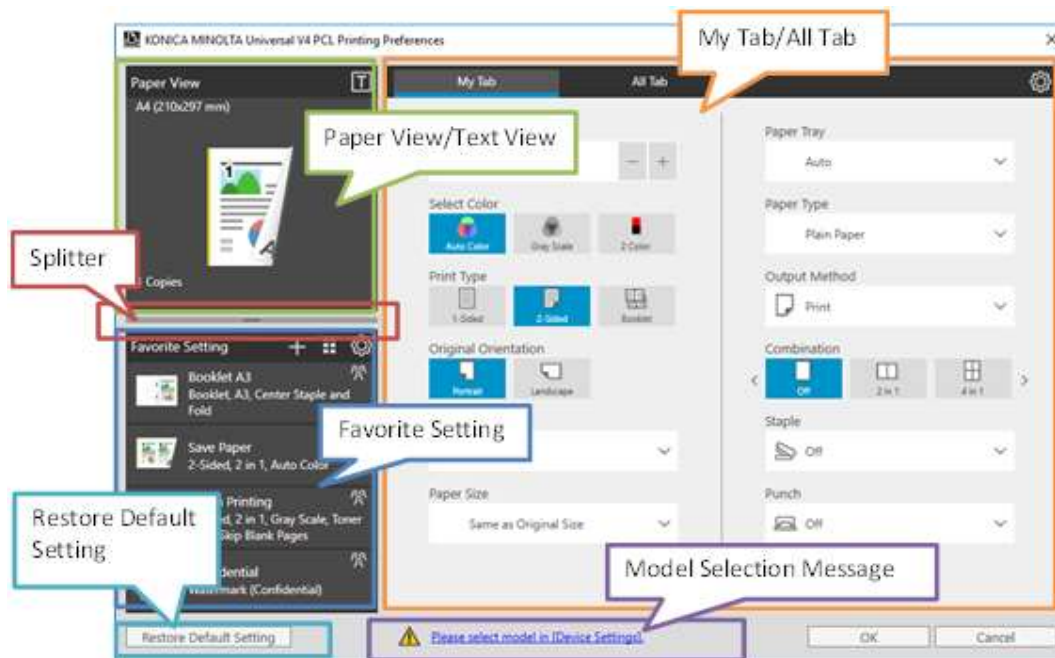


Figure 4.1-1 Printing Preferences for the desktop applications – My Tab

The descriptions of each area are described below.

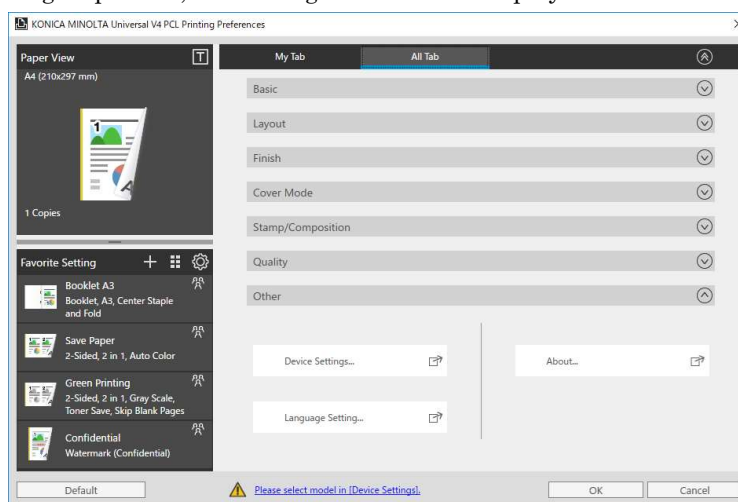
Area	Description
Paper View / Text View	You can switch to two screens: "Paper View" and "Text View".
Favorite Setting	It is the same function as the conventional favorite setting.
My Tab / All Tab	<ul style="list-style-type: none"> <li>You can switch to two screens: "My Tab" and "All Tab".</li> <li>"My Tab" is the same function as the conventional My Tab.</li> <li>On the "All Tab" screen, you can set all print settings.</li> </ul>
Splitter	You can adjust the height of "Paper View / Text View" and "Favorite Setting".
Restore Default Setting	Change all settings except the following items to default values. <ul style="list-style-type: none"> <li>Settings of child dialog.</li> <li>Items and layout of Favorite Settings.</li> <li>Items and layout of My Tab.</li> </ul>
Model Selection Message	<ul style="list-style-type: none"> <li>A warning message will be displayed if the model is not selected or if the selected model is incorrect.</li> <li>The Model Selection Dialog Box will be displayed if click the message.</li> </ul>

**Table 4-1 Descriptions of the Printing Preferences for the desktop applications**

The following screen will be displayed by clicking "All Tab".

In "All Tab", it is grouped into "Basic", "Layout", "Finish", "Cover Mode", "Stamp/Composition", and "Quality" and folded.

By clicking each group name, the setting value will be displayed.



**Figure 4.1-2 Printing Preferences for the desktop applications – All Tab**



### Printing Preferences for the Windows Store Apps

The Printing Preferences for the Windows Store Apps consists of the following areas.

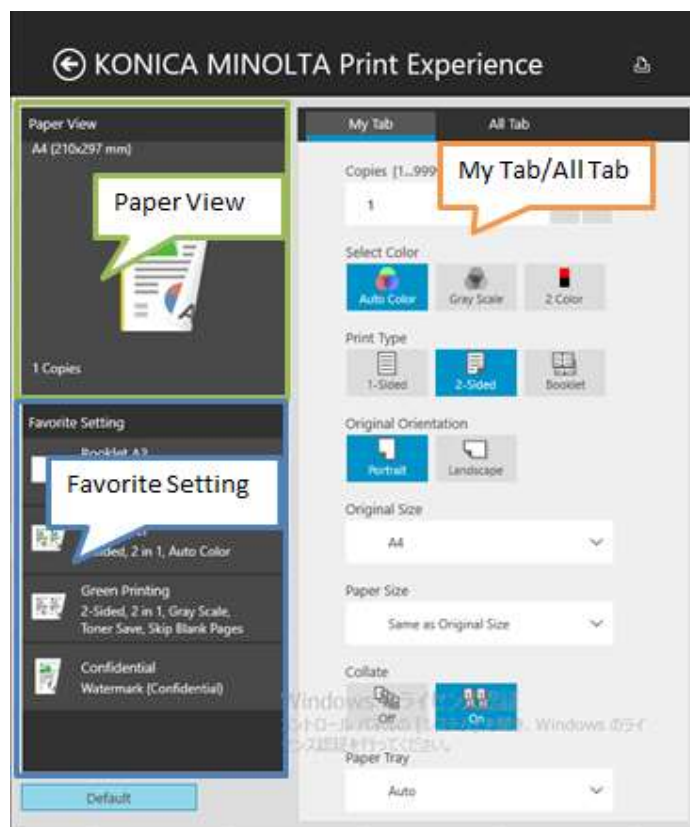


Figure 4.1-3 Printing Preferences for the Windows Store Apps – My Tab

Basically it is same as the Printing Preferences for the desktop applications. But the following functions are not supported.

- Text View
- Splitter
- Mode Selection Message

The following screen will be displayed by clicking “All Tab”.

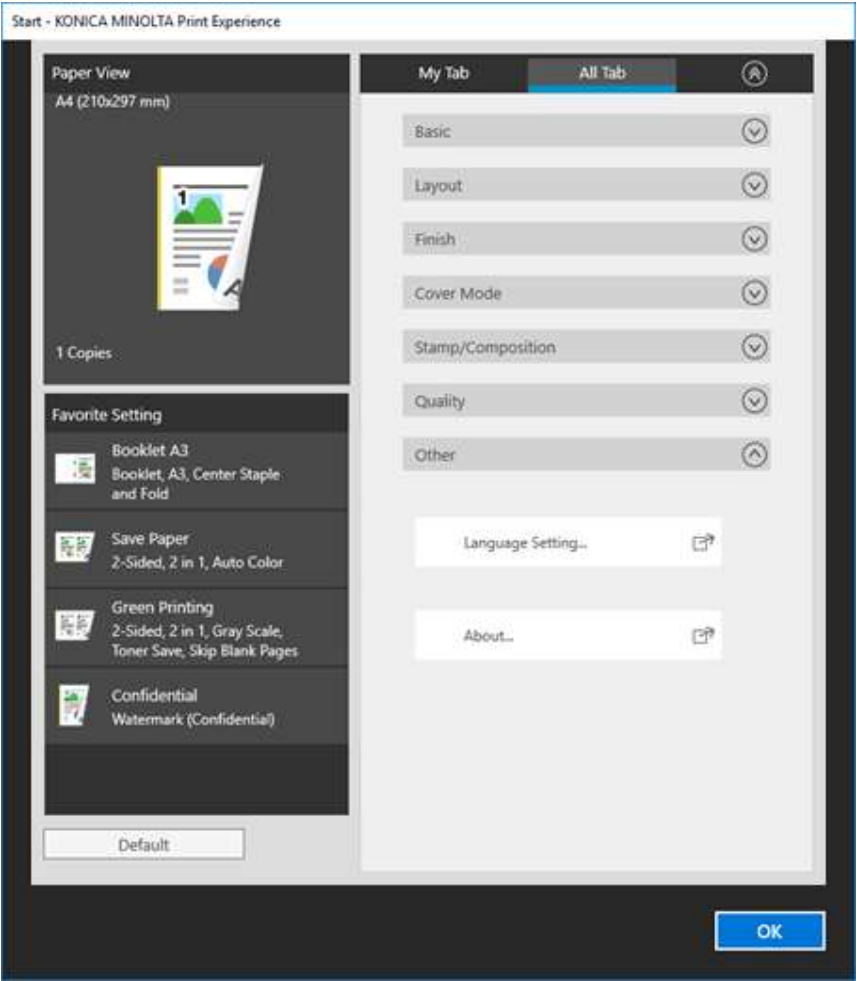


Figure 4.1-4 Printing Preferences for the Windows Store Apps – All Tab

## 4.2. Device Settings UI

You can select model and make settings for device in KONICA MINOLTA V4 Universal Print Driver.

Open the Device Settings dialog box from the Printing Preferences for the desktop applications by the following procedures.

1. Open the Printing Preferences for the desktop applications.
2. Click “All Tab”.

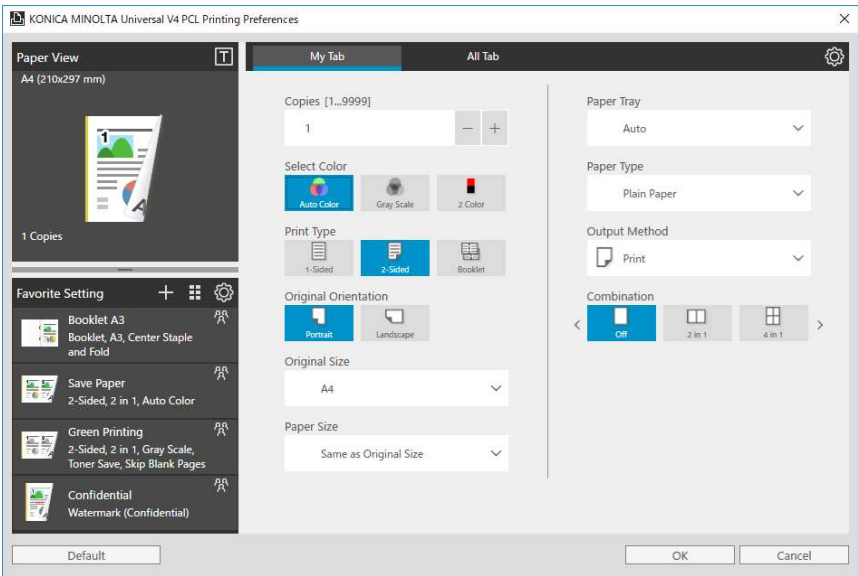


Figure 4.2-1 Printing Preferences for the desktop applications – My Tab

3. Click “Device Settings” button in the “Other” group.

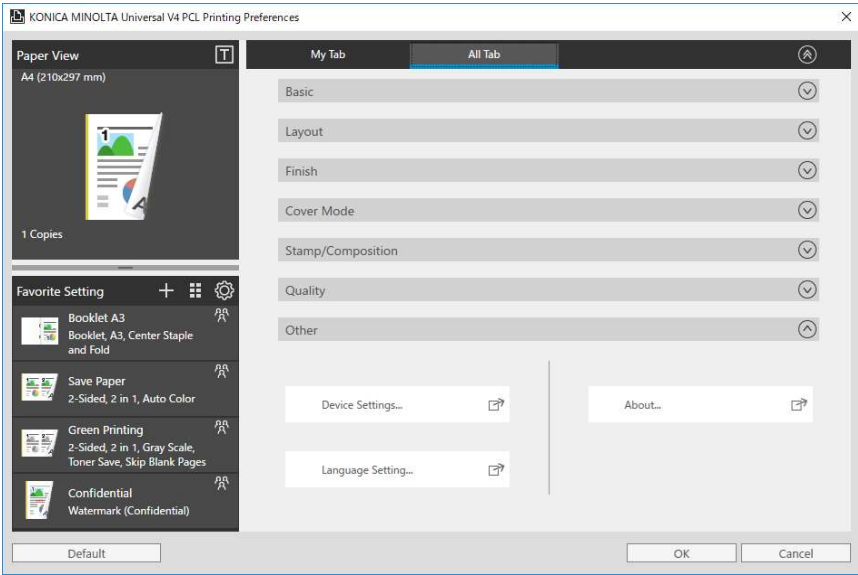


Figure 4.2-2 Printing Preferences for the desktop applications – All Tab

4. Confirmation dialog box will be displayed. Select “Yes” to save the current print settings, or “No” if you do not want to save them.

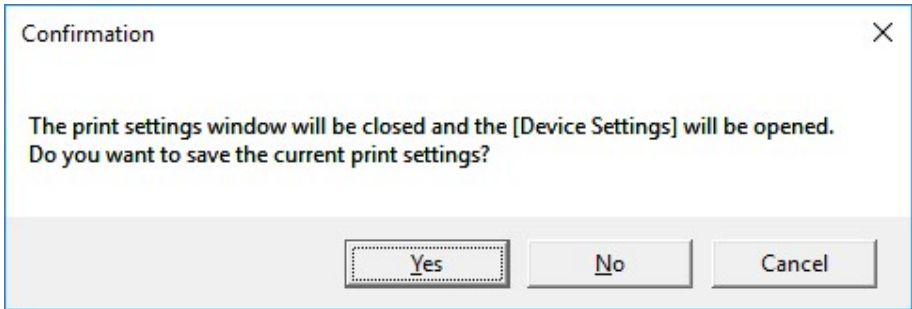


Figure 4.2-3 Confirmation

5. Device Settings dialog box is displayed.

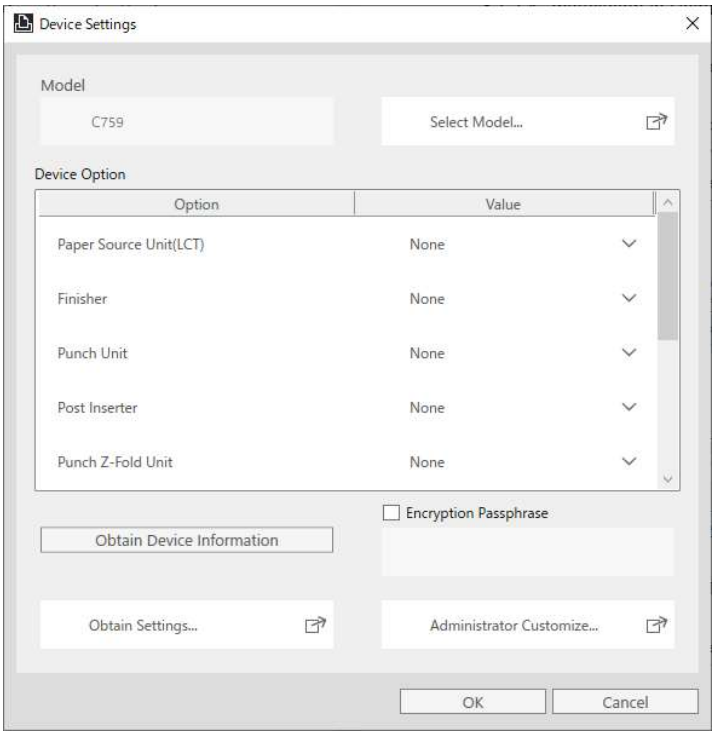


Figure 4.2-4 Device Settings

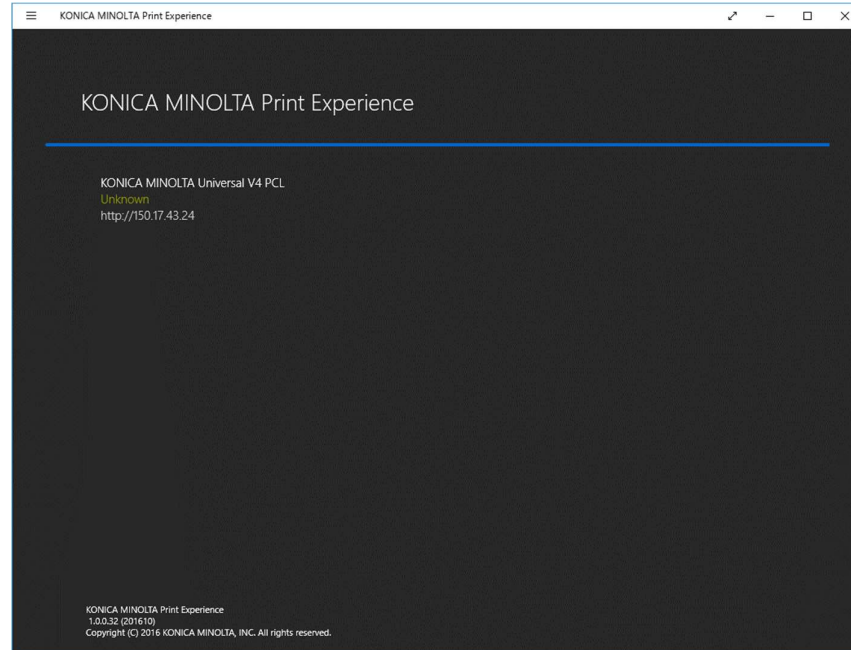
The descriptions of the settings in Device Settings are described below.

Parameter	Description
Model	Display the model name selected.
Select Model	Pop up the Model Selection dialog box.
Device Option	Displayed the information of device options.
Option	Display the options that can be set.
Value	Display the set value of each option.
Obtain Device Information	Obtain information from the device and apply it to “Device Option” and “Encryption Passphrase”.
Encryption Passphrase	Specify whether to set a user-defined encryption Passphrase.
Obtain Settings	Pop up the Obtain Settings dialog box.
Administrator Customize	Pop up the Admin Configuration dialog box.

**Table 4-2 Descriptions of the Device Settings dialog box**

### 4.3. Start Experience UI

The following screen will be displayed when open the KONICA MINOLTA Print Experience.



**Figure 4.3-1 KONICA MINOLTA Print Experience screen**

A list of printers using the KONICA MINOLTA V4 Universal Print Driver is displayed. If the URL is displayed, printer information will be displayed from browser by clicking it.

## 5. Using V4 Universal Print Driver

### 5.1. Changing the model

In KONICA MINOLTA V4 Universal Print Driver, you can change the model to be used from the driver UI.

1. Open the Printing Preferences for the desktop applications.

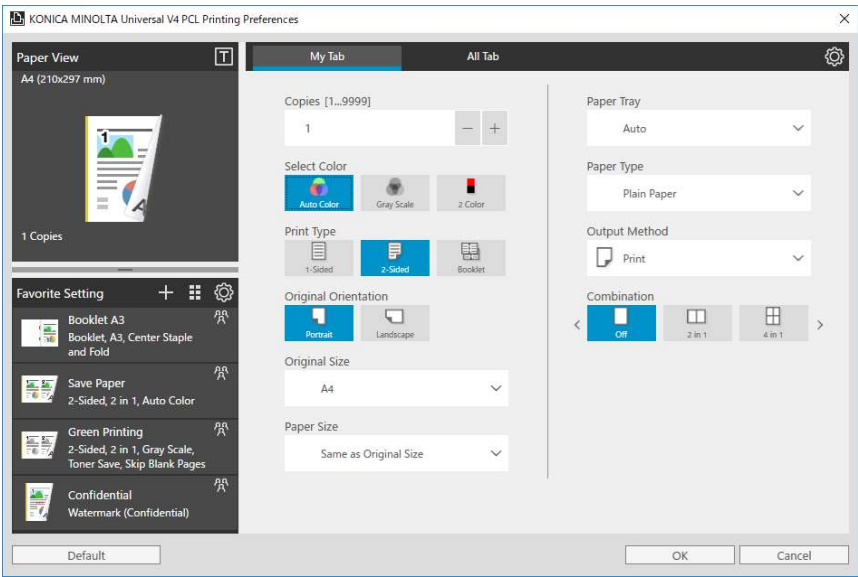


Figure 5.1-1 Printing Preferences for the desktop applications – My Tab

2. Click “Device Settings” button in the “Other” group of the “All Tab”.

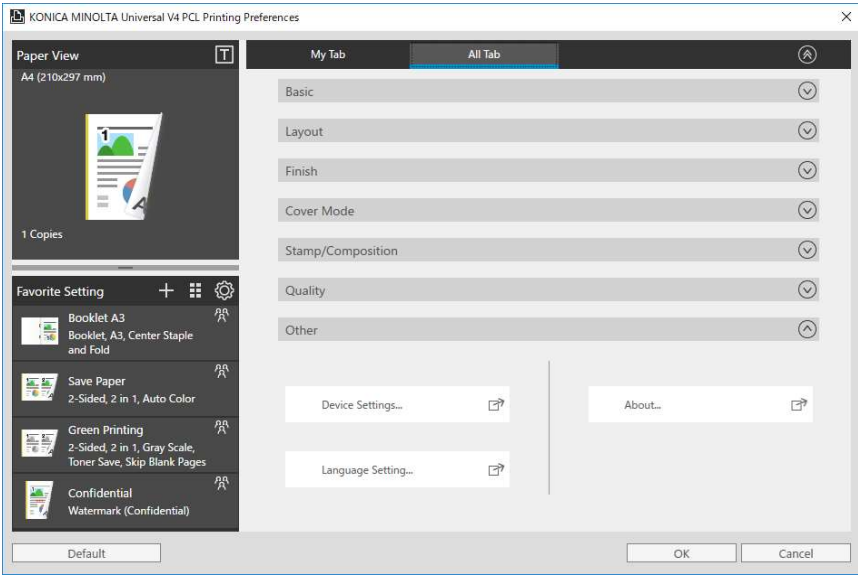


Figure 5.1-2 Printing Preferences for the desktop applications – All Tab

3. Click the “Select Model” button in Device Settings dialog box.

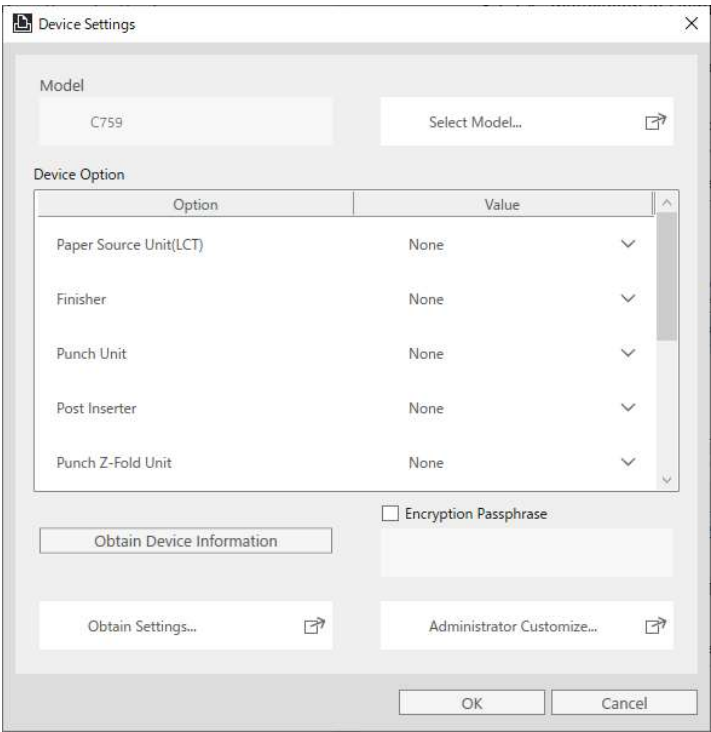


Figure 5.1-3 Device Settings dialog box

4. Select a model in Model Selection dialog box and Click “OK”. If you want to acquire the model automatically, Click “Auto”.

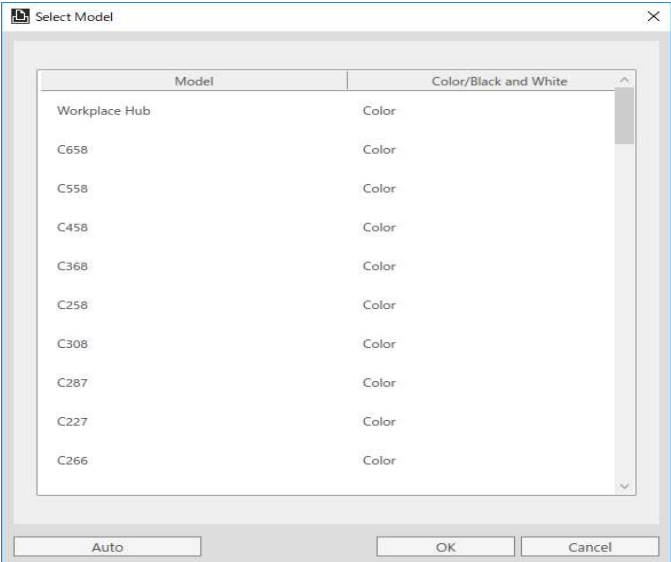


Figure 5.1-4 Model Selection dialog box

5. Click “OK” to close the Device Settings dialog box. The settings of the selected model will be reflected when you open the Printing Preferences next time.

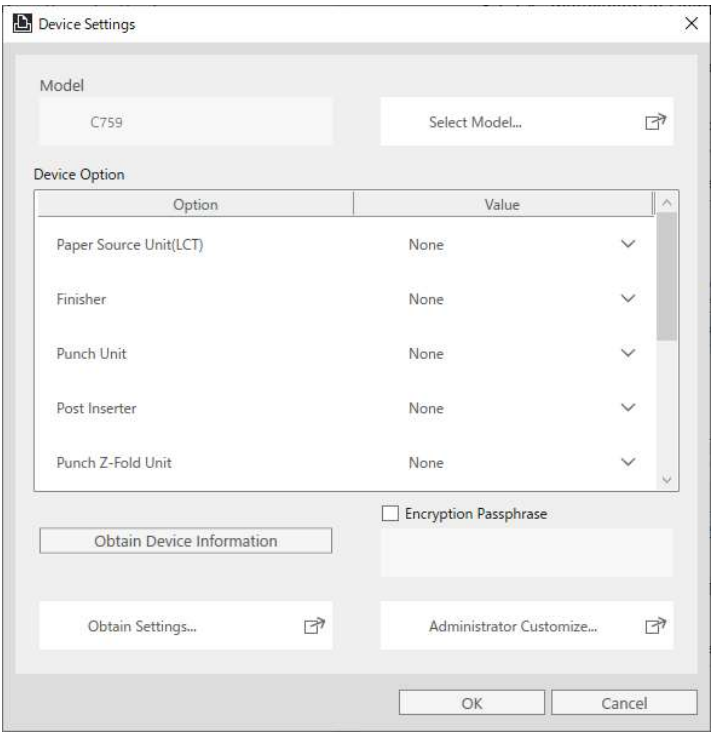


Figure 5.1-5 Device Settings dialog box



## 5.2. Changing the display language

In KONICA MINOLTA V4 Universal Print Driver, you can change the display language from Printing Preferences.

### Change the display language from Printing Preferences for the desktop applications

1. Open the Printing Preferences for the desktop applications.

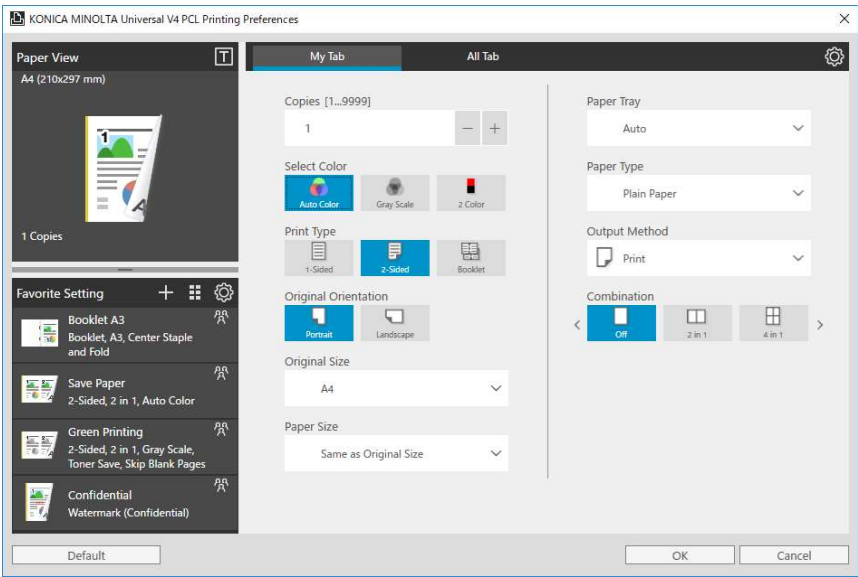


Figure 5.2-1 Printing Preferences for the desktop applications – My Tab

2. Click “Language Setting” button in the “Other” group of the “All Tab”.

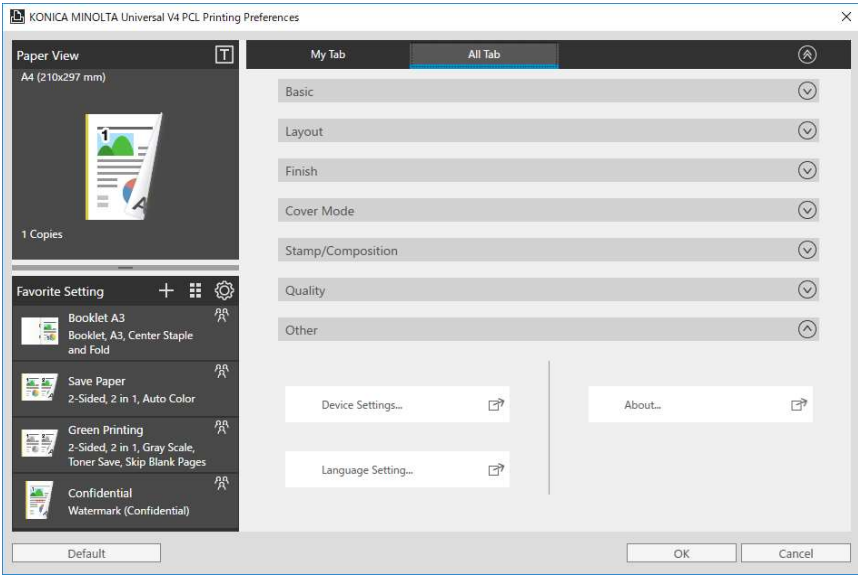
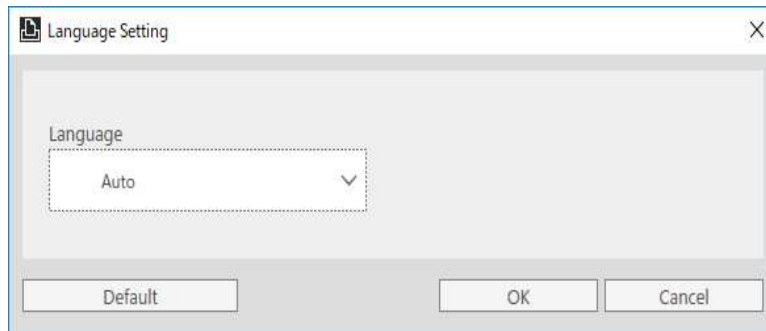


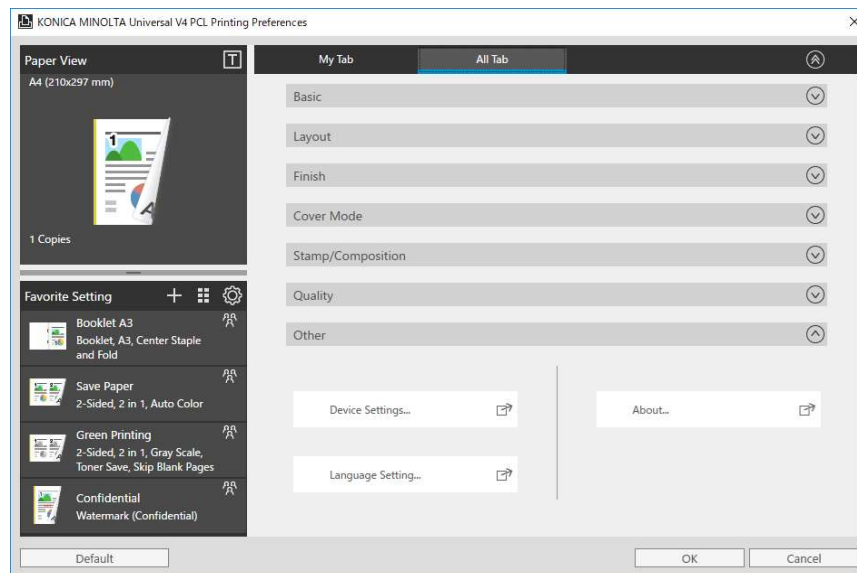
Figure 5.2-2 Printing Preferences for the desktop applications – All Tab

3. Set the display language on the Language Setting dialog box and click “OK” to close it.



**Figure 5.2-3 Language Setting dialog box**

4. Click “OK” to close the Printing Preferences. The display language will be changed when you open the Printing Preferences next time.



**Figure 5.2-4 Printing Preferences for the desktop applications – All Tab**

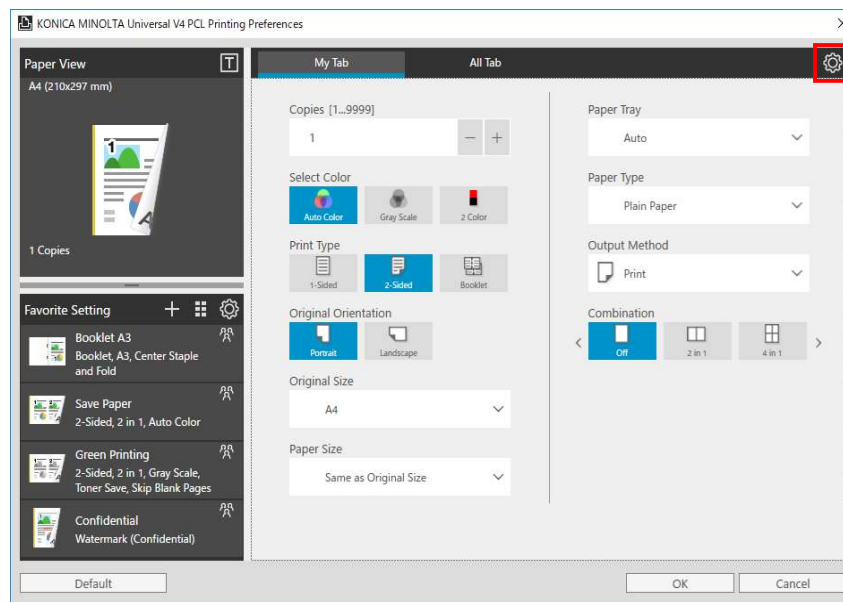
### **Change the display language from Printing Preferences for the Windows Store Apps**

The method of changing the displayed language in the Printing Preferences for the Windows Store Apps is same as the Printing Preferences for the desktop applications

### 5.3. Editing My Tab

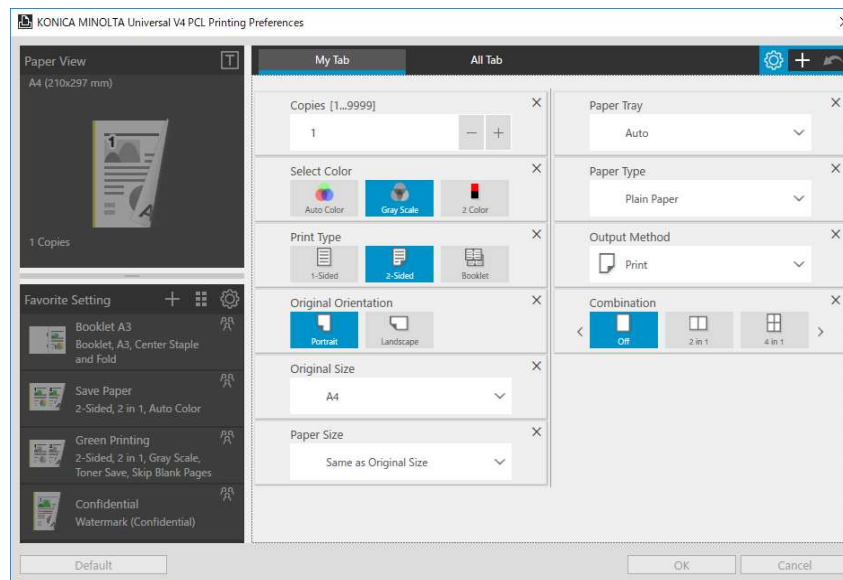
In KONICA MINOLTA V4 Universal Print Driver, you can edit My Tab screen and customize it.

1. Open the Printing Preferences for the desktop applications and click the gear icon in the upper right corner of the screen.



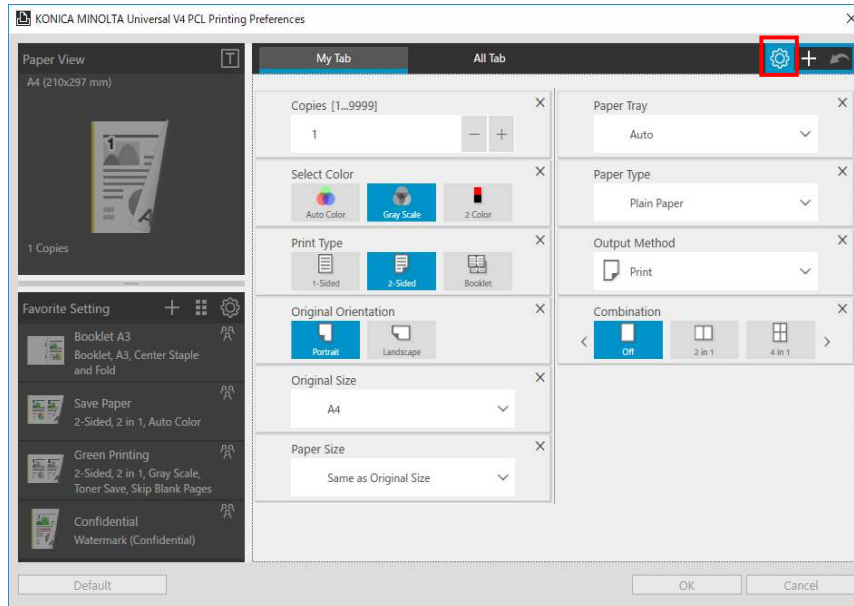
**Figure 5.3-1 Printing Preferences for the desktop applications – My Tab**

2. Entering the My Tab edit mode, you can add, delete, and change the items for your favorite.



**Figure 5.3-2 Edit My Tab**

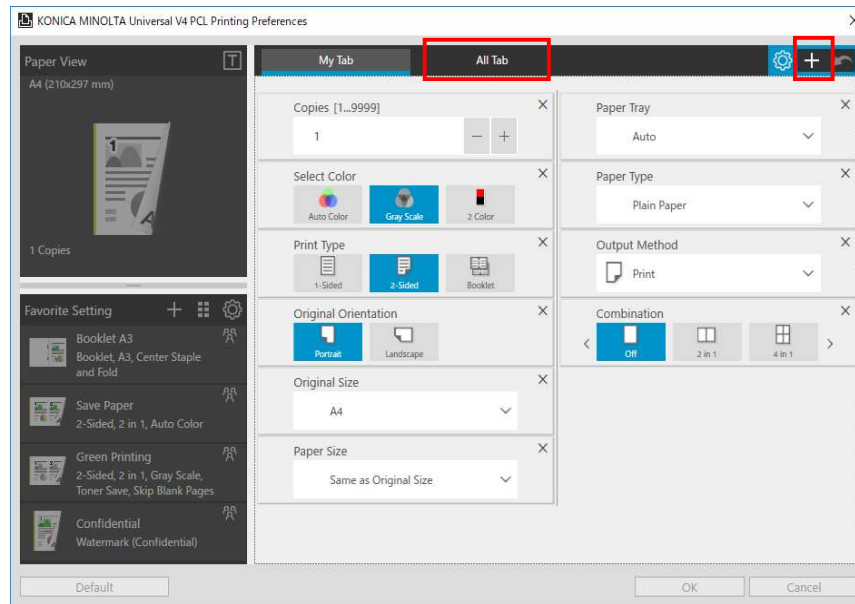
3. Click the gear icon again to save the edited content and end the edit mode of My Tab.



**Figure 5.3-3 Edit My Tab**

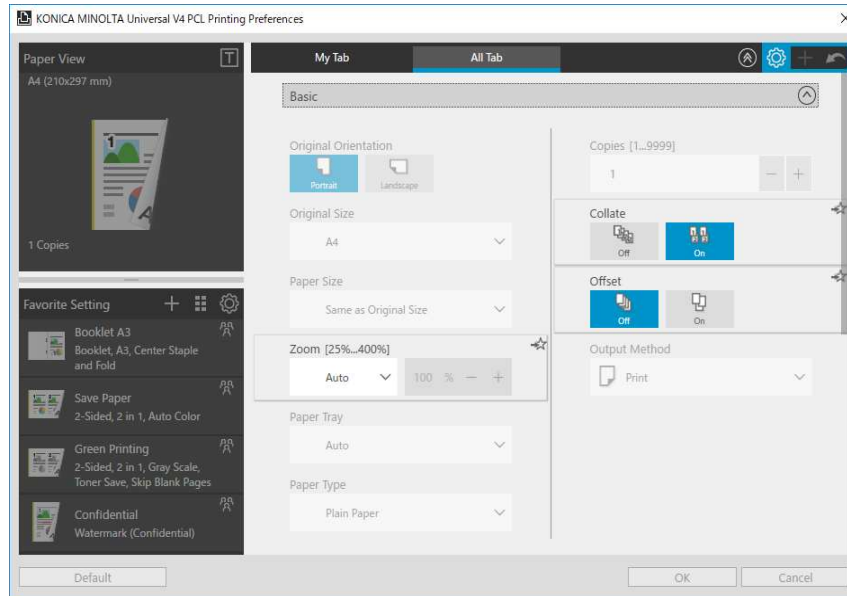
### 5.3.1. Adding My Tab

1. Entering the My Tab edit mode, click on the "+" icon in the upper right or click on "All Tab" tab.



**Figure 5.3-4 Printing Preferences for the desktop applications – My Tab**

2. Move to the "All Tab" tab. The print settings, which have been added on My Tab are shown to be gray.

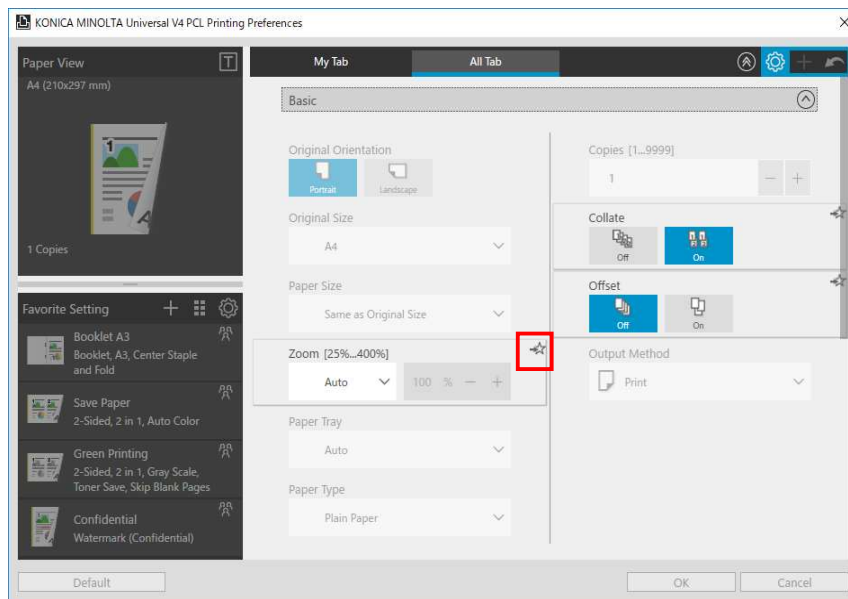


**Figure 5.3-5 Edit My Tab**

The following two methods can add print settings to My Tab.

**Method 1 Use the Add button to add**

- ① Click the [☆] icon on the top right of the selected item in All Tab.



**Figure 5.3-6 Edit My Tab**

② The print settings that have been clicked will be added to the My Tab and then it will be gray.

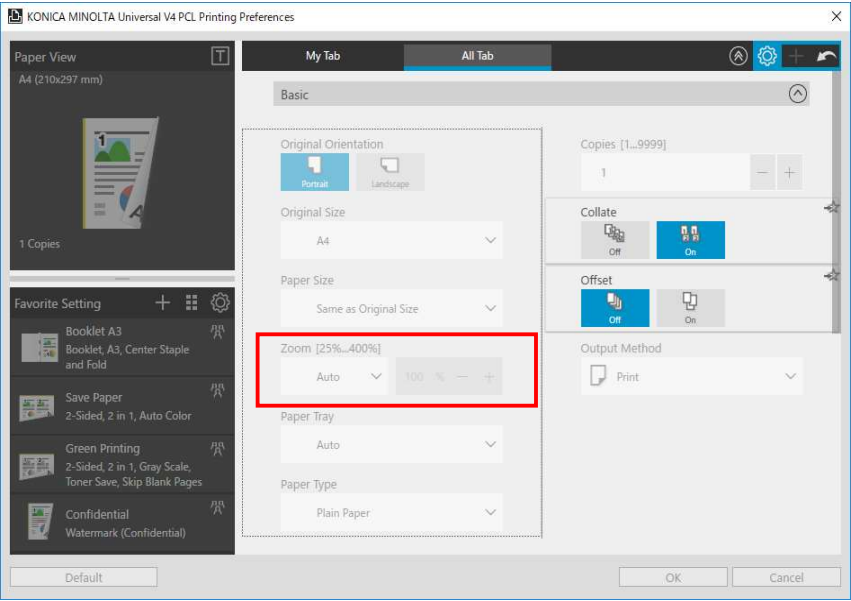


Figure 5.3-7 Edit My Tab

③ Click "My Tab" tab to confirm that the item have been added on the My Tab.

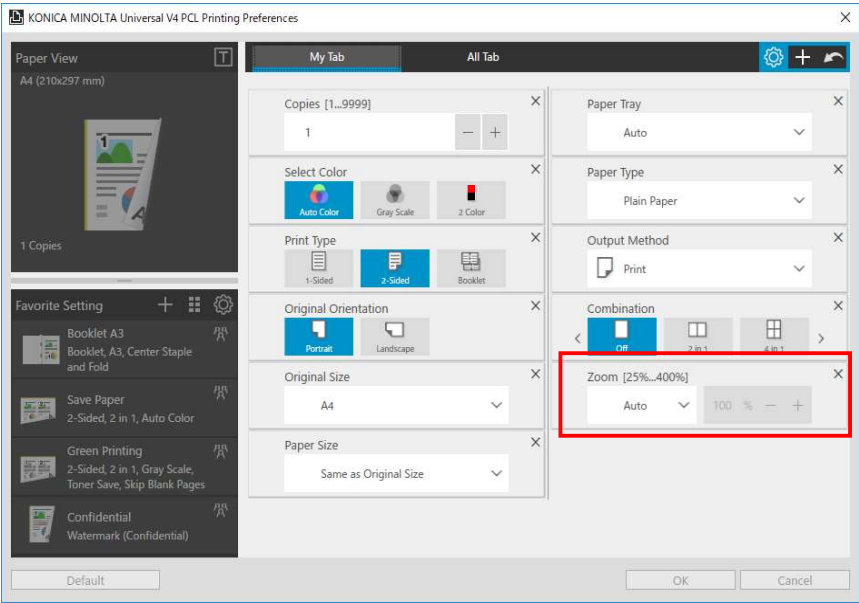
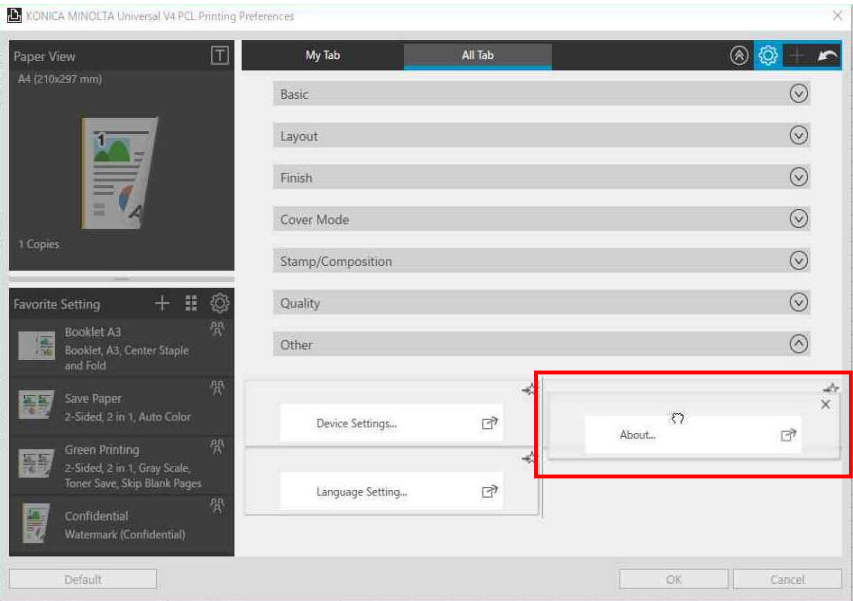


Figure 5.3-8 Edit My Tab

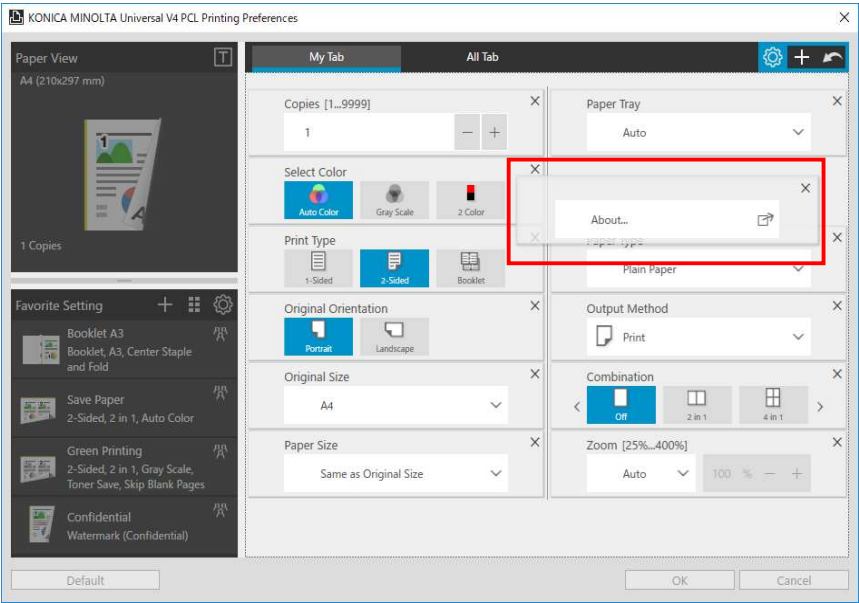
**Method 2 Drag and drop to add**

- ① Drag the print setting you want to add.



**Figure 5.3-9 Edit My Tab**

- ② Entering My Tab mode. Move the dragged item to the place as your like.



**Figure 5.3-10 Edit My Tab**

5.3.2. Deleting My Tab

1. Entering edit My Tab mode. Click the [X] icon of the selected item. Delete the selected item from My Tab.

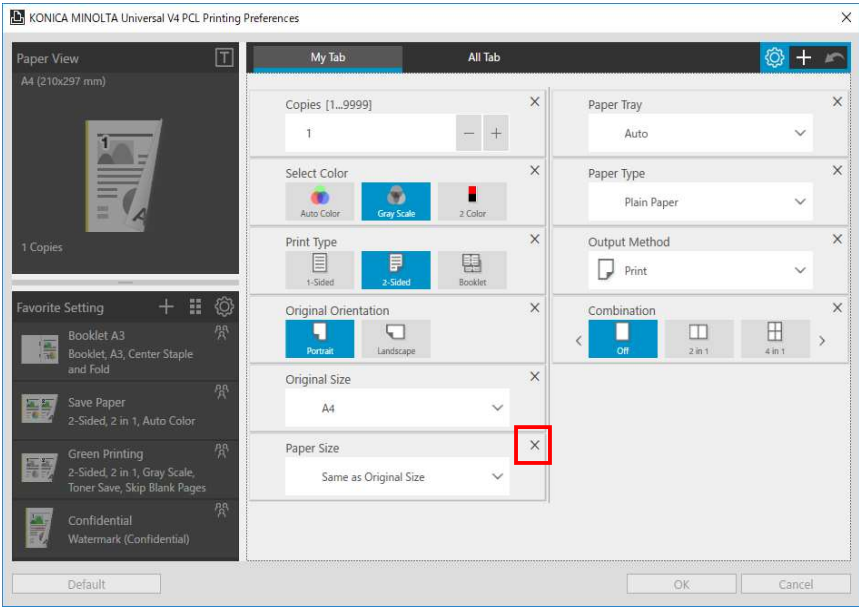


Figure 5.3-11 Edit My Tab

5.3.3. Moving My Tab

1. Entering edit My Tab mode. Drag the selected item in My Tab. Move the place of the item left/right/up/down.

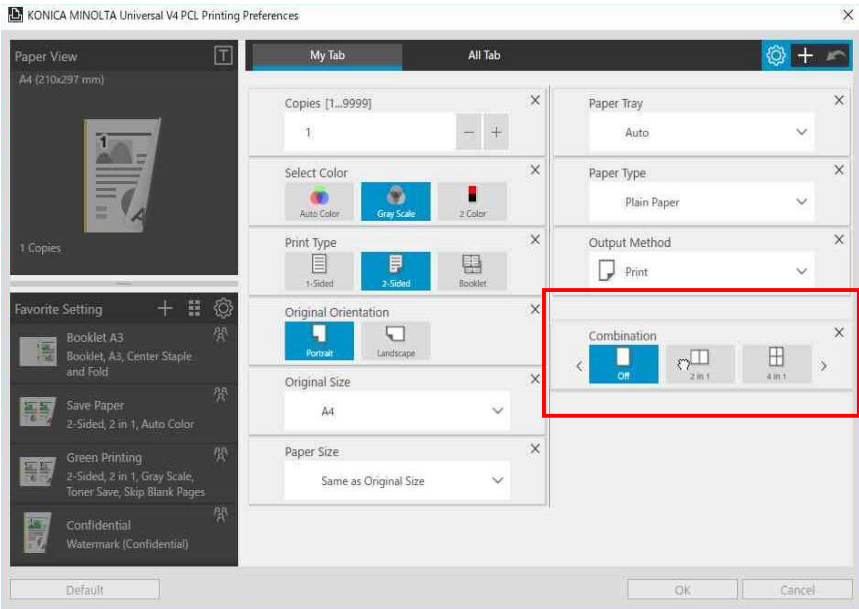


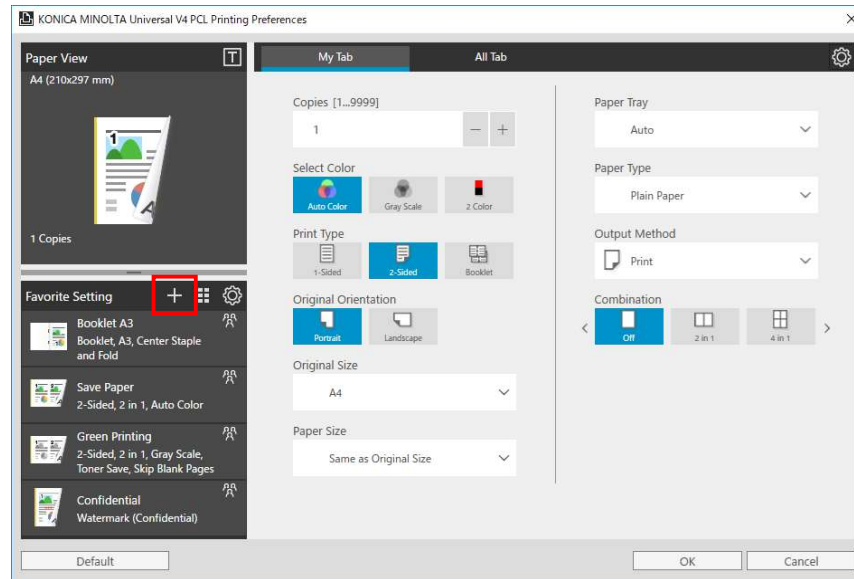
Figure 5.3-12 Edit My Tab



## 5.4. Adding Favorite Setting

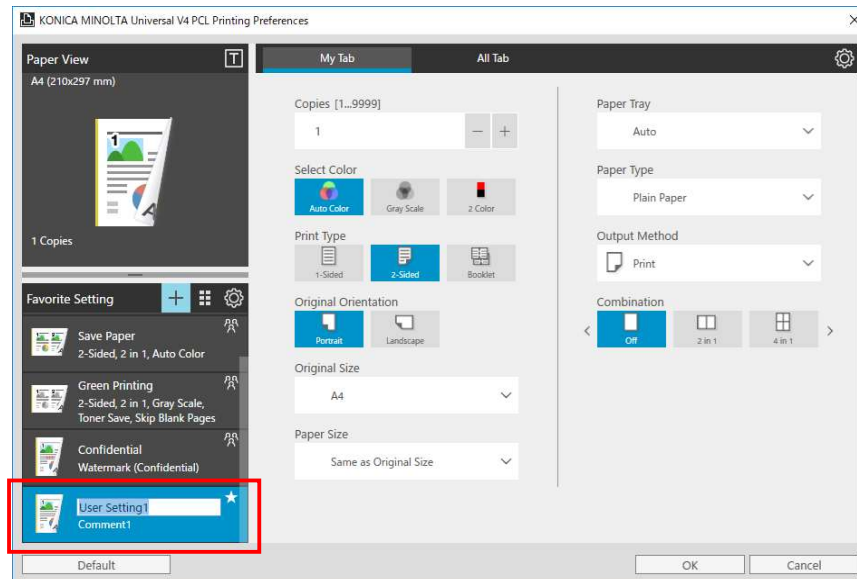
According to the following steps, you can add the print settings into the Favorite.

1. Open the Printing Preferences for the desktop applications and make print settings.
2. Click the “+” icon in the Favorite Setting area.



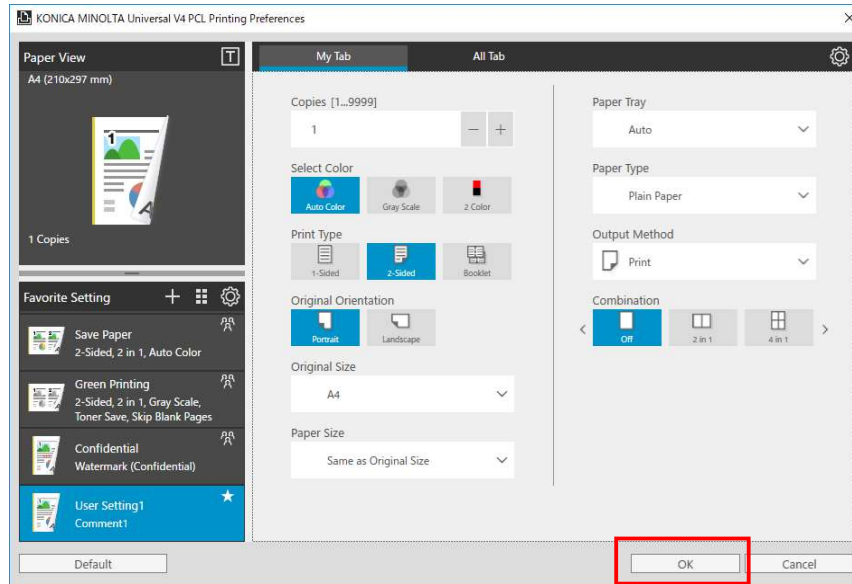
**Figure 5.4-1 Printing Preferences for the desktop applications –Favorite**

3. The current printing settings have been added into the Favorite. The name and comment are default and can be modified by clicking 2 times.



**Figure 5.4-2 Add Favorite Setting**

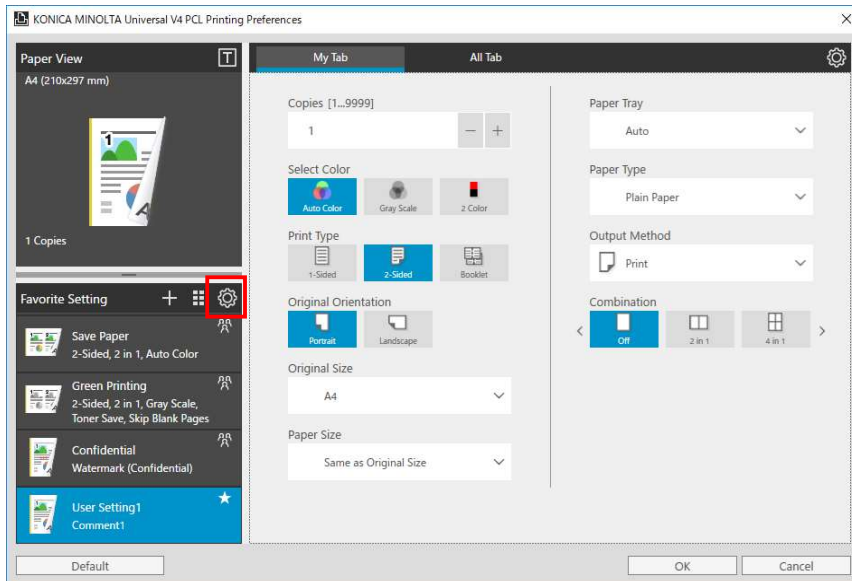
- Click "OK" button on the print setting. After the screen is closed, the added Favorite will be saved.



**Figure 5.4-3 Printing Preferences for the desktop applications –Favorite**

## 5.5. Editing Favorite Setting

- Open the Printing Preferences for the desktop applications and click the gear icon in the Favorite Setting area.



**Figure 5.5-1 Printing Preferences for the desktop applications – My Tab**

2. Entering the Favorite Setting edit mode, you can delete, edit print setting and change configures.

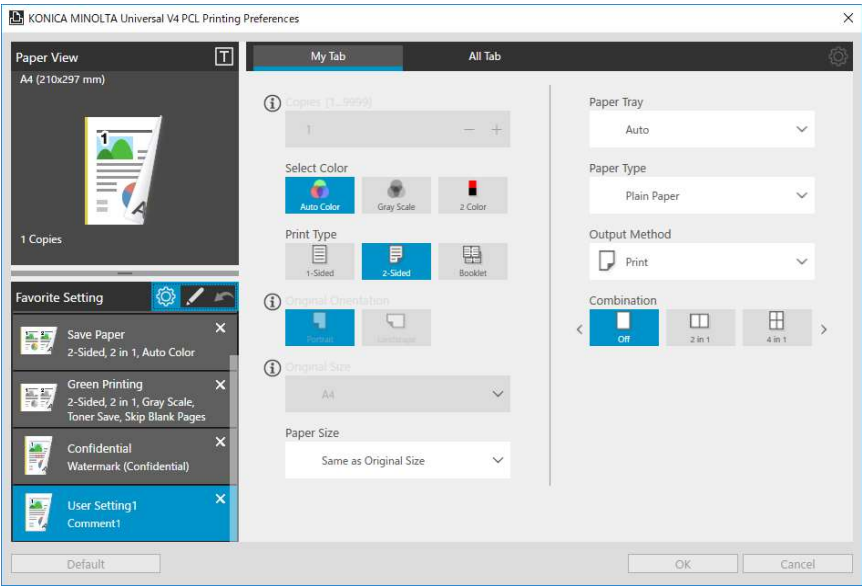


Figure 5.5-2 Favorite Setting

3. Click the gear icon again to save the edited content and end the edit mode of the Favorite Setting.

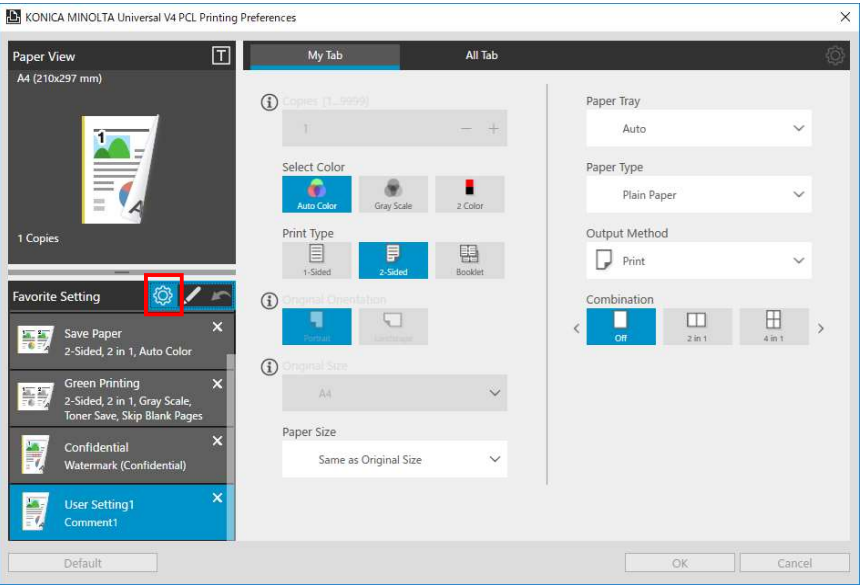


Figure 5.5-3 Favorite Setting

4. Click "OK" button on the print setting. After the screen is closed, the added Favorite will be saved.

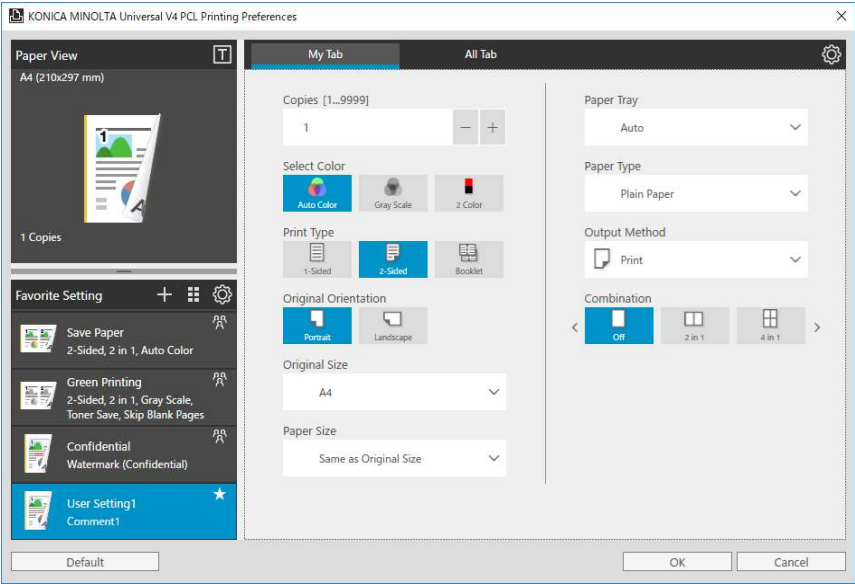


Figure 5.5-4 Favorite Setting

### 5.5.1. Deleting Favorite Setting

1. Entering edit Favorite Setting mode. Click the [×] icon of the selected Favorite. Delete the selected Favorite from Favorite Setting.

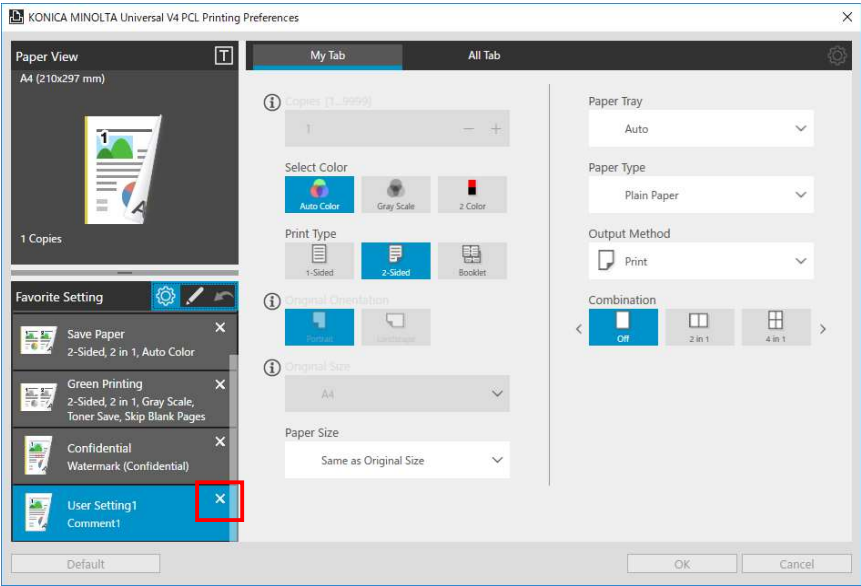


Figure 5.5-5 Favorite Setting

### 5.5.2. Moving Favorite Setting

1. Entering edit Favorite Setting mode. Drag the Favorite to move, moving the Favorite display position to the top / bottom.

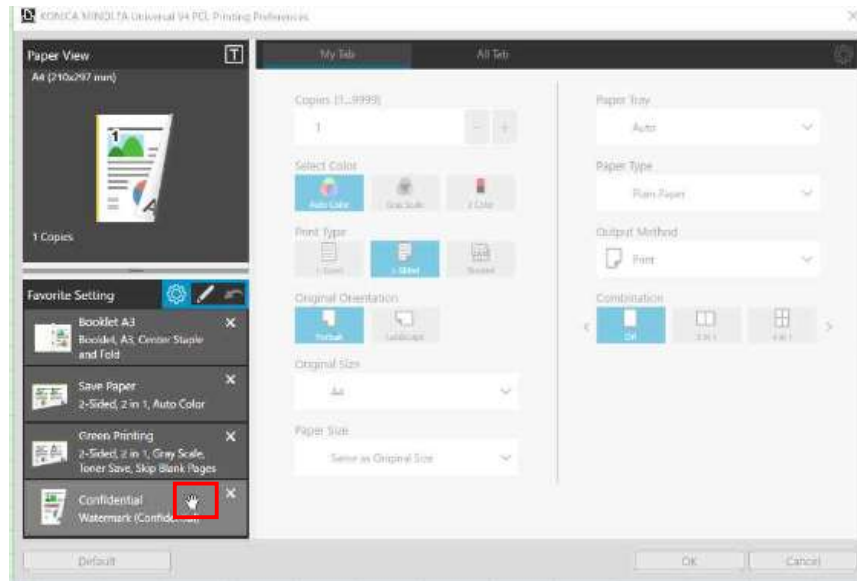


Figure 5.5-6 Favorite Setting

### 5.5.3. Editing Favorite Print Setting

1. Entering the Favorite Setting edit mode, after selecting one of the Favorite, the printed setting in the Favorite on the right side is reflected.

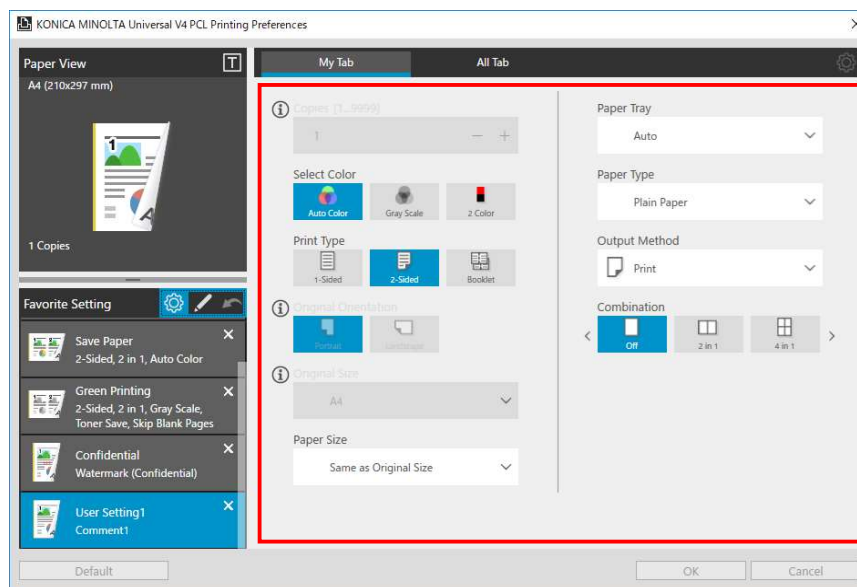
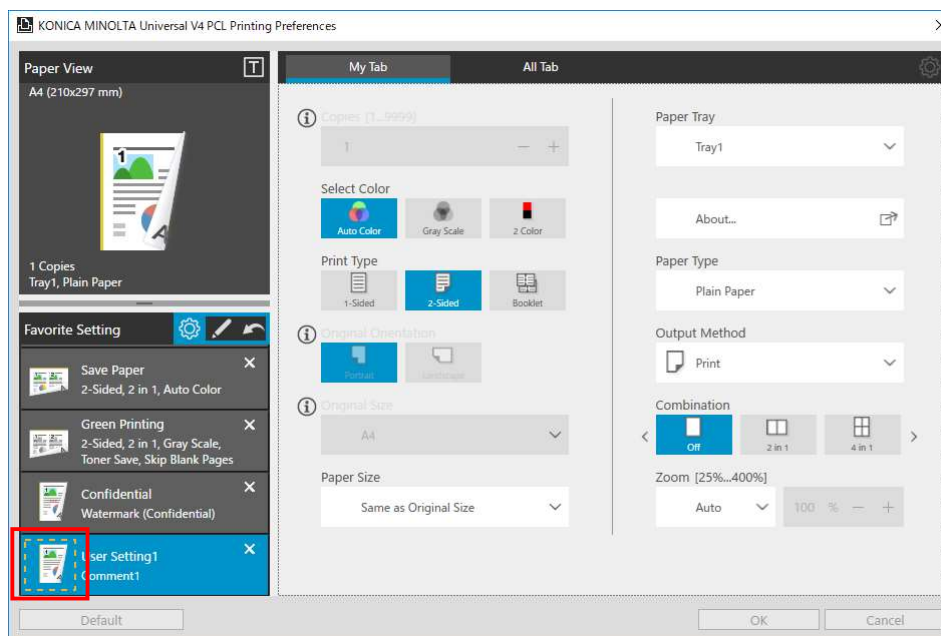


Figure 5.5-7 Printing Preferences for the desktop applications –Favorite

2. Select the favorite you want to edit, and if you have a print setting editing, the favorite icon shows the frame in the edit.

※The preset favorite cannot be edited.



**Figure 5.5-8 Favorite Setting**

3. The edit information will be update by ending the Edit mode.

5.5.4. Edit Favorite Setting

1. Entering the Favorite Setting edit mode. Click the pencil icon in the Favorite Setting screen.

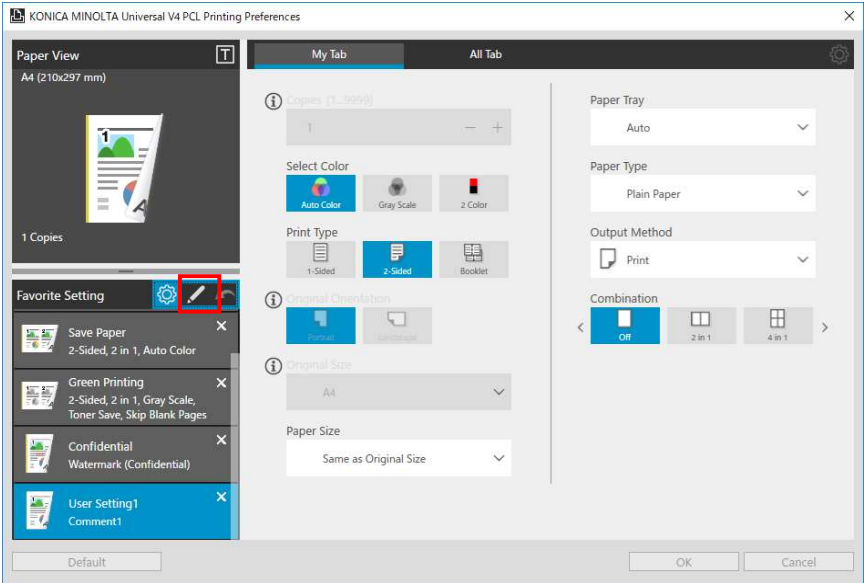


Figure 5.5-9 Favorite Setting

2. Edit Favorite Setting dialog box is displayed.

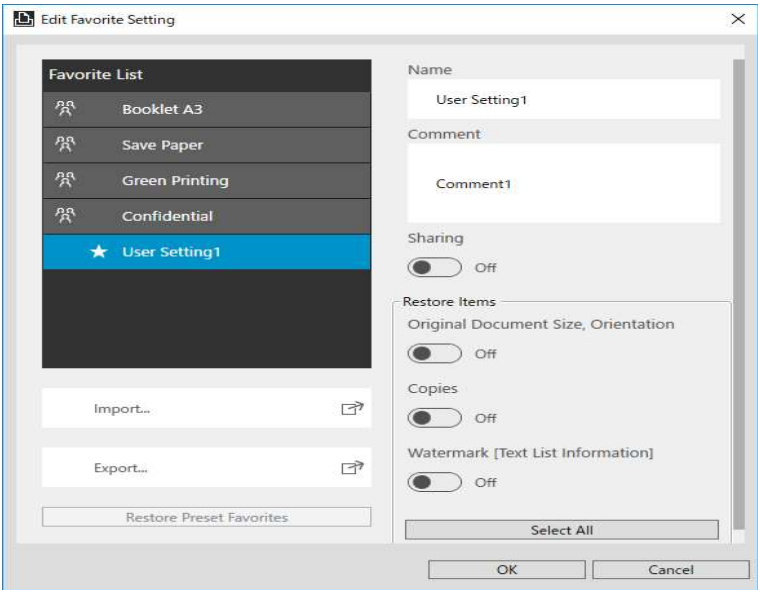


Figure 5.5-10 Edit Favorite Setting

The descriptions of the settings in Edit Favorite Setting dialog box are described below.

Parameter	Description
Favorite List	Display the saved favorite settings in list.
Import	Read the favorite settings information in a saved file and add it to the Favorite Setting List.
Export	Save the favorite setting selected in the Favorite List as a file.
Restore Preset Favorites	Restore all hidden preset favorites and display the favorite settings in list.
Name	Enter the name of the selected item in the Favorite List
Comment	Enter the comment of the selected item in the Favorite List
Sharing	Specify the sharing setting of the selected item in the Favorite List
Restore Items	Set whether the information saved by the following [Favorite] is reflected on the UI when Restore Items for [Favorite]
Original Document Size, Orientation	Set the items of [Document Size] [Orientation] in [Basic]
Copies	Set Copies of [Basic]
Watermark [Text List Information]	Set [Watermark] list of Stamp/Composition.
Restore Common Settings	Set already sharing watermark. ※The state which display when watermark List Information is on
Select All	Select the Restore items of Select All

**Figure 5.5-11 Descriptions of the Edit Favorite Setting dialog box**



## 5.6. Administrator Customization

KONICA MINOLTA Universal Print Driver supports the function that customize the print settings by administrator. Default value of print setting can be changed or fixed by using this function.

### 5.6.1. Print setting of customization target

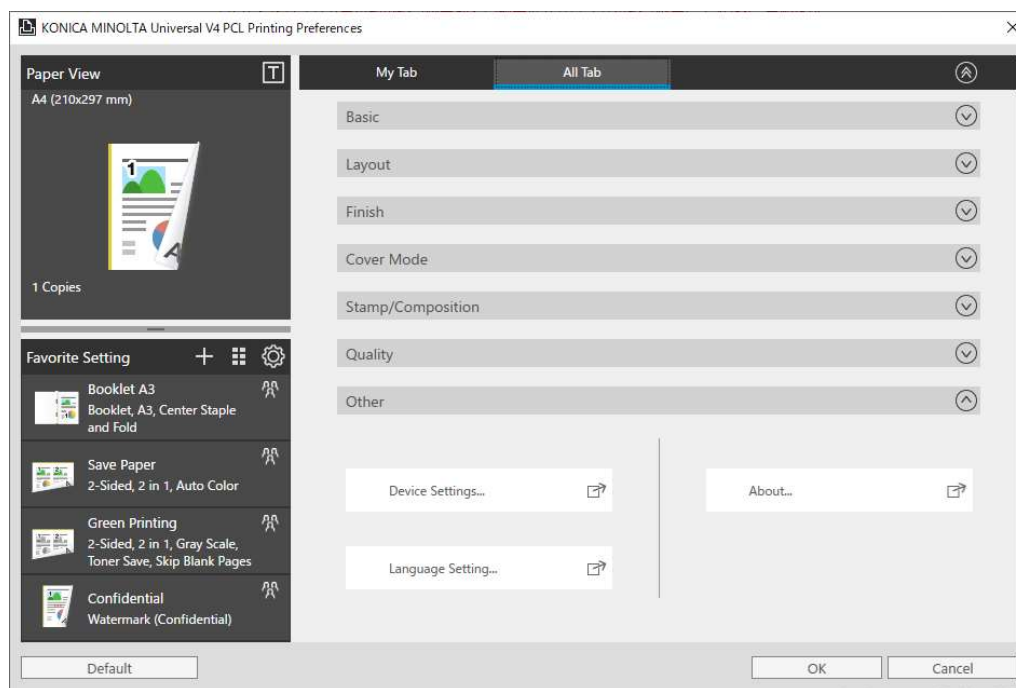
Item name		Setting value
Select Color		Auto Color
		Gray Scale
		Black + Red
		Black + Green
		Black + Blue
		Black + Cyan
		Black + Magenta
		Black + Yellow
		Black + Chinese Red
Print Type		1-Sided
		2-Sided
		Booklet
Output Method		Print
		Store Job
		Print and Hold
		Secure Print
		Save in User Box
		Save in User Box/Print
		Proof Print
		ID & Print
Secure Print	Secure Print ID	Arbitrary value in the input range
	Password	Arbitrary value in the input range
Save in User Box	File Name	Arbitrary value in the input range
	User Box Number	Arbitrary value in the input range
User Authentication	User	Public User
		Recipient User
	User Name	Use Windows Login ID
		Edit User Name

	Password	Arbitrary value in the input range
	Server Setting	Server1~ Server20
	MFP	Enhanced Server
	Authentication	External Server
Account Track	Department Name	Arbitrary value in the input range
	Password	Arbitrary value in the input range
Import...		
Export...		

### 5.6.2. Setting method

Open the Admin Configuration dialog from the Printing Preferences for the desktop applications by the following procedures.

1. Open the Printing Preferences for the desktop applications.
2. Click “All Tab” .



☒ 5.6-1 Printing Preferences for the desktop applications – All Tab

3. Click “Device Settings...” button in the “Other” group.
4. Confirmation dialog box will be displayed. Select “Yes” or “No”.

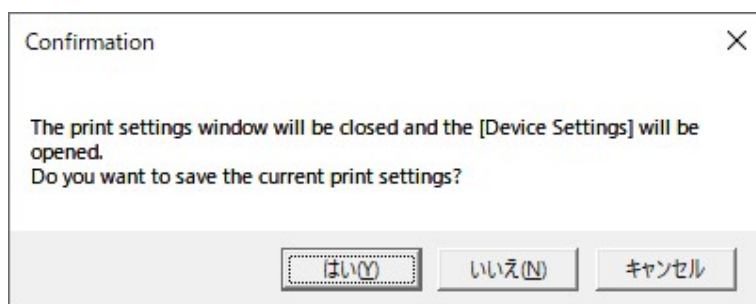


図 5.6-2 Confirmation

5. Device Settings dialog box is displayed. Click “Administrator Customize...”.

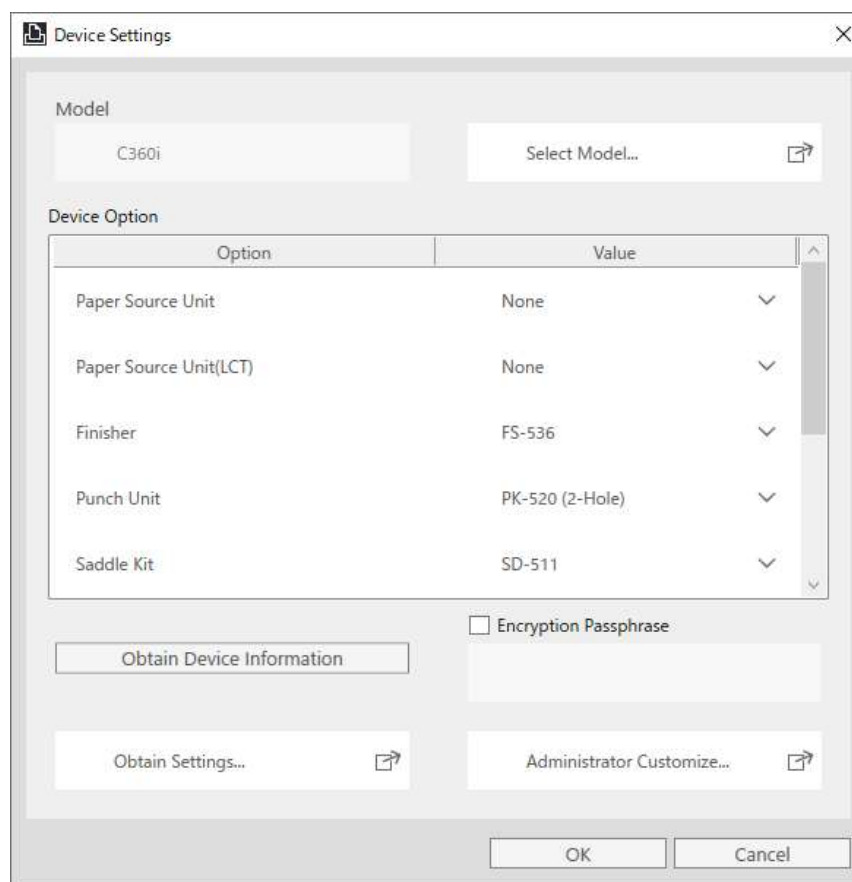
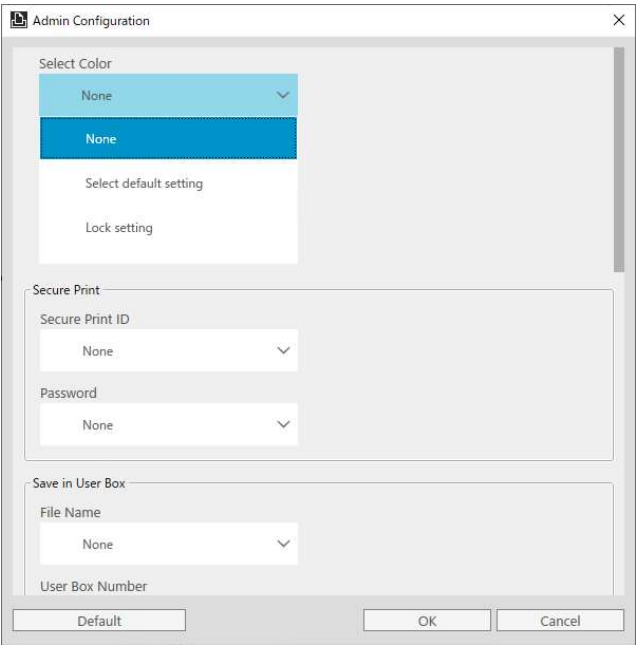


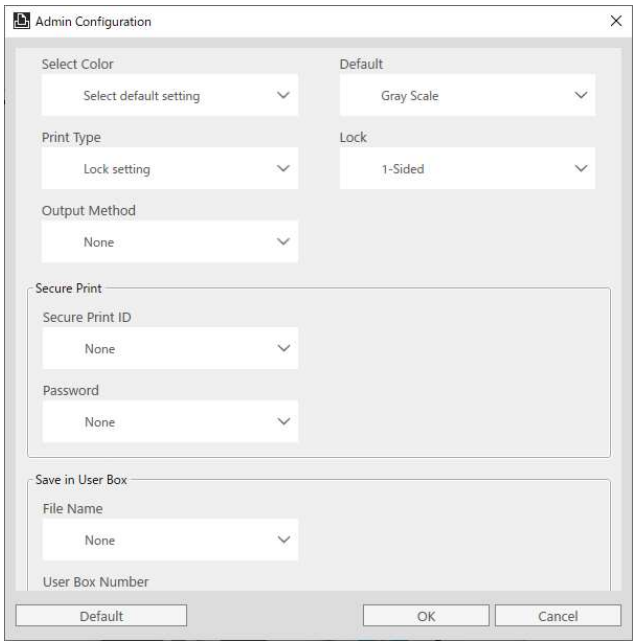
図 5.6-3 Device Settings dialog box

6. Admin Configuration dialog will be displayed. Select the method of customize print settings in the left column. Select “Select default setting” if you want to specify the default value, or select “Lock setting” if you want to fix the value.



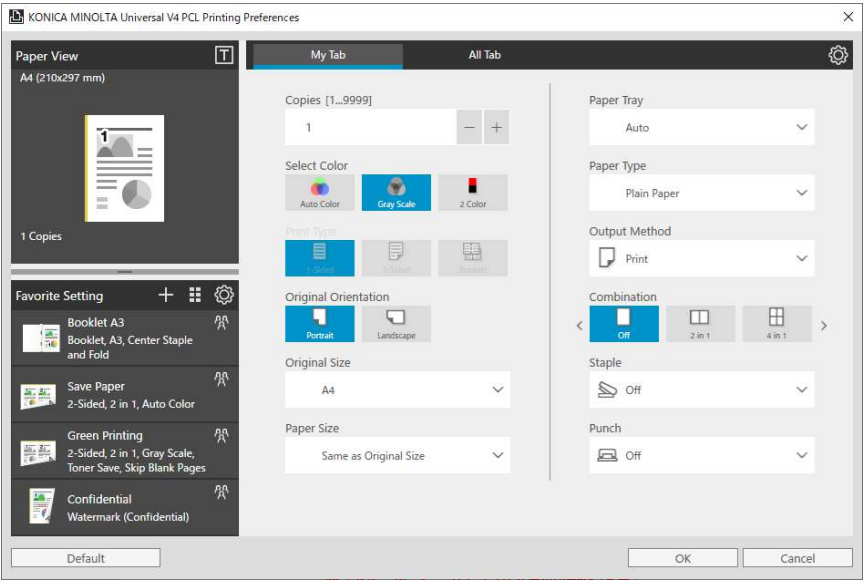
☒ 5.6-2 Admin Configuration dialog box 1

7. Next, select the value of the feature in the right column.

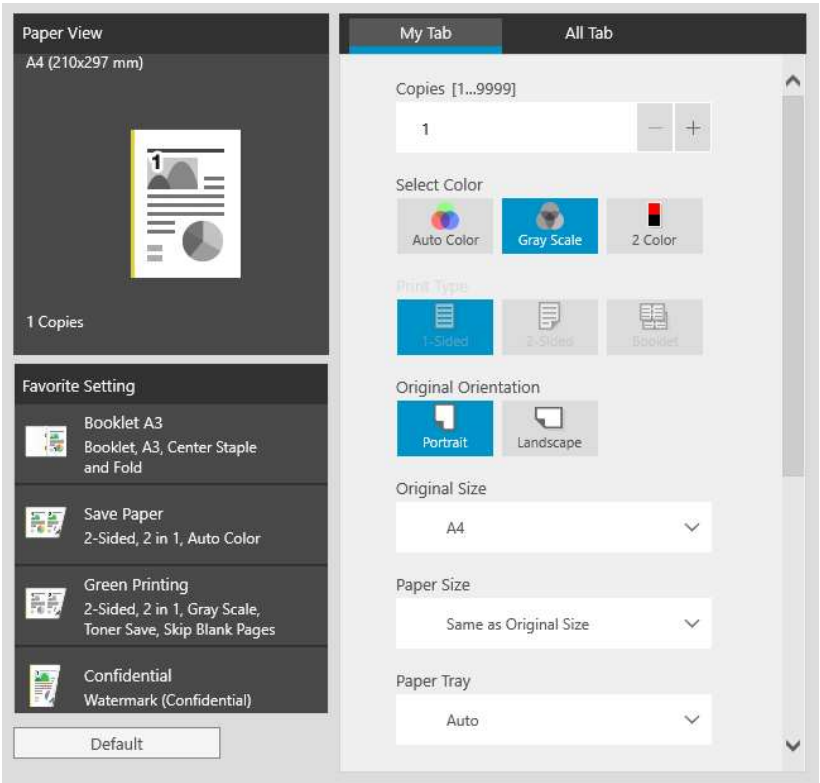


☒ 5.6-5 Admin Configuration dialog box 2

8. In the above example, Gray Scale has been selected to the default value of Select Color, and Print Type has been locked to 1-Sided. Printing Preferences are as follows.



☒ 5.6-6 Printing Preferences for the desktop applications



☒ 5.6-7 Printing Preferences for the Windows Store Apps

### 5.6.3. Export and import the setting of Administrator Customization

It is possible to export the settings of Administrator Customization to file (.KAC file) and import to another Print Queue.

#### Method of export

1. Click “Export...”.

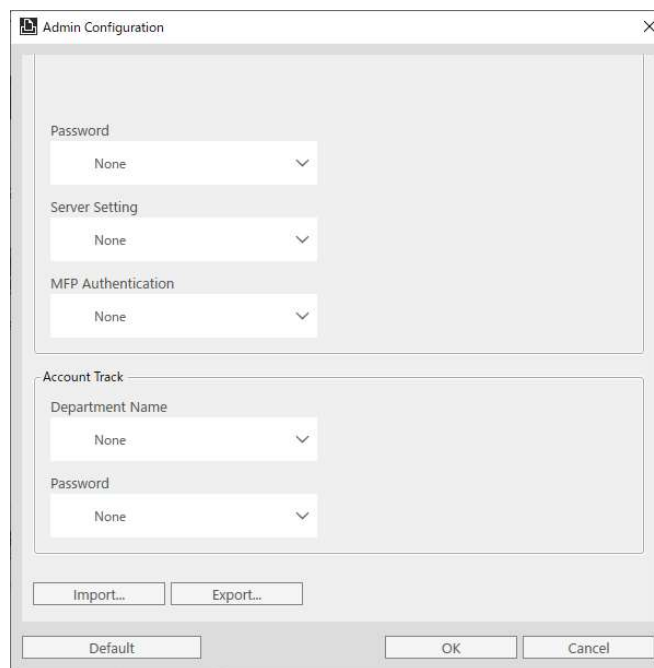


図 5.6-8 Export Selection

2. Specify location and file name, and then click “Save”.

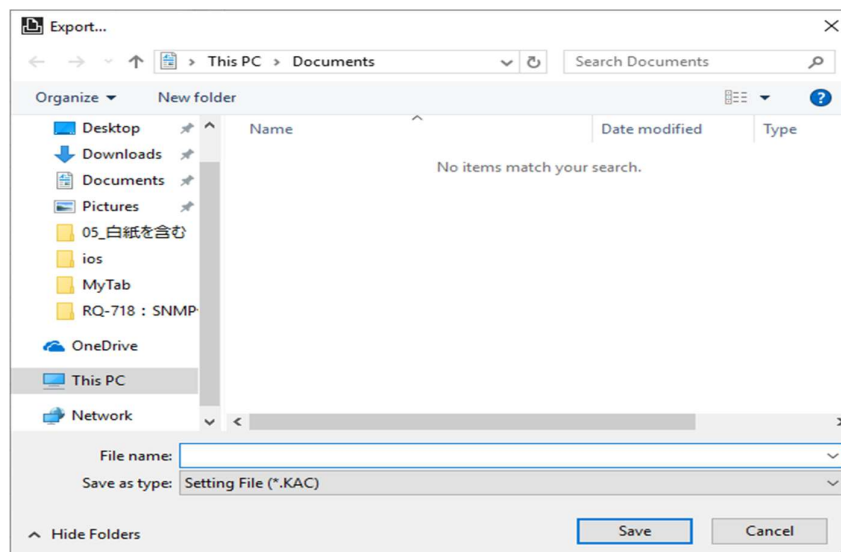


図 5.6-9 Export Destination Selection

## Method of import

1. Click “Import...”.

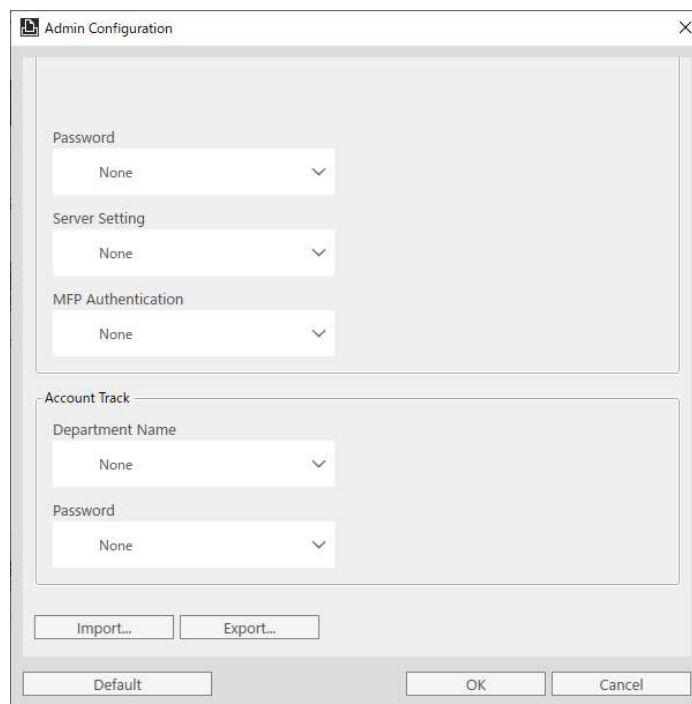


図 5.6-10 Import selection

3. Select the .KAC to import and then click “Open”.

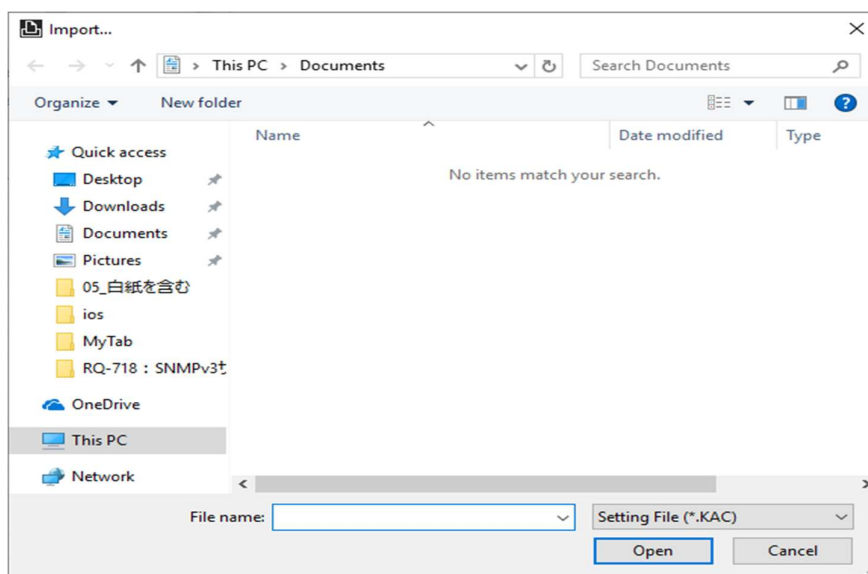


図 5.6-11 Import Destination Selection

## 6. Frequently Asked Questions

Question	Answer
Is the Citrix environment Supported?	No. KONICA MINOLTA V4 Universal Print Driver do not support Citrix environment
Can I Use My Tab function?	Yes. My Tab function is available in KONICA MINOLTA V4 Universal Print Driver.
Can I update from UPD Ver.3.x	No. KONICA MINOLTA V4 Universal Print Driver is a driver with a new architecture, which is different from UPD Ver.3.x. So KONICA MINOLTA V4 Universal Print Driver cannot be updated from UPD Ver.3.x.
Is the Windows 10 S Mode Supported?	Yes, KONICA MINOLTA V4 Universal Print Driver Ver.1.2 supports the Windows 10 S Mode. However, you cannot install (steps 3.2.1, 3.2.2) and uninstall (steps 3.3.1, 3.3.2) with the installer. Please install and uninstall the driver manually.

**Table 6-1 FAQ**



7. Appendix

7.1. List of support functions of each model

Function (1/9)	Baseline	A3 Color																
		C658/ C558/ C458	C368/ C258/ C308	C287/ C227	C266/ C226	C754(e)/ C654(e)	C554(e)/ C454(e)/ C364(e)/ C284(e)/ C224(e)	C281/ C221/ C221s	C759/ C659	C360i/ C300i/ C250i	C650i/ C550i/ C450i	C287i/ C257i/ C227i	C286i/ C266i/ C226i	C750i	C751i	C651i/ C551i	C451i/ C361i/ C301i/ C251i	Workpla ce Hub
Basic																		
Original Orientation	○	○	○	○	○	○	○	○	○	○	○	○	○	○	○	○	○	○
Original Size	○	○	○	○	○	○	○	○	○	○	○	○	○	○	○	○	○	○
Paper Size	○	○	○	○	○	○	○	○	○	○	○	○	○	○	○	○	○	○
Zoom	○	○	○	○	○	○	○	○	○	○	○	○	○	○	○	○	○	○
Paper Tray	○	○	○	○	○	○	○	○	○	○	○	○	○	○	○	○	○	○
Paper Type	○	○	○	○	○	○	○	○	○	○	○	○	○	○	○	○	○	○
Copies	○	○	○	○	○	○	○	○	○	○	○	○	○	○	○	○	○	○
Collate	○	○	○	○	○	○	○	○	○	○	○	○	○	○	○	○	○	○
Offset	○	○	○	○	○	○	○	○	×	○	○	○	○	○	○	○	○	○
Output Method	○	○	○	○	○	○	○	○	○	○	○	○	○	○	○	○	○	○
Print	○	○	○	○	○	○	○	○	○	○	○	○	○	○	○	○	○	○
Store Job	×	×	×	×	×	×	×	×	×	×	×	×	×	×	×	×	×	×
Print and Hold	×	×	×	×	×	×	×	×	×	×	×	×	×	×	×	×	×	×
Secure Print	×	○	○	○	○	○	○	○	○	○	○	○	○	○	○	○	○	○ *1
Save in User Box	×	○	○	○	○	×	○	○	×	○	○	○	○	○	○	○	○	×
Save in User Box/Print	×	○	○	○	○	×	○	○	×	○	○	○	○	○	○	○	○	×
Proof Print	○	○	○	○	○	○	○	○	○	○	○	○	○	○	○	○	○	×
ID& Print	×	○	○	○	○	×	○	○	×	○	○	○	○	○	○	○	○	○ *1
*1: WSD Protocol、×																		

Table 7-1 List of support functions of each model (1/9)

Function (2/9)		Baseline	A3 Color																
			C658/ C558/ C458	C368/ C258/ C308	C287/ C227	C266/ C226	C754(e)/ C654(e)	C554(e)/ C454(e)/ C364(e)/ C284(e)/ C224(e)	C281/ C221/ C221s	C759/ C659	C360i/ C300i/ C250i	C650i/ C550i/ C450i	C287i/ C257i/ C227i	C286i/ C266i/ C226i	C750i	C751i	C651i/ C551i	C451i/ C361i/ C301i/ C251i	Workpla ce Hub
	Authentication/Account Track	×	○	○	○	○	○	○	○	○	○	○	○	○	○	○	○	○	○
	User Authentication	×	○	○	○	○	○	○	○	○	○	○	○	○	○	○	○	○	○
	Enhanced Server	×	○	○	○	○	○	○	×	○	○	○	○	○	○	○	○	○	○
	External Server	×	○	○	○	○	○	○	×	○	○	○	○	○	○	○	○	○	×
	Device	×	○	○	○	○	○	○	○	○	○	○	○	○	○	○	○	○	×
	Account Track	×	○	○	○	○	○	○	○	○	○	○	○	○	○	○	○	○	×
Layout																			
	Combination (N in 1)	○	○	○	○	○	○	○	○	○	○	○	○	○	○	○	○	○	○
	Poster	○	○	○	○	○	○	○	○	○	○	○	○	○	○	○	○	○	○
	Rotate 180	○	○	○	○	○	○	○	○	○	○	○	○	○	○	○	○	○	○
	Skip Blank Pages	○	○	○	○	○	○	○	○	○	○	○	○	○	○	○	○	○	○
	Print Type	○	○	○	○	○	○	○	○	○	○	○	○	○	○	○	○	○	○
	1-Sided	○	○	○	○	○	○	○	○	○	○	○	○	○	○	○	○	○	○
	2-Sided	○	○	○	○	○	○	○	○	○	○	○	○	○	○	○	○	○	○
	Booklet (Device)	○	○	○	○	○	○	○	×	○	○	○	○	○	○	○	○	○	○
	Booklet (Driver)	×	×	×	×	×	×	×	○	×	×	×	×	×	×	×	×	×	×
	Binding Position	○	○	○	○	○	○	○	○	○	○	○	○	○	○	○	○	○	○
	Binding Margin	○	○	○	○	○	○	○	○	○	○	○	○	○	○	○	○	○	○
Finish																			
	Staple	○	○	○	○	×	○	○	×	○	○	○	○	×	○	○	○	○	○
	Center Staple and Fold	○	○	○	○	×	○	○	×	○	○	○	○	×	○	○	○	○	×
	Punch	○	○	○	○	×	○	○	×	○	○	○	○	×	○	○	○	○	○
	Fold	○	○	○	○	×	○	○	×	○	○	○	○	×	○	○	○	○	×
	Output Tray	○	○	○	○	×	○	○	×	○	○	○	○	×	○	○	○	○	○
	Paper Arrangement	○	○	○	○	○	○	○	×	○	○	○	○	○	○	○	○	○	○
	Prioritize Arranging Papers	○	○	○	○	○	○	○	×	○	○	○	○	○	○	○	○	○	○
	Prioritize Productivity	○	○	○	○	○	○	○	×	○	○	○	○	○	○	○	○	○	○

Table 7-2 List of support functions of each model (2/9)

Function (3/9)		Baseline	A3 Color																
			C658/ C558/ C458	C368/ C258/ C308	C287/ C227	C266/ C226	C754(e)/ C654(e)	C554(e)/ C454(e)/ C364(e)/ C284(e)/ C224(e)	C281/ C221/ C221s	C759/ C659	C360i/ C300i/ C250i	C650i/ C550i/ C450i	C287i/ C257i/ C227i	C286i/ C266i/ C226i	C750i	C751i	C651i/ C551i/	C451i/ C361i/ C301i/ C251i	Workplace Hub
Cover Mode																			
Front Cover		○	○	○	○	○	○	○	○	○	○	○	○	○	○	○	○	○	○
Back Cover		○	○	○	○	○	○	○	○	○	○	○	○	○	○	○	○	○	○
Front Cover from Post Inserter		○	○	×	×	×	○	○	×	○	×	○	×	×	○	○	○	○ *2	×
Back Cover from Post Inserter		○	○	×	×	×	○	○	×	○	×	○	×	×	○	○	○	○ *2	×
Transparency Interleave		○	○	○	○	○	○	○	×	○	○	○	○	○	○	○	○	○	○
Stamp/Composition																			
Watermark		○	○	○	○	○	○	○	○	○	○	○	○	○	○	○	○	○	○
Quality																			
Select Color		○	○	○	○	○	○	○	○	○	○	○	○	○	○	○	○	○	○
	Auto Color	○	○	○	○	○	○	○	○	○	○	○	○	○	○	○	○	○	○
	Gray Scale	○	○	○	○	○	○	○	○	○	○	○	○	○	○	○	○	○	○
	2 Color	○	○	○	○	○	○	○	○	○	○	○	○	○	○	○	○	○	○
Resolution		○	○	○	○	○	○	○	○	○	○	○	○	○	○	○	○	○	○
Toner Save		○	○	○	○	○	○	○	○	○	○	○	○	○	○	○	○	○	○
Other																			
Quiet Mode		×	×	×	×	×	×	×	×	×	×	×	×	×	×	×	×	×	×
Improve Print Output		×	×	×	×	×	×	×	×	×	×	×	×	×	×	×	×	×	×
Device Settings		○	○	○	○	○	○	○	○	○	○	○	○	○	○	○	○	○	○
Language Setting		○	○	○	○	○	○	○	○	○	○	○	○	○	○	○	○	○	○
About		○	○	○	○	○	○	○	○	○	○	○	○	○	○	○	○	○	○
*2: C361i/C301i/C251i、×																			

Table 7-1 List of support functions of each model (3/9)

Function (4/9)	A3 BW														
	958/ 808/ 758	558/ 458	367/ 287/ 227	754(e)/ 654(e)	554e/ 454e/ 364e/ 284e/ 224e	368/ 308	658e/ 558e/ 458e/ 368e/ 308e	306i 266i 246i 226i	750i	650i/ 550i/ 450i/ 360i/ 300i	751i	651i/ 551i	451i/ 361i/ 301i	950i/ 850i	
Basic															
Original Orientation	○	○	○	○	○	○	○	○	○	○	○	○	○	○	
Original Size	○	○	○	○	○	○	○	○	○	○	○	○	○	○	
Paper Size	○	○	○	○	○	○	○	○	○	○	○	○	○	○	
Zoom	○	○	○	○	○	○	○	○	○	○	○	○	○	○	
Paper Tray	○	○	○	○	○	○	○	○	○	○	○	○	○	○	
Paper Type	○	○	○	○	○	○	○	○	○	○	○	○	○	○	
Copies	○	○	○	○	○	○	○	○	○	○	○	○	○	○	
Collate	○	○	○	○	○	○	○	○	○	○	○	○	○	○	
Offset	○	○	○	○	○	○	○	○	○	○	○	○	○	○	
Output Method	○	○	○	○	○	○	○	○	○	○	○	○	○	○	
Print	○	○	○	○	○	○	○	○	○	○	○	○	○	○	
Store Job	×	×	×	×	×	×	×	×	×	×	×	×	×	×	
Print and Hold	×	×	×	×	×	×	×	×	×	×	×	×	×	×	
Secure Print	○	○	○	○	○	○	○	○	○	○	○	○	○	○	
Save in User Box	○	○	○	○	○	○	○	○	○	○	○	○	○	○	
Save in User Box/Print	○	○	○	○	○	○	○	○	○	○	○	○	○	○	
Proof Print	○	○	○	○	○	○	○	○	○	○	○	○	○	○	
ID& Print	○	○	○	○	○	○	○	○	○	○	○	○	○	○	

Table 7-4 List of support functions of each model (4/9)

Function (5/9)		A3 BW													
		958/ 808/ 758	558/ 458	367/ 287/ 227	754(e)/ 654(e)	554e/ 454e/ 364e/ 284e/ 224e	368/ 308	658e/ 558e/ 458e/ 368e/ 308e	306i 266i 246i 226i	750i	650i/ 550i/ 450i/ 360i/ 300i	751i	651i/ 551i	451i/ 361i/ 301i	950i/ 850i
	Authentication/Account Track	○	○	○	○	○	○	○	○	○	○	○	○	○	○
	User Authentication	○	○	○	○	○	○	○	○	○	○	○	○	○	○
	Enhanced Server	○	○	○	○	○	○	○	○	○	○	○	○	○	○
	External Server	○	○	○	○	○	○	○	○	○	○	○	○	○	○
	Device	○	○	○	○	○	○	○	○	○	○	○	○	○	○
	Account Track	○	○	○	○	○	○	○	○	○	○	○	○	○	○
Layout															
	Combination (N in 1)	○	○	○	○	○	○	○	○	○	○	○	○	○	○
	Poster	○	○	○	○	○	○	○	○	○	○	○	○	○	○
	Rotate 180	○	○	○	○	○	○	○	○	○	○	○	○	○	○
	Skip Blank Pages	○	○	○	○	○	○	○	○	○	○	○	○	○	○
	Print Type	○	○	○	○	○	○	○	○	○	○	○	○	○	○
	1-Sided	○	○	○	○	○	○	○	○	○	○	○	○	○	○
	2-Sided	○	○	○	○	○	○	○	○	○	○	○	○	○	○
	Booklet (Device)	○	○	○	○	○	○	○	○	○	○	○	○	○	○
	Booklet (Driver)	×	×	×	×	×	×	×	×	×	×	×	×	×	×
	Binding Position	○	○	○	○	○	○	○	○	○	○	○	○	○	○
	Binding Margin	○	○	○	○	○	○	○	○	○	○	○	○	○	○
Finish															
	Staple	○	○	○	○	○	○	○	×	○	○	○	○	○	○
	Center Staple and Fold	○	○	○	○	○	○	○	×	○	○	○	○	○	○
	Punch	○	○	○	○	○	○	○	×	○	○	○	○	○	○
	Fold	○	○	○	○	○	○	○	×	○	○	○	○	○	○
	Output Tray	○	○	○	○	○	○	○	×	○	○	○	○	○	○
	Paper Arrangement	○	○	○	○	○	○	○	○	○	○	○	○	○	○
	Prioritize Arranging Papers	○	○	○	○	○	○	○	○	○	○	○	○	○	○
	Prioritize Productivity	○	○	○	○	○	○	○	○	○	○	○	○	○	○

Table 7-5 List of support functions of each model (5/9)

Function (6/9)		A3 BW													
		958/ 808/ 758	558/ 458	367/ 287/ 227	754(e)/ 654(e)	554e/ 454e/ 364e/ 284e/ 224e	368/ 308	658e/ 558e/ 458e/ 368e/ 308e	306i 266i 246i 226i	750i	650i/ 550i/ 450i/ 360i/ 300i	751i	651i/ 551i	451i/ 361i/ 301i	950i/ 850i
Cover Mode															
Front Cover		○	○	○	○	○	○	○	○	○	○	○	○	○	○
Back Cover		○	○	○	○	○	○	○	○	○	○	○	○	○	○
Front Cover from Post Inserter		○	○	×	○	○	×	○	×	○	○ *3	○	○	○ *3	○
Back Cover from Post Inserter		○	○	×	○	○	×	○	×	○	○ *3	○	○	○ *3	○
Transparency Interleave		○	○	○	○	○	○	○	○	○	○	○	○	○	○
Stamp/Composition															
Watermark		○	○	○	○	○	○	○	○	○	○	○	○	○	○
Quality															
Select Color		×	×	×	×	×	×	×	×	×	×	×	×	×	×
	Auto Color	×	×	×	×	×	×	×	×	×	×	×	×	×	×
	Gray Scale	×	×	×	×	×	×	×	×	×	×	×	×	×	×
	2 Color	×	×	×	×	×	×	×	×	×	×	×	×	×	×
Resolution		○	○	○	○	○	○	○	○	○	○	○	○	○	○
Toner Save		○	○	○	○	○	○	○	○	○	○	○	○	○	○
Other															
Quiet Mode		×	×	×	×	×	×	×	×	×	×	×	×	×	×
Improve Print Output		×	×	×	×	×	×	×	×	×	×	×	×	×	×
Device Settings		○	○	○	○	○	○	○	○	○	○	○	○	○	○
Language Setting		○	○	○	○	○	○	○	○	○	○	○	○	○	○
About		○	○	○	○	○	○	○	○	○	○	○	○	○	○
*3: 360i/300i/361i/301i、×															

Table 7-6 List of support functions of each model (6/9)

Function (7/9)	A4 Color								A4 BW										
	C3851/ C3351/ C3851 FS	C3350/ C3850/ C3850 FS	C3100 P	C3110	C4050i / C3350i	C4000i / C3300i / C3320i	C4051i / C3351i	C4001i / C3301i / C3321i	4750/ 4050	4700P/ 4000P/ 3300P/ 3301P	4020/ 3320	4752/ 4052	4702P/ 4402P/ 3602P	4422/ 3622	5020i/ 5000i/ 4020i/ 4000i	4750i/ 4050i	4700i	4751i/ 4051i	4701i
Basic																			
Original Orientation	○	○	○	○	○	○	○	○	○	○	○	○	○	○	○	○	○	○	○
Original Size	○	○	○	○	○	○	○	○	○	○	○	○	○	○	○	○	○	○	○
Paper Size	○	○	○	○	○	○	○	○	○	○	○	○	○	○	○	○	○	○	○
Zoom	○	○	○	○	○	○	○	○	○	○	○	○	○	○	○	○	○	○	○
Paper Tray	○	○	○	○	○	○	○	○	○	○	○	○	○	○	○	○	○	○	○
Paper Type	○	○	○	○	○	○	○	○	○	○	○	○	○	○	○	○	○	○	○
Copies	○	○	○	○	○	○	○	○	○	○	○	○	○	○	○	○	○	○	○
Collate	○	○	○	○	○	○	○	○	○	○	○	○	○	○	○	○	○	○	○
Offset	○	○	×	×	×	×	×	×	×	×	×	×	×	×	×	×	×	×	×
Output Method	○	○	○	○	○	○	○	○	○	○	○	○	○	○	○	○	○	○	○
Print	○	○	○	○	○	○	○	○	○	○	○	○	○	○	○	○	○	○	○
Store Job	×	○	○	○	×	○	×	○	○	○ *4	○	×	○ *5	○	×	×	×	×	×
Print and Hold	×	○	○	○	×	○	×	○	○	○ *4	○	×	○ *5	○	×	×	×	×	×
Secure Print	○	○	○	○	○	×	○	×	○	○ *4	○	○	○ *5	○	○	○	×	○	×
Save in User Box	○	×	×	×	○	×	○	×	×	×	×	○	×	×	×	○	×	○	×
Save in User Box/Print	○	×	×	×	○	×	○	×	×	×	×	○	×	×	×	○	×	○	×
Proof Print	○	○	○	○	○	○	○	○	○	○ *4	○	○	○ *5	○	×	○	○	○	○
ID& Print	○	○	○	○	○	×	○	×	○	×	×	○	×	×	×	○	×	○	×
*4: Model =3300P,3301P、×   *5: Model =3602P、×																			

Table 7-7 List of support functions of each model (7/9)

Function (8/9)		A4 Color								A4 BW											
		C3851/ C3351/ C3851 FS	C3350/ C3850/ C3850 FS	C3100 P	C3110	C4050 i/ C3350 i	C4000 i/ C3300 i/ C3320 i	C4051 i/ C3351 i	C4001 i/ C3301 i/ C3321 i	4750/ 4050	4700P/ 4000P/ 3300P/ 3301P	4020/ 3320	4752/ 4052	4702P/ 4402P/ 3602P	4422/ 3622	5020i/ 5000i/ 4020i/ 4000i	4750i/ 4050i	4700i	4751i/ 4051i	4701i	
	Authentication/Account Track	○	○	○	○	○	○	○	○	○	×	×	○	×	×	×	○	○	○	○	
	User Authentication	○	○	○	○	○	○	○	○	○	×	×	○	×	×	×	○	○	○	○	
		Enhanced Server	○	○	○	○	○	○	○	○	○	×	×	○	×	×	×	○	○	○	○
		External Server	○	○	×	×	○	○	○	○	○	×	×	○	×	×	×	○	○	○	○
		Device	○	○	○	○	○	○	○	○	○	×	×	○	×	×	×	○	○	○	○
	Account Track	○	○	○	○	○	○	○	○	○	×	×	○	×	×	×	○	○	○	○	
Layout																					
Combination (N in 1)		○	○	○	○	○	○	○	○	○	○	○	○	○	○	○	○	○	○	○	
Poster		○	○	○	○	○	○	○	○	○	○	○	○	○	○	○	○	○	○	○	
Rotate 180		○	○	○	○	○	○	○	○	○	○	○	○	○	○	○	○	○	○	○	
Skip Blank Pages		○	○	○	○	○	○	○	○	○	○	○	○	○	○	○	○	○	○	○	
Print Type		○	○	○	○	○	○	○	○	○	○	○	○	○	○	○	○	○	○	○	
1-Sided		○	○	○	○	○	○	○	○	○	○	○	○	○	○	○	○	○	○	○	
2-Sided		○	○	○	○	○	○	○	○	○	○	○	○	○	○	○	○	○	○	○	
Booklet (Device)		○	×	×	×	○	○	○	○	×	×	×	○	×	×	×	○	○	○	○	
Booklet (Driver)		×	○	○	○	×	×	×	×	○	○	○	×	○	○	○	×	×	×	×	
Binding Position		○	○	○	○	○	○	○	○	○	○	○	○	○	○	○	○	○	○	○	
Binding Margin		○	○	○	○	○	○	○	○	○	○	○	○	○	○	○	○	○	○	○	
Finish																					
Staple		○	○	×	×	×	×	×	×	○	×	×	○	×	×	×	×	×	×	×	
Center Staple and Fold		×	×	×	×	×	×	×	×	×	×	×	×	×	×	×	×	×	×	×	
Punch		×	×	×	×	×	×	×	×	×	×	×	×	×	×	×	×	×	×	×	
Fold		×	×	×	×	×	×	×	×	×	×	×	×	×	×	×	×	×	×	×	
Output Tray		×	×	×	×	×	×	×	×	×	×	×	×	×	×	×	×	×	×	×	
Paper Arrangement		○	×	×	×	○	○	○	○	×	×	×	○	×	×	×	○	○	○	○	
Prioritize Arranging Papers		○	×	×	×	○	○	○	○	×	×	×	○	×	×	×	○	○	○	○	
Prioritize Productivity		○	×	×	×	○	○	○	○	×	×	×	○	×	×	×	○	○	○	○	

Table 7-8 List of support functions of each model (8/9)



Function (9/9)	A4 Color								A4 BW										
	C3851/ C3351/ C3851 FS	C3350/ C3850/ C3850 FS	C3100 P	C3110	C4050i / C3350i	C4000i / C3300i / C3320i	C4051i / C3351i	C4001i / C3301i / C3321i	4750/ 4050	4700P/ 4000P/ 3300P/ 3301P	4020/ 3320	4752/ 4052	4702P/ 4402P/ 3602P	4422/ 3622	5020i/ 5000i/ 4020i/ 4000i	4750i/ 4050i	4700i	4751i/ 4051i	4701i
Cover Mode																			
Front Cover	○	×	×	×	○	○	○	○	×	×	×	○	×	×	×	○	○	○	○
Back Cover	○	×	×	×	○	○	○	○	×	×	×	○	×	×	×	○	○	○	○
Front Cover from Post Inserter	×	×	×	×	×	×	×	×	×	×	×	×	×	×	×	×	×	×	×
Back Cover from Post Inserter	×	×	×	×	×	×	×	×	×	×	×	×	×	×	×	×	×	×	×
Transparency Interleave	×	×	×	×	×	×	×	×	×	×	×	×	×	×	×	×	×	×	×
Stamp/Composition																			
Watermark	○	○	○	○	○	○	○	○	○	○	○	○	○	○	○	○	○	○	○
Quality																			
Select Color	○	○	○	○	○	○	○	○	×	×	×	×	×	×	×	×	×	×	×
Auto Color	○	○	○	○	○	○	○	○	×	×	×	×	×	×	×	×	×	×	×
Gray Scale	○	○	○	○	○	○	○	○	×	×	×	×	×	×	×	×	×	×	×
2 Color	○	×	×	×	○	○	○	○	×	×	×	×	×	×	×	×	×	×	×
Resolution	○	○	○	○	○	○	○	○	○	○	○	○	○	○	○	○	○	○	○
Toner Save	○	○	○	○	○	○	○	○	○	○	○	○	○	○	○	○	○	○	○
Other																			
Quiet Mode	×	×	×	×	×	×	×	×	×	×	×	×	×	×	○	×	×	×	×
Improve Print Output	×	×	×	×	×	×	×	×	×	×	×	×	×	×	○	×	×	×	×
Device Settings	○	○	○	○	○	○	○	○	○	○	○	○	○	○	○	○	○	○	○
Language Setting	○	○	○	○	○	○	○	○	○	○	○	○	○	○	○	○	○	○	○
About	○	○	○	○	○	○	○	○	○	○	○	○	○	○	○	○	○	○	○

Table 7-9 List of support functions of each model (9/9)