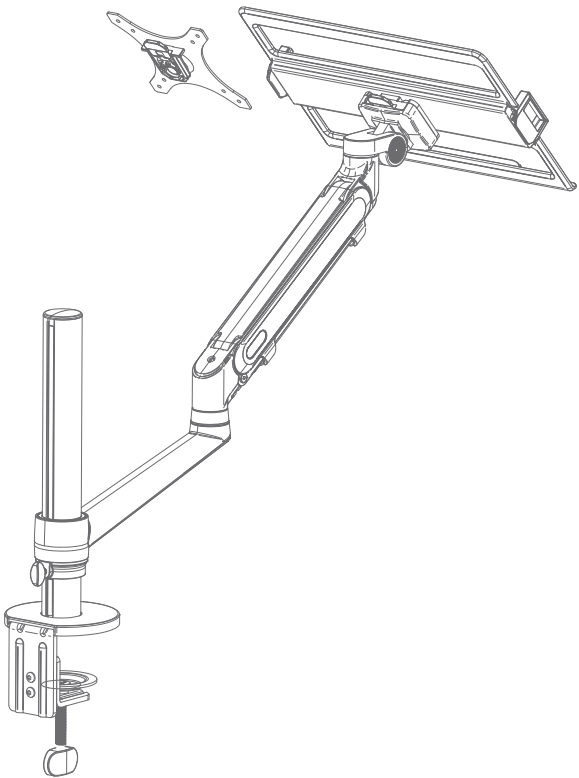


ARM ADJUSTMENTS

INSTALLATION HARDWARE

WARRANTY SERVICE



1S Pro
Installation
Instructions



Scan QR code
to get install video



Scan QR code below for
more products from viozon

TENSION ADJUSTMENT

If you feel the pitching angle too tight or too loose when adjusting the mount, please adjust the Screw.

5MM

5MM

6MM

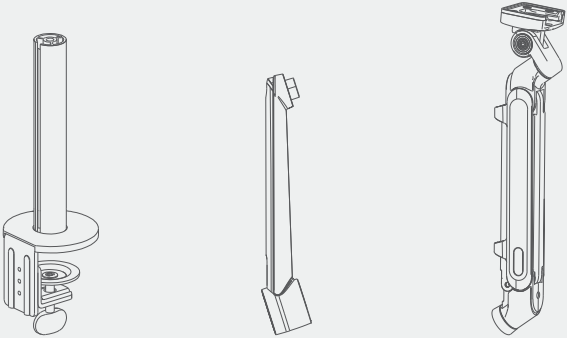
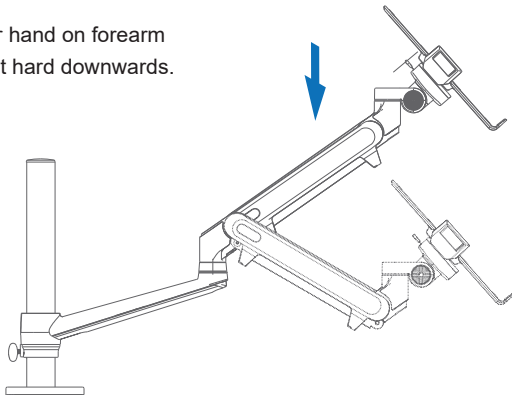
WEIGHT ADJUSTMENT

The load weight of mount is 3.3 to 19.8lb, factory default settings: 6.6 to 8.8lb, it will decrease gradually when adjusting the Screw(C) by clockwise rotation, vice versa.

Note: Once you feel the damping of screw increases or cannot be rotated, please stop it, avoid of damaging the mount.

ADJUST SPRING ARM AT
VERTICAL DIRECTION

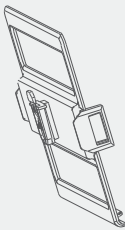
Place your hand on forearm and push it hard downwards.



X 1
Base Stem

X 1
Rear Arm

X 1
Forearm



X 1
Laptop Plate



X 1
VESA Connector



X 1
Clip



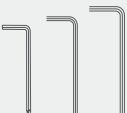
X 1
Post Cap



X 6
Screws(M4)



X 6
Screws(M5)



4 / 5 / 6mm
Hex Wrench

FEEDBACK

Share it?
Let us know with a customer review.

Viozon is focusing on high-standard products, we believe that customers' feedback drives us upgrading products. Writing a review which sharing your experience will help other customers. Also, your review will give us great encouragement and confidence for future improvement. If you have any questions, please feel free to contact us without hesitation.

FOR HELP PLEASE CONTACT US:



Facebook: Viozon



service@vio-zon.com



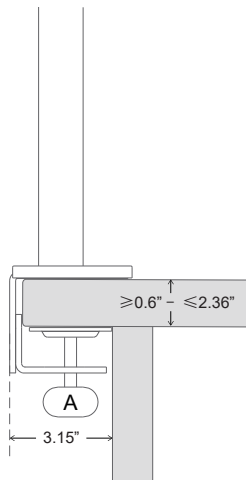
www.vio-zon.com

STEP1. ATTACH MOUNT TO WORK SURFACE

CLAMP/GROMMET MOUNT

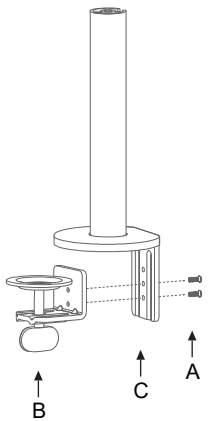
- a Install on open edge of work surface:

Slide the Base Stem against work surface edge and fully tighten clamp Screw(A).

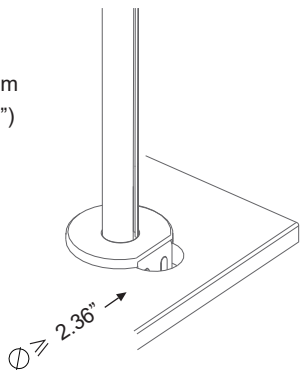


- b For installation through a grommet hole:

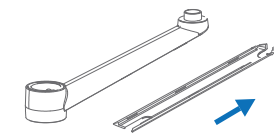
Before inserting the Base Stem, please detach the Bottom Clamp(B) from the Top Bracket(C) by loosening Bracket Screws(A) with Hex Wrench.



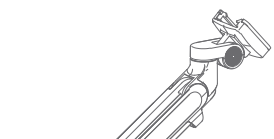
Then inserting the Base Stem through grommet (dia. ≥ 2.36 ") and against work surface edge. Fully tighten Clamp Screw.



STEP2. ATTACH ARM TO THE POLE



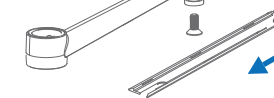
- 1 Remove the plastic cover from rear arm.



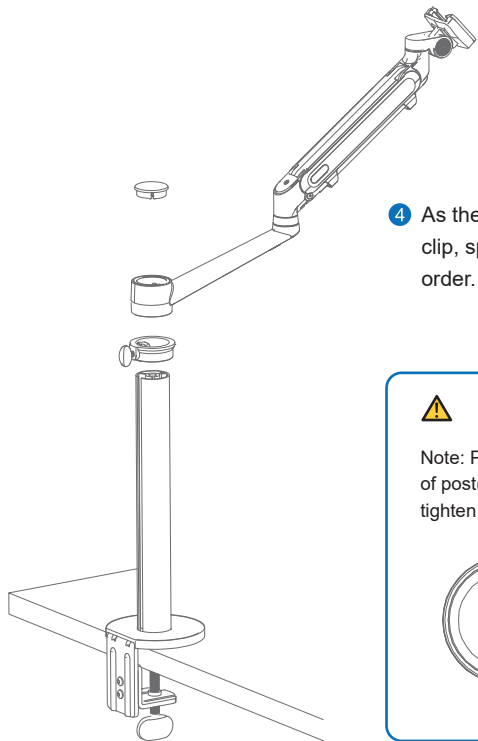
- 2 Remove the screw from the Forearm by the hex wrench.



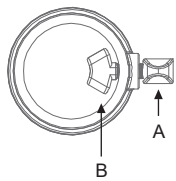
- 3 As the picture shows, install screw in order, then put plastic cover back.



- 4 As the picture shows, install clip, spring arm, post cap in order.

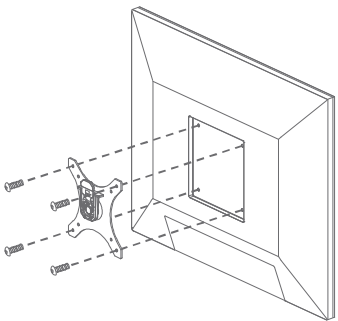


Note: Please fix the inside nut of post(B) in position before tighten Screw(A) on the clip.



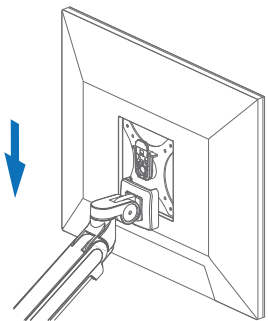
STEP3. ATTACH MONITOR/LAPTOP PLATE TO ARM

INSTALLING MONITOR

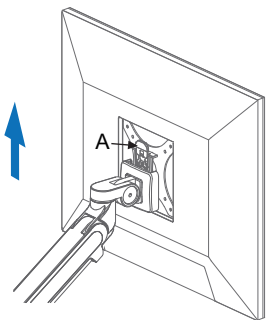


- 1 As the picture shows, install VESA mount on monitor. Be careful to leave the slide clip upwards.

VESA standard:
75*75mm ; 100*100mm

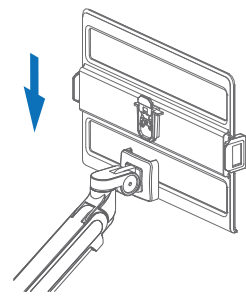


- 2 Insert the VESA connector into the groove, when heard a click sound means done.



Note: If you want to remove the device, please press shrapnel (A) to remove the device Up to extract.

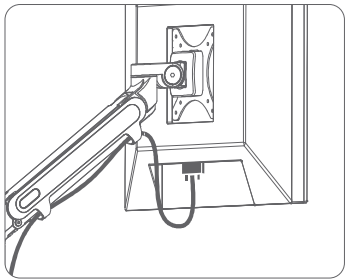
INSTALLING LAPTOP PLATE



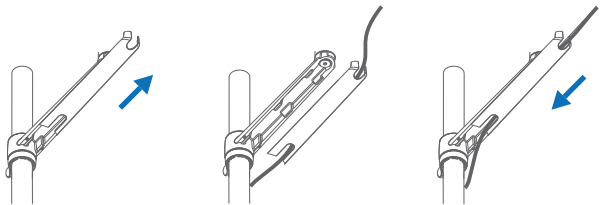
Insert the Laptop Plate into the groove, when heard a click sound means done.

STEP4. CABLE MANAGEMENT

- 1 Route power and monitor cables through the cable clips on the upper links.



- 2 Slide the plastic cover on the rear arm upwards until it disengages. Put cables onto the plastic cover inside. Slide the cover downwards until it click into place.



WARNING

- * Make sure to read the manual before installation and fully understand how to install, if you have any questions, please visit our website or contact our service email for the help.
- * Please make sure the desktop could bear the weight of mount and monitor before installation.
- * This product contains small parts, keep these away from children.