



Add: Xinhui Dist.,Jiangmen City, Guangdong Province, China

Tel: +86-0750-6369606 **Fax:** +86-0750-6369707

Email: info@linkhardware.com **Webside:** www.linkhardware.com

SHOWER DOOR HARDWARE
ARCHTECTURAL HARDWARE
RAILING HARDWARE
SHOWER ROOM

LINK FOR NEXT

Founded in 2008, Link Hardware has swiftly established itself as a premier manufacturer of high-quality glass hardware.

We take pride in being the first choice for industry specialists exporting to the USA, Canada, the Middle East, and Australia.

Our comprehensive services include OEM (Original Equipment Manufacturer) and ODM (Original Design Manufacturer), allowing us to cater to a diverse range of client needs with precision and innovation.

At Link Hardware, we are dedicated to delivering benchmark product solutions that set the industry standard.

Our commitment to excellence is reflected in our meticulous attention to detail and our unwavering focus on exceeding customer expectations with every order.

Whether you are seeking reliable hardware for your next project or need customized solutions tailored to your specifications, Link Hardware is your trusted partner in achieving outstanding results.

Join us and experience the superior quality and exceptional service that define Link Hardware.

FACTORY INTRODUCTION



PROFESSIONAL / **E**FFICIENT /
INNOVATIVE / **C**OMPETITIVE



PRODUCTION PROCESS



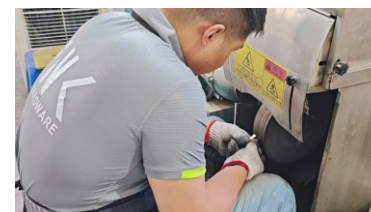
HEAT FORGING >



METAL SHAPING >



CNC PRECISION MACHINING >



POLISH >



PLATING >



ASSEMBLY



SHOWER HINGE



SH201H / SH201HV
(Standard / Heavy Duty)

SH201 / SH201V
(Standard / Heavy Duty)

SH201S / SH201SV
(Standard / Heavy Duty)

SH201HAD
(Adjustable)



SH203 / SH203V
(Standard / Heavy Duty)



SH203AD
(Adjustable)



SH202 / SH202V
(Standard / Heavy Duty)



SH202AD
(Adjustable)



SH204B / SH204BV
(Standard / Heavy Duty)



SH204 / SH204V
(Standard / Heavy Duty)



SH207 / SH207V
(Standard / Heavy Duty)



SH606 / SH606V
(Standard / Heavy Duty)

STRAIGHT EDGE SHOWER HINGE

The Straight Edge Series of professional hinges accommodates 1/2", 3/8", or 5/16" (12, 10, or 8 mm) glass. A variety of styles and contain a reversible 5° Pivot Pin (select styles). In addition, Custom Pivot Pins are available to accommodate "off-angle" installations. The hinges are made of solid brass with all moving parts (pins and springs) in to press in snugly against a jamb.



BEVELED EDGE SHOWER HINGE

The Beveled Edge Series has radius corners and beveled edges for a sleek appearance. Beveled Edge Hinges accommodate 1/2", 3/8", or 5/16" (12, 10, or 8 mm) thick tempered safety glass, and are self-centering when within 15° of the closed position. Beveled Edge hinges are constructed of solid brass, and have stainless steel plunger tips, pins, and springs to ensure a long service life and reliable door closure.



SH301 / SH301V
(Standard / Heavy Duty)



SH301H / SH301HV
(Standard / Heavy Duty)



SH305 / SH305V
(Standard / Heavy Duty)



SH301S / SH301SV
(Standard / Heavy Duty)



SH303 / SH303V
(Standard / Heavy Duty)



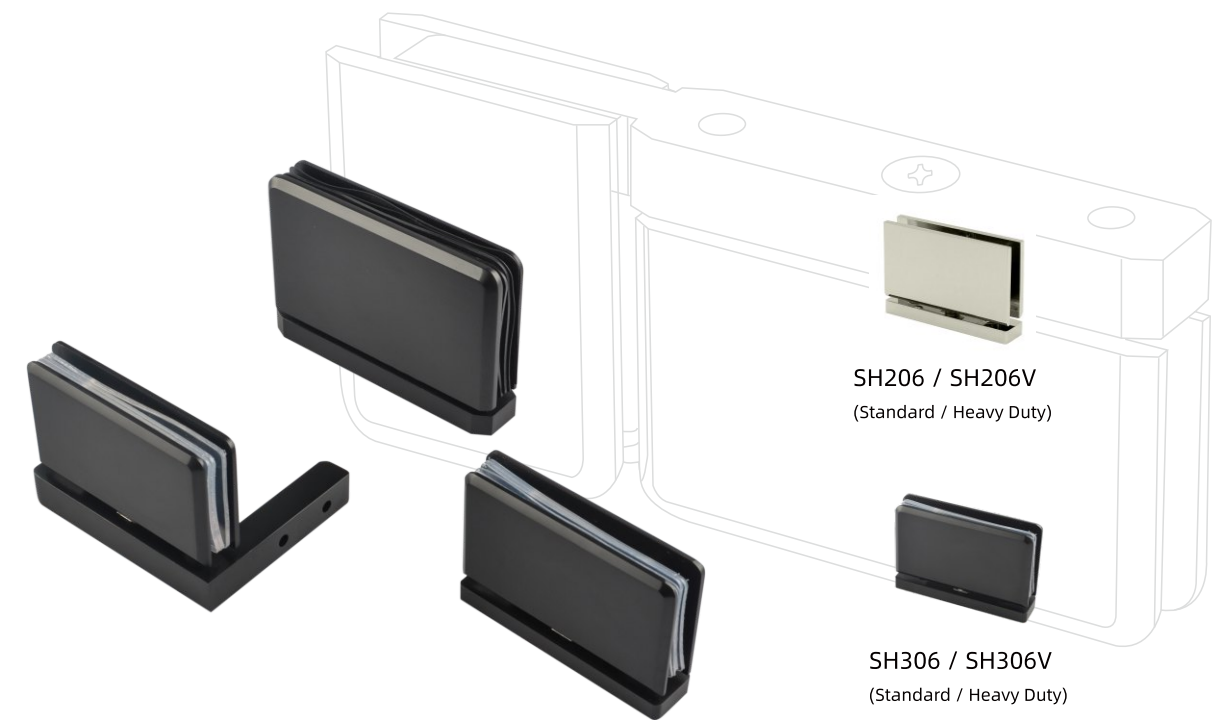
SH302 / SH302V
(Standard / Heavy Duty)



SH304L / SH304LV
(Standard / Heavy Duty)



SH304 / SH304V
(Standard / Heavy Duty)



SH206 / SH206V
(Standard / Heavy Duty)

SH306 / SH306V
(Standard / Heavy Duty)

PIVOT HINGE SHOWER HINGE

Pivot Hinges are designed for use with 3/8" or 5/16" (10 or 8 mm) tempered safety glass, and provide a wide array of application possibilities. Advantages of pivot type hinges include the fact that they carry the majority of the door weight on the bottom and have the ability to be inset from the wall, enabling clearance for towel bars and other projections.



SPH180C



BPH180C



SH206D / SH206DV
(Standard / Heavy Duty)



SH306D / SH306DV
(Standard / Heavy Duty)



SH206-L / R



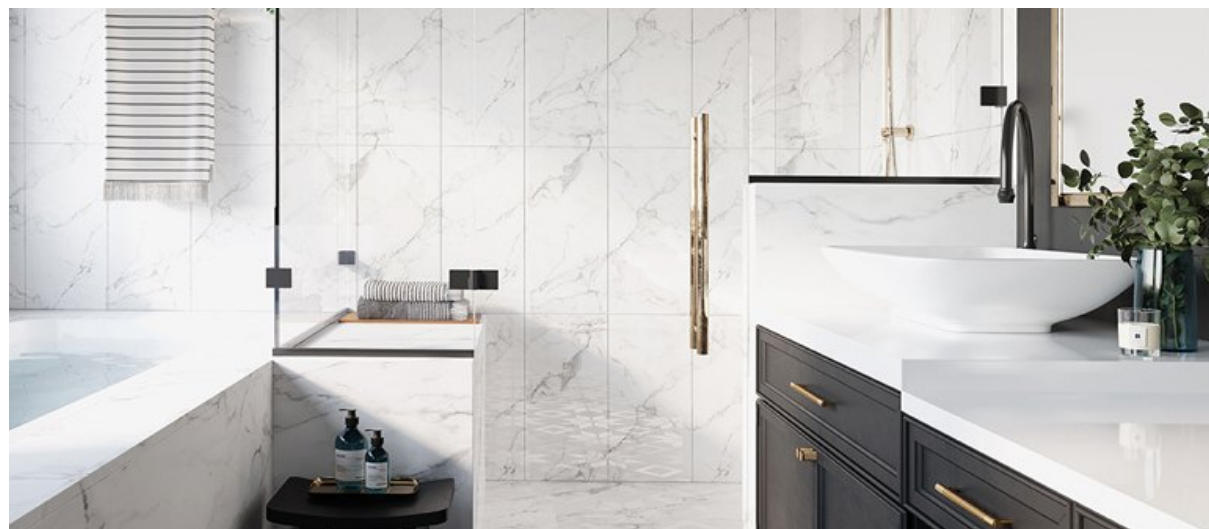
SH306-L / R



SPH135C



BPH135C



RUCCI SERIES SHOWER HINGES/CLAMPS

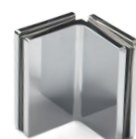
EUROPA SHOWER HINGE / CLAMPS



ESH90CB



ESH180CB



EGC90G



EGC90



ESH90C



ISH90



ESH90G



ISH90G



ISH135G



ISH180



ESH180



EBF180



EGC180



EBF90



RCGC0



RCSH90



RCSH90G



RCGC90G



RCGC90



RCSH180



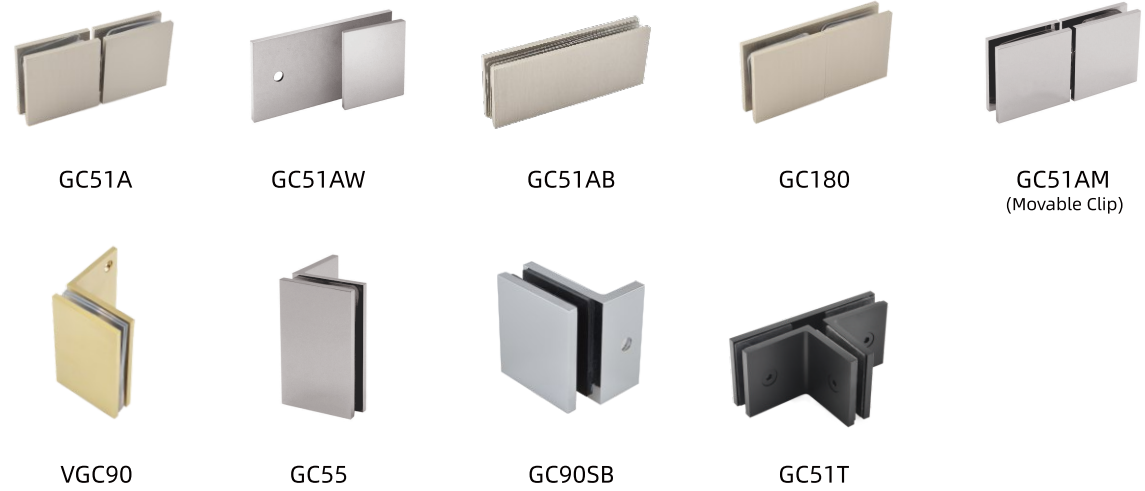
RCGC180

GLASS CLAMPS

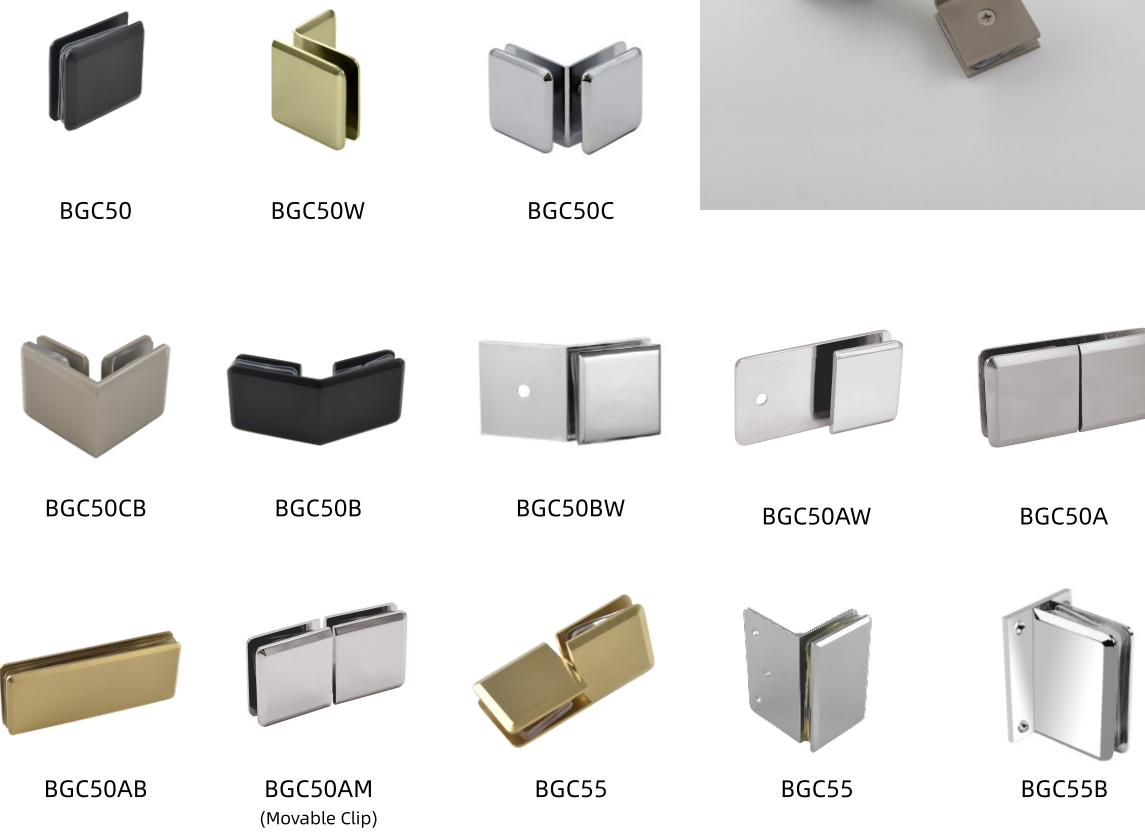
Glass Clamps are designed to secure glass panels in temporary shower enclosures. They assist in maintaining the frameless appearance, and provide a clean looking alternative to U-Channels.



STRAIGHT EDGE GLASS CLAMPS



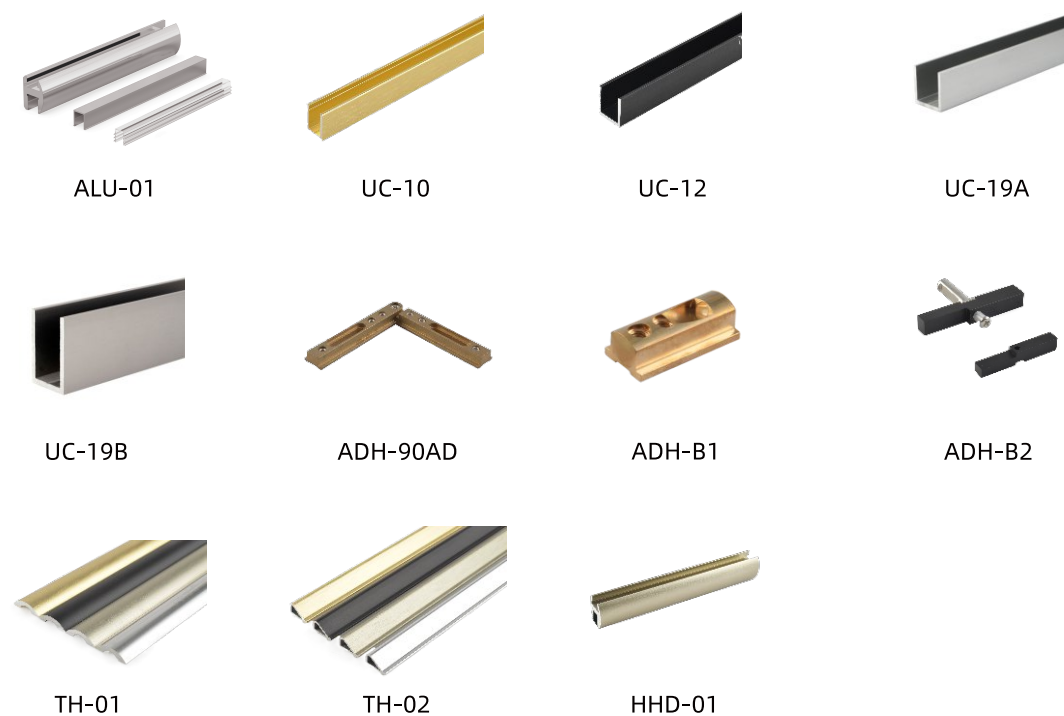
BEVELED EDGE GLASS CLAMPS



HYDRAULIC PATCH FITTING



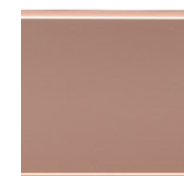
ALUMINUM ACCESSORIES



FINISHED AND COLORS FOR ALUMINUM



Shinning
Brush Copper



Polishing
Rose Gold



Shinning
Brush Rose Gold



Shinning
Brush Gold



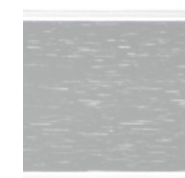
Anodized
Matte Gray



Shinning Brush
Gunmetal Gray



Anodized Matte
Gunmetal Gray



Shinning
Brush Sliver



Anodized Matte
Brushed Black



Shinning
Brush Black



Anodized
Matte Black



Shinning
Polishing Black



Anodized
Matte Gold



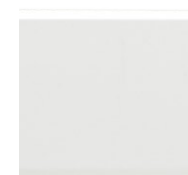
Polishing
Gold



Shinning
Brush Nickel



Shinning
Polishing Sliver

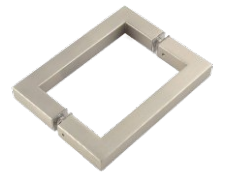


Anodized
Matte Sliver



PULL HANDLES

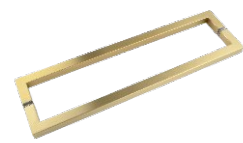
LINK offers a variety of pull handles in numerous finishes. Each one is constructed of the finest materials. Custom designs and finishes are also available.



SPH6X6 / 8X8



SQ LH6X6 / 8X8



SQ TB18X18 / 24X24



TPH6X6 / 8X8



TPH6X6A



MCH6X6 / 8X8



LH6X6 / 8X8



TB18X18 / 24X24



LH12



ADLH01

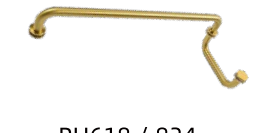
TOWEL BAR / PULL COMBINATIONS



LH618/LH824



TB018 / 024



PH618 / 824



SPH18 / 24



SP618 / 824



SQ TB018 / 024



SLHD18/24

COMMERCIAL DOOR HANDLES



CCP10X10/ 12X12
18X18/ 24X24



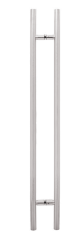
C24SQLH



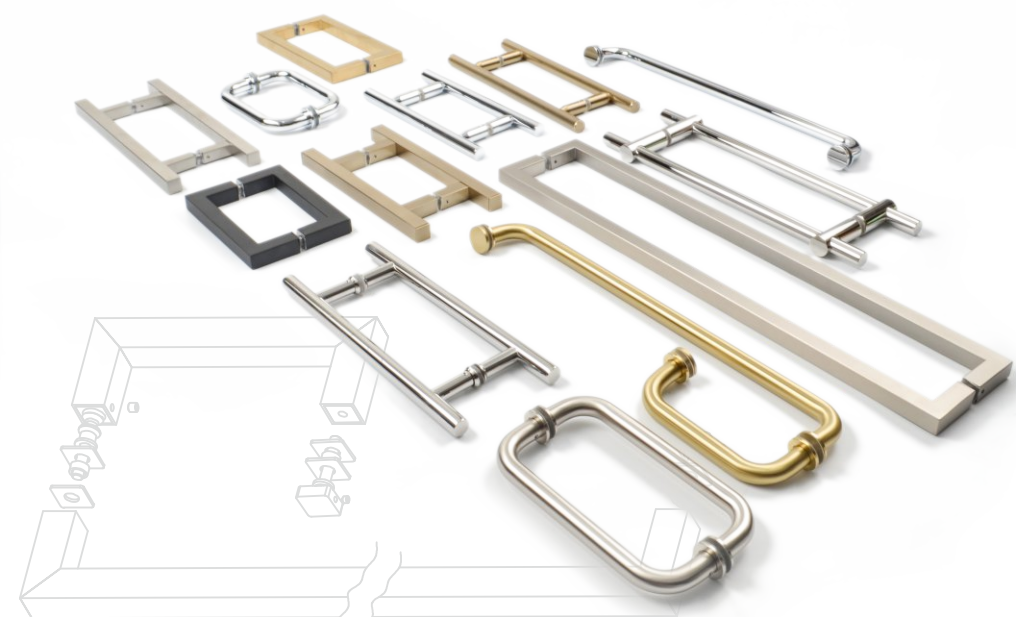
C48SQLH
(36"/48"/60"/72")



C24LH



C48LH
(36"/48"/60"/72")



CPSQ12X12/ 24X24



CCP010x10/ 12x12

SHOWER ROOM HARDWARE

SHOWER DOOR KNOBS



Z5102



Z5103



Z5104



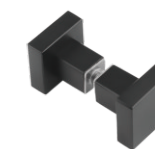
Z5105



Z5107



Z5108



Z5109



Z5110



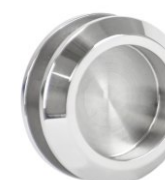
Z5106



Z5111



Z5112



TDL55



AL01



AL02



AL03



AL04



AL05



AL06

SHOWER ROOM HARDWARE



GLASS
BRACING BAR

ADJUSTABLE WALL MOUNT SUPPORT BAR
SSPB01AD



CEILING MOUNT SUPPORT BAR
SSPB02



The Support Bar complements many LINK square corner style hinges. The bar stabilizes fixed panels of glass in enclosures that do not go to the ceiling. After ordering the bar itself, choose from a number of various fittings to complete the desired application. The fittings come with nylon-tipped set screws that secure the glass and prevent metal-to-metal contact. Finishes are available to match many popular decors. No holes or cut-outs are required in the glass.



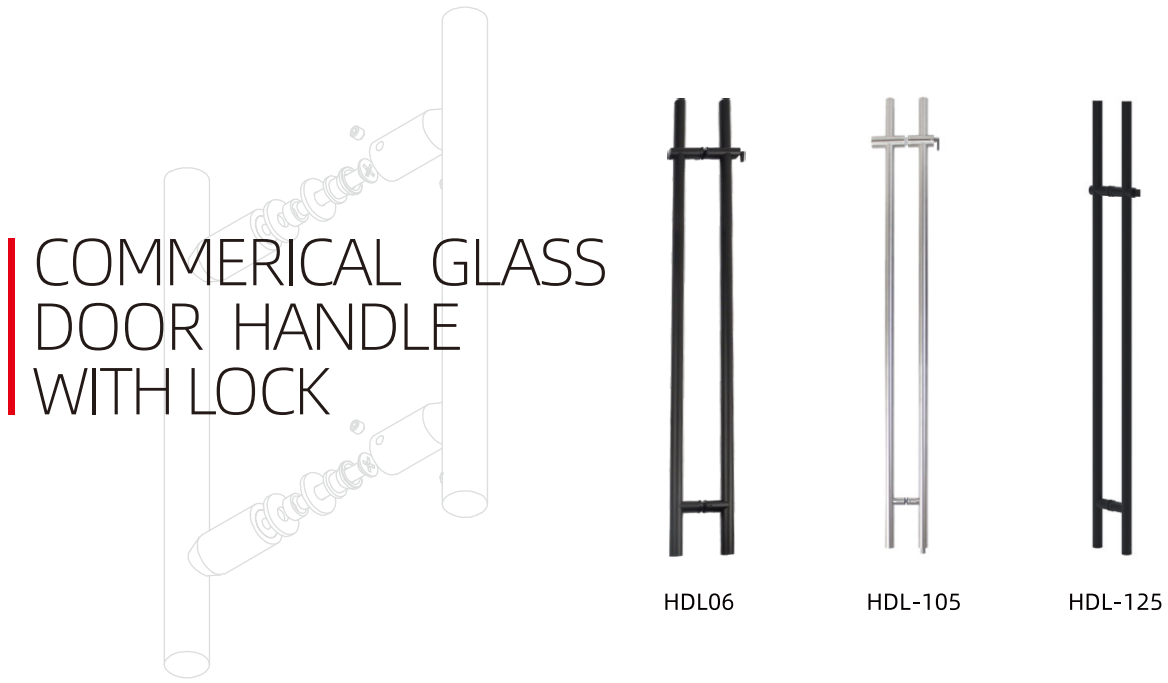
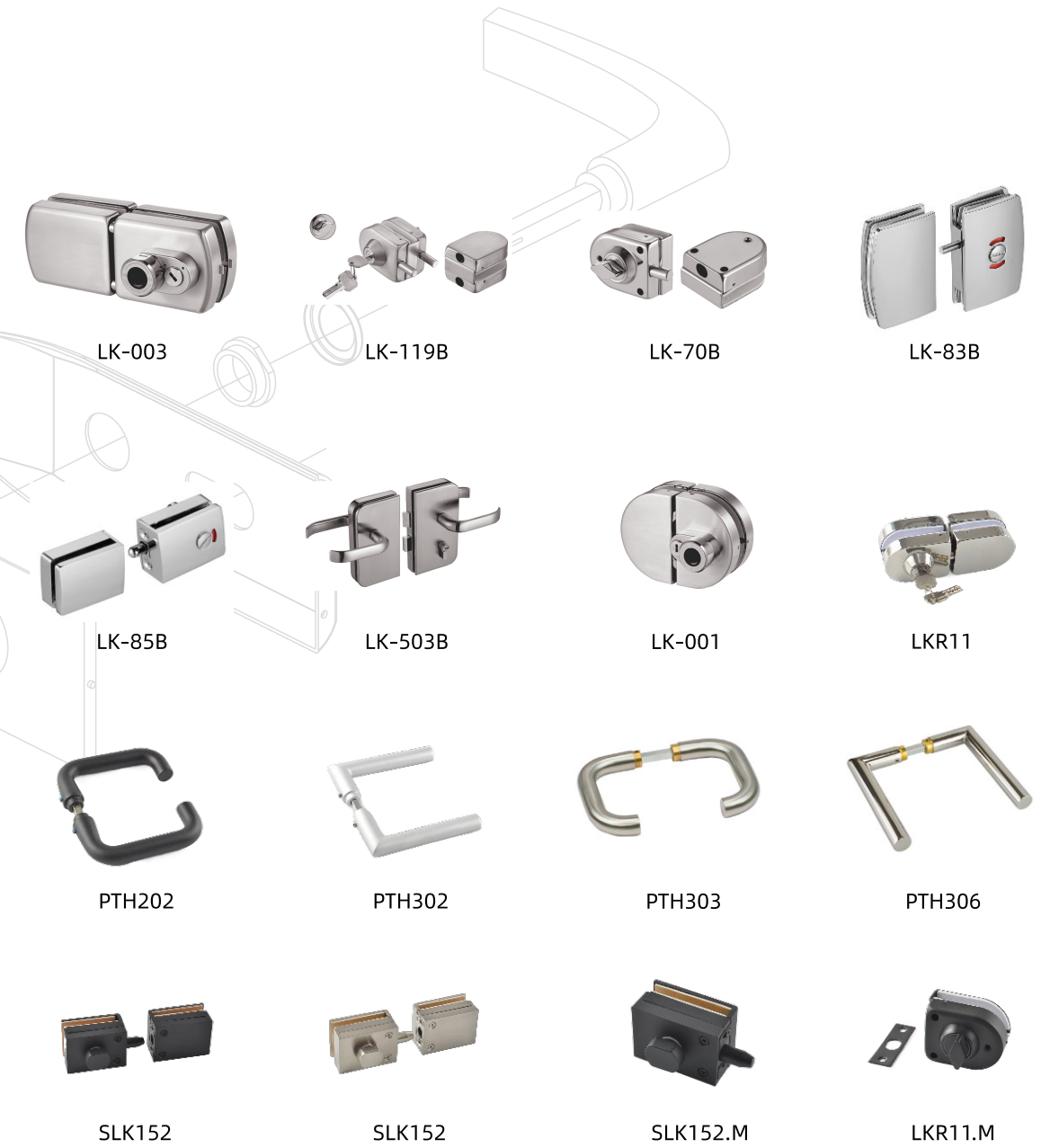
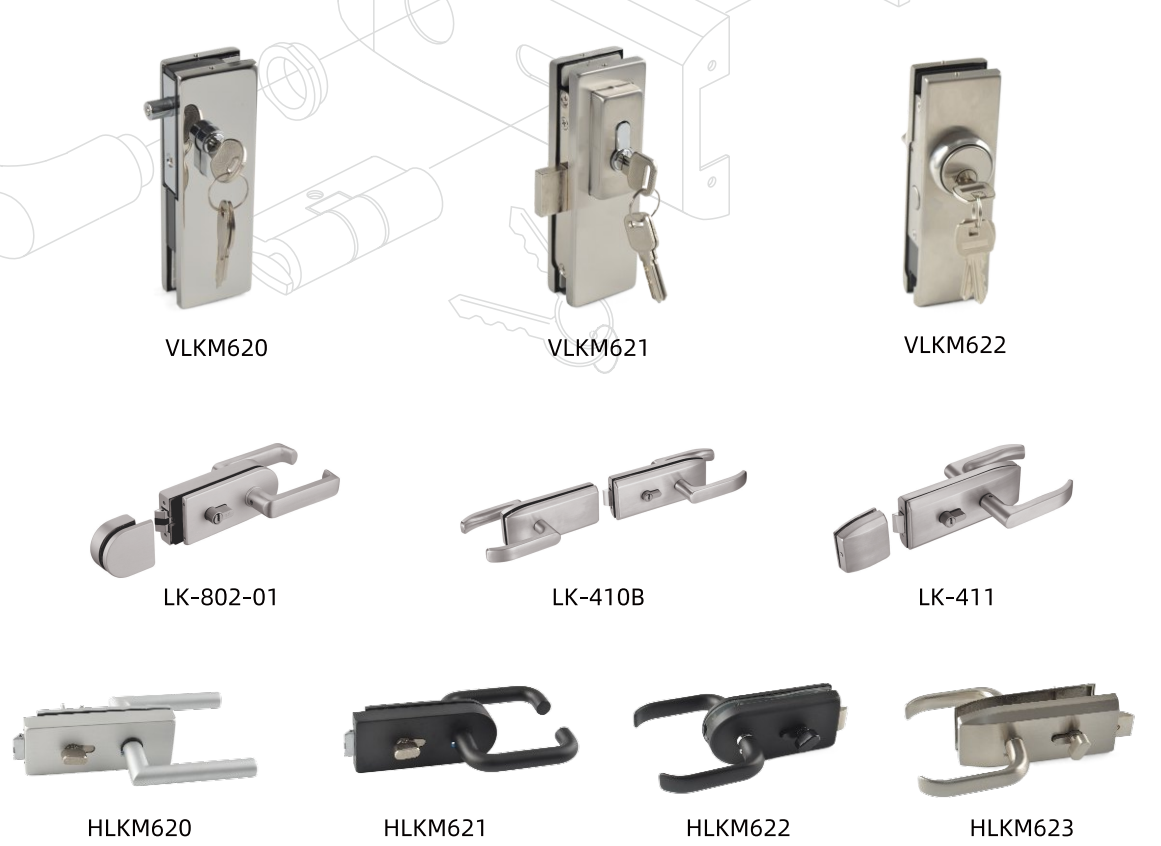
WALL MOUNT BRACING BAR
RSPB01



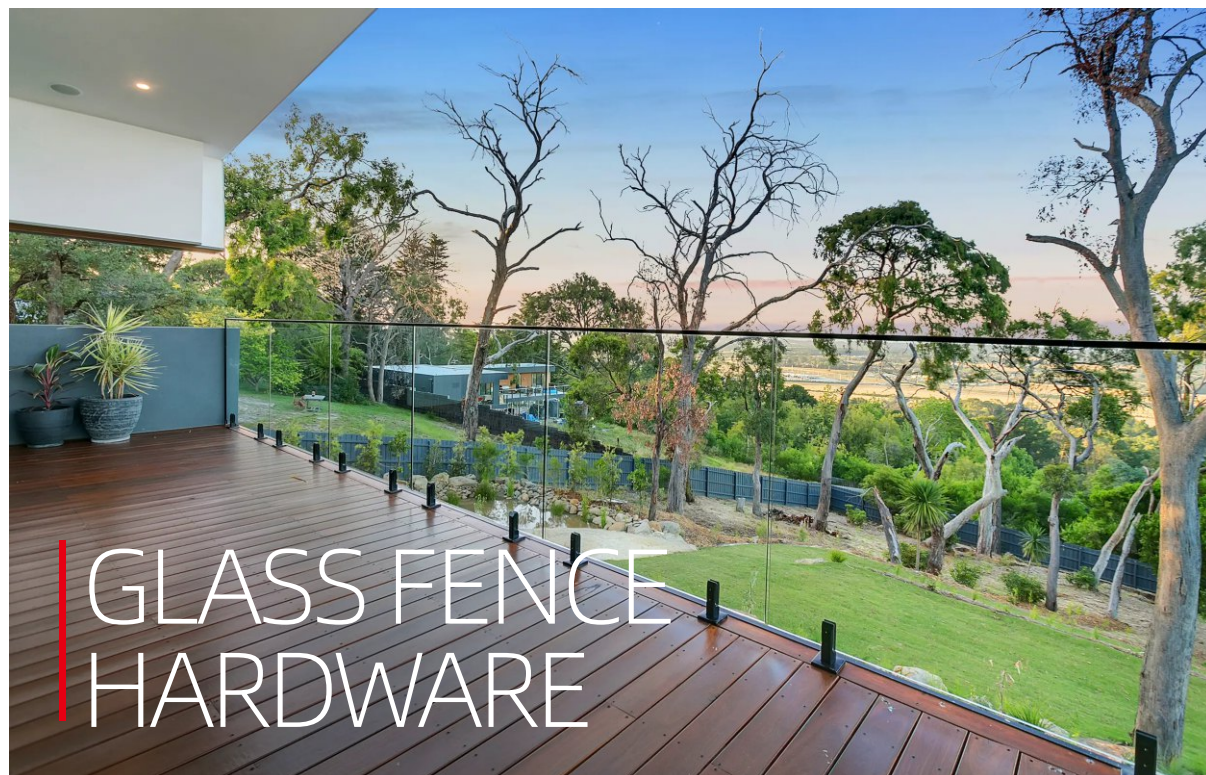
RSPB02



RSPB03AD



COMMERICAL GLASS
DOOR HANDLE
WITH LOCK



Spigots | Hinges | Clamps | Locks

Material: SS2205 / SS316

Speciality: ANTI-UV Finished, Non-Conducting



SG-002



SG-002



AD SG001



SH SG009



GSG001



GSG001



GSG002



SH SG003



STANDOFF SERIES



GS5019S



GS5025S



GS5050S



GS5019R



GS5025R



GS5050R



GLASS ANCHOR



GA19/10



GA19/20



GA19/30



GA25/10



GA25/20



GA25/30



GA32/10



GA32/20



GA32/30

SLEEVE OVER

"Sleeve Over" Glass Clamps provide a mechanical fastener to assist with the shear forces placed on the glass panels. They also hold the glass panels in position while the applied silicone sealant in the joint cures. Clamps are secured in place by nylon tipped Allen set screws.



CGC90



CGC135



CGCAD



CGCWL



CGCWR



CGCT



SC31



SC33



SC33S



SC34



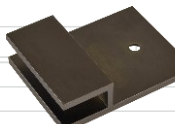
OPF1 1010SQ



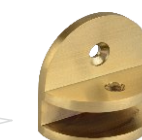
SB10HLSQ



SB10SQ



SB10VLSQ



HMSB10HL

STANDARD RAILING CLAMPS



GC-053B



GC-052



GC-052B



GC-053



GC-056



GC-056B



GC-057



GC-057B



GC-065



GC-066

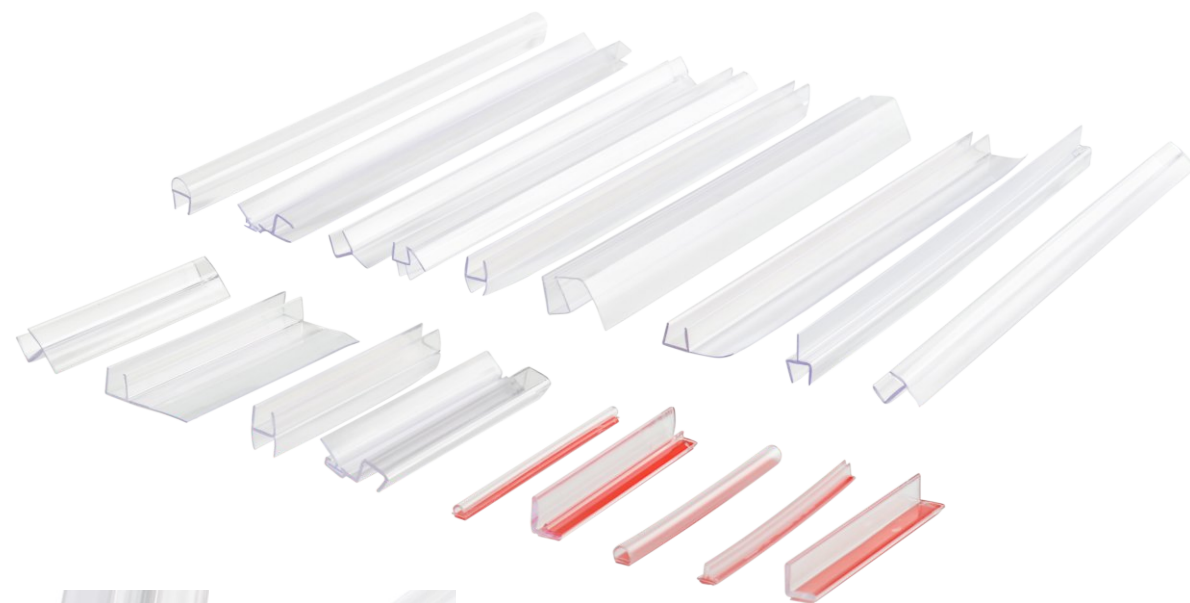


GC-064



GC-067

PVC SEALS



PS-66

PS-T6



PS-T11



PS-T12



PS-T98



PSH01



PS-T9



PS-T8



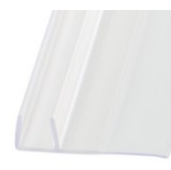
PS-66 3/8



PS-T10



PSN12



PS-LL01



PS-T99



PS-S11



PSL-S12



PST-S20



PS-S33

FINISHED AND COLORS



Explore a world with endless possibilities!

Bring your vision to life with the vast range of finishes in the Link Hardware color range.

From classic chromes and moody gun metals all the way to vibrant golds and timeless nickels, the range offers designers, interior decorators and consumers unlimited options to satisfy the most discerning tastes. In addition to the standard range, we can match custom finishes too!



Satin Chrome



Brushed Rose Gold



Matt White



PVD Gold



Brushed Nickel



Gun Black Dumb Oil



Polished Nickel



Polished Chrome



Gun Black



Brushed Gold



Red Copper



Antique Brass



Matte Black



Brushed Brass



Rose Gold



Brushed Bronze



White



Brushed Gun Black

1 Door wheel clamp for glass door X2



2 Cover plate / Track



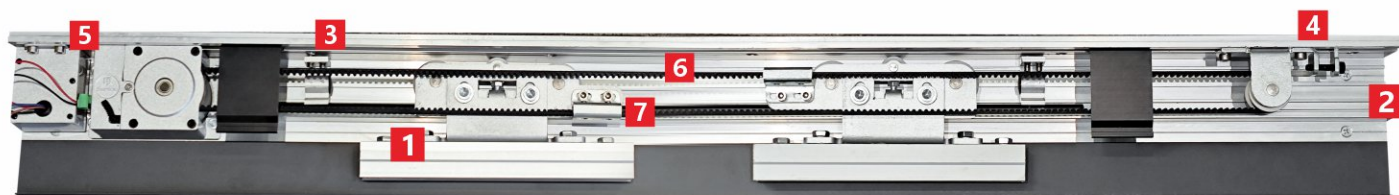
PRODUCT ADVANTAGES

- 1 Auto Self Learning Function
- 2 Less than 50Db Operation Noise
- 3 Excellent Safety and Anti Pinch
- 4 Integrated Design of Motor and Control Board
- 5 Phone Control and Remote Control
- 6 Facilitate Connection to External Equipment

like Micorwave Induction

Passed 500,000 Cycles Test

SUPPORT
MOBILE
APPLET CONTROL
REMOTE
CONTROL



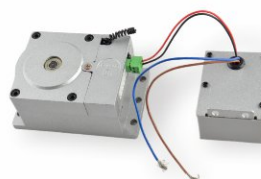
3 Anti-collision block X2



4 Driven wheel



5 Motor+control



6 Belt



7 Belt clamp X2



8 Pendulwn stop



9 Remote

Standard configuration



OPTIONAL EXTERNAL SENSOR

Humanoid image sensor



Contact free inductive switch



Opening and closing type	Single door	Double door
Door leaf weight x leaf	330lbs. x1 (150kg x1)	220lbs. x2 (100kg x2)
Door leaf width	Minimum width 25in. (650mm) Maximum width 51in. (1300mm)	
Door opening /closing speed	8in./s - 16in./s (200mm/s - 400mm/s)	
Door opening dwell time	0-30s Adjustable	
Input voltage and rated power	Voltage: 110-240v Power: 100W	
Manual thrust	20N	
Motor type	Permanent magnet synchronous motor	
Maximum torque	1.2 Nm	



ABOUT US

APPLICABLE:

- Type: Soft Close Sliding System
- Rail Material: Aluminum
- Maximum Door Weight: 220lbs. (100kg)
- Minimum Door Width: 43in. (1100mm)
- Suitable Glass Thickness:
3/8in. To 1/2in. (10 mm To 12 mm)
- Rail Standard size:
86in. / 118in. / 173in.
(2200mm / 3000mm / 4400mm)
- Wall/Glass Mount
- Top/Side Mount

ITEM NO. LKSL970

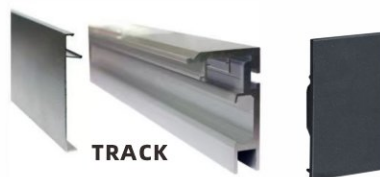
COMPLETE SET INCLUDING:



① HYDRAULIC DAMPER X 2



② ROLLER X 2



③ TRACK SIDE COVER X 2



④ HANDLE X 1



⑤ FLOOR GUIDE X 2



⑥ STOPER X 2



ABOUT US

SHOWER ROOM DOUBLE SIDING DOOR SYSTEM

ITEM NO. LCAM73

Maximum Door Weight: 110lbs. (50kg)
Glazing Thickness: 3/8in. To 1/2in. (10 mm To 12 mm)
Glass width: 31in.-47in. (800-1200mm)

COMPLETE SET INCLUDING:

- ① TRACK X 1 ④ STOPER X 2
- ② ROLLER X 8 ⑤ TRACK TO WALL CONNECTOR X 2
- ③ FLOOR GUIDE X 1



**ONE SLIDING
AND ONE FIXED
PANEL SYSTEM**

ITEM NO. SQ4
Crescent Series



ITEM NO. CLN70
Serenity Series



COLOR SELECTION



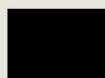
Brushed
Bronze



Brushed
Stainless
Steel



Polished
Stainless
Steel



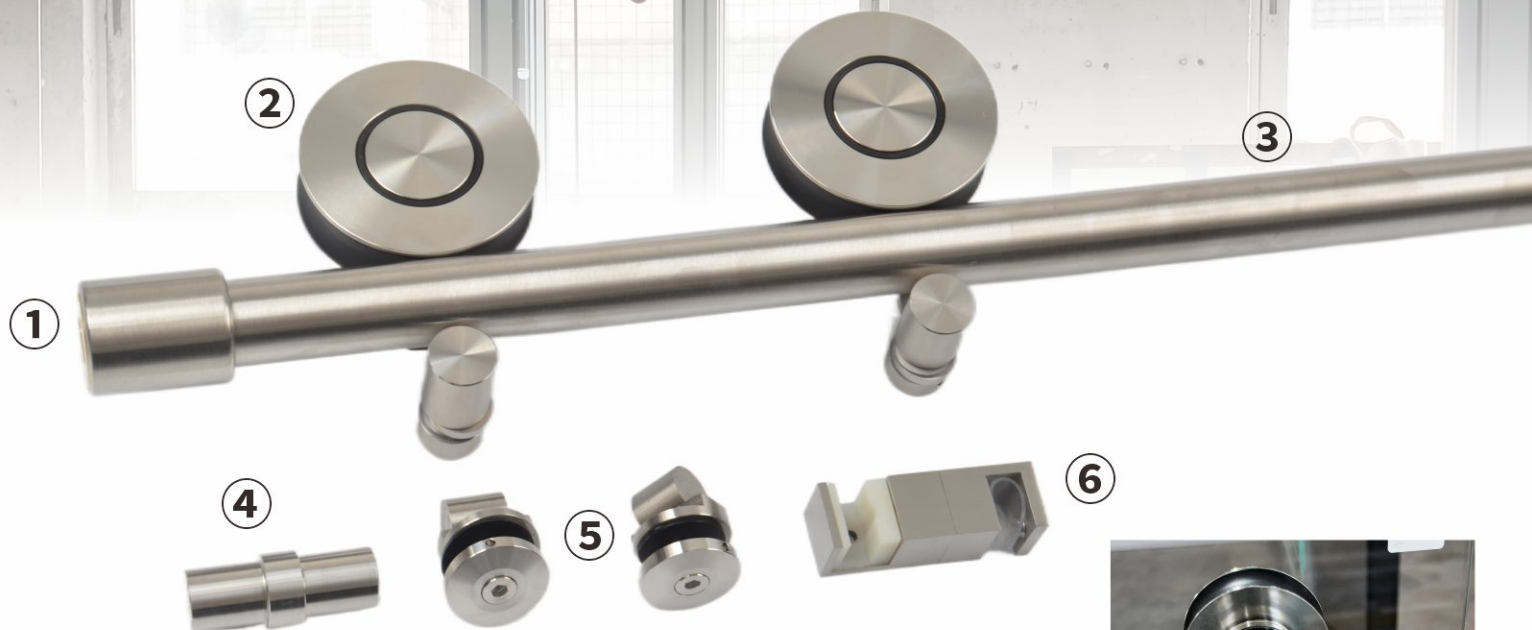
Matte
Black



Satin
Brass



ABOUT US



Passed 50,000 Cycles Test

SOFT CLOSING

Item NO. SR2SC30

SLIDING DOOR SYSTEM - ROUND BAR

our state-of-the-art sliding glass bathroom door hardware with an advanced buffer system. Constructed from stainless steel 304, this hardware ensures durability and corrosion resistance. The integrated buffer mechanism guarantees a quiet and smooth sliding action, creating a serene bathing experience. Safety is a top priority

Glazing Thickness: 5/16 in. To 3/8 in. (8 mm To 10 mm)

Maximum Door Height: 82 in. (2080mm)

Maximum Door Width: 39 in. (1000mm)

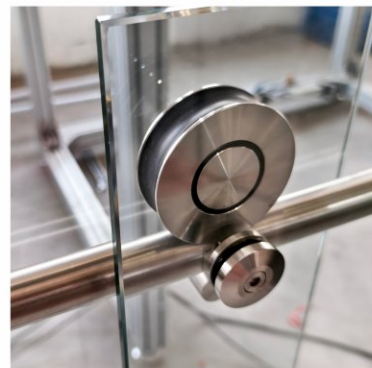
Maximum Door Weight: 110 lbs. (50kg)

COMPLETE SET INCLUDING:

- ① TRACK TO WALL CONNECTOR X 2
- ② ANTI-JUMP ROLLER X 2
- ③ BAR WITH BUFFER X 2
- ④ BAR CONNECTOR X 1
- ⑤ FIXED GLASS MOUNT CONNECTOR X 2
- ⑥ FLOOR GUIDE X 1



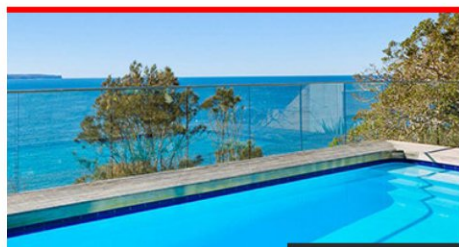
Bar Length Customizable



ABOUT US

Add: Xinhui Dist., Jiangmen City, Guangdong Province, China **Email:** info@linkhardware.com <http://www.linkhardware.com>

Frameless Glass Railing Aluminium Profiles



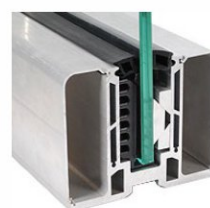
LKAL-GZD215A
Top Mount Glass
Supporting System
With LED

Glazing Thickness:
12mm - 14mm



LKAL-ZW1303A
Top Mount Glass
Supporting System
With LED

Glazing Thickness:
12mm - 14mm



LKAL-ZW3416
Top Mount Glass
Supporting System

Glazing Thickness:
12mm - 14mm



LKAL-ZW1308
In-Floor or Top Mount Glass
Supporting System With LED

Glazing Thickness:
10mm - 20mm



LKAL-ZW3112
In-Floor or Top Mount
Glass Supporting System

Glazing Thickness:
10mm - 20mm



INSTALLATION VIDEO



ABOUT US

SOFT CLOSING

INVISIBLE FRAMED DOOR

ITEM NO. QLD06

Total Door Thickness: 1 4/5 in. (45 mm)

Door Width Available:

33 1/2 in. To 47 in. (850mm to 1200mm)

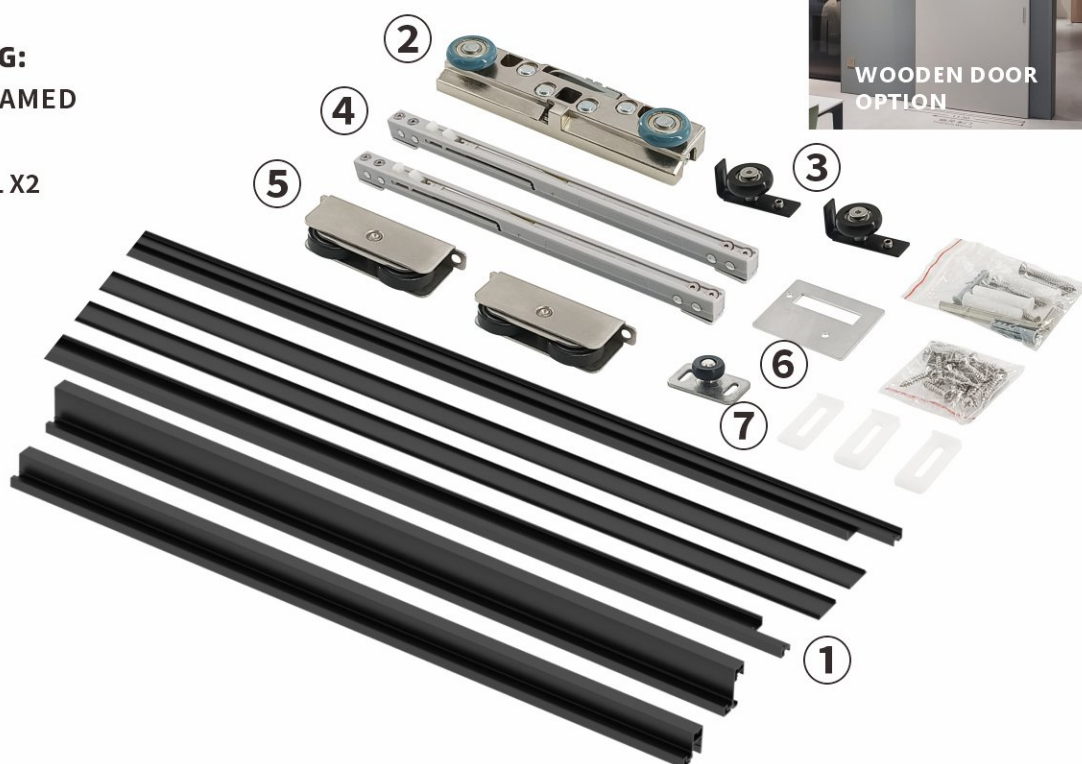
Maximum Door Weight: 132 lbs. (60kg)

The captivating Ghost Sliding Door, a revolutionary design that blends seamlessly into your home decor. Boasting premium-quality silent rollers, it glides open and shut with effortless grace, ensuring a peaceful ambiance free from disruptive noises.

Experience the elegance and innovation of the Ghost Sliding Door - where the boundaries of design are pushed to create a truly captivating entrance.

COMPLETE SET INCLUDING:

- ① ALUMINIUM DOOR FRAMED
- ② DOOR WHEEL X 1
- ③ DOOR GUIDERWHEEL X2
- ④ BUFFER X2
- ⑤ FLOOR WHEEL X 2
- ⑥ RULER TOOLS X 2
- ⑦ FLOOR GUIDER WHEEL X 1



GLASS DOOR



**WOODEN DOOR
OPTION**



ABOUT US

SOFT CLOSING DOUBLE SLIDING DOOR SYSTEM

ITEM NO. PS2SC32

Track Length Customizable

No Glass Cutting

Glazing Thickness: 5/16 in. To 1/2 in. (8 mm To 12 mm)
Maximum Door Weight: 264 lbs. (120kg)

COMPLETE SET INCLUDING:

- ① TRACK X 1
- ② DRIVEN WHEEL X 2
- ③ DRIVEN BUFFER X 2

- ④ GLASS CLAMPS X 4
- ⑤ BUFFER STOPPER X 4
- ⑥ RING PULL HANDLE X 4

- ⑦ FLOOR GUIDE X 1



ABOUT US



LINK
HARDWARE
CHINA

ITEM NO. LKSC052

SOFT CLOSE SLIDING GLASS DOOR SYSTEM

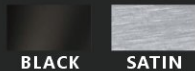
FEATURES

- Suitable for single or multiple sliding doors
- Suitable for sliding doors for families, hotels, office buildings, etc.
- Balance wheel design principle
- Manual push and pull positioning on both sides to achieve balance
- Easy installation, smooth operation, long service life

MATERIALS AND FINISHES

Sliding track: Aluminum
Hanging roller: Aluminum, Anodized

COLOR SELECTION



PRODUCT PARAMETERS :

Glass thickness:

5/16 in. To 3/8 in. (8mm to 10mm)

Maximum door weight: 132lbs. (60kg)

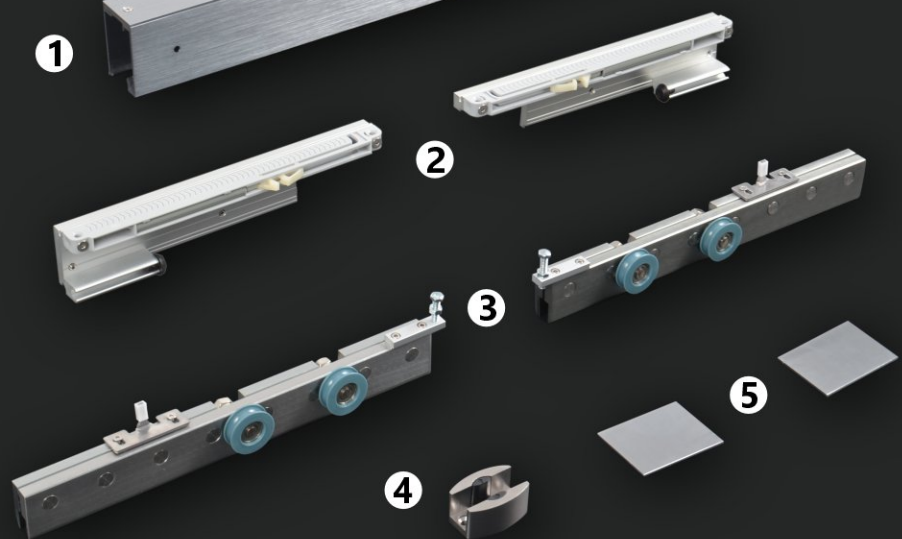
Minimum door width: 31in. (800mm)

Door height formula: LDH+24

NO GLASS CUTTING

COMPLETE SET INCLUDING:

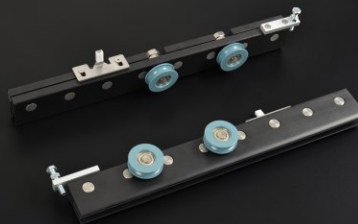
- ① ALU RAIL x1
- ② DAMPER x2
- ③ HANGING ROLLER x2
- ④ FLOOR GUIDE x1
- ⑤ COVER x2



SOFT-CLOSING DAMPER
PREVENT PINCHING



SILENT ROLLERS
SMOOTH SLIDING



2 1/2in. (61.5mm) TRACK,
NARROWER AND MORE
AESTHETICALLY PLEASING
THAN THE SAME TYPE PRODUCTS
ON THE MARKET



ABOUT US

Add: Xinhui Dist., Jiangmen City, Guangdong Province, China Email: info@linkhardware.com <http://www.linkhardware.com>

LOLLIPOP SERIES SLIDING DOOR SYSTEM ITEM NO. LLPSD31

Bar Length Customizable

**OPTIONAL
SOFT CLOSING**

The special wheels for a frameless glass sliding door system. Smooth roller, import quality plastic pieces, stainless steel 304 material metal wheel, stable and durable.

Glazing Thickness:

3/8 in. To 1 1/2 in. (10 mm To 12 mm)

Door Width Available:

33 1/2 in. To 47 in. (850mm to 1200mm)

Maximum Door Weight: 220 lbs. (100kg)

COMPLETE SET INCLUDING:

- ① BAR X 1
- ② ROLLER X 2
- ③ WALL MOUNT FIXTURE X 4
- ④ BAR END CAP X 2
- ⑤ DOOR STOPPER X 2
- ⑥ FLOOR GUIDE X 1

COLOR SELECTION



BLACK BRUSHED POLISHED



ABOUT US



**OPTIONAL
SOFT CLOSING**

CARRIAGE SERIES SLIDING DOOR SYSTEM

ITEM NO. WFRSD31 Bar Length Customizable

Glazing Thickness: 3/8 in. To 1/2 in. (10 mm To 12 mm)
Door Width Available: 33 1/2 in. To 47 in. (850mm to 1200mm)
Maximum Door Weight: 220 lbs. (100kg)

COMPLETE SET INCLUDING:

- | | | |
|------------------------|--------------------------|--------------|
| ① BARX 1 | ④ BAR END CAP X2 | ⑦ HANDLE X 1 |
| ② ANTI-JUMP ROLLER X 2 | ⑤ FLOOR GUIDE X 2 | |
| ③ DOOR STOPPER X2 | ⑥ WALL MOUNT FIXTURE X 4 | |

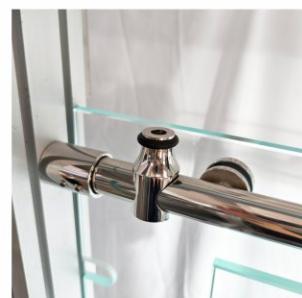
Our premium frameless glass sliding door rollers, crafted with the finest stainless steel for unparalleled durability. Each component embodies elegance and practicality, boasting a timeless design reminiscent of ancient Chinese carriage wheels, blending traditional aesthetics with modern functionality.

The rollers ensure smooth, effortless gliding, while the innovative silent wheels whisper quietly, creating a serene ambiance in any space.

Invest in these exquisite hardware solutions for your home or office, and experience the luxury of quiet, durable operation that exceeds all expectations.



COLOR SELECTION



ABOUT US

Add: Xinhui Dist., Jiangmen City, Guangdong Province, China Email: info@linkhardware.com <http://www.linkhardware.com>

HYDURALIC PATCH DOOR RAIL WITH LOCK

ITEM NO. HDR100



APPLICABLE:

Finishes
Available:  

- Glazing Thickness:
3/8 in. To 1/2 in. (10 mm To 12 mm)
- Maximum Door Weight: 220lbs (100kg)
- Lock Option Available
- Works for Both Left and Right Door Openings

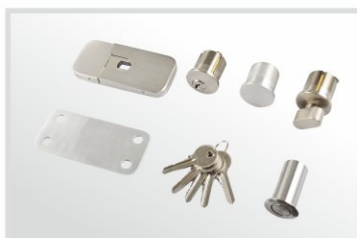
Door Rail Length Customizable

- Closing Speed and Brake Speed Adjustable
- Hydraulic Closer in Bottom Door Rail

No Floor Excavation Needed

- Passed 500,000 Cycles Test

DOOR LOCK OPTIONAL



ABOUT US



HDL SERIES

ITEM NO. HDL06

LOCKING HANDLE

Description

- Our HDL Series locking handle is available in various configurations with a lever.
- Large Format Interchangeable Core (LFIC) and Small Format Interchangeable Core (SFIC) options.
- The locking handles accommodate ADA.
- compliant project requirements.
- Staggered and non.
- staggered locking handle versions available.
- Options: Top-locking into the ceiling or bottom.
- locking into the floor.
- Material: 304 stainless steel.
- Lengths available: 48-108"

COLOR SELECTION



**MORE
DETAILS**



ABOUT US





Item NO. EN1SC31

SOFT CLOSING SLIDING DOOR SYSTEM EXTREMELY NARROW TRACK

Glazing Thickness: 1/4 in. To 5/16 in. (6 mm To 8mm)

Maximum Door Height: 82 in.(2080mm)

Maximum Door Width: 39 in.(1000mm)

Maximum Door Weight: 90 lbs.(41kg)

SOFT CLOSING

Track Length Customizable

Passed 50,000 Cycles Test

COMPLETE SET INCLUDING:

- ① TRACK X 1
- ② TRACK TO WALL CONNECTOR X 2
- ③ FLOOR GUIDE X 1
- ④ THRESHOLD X 1
- ⑤ ROLLER GLASS CLAMP X 2
- ⑥ PULL HANDLE X 1



ABOUT US



BY-PASS DOUBLE SIDING DOOR SYSTEM

ITEM NO. SRDL32

Track Length Customizable

Glazing Thickness: 5/16 in. To 3/8 in. (8 mm To 10 mm)

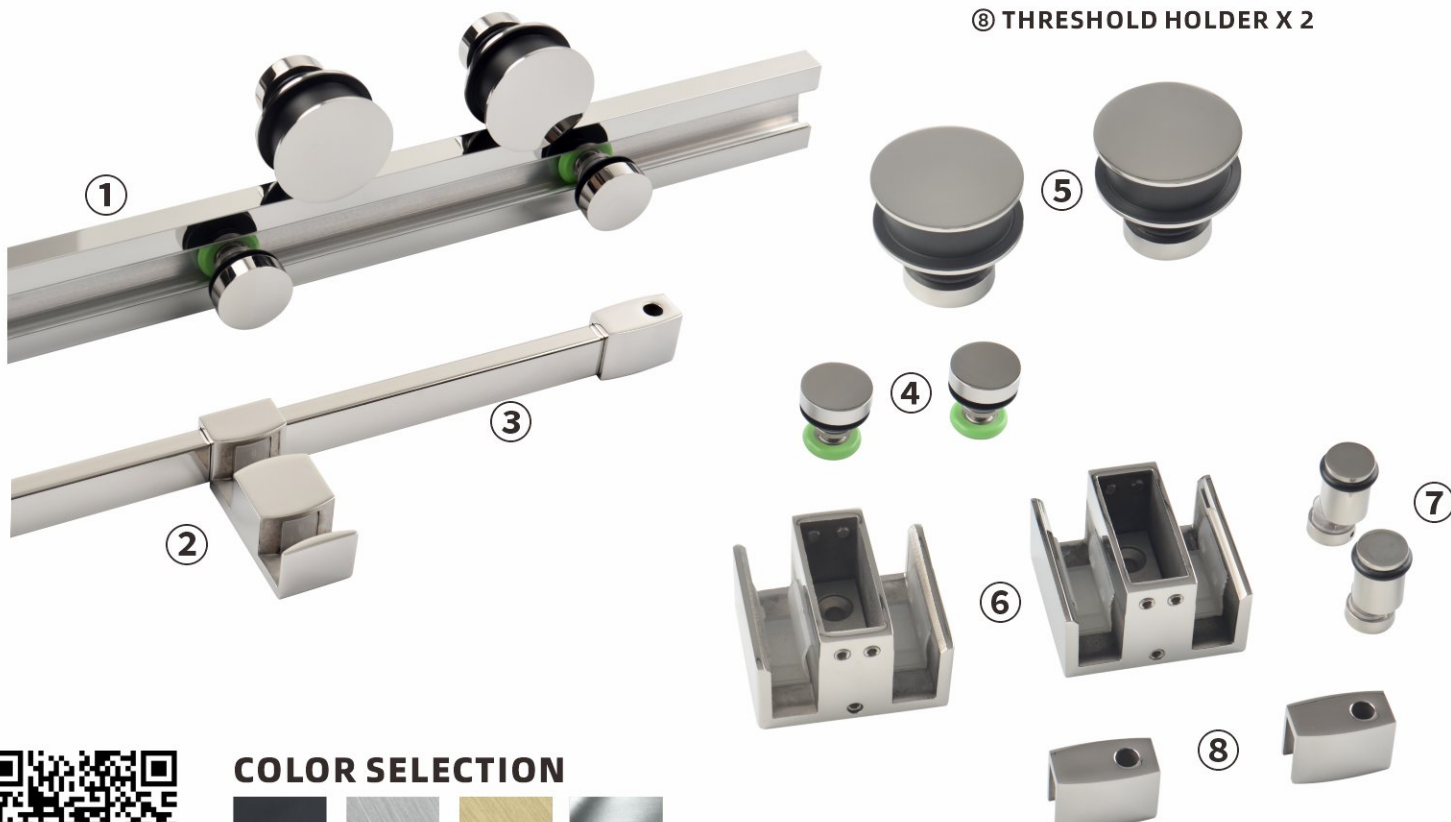
Maximum Door Height: 82 in.(2080mm)

Maximum Door Width: 39 in.(1000mm)

Maximum Door Weight: 110 lbs.(50kg)

COMPLETE SET INCLUDING:

- ① TRACK X 1
- ② FLOOR GUIDE X 1
- ③ THRESHOLD X 1
- ④ FRONT GLASS ROLLER X2
- ⑤ BACK GLASS ROLLER X2
- ⑥ TRACK TO WALL CONNECTOR X 2
- ⑦ ANTI-JUMP X 2
- ⑧ THRESHOLD HOLDER X 2



COLOR SELECTION



SHOWER ROOM SINGLE SLIDING DOOR

SOFT CLOSING

Track Length Customizable

Passed 50,000 Cycles Test

Glazing Thickness: 5/16 in, To 3/8 in. (8 mm to 10 mm)

Maximum Door Height: 82 in.(2080mm)

Maximum Door Width: 39 in.(1000mm)

Maximum Door Weight: 110 lbs.(50kg)

Item NO. SR1SC31

COMPLETE SET INCLUDING:

- ① TRACK X 1
- ② BUFFER X 1
- ③ ROLLER X 2
- ④ TRACK TO
WALL CONNECTOR X 2
- ⑤ ANTI-JUMP X 2
- ⑥ ANTI-JUMP COVER X 2
- ⑦ FLOOR GUIDE X 1
- ⑧ FIXED GLASS MOUNT X 2

COLOR SELECTION





LINK
HARDWARE
CHINA



ABOUT US

Add: Xinhui Dist., Jiangmen City, Guangdong Province, China

Email: info@linkhardware.com http://www.linkhardware.com



SOFT CLOSING BY-PASS DOUBLE SLIDING DOOR SYSTEM

Item NO. SR2SC32

Glazing Thickness: 5/16 in. To 3/8 in. (8 mm To 10 mm)

Maximum Door Height: 82 in. (2080mm)

Maximum Door Width: 39 in. (1000mm)

Maximum Door Weight: 110 lbs. (50kg)

Track Length Customizable

Passed 50,000 Cycles Test

COLOR SELECTION



BLACK



BRUSHED



POLISH

SR2SC32 is a complete set of double-door shower room sliding door matching, only need to customize the glass, can be installed, a full set in accordance with the American size standard, Easy and convenient installation.

WHY IT'S WORTH BUYING

Every product passes our strict quality inspection



01

DOUBLE DOORS OPEN

SR2SC32 shower door set design double door can be opened, extended door space

02

DOUBLE SOFT-CLOSING

Both sides are equipped with buffer hydraulic rods, no matter which side opens the door

03

SUITABLE FOR US MOUNTING SIZES

This product is suitable for the American conventional bathroom opening installation size design

04

TRACK SIZE CAN BE CUSTOMIZED

The track size can be cut according to the length of the bathroom, without affecting the installation



COMPLETE SET INCLUDING:

① TRACK X 1

② ROLLER X 4

③ ANTI-JUMP X 4

④ TRACK TO WALL CONNECTOR X 2

⑤ FLOOR GUIDE X 1

⑥ BUFFER X 4