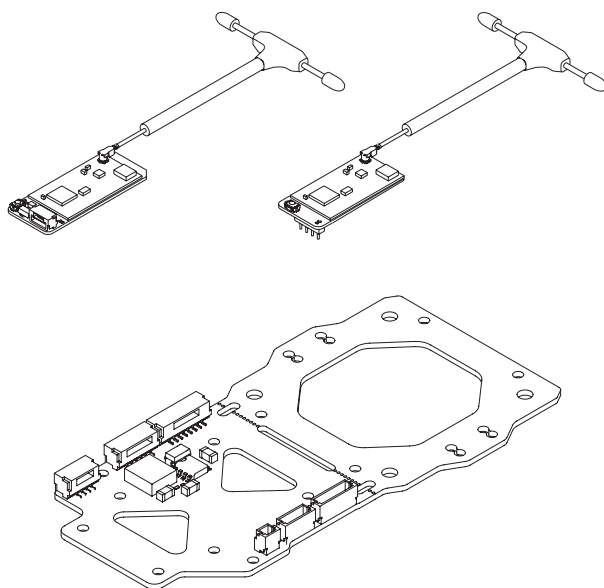


# Headtracker Datalink System

## User Manual



## Using this Manual – Legend



Important



Tips



Explanation

# Revision History

Date	Document Version
2024.05.30	V1.0

Date	Document Version
2025.01.17	V1.1

## Caution

1. Make sure that the external power supply for the Integrated Base Plate is a lithium battery (2S~6S) with an input voltage between 7.4V~26.4V. Otherwise, the equipment may work abnormally or be damaged.
2. DO NOT short circuit any power output and GND on the Integrated Base Plate. Otherwise, the equipment may be damaged and may not work properly.
3. Follow the instructions in the user manual when installing the gimbal. Incorrect installation may cause the gimbal to not work properly.
4. Make sure that all connectors are secure and all parts are work properly.
5. DO NOT obstruct or twist the antennas. Otherwise, the transmission may be affected or blocked.
6. Make sure that there are no other transmitting devices in the surrounding area that may cause interference. DO NOT use the same frequency band as other devices. Otherwise, the transmission performance will be affected.
7. Make sure you fully understand and abide by local laws and regulations before using this product.

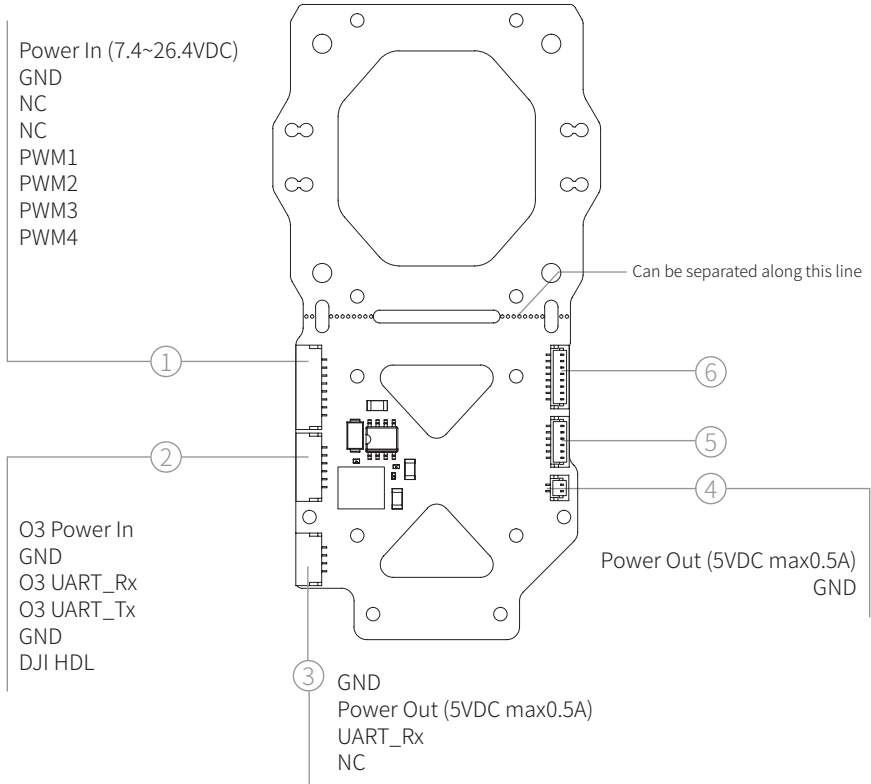
# Catalog

<b>Diagram</b>	<b>1</b>
C-20T Integrated Base Plate	1
Datalink (Optional)	2
Accessories	3
<b>Installation</b>	<b>4</b>
Installing Gimbal and DJI O4 Pro	4
Installing Gimbal and DJI O4 (With Housing)	5
Installing Gimbal and DJI O4 (Without Housing)	8
<b>Installation</b>	<b>9</b>
Installing Gimbal and DJI O3	9
Installing Gimbal and Walksnail Moonlight	10
Installing Gimbal and Walksnail Avatar	12
Wiring Diagram	13
Installing Datalink Ground Unit	14
Antenna Transmission Zone	14
Linking	15
<b>Appendix 1 Dimensions</b>	<b>16</b>



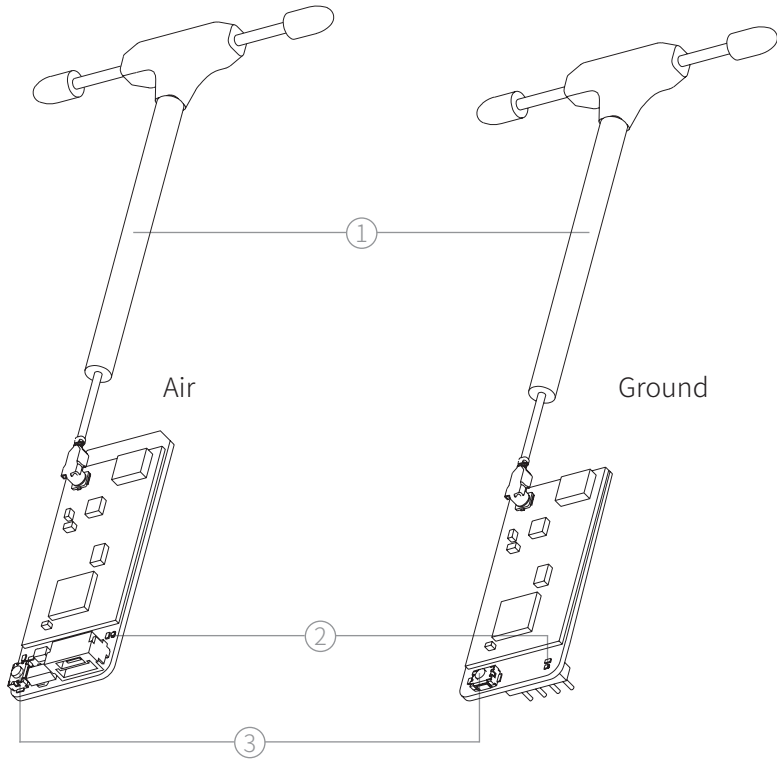
# Diagram

## C-20T Integrated Base Plate



1. Power-communication Port (SM08B-GHS-TB)
2. DJI 3-in-1 Port (SM06B-GHS-TB)
3. Datalink Port (SM04B-GHS-TB)
4. Power Out Port (BM02B-SRSS-TB)
5. DJI Transferring Port (BM06B-SRSS-TB)
6. Gimbal Transferring Port (BM08B-SRSS-TB)

## Datalink (Optional)



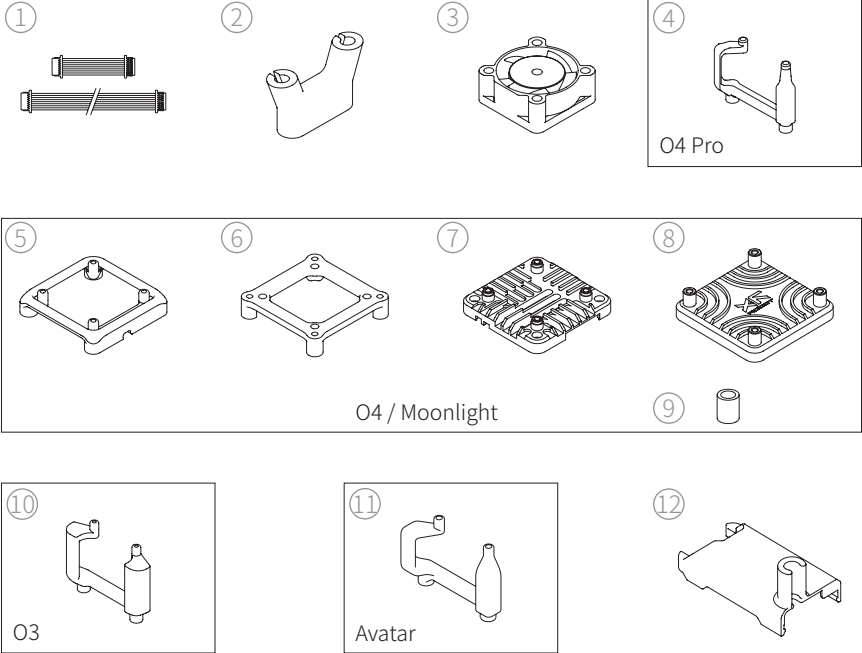
1. Datalink Antenna

2. Linking Status Indicator

3. Linking Button



## Accessories



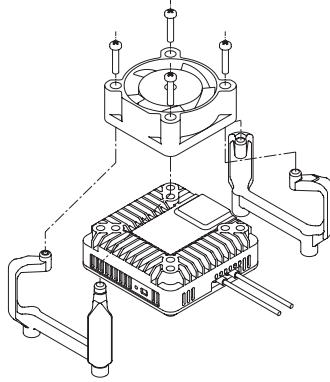
1. Gimbal Transferring Cable
3. Cooling Fan
5. Moonlight Fan Mount
7. O4 Air Unit Top Housing
9. Isolate Post
11. Avatar Air Unit Mount

2. Antenna Mount
4. O4 Air Unit Pro Mount
6. Moonlight Air Unit Mount
8. O4 Air Unit Bottom Housing
10. O3 Air Unit Mount
12. Datalink Ground Unit Cover

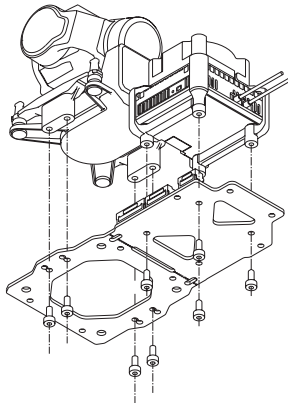
# Installation

## Installing Gimbal and DJI O4 Pro

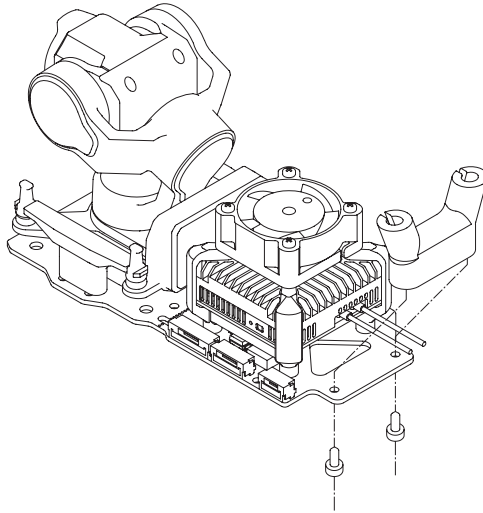
1. Install the camera on the gimbal, and connect the coaxial cable to the air unit. Refer to *C-20T User Manual*.
2. Fix the Cooling Fan and the air unit on the O4 Air Unit Pro Mount with four M1.7 x L10mm tapping screws.



3. Fix the gimbal on the Integrated Base Plate with four M2 x L4mm machine screws. Connect the power-communication port of the gimbal and the gimbal transferring port with a Gimbal Transferring Cable. Fix the air unit on the Integrated Base Plate with four M2 x L6mm tapping screws. Connect the air unit and the DJI transferring port of the Integrated Base Plate with a 3-in-1 cable in the O4 Pro package. Connect the Cooling Fan to the power out port of the Integrated Base Plate.

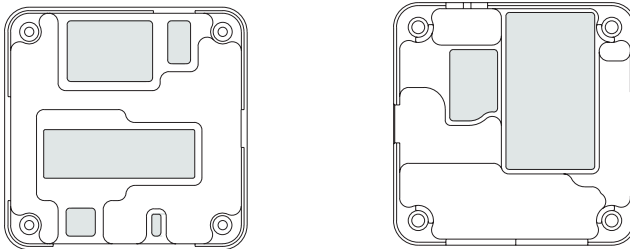


4. Fix the Antenna Mount on the Integrated Base Plate with two M2 x L6mm tapping screws, and snaps the antennas into the Antenna Mount.

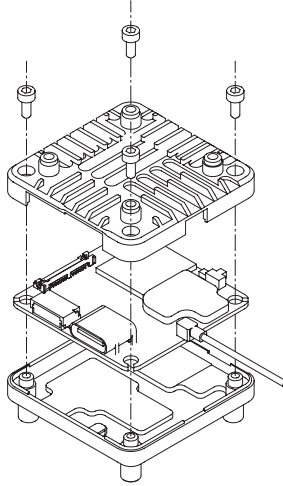


## Installing Gimbal and DJI O4 (With Housing)

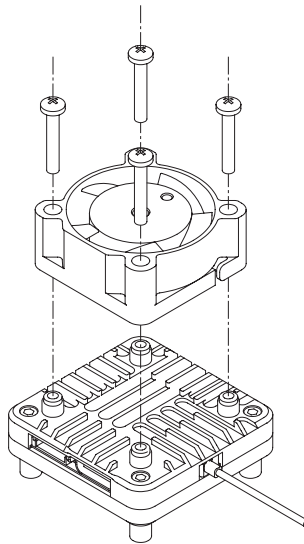
1. Install the camera on the gimbal, and connect the coaxial cable to the air unit. Refer to *C-20T User Manual*.
2. Smear thermal gel to the shaded area in the diagram.



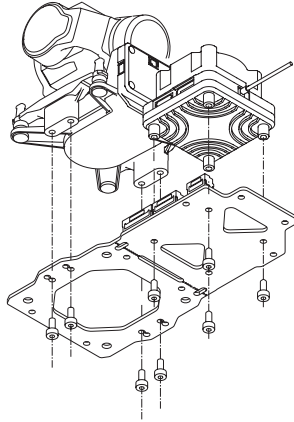
3. Install the housing with four M1.6 x L4mm machine screws.



4. Fix the Cooling Fan on the air unit with four M2 x L12mm machine screws.



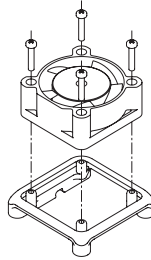
5. Fix the gimbal on the Integrated Base Plate with four M2 x L4mm machine screws. Connect the power-communication port of the gimbal and the gimbal transferring port with a Gimbal Transferring Cable. Fix the air unit on the Integrated Base Plate with four M2 x L4mm machine screws. Connect the air unit and the DJI transferring port of the Integrated Base Plate with a 3-in-1 cable in the O4 package. Connect the Cooling Fan to the power out port of the Integrated Base Plate.



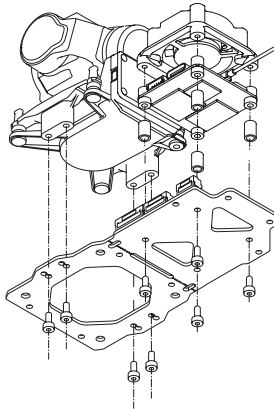
6. Fix the Antenna Mount on the Integrated Base Plate with two M2 x L6mm tapping screws, and snaps the antennas into the Antenna Mount. (Diagram refer to *Installing Gimbal and DJI O4 Pro – step 4* in this manual)

## Installing Gimbal and DJI O4 (Without Housing)

1. Install the camera on the gimbal, and connect the coaxial cable to the air unit. Refer to *C-20T User Manual*.
2. Install the Cooling Fan on the Moonlight Fan Mount with four M1.7 x L10mm tapping screws.



3. Fix the gimbal on the Integrated Base Plate with four M2 x L4mm machine screws. Connect the power-communication port of the gimbal and the gimbal transferring port with a Gimbal Transferring Cable. Thread four M2 x L16mm tapping screws through the Intergrated Base Plate, isolate posts and the rubber posts of the air unit, and screw into the fan mount. Connect the air unit and the DJI transferring port of the Integrated Base Plate with a 3-in-1 cable in the O4 package. Connect the Cooling Fan to the power out port of the Integrated Base Plate.

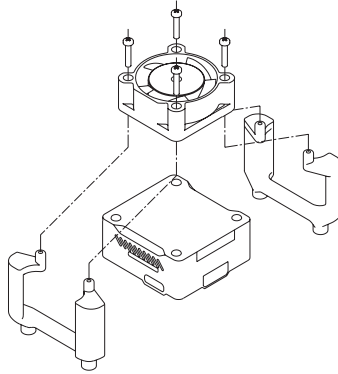


4. Fix the Antenna Mount on the Integrated Base Plate with two M2 x L6mm tapping screws, and snaps the antennas into the Antenna Mount. (Diagram refer to *Installing Gimbal and DJI O4 Pro – step 4* in this manual)

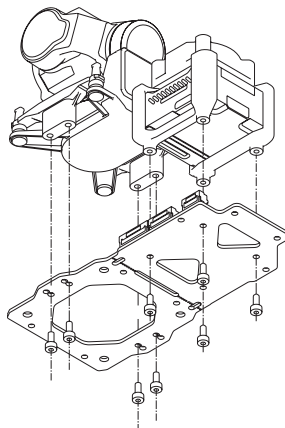
# Installation

## Installing Gimbal and DJI O3

1. Install the camera on the gimbal, and connect the coaxial cable to the air unit. Refer to *C-20T User Manual*.
2. Fix the Cooling Fan and the air unit on the O3 Air Unit Mount with four M1.7 x L10mm tapping screws.



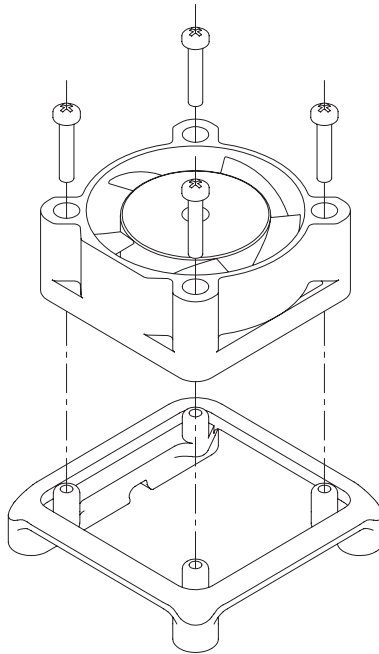
3. Fix the gimbal on the Integrated Base Plate with four M2 x L4mm machine screws. Connect the power-communication port of the gimbal and the gimbal transferring port with a Gimbal Transferring Cable. Fix the air unit on the Integrated Base Plate with four M2 x L6mm tapping screws. Connect the air unit and the DJI transferring port of the Integrated Base Plate with a 3-in-1 cable in the O3 package. Connect the Cooling Fan to the power out port of the Integrated Base Plate.



4. Fix the Antenna Mount on the Integrated Base Plate with two M2 x L6mm tapping screws, and snaps the antennas into the Antenna Mount. (Diagram refer to *Installing Gimbal and DJI O4 Pro – step 4* in this manual)

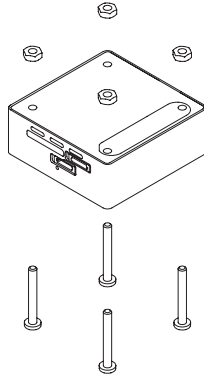
## Installing Gimbal and Walksnail Moonlight

1. Install the camera on the gimbal, and connect the coaxial cable to the air unit. Refer to *C-20T User Manual*.
2. Install the Cooling Fan on the Moonlight Fan Mount with four M1.7 x L10mm tapping screws.

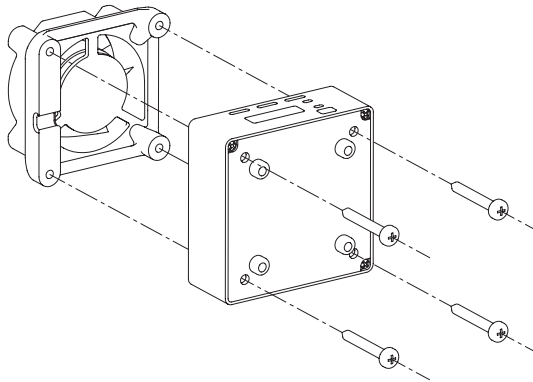




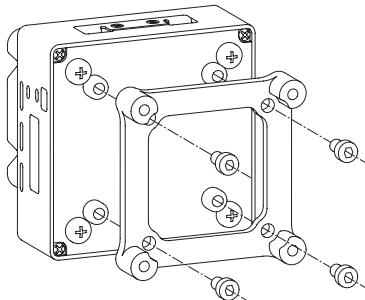
3. Remove four long screws and four nuts on the air unit.



4. Fix the Moonlight Fan Mount on the air unit with four M2 x L16mm tapping screws.



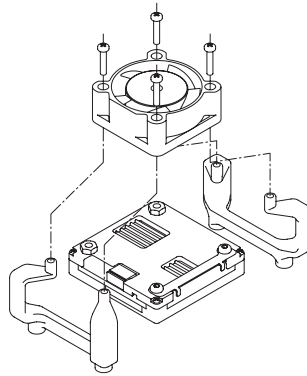
5. Fix the Moonlight Air Unit Mount on the air unit with four M2 x L4mm machine screws.



6. Fix the gimbal on the Integrated Base Plate with four M2 x L4mm machine screws. Connect the power-communication port of the gimbal and the gimbal transferring port with a Gimbal Transferring Cable.  
Fix the air unit on the Integrated Base Plate with four M2 x L6mm tapping screws. Connect the Cooling Fan to the power out port of the Integrated Base Plate. (Diagram refer to *Installing Gimbal and DJI O4 Pro – step 3* in this manual)
7. Fix the Antenna Mount on the Integrated Base Plate with two M2 x L6mm tapping screws, and snaps the antennas into the Antenna Mount. (Diagram refer to *Installing Gimbal and DJI O4 Pro – step 4* in this manual)

## Installing Gimbal and Walksnail Avatar

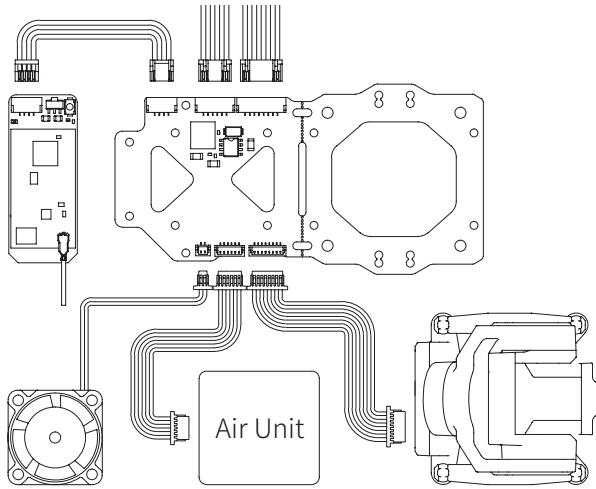
1. Install the camera on the gimbal, and connect the coaxial cable to the air unit. Refer to *C-20T User Manual*.
2. Fix the Cooling Fan and the air unit on the O3 Air Unit Mount with four M1.7 x L10mm tapping screws.



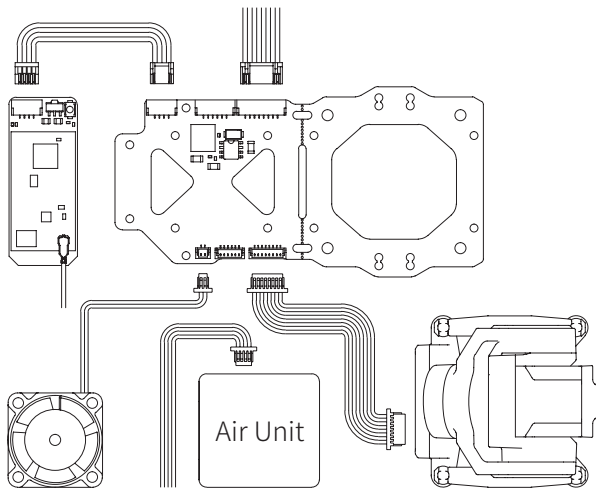
3. Fix the gimbal on the Integrated Base Plate with four M2 x L4mm machine screws. Connect the power-communication port of the gimbal and the gimbal transferring port with a Gimbal Transferring Cable.  
Fix the air unit on the Integrated Base Plate with four M2 x L6mm tapping screws. Connect the Cooling Fan to the power out port of the Integrated Base Plate. (Diagram refer to *Installing Gimbal and DJI O4 Pro – step 3* in this manual)
4. Fix the Antenna Mount on the Integrated Base Plate with two M2 x L6mm tapping screws, and snaps the antennas into the Antenna Mount. (Diagram refer to *Installing Gimbal and DJI O3 – step 4* in this manual)

# Wiring Diagram

DJI O4 Pro / DJI O4 / DJI O3 / DJI Digital FPV System / Vista Kit




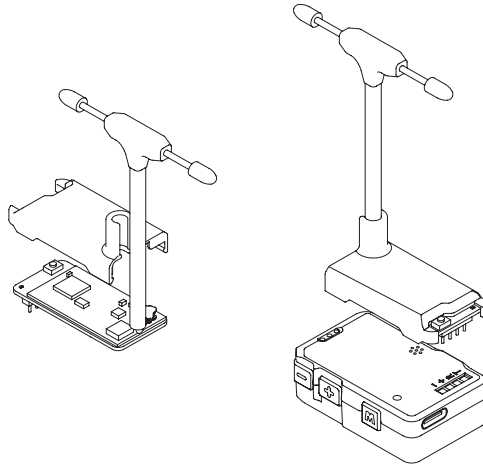
Walksnail Moonlight Kit / Walksnail Avatar Kit



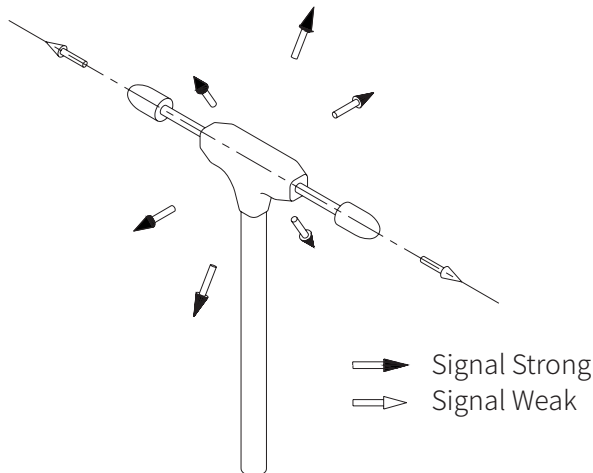
## Installing Datalink Ground Unit

Install the cover on the Datalink. Insert the pin header of the datalink module into the expansion port of the Headtracker.

 Make sure the Datalink is installed on the Headtracker following the direction shown as below. Otherwise, the equipment may be damaged and may not work properly.



## Antenna Transmission Zone



## Linking

Press and hold the linking buttons of the air unit and ground unit of the Datalink until both linking status indicators are quickly blinking, which means the datalink system is in linking status. Linking status indicators being solid on indicates linking success.

Linking status indicators slowly blinking indicates datalink system is disconnected.

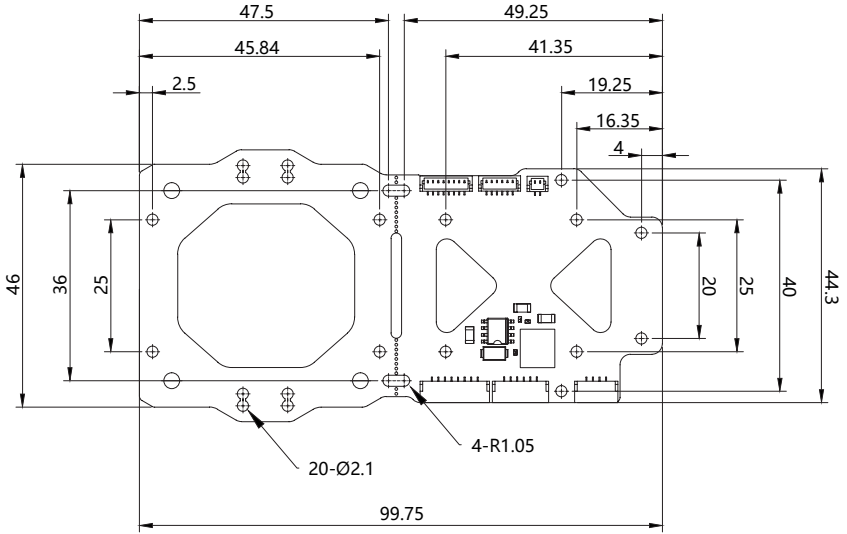


Make sure there is no other transmitting devices in the same frequency band is working around in the surrounding area.



Please re-link the datalink system if the gimbal is not able to move smoothly following the Headtracker after linking.

# Appendix 1 Dimensions



Unit: mm