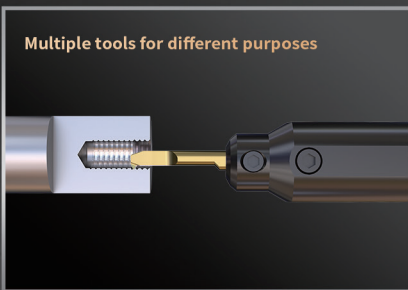
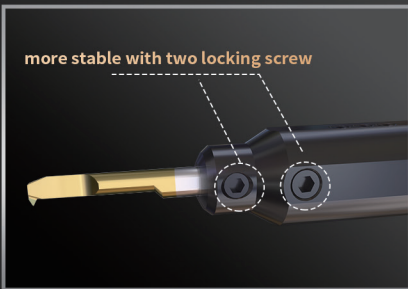
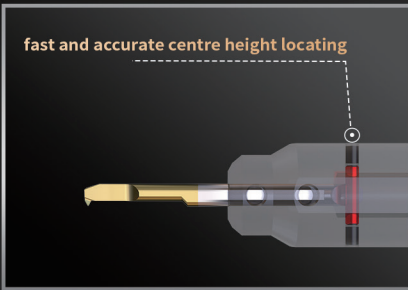


K SBT SERIES

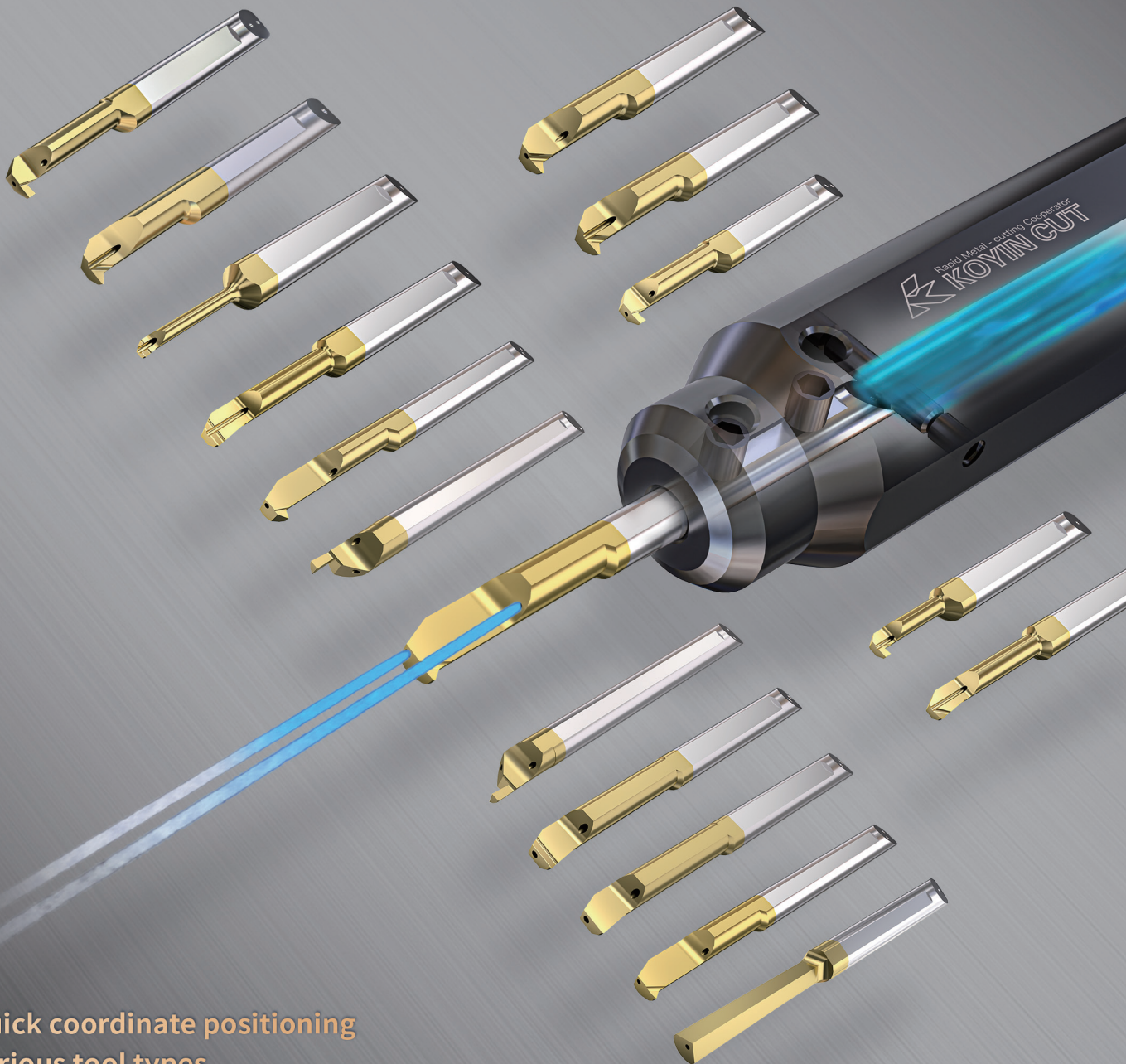
Fast locating small diameter boring tools



SBT Quick Coordinate Setting
Small Diameter Boring Tools

SBT SERIES COOLING

Quick Positioning Small Diameter Internal Coolant Boring Tools



Small Diameter Boring Tools
SBT Quick Coordinate Setting

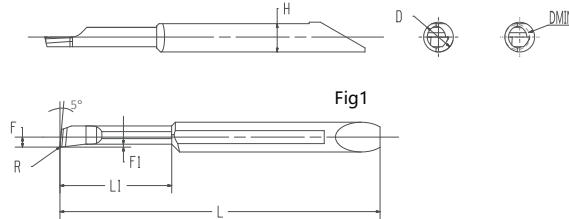
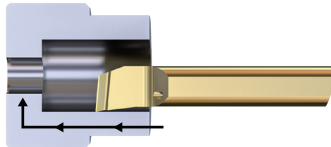
- Quick coordinate positioning
- Various tool types
- Supply of internal coolant

Symbols of SBT Boring Tools

KH: boring series	T: boring			20: boring diameter2	08: effective lenght8mm	005: R0.05		C2: double jet
	P: boring+profiling	4: shank diameter4		25: boring diameter2.5	125: effective lenght12.5mm	008: R0.08		C1: single jet
	Q: boring+profiling+big steps	6: shank diameter6		30: boring diameter3.0	15: effective lenght15mm	015: R0.15		Without: without jet
Series	Type	Shank diameter	Direction	Machinable diamter of boring	Effective lenght	Nose Radius	-	Inner cooling
KH	T	4	R	20	08	005	-	C2

Internal Processing-boring Process

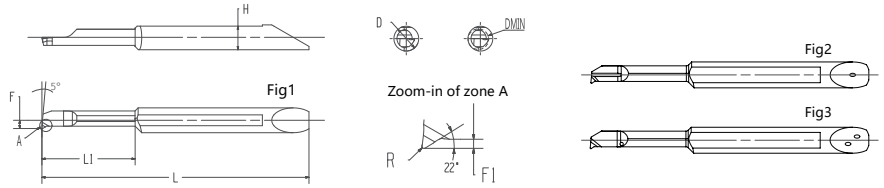
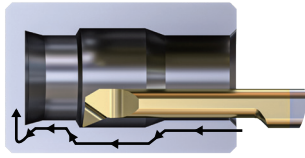
Parallel geometry
excellent hardness and sharpness
versatile



Shape	Type	Minimum boring diameter	Size(mm)								PVD Coated Cemented Carbide		Applicable holders
		DMIN	D	H	L	L1	F	F1	R	Fig	KHS10M	KXM15S	
	KHT4R 2008-010	2	4	3.6	35	8	0.85	0.25	0.1	1	●		KHP4...
	KHT4R 25125-010	2.5	4	3.6	40	12.5	1.1	0.25	0.1	1	●		KHP4...
	KHT4R 3013-010	3	4	3.6	43	13	1.35	0.35	0.1	1	●		KHP4...
	KHT4R 3013-020	3	4	3.6	43	13	1.35	0.35	0.2	1	●		KHP4...
	KHT4R 4015-010	4	4	3.6	49	15	1.86	0.4	0.1	1	●		KHP4...
	KHT4R 4015-020	4	4	3.6	49	15	1.86	0.4	0.2	1	●		KHP4...
	KHT6R 5020-010	5	6	5.6	58	20	2.35	0.5	0.1	1	●		KHP6...
	KHT6R 5020-020	5	6	5.6	58	20	2.35	0.5	0.2	1	●		KHP6...
	KHT6R 6025-010	6	6	5.6	63	25	2.85	0.6	0.1	1	●		KHP6...
	KHT6R 6025-020	6	6	5.6	63	25	2.85	0.6	0.2	1	●		KHP6...
	KHT4R 2008-010-C1	2	4	3.6	35	8	0.85	0.25	0.1	2	●		KHP4...JCT
	KHT4R 25125-010-C1	2.5	4	3.6	40	12.5	1.1	0.25	0.1	2	●		KHP4...JCT
	KHT4R 3013-010-C1	3	4	3.6	43	13	1.35	0.35	0.1	2	●		KHP4...JCT
	KHT4R 3013-020-C1	3	4	3.6	43	13	1.35	0.35	0.2	2	●		KHP4...JCT
	KHT4R 4015-010-C2	4	4	3.6	49	15	1.86	0.4	0.1	3	●		KHP4...JCT
	KHT4R 4015-020-C2	4	4	3.6	49	15	1.86	0.4	0.2	3	●		KHP4...JCT
	KHT6R 5020-010-C2	5	6	3.6	58	20	2.35	0.5	0.1	3	●		KHP6...JCT
	KHT6R 5020-020-C2	5	6	3.6	58	20	2.35	0.5	0.2	3	●		KHP6...JCT
	KHT6R 6025-010-C2	6	6	5.6	63	25	2.85	0.6	0.1	3	●		KHP6...JCT
	KHT6R 6025-020-C2	6	6	5.6	63	25	2.85	0.6	0.2	3	●		KHP6...JCT

Internal Processing-boring Process

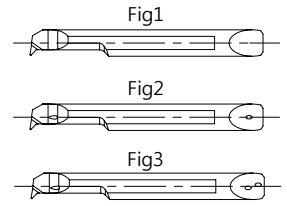
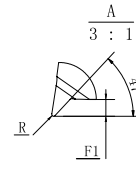
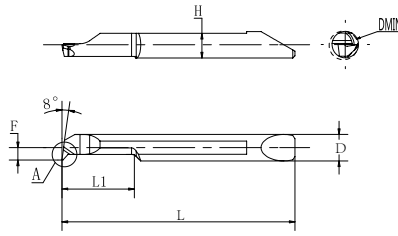
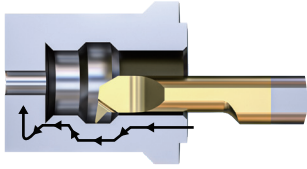
Sharp, chips evacuate frontend
sharp, chips evacuate frontend
for finishing



Shape	Type	Minimum boring diameter		Size(mm)							PVD Coated Cemented Carbide		Applicable holders
		DMIN	D	H	L	L1	F	F1	R	Fig	KHS10M	KXM15S	
	KHP4R 2008-005	2	4	3.6	35	8	0.85	0.25	0.05	1	●		KHP4 ...
	KHP4R 25125-005	2.5	4	3.6	40	12.5	1.1	0.3	0.05	1	●		KHP4 ...
	KHP4R 25125-010	2.5	4	3.6	40	12.5	1.1	0.3	0.1	1	●		KHP4 ...
	KHP4R 3013-005	3	4	3.6	43	13	1.35	0.4	0.05	1	●		KHP4 ...
	KHP4R 3013-010	3	4	3.6	43	13	1.35	0.4	0.1	1	●		KHP4 ...
	KHP4R 4015-010	4	4	3.6	49	15	1.86	0.5	0.1	1	●		KHP4 ...
	KHP4R 4015-020	4	4	3.6	49	15	1.86	0.5	0.2	1	●		KHP4 ...
	KHP6R 5020-010	5	6	5.6	58	20	2.35	0.7	0.1	1	●		KHP6 ...
	KHP6R 5020-020	5	6	5.6	58	20	2.35	0.7	0.2	1	●		KHP6 ...
	KHP6R 6025-010	6	6	5.6	63	25	2.85	0.9	0.1	1	●		KHP6 ...
	KHP6R 6025-020	6	6	5.6	63	25	2.85	0.9	0.2	1	●		KHP6 ...
	KHP4R 2008-005-C1	2	4	3.6	35	8	0.85	0.25	0.05	2	●		KHP4 ...JCT
	KHP4R 25125-005-C1	2.5	4	3.6	40	12.5	1.1	0.3	0.05	2	●		KHP4 ...JCT
	KHP4R 25125-010-C1	2.5	4	3.6	40	12.5	1.1	0.3	0.1	2	●		KHP4 ...JCT
	KHP4R 3013-005-C1	3	4	3.6	43	13	1.35	0.4	0.05	2	●		KHP4 ...JCT
	KHP4R 3013-010-C1	3	4	3.6	43	13	1.35	0.4	0.1	2	●		KHP4 ...JCT
	KHP4R 4015-010-C2	4	4	3.6	49	15	1.86	0.5	0.1	3	●		KHP4 ...JCT
	KHP4R 4015-020-C2	4	4	3.6	49	15	1.86	0.5	0.2	3	●		KHP4 ...JCT
	KHP6R 5020-010-C2	5	6	5.6	58	20	2.35	0.7	0.1	3	●		KHP6 ...JCT
	KHP6R 5020-020-C2	5	6	5.6	58	20	2.35	0.7	0.2	3	●		KHP6 ...JCT
KHP6R 6025-010-C2	6	6	5.6	63	25	2.85	0.9	0.1	3	●		KHP6 ...JCT	
KHP6R 6025-020-C2	6	6	5.6	63	25	2.85	0.9	0.2	3	●		KHP6 ...JCT	

Small Diameter Boring Tools
Start Quick Coordinate Setting

Internal Processing-boring Process

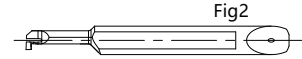
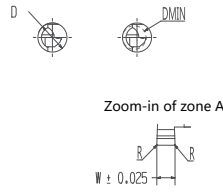
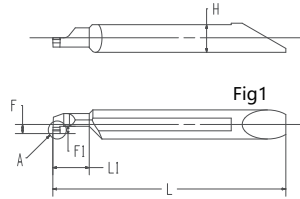
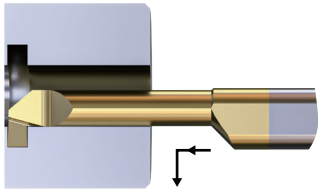


Shape	Type	Minimum boring diameter	Size(mm)								PVD Coated Cemented Carbide		Applicable holders
		DMIN	D	H	L	L1	F	F1	R	Fig	KHS10M	KXM15S	
	KHQ4R 3013-010	3	4	3.6	43	13	1.3	0.6	0.1	1	●		KHP4 ...
	KHQ4R 4015-010	4	4	3.6	49	15	1.8	0.8	0.1	1	●		KHP4 ...
	KHQ4R 4015-020	4	4	3.6	49	15	1.8	0.8	0.2	1	●		KHP4 ...
	KHQ6R 5020-020	5	6	5.6	58	20	2.3	1	0.2	1	●		KHP6 ...
	KHQ6R 6025-020	6	6	5.6	63	25	2.8	1.4	0.2	1	●		KHP6 ...
	KHQ4R 3013-010-C1	3	4	3.6	43	13	1.3	0.6	0.1	2	●		KHP4 ... JCT
	KHQ4R 4015-010-C2	4	4	3.6	49	15	1.8	0.8	0.1	3	●		KHP4 ... JCT
	KHQ4R 4015-020-C2	4	4	3.6	49	15	1.8	0.8	0.2	3	●		KHP4 ... JCT
	KHQ6R 5020-020-C2	5	6	5.6	58	20	2.3	1	0.2	3	●		KHP6 ... JCT
	KHQ6R 6025-020-C2	6	6	5.6	63	25	2.8	1.4	0.2	3	●		KHP6 ... JCT

Symbols of Inner Grooving Tools

KH: boring series	G: Grooving tools	4: shank diameter4	30: boring diameter3.0	05: width0.5	-	050: groove depth0.5	-	C2: double jet	
		6: shank diameter6	40: boring diameter4.0	075: width0.75		100: groove depth1.0		C1: single jet	
			50: boring diameter5.0	10: width1.0		120: groove depth1.2		Without: without jet	
Series	Type	Shank diameter	Direction	Machinable diameter of boring	Tip width		Machinable groove depth		Inner cooling
KH	G	4	R	30	075	-	080	-	C2

Internal Processing-grooving Process



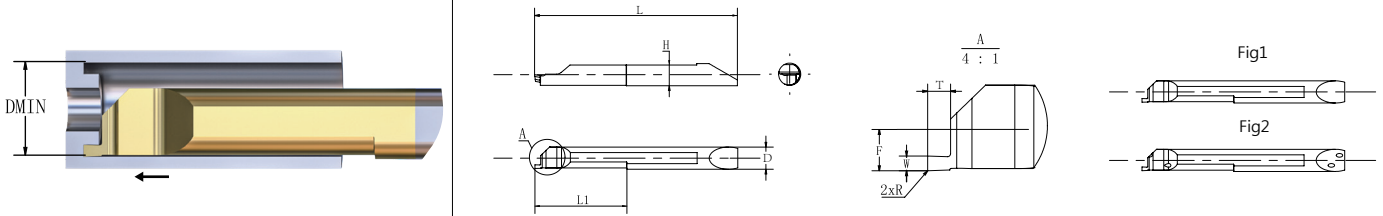
Shape	Type	Minimum boring diameter	Size(mm)									PVD Coated Cemented Carbide		Applicable holders
			DMIN	W	R	D	H	L	L1	F	F1	Fig	KHS10M	
	KHG4R 3005-050	3	0.5	0.05	4	3.6	37	9	1.3	0.5	1	●		KHP4...
	KHG4R 30075-060	3	0.75	0.05	4	3.6	37	9	1.3	0.6	1	●		KHP4...
	KHG4R 3010-070	3	1	0.05	4	3.6	37	9	1.3	0.7	1	●		KHP4...
	KHG4R 4005-050	4	0.5	0.05	4	3.6	40	10	1.75	0.5	1	●		KHP4...
	KHG4R 40075-060	4	0.75	0.05	4	3.6	40	10	1.75	0.6	1	●		KHP4...
	KHG4R 4010-100	4	1	0.05	4	3.6	40	10	1.75	1	1	●		KHP4...
	KHG4R 4015-100	4	1.5	0.05	4	3.6	40	10	1.75	1	1	●		KHP4...
	KHG4R 4020-100	4	2	0.05	4	3.6	40	10	1.75	1	1	●		KHP4...
	KHG6R 50075-120	5	0.75	0.05	6	5.6	53	15	2.35	1.2	1	●		KHP6...
	KHG6R 5010-120	5	1	0.05	6	5.6	53	15	2.35	1.2	1	●		KHP6...
	KHG6R 5015-120	5	1.5	0.05	6	5.6	53	15	2.35	1.2	1	●		KHP6...
	KHG6R 5020-120	5	2	0.05	6	5.6	53	15	2.35	1.2	1	●		KHP6...
	KHG6R 6010-180	6	1	0.05	6	5.6	53	15	2.85	1.8	1	●		KHP6...
	KHG6R 6015-180	6	1.5	0.05	6	5.6	53	15	2.85	1.8	1	●		KHP6...
	KHG6R 6020-180	6	2	0.05	6	5.6	53	15	2.85	1.8	1	●		KHP6...
	KHG4R 3005-050-C1	3	0.5	0.05	4	3.6	37	9	1.3	0.5	2	●		KHP4...JCT
	KHG4R 30075-060-C1	3	0.75	0.05	4	3.6	37	9	1.3	0.6	2	●		KHP4...JCT
	KHG4R 3010-070-C1	3	1	0.05	4	3.6	37	9	1.3	0.7	2	●		KHP4...JCT
	KHG4R 4005-050-C2	4	0.5	0.05	4	3.6	40	10	1.75	0.5	3	●		KHP4...JCT
	KHG4R 40075-060-C2	4	0.75	0.05	4	3.6	40	10	1.75	0.6	3	●		KHP4...JCT
	KHG4R 4010-100-C2	4	1	0.05	4	3.6	40	10	1.75	1	3	●		KHP4...JCT
	KHG4R 4015-100-C2	4	1.5	0.05	4	3.6	40	10	1.75	1	3	●		KHP4...JCT
	KHG4R 4020-100-C2	4	2	0.05	4	3.6	40	10	1.75	1	3	●		KHP4...JCT
	KHG6R 50075-120-C2	5	0.75	0.05	6	5.6	53	15	2.35	1.2	3	●		KHP6...JCT
	KHG6R 5010-120-C2	5	1	0.05	6	5.6	53	15	2.35	1.2	3	●		KHP6...JCT
	KHG6R 5015-120-C2	5	1.5	0.05	6	5.6	53	15	2.35	1.2	3	●		KHP6...JCT
	KHG6R 5020-120-C2	5	2	0.05	6	5.6	53	15	2.35	1.2	3	●		KHP6...JCT
	KHG6R 6010-180-C2	6	1	0.05	6	5.6	53	15	2.85	1.8	3	●		KHP6...JCT
KHG6R 6015-180-C2	6	1.5	0.05	6	5.6	53	15	2.85	1.8	3	●		KHP6...JCT	
KHG6R 6020-180-C2	6	2	0.05	6	5.6	53	15	2.85	1.8	3	●		KHP6...JCT	

Small Diameter Boring Tools
Start Quick Coordinate Setting

Symbols of SBT Endface Grooving Tools

KH: boring series	F: Endface Groove	4: shank diameter4	R: right handed	50: boring diameter5.0	05: width0.5	-	120: groove depth1.2	-	C2: double jet
		6: shank diameter6	L: left handed	60: boring diameter6.0	075: width0.75		150: groove depth1.5		Without: without jet
		Series	Type	Shank diameter	Direction		Machinable diameter of boring		Tip width
KH	F	4	R	50	10	-	120	-	C2

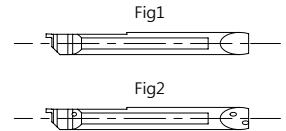
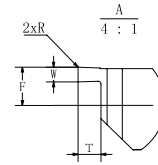
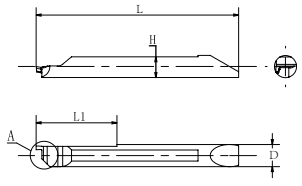
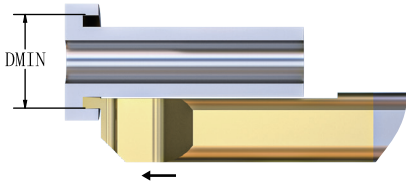
Internal Machining-Endface Grooving



shape	Type	Minimum boring diameter	Size(mm)									PVD Coated Cemented Carbide		Applicable holders
		DMIN	W	R	D	H	L	L1	F	T	Fig	KHS10M	KXM15S	
	KHF4R 5005-120	5	0.5	0.05	4	3.6	43	15	1.95	1.2	1	●		KHP4...
	KHF4R 50075-150	5	0.75	0.1	4	3.6	43	15	1.95	1.5	1	●		KHP4...
	KHF4R 5010-150	5	1	0.1	4	3.6	43	15	1.95	1.5	1	●		KHP4...
	KHF4R 5015-280	5	1.5	0.1	4	3.6	43	15	1.95	2.8	1	●		KHP4...
	KHF4R 5005-120-C2	5	0.5	0.05	4	3.6	43	15	1.95	1.2	2	●		KHP4...JCT
	KHF4R 50075-150-C2	5	0.75	0.1	4	3.6	43	15	1.95	1.5	2	●		KHP4...JCT
	KHF4R 5010-150-C2	5	1	0.1	4	3.6	43	15	1.95	1.5	2	●		KHP4...JCT
	KHF4R 5015-280-C2	5	1.5	0.1	4	3.6	43	15	1.95	2.8	2	●		KHP4...JCT
	KHF6R 6005-120	6	0.5	0.05	6	5.6	55	22	2.8	1.2	1	●		KHP6...
	KHF6R 60075-150	6	0.75	0.1	6	5.6	55	22	2.8	1.5	1	●		KHP6...
	KHF6R 6010-150	6	1	0.1	6	5.6	55	22	2.8	1.5	1	●		KHP6...
	KHF6R 6015-250	6	1.5	0.1	6	5.6	55	22	2.8	2.5	1	●		KHP6...
	KHF6R 6020-400	6	2	0.1	6	5.6	55	22	2.8	4.0	1	●		KHP6...
	KHF6R 6005-120-C2	6	0.5	0.05	6	5.6	55	22	2.8	1.2	2	●		KHP6...JCT
	KHF6R 60075-150-C2	6	0.75	0.1	6	5.6	55	22	2.8	1.5	2	●		KHP6...JCT
	KHF6R 6010-150-C2	6	1	0.1	6	5.6	55	22	2.8	1.5	2	●		KHP6...JCT
	KHF6R 6015-250-C2	6	1.5	0.1	6	5.6	55	22	2.8	2.5	2	●		KHP6...JCT
	KHF6R 6020-400-C2	6	2	0.1	6	5.6	55	22	2.8	4.0	2	●		KHP6...JCT
	KHF6R 8010-200	8	1	0.1	6	5.6	55	22	2.95	2	1	●		KHP6...
	KHF6R 8015-300	8	1.5	0.1	6	5.6	55	22	2.95	3	1	●		KHP6...
	KHF6R 8020-400	8	2	0.1	6	5.6	55	22	2.95	4	1	●		KHP6...
	KHF6R 8025-500	8	2.5	0.1	6	5.6	55	22	2.95	5	1	●		KHP6...
	KHF6R 8030-600	8	3	0.1	6	5.6	55	22	2.95	6	1	●		KHP6...
	KHF6R 8010-200-C2	8	1	0.1	6	5.6	55	22	2.95	2	2	●		KHP6...JCT
KHF6R 8015-300-C2	8	1.5	0.1	6	5.6	55	22	2.95	3	2	●		KHP6...JCT	
KHF6R 8020-400-C2	8	2	0.1	6	5.6	55	22	2.95	4	2	●		KHP6...JCT	
KHF6R 8025-500-C2	8	2.5	0.1	6	5.6	55	22	2.95	5	2	●		KHP6...JCT	
KHF6R 8030-600-C2	8	3	0.1	6	5.6	55	22	2.95	6	2	●		KHP6...JCT	
KHF8R 1015-300	10	1.5	0.2	8	7.6	53	22	3.95	3	1	●		KHP8...	
KHF8R 1020-400	10	2	0.2	8	7.6	53	22	3.95	4	1	●		KHP8...	
KHF8R 1025-500	10	2.5	0.2	8	7.6	53	22	3.95	5	1	●		KHP8...	
KHF8R 1030-600	10	3	0.2	8	7.6	53	22	3.95	6	1	●		KHP8...	
KHF8R 1015-300-C2	10	1.5	0.2	8	7.6	53	22	3.95	3	2	●		KHP8...JCT	
KHF8R 1020-400-C2	10	2	0.2	8	7.6	53	22	3.95	4	2	●		KHP8...JCT	
KHF8R 1025-500-C2	10	2.5	0.2	8	7.6	53	22	3.95	5	2	●		KHP8...JCT	
KHF8R 1030-600-C2	10	3	0.2	8	7.6	53	22	3.95	6	2	●		KHP8...JCT	

SBT Quick Coordinate Setting Small Diameter Boring Tools

Internal Machining-Endface Grooving



Shape	Type	Minimum boring diameter	Size(mm)									PVD Coated Cemented Carbide		Applicable holders
		DMIN	W	R	D	H	L	L1	F	T	Fig	KHS10M	KXM15S	
	KHF4L 5005-120	5	0.5	0.05	4	3.6	43	15	1.75	1.2	1	●		KHP4...
	KHF4L 50075-150	5	0.75	0.1	4	3.6	43	15	1.75	1.5	1	●		KHP4...
	KHF4L 5010-150	5	1	0.1	4	3.6	43	15	1.75	1.5	1	●		KHP4...
	KHF4L 5015-280	5	1.5	0.1	4	3.6	43	15	1.75	2.8	1	●		KHP4...
	KHF4L 5005-120-C2	5	0.5	0.05	4	3.6	43	15	1.75	1.2	2	●		KHP4...JCT
	KHF4L 50075-150-C2	5	0.75	0.1	4	3.6	43	15	1.75	1.5	2	●		KHP4...JCT
	KHF4L 5010-150-C2	5	1	0.1	4	3.6	43	15	1.75	1.5	2	●		KHP4...JCT
	KHF4L 5015-280-C2	5	1.5	0.1	4	3.6	43	15	1.75	2.8	2	●		KHP4...JCT
	KHF6L 6005-120	6	0.5	0.05	6	5.6	55	22	2.6	1.2	1	●		KHP6...
	KHF6L 60075-150	6	0.75	0.1	6	5.6	55	22	2.6	1.5	1	●		KHP6...
	KHF6L 6010-150	6	1	0.1	6	5.6	55	22	2.6	1.5	1	●		KHP6...
	KHF6L 6015-250	6	1.5	0.1	6	5.6	55	22	2.6	2.5	1	●		KHP6...
	KHF6L 6020-400	6	2	0.1	6	5.6	55	22	2.6	4.0	1	●		KHP6...
	KHF6L 6005-120-C2	6	0.5	0.05	6	5.6	55	22	2.6	1.2	2	●		KHP6...JCT
	KHF6L 60075-150-C2	6	0.75	0.1	6	5.6	55	22	2.6	1.5	2	●		KHP6...JCT
	KHF6L 6010-150-C2	6	1	0.1	6	5.6	55	22	2.6	1.5	2	●		KHP6...JCT
	KHF6L 6015-250-C2	6	1.5	0.1	6	5.6	55	22	2.6	2.5	2	●		KHP6...JCT
	KHF6L 6020-400-C2	6	2	0.1	6	5.6	55	22	2.6	4.0	2	●		KHP6...JCT
	KHF6L 8010-200	8	1	0.1	6	5.6	55	22	2.75	2	1	●		KHP6...
	KHF6L 8015-300	8	1.5	0.1	6	5.6	55	22	2.75	3	1	●		KHP6...
	KHF6L 8020-400	8	2	0.1	6	5.6	55	22	2.75	4	1	●		KHP6...
	KHF6L 8025-500	8	2.5	0.1	6	5.6	55	22	2.75	5	1	●		KHP6...
	KHF6L 8030-600	8	3	0.1	6	5.6	55	22	2.75	6	1	●		KHP6...
	KHF6L 8010-200-C2	8	1	0.1	6	5.6	55	22	2.75	2	2	●		KHP6...JCT
	KHF6L 8015-300-C2	8	1.5	0.1	6	5.6	55	22	2.75	3	2	●		KHP6...JCT
	KHF6L 8020-400-C2	8	2	0.1	6	5.6	55	22	2.75	4	2	●		KHP6...JCT
	KHF6L 8025-500-C2	8	2.5	0.1	6	5.6	55	22	2.75	5	2	●		KHP6...JCT
	KHF6L 8030-600-C2	8	3	0.1	6	5.6	55	22	2.75	6	2	●		KHP6...JCT
	KHF8L 1015-300	10	1.5	0.2	8	7.6	53	22	3.75	3	1	●		KHP8...
	KHF8L 1020-400	10	2	0.2	8	7.6	53	22	3.75	4	1	●		KHP8...
	KHF8L 1025-500	10	2.5	0.2	8	7.6	53	22	3.75	5	1	●		KHP8...
	KHF8L 1030-600	10	3	0.2	8	7.6	53	22	3.75	6	1	●		KHP8...
	KHF8L 1015-300-C2	10	1.5	0.2	8	7.6	53	22	3.75	3	2	●		KHP8...JCT
	KHF8L 1020-400-C2	10	2	0.2	8	7.6	53	22	3.75	4	2	●		KHP8...JCT
	KHF8L 1025-500-C2	10	2.5	0.2	8	7.6	53	22	3.75	5	2	●		KHP8...JCT
	KHF8L 1030-600-C2	10	3	0.2	8	7.6	53	22	3.75	6	2	●		KHP8...JCT

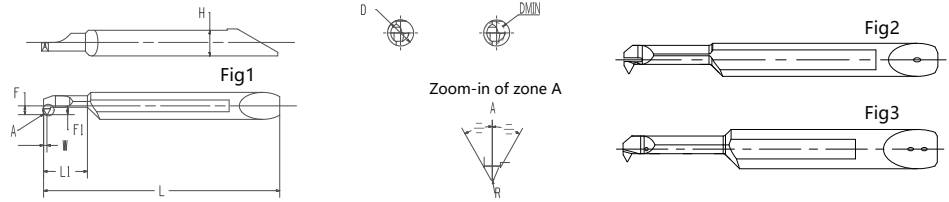
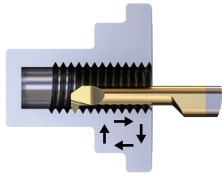


Small Diameter Boring Tools
Set Quick Coordinate Setting

Symbols of SBT Threading Tools

KH: boring series	I: Threading Tools	4: shank diameter4		30: boring diameter3					C2: double jet
		6: shank diameter6		40: boring diameter4.0	003: R0.03				C1: single jet
				50: boring diameter5.0	005: R0.05		60A: 60°		Without: without jet
Series	Type	Shank diameter	Direction	Machinable diameter of boring	Nose Radius	-	Thread Angle	-	Inner cooling
KH	I	4	R	30	003	-	60A	-	C2

Internal Processing- threading Process



Shape	Type	Minimum boring diameter	Size(mm)										Metric thread		Imperial Thread		PVD Coated Cemented Carbide		Applicable holders
			D _{MIN}	D	H	L	L1	F	F1	W	R	Fig	A	Specifications of thread	Pitch (mm)	Specifications of thread	Pitch (teeth per inch)	KH510M	
	KHI4R 30003-60A	3	4	3.6	34	6.5	1.19	1	0.5	0.03Max	1	60°	M4 and above (treading M3.5 and above)	0.35-0.8	No.8-32UNC No.8-36UNF and above	36-32	●		KHP4 ...
	KHI4R 35003-60A	3.5	4	3.6	36	8.5	1.44	1.2	0.6	0.03Max	1	60°	M4.5 and above (treading M4.5 and above)	0.5-1.0	No.10-24UNC No.8-36UNF and above	36-24	●		KHP4 ...
	KHI4R 40005-60A	4	4	3.6	38	10.5	1.69	1.2	0.6	0.05Max	1	60°	M5 and above (treading M6 and above)	0.75-1.25	No.12-24UNC No.12-28UNF and above	28-20	●		KHP4 ...
	KHI6R 50005-60A	5	6	5.6	48	15.5	1.94	1.3	0.65	0.05Max	1	60°	M7 and above (treading M6 and above)	0.75-1.5	1/4-20UNC 1/4-28UNF and above	28-18	●		KHP6 ...
	KHI6R 60005-60A	6	6	5.6	53	19.5	2.44	1.6	0.8	0.05Max	1	60°	M8 and above (treading M7 and above)	0.75-1.5	5/16-18UNC 5/16-24UNF and above	24-16	●		KHP6 ...
	KHI4R 40005-60A-C1	4	4	3.6	38	10.5	1.69	1.2	0.6	0.05Max	2	60°	M5 and above (treading M6 and above)	0.75-1.25	No.12-24UNC No.12-28UNF and above	28-20	●		KHP4 ...JCT
	KHI6R 50005-60A-C2	5	6	5.6	48	15.5	1.94	1.3	0.65	0.05Max	3	60°	M7 and above (treading M6 and above)	0.75-1.5	1/4-20UNC 1/4-28UNF and above	28-18	●		KHP6 ...JCT
	KHI6R 60005-60A-C2	6	6	5.6	53	19.5	2.44	1.6	0.8	0.05Max	3	60°	M8 and above (treading M7 and above)	0.75-1.5	5/16-18UNC 5/16-24UNF and above	24-16	●		KHP6 ...JCT

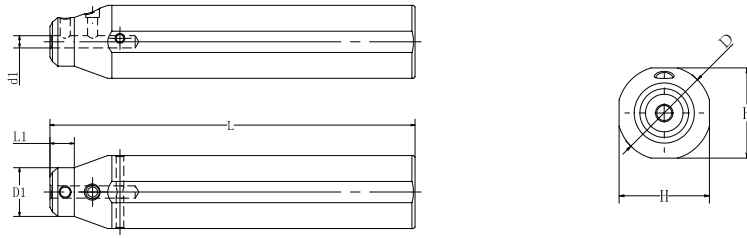
Symbols of SBT Tool Holders


KH: boring series	P: Tool holders	4: shank diameter4		16: shank diameter16															
		6: shank diameter6		1905: shank diameter19.05															
		8: shank diameter8		20: shank diameter20															
				22: shank diameter22										90: Length90					
				25: shank diameter25										100: Length100					Without: without jet
				254: shank diameter25.4										120: Length120					JCT: inner cooling
Series	Tool holders	Tool diameter	-	Shank diameter	-	Tool Length	-	Inner cooling											
KH	P	4	-	20	-	100	-	JCT											

Accessories

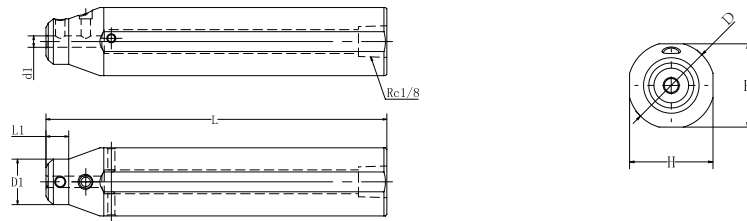
Symbols of tool holders	lock screw (for insert)	Wrench	lock screw (for pin)	Wrench	locating pin
KHP□-16□□□□	KS-4004-SH	KW-LH2	KS-3002-SH	KW-LH1.5	KLP-2511
KHP□-1905□□□□	KS-4004-SH	KW-LH2	KS-3003-SH	KW-LH1.5	KLP-2511
KHP□-20□□□□	KS-4004-SH	KW-LH2	KS-3003-SH	KW-LH1.5	KLP-2511
KHP□-22□□□□	KS-4004-SH	KW-LH2	KS-3003-SH	KW-LH1.5	KLP-2514
KHP□-25□□□□	KS-4004-SH	KW-LH2	KS-3003-SH	KW-LH1.5	KLP-2514
KHP□-254□□□□	KS-4004-SH	KW-LH2	KS-3003-SH	KW-LH1.5	KLP-2514


Internal Processing-tool Holders



Shape	Type	Stock	Size(mm)						Corresponding Insert
			D	D1	d1	L	L1	H	
	KHP4-16-90		16	13	4	90	8	15	KH□4%□□□
	KHP4-1905-100		19.05	14	4	100	8	18	KH□4%□□□
	KHP4-20-100		20	15	4	100	8	19	KH□4%□□□
	KHP4-22-120		22	17	4	120	8	21	KH□4%□□□
	KHP4-25-120		25	20	4	120	8	24	KH□4%□□□
	KHP4-254-120		25.4	20.4	4	120	8	24.4	KH□4%□□□
	KHP6-16-90		16	13	6	90	8	15	KH□6%□□□
	KHP6-1905-100		19.05	14	6	100	8	18	KH□6%□□□
	KHP6-20-100		20	15	6	100	8	19	KH□6%□□□
	KHP6-22-120		22	17	6	120	8	21	KH□6%□□□
	KHP6-25-120		25	20	6	120	8	24	KH□6%□□□
	KHP6-254-120		25.4	20.4	6	120	8	24.4	KH□6%□□□
	KHP8-1905-100		19.05	15	8	100	8	18	KH□8%□□□
	KHP8-20-100		20	15	8	100	8	19	KH□8%□□□
	KHP8-22-120		22	17	8	120	8	21	KH□8%□□□
	KHP8-25-120		25	20	8	120	8	24	KH□8%□□□
KHP8-254-120		25.4	20.4	8	120	8	24.4	KH□8%□□□	

Internal Processing-holders With Jet



Shape	Type	Stock	Size(mm)						Corresponding Insert
			D	D1	d1	L	L1	H	
	KHP4-16-90-JCT		16	13	4	90	8	15	KH□4%□□□
	KHP4-1905-100-JCT		19.05	14	4	100	8	18	KH□4%□□□
	KHP4-20-100-JCT		20	15	4	100	8	19	KH□4%□□□
	KHP4-22-120-JCT		22	17	4	120	8	21	KH□4%□□□
	KHP4-25-120-JCT		25	20	4	120	8	24	KH□4%□□□
	KHP4-254-120-JCT		25.4	20.4	4	120	8	24.4	KH□4%□□□
	KHP6-16-90-JCT		16	13	6	90	8	15	KH□6%□□□
	KHP6-1905-100-JCT		19.05	14	6	100	8	18	KH□6%□□□
	KHP6-20-100-JCT		20	15	6	100	8	19	KH□6%□□□
	KHP6-22-120-JCT		22	17	6	120	8	21	KH□6%□□□
	KHP6-25-120-JCT		25	20	6	120	8	24	KH□6%□□□
	KHP6-254-120-JCT		25.4	20.4	6	120	8	24.4	KH□6%□□□
	KHP8-1905-100-JCT		19.05	15	8	100	8	18	KH□8%□□□
	KHP8-20-100-JCT		20	15	8	100	8	19	KH□8%□□□
	KHP8-22-120-JCT		22	17	8	120	8	21	KH□8%□□□
	KHP8-25-120-JCT		25	20	8	120	8	24	KH□8%□□□
KHP8-254-120-JCT		25.4	20.4	8	120	8	24.4	KH□8%□□□	

SBT Quick Coordinate Setting Small Diameter Boring Tools

Recommend Parameters For Machining

SBT Small Diameter Boring Tools								
	VC (m/min)							
	Symbols of Grades							
	KPM30N	KCP10P	KXM15S	KMS15C	KHS10M	KMS20	KCN10D (DLC Coating)	KCN10 (Carbide without Coating)
P Steel	50-150	50-160	50-150	50-150	50-130			
M Stainless Steel			40-100	40-100	40-80	40-120		
K Cast Iron					50-150			
S Heat Resisting Alloy			30-60	30-60		30-80		
H High-hardness steel					30-60			
N Nonferrous metal							120-250	100-180

Tool Type						
Parameters	KHT Boring Tool	KHP Boring Tool	KHQ Boring Tool	KHG Boring Tool	KHF Boring Tool	KHI Boring Tool
Processing volume ap Ap (mm)	0.01-0.2	0.01-0.2	0.01-0.2			0.015-0.05
Feeding Speed f (mm/rev)	0.02-0.1	0.02-0.1	0.02-0.1	0.02-0.05	0.02-0.05	