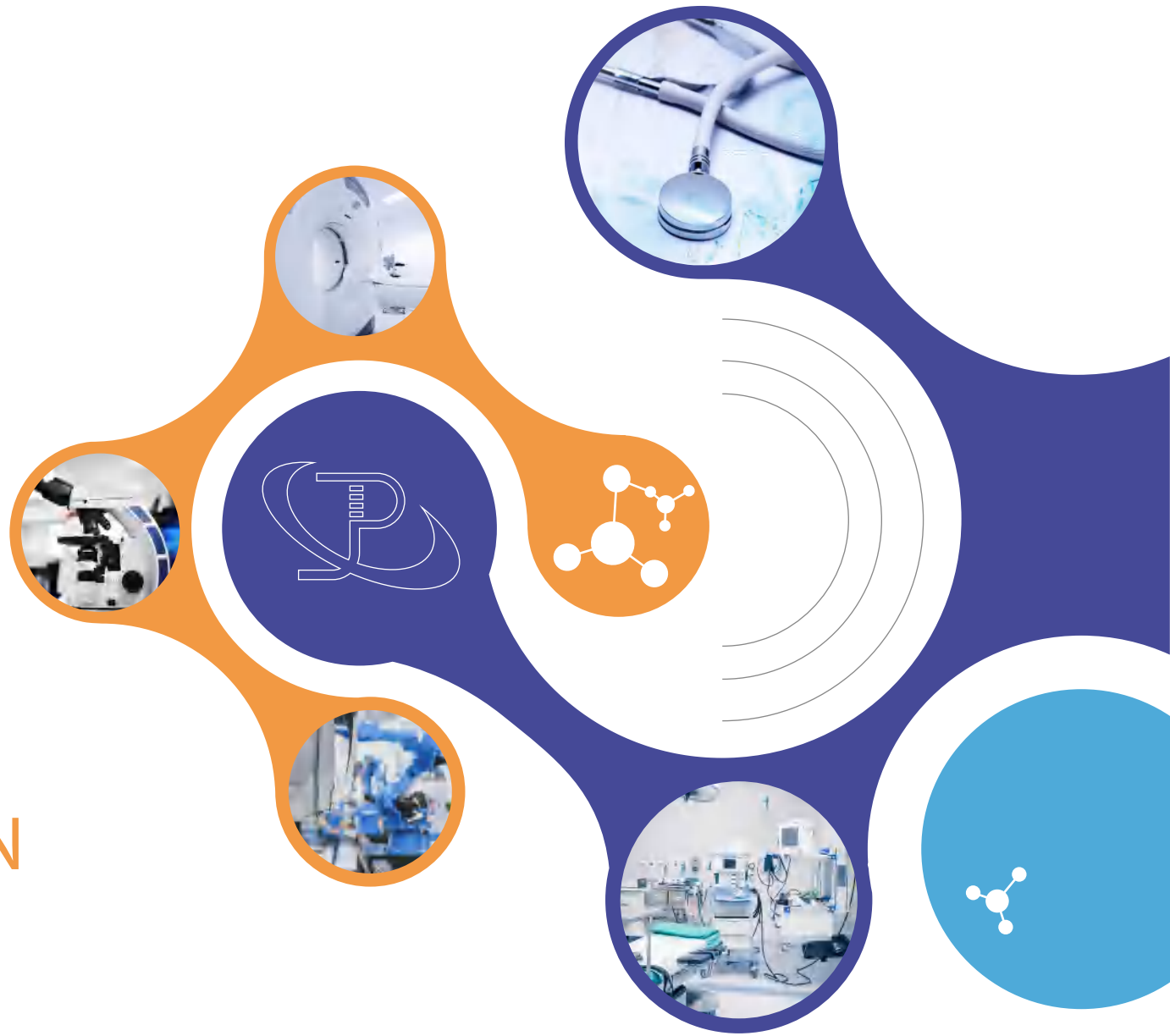




Since 1996

JINPAT SLIP  
RING APPLICATION

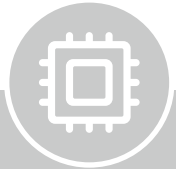
MEDICAL



# Technical Capacity



## Electric



Max.500 circuits



Max.4200A



Max 10,000V



### Advantage

USB3.0,10G Ethernet, HDMI, SDI, ProfiNet, Powerlink, SercosIII, EtherCAT, Encoder, EtherNet/IP...

## Environment



Max.IP68



Air 7.5kPa(18000m)  
Underwater 4000m



Exd IIB T4 GB



Accelerate 18000g



-55 °C ~+250 °C

## Structure



Max.30,000rpm



370million revolutions  
2.3@2000rpm



Torque  
Min. 0.02 N.m



ID Max. 1m



### Advantage

Integration :  
power+liquid+HF+FO

# Typical Application



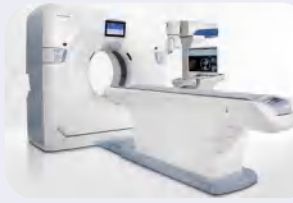
Surgical Lamp



Cardiovascular  
Detector



Surgical Robot



CT Machine



Biochemical Analyzer



Immune Analyzer



Nucleic Acid Extraction  
and Purification



Animal Activity  
Recorder



Rehabilitation  
Training Robot



Pharmaceutical  
Filling Machine



knee Joint Prosthesis

JINPAT Electronics

# Surgical Lamp



## SOLUTIONS

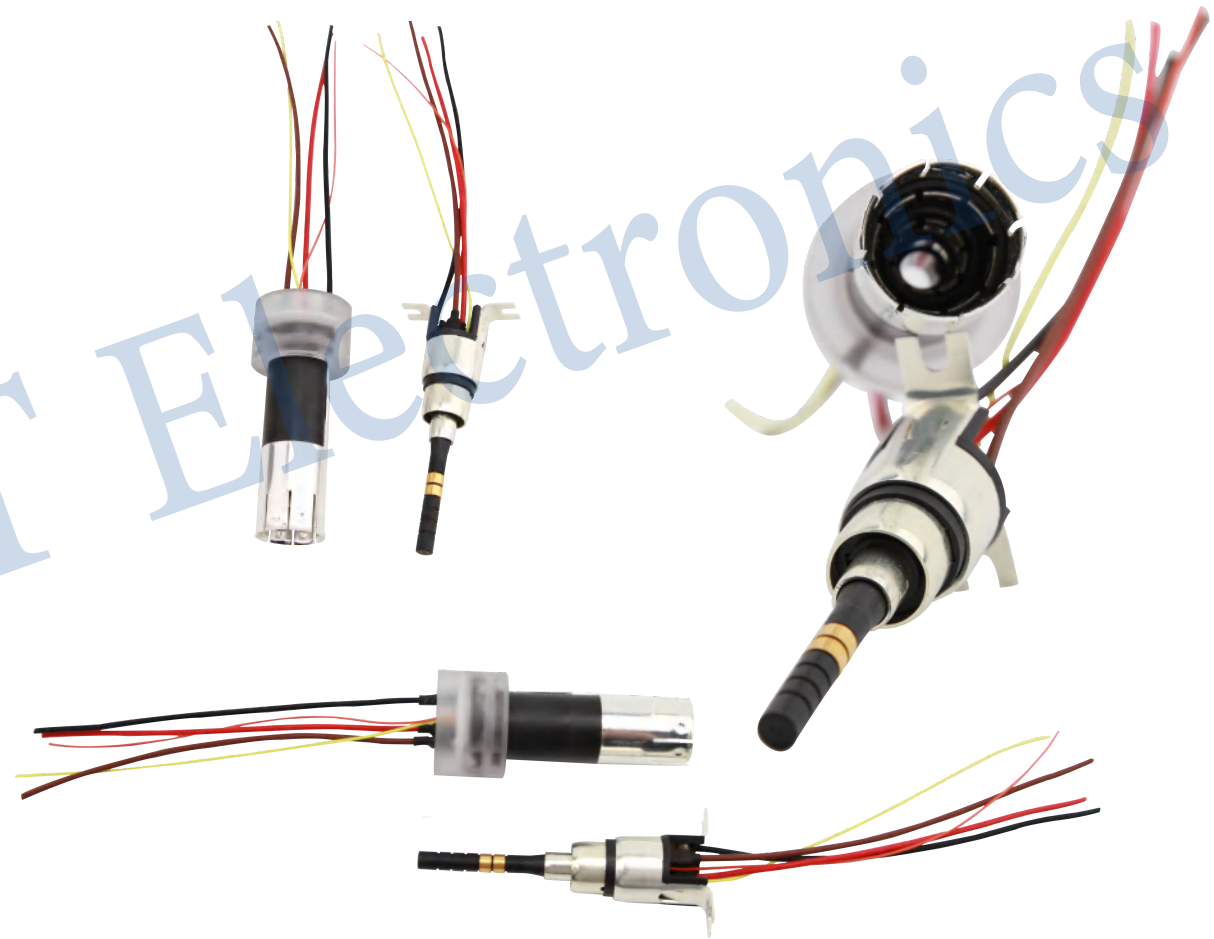
- SR-3P-B/C/M/F Plug-in Slip Ring
- LPC-03P Medium Capsule Slip Ring

## TECHNICAL FEATURES

3 circuits 11A+6 signals (higher)

Long lifespan, up to 200000 times of plugging

It can transmit high-speed data signals, HD-SDI, control signals, etc., and is suitable for small installation space



# Cardiovascular Detector Slip Ring



**JINPAT**

*Since 1996*

## SOLUTIONS

- LPC-1F0203 medium capsule slip ring
- 2 circuits 3A integrated, 1 circuit optical

## TECHNICAL FEATURES

Photoelectric integrated power slip ring,  
6000rpm, 65,000,000 revolutions for lifespan,  
mechanical noise within  $0.5M \leq 69db$





# Surgical Robot Slip Ring



**JINPAT**

## SOLUTIONS

- LPC-12T medium capsule slip ring with through hole
- LPC-36A medium capsule slip ring

## TECHNICAL FEATURES

It can customize the requirements of high protection, high speed and long lifespan;  
It can integrated multiple signals (such as analog signals, digital signals, etc.), with smooth operation, small resistance and high stability.



Electronics



# Slip Ring for CT



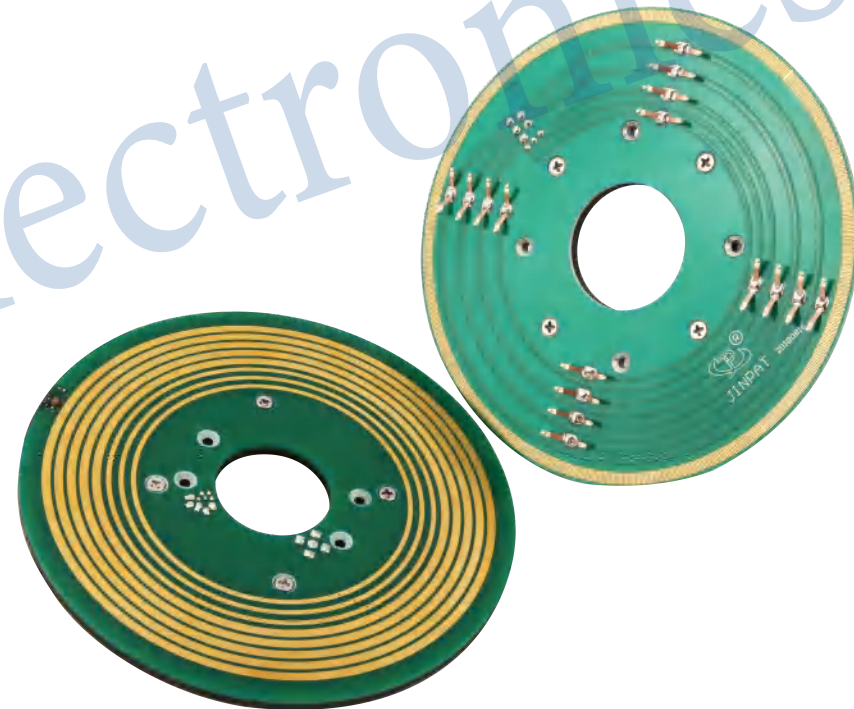
**JINPAT**

## SOLUTIONS

- The solution provided by LPK/LPKS pancake slip ring for equipment with limited axial space

## TECHNICAL FEATURES

It can be divided into integrated pancake slip ring and separate pancake slip ring;  
The minimum thickness can reach 5.4mm, the transmission of analog and digital signal power and signal mixed transmission, shock and vibration resistance, maintenance-free



# Immunology/Biochemistry Coagulation Analyzer



# JINPAT

## SOLUTIONS

- LPC-18A-M Medium Capsule Slip Ring

## TECHNICAL FEATURES

The working temperature can be customized from -60 °C to +300 °C, IP68

The working speed can reach up to 1000 rpm and lifespan up to 20 million rpm

Multiple signals can be integrated, with smooth operation and stable performance





# Slip Ring of Nucleic Acid Extraction and Purification Instrument



**JINPAT**

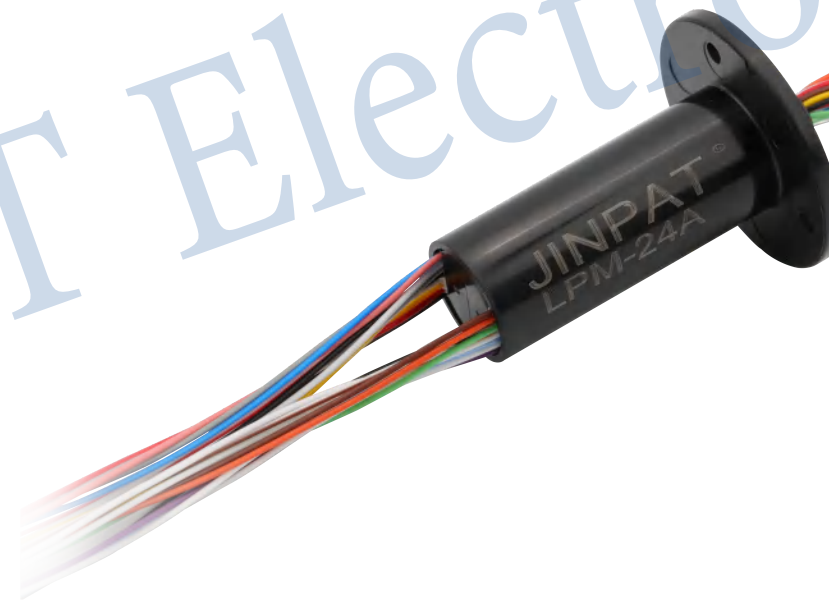
## SOLUTIONS

- LPM-06A Miniature Capsule Slip Ring
- LPM-24A Miniature Capsule Slip Ring
- LPM-30B Miniature Capsule Slip Ring

## TECHNICAL FEATURES

Stable performance, working speed up to 2000 rpm optional, lifespan up to 30 million rpm

Slip-ring shape, outlet mode, shell material, etc. are optional, IP68



# Animal Activity Recorder Slip Ring



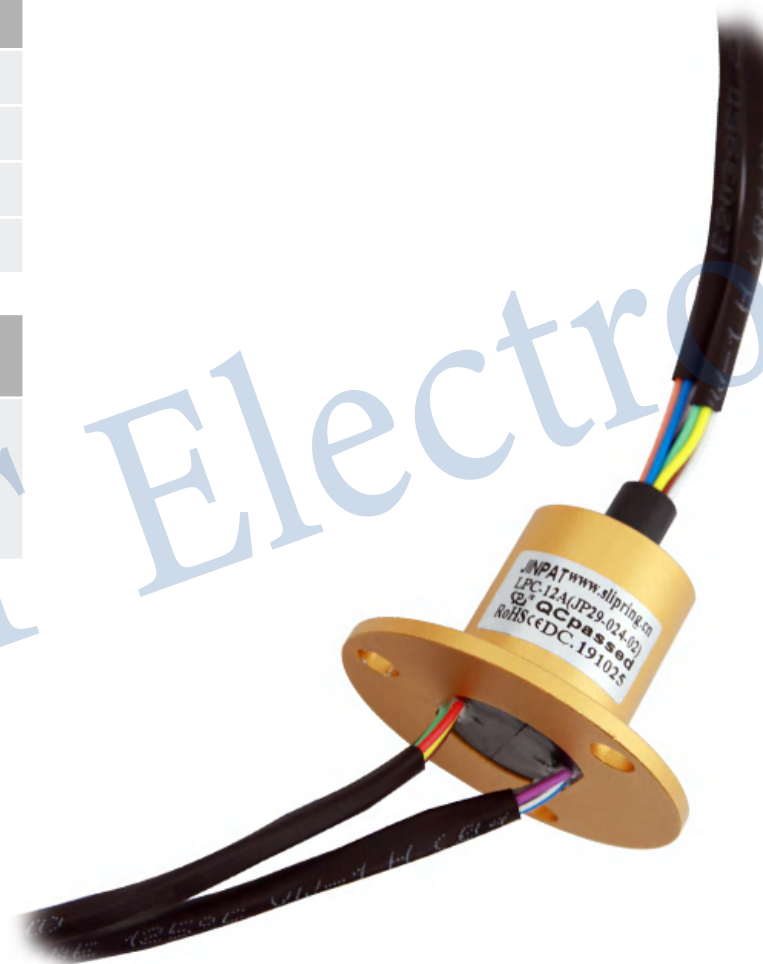
# JINPAT

## SOLUTIONS

- LPC-06A Medium Capsule Slip Ring
- LPC-06T Medium Capsule Slip Ring with Through-hole
- LPC-12A Medium Capsule Slip Ring
- LPC-12T Medium Capsule Slip Ring with Through-hole

## TECHNICAL FEATURES

The min. aperture is 5mm-6.4mm;  
It can customize the requirements of high protection,  
high speed, high lifespan and low torque, and can  
integrated multiple signals





**JINPAT**

# Rehabilitation Training Robot Slip Ring

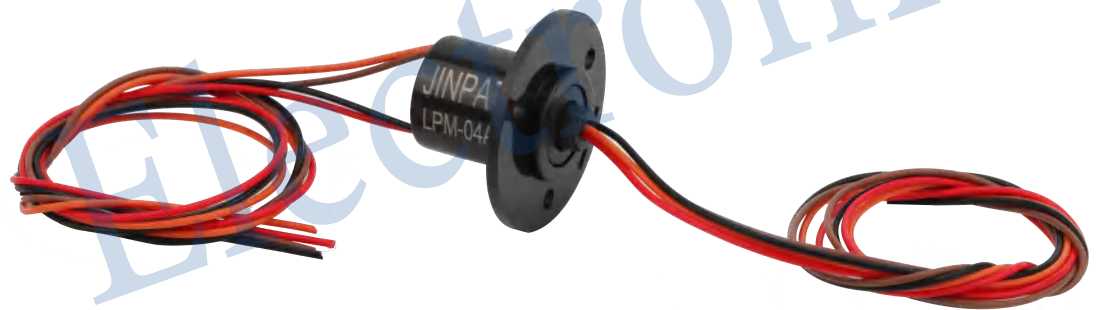
## SOLUTIONS

- LPM-04A miniature slip

## TECHNICAL FEATURES

The outer diameter is 12.5mm~16mm;  
Slip-ring shape, outlet mode, shell material, etc.  
are optional, with IP68

The working speed can reach up to 2000 rpm  
and the lifespan up to 30 million rpm



# Slip Ring of Medicine Filling Machine

## SOLUTIONS

- LPT038-0240-2S hollow shaft slip ring

## TECHNICAL FEATURES

The center hole can be selected from 0 to 1000mm, and can pass the thermocouple signal; It can integrated high-frequency, optical fiber, encoder, waveguide, gas-liquid and other rotary joints





**JINPAT**

# Multi-spindle knee Prosthesis Slip Ring

## SOLUTIONS

- LPR-04R (JP05-003-02) pin connection slip ring

## TECHNICAL FEATURES

Exquisite design, pin contact replacing wire contact, low contact resistance, ROHS, smooth operation and convenient installation

