

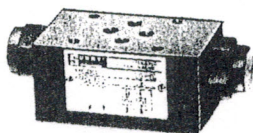


SUNNY
HYDRAULICS

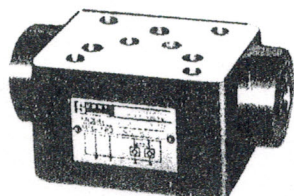
積層式引導止逆閥

Pilot Operated Check Modular Valves 02, 03 Series

記號 / SYMBOLS

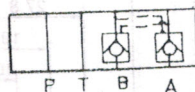


PCV-W-02M-10

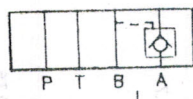


PCV-W-03M-10

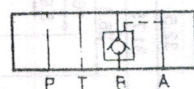
PCV-W-0※M



PCV-A-0※M



PCV-B-0※M



型式號碼說明

MODEL NUMBER DESIGNATION

PCV-W-02M-1-10

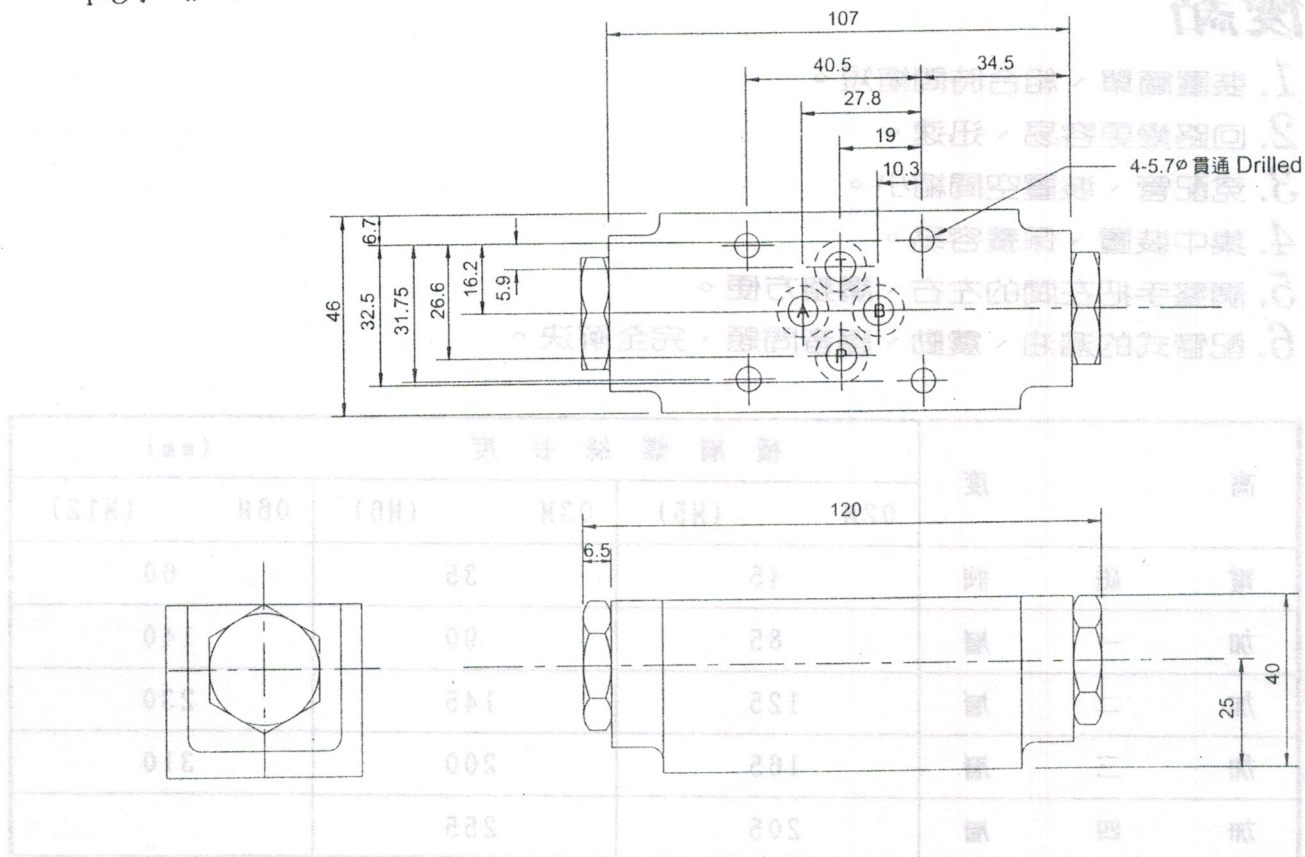
└── design series
└── cracking pressure
└── type
└── control ports W:A,B ports. A:A port. B:B port
└── pilot operated check valve.

性能表 / SPECIFICATION

types	pipe diameter (nominal, in)	max pressure (kgf/cm ²)	rated flow (l/min)	cracking pressure (kgf/cm ²)	weight (kgf)
PCV-W-02M-1-10	1/4	250	40	1: 0.5 2: 5.0	1.2
PCV-W-03M-1-10	3/8	210	80	1: 0.5 2: 5.0	2.5

外型尺寸圖 / DIMENSIONS

PCV-W-02M



PCV-W-03M

PCV-B-03M

PCV-A-03M

