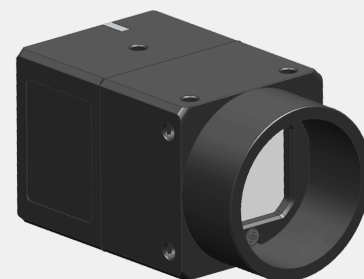


Independent
Development

MV-SUS240GC-M

The transmission speed of USB3.0 is significantly higher than USB2.0 and GigE cameras. With 5Gbps transmission bandwidth and high-speed sensor, the camera of 0.3MP and 800 fps can achieve a minimum transmission time of 1.2 ms, and a 20MP pixel camera can also reach 18fps; Due to the abundant transmission bandwidth, a computer is compatible with multiple camera operation, meanwhile, high frame rate can be guaranteed; The USB 3.0 series has a low CPU utilization, adopting DMA transmission, and the 5Gbps data transmission hardly occupies CPU resources.



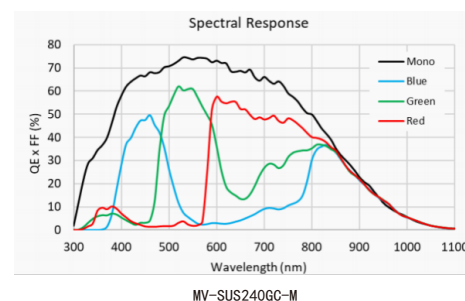
Application Industry :

It is widely used in electronic 3C, automatic semiconductor, logistics code scanning, intelligent transportation, biomedicine, package printing, etc.

Product Features :

- The camera comes with programmable IO.
- Support external trigger strobe to take photos synchronously.
- Support 8bit to 12bit raw data output.
- Fully compatible with GIGE camera's SDK for seamless replacement.
- Multiple cameras on one computer can work stably without dropping or losing frames for a long time.
- Support PC Linux system and ARM Linux system, available to be integrated into embedded devices.
- Compatible with Vision protocol, seamlessly compatible with Halcon, VisionPro, Labview and other vision software.

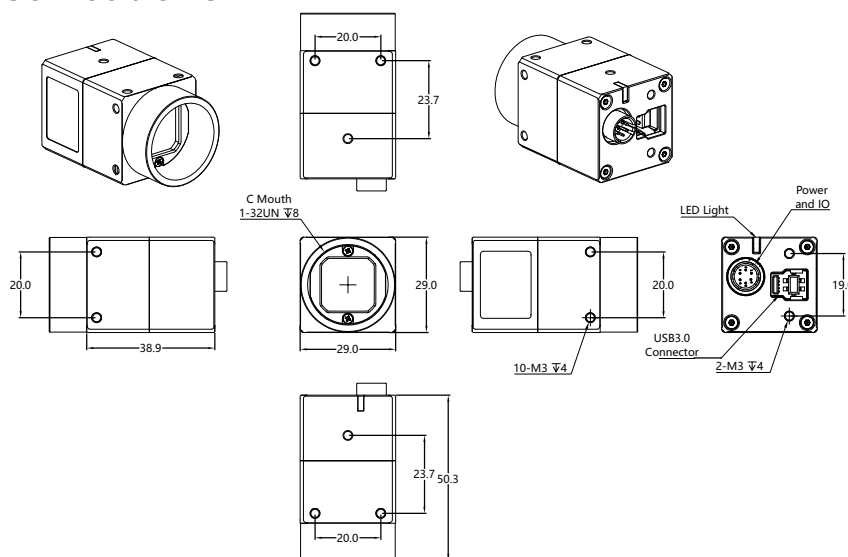
Spectral Response Curve :



MV-SUS240GC-M

Mechanical Specifications :

unit:mm



MV-SUS240GC-M-T1V-C

TECHNICAL PARAMETER

Specifications	Model	MV-SUS240GC	MV-SUS240GM
Sensor		1/1.7" CMOS	
Camera type		Color	Mono
Pixel size		4umx4um	
Effective pixels		2.4MP	
Resolution @ frame rate		2048X1200@158.5fps	
Sensitivity		$3.26 \times 10^{-7} \text{e}^- / ((W/m^2) \cdot s) @ 550\text{nm}$	
Exposure mode		Frame exposure	
Signal to noise ratio		40.7dB	
GPIO		1 opto-coupler isolated input, 1 opto-coupler isolated output, 1 non-isolated input and output	
Output pixel width		12bit	
AD width		12bit	
Dynamic range		68.0dB	
Frame buffer		128M Bytes	
Exposure time range		0.0041~68954.3520ms	
Maximum gain (multiple)		16	
User EEPROM		2K Bytes	
Frequency output format		Bayer GB 8/12bit	Mono 8/12bit
Video output format		USB3Vision, GenICam	
Lens interface		C-mount	
Data interface		USB3.0	
Power supply		USB 5V/Aviation head power supply 12V~24V	
Power		$\leq 3\text{W}$	
Boundary dimension		29x29x38.9mm (Lens base and rear shell interface are not included)	
Weight		<70g	
Working temperature		0~50°C	
Working humidity		20~80% (No Condensation)	
Storage temperature		-30~60°C	
Storage humidity		20~95% (No Condensation)	
Operating system		WINXP/7/8/10/11 systems (32 & 64-bit), Linux systems (32 & 64-bit), ARM Linux system, Android system, MAC system	
Drive program		DirectShow components Halcon special components Labview dedicated drive OCX components TWAIN components	
Programming language		C/C++/C#/VB6/VB.NET/Delphi/BCB/Python/Java	
Other functions:		Support ROI of any size custom resolution, contrast and gamma adjustment, saturation adjustment, white balance correction, black level correction, custom dead point coordinate correction, ISP image processing acceleration, 3D noise reduction, custom LUT table, frame rate adjustment, custom camera name, etc.	

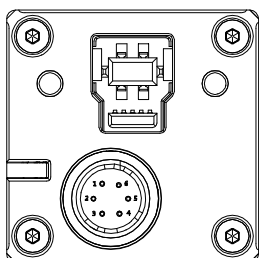
www.mindvision.com.cn



☎ 400 Tel: 400-998-7281
 ✉ E-mail (Sales Department): market@mindvision.com.cn
 ✉ E-mail (Technical Department): support@mindvision.com.cn

📍 South China Company: 5th Floor, Building 6, Chiayiyuan Science and Technology Park, Huaning Road, Longhua New District, Shenzhen
 📍 Central China Company: Building 5D, Yida Chuangzhi Island, Dangui Road, Wangcheng Economic Development Zone, Changsha City
 📍 East China Company: 9th Floor, Jizhi Business Plaza, Erquan East Road, Xishan District, Wuxi City, Jiangsu Province

Line Sequence Definition



Port	Pin number	Line color	Signal name	Signal description	Remarks
Port A	1	Red	DC12V+	Camera power input positive terminal	
	2	White	GPI_1+/TRIG_IN+	GPI_1 Positive terminal/trigger input positive terminal	Default is trigger input
	3	Brown	GPI_2/GPO_2	GPIO_2 Input / output	Non-isolated bidirectional IO
	4	Green	GPO_1+/STRB_OUT+	GPO_1 Positive terminal/strobe output positive terminal	Default is strobe output
	5	Yellow	GPO_1-/STRB_OUT-/TRIG_IN-	GPO_1 Negative terminal/strobe output negative terminal/trigger input negative terminal	GPIO common negative terminal
	6	Black	GND	Camera power input negative terminal	

www.mindvision.com.cn



☎ 400 Tel: 400-998-7281

✉ E-mail(Sales Department):market@mindvision.com.cn

✉ E-mail(Technical Department):support@mindvision.com.cn

📍 South China Company: 5th Floor, Building 6, Chiayiyuan Science and Technology Park, Huaning Road, Longhua New District, Shenzhen
 📍 Central China Company: Building 5D, Yida Chuangzhi Island, Dangui Road, Wangcheng Economic Development Zone, Changsha City
 📍 East China Company: 9th Floor, Jizhi Business Plaza, Erquan East Road, Xishan District, Wuxi City, Jiangsu Province