



Gate Series 闸门系列



扫码了解更多产品

AIDSUN® 南京艾德森水务有限公司
爱德森 Nanjing Aidesen Water Service Co., Ltd

地址: 南京市六合区雄州街道后潘路1号
邮编: 211500
电话: 025-57507911
传真: 025-57750693
网址: www.adswater.cn

Address: No.1 Houpan Road, Xiongzhou Street, Liuhe
District, Nanjing City
Zip: 211500
Tel: 025-57507911
Fax: 025-57750693
Http: www.adswater.cn

南京艾德森水务有限公司
Nanjing Aidesen Water Service Co., Ltd



INTRODCTION

企业简介

南京艾德森水务有限公司，坐落于美丽的茉莉花故乡南京六合，这里区位优势、交通便捷，自然环境与人文底蕴相得益彰，为公司的发展提供了得天独厚的条件。

南京艾德森水务有限公司是蓝深集团控股企业，同时也是高新技术企业、科技型中小企业以及创新型中小企业。依托蓝深集团先进的管理模式、前沿技术及精良工艺装备，南京艾德森水务有限公司得以在发展中不断创新突破，迅速成长。

公司业务广泛，涵盖水资源专用机械设备、环境保护专用设备、泵及真空设备等的制造与销售，在市政公用工程、环保工程、水利工程施工领域也有着丰富经验，能够承接各类工程项目，为客户提供全方位的水务解决方案。同时，公司还提供环保技术咨询、水利相关咨询等专业服务，助力客户解决各类水务难题。

南京艾德森水务有限公司始终将技术创新作为发展的核心驱动力，公司目前已拥有多项专利及条软件著作权，这些成果见证了公司在技术研发上的不懈努力与卓越成就。公司连

续入选南京市瞪羚企业，在创新发展的道路上一路高歌猛进；公司荣获南京市知识产权示范企业和江苏省知识产权管理贯标绩效评价合格单位，进一步彰显了公司在知识产权管理和创新能力方面的突出表现。

公司产品多元化，潜水排污泵、潜水搅拌机、潜水轴流泵、污水处理设备，一体化预制泵站等产品凭借可靠的质量和稳定的性能，在市场上赢得了良好口碑，广泛应用于污水处理、水利工程、工业制造等多个行业领域，为保障水资源合理利用和生态环境改善发挥了重要作用。

秉持“以质量求生存，以诚信求发展，以服务创效益”的经营理念，南京艾德森水务有限公司将客户需求放在首位，注重产品质量与服务细节，致力于为客户提供优质、高效、专业的水务产品和服务。未来，南京艾德森水务有限公司将继续扎根水务领域，不断开拓创新，努力为推动行业发展和生态环境保护贡献更大的力量。

Nanjing Adison Water Co., Ltd. is located in Liuhe, Nanjing, the beautiful hometown of the folk song "Jasmine". With its superior location, convenient transportation, and the harmonious integration of natural environment and cultural heritage, it enjoys unique advantages for development.

Nanjing Adison Water Co., Ltd. is a holding company of Lanshen Group. It is also a high - tech enterprise, a technology - based small and medium - sized enterprise, and an innovative small and medium - sized enterprise. Relying on Lanshen Group's advanced management mode, cutting - edge technology, and sophisticated process equipment, Nanjing Adison Water Co., Ltd. has been able to innovate and break through continuously in its development and grow rapidly.

The company has a wide range of businesses, covering the manufacturing and sales of special machinery and equipment for water resources, special equipment for environmental protection, pumps and vacuum equipment, etc. It also has rich experience in the construction of municipal public works, environmental protection projects, and water conservancy projects. It can undertake various engineering projects and provide customers with comprehensive water - related solutions. At the same time, the company provides professional services such as environmental protection technical consultation and water - conservancy - related consultation to help customers solve various water - related problems.

Nanjing Adison Water Co., Ltd. always regards technological innovation as the core driving force for development. The company currently owns a number of patents and software copyrights, which are a testament to its unremitting efforts and outstanding achievements in technology research and development. The company has been continuously selected as a Gazelle Enterprise in Nanjing, making great progress on the path of innovative development. It has won the title of Nanjing Intellectual Property Demonstration Enterprise and has passed the performance evaluation of the Intellectual Property Management Standardization in Jiangsu Province, further demonstrating its outstanding performance in intellectual property management and innovation capabilities.

The company's products are diversified. Products such as submersible sewage pumps, submersible agitators , submersible axial - flow pumps, sewage treatment equipment, and integrated prefabricated pumping stations have won a good reputation in the market for their reliable quality and stable performance. They are widely used in many industries such as sewage treatment, water conservancy projects, and industrial manufacturing, playing an important role in ensuring the rational use of water resources and the improvement of the ecological environment.

Upholding the business philosophy of "Survive by Quality, Develop by Integrity, and Create Benefits through Service", Nanjing Adison Water Co., Ltd. puts customer needs first, pays attention to product quality and service details, and is committed to providing customers with high - quality, efficient, and professional water - related products and services. In the future, Nanjing Adison Water Co., Ltd. will continue to be rooted in the water - related field, keep exploring and innovating, and strive to make greater contributions to promoting the development of the industry and ecological environmental protection.

Profile of Aidesen pumps



目 录
CONTENTS

MZF、MZY型明杆式铸铁镶铜闸门 -----	1-9
TYPE-MZF、MZY CAST-IRON COPPER-INLAID GATE	
AZF、AZY型暗杆式铸铁镶铜闸门 -----	10-11
TYPE-AZF、AZY STAFF-HIDDEN CAST-IRON COPPER-INLAID ROUND GATE	
渠用钢制闸门 -----	12-18
STAINLESS STEEL HEAD GATE	
DXY型电动旋转调节堰门 -----	19-20
TYPE-DXY ELECTRIC REVOLVED ADJUSTING WEIR-GATE	
DY型铸铁镶铜调节堰门 -----	21-23
TYPE-DY CAST-IRON COPPER-INLAID ADJUSTING WEIR-GATE	
PM型拍门 -----	24-26
TYPE-PM-TO-DOOR	
HF型滑阀 -----	27-28
TYPE-HF SILDE VALVE	
PNF型排泥阀 -----	29-30
TYPE-PNF MUD VALVE	
大型水利闸门 -----	31-42
LARGE HYDRAULIC GATE	
QB系列启闭机 -----	43-46
SERIES C HEADSTOCK GEARS	
集成式(电液一体)启闭机 -----	47-50
INTEGRATED (ELECTRO-HYDRAULIC INTEGRATED) HOIST	
SBZ型铸铁镶铜速闭闸门 -----	51-52
TYPE-SBZ CAST-IRON COPPER-INLAID GUARD VALVE	

MZF、MZY型 铸铁镶铜 闸门
Type-MZF、MZY cast-iron copper-inlaid gate

简介
Introductions

闸门（闸板阀）作为一种水位控制设备，它的制造安装符合建设部CJ/T3006-92标准和美国水工业协会AWWA.501-87标准，广泛应用于市政、石化、铁道、冶金、煤炭、纺织、电力、轻工、食品、医药、环保、污水处理等系统工程中。其组合配套产品一般由传动装置、支座、丝杆、闸板、门框架、楔块等零部件组成。作为管道和交汇窖井、泥砂池、污水渠、泵站进水口、清水池等水处理构筑物上作截止、疏通或调节水流水位之用，也可以用于农业排灌或其它水利设施中，并可与手动、电动等启闭机组合配套使用，实现现场操作或远距离集中控制，还可与微机联动控制，我公司是最早生产该产品的专业厂家之一，综合国内外同类产品的先进技术和工艺，多次对产品结构及加工工艺进行改进。。

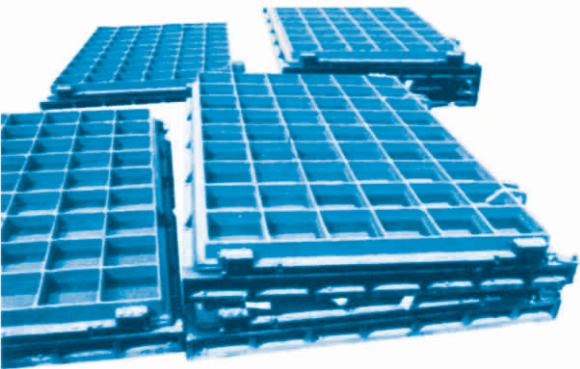
Gate (gate valve) as a kind of water level control device, my company was the first professional production of one of the manufacturers of the products, Syndicated news Guonei Wai Tongleichanpin of advanced Ji Shu and Gongyi, Duoci right Chanpin structure and processing technology for Gaijin. Its manufacture and installation standards and meet the Ministry of Construction CJ/T3006-92 American Water Industry Association AWWA.501-87 standard, widely used in municipal, petrochemical, railway, metallurgy, coal, textile, power, light industry, food, medicine, environmental protection sewage treatment system engineering. The combination of complementary products generally gear, bearing, screw, gate, door frame, composed of wedge and other components. Scenting well as pipeline and intersection, sediment pond, sewers, pumping stations, water intake, water treatment structures such as clear water tank to make deadline to clear or adjust the water level of use can also be used for agricultural irrigation or other water conservancy facilities, and can and Manual, electric hoist, etc. supporting the use of combinations to achieve on-site operation or remote centralized control, can also be linked with computer control.

用途
Application

铸铁镶铜闸门主要用于给排水、防汛、灌溉、水利、水电工程中，用来截止、疏通水流或起调节水位的作用。本系列闸门可分为方形MZF、圆形MZY和矩形MZJ三类，它采用独特的外弧形设计，结构合理、受力均匀，采用优质灰口铸铁或球墨铸铁，止水密封面镶铜条或橡胶，并经精密加工后配研，达到平面接触密封，密封性能好，当密封止水性能下降时，可通过楔块装置的调整加以解决。

Cast Iron Copper Gate is mainly used for drainage, flood control, irrigation, water conservancy, hydropower projects, for close, clear water or water from the regulating role.

This series of gates can be divided into square MZF, round MZY and three rectangular MZJ it outside the arc unique design, reasonable structure, force uniform, high quality gray iron or ductile iron, sealing close Cover set of copper strips or rubber, and processed by the precision with research, to plane contact sealing, good sealing, sealing performance degradation when the seal when the wedge device can be adjusted to be addressed.



特点
Features

1. 门体、门框等由灰铸铁（或球墨铸铁）制成，结构强度高，耐腐蚀性好，承压能力大；

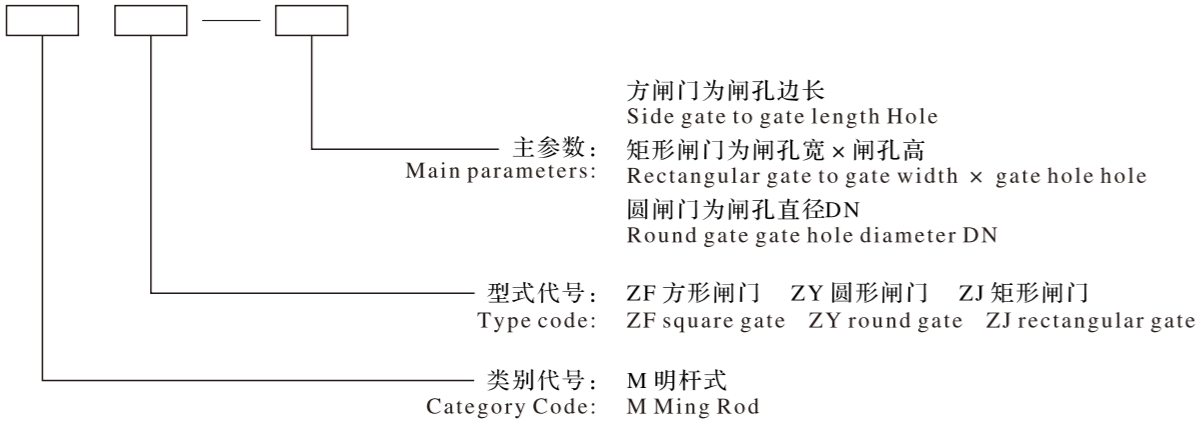
2. 密封面采用青铜精密加工，密封性能好，渗水量小：正向0.72L/m·min；反向：1.25L/m·min；

3. 品种齐全，适用范围广，安装调整方便。
1. Door、door frames, etc. from the gray cast iron (or cast iron ball) is made of high structural strength, good corrosion resistance, pressure large capacity;

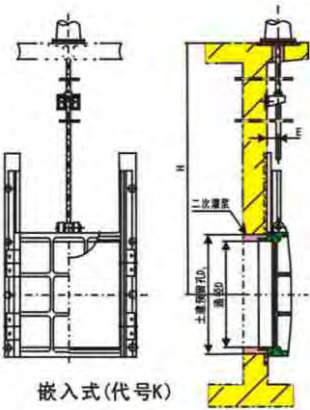
2. Sealing surface with bronze precision machining, good sealing performance, a small amount of water seepage: Forward 0.72L / m · min; reverse: 1.25L / m · min;

3. Variety, wide range of applications, easy to install.

型号表示方法
Type and its indication

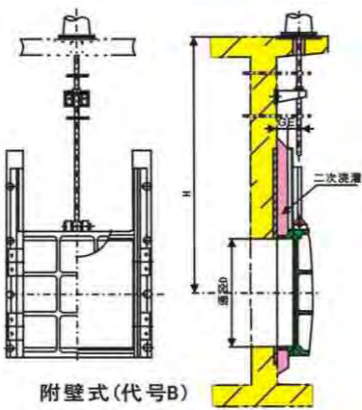


安装形式
Mounting patterns



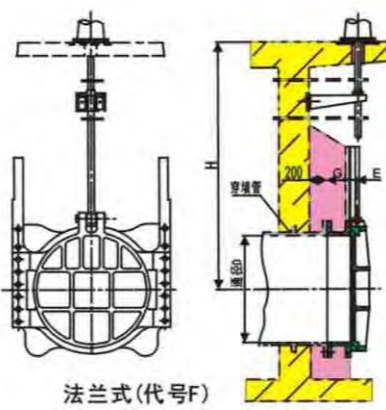
嵌入式(代号K)

土建预留孔比闸门通径略大，推荐用于Φ200~Φ1200、□300~□1000之间的单向闸门的安装。
Civil reserve hole diameter slightly larger than the gate, recommended for Φ200 ~ Φ1200, □300 ~ □1000 one-way between the gate installation.



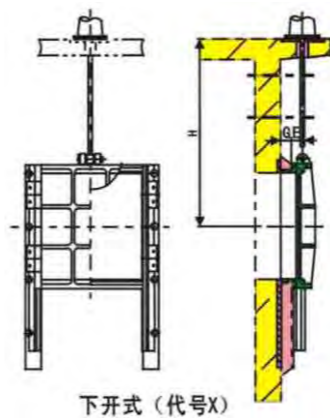
附壁式(代号B)

土建预留孔比闸门通径相同，适用于所有规格的单向及双向闸门的安装，Φ1200和□1000以上规格推荐使用此种安装方式。
Civil reserved gate hole diameter than the same applies to the specifications of the one-way and two-way gate installation, Φ1200 and □1000 or more specifications of such installation is recommended.



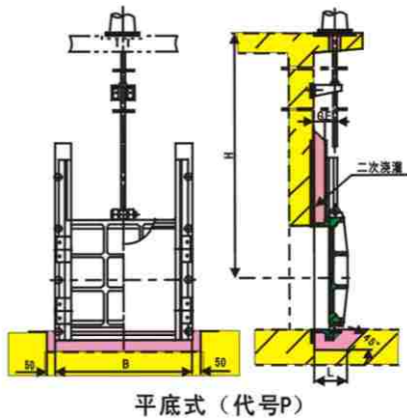
法兰式(代号F)

适用所有规格单向及双向圆闸门的安装，法兰标准：GB4216-84，PN0.6MPa。当穿墙管为钢管时，需与闸门法兰式配制一只钢法兰，安装时两法装配后穿管墙焊接。
All specifications for one-way and two-way round the gate of the installation, flange standard: GB4216-84, PN0.6MPa. As for the steel pipe wall, the need and the preparation of a gate flange steel flanges, installation of two methods through tube wall after assembly welding.



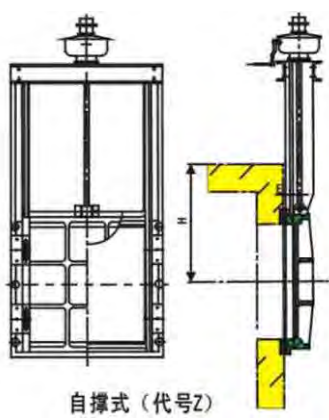
下开式(代号X)

适用于上开时无空间的场合，只适用于单向闸门的安装。
Apply to the open space when no occasion is only applicable to one-way gate installation.



平底式(代号P)

适用于泥砂量较大，特别有块状物容易在闸门前造成堵塞的场合。
Applicable to a large amount of sediment, particularly lumps easily cause blockage of occasions before the gate.



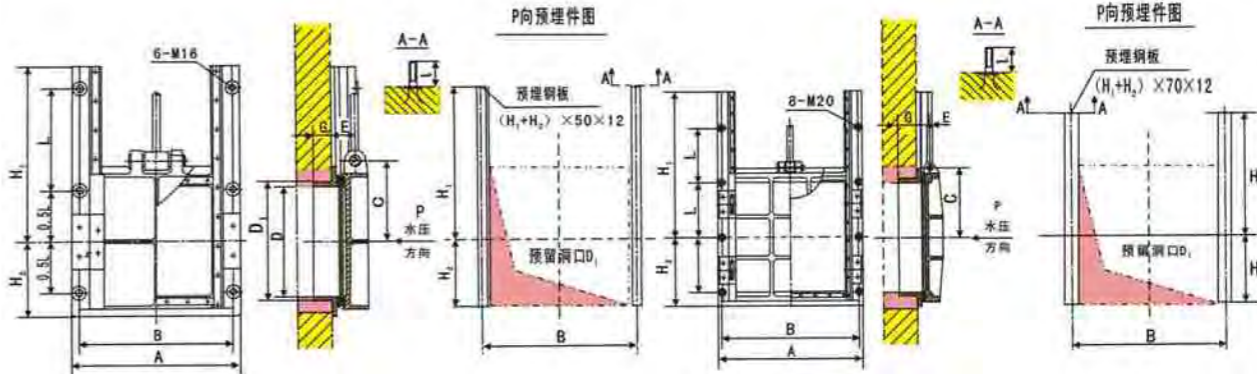
自撑式(代号Z)

无需指定启闭机的型号，仅需注明手动或电动即可；适用于渠道安装。上部无密封要求或上部无法设定启闭机平台的场合，也可作成平底式。
Without specifying the type hoist, you can only specify manual or electric; apply to channel installation. No sealing of the upper or upper hoist platform can not set the occasion, also could be made into flat-bottomed type.

MZF铸铁镶铜方闸门

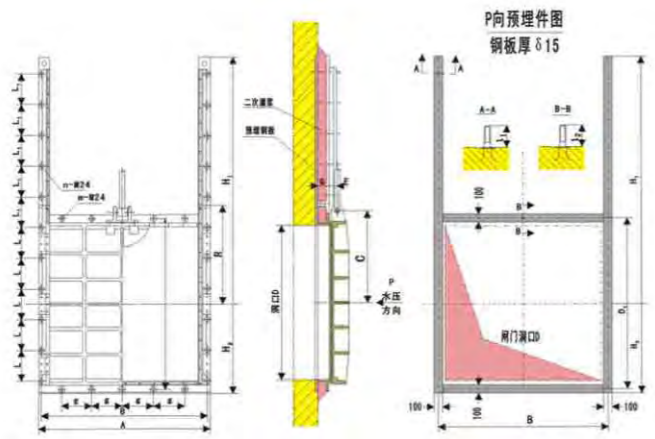
MZF Cast Iron Copper side gate

1、(300~1000)

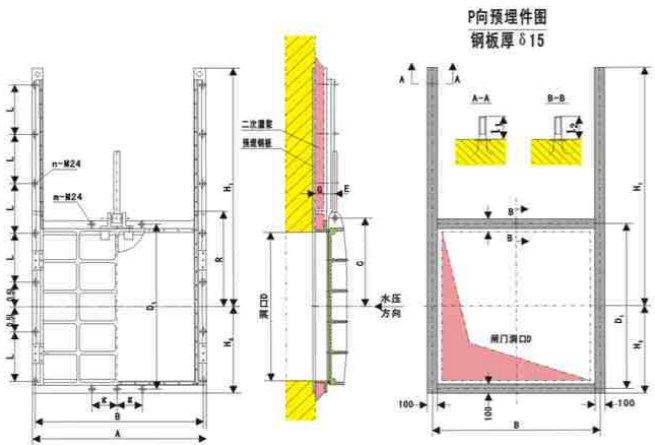


通径D	A	B	D ₁	C	E	G	L	H ₁	H ₂
□300	456	416	□330	220	60	50	280	480	205
□400	556	516	□430	290	60	50	350	630	225
□500	656	616	□530	340	65	50	450	750	310
□600	790	750	□630	380	75	70	300	800	350
□700	890	850	□730	440	75	70	350	850	410
□800	1010	960	□830	505	83	80	400	1200	505
□900	1110	1060	□930	555	83	80	450	1050	550
□1000	1240	1160	□1030	610	90	73	500	1350	605

2、（1200~3500）



MZF1200~MZF1800



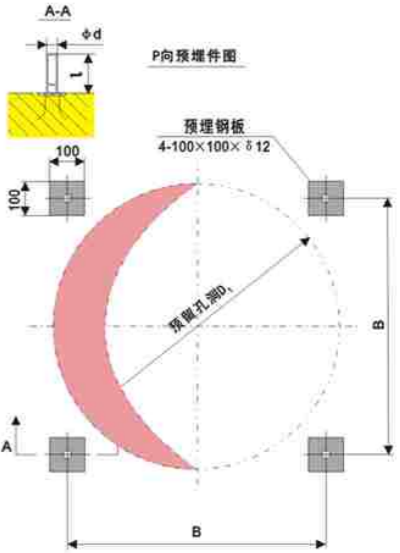
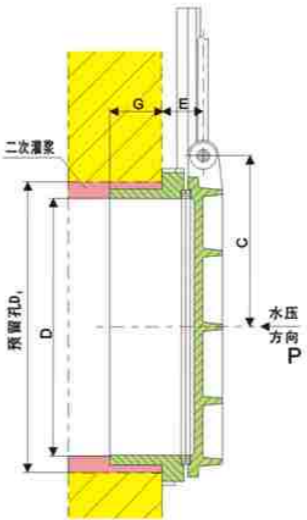
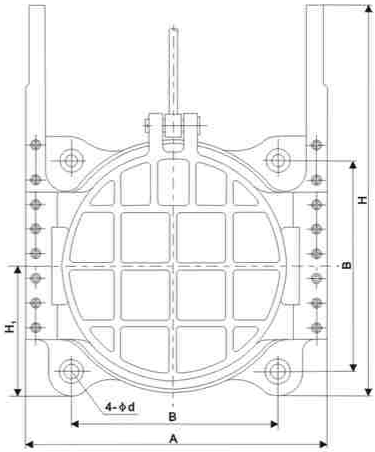
MZF2000~MZF3500

通径D	g	E	G	R	D ₁	B	A	L ₁	L	11	12	C	H ₁	H ₂	n	m
□1200	/	105	80	825	/	1370	1430	475	400	225	/	792	1825	715	12	/
□1400	/	100	80	925	/	1580	1640	500	450	225	/	893	1925	815	12	/
□1500	250	115	80	1000	1670	1680	1750	500	500	245	125	940	2000	875	12	4
□1600	265	115	100	1085	1770	1780	1840	540	530	245	125	975	2085	925	12	4
□1800	600	112	100	1135	1970	1980	2050	635	600	245	125	1105	2285	1020	12	4
□1900	400	125	120	1200	2070	2100	2170	525	375	290	150	1175	2600	1085	18	6
□2000	400	125	120	1250	2180	2200	2270	500	400	290	155	1225	2650	1135	18	6
□2200	400	125	120	1300	2400	2400	2500	500	420	285	155	1320	2695	1245	18	10
□2400	400	125	120	1380	2580	2580	2650	430	480	290	155	1420	2780	1330	18	12
□2500	400	130	120	1425	2700	2700	2800	500	400	285	155	1460	3325	1400	24	12
□2600	400	130	120	1525	2800	2800	2880	500	575	295	155	1510	3425	1440	20	12
□2800	600	130	140	1650	3020	3030	3130	500	400	320	210	1610	3540	1550	24	8
□3000	500	125	120	1725	3200	3200	3300	600	550	295	155	1710	3620	1650	20	12
□3500	700	170	180	2050	3730	3750	3850	700	700	365	225	1975	3950	2105	22	10

MZY铸铁镶铜圆闸门

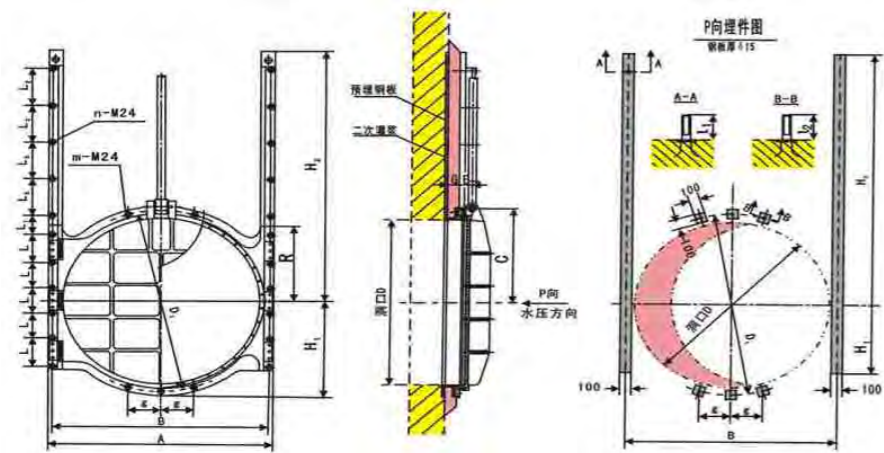
MZY Cast Iron Copper Round gate

1、（Φ200~1200）

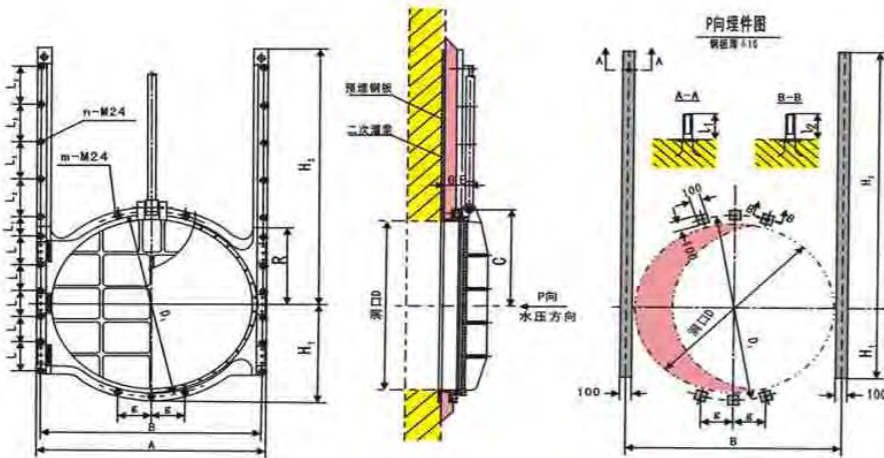


通径D	D ₁	A	B	C	E	G	H	H ₁	4- Φd	地脚螺栓L
Φ200	Φ270	370	220	160	55	90	415	145	4-M12	30
Φ300	Φ380	470	300	210	60	100	560	190	4-M12	35
Φ400	Φ480	590	400	270	70	100	715	245	4-M16	40
Φ500	Φ580	730	500	320	70	100	875	295	4-M16	40
Φ600	Φ680	820	600	380	70	120	1020	345	4-M16	40
Φ700	Φ780	940	700	430	75	120	1200	410	4-M16	40
Φ800	Φ890	1040	800	490	80	120	1350	460	4-M20	45
Φ900	Φ990	1156	900	540	85	120	1505	515	4-M20	45
Φ1000	Φ1090	1250	1000	590	90	120	1655	565	4-M20	45
Φ1200	Φ1300	1440	1200	700	95	120	1985	670	4-M24	45

2、（Φ1400~2700）



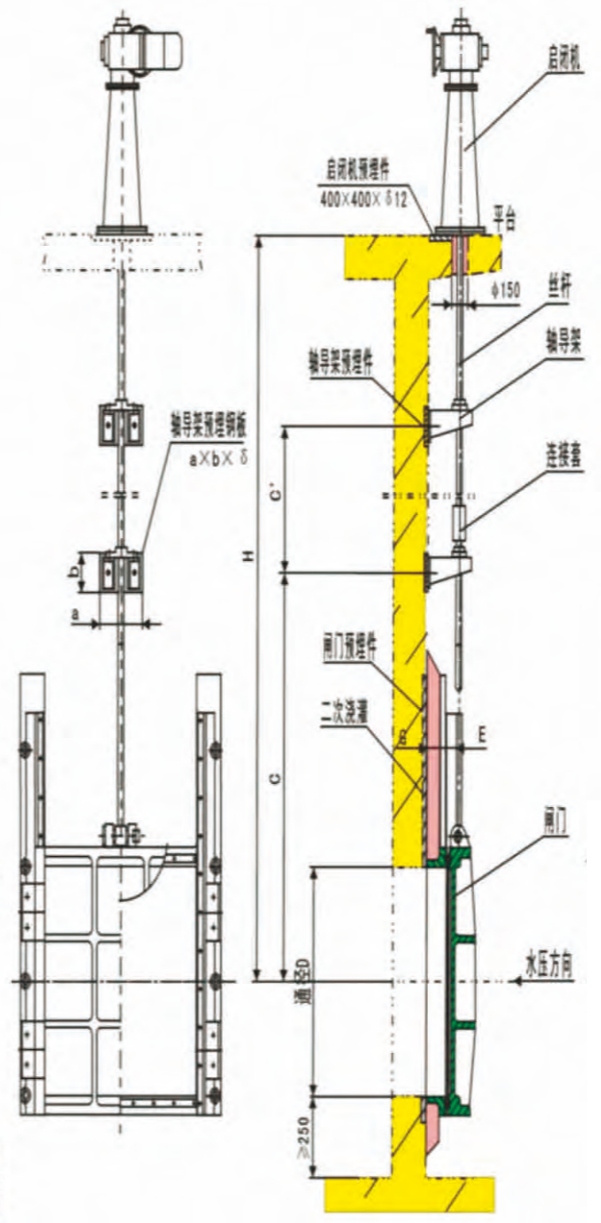
MZY1400~MZY1800



MZY2000~MZY2700

通过D	g	E	G	R	D ₁	B	A	L	L ₁	L ₂	11	12	C	H ₁	H ₂	n	m
Φ1400	/	95	120	670	/	1570	1630	380	255	600	270	/	850	2005	815	14	/
Φ1500	250	104	100	700	Φ1680	1680	1750	400	250	650	250	135	875	2060	875	14	4
Φ1600	275	104	100	770	Φ1775	1780	1850	430	275	600	250	135	925	2130	925	14	4
Φ1700	285	110	120	775	Φ1870	1880	1950	450	225	750	285	155	970	2130	975	14	6
Φ1800	300	110	110	820	Φ1970	1980	2050	480	205	800	275	150	1025	2175	1030	14	6
Φ2000	400	124	120	875	Φ2180	2200	2270	310	275	450	295	155	1150	2780	1135	22	6
Φ2200	440	124	120	930	Φ2380	2400	2470	330	275	500	295	155	1250	2832	1230	26	6
Φ2500	500	120	150	1130	Φ2690	2700	2770	280	315	450	295	155	1400	3035	1385	26	6
Φ2700	550	120	150	1220	Φ2890	2900	2970	300	325	450	295	155	1500	3125	1485	26	6

闸门与启闭机布置图
Gate and layout



轴导架布置说明
Description shaft guide frame decoration

轴导架的安装必须以闸门全开为原则，C与C'应符合下列要求：
 $1.5D+300 \leq C \leq 60d$ $D+500 \leq C' \leq 60d$
其中：
D-圆闸门通过或方闸门洞口高度（mm） d-丝杠直径（mm）

闸门启闭力的计算
启门力： $F_a = n \cdot (F + W_1 + W_2)$
闭门力： $F_b = n \cdot (F - W_1 - W_2)$
其中：
W1-门体自重（T） W2-丝杠自重（T）
n-系数1.1~1.3，闸门经常操作取大值，反之取小值
F-水压产生的阻力 $F = S \cdot h \cdot \bar{u}$ （T） S-闸板面积（m²）
h-闸孔中心至最高水位高度（m）
 \bar{u} -密封面的摩擦系数，一般取0.3

Axis guide the mounting principle must be fully open the gate,
C and C' shall meet the following requirements:
 $1.5D + 300 \leq C \leq 60d$ $D + 500 \leq C' \leq 60d$
Of which:
D-round gate to gate hole diameter or height (mm)
d-screw diameter (mm)

Calculation of gate opening and closing force
Inception force: $F_a = n \cdot (F + W_1 + W_2)$
Star power: $F_b = n \cdot (F - W_1 - W_2)$
Of which:
W1-door body weight (T)
W2-screw weight (T)
n-coefficient of 1.1 to 1.3, the regular operation of the gate to
take a large value, whereas the value of taking small
F-water pressure generated resistance
 $F = S \cdot h \cdot \bar{u}$ (T) S-gate area (m²)
h-gate to the highest level of the hole center (m)
 \bar{u} -sealing surface of the friction coefficient of 0.3 general

轴导架预埋钢板尺寸

Embedded steel shaft guide frame size

规格尺寸 Size	Φ200~ Φ1200 □300~□1000	Φ1200~ Φ2200 □1200~□2200	> Φ1200 □2400~□3500
a×b× £	300×200× £12	400×300× £15	500×300× £15

安装事宜

Installation issues

1. 用户根据自己选择的闸门类型，按照相应的安装图预留闸门及启闭机安装位置。
2. 用吊铅垂线的方法预埋预埋件，保证其平面度和垂直度误差在1.5~3%范围内。
3. 用螺栓初步将闸框固定好，用吊铅垂线的方法测准闸座的平面度及垂直度误差在1/1000~2/1000范围内，允许加垫片，然后固定好闸板。
4. 为防止漏水，用水泥砂浆（二次浇注）按闸门与启闭机连接安装图中的要求在闸门四周及闸座脚下封头。
5. 启闭机的安装：把螺杆旋入启闭机的螺母内，待吊耳中心与启闭机中心重合后，点焊启闭机底板与预埋板，转动螺杆使闸板上下移动无卡阻，然后焊牢。

1. Users according to their choice of the gate type, in accordance with the appropriate gate and the installation of Figure reserved hoist position.
2. With a hanging plumb line method embedded embedded parts, to ensure its flatness and vertical error in the range of 1.5 to 3%.
3. Initially, gate box with bolts fastened with a hanging plumb line method of quasi gate seat of the plane and the vertical precision of 1 / 1000 2 / 1000 range, to allow additional pads, and then fixed the gate .
4. To prevent leakage, with cement mortar (second casting) by Gate and connected requirements to install the diagram around the gate and the gate seat at the foot of head.
5. Headstock machine installation: to screw the nut screw hoist, the pending lug center center coincides with the hoist, the hoist bottom spot and embedded board, turn screw to slide up and down move without jamming, and then weld.

订货说明及选用须知

Order instructions and use notes

1. 启闭机应根据启闭力和自动化程度确定，具体可参考启闭机样本。
2. 平台设计负荷应考虑正反双向承压（关闭力参考开启力）。
3. 当螺杆细长比H/d>200时应设置辅导架，其数量是根据井深不同而设定，设计时应与联轴器，吊耳不干涉（辅导架

与吊耳或联轴器的间距应大于闸门最大开启度）。

4. 工作时提升杆、联轴器、闸板都作上下移动为明杆式闸门，工作时螺杆不移动，闸板上下移动的称暗杆式闸门。
5. 订货时请详细注明型号、规格、安装与结构形式和中心标高H。
6. 本公司系列闸门正向承压水头≤10m，超过此水头时须特殊订货，当闸门两面均承受水压且反向水头大于3m时，请选用双向闸门，其安装采用附壁式形式。

7. 闸门门体及门框材料一般用灰铸铁制造，若需特殊材料和特殊形式闸门，请注明。

1. Hoist shall determine the lifting power and automation, specifically refer to hoist the sample.
2. Platform design load should be considered a two-way positive and negative pressure (closing force reference opening force).
3. When the screw slenderness ratio H / d> 200 should be set up counseling frame, the number is set according to different well depth, the design should be with the coupling, hanging ears of non-interference (guidance frame and hanging ears or coupling the spacing should be larger than the maximum gate opening degree).
4. Work to enhance rod, coupling, gate is moved up and down for the next rod for gate work screw does not move, slide up and down movement of the darkness he called rod gate.
5. When ordering please specify type, specification, installation and central level with the structure H.
6. The Company series gate positive pressure head ≤ 10m, over the head to be a special order, when the gate and the reverse sides are under pressure head is greater than 3m, please use two-way gate, the installation using the form attached to the wall .
7. Gate door and door frame material generally used gray cast iron, For special materials and special forms of the gate, please specify.



注：本厂供货不含任何预埋件，需要时请注明。

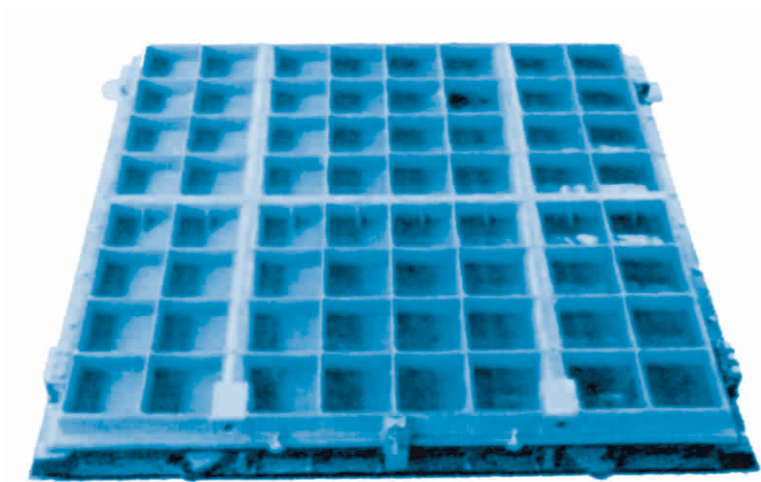
Note: Our supplier does not contain any embedded parts, please specify when necessary.

AZF、AZY型暗杆式铸铁镶铜闸门
Type-AZF、AZY Staff-hidden cast-iron copper-inlaid round gate

用途与性能
Use and performance

常用于给排水防汛等水利工程，尤其是风景区道路等不允许采用明杆式圆闸门安装的场合，由门框、闸板、密封圈、可调式楔块组成，具有构造简单，安装方便等特点。

Commonly used in flood control drainage and other water conservancy projects, especially scenic roads do not allow use of the gate next round rod installation of the occasion, by the door, gate, ring, adjustable wedge composed of simple structure, easy installation, etc.



技术参数
Technical parameters

1. 闸门采用附壁式安装，闸板设于迎水面。

2. 闸板压向门框允许最大压力0.1MPa。

3. 闸板压里门框允许最大压力0.04Mpa。

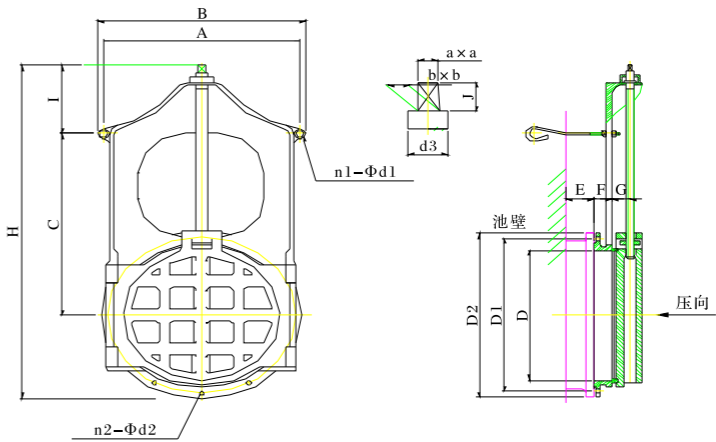
4. 密封面渗水量不大于0.08L/min·m。
1. Use with wall-mounted gate, gate located at the positive side

2. Ram pressure to the door frame to allow maximum pressure 0.1MPa.

3. Ram pressure inside door frame to allow maximum pressure 0.04Mpa.

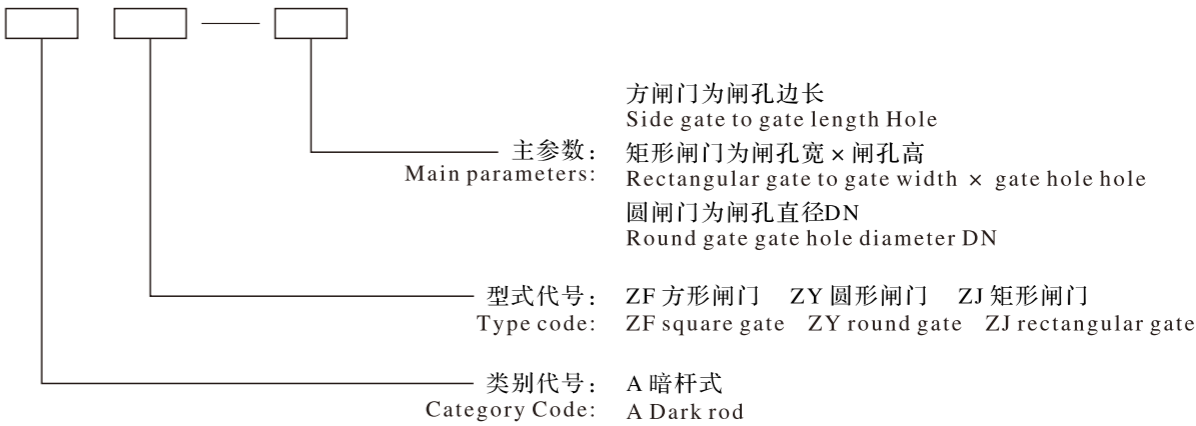
4. Sealing surface seepage may not exceed 0.08L/min·m.

AZY型暗杆式铸铁镶铜圆闸门外形及安装尺寸
AZY type dark copper round rod Cast Iron Gate appearance and installation dimension



※ 暗杆式的所有类型闸门安装尺寸请参考MZF方闸门、MZY圆闸门外形及安装尺寸
※ Dark rod installation of all types of gate to gate size, please refer to MZF, MZY round appearance and installation dimension gate

型号表示方法
Type and its indication



订货说明及选用须知
Order instructions and use notes

1. 订货时请注明型号规格并请提供闸孔中心至启闭机平台高度尺寸；

2. 闸门门体及门框材料一般用灰铸铁或球墨铸铁制造；

3. 非标规格的闸门，我公司可为用户提供预埋件详图；

4. 本厂供货不含任何预埋件，需要时请注明。

5. 暗杆式闸门宜装于风景区或道路中间的窨井内，此种闸门自带启闭装置，无专用启闭机。
1. Ordering, please specify model specifications and provide the gate hole center to hoist platform height dimension;

2. Gate door and door frame material or the general milling of cast iron with gray cast iron;

3. Non-standard specifications of the gate, our company can provide users with embedded parts detailing;

4. Our supply does not contain any embedded parts, necessary, please specify.

5. Dark rod gate should installed in the middle of the Yin Jing scenic or road within the opening and closing of this gate own devices, without special hoist.

CBZ型不锈钢渠道闸门

TYPE-CBZ stainless steel head gate

产品简介 Introductions

CBZ型渠道闸门广泛应用于给排水工程，用于截断渠道内的水流，其工作介质为常温下的原水、清水、污水。

CBZ-type channels are widely used in water supply and drainage gates, cut off channels for the flow, the working medium to room temperature, raw water, water, sewage.

特点 Features

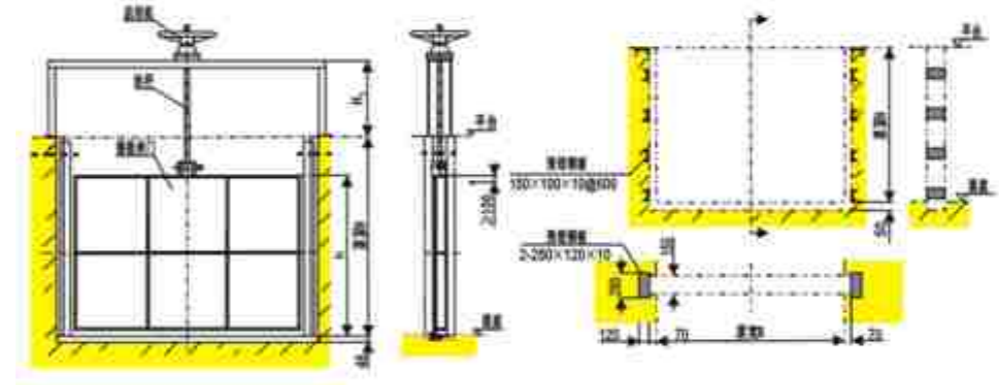
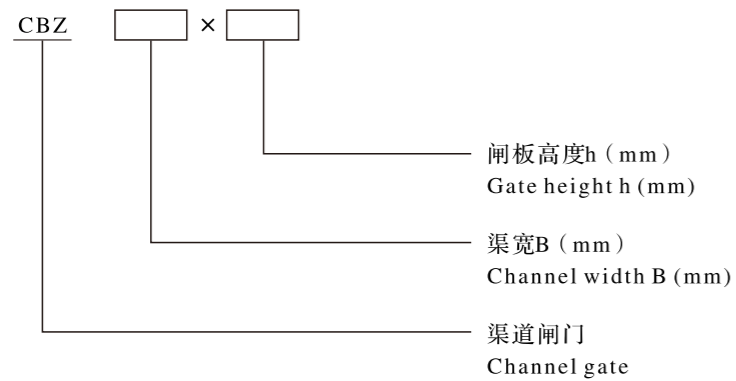
1. 闸门的过水断面与渠道等宽，超宽型可制成双吊点启闭；
2. 对渠道深度适应性强；
3. 橡胶密封，止水性能好；
4. 不锈钢制作，防腐性能好；
5. 手动启闭操作轻便，对偏远地区无电使用更方便。

1. Gate cross section and the channel width, wide type can be made into twin-lift hoist;
2. On the channel depth of adaptability;
3. Rubber seal, sealing performance;
4. Stainless steel, good corrosion resistance;
5. Manually open and close operation of light, no electricity in remote areas easier to use.

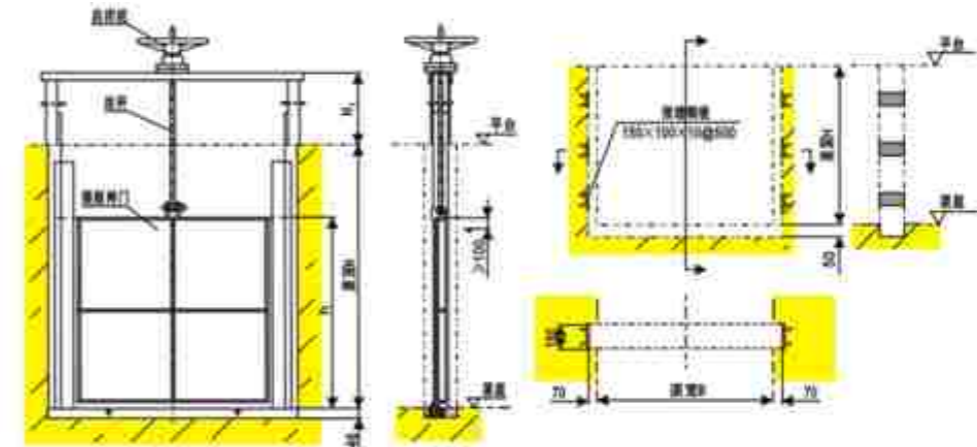


型号表示方法

Type and its indication



适用渠道宽度 > 2000mm



适用渠道宽度 $\leq 2000\text{mm}$

订货须知

Order Information

1. 订货时应提供土建结构图、工艺图等；
 2. 若需要电动启闭，订货注明；
 3. 由特殊规格要求或密封要求，订货请注明。
-
1. Order should provide civil engineering structure diagram, process diagram, etc.;
 2. If you need to power off, the order stated;
 3. By special specifications or sealing requirements, ordering please specify.

DLM型叠梁闸门 DLM-based beam gate stack

产品简介 Introductions

叠梁闸门是使用多块单独的钢制闸板，逐块纵向放入门槽内叠加成一个平面挡水机构。

结构简单，自重轻，起吊力小，搬运方便，但由于闸板与闸板之间是依靠自重达到密封止水作用的，所有整体性能较差，靠水位密封差，渗漏量大于一般的整体钢制闸门，故一般作于临时挡水或检修闸门使用。

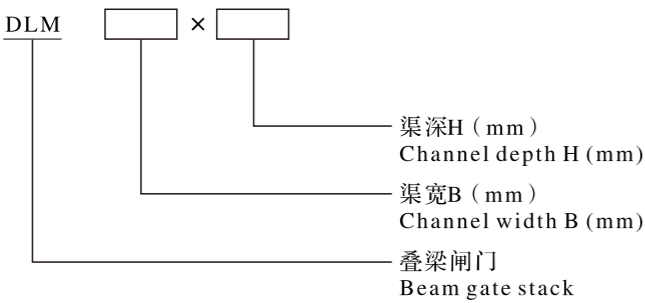
叠梁闸门吊运采用本公司特制的抓落机构，就位正确，动作灵活，操作方便。

Beam gate stack is to use multi-block separate steel gate, block-by-vertical chute into the gate stack retaining body into a plane.

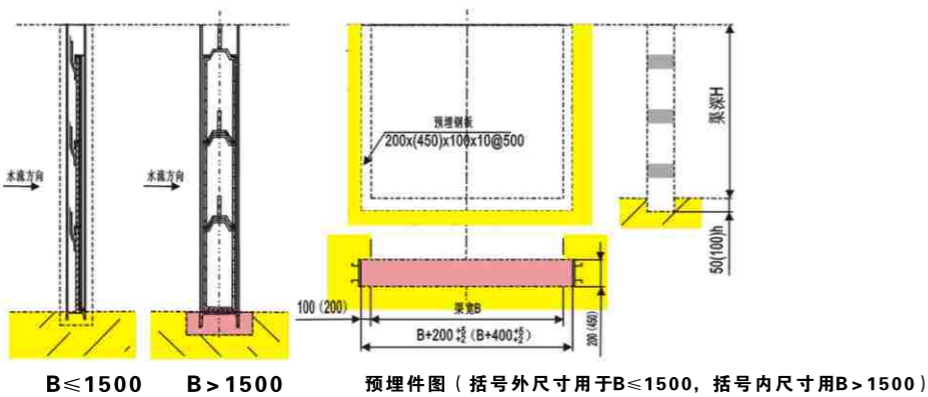
Simple structure, light weight lifting force is small, easy handling, but between the gate and the gate is to rely on gravity to seal sealing effect, the overall performance of all the poor, poor sealing by water, leakage is higher than the general Overall steel gate, so it is generally for the temporary use of water retaining or service gate.

Lifting beam gate stack using a special grasp of the company down institutions, the right place, easily, easy to operate.

型号表示方法 Type and its indication



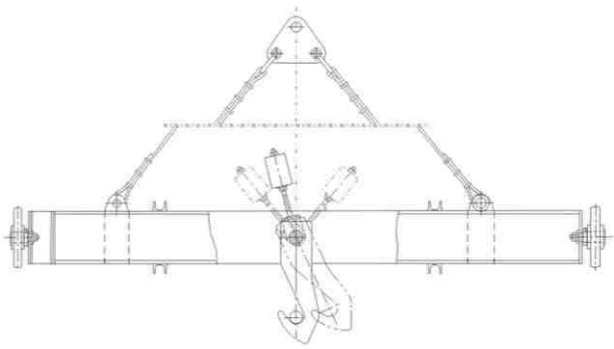
预埋件及安装图 Embedded parts and installation diagram



订货须知 Order Information

1. 订货请注明产品型号及有效水深；
 2. 请注明材质；
 3. 抓落机构是否需要也须在订货时说明。
1. Ordering please specify product model and the effective depth;
 2. Please indicate the material;
 3. Grasp whether the organization should also fall in the ordering.

QDC型自动抓落机构 QDC automatic grasping down institutions



注：该装置一般与本公司钢制闸门或平板格栅（网）配套供应，并有双吊点可供选择，图示为单吊点。

Note: The device is generally related to the company or grating steel gate (Network) matching supply and have two suspension points are available, the icon for the single lifting point.



BGZ/PZM型 平板钢制闸门
BGZ / PZM type flat steel gate

产品简介
Introductions

平板钢闸门是水利构筑物的重要组成部分，用以开启和关闭防水孔口，起着控制水位，调节流量，改变流量的作用。

本公司生产的钢制闸门主要部件的材质为普通碳钢或不锈钢，密封采用P型橡胶，闸槽可以是碳钢，也可以是铸铁，也可以是混凝土。

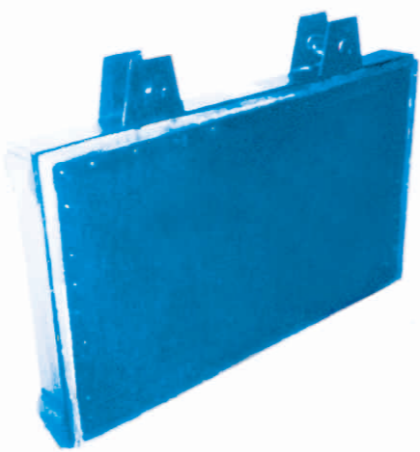
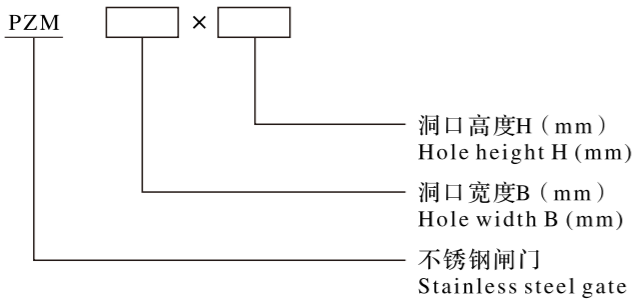
闸门强度高，重量轻，构造简单，使用轻巧，维护方便，价格低廉，使用寿命长。

Flat steel gate is an important part of hydraulic structures, to open and close the water holes, play control water level, regulate the flow, changing the role of traffic.

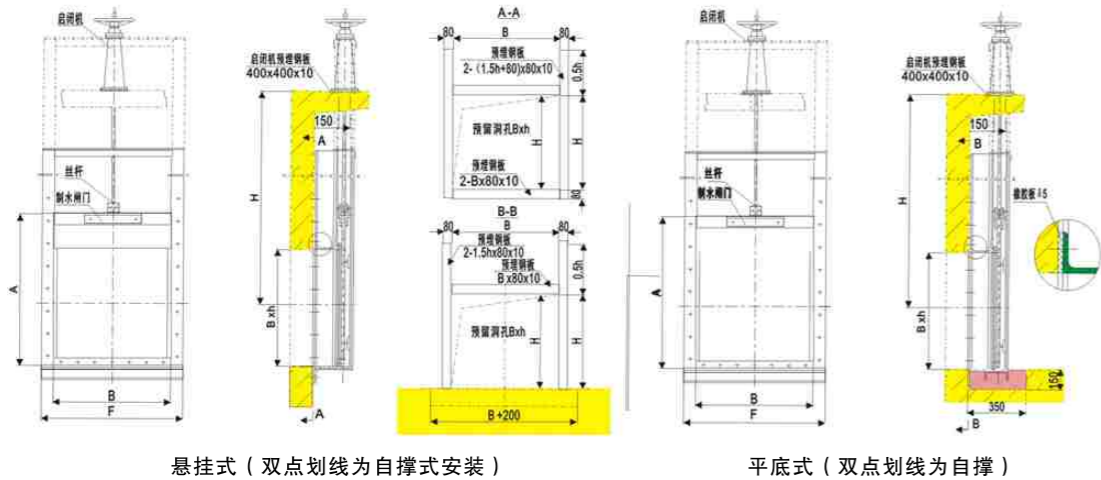
The company produces major components of the steel gate is made of carbon steel or stainless steel, sealed with P-type rubber, gate slots can be carbon steel, it can be cast iron, can also be concrete.

Gate high strength, light weight, simple structure, using lightweight, easy maintenance, low cost, long life.

型号表示方法
Type and its indication



安装及预埋件图
Installation and embedded parts of Figure

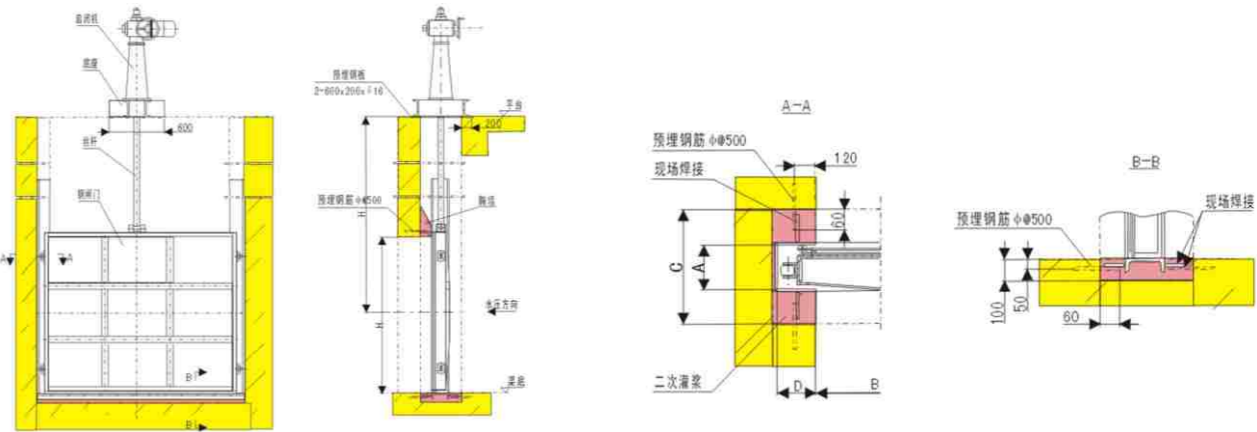
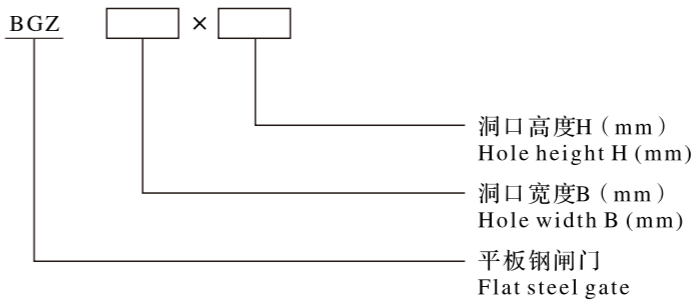


注：1. 悬挂式钢制闸门适用于四面止水，水头较低，依靠斜块楔入止水；2. 平底式钢制闸门作用同铸铁平底式闸门，但是材质为钢件，非铸铁。

Note: 1. Suspended for four steel gate seal, head low, relying on solid wedge inclined sealing block; 2. Flat steel, flat-type gate effect of the gate with the iron, but made of steel, non-iron.

公称通径 Nominal	A	B	h	F	公称通径 Nominal	A	B	h	F
300×300	350	300	300	460	1400×1400	1450	1400	1400	1560
400×400	450	400	400	560	1500×1500	1550	1500	1500	1660
500×500	550	500	500	660	1600×1600	1650	1600	1600	1760
600×600	650	600	600	760	1700×1700	1750	1700	1700	1860
700×700	750	700	700	860	1800×1800	1850	1800	1800	1960
800×800	850	800	800	960	1900×1900	1950	1900	1900	2060
900×900	950	900	900	1060	2000×2000	2050	2000	2000	2160
1000×1000	1050	1000	1000	1160	2100×2100	2150	2100	2100	2260
1100×1100	1150	1100	1100	1260	2200×2200	2250	2200	2200	2360
1200×1200	1250	1200	1200	1360	2300×2300	2350	2300	2300	2460
1300×1300	1350	1300	1300	1460	2400×2400	2450	2400	2400	2560

型号表示方法
Type and its indication



注：1. 本图为四面止水平面钢闸门安装图，若上部无需止水时可取消胸墙。

2. B > 3m且B/h > 2或B > 4m时，应采用双吊点启闭机，吊点间距为B/2。

3. 本闸门适用渠道宽度3m及以上，承受水头较高。

Note: 1. This picture shows the four sealing flat steel gate installation drawings, to cancel if the parapet when the top without sealing.

2. B > 3m and B / h > 2 or B > 4m, should use twin-lift hoist, lifting point spacing of B / 2.

3. The gate channel width of 3m and above apply, under head high.

		A	C	D
静水启闭 Hydrostatic headstock	$B < 2.5$	250	475	220
	$B \geq 2.5$	275	500	220
动水启闭 Hydrodynamic headstock	$P < 90$	275	500	220
	$90 \leq P \leq 250$	420	600	260

注：P=B·h·S（m³）

S—最高水位至闸门中心的距离（或闸门前后侧水位差）

P≥250的特大闸门或双向受压等特殊闸门，我公司可代为设计或按图加工

Note: P = B · h · S (m³)

S—highest water level to the center from the gate (or gate around the side of the water level difference)

P ≥ 250 of the large gate or two-way compression and other special gate, my company took the design or click the image processing

订货须知
Order Information

1. 订货请注明产品型号、材质及规格；

2. 请注明承受水头及洞口中心距启闭机平台距离；

3. 除表格外，还可根据用户要求设计制造任意规格的钢制闸门。
1. Ordering please specify product type, materials and specifications;

2. Please indicate the bear head and the hole center distance from the hoist platform;

3. In addition to form, can also design and manufacture of any of the user requirements specification steel gate.



DXY型 电动旋转调节堰门
Type-DXY Electric revolved adjuting weir-gate

产品简介
Introductions

DXY型电动旋转调节堰门，主要用于各类氧化沟、配水井等需要调节水位的明渠，通过调节上部溢流水量达到控制水位的作用。

该堰门具有操作方便，动作灵活，安全可靠，密封性好及维护方便等特点，可实现人工操作或自动操作两种调节方式。在严寒地区，可根据用户要求安装电加热元件以防止结冰，保证设备正常运行。

DXY-type electric rotary adjusting weir door, mainly used for various types of oxidation ditch, with wells need to adjust the water level of the channel, by adjusting the top of the overflow of water to control water level role.

The weir gate is easy to operate, flexible movement, safe, reliable, good seal and easy maintenance, enabling manual or automatic adjustment of two ways. In cold areas, can be customized installation of electric heating elements to prevent icing, to ensure normal operation.

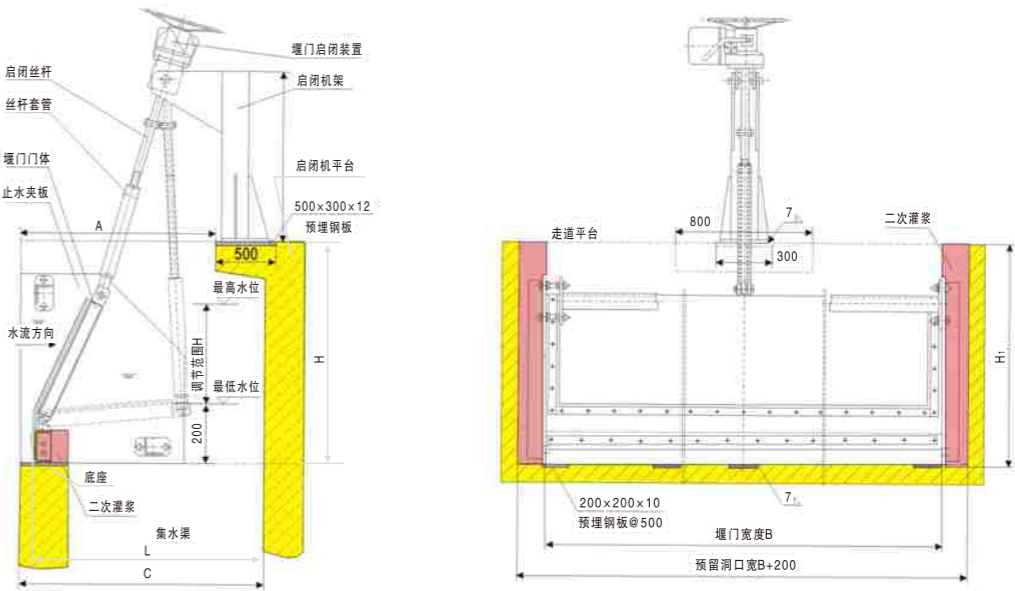
工作原理及构造
The principle and structure

主要由钢制结构组成，具体由电动装置、门体、滑板、门座及挡渣堰等。

密封效果好，几乎到达“0”泄露状态，适用宽度可达5米以上，但调节水位一般在800mm以下，特别适用于交替运行的氧化沟排水，或大型配水井配水，配套专业启闭装置，仅需注明手动或电动即可，无须另外选用启闭机。

Composed mainly of steel structures, concrete from the electrical device, door, slide, door holders and other slag dam.

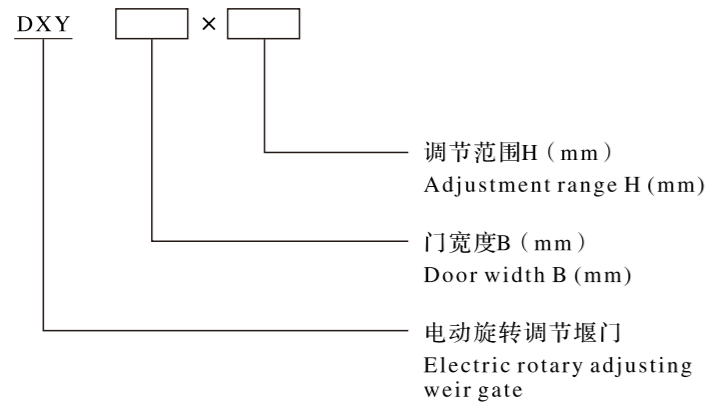
Good sealing effect, almost to "0" leaking state, for up to 5 meters wide, but adjust the water level is generally 800mm below, especially for alternate operation of the oxidation ditch drainage, or large wells with water distribution, supporting specialized lifting device, you can only specify manual or electric, no other choice hoist.



尺寸 (Size)	参数 (Parameter)										
H	300	350	400	450	500	550	600	650	700	750	800
A	450	480	520	560	600	640	670	710	750	790	830
Cmin	550	610	670	730	790	850	900	950	1000	1050	1100
B	1000~8000										
功率 (Power)	B≤3000mm时, N=0.37kW; B≥3000mm时, N=0.55kW										

型号表示方法

Type and its indication



订货须知

Order Information

1. 注明堰门的型号、规格及数量；
 2. 防腐要求需特别注明；
 3. 订货需给出堰门底座距启闭机平台的垂直距离H和水平距离L。
1. Specify weir door models, specifications and quantity;
 2. Antiseptic be specified by the requirements;
 3. Order be given from the base of weir gate hoist platform level of the vertical distance from the H and L.

DY型铸铁镶铜调节堰门

Type-DY Cast-iron copper-inlaid adjusting weir-gate

产品简介 Introductions

本产品一般安装在沉淀池、曝气池和配水井，用于调节水位和流量。向上为关，向下为开，堰门迎水面安装。

堰门主要由堰框，堰板和楔紧装置等部件组成。

此系列派生产品为不锈钢调节堰门。

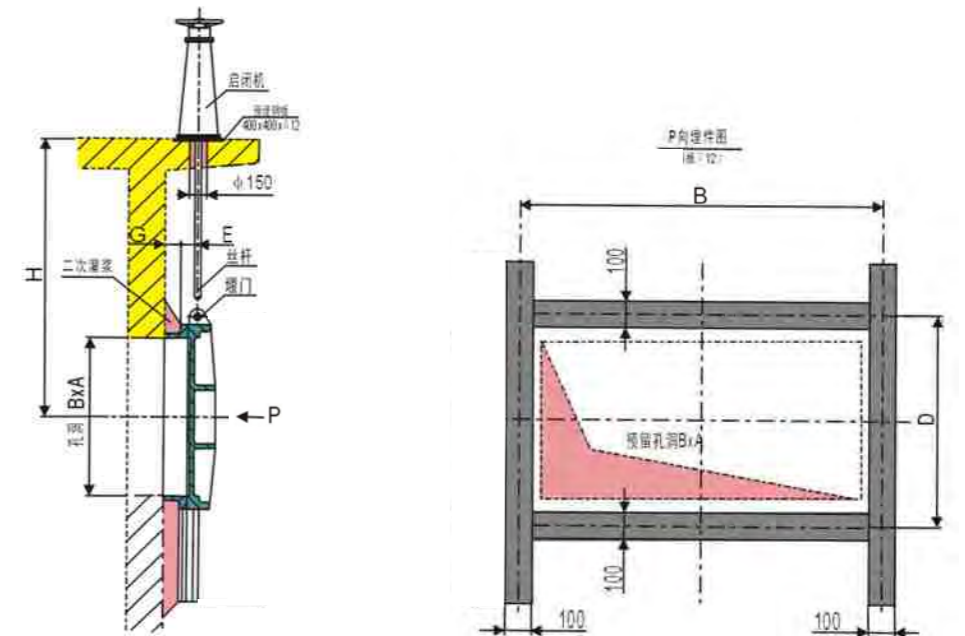
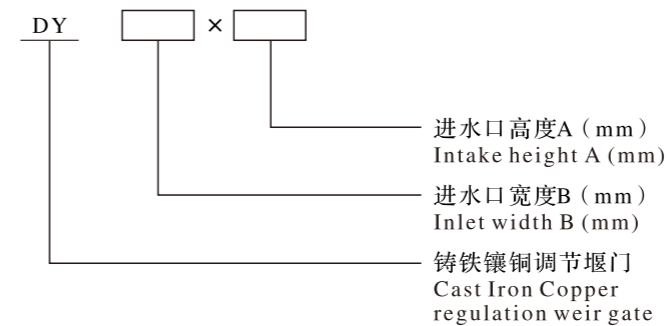
The products are generally installed in the sedimentation tank, aeration tank and the distribution well, for regulating the water level and flow. Up for the pass, down to open the door welcoming the weir installation.

Mainly by the weir box weir gate, weir plate and wedge tight devices components.

This series of derivative products for the stainless steel adjusting weir door.

型号表示方法

Type and its indication

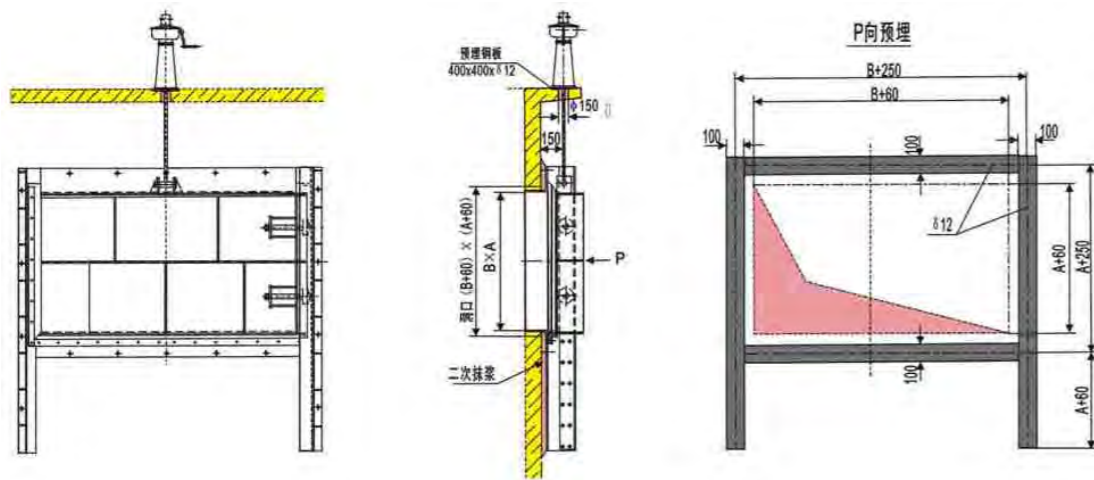
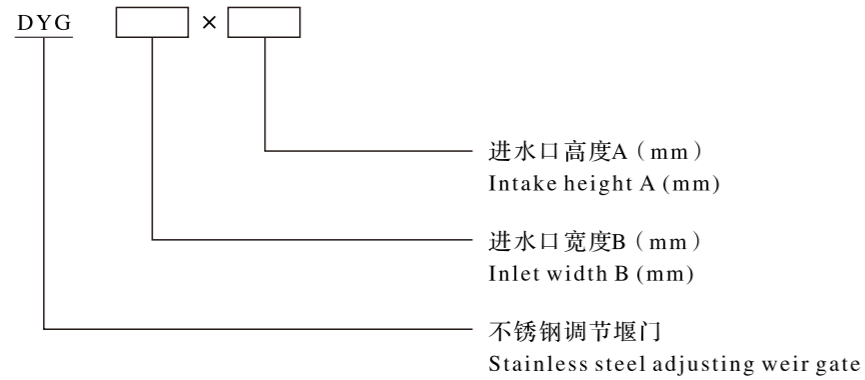


不锈钢调节堰门

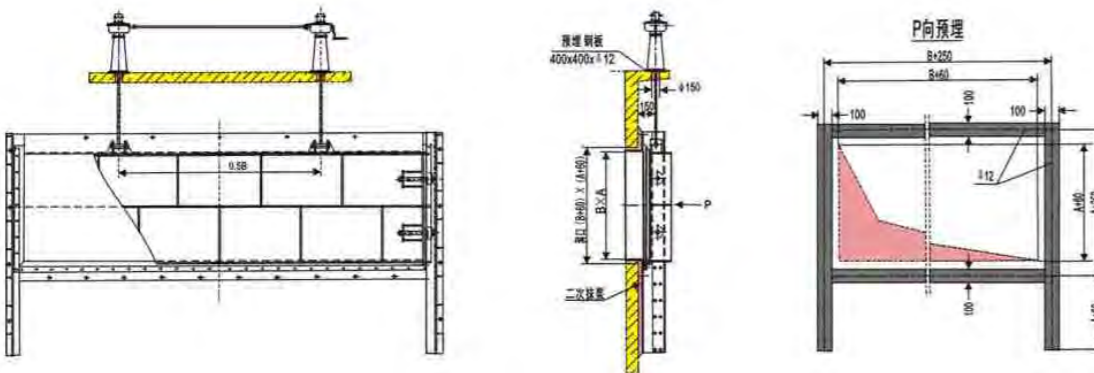
Stainless steel adjusting weir gate

型号表示方法

Type and its indication



适用于 $B \leq 2500$ ，采用单吊点启闭机（手动或电动），可不设预埋件，采用膨胀螺栓固定



适用于 $B > 2500$ ，采用双吊点启闭机（手动或电动），可不设预埋件，采用膨胀螺栓固定

安裝尺寸

Installation dimensions

铸铁镶铜堰门的安装及外形尺寸全部参照铸铁镶铜闸门，两种闸门所有尺寸及规格全部相同，只是一个为上开，一个是下开。

不锈钢调节堰门的安装尺寸由图中的尺寸派生。

Cast Iron Copper weir door installation and dimensions all reference Cast Iron Copper gate, two gates of all sizes and specifications of all the same, only one is on the open, one is open.

Regulate the installation of stainless steel weir gate size derived from the size of the figure.

订货须知

Order Information

1. 订货时注明产品型号及规格；
 2. 提供平台至洞口中心的尺寸H；
 3. 铸铁堰门的具体规格参照铸铁镶铜闸门，如有特殊规格，可专门设计制作。
-
1. When ordering product type and specifications;
 2. To provide a platform to the center hole size H;
 3. Iron weir gate specifications refer Cast Iron Copper gate, if any special specification can be specially designed.



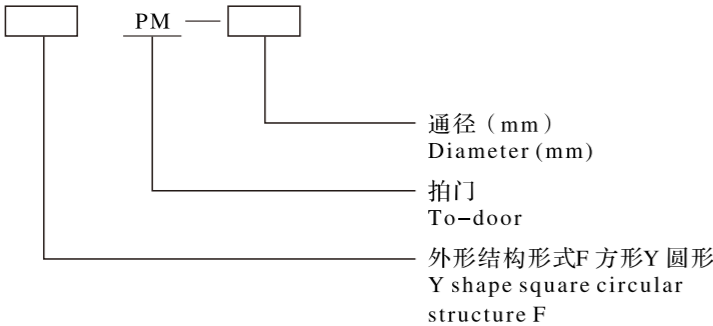
PM型拍门
Type-PM-to-door

用途
Application

适用于给排水及污水处理工程中的各种管道、水泵的出水管，泵站中的出流井和水渠中作溢流、止回作用，也可用作各种竖井井盖；仅用于单向水流的方形、矩形或圆形出口。结构简单，工作可靠，无须人力操作，可用法兰连接，也可用预埋件固定。

Apply to the drainage and sewage treatment works in a variety of channels, pumps the outlet pipe, pumping station in the flow of wells and canals to overflow, just back role, but also can be used as the covers of various shaft; only one-way flow in a square, rectangular or round exit. Simple structure, reliable operation without manpower, available flange connections can also be embedded parts fixed.

型号表示方法
Type and its indication



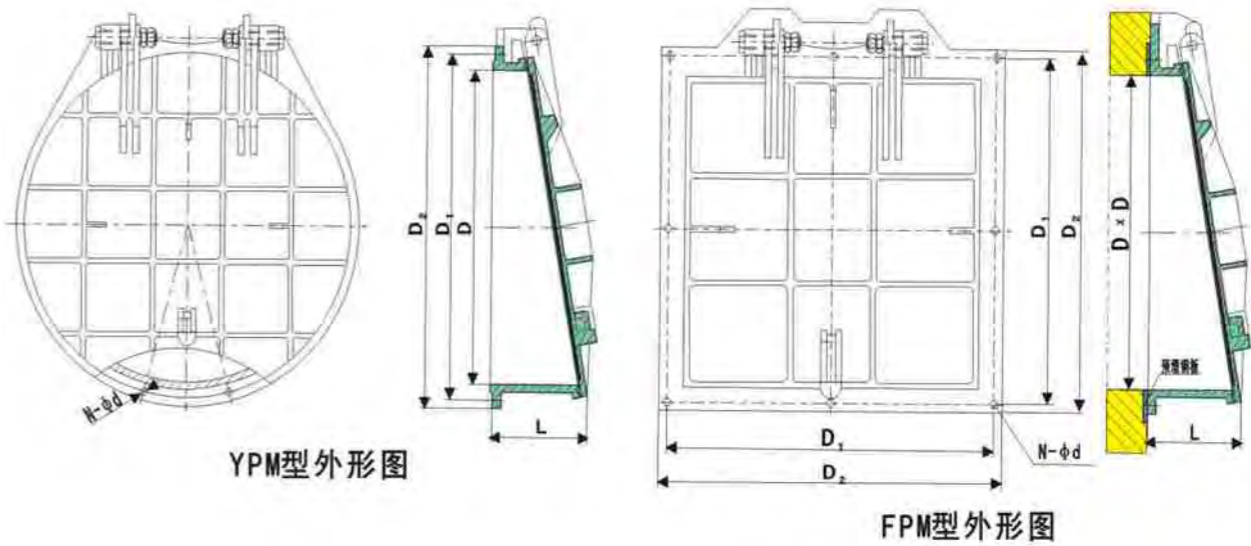
结构特点
Structural characteristics

本公司生产的拍门为圆形YPM和方形FPM两种，均采用双铰链式，具有：

1. 结构简单、工作可靠，不需人力操作。
2. 铸铁结构，加装配重块，可调节工作水位。
3. 配有标准法兰（GB4216-84 PN0.25Mpa）可与各种管道连接使用，也可与预埋件连接固定。
4. 逆向承受水头不超过8m。

The company produces-to-door for the round and square FPM YPM two are double hinged, with:

1. Structure is simple, reliable operation without using manpower.
2. Cast iron structure, plus assembly weights, adjustable work level.
3. Equipped with a standard flange (GB4216-84 PN0.25Mpa) can be used with various pipe connections can also connect with the embedded parts fixed.
4. Reverse bear head of not more than 8m.



PM型拍门基本参数
Basic parameters of PM-type-to-door

通径 DN	D	D ₁	D ₂	L	n-Φd
Φ300	300	395	435	180	12-Φ23
Φ400	400	495	540	230	16-Φ23
Φ500	500	600	645	280	20-Φ23
Φ600	600	705	755	330	20-Φ26
Φ700	700	810	860	330	24-Φ26
Φ800	800	920	975	330	24-Φ30
Φ900	900	1020	1075	350	24-Φ30
Φ1000	1000	1120	1175	380	28-Φ30
Φ1200	1200	1320	1375	420	32-Φ30
Φ1400	1400	1520	1575	480	36-Φ30
Φ1500	1500	1620	1675	510	36-Φ34
□300	300	390	460	200	4-Φ18
□400	400	520	590	230	4-Φ18
□600	600	765	835	330	8-Φ23
□800	800	950	1050	330	8-Φ23
□1000	1000	1150	1250	380	8-Φ23

注：拍门密封可根据工艺要求提供橡胶密封，铸铁密封或铜密封产品。
Note: Making the door seal can process requests for rubber seal, iron seal or copper seal products.

订货须知

Order Information

1. 注明材质（铸铁或钢制），不注明时按铸铁生产；
2. 逆向承受水头，不超过8m，超过时务必注明水头；
3. 安装时最好采用法兰连接，当采用预埋件连接时预埋件的设置请参照铸铁镶铜闸门样本中的预埋钢板形式；
4. 圆拍门法兰标准为GB/T9119-2000，PN0.25MPa

1. Specified materials (cast iron or steel), not marked by iron production time;
2. Reverse bear head, not more than 8m, than be sure to specify when the head;
3. Installation with flange connection is best, when using embedded parts connected set of embedded parts, please refer Cast Iron Copper embedded steel gate in the sample form;
4. Circle-to-door flange standard GB/T9119-2000, PN0.25MPa



HF型滑阀

Type-HF Silde valve

用途

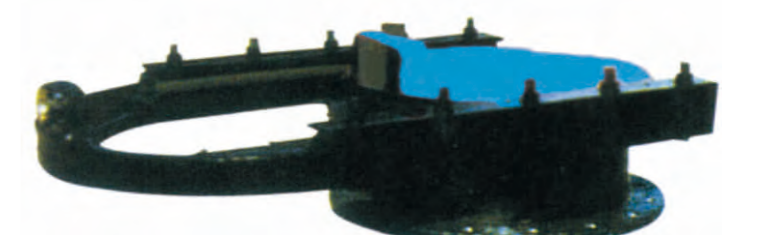
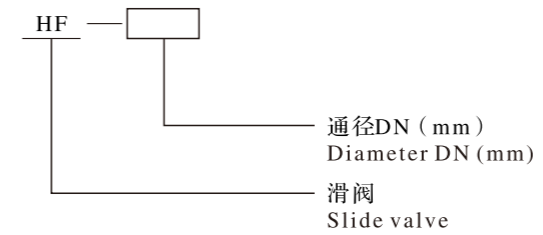
Application

滑阀可安装于各种水池或水井的管道上，功能同于铸铁镶铜闸门，滑阀为手动操作，单向受压，密封材为铜合金，耐腐、耐磨，开启时有指针，直觉好。

Slide valve can be installed on a variety of pool or well pipe, the function of copper with the Cast Iron gate, slide valve for manual operation, one-way compression and sealing materials as copper alloys, corrosion, wear, turned on a pointer, good intuition.

型号表示方法

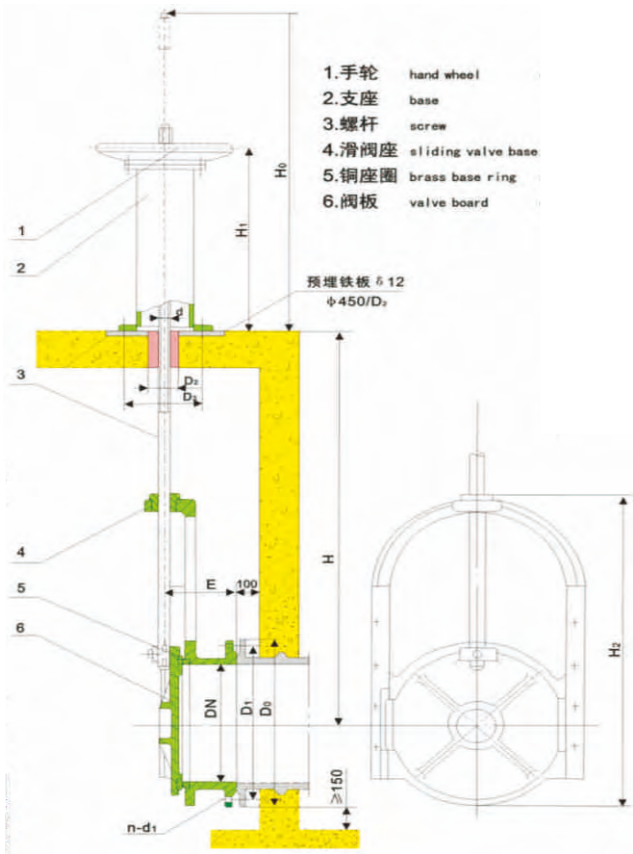
Type and its indication



外形及尺寸

Shape and size

型号 Model 尺寸 Size	HF300	HF400	HF600	HF800	HF1000	HF1200
DN	Φ300	Φ400	Φ600	Φ800	Φ1000	Φ1200
D0	Φ440	Φ565	Φ780	Φ1015	Φ1250	Φ1390
D1	Φ400	Φ515	Φ725	Φ950	Φ1120	Φ1330
D2	Φ120	Φ120	Φ?120	Φ150	Φ150	Φ150
D3	Φ350	Φ350	Φ350	Φ350	Φ360	Φ360
H	1500 ~ 5000			2000 ~ 5000		
H0	1380	1480	1680	2030	2330	2430
H1	885	885	885	905	905	905
H2	865	1065	1490	2225	2305	2600
E	242	254	295	400	345	355
D	Φ32	Φ32	Φ44	Φ44	Φ44	Φ44
n-d1	12-Φ23	12-Φ23	20-Φ30	24-Φ30	28-Φ30	32-Φ30



订货须知
Order Information

1. 订货应注明型号规格，并注明H，不注明按最短尺寸；
2. 本设备包含手轮启闭装置，若用户需改用手电两用启闭机请参照相关样本，并注明；
3. 本设备与穿墙管连接法兰尺寸见上表，本公司也可按用户标准生产，孔布置同暗杆闸门。

1. Order should indicate the type specification, and indicate the H, does not indicate the shortest dimension;

2. This equipment includes hand wheel lifting device, if the user needs to switch to torch two hoist Refer to the relevant samples, and indicate;

3. The device is connected to the flange with the wall dimensions see table above, the Company in accordance with user standards of production, with rising stem gate hole layout.



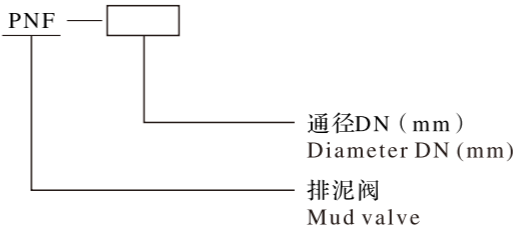
PNF型排泥阀
Type-PNF Mud valve

用途
Application

排泥阀又名盖阀。广泛应用于自来水公司各类水池或其他给排水处理工程的各类沉淀池中用于排放池底的泥砂污物等的沉淀物，也可装在工作介质为水、油、气等管路中作截流用，一般与启闭机配套使用。

Also known as Mud valve cover valve. Widely used in various types of pool water company to water treatment works or other types of sedimentation tank for discharge of sediment contaminants such as bottom sediments, can also be installed in the working medium is water, oil, gas and other pipeline used for closure, general and stop machines.

型号表示方法
Type and its indication

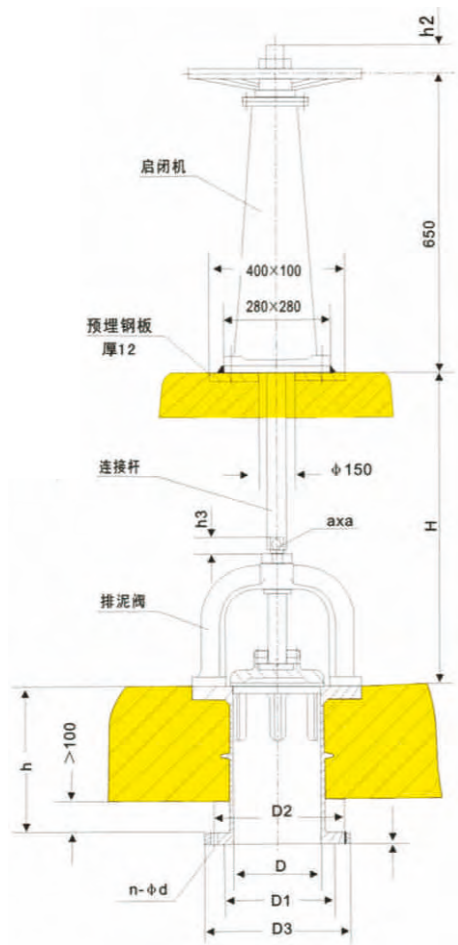


特点
Features

1. 阀盖自带螺杆，水浅时可直接用手柄操作。
 2. 阀板成锥拱形，自带导向，开启操作力小。
 3. 螺杆及密封面采用锡青铜，耐腐、耐磨。
 4. 选用全自动启闭装置，可进入微机控制。
 5. 介质温度≤50℃，工作水深≤10m。
1. Valve cover comes with screw, shallow may directly handle operation.
 2. Valve plate into a cone arch, built-oriented, open the operating force.
 3. Screw and the sealing surface is tin bronze, corrosion and wear.
 4. Use automatic lifting device, can enter the computer control.
 5. Medium temperature ≤ 50 ℃, working depth ≤ 10m.

尺寸参数
Size parameters

参数 Parameter	型号 Model	PNF150	PNF 200	PNF 300	PNF 400	PNF 500
D1 (mm)		206	256	362	466	572
D2 (mm)		247	299	414	524	639
D3 (mm)		285	342	464	582	706
h (mm)		200	300	300	450	450
h1 (mm)		3	3	4	4	4
h2 (mm)		30	30	45	60	60
h3 (mm)		45	45	45	60	60
n-Φd (mm)		8-Φ18	8-Φ18	10-Φ21	12-Φ28	12-Φ28
a (mm)		22	22	25	25	28



订货须知
Order Information

1. H由用户自定，订货时应注明，不注明按3m供货。
 2. 本公司排泥阀均配手轮启闭机。如需配电动启闭机应特殊订货。
 3. 图中H及法兰部位尺寸，可根据用户需要供货。
 4. 如需订购平底盖阀、提拔阀或其它阀门，参见相关样本。
1. H determined by the user, orders should be noted, does not indicate the supply by 3m.
2. The company mud valves with hand wheel hoist. For electric hoist shall be equipped with a special order.
3. Graph H and the flange parts of size, can supply according to user needs.
4. For ordering flat cap valve lift valve or other valves, see the relevant samples.



大型水利闸门
Large hydraulic gate

用途与性能
Usage and Performance

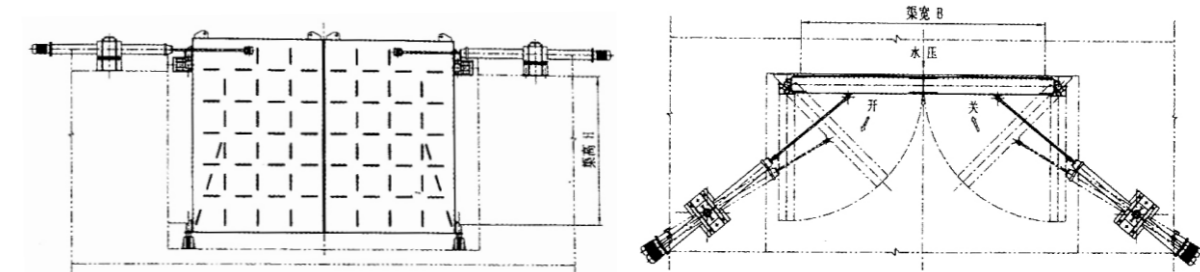
本钢闸门用于各种水利工程中，采用电液推杆的推力来进行闸门的开启与闭合，结构简单，性能可靠，外形尺寸较大，可制成转式、横拉式、可单扇也可双扇。

本钢闸门用于各种水利工程中的河道，用于泄洪、排涝，用卷扬机构来进行闸门的开启和关闭，安装方便，工作可靠，当跨度较大时可设计成对拉式。可根据具体情况提供详细资料。

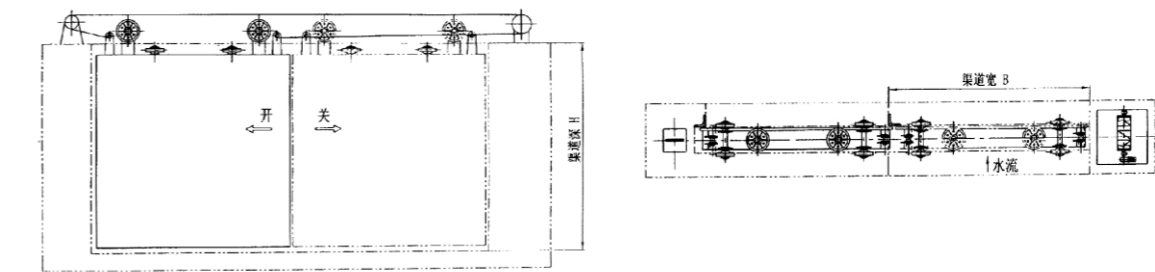
Benxi Iron and Steel Gate is used in all kinds of hydraulic engineering. It uses the push of electro-hydraulic push rod to open and close the gate. It has simple structure, reliable performance and large size. It can be made into rotary, horizontal pull, single or double fans.

Benxi Iron and Steel Gate is used in all kinds of water conservancy projects. It is used for flood discharge and drainage. The hoisting mechanism is used to open and close the gate. It is easy to install and reliable to work. When the span is large, it can be designed as a pair pull type. Detailed information can be provided according to specific circumstances.

电液推杆闸门安装及埋件图
Installation and Embedded Drawing of Electro-hydraulic Push-rod Gate



横拉式钢闸门安装及埋件图
Installation and Embedded Drawing of Cross-pull Steel Gate

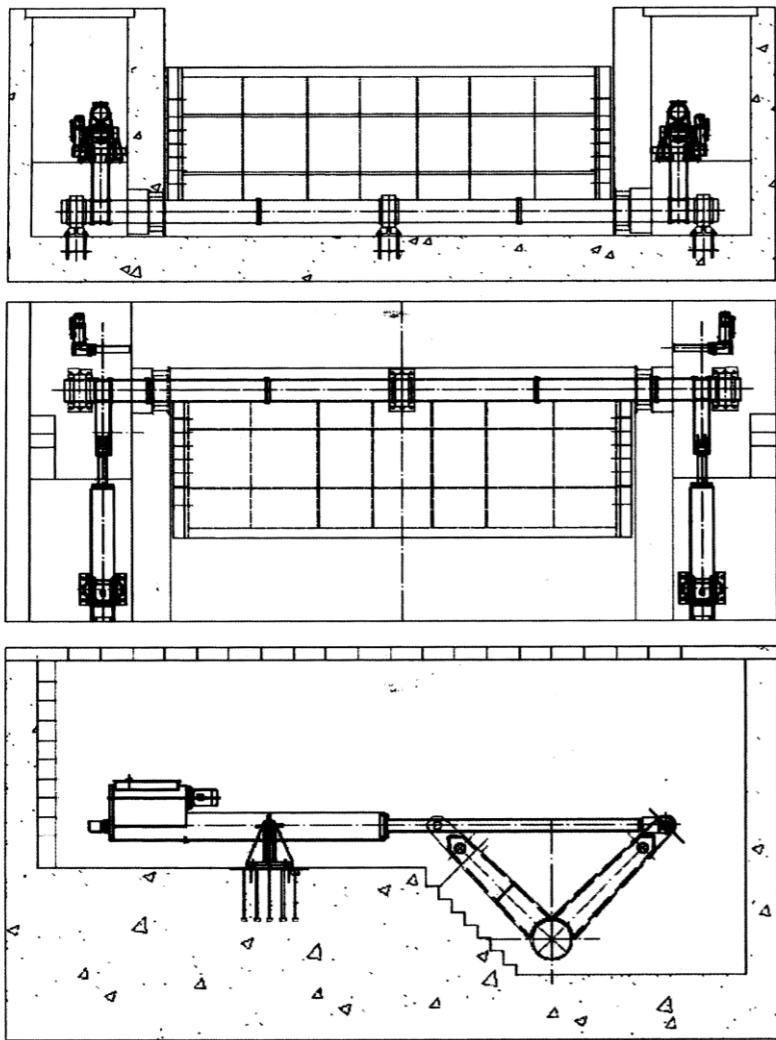


系列产品一：钢坝—大跨度底轴驱动翻板闸
Series I: Steel Dam-Large Span Bottom Shaft Driven Turn-over Sluice

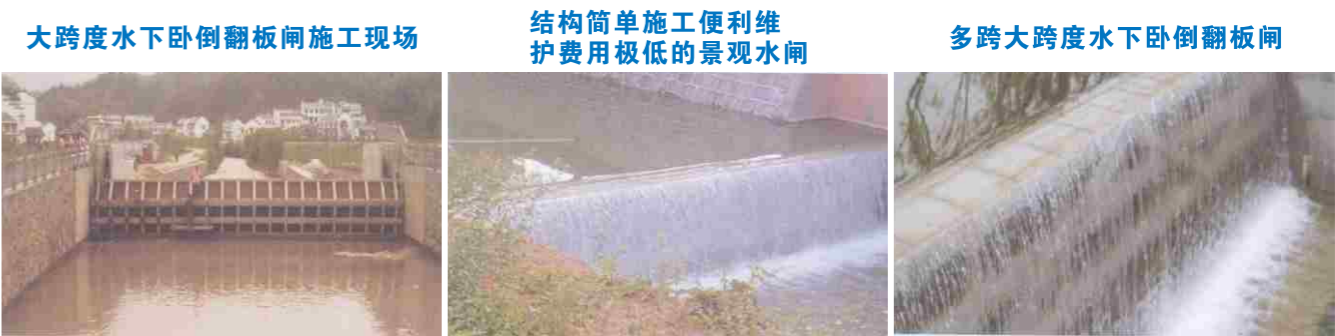


特点：大跨度底轴驱动翻板闸：全封闭的启闭机室，景观效果好，维护方便
多跨度液压翻板闸：可以适用双向挡水工

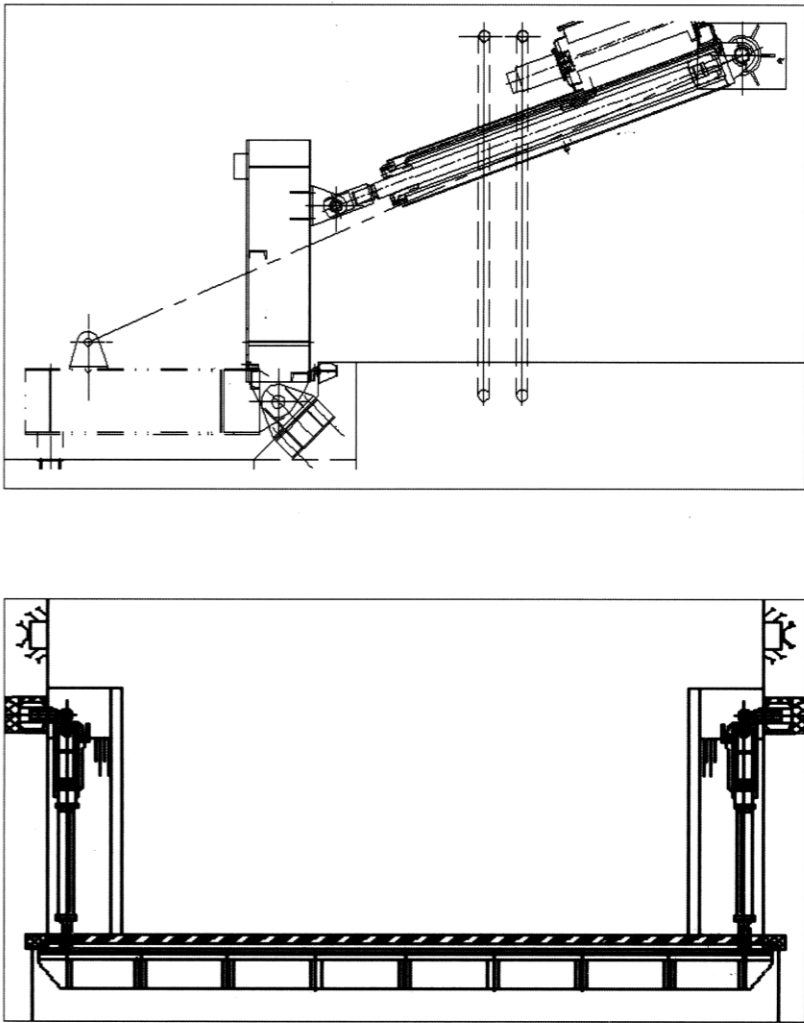
图纸外形
Drawing outline



系列产品二：水下卧倒翻板闸
Series 2: Underwater horizontal overturning gate



技术参数及外形尺寸
Technical parameters and dimensions



技术参数及外形尺寸

Technical parameters and dimensions

QYY-QD系列水下卧倒翻板闸启闭机外形安装尺寸（一）（单位：mm）

启闭机型号	L	L1	H	B	H1	R	Φ	Φ1
QYY-RY63KN-S-A	250	根据具体 水工布置及 闸门高度确定	325	75	60	60	299	50
QYY-RY100KN-S-A	300		350	85	60	65	325	55
QYY-RY150KN-S-A	400		380	95	70	80	351	60
QYY-RY200KN-S-A	430		380	105	80	90	351	70
QYY-RY250KN-S-A	450		400	115	80	100	377	80
QYY-RY320KN-S-A	500		400	125	90	110	402	100
QYY-RY400KN-S-A	550		450	135	100	120	426	110
QYY-RY500KN-S-A	600		480	145	110	125	450	120
QYY-RY600KN-S-A	650		525	155	110	135	500	130

QYY-QD系列水下卧倒翻板闸启闭机外形安装尺寸（二）（单位：mm）

启闭机型号	L	H	H1	H2	B	R	R1	Φ	Φ1	Φ2
QYY-RY63KN-S-B	250	325	60	60	75	60	60	299	50	50
QYY-RY100KN-S-B	300	350	60	60	85	65	65	325	55	55
QYY-RY150KN-S-B	400	380	70	70	95	80	80	351	60	60
QYY-RY200KN-S-B	430	380	80	80	105	90	90	351	70	70
QYY-RY250KN-S-B	450	400	80	80	115	100	100	377	80	80
QYY-RY320KN-S-B	500	400	90	90	125	110	110	402	100	100
QYY-RY400KN-S-B	550	450	100	100	135	120	120	426	110	110
QYY-RY500KN-S-B	600	480	110	110	145	125	125	450	120	120
QYY-RY600KN-S-B	650	525	120	120	155	130	135	500	130	130

系列产品三：横拉门

Series 3: Horizontal door

横拉门适用于多种工况



可以讲启闭设备完全隐蔽

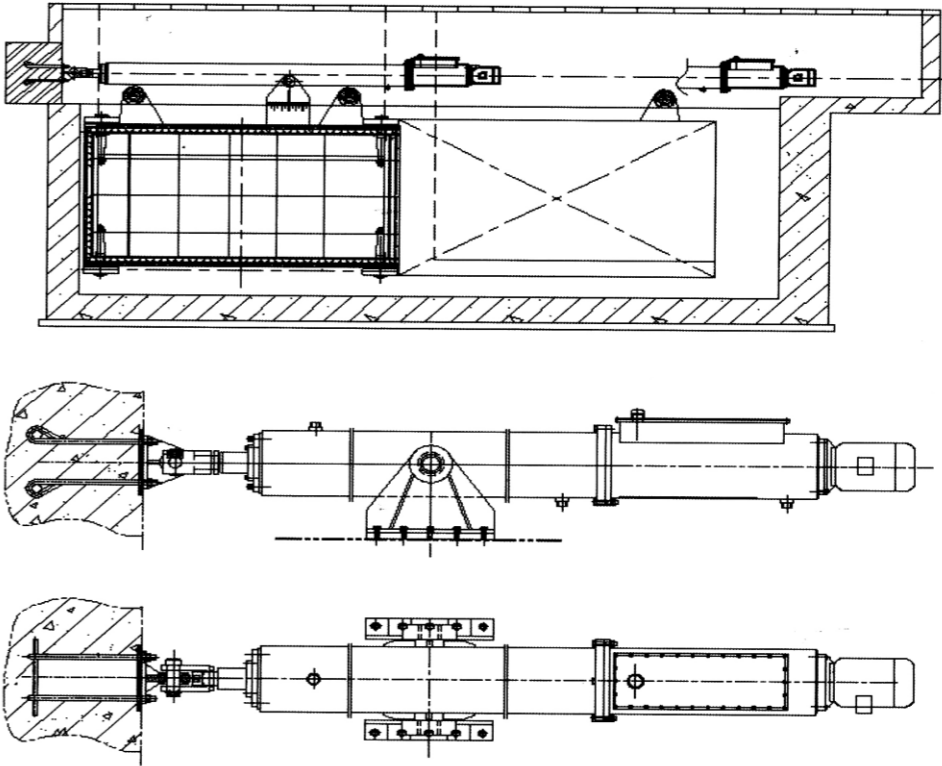


可靠的性能常在船闸中使用



技术参数及外形尺寸

Technical parameters and dimensions



QYY-HL系列水下卧倒翻板闸启闭机外形安装尺寸（二）（单位：mm）

启闭机型号	L	H	H1	H2	B	R	R1	Φ	Φ1	Φ2
QYY-HL63KN-S	250	325	60	60	75	60	60	299	50	50
QYY-HL100KN-S	300	350	60	60	85	65	65	325	55	55
QYY-HL150KN-S	400	380	70	70	95	80	80	351	60	60
QYY-HL200KN-S	430	380	80	80	105	90	90	351	70	70
QYY-HL250KN-S	450	400	80	80	115	100	100	377	80	80
QYY-HL320KN-S	500	400	90	90	125	110	110	402	100	100
QYY-HL400KN-S	550	450	100	100	135	120	120	426	110	110
QYY-HL500KN-S	600	480	110	110	145	125	125	450	120	120

注：1、表中S为设计行程；2、L1根据具体的水工布置确定；3、当S大于4m时，需加辅助支撑。

系列产品四：人字门、一字门
Series 4: Herringbone door、Herringbone door

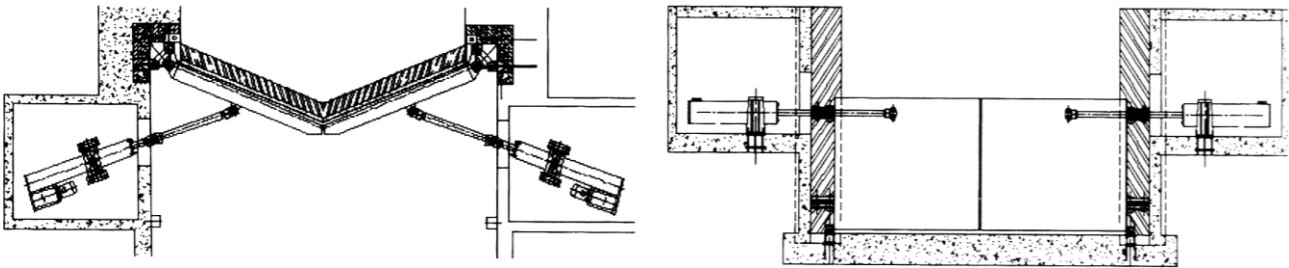
一字门工程现场



人字门一字门不仅使用在船闸
工程中同样适合各种景观工程



技术参数及外形尺寸
Technical parameters and dimensions



技术参数及外形尺寸
Technical parameters and dimensions

QYY-RY系列人字门、一字门启闭机外形安装尺寸（一）（单位：mm）

启闭机型号	L	L1	L2	L3	L4	R	B	W	Φ	Φ1
QYY-RY63KN-S-A	320	80	根据具体工程布置确定	1200	行程大于4m时，需加滚轮支撑	360	800	400	299	19
QYY-RY100KN-S-A	340	90		1250		380	800	420	351	23
QYY-RY150KN-S-A	400	100		1300		400	820	450	351	27
QYY-RY200KN-S-A	450	120		1350		450	850	480	377	33
QYY-RY250KN-S-A	500	140		1400		500	870	500	377	36
QYY-RY320KN-S-A	550	160		1450		550	900	550	426	40
QYY-RY400KN-S-A	600	180		1480		600	950	570	500	45
QYY-RY500KN-S-A	650	200		1500		650	1000	600	600	45

QRWY船闸、一字门液压启闭机设计选用技术参数及安装外形尺寸

型号	启门力 KN	闭门力 KN	活塞杆位移速度 m/min	工程行程 m	油缸内径 mm	活塞内径 mm	有杆腔计算压力 Mpa
QRWY-2×100	2×100	2×50	0.6-1.2	5	140	75	9.0
QRWY-2×125	2×125	2×63	0.6-1.2	5	150	80	10.0
QRWY-2×160	2×160	2×80	0.6-1.2	5	160	85	11.0
QRWY-2×200	2×200	2×100	0.6-1.2	5	170	90	12.0
QRWY-2×250	2×250	2×125	0.6-1.2	6	180	95	13.5
QRWY-2×320	2×320	2×160	0.6-1.2	6	200	105	14.0
QRWY-2×400	2×400	2×200	0.6-1.2	6	220	120	15.0
QRWY-2×500	2×500	2×250	0.6-1.2	6	250	140	14.5
QRWY-2×630	2×630	2×320	0.5-1.0	8	280	160	15.0
QRWY-2×800	2×800	2×400	0.5-1.0	8	300	170	16.5
QRWY-2×1000	2×1000	2×500	0.5-1.0	8	320	180	18.0

技术参数及外形尺寸

Technical parameters and dimensions

启闭机型号	A	B	C	D	E	n/Φ	a	b	c	d	e	R	地脚螺栓 GB/T799-
QRWY-2×100	775+S	根据水工布置要求定	240	380	145	6-Φ22	160	70	55	55	80	80	6-M20×400
QRWY-2×125	795+S		250	390	150	6-Φ22	178	78	65	60	90	90	6-M20×400
QRWY-2×160	830+S		260	430	135	8-Φ22	196	86	70	70	100	100	8-M20×400
QRWY-2×200	880+S		270	450	140	8-Φ22	215	92	80	80	100	100	8-M20×400
QRWY-2×250	945+S		280	480	145	8-Φ26	235	102	90	90	120	120	8-M24×500
QRWY-2×320	1020+S		300	530	150	8-Φ26	258	110	100	100	133	130	8-M24×500
QRWY-2×400	1110+S		320	580	120	10-Φ26	282	120	110	110	148	140	10-M24×500
QRWY-2×500	1205+S		340	610	135	10-Φ26	304	135	110	110	164	150	10-M24×500
QRWY-2×630	1315+S		360	660	150	10-Φ32	332	150	120	120	178	165	10-M30×500
QRWY-2×800	1440+S		390	720	165	10-Φ32	365	165	140	140	194	180	10-M30×500
QRWY-2×1000	1575+S		420	800	180	10-Φ38	395	185	160	160	215	200	10-M36×630

QYY-RY系列人字门、一字门启闭机外形安装尺寸（二）（单位：mm）

启闭机型号	L	L1	L2	A	H	B	W	Φ	Φ1
QYY-RY63KN-S-B	320	80	根据具体工程布置确定	330	360	800	400	299	19
QYY-RY100KN-S-B	340	90		380	380	800	420	351	23
QYY-RY150KN-S-B	400	100		380	400	820	450	351	27
QYY-RY200KN-S-B	450	120		400	450	850	480	377	33
QYY-RY250KN-S-B	500	140		400	500	870	500	377	36
QYY-RY320KN-S-B	550	160		450	550	900	550	426	40
QYY-RY400KN-S-B	600	180		530	600	950	570	500	45
QYY-RY500KN-S-B	650	200		580	650	1000	600	600	45

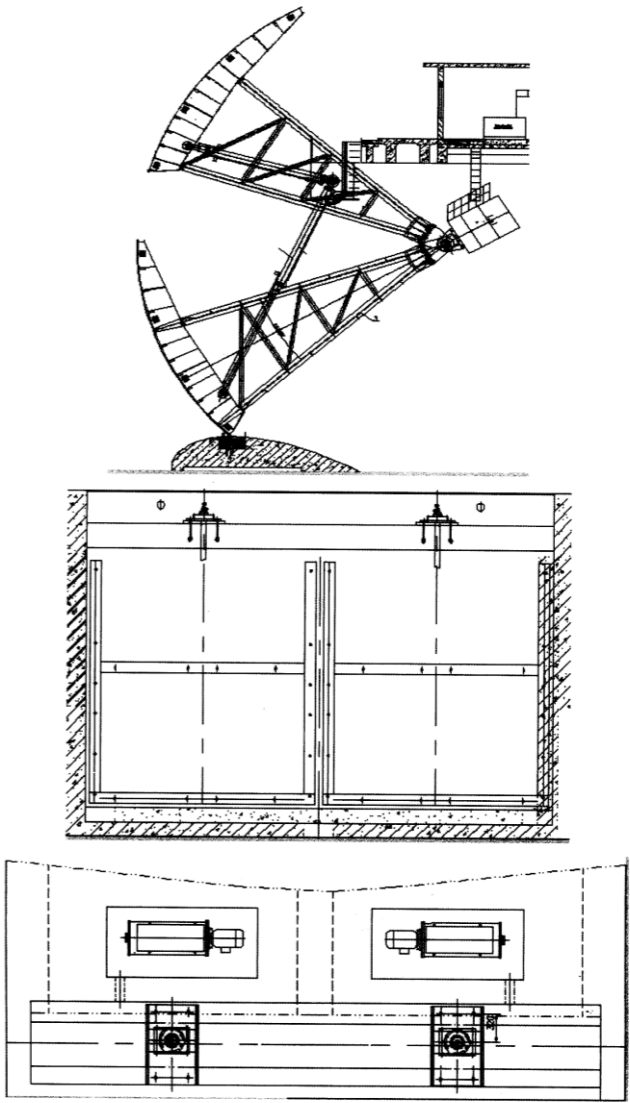
系列产品五：平面直升门弧形门

Series 5: Planar helicopter arc door



技术参数及外形尺寸

Technical parameters and dimensions



QYY-PZ系列平面直升门启闭机外形安装尺寸（一）（单位：mm）

启闭机型号	L	H0	H1	B	B1	W	W1	n	Φd	Φd1
QYY-PZ50KN-S-C	250	根据具体水工布置及闸门高度确定	根据闸室顶高程确定	185	150	280	230	4	152	16
QYY-PZ80KN-S-C	300			215	180	300	260	4	168	19
QYY-PZ100KN-S-C	400			240	195	320	280	4	194	22
QYY-PZ150KN-S-C	430			300	250	400	335	4	219	27
QYY-PZ200KN-S-C	450			350	300	500	420	6	245	30
QYY-PZ250KN-S-C	500			400	350	550	480	6	273	33
QYY-PZ320KN-S-C	550			450	400	600	520	6	299	37
QYY-PZ400KN-S-C	600			500	450	650	580	6	325	40
QYY-PZ500KN-S-C	650			550	500	700	625	6	351	45

注：表中S为设计行程。

QYY-PZ系列平面直升门启闭机外形安装尺寸（二）（单位：mm）

启闭机型号	L	L1	B	H	R	Φd	Φd1
QYY-PZ50KN-S-Z	250	根据具体水工布置及闸门高度确定	75	60	60	152	50
QYY-PZ80KN-S-Z	300		85	60	65	168	55
QYY-PZ100KN-S-Z	400		95	65	70	194	60
QYY-PZ150KN-S-Z	430		105	65	80	219	70
QYY-PZ200KN-S-Z	450		115	70	90	245	80
QYY-PZ250KN-S-Z	500		125	70	100	273	90
QYY-PZ320KN-S-Z	550		135	80	110	299	100
QYY-PZ400KN-S-Z	600		145	80	120	325	110
QYY-PZ500KN-S-Z	650		155	90	130	351	120

QYY-HX系列深孔弧门启闭机外形安装尺寸（单位：mm）

启闭机型号	L	L1	B	H	H1	R	Φd	Φd1
QYY-HX100KN-S	300	根据具体水工布置及闸门高度确定	90	350	60	70	325	60
QYY-HX150KN-S	400		100	380	70	80	351	80
QYY-HX250KN-S	430		110	400	85	95	377	90
QYY-HX320KN-S	450		125	435	100	105	402	100
QYY-HX400KN-S	500		135	450	110	125	426	110
QYY-HX500KN-S	550		150	475	120	140	450	120
QYY-HX630KN-S	600		175	530	130	150	500	140
QYY-HX800KN-S	650		200	580	140	160	560	160

注：表中S为设计行程。

QHLY露顶式弧门启闭机设计选用技术参数及安装外形尺寸（单位：mm）

型号	启门力 KN	工程行程 m	活塞杆位移速度 m/min	油缸内径 mm	活塞杆直径 mm	计算压力 Mpa
QHLY-2×100	2×100	3	1.0-1.5	120	75	14.5
QHLY-2×125	2×125	3	0.8-1.5	130	78	14.7
QHLY-2×160	2×160	3.5	0.8-1.5	140	80	15.4
QHLY-2×200	2×200	3.5	0.8-1.2	160	95	15.4
QHLY-2×250	2×250	4.5	0.8-1.2	180	110	15.7
QHLY-2×320	2×320	4.5	0.6-1.2	200	125	16.7
QHLY-2×400	2×400	5.5	0.6-1.2	220	140	17.7
QHLY-2×500	2×500	5.5	0.6-1.2	250	160	17.3
QHLY-2×630	2×630	6.5	0.5-1.0	280	180	17.4
QHLY-2×800	2×800	6.5	0.5-1.0	300	185	18.3
QHLY-2×1000	2×1000	8	0.5-1.0	330	200	18.5

技术参数及外形尺寸

Technical parameters and dimensions

型号双吊点	A		B	C	H		D	D0	E	F	G	Φ d1		Φ d2	a	b	c	e	R
	I型	II型			I型	II型						I型	II型						
QHLY-2 × 100	875+S	775+S	根据水工布置要求定	55	260	360	240	360	600	100	20	50	40	50	160	70	55	80	80
QHLY-2 × 125	910+S	795+S		62	260	360	270	380	650	100	20	60	45	60	178	78	65	90	90
QHLY-2 × 160	960+S	830+S		75	280	380	300	400	700	100	20	70	50	70	196	86	75	100	100
QHLY-2 × 200	1025+S	880+S		85	280	380	330	450	750	100	20	80	55	80	215	92	85	110	110
QHLY-2 × 250	1105+S	945+S		95	300	400	360	500	800	150	25	90	60	90	235	102	95	120	120
QHLY-2 × 320	1200+S	1020+S		105	300	400	400	550	850	150	25	100	65	100	258	110	105	133	130
QHLY-2 × 400	1310+S	1110+S		115	350	450	450	600	900	150	25	110	70	110	282	120	115	148	140
QHLY-2 × 500	1425+S	1205+S		125	350	450	500	650	950	150	25	120	80	110	304	135	125	164	150
QHLY-2 × 630	1555+S	1315+S		140	400	500	560	720	1000	200	30	140	90	120	332	150	125	178	165
QHLY-2 × 800	1700+S	1440+S		155	400	500	620	800	1100	200	30	160	105	140	364	165	140	194	180
QHLY-2 × 1000	1860+S	1575+S		170	450	550	700	900	1200	200	30	180	120	160	395	185	155	215	200

QHSY弧门启闭机设计选用技术参数及安装外形尺寸（单位：mm）

型号	启门力 KN	闭门力 KN	活塞杆位移速度 m/min	工程行程 m	油缸内径 mm	活塞杆内径 mm	计算压力 Mpa
QHSY-200/40	200	40	0.5-1.2	3.5	160	95	15.5
QHSY-250/50	250	50	0.5-1.2	4	180	110	15.5
QHSY-320/60	320	60	0.5-1.2	4.5	200	125	16.5
QHSY-400/80	400	80	0.5-1.2	5	220	140	17.5
QHSY-500/120	500	100	0.5-1.2	5.5	250	160	17.0
QHSY-630/120	630	120	0.5-1.2	6	275	170	17.0
QHSY-800/160	800	160	0.5-1.2	6.5	300	180	17.5
QHSY-1000/2000	1000	200	0.5-1.5	7	330	190	17.5

启闭机型号	A	B	a	b	c	Φ d	e	R	地脚螺栓 GB/T799-1998
QHSY-200/40	744+S	根据水工布置要求定	215	93	85	80	110	110	6-M20 × 300
QHSY-250/50	798+S		235	102	95	90	120	120	6-M24 × 300
QHSY-320/60	860+S		258	110	105	100	133	130	6-M24 × 300
QHSY-400/80	926+S		282	120	115	133	148	140	8-M24 × 300
QHSY-500/120	1000+S		304	135	125	148	164	150	8-M24 × 300
QHSY-630/120	1078+S		332	150	125	164	178	165	8-M24 × 400
QHSY-800/160	1144+S		364	165	140	178	194	180	8-M24 × 400
QHSY-1000/2000	1212+S		395	185	155	194	215	200	8-M36 × 400

QB系列启闭机

Series cheadstock gears

用途

Application

QB型启闭机采用螺旋丝杆传动，可控制被启闭件的上下运动（闸门、堰门、闸阀等）或旋转运动（蝶阀、旋转堰门等），从而实现阀门或闸门的开启和关闭，其结构紧凑合理，启闭力大、系列全，广泛用于自来水厂、污水处理厂、各类给排水工程，水利水电工程中闸门、堰门、排泥阀等设备的升降和调节。可分为手动（手盘、手摇）和电动（手电两用）两类控制形式。

QBP型手盘式启闭机，结构简单，使用维护方便，常用于小吨位的启闭。

QBY型手摇式启闭机，性能可靠，为中小吨位闸门理想之启闭设备。

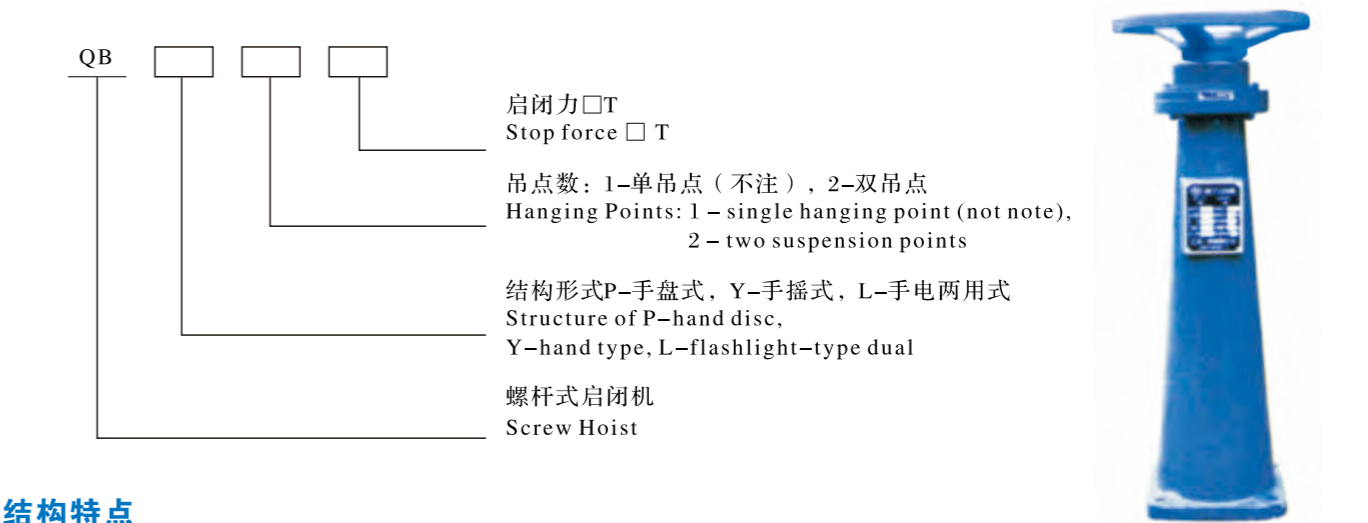
QB-type hoist spiral screw drive, can control the opening and closing parts of the upper and lower movement (gate, weir gate, gate, etc.) or rotation (butterfly, rotating weir gate, etc.) in order to achieve a valve or gate opened and closed, its compact structure, opening and closing force, the whole series, widely used in water plants, sewage treatment plants, various types of water supply and drainage, water power project gate, weir gates, mud valves and other equipment, lift and regulation. Can be divided into manual (hand set, hand) and electric (dual-use flashlight) two forms of control.

QBP-type disc hoist hand, simple structure, easy maintenance, commonly used in small-tonnage open and close.

QBY type hand hoist, reliable performance, ideal for small and medium tonnage of gate hoist equipment.

型号表示方法

Type and its indication



结构特点

Structural characteristics

- 手电两用启闭机采用螺杆螺旋付传动实现对闸门、堰门的启闭。传动螺杆均采用梯形螺纹并设有平面轴承，具有安装维护简单，操作轻巧灵活等特点。
- 开度指示采用齿轮传动，精确可靠，并具有开闭信号灯光指示。

3. 电动启闭机采用正齿轮-蜗杆-蜗轮二级减速, 满足转速慢, 转矩大的工作状态。

4.行程控制机构采用十进位计数器原理,控制行程的误差0.5%。转矩保护控制是通过蜗杆产生轴向位移,来达到保护电器的原理。

5. 根据环境的要求可分为普通型、户外型、防爆型以满足不同的要求。

1. Flashlight dual hoist pay with screw screw drive to control the gates, weir gates open and close. Trapezoidal thread screw drive and are used with plane bearings, with installation and maintenance simple, lightweight and flexible operating characteristics.

2. Opening direction by gear drive, accurate and reliable, and signal lights with opening and closing instructions.

3. Electric hoist with gears – worm – worm 2 slow, slow to meet the speed, torque and work status.

4. Travel control organizations to adopt a decimal counter principle, control error of 0.5% stroke. Protection of control torque generated by worm axial displacement, to achieve the protection of electrical principles.

5. According to the requirements of the environment can be divided into common type, outdoor type, explosion proof to meet different requirements.

Electrical control

1. 操作简便、可实现现场和远程操作, 单台控制和集中控制等多种控制方式。

2. 安全性能高，具有扭矩保护和行程限位双重防护措施。

1. Easy to operate, can be realized on-site and remote operation, a single control and centralized control and other control methods.

2. Security is high torque and travel limit protection of the double protective measures.

启闭力的简易计算

Simple calculation of hoisting force

1. 启门力 $F_{\text{启}}=n(F+W_1+W_2)$ 2. 闭门力 $F_{\text{闭}}=n(F-W_1-W_2)$

W_1 —闸板自重 (T) W_2 —丝杆自重 (T)

n—系数1.1~1.3闸门经常操作取大值，反之取小值

F—由于水压产生的闸板与门框之间的静摩擦力 (T)

$$F = \mu P S \sin x$$

μ — 闸板与门框之间摩擦系数 $\mu=0.3$

S—闸板面积 m^2 方闸门 $S=ab$ (a、b为进水口宽度)

圆闸门 $S=\pi D^2/4$ (D为闸门通径)

P —作用于闸板上水压 T/m^2 $P=h \gamma$

H—闸孔中心至最高水位高度 m

 γ — 水质比重 T/m^3

1. Kai Mun Kai force $F = n (F + W_1 + W_2)$ 2. Behind closed doors closing force $F = n (F - W_1 - W_2)$

W₁-gate weight (T) W₂-screw weight (T)

n-coefficient of 1.1 ~ 1.3 gate often operate large-value, otherwise take a small value

F-As the water pressure generated between the gate and door frames of static friction (T)

$$F = \mu PS \sin x$$

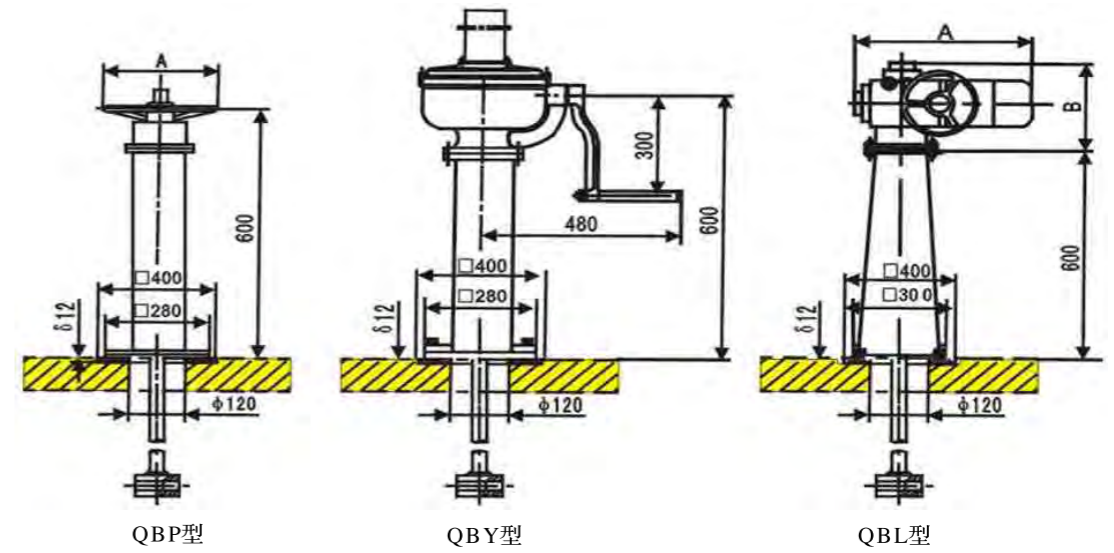
μ – friction coefficient between the gate and the door frame $\mu = 0.3$

S-gate to gate area m^2 $S = ab$ (a, b for the inlet width)

Round gate $S = \pi D^2 / 4$ (D path for the gate)

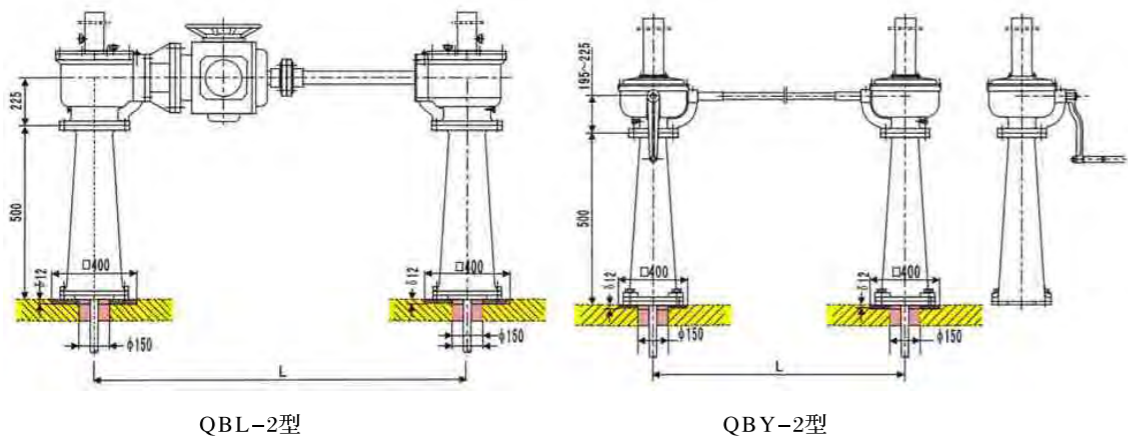
P-effect on the gate on the pressure T/m^2 $P = h \gamma$

H-gate hole center to the highest level of the m

 γ -water ratio T/m³

参数 Parameter 型号 Model	启闭力(T) Stop force (T)	A	丝杠直径 (mm) Screw diameter (mm)
QBP-1	1	320	Φ32
QBP-1.5	1.5	400	Φ40
QBP-3	3	600	Φ44
QBY-2	2		Φ44
QBY-4	4		Φ44
QBY-8	8		Φ44

参数 型号 Model	启闭力(T) Stop force (T)	工作转矩 (kgf/m) Working torque (kgf / m)	电机功率 (kW) Motor Power (kW)	A	B	丝杠直径 (mm) Screw diameter (mm)
QBL-2	2	20	0.37	478~513	346	Φ32
QBL-4	4	45	0.75	882~895	293	Φ44
QBL-6	6	60	1.1	882~895	293	Φ44
QBL-8	8	90	1.5	882~960	323	Φ55
QBL-10	10	120	2.2	882~960	323	Φ55
QBL-14	14	180	3	946~1011	371	Φ60
QBL-25	18/25	250	4	946~1011	371	Φ60/80



型号 Model	参数 Parameter	启闭力(T) Stop force (T)	丝杠直径 (mm) Screw diameter (mm)	电机功率 (kW) Motor Power (kW)	起吊间距L (mm) Lifting distance L (mm)
QBL-2-2、4、8		2、4、8	Φ44		750~3500
QBL-2-5		5	Φ44	0.75	1200~3000
QBL-2-10		10	Φ55	1.5	
QBL-2-18		18	Φ80	3	1550~3500
QBL-2-25		25	Φ80	4	

订货须知
Order Information

1. 订货时须详细注明型号、规格及数量。
2. 订购QBL型手电两用启闭机时需注明环境要求（室内、室外、防爆等）。
3. QBL型启闭机配用电动装置为常规产品，我公司也可按用户需要配用其他电动装置或进口设备，电机功率按电动装置配套。
4. 启闭机一般与本公司闸门配套订购，若单独订购启闭机，请注明提升高度、吊点至启闭机底部距离、丝杆端部连接形式及尺寸。
 1. Order to be more specified models, specifications and quantity.
 2. Order QBL dual hoist type flashlight when the need to specify environmental requirements (indoor, outdoor, explosion, etc.).
 3. QBL type hoist is equipped with electric devices for the conventional product, the company in accordance with user needs with use of other electrical devices or imported equipment, the electrical power by electrical equipment and supporting facilities.
 4. Headstock machines generally supporting the company's gate order, if ordered separately hoist, please indicate the lifting height, lifting point to hoist the bottom of the range, screw end connection form and dimensions.



集成式(电液一体)启闭机
Integrated (electro-hydraulic integrated) hoist

概述
Summary

集成式液压启闭机是一种集机、电、液一体的新型闸门启闭装置，它由油缸、油泵、电机、储油箱，滤油器、集成阀组等组成，使用时只需接通控制电源，就可使活塞杆往复运动，从而实现闸门的启闭。

启闭机分为单吊点和双吊点，其启闭速度可以根据具体工况进行调整。对于你你倾倒式闸门，闭门时阀组会自动产生背压，有效保证了闭门过程中平稳。

Integrated hydraulic headstock gear is a new type of gate opening and closing device which integrates machine, electricity and liquid. It is composed of oil cylinder, oil pump, motor, oil storage tank, oil filter, integrated valve group, etc. when it is used, it only needs to connect the control power supply to make the piston rod move back and forth, so as to realize the opening and closing of the gate.

The hoist is divided into single lifting point and double lifting point, and its opening and closing speed can be adjusted according to specific working conditions. For your dump gate, when the gate is closed, the valve group will automatically generate back pressure, effectively ensuring the stability of the process of closing the gate.

特点
Characteristic

集成式液压启闭机采用的是集成阀组，只需电机正反转，就能实现各类闸门平稳启闭。

根据工程需要，启闭设备可实现远程自动化控制。当遇到停电或启闭机控制系统有故障时，可配各应急手动装置进行闸门启闭。

该型式的液压启闭设备用于单孔或双孔布置时，与常规液压启闭设备材料相比性能价格比更高；该启闭设备非常适用于景观要求较高的场合；对于新建闸、桥一体布置其特色更明显。

双吊点启闭机采用独特的电机变频调速方式，同步效果好，性能稳定。

具有自动过载保护功能，不会损坏自身及其它设备，同时使用寿命长。

The integrated hydraulic hoist adopts the integrated valve group, which can realize the stable opening and closing of all kinds of gates only by the forward and reverse rotation of the motor.

According to the needs of the project, the opening and closing equipment can realize remote automatic control. In case of power failure or hoist control system failure, each emergency manual device can be equipped for gate opening and closing.

When this type of hydraulic hoisting equipment is used for single hole or double hole layout, its performance price ratio is higher than that of conventional hydraulic hoisting equipment materials; this hoisting equipment is very suitable for occasions with higher landscape requirements; its characteristics are more obvious for the integrated layout of new gates and bridges.

The double lifting point hoist adopts a unique motor frequency control mode, with good synchronous effect and stable performance.

It has automatic overload protection function, will not damage itself and other equipment, and has long service life.

LSYQ-D平面直升门选用液压启闭机

LSYQ-D plane vertical door adopts hydraulic hoist

该启闭机用于中小型水利、市丐帮河道污水治理工程，它具有结构紧凑、使用方便、安装快捷的特点。平机直升门可单、双向止水；也可动水启闭。

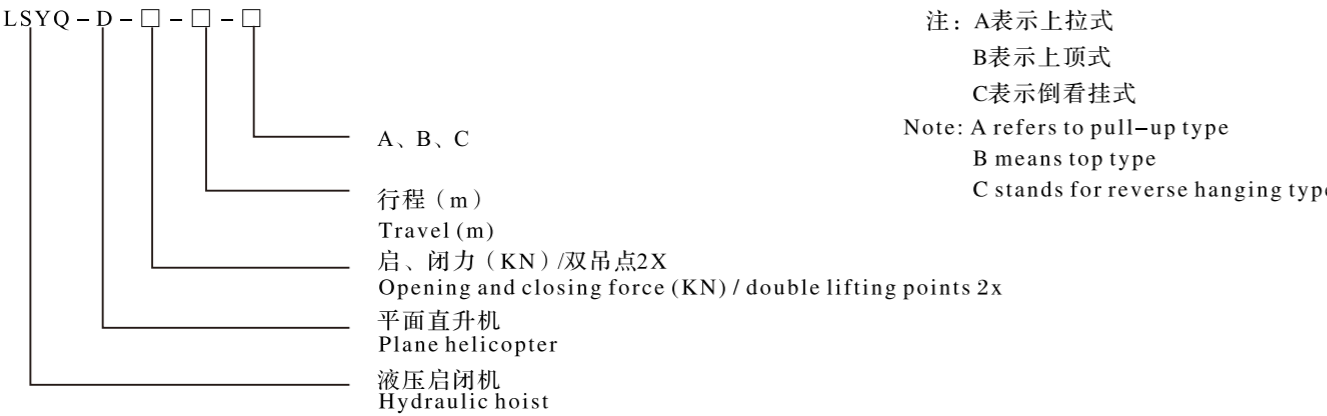
该启闭机可用于工作闸门、检修闸门或事故闸门（闸门材质可以是钢或铸铁）；可以用单吊点、双吊点（闸门宽度大于3m）；闸室高度不够时采用倒挂式布置。

The hoist is used in small and medium-sized water conservancy and urban beggars' sect river sewage treatment project. It has the characteristics of compact structure, convenient use and quick installation. The vertical lift door of the flat crane can seal water in one or two ways, and can also be opened or closed by water.

The hoist can be used for working gate, maintenance gate or emergency gate (the gate material can be steel or cast iron); single lifting point and double lifting point can be used (the gate width is more than 3m); when the gate chamber height is not enough, the inverted hanging arrangement can be used.

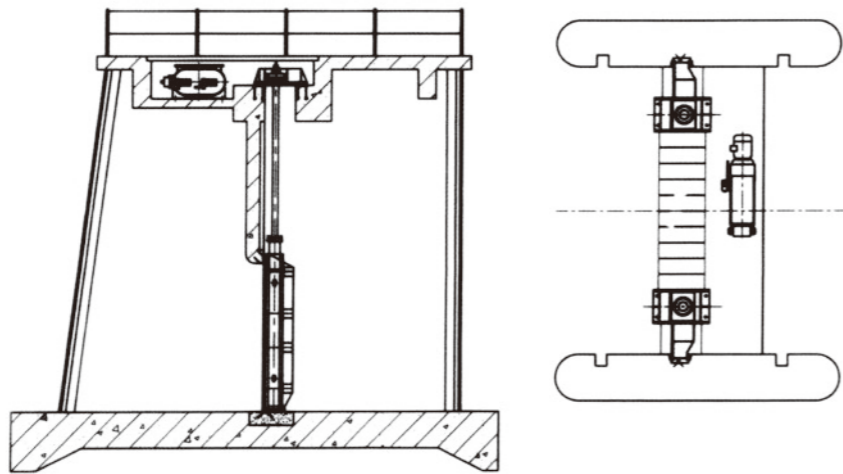
LSYQ-D启闭机型号表示方法

LSYQ-D Type and its indication

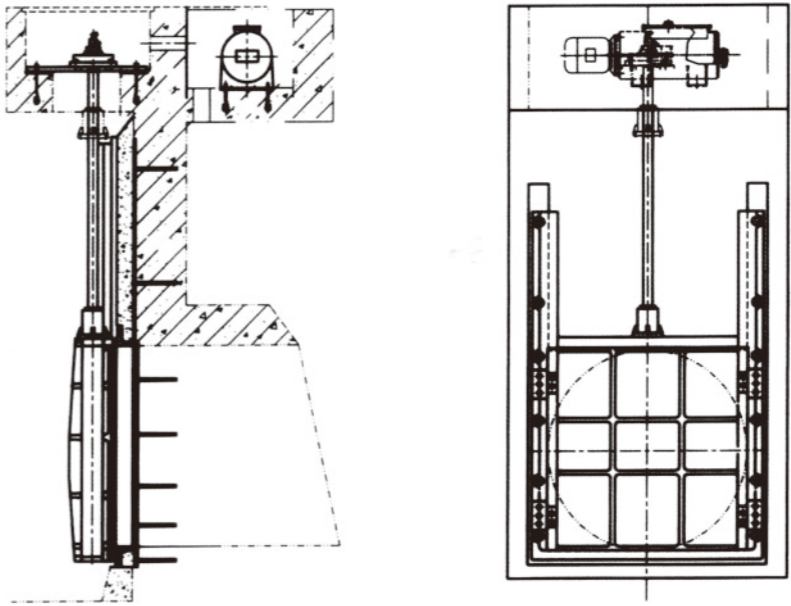


LSYQ-D平面直升门启闭机设计选用技术参数及安装外形尺寸

LSYQ-D Technical parameters and installation dimensions for design and selection of plane vertical door hoist



直升倒挂式双吊点钢闸门启闭机布置
Arrangement of the hoist for the steel gate with double lifting points



直升倒挂式单吊点铸铁门启闭机布置
Arrangement of the hoist for the cast iron gate with single lifting point

LSYQ-G弧形门选用液压启闭机

LSYQ-G arc gate adopts hydraulic hoist

该启闭机用于水利、水库、小型水电站的表（潜）孔弧形闸门，它具有结构紧凑、传动效率高、压力损失小、运行平稳的优点。

弧门可动水启闭；深孔弧门用单吊点，启闭机需设下压力；表孔弧门用吊点，可自重闭门。

启闭机布置可采用上端耳轴、中间耳轴或下端耳轴摆动的结构型式。

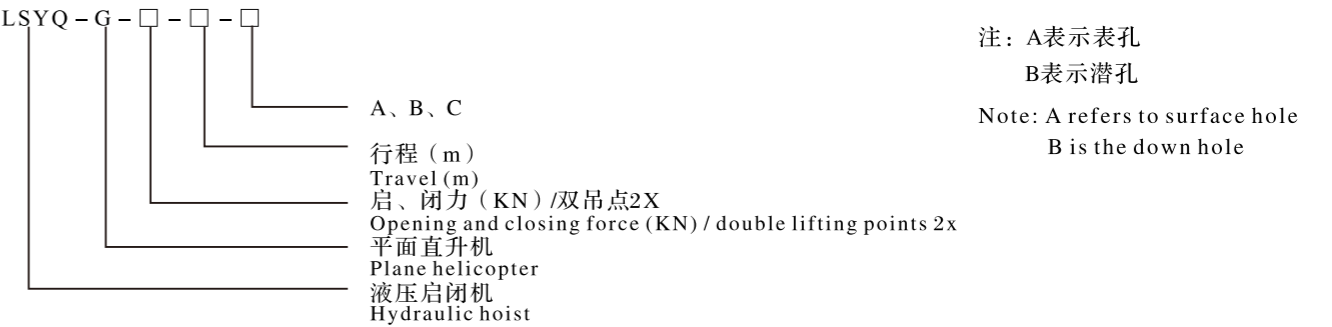
The hoist is used for the surface (down flow) radial gate of water conservancy, reservoir and small hydropower station. It has the advantages of compact structure, high transmission efficiency, small pressure loss and stable operation.

The arc gate can be opened and closed with movable water; the deep hole arc gate uses a single lifting point, and the hoist needs to be set with lower pressure; the surface hole arc gate uses a lifting point, which can be closed by self weight.

The hoist can be arranged with the structure of upper trunnion, middle trunnion or lower trunnion swinging.

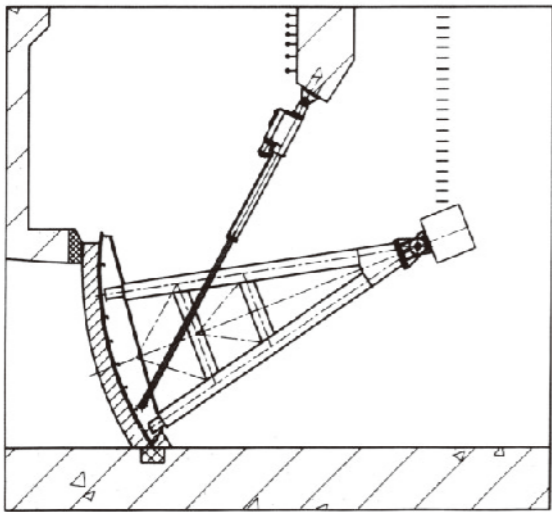
LSYQ-G启闭机型号表示方法

LSYQ-G Type and its indication

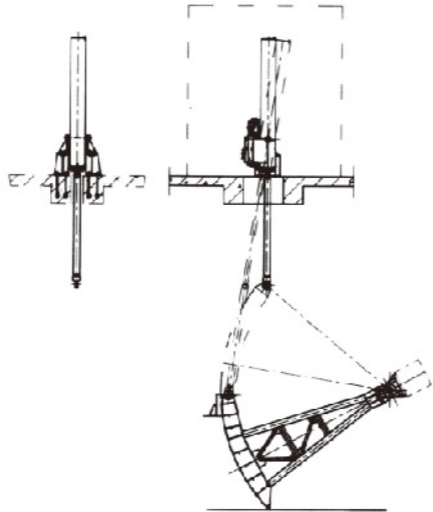


LSYQ-G弧形门液压启闭机设计选用技术参数及安装外形尺寸

LSYQ-G Technical parameters and installation dimensions for design and selection of G radial gate hydraulic hoist



露顶式弧门启闭机布置
Arrangement of open top radial gate hoist



深孔弧门启闭机布置
Layout of deep hole radial gate hoist

LSYQ-G系列深孔弧门液压启闭机安装尺寸

LSYQ-G Installation dimension of series deep hole radial gate hydraulic headstock gear

启闭机型号	L	L1、L2	B	H	H1	R	Φ	Φ1
LSYQ-G-100-S	300	根据具体水 工布置及闸 门高度确定	90	350	60	70	325	60
LSYQ-G-150-S	350		100	380	70	80	351	80
LSYQ-G-250-S	400		115	400	85	95	377	90
LSYQ-G-320-S	450		125	435	100	105	402	100
LSYQ-G-400-S	500		135	450	110	125	426	110
LSYQ-G-500-S	550		150	475	120	140	450	120
LSYQ-G-630-S	600		175	530	130	150	500	140
LSYQ-G-800-S	650		200	580	140	160	560	160

SBZ型 铸铁镶铜速闭闸门

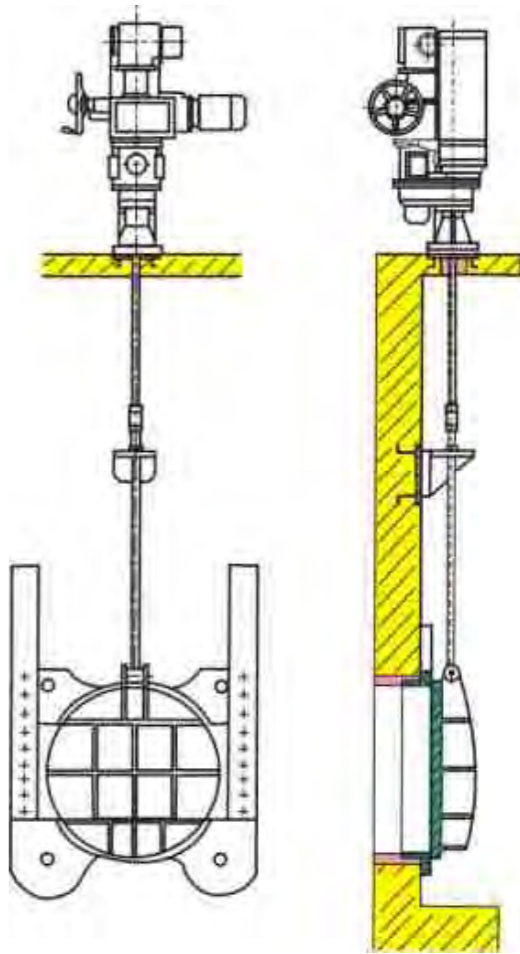
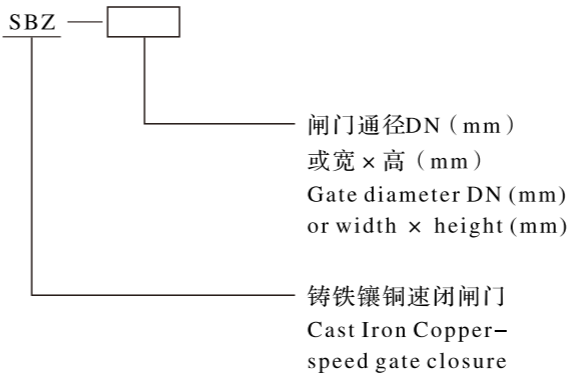
Type-SBZ Cast-iron copper-inlaid guard valve

用途
Application

我公司是环保设备的专业厂家，近年来在参考了国外同类厂家先进技术的基础上，根据国内现状对原闸门作了多次改进的基础上开发研制了速闭闸门，速闭闸门可在给排水工程污水处理、水利工程中作为紧急检修闸门用。

Our company is a professional manufacturer of environmental protection equipment, in recent years in reference to similar foreign manufacturers on the basis of advanced technology, according to the domestic situation made many improvements to the original gate was developed, based on the closed gate speed, fast close the gate to the drainage works in sewage treatment, Water gate used as an emergency repair.

型号表示方法
Type and its indication



结构特点和工作原理
Structural characteristics and working principle

速闭闸门由闸板、门框、滚珠丝杆、启闭装置构成，在正常状态下与普通闸门相同，可手—电动操作开关闸门，又可依靠闸门系统自垂作用快速关闭闸门，速闭完成后立即恢复到手—电操作状态，速闭未完成（门板卡在某一中间位置）时，经过一段时间（60s）后能自动恢复到手—电操作状态。

速闭闸除具有普通铸铁闸门的功能和优点外，在非正常情况下（如停电等），能在15s或更短的时间内将闸门关闭，最大限度地避免经济损失和人员伤亡。

MZF、MZY型 铸铁镶铜闸门

TYPE-MZF、MZY CAST-IRON COPPER-INLAID GATE

启闭机由电动减速器和自重下降装置（速闭装置）组成，电动减速器类似普通闸启闭机，由齿轮副、蜗轮副、转矩控制机构、行程控制机构及开度控制机构组成，停电时依靠门板自重力作用自动下落关闭闸门，缓冲器是利用液压缓冲原理降低门板下落时的冲击力，阻尼器可用于调节门板系统下落的。

Speed closed gate by the gate, door, ball screw, lifting device structure, in the normal state and the common gate similar to hand – electric operation switch gates, gate systems can rely on role from the vertical closure of the gate fast, fast close to complete immediately after the restoration of hand – power operating state, speed is not close to complete (the door card in a middle position) when, after a period of time (60s) can automatically resume after the hand – electric operating state.

In addition to speed closed gate cast iron gate with the general features and benefits, as regards non–normal circumstances (such as power failure, etc.), in 15s or less, 将 closure of the gates as possible to avoid economic losses and casualties.

Hoist reducer and the weight down by the electric devices (speed closed device), is similar to ordinary electric gate head stock gear reducer, the gear pair, worm gear, torque control agencies, travel agencies and opening control control agencies, a failure to rely on the whereabouts of the door from automatically closing gates gravity, buffers reduce the use of hydraulic buffer theory of impact when the door drop, the damper door system can be used to adjust the whereabouts.

订货须知

Order Information

1. 订货时应注明启闭机底部平台至闸门中心高度。

2. 未注明本公司一概按单向闸门供货，如用户需要双向速闭闸门请特殊订货。

3. 如未注明将不配电控箱。如需特殊订货，要注明为PLC控制还是普通控制。

4. 安装型式及闸门预埋件布置图请参见本公司铸铁镶铜闸门产品样本。
1. Ordering please indicate the gate hoist the bottom of the platform to the center height.

2. Does not indicate the company assumes a one–way gate according to supply, such as two–way speed users need to special order, please close the gate.

3. If not specified will not power distribution control box. For special order, to indicate control or common control for the PLC.

4. Installation type and layout of embedded parts of gates, see Copper Company Cast Iron Gate product samples.



携手共进
共创辉煌
销售网络

